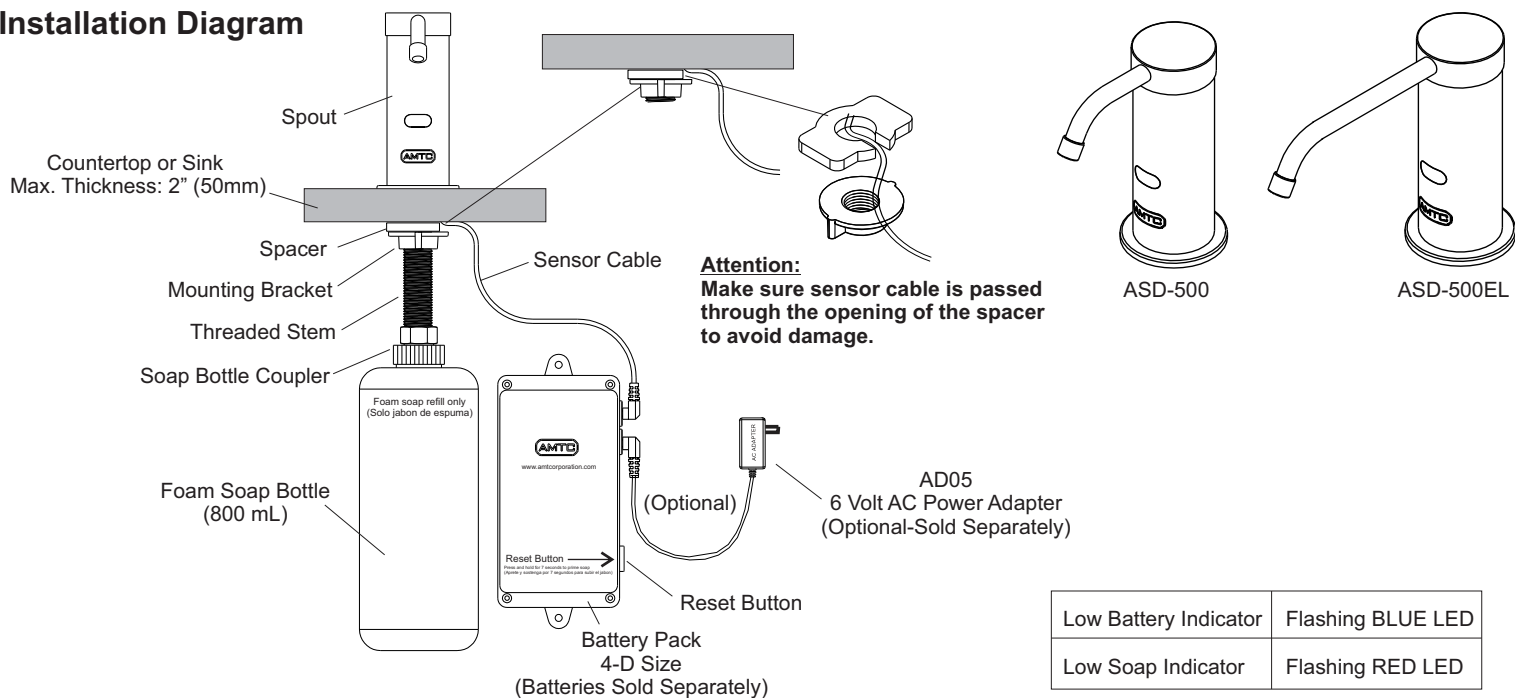




ASD-500 FOAMFLO[®] AUTOMATIC FOAM SOAP DISPENSER INSTALLATION & OPERATION MANUAL

Installation Diagram

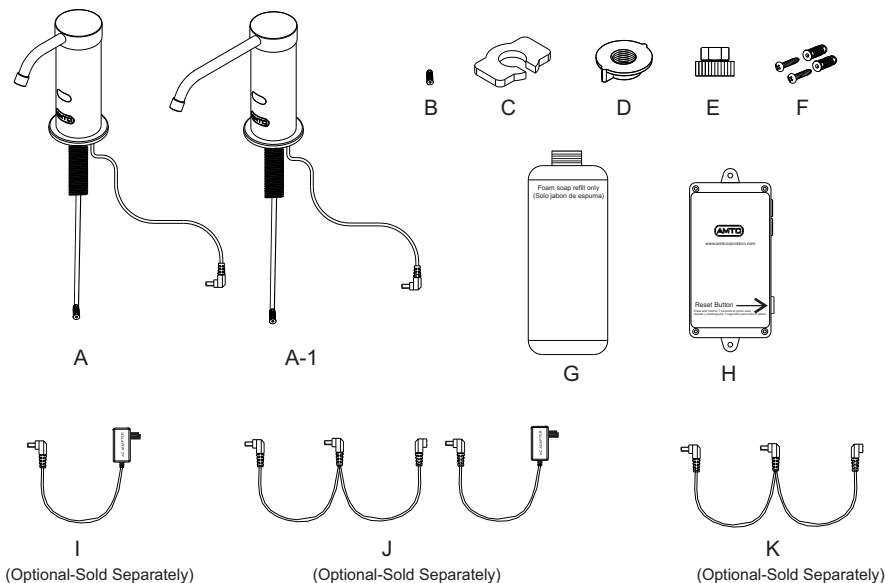


Installation Instructions (refer to installation diagram above)

1. If hole is not present drill a 1" (25.4mm) hole on countertop (refer to installation template on page 3).
2. Mount the spout onto the countertop or sink and hand tighten mounting bracket and spacer without damaging sensor cable.
3. Install batteries into battery pack and mount battery pack onto back wall using provided hardware (battery pack must be installed within 15" (380mm) of spout).
Note: An optional 6 Volt AC power adapter (Part# AD05) can be purchased separately if electrical power is required.
4. Screw soap bottle coupler onto threaded stem and hand tighten.
5. Fill up bottle with foam soap (**Important: Use low viscosity non-lotionized foaming soap with no abrasives.**)
***Viscosity Range: (mPa·s or Cp): 1-100 / pH Range: 5.5 - 8.5**
***Failure to use soap products within the required range of viscosity and pH may result in damage to product and void warranty.**
6. Screw soap bottle onto soap bottle coupler and hand tighten.
7. Connect sensor cable onto battery pack (you will hear pumps and soap will purge for approximately 5 seconds).
8. Soap dispenser is now ready for use.

Parts List

Ref #	Part #	Description
A	ASD-5SPT	Spout
A-1	ASD-5SPTTEL	EL Spout (6" Long)
B	ASD-5FA	Spout Filter Assembly
C	ASD-5SPA	Spacer
D	ASD-5MB	Mounting Bracket
E	ASD-5SBC	Soap Bottle Coupler
F	ASD-5MSC	Mounting Screws
G	ASD-5SB	800ml Soap Bottle
H	ASD-5BP	Battery Pack
I	AD05	6-Volt AC Power Adapter (Optional)
J	AD05-2	6-Volt AC Power Adapter w/Extension for 2 Devices
K	AD05-2-EXT	Extension Only for AC Power Adapter

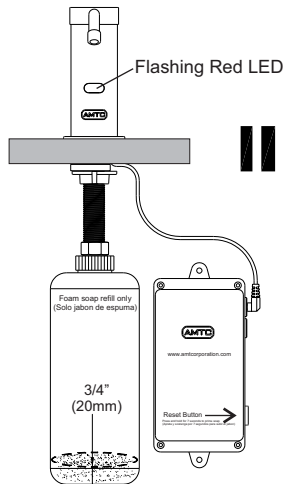




ASD-500 FOAMFLO[®] AUTOMATIC FOAM SOAP DISPENSER INSTALLATION & OPERATION MANUAL

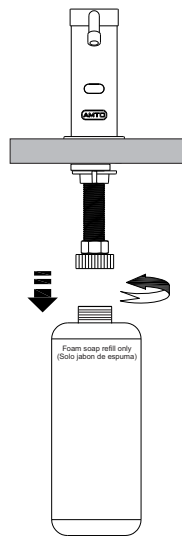
Soap Refill Instructions:

1. Flashing Red LED Indicates Low Soap



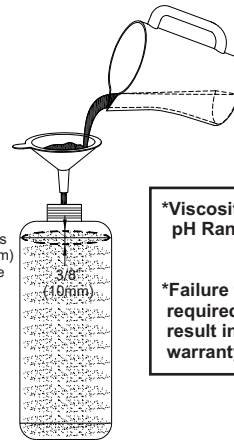
Refill Soap When Soap Level is Approx. 3/4" (20mm)

2. Unscrew Foam Soap Bottle



3. Refill Foam Soap Bottle

Important: Use low viscosity non-lotionized foaming soap with no abrasives.

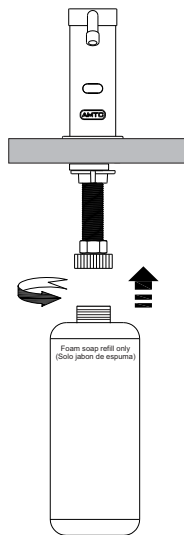


Max Filling Level is
Approx. 3/8" (10mm)
From Top of Bottle

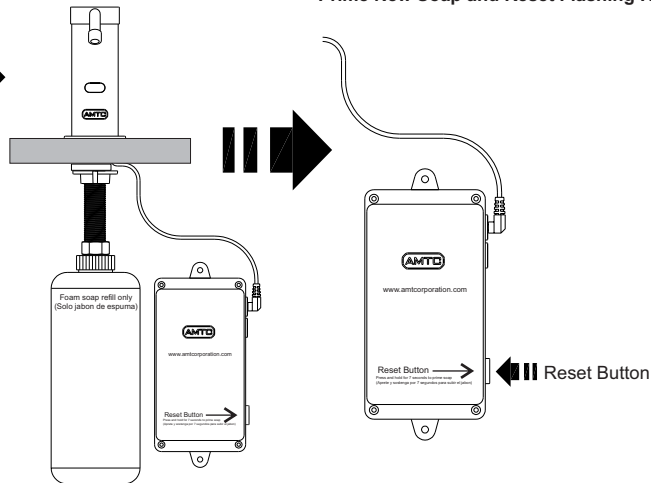
*Viscosity Range: (mPa·s or Cp): 1-100
pH Range: 5.5 - 8.5

*Failure to use soap products within the
required range of viscosity and pH may
result in damage to product and void
warranty.

4. Re-install Foam Soap Bottle



5. Press and Hold Reset Button for 7 Seconds to Prime New Soap and Reset Flashing Red LED.



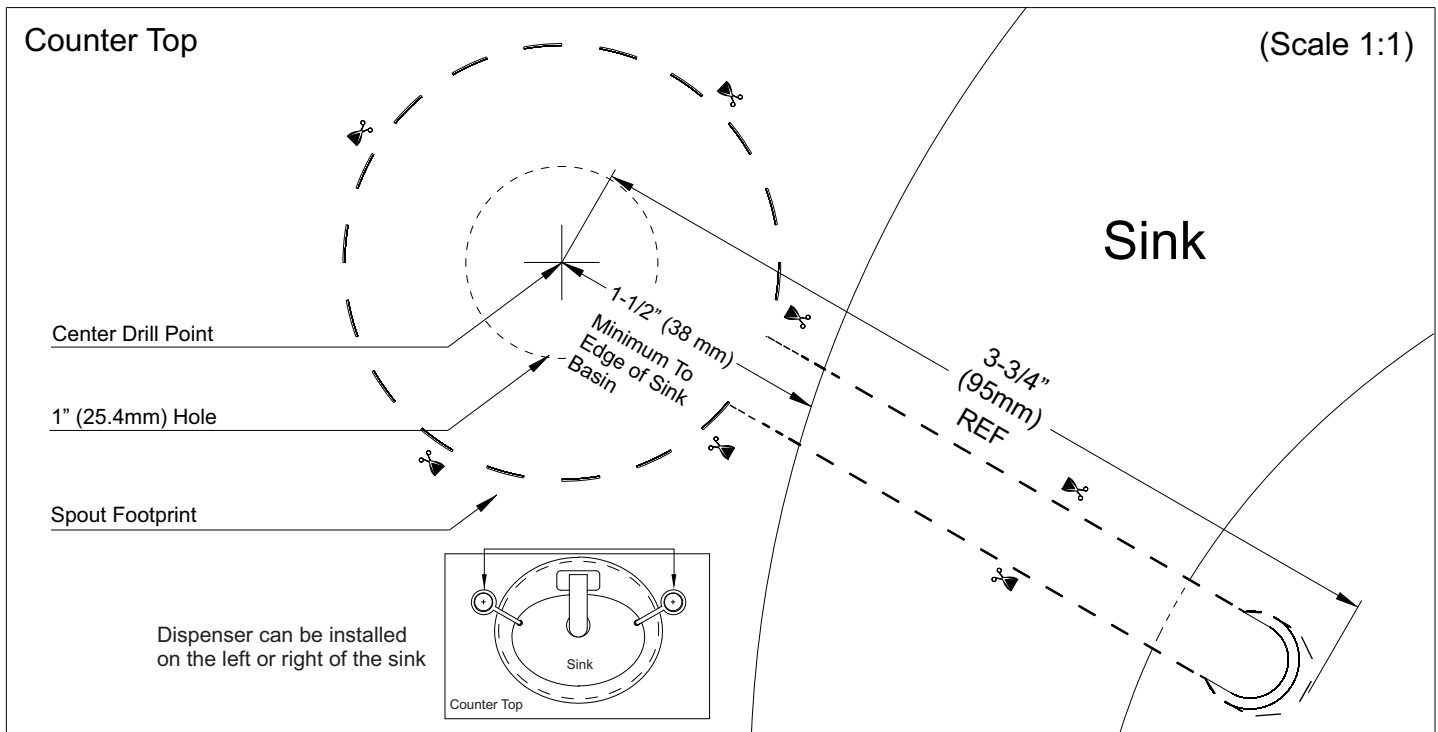
Troubleshooting:

Problem	Solution
Flashing BLUE LED	Batteries are low/drained. Replace all 4 batteries (D-size).
Flashing RED LED	Soap is low or empty. Refill soap bottle and press and hold reset button for 7 seconds to prime new soap and reset LED.
Soap does not come out of spout	Spout filter is dirty and won't pump soap through the spout. Clean or replace spout filter assembly.
Soap dispenses in liquid form and not foam	Wrong soap was used and pump is dirty. Refill soap bottle with water and press and hold reset button for 7 seconds to prime water through the unit. This should be repeated until only water dispenses and soap is completely flushed out. Once unit is flushed out, refill soap bottle with foaming soap. Prime unit again until soap comes out.



ASD-500 FOAMFLO[®] AUTOMATIC FOAM SOAP DISPENSER INSTALLATION & OPERATION MANUAL

Installation Template for Model ASD-500 Spout (Not used for Model ASD-500EL)



Warranty

AMTC WARRANTS THE ASD-500 SOAP DISPENSER TO BE FREE OF DEFECTS IN MATERIAL AND WORKMANSHIP FOR A PERIOD OF THREE (3) YEARS FROM DATE OF PURCHASE, WHEN PROPERLY INSTALLED AND UNDER NORMAL USE AND SERVICE. THESE PROVISIONS DO NOT INCLUDE THE BATTERIES SHIPPED WITH THE PRODUCT. A DEFECTIVE PRODUCT MAY BE RETURNED TO AMTC OR ITS AUTHORIZED REPRESENTATIVES WITHIN THREE (3) YEARS FROM DATE OF PURCHASE WITH THE PROPER INVOICE OF PURCHASE. AMTC, AT ITS DISCRETION, WILL REPLACE OR REPAIR DEFECTIVE PRODUCT AT NO CHARGE. CLAIMS FOR LABOR, TRANSPORTATION, AND ANY OTHER INCIDENTAL COSTS WILL NOT BE ALLOWED. AMTC WILL NOT BE RESPONSIBLE FOR ANY CONSIDERABLE DAMAGES OF ANY KIND WHATSOEVER.

FOR TECHNICAL SUPPORT PLEASE CALL TOLL FREE 1-800-874-7822 OR VISIT OUR WEBSITE AT WWW.AMTCORPORATION.COM.

MAKE SURE TO VISIT OUR WEBSITE PERIODICALLY FOR INFORMATION ON NEW PRODUCTS AND TO DOWNLOAD ANY IMPORTANT PRODUCT DOCUMENTS THAT YOU MAY NEED IN THE FUTURE.



4840 York Blvd | Los Angeles CA 90042 | www.CandLsupply.com
Toll Free: (800) 458-2377 | Fax: (323) 258-6523 | sales@CandLsupply.com



Advanced Modern Technologies Corporation

19800 Nordhoff Place, Chatsworth, CA 91311

Tel: (818) 883-2682 Toll Free: (800) 874-7822 Fax: (818) 883-2620

www.amtcorporation.com