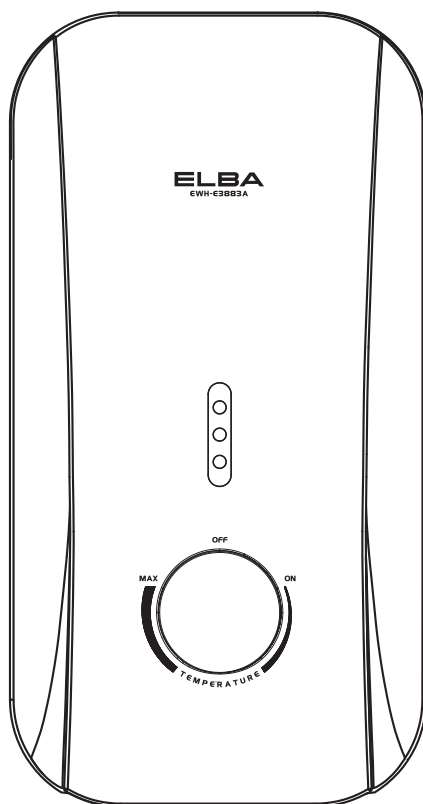


ELBA

Looks Good. Works Even Better.

FIOTTO Series



User Manual

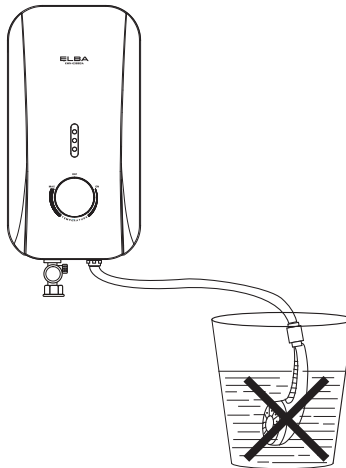
Thank you for purchasing **ELBA** Instant Water Heater.
Looks Good. Works Even Better.

Please read this manual thoroughly and understand the content before use.



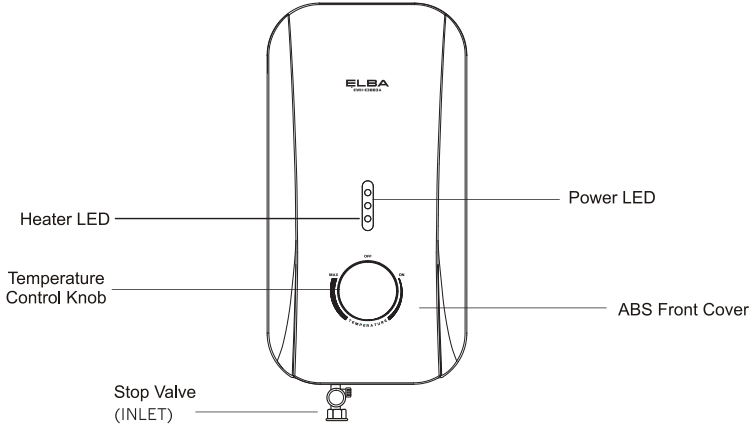
SAFETY PRECAUTION

1. Do not install reverse INLET & OUTLET of heater.
2. Do not install the heater where there is consistent spray directly over the unit.
3. Do not connect the OUTLET to any tap or fitting that is not recommended by the manufacturer.
4. Do not block the heater OUTLET in any way.
5. Do not attempt to repair the heater without qualified technician.
6. Do not leave children, elderly or disable person alone in shower.
7. Engage qualified electrician for installation.
8. Test water temperature with hand before using the shower.
9. Check the ELCB once a month (please refer to the Test Run of Heater) and consult professional for repair if there is any malfunction.
10. Metallic / chromed flexible hose and conductive control valve shall not be used.
11. Do not leave the hand shower idle in the pail.

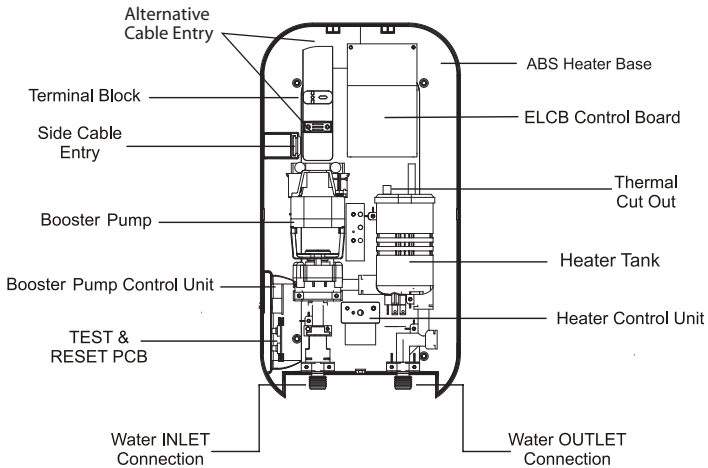


1. WATER HEATER PARTS IDENTIFICATION

EXTERNAL PARTS IDENTIFICATION

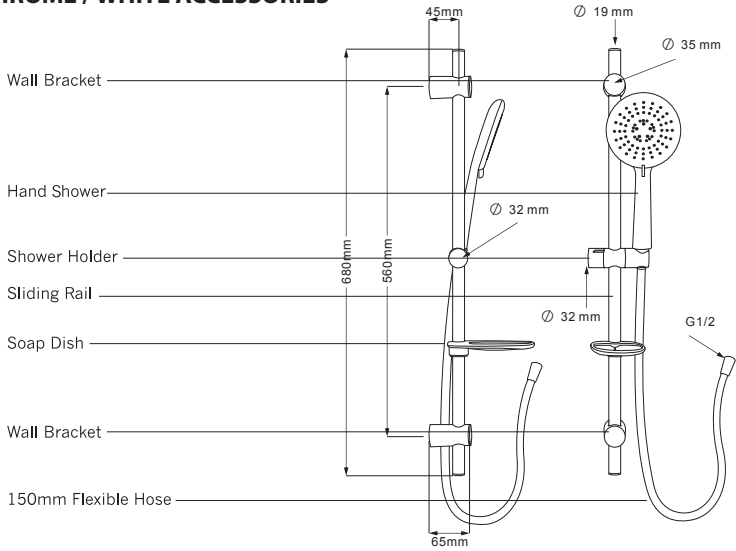


INTERNAL PARTS IDENTIFICATION



SHOWER SET ACCESSORIES IDENTIFICATION

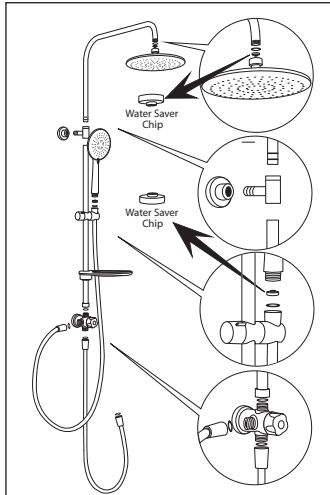
1. CHROME / WHITE ACCESSORIES



SHOWER SET ACCESSORIES IDENTIFICATION

2. RAIN SHOWER SET

(Optional Features)



STEP 1

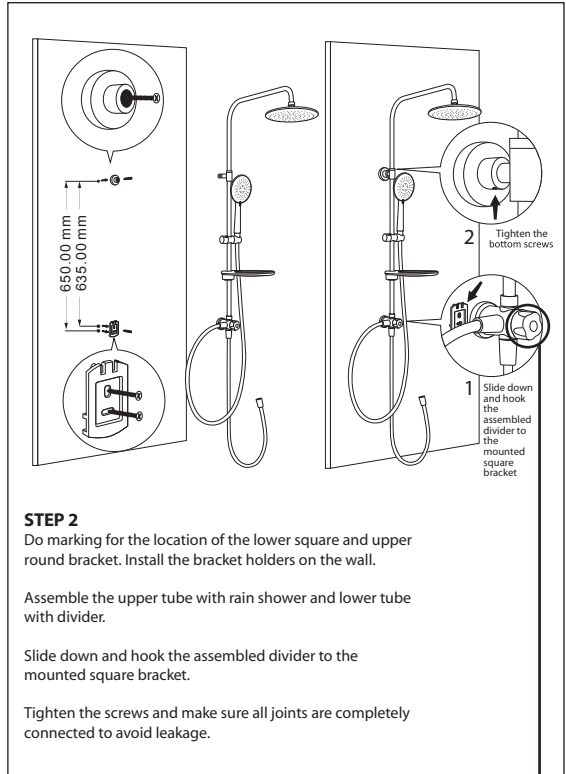
There is two Water Saver Chips located under the hand shower and on top of the rain shower head.

Water Saver Chip

A chip that helps you save water up to 50%!

ALERT

You may remove the two water saver chips if prefer stronger water pressure. Please be reminded that this is up to personal preference.



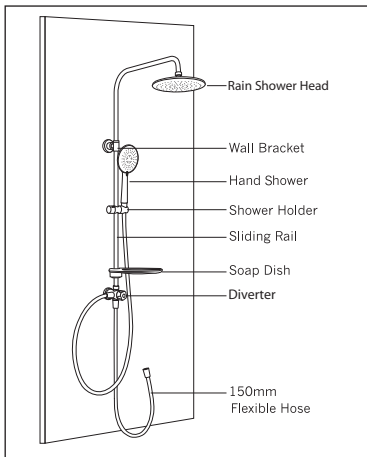
STEP 2

Do marking for the location of the lower square and upper round bracket. Install the bracket holders on the wall.

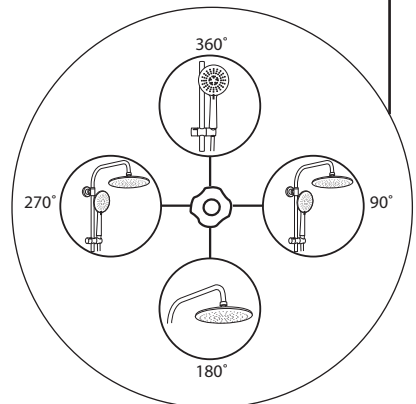
Assemble the upper tube with rain shower and lower tube with diverter.

Slide down and hook the assembled divider to the mounted square bracket.

Tighten the screws and make sure all joints are completely connected to avoid leakage.



360 Degrees 3-in -1 Rotation Diverter



2. GENERAL INFORMATION

INSTALLATION



CAUTION:
THIS APPLIANCE MUST BE EARTHED.

1. All the plumbing work should be completed before proceeding to electrical wiring connection. (Table 1)
2. Installation must be carried out by a qualified electrician with close reference to the operation manual and in compliance with the local regulations.
3. The unit works at minimum water flow rate of 2 litre/min, which then would trigger the built-in pump (only for pump model), boosting a stronger shower spray.
4. The built-in electronic Earth Leakage Circuit Breaker (ELCB) would cut-off the power supply to the heater in the event of current leakage of as low as 15mA. (Refer to AUTO INSPECT ALARM Indication - optional)
5. The Thermal Cut-Off would automatically shut off the power supply shall there is any abnormal rise of showering temperature.
6. The unit only operates when there is sufficient water flow to trigger the flow switch.
7. Electrical loading Table 1 :

Voltage (Vac)	Power (kW)	Amperes (A)	Recommended Conductor Size (csa)			MCB/ Fuse (A)	ON/OFF Switch (A)
			mm ²	Condukt Cable	Flexible Cable		
220 - 50/60Hz	3.5	16.0	2.5	7/0.67mm	50/0.25	20	20
	4.5	20.5	2.5	7/0.67mm	56/0.30	25	25
	5.5	25.0	4.0	7/0.85mm	56/0.30	32	32
	6.0	27.3	4.0	7/0.85mm	56/0.30	32	32
	6.5	29.6	4.0	7/0.85mm	84/0.30	32	32
	7.5	34.1	6.0	7/1.04mm	84/0.30	40	40
	8.0	36.4	6.0	7/1.04mm	84/0.30	40	40
230 - 50/60Hz	3.5	15.2	2.5	7/0.67mm	50/0.25	20	20
	5.5	24.0	4.0	7/0.85mm	56/0.30	32	32
	6.6	28.7	4.0	7/0.85mm	56/0.30	32	32
	8.8	28.3	6.0	7/1.04mm	84/0.30	40	40
240 - 50/60Hz	3.6	15.0	2.5	7/0.67mm	50/0.25	20	20
	4.2	17.5	2.5	7/0.67mm	50/0.25	20	20
	7.7	32.1	6.0	7/1.04mm	84/0.30	40	40
	9.0	37.5	6.0	7/1.04mm	84/0.30	40	40

3. INSTALLATION PROCEDURES

1. All the plumbing works should be completed before proceeding to electrical wiring connection.
2. INLET and OUTLET connection of the heater unit should not be reversed, with stop valve installed on INLET. (Diagram 1)
3. It is recommended that the unit should be mounted above 1.5m or 5-feet above the floor to bottom of the heater. (Diagram 1)

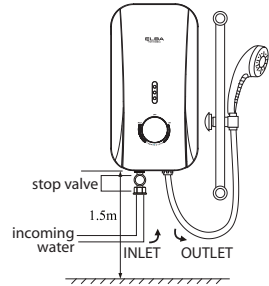


Diagram 1

4. Mark mounting position (Diagram 2)
 - Remove screw at the bottom of the heater
 - Lift the plastic cover upward
 - Mark mounting position on the wall
 - Drill the holes with 5.0mm diameter drill bit
 - Install the unit to the wall with plug

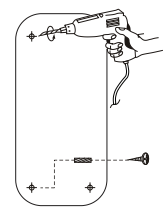
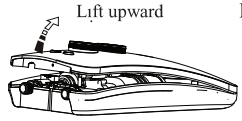


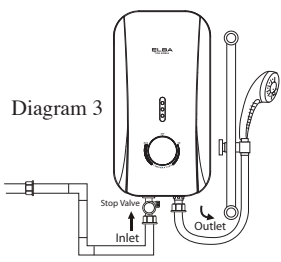
Diagram 2

5. Heater INLET and OUTLET Connection (Diagram 3)
 - a) **Connect the stop valve to INLET**, and be sure to put a gasket to prevent water leakage,
 - b) Connect the piping from the stop valve to incoming water supply. If necessary, make use of sealing tape for the connection to prevent water leakage.
 - c) Connect flexible hose to heater OUTLET. Turn on the water mains to drain out all the plumbing dirt and fill up the heater tank. Then, connect the flexible hose to the hand shower.

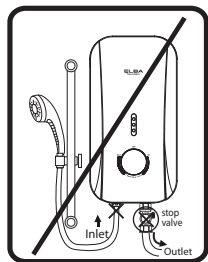
(Note: This step will prevent damage to the heating element).

SAFETY PRECAUTION

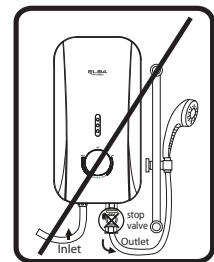
Do not install reverse INLET and OUTLET of heater



✓ correct installation



✗ inlet - outlet reverse (wrong installation)



✗ stop valve reverse (wrong installation)

6. Electrical Connection

IMPORTANT NOTE !

SWITCH OFF THE MAIN SUPPLY
BEFORE ELECTRICAL WORK

- a) Insert electrical cable through the rubber grommet as shown.
- b) Connect the cable to the terminal block and fully tighten them as the following:-
 - Red or Brown.....Live (L)
 - Black or Blue.....Neutral (N)
 - Green or Green/Yellow.....Earth (⊕)
- c) Restore the cover and secure screw at the bottom. (Diagram 4)
- d) Align the knob, from 'OFF' position to 'MAX' and return to 'OFF' mark as shown (Diagram 5)

Restore cover

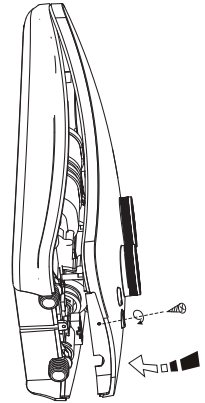


Diagram 4

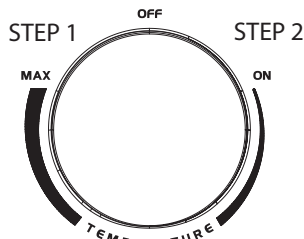


Diagram 5

Test Run Of Heater:

- a) Turn on the stop valve and water should spray out from the shower head.
- b) Switch on the main power supply ("POWER" LED would light up).
- c) Turn on the Temperature Control Knob and 'HEATER' LED would light up. The water should be warmed in a few seconds.
- d) Turn on the Pump Control Knob clockwise to accelerate water flow. (For Pump model only)
- e) Test the ELCB by pressing 'TEST' button. The unit should be tripped. 'POWER' and 'HEATER' LEDs would light off.
- f) Press 'RESET' button. The unit should resume to normal condition.
- g) The heater is now ready for use.

4. OPERATION PROCEDURE

- 1 Switch on the main power supply, the 'POWER' LED would light up.
- 2 Turn on the water supply at the stop valve.
- 3 Turn on the Temperature Control Knob. The 'HEATER' LED would light up and the water temperature will be increased accordingly as the knob being turned clockwise from 'ON' to 'MAX'.
- 4 For normal cold shower, just turn the Temperature Control Knob to 'OFF' position.
- 5 Switch off the power supply when not in use.

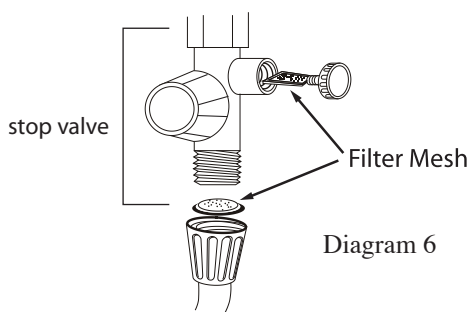
5. GENERAL MAINTENANCE

DO NOT USE THINNER, ALCOHOL OR PETROL

You may clean the heater with a damp cloth and mild detergent but do not use thinner, alcohol, petrol or any other organic solution.

CLEAN FILTER REGULARLY (Diagram 6)

- a) Remove the filter mesh at the stop valve (for filter type only) by turning the knob filter counter clockwise direction and pull out the knob (Diagram 6). Flush it with water to remove any trapped sediments. Install the knob filter back to its original position.

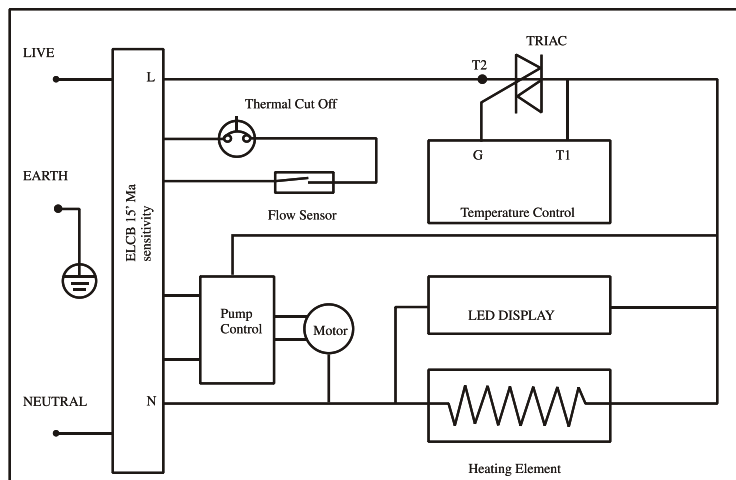


6. TECHNICAL SPECIFICATION

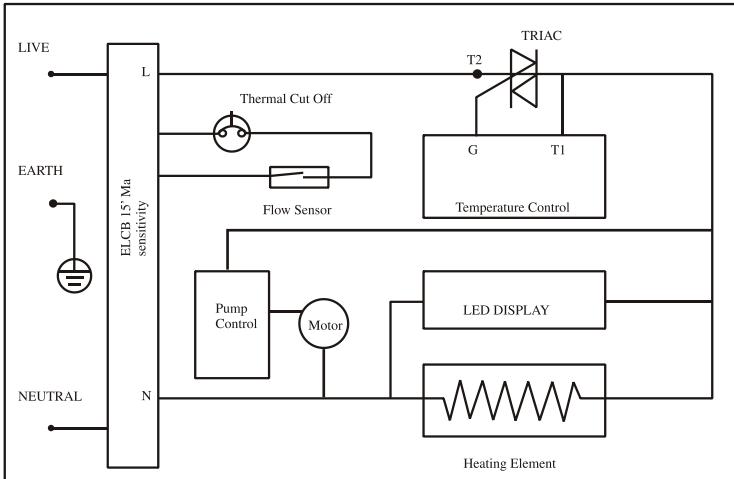
Electrical loading	3.6kW 240V 50Hz
Other Range	Please refer Electrical loading Table
ELCB sensitivity	15 mA
Operating Condition	Open System (Open Outlet)
Water Connection	Ø 15.0mm (1/2" BSP)
Degree of Protection	IP25
Minimum Water Flow Rate	2 litre/min
Minimum Water Pressure	0.2 bar (20kPa / 2.9psi)
Maximum Water Pressure	4 bar (0.4MPa / 58psi)
Heater Dimension (mm)	440(H) x 190(W) x 75(D)
Heater Nett Weight	Non pump 1.3kg Inverter Silent Pump 1.8kg AC Pump 2.0kg

7. SCHEMATIC WIRING DIAGRAM

INVERTER SILENT PUMP (EWHR-E3885DC)



AC PUMP (EWH-E3883AC)



NON -PUMP (EWH-E3881)

