

SAFETY DIRECTIONS

IMPORTANT SAFEGUARDS

When using an electrical appliance, basic precautions should always be followed, including the following:

READ ALL INSTRUCTIONS BEFORE USING THIS VACUUM CLEANER.

WARNING

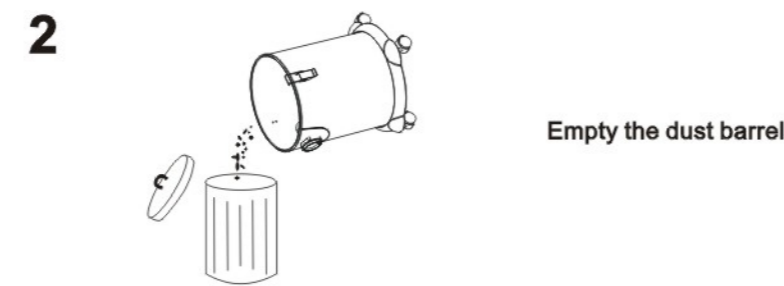
To reduce the risk of fire, electric shock, or injury:

- Do not use outdoors.
- Do not leave vacuum cleaner when plugged in. Turn off the switch and unplug the electrical cord when not in use and before servicing.
- Do not allow to be used as a toy. Close attention is necessary when used by or near children.
- Use only as described in this manual. Use only manufacturers' recommended attachments.
- Do not use with damaged cord or plug.
- Do not pull or carry by cord, use cord as a handle, close door on cord, or pull cord around sharp edges or corners. Do not run vacuum cleaner over cord. Keep cord away from heated surfaces.
- Do not use extension cords or outlets with inadequate current carrying capacity.
- Turn off all controls before unplugging.
- Do not unplug by pulling on cord. To unplug, grasp the plug, not the cord.
- Do not handle plug or vacuum cleaner with wet hands or operate without shoes.
- Do not put any object into openings. Do not use with any opening blocked; keep free of dust, lint, hair, and anything that may reduce airflow.
- This vacuum cleaner creates suction and contains a revolving brushroll. Keep hair, loose clothing, fingers, and all parts of body away from openings and moving parts.
- Do not pick up anything that is burning or smoking, such as cigarettes, matches, or hot ashes.
- Do not use without dust cup or filter in place.
- Use extra care when cleaning on stairs.
- Do not use to pick up flammable or combustible liquids such as gasoline, or use in areas where they may be present.
- Store your cleaner indoors in a cool, dry area.
- ENSURE you turn the unit off at the very minimum every 15 minutes (for 1 minute) to let the motor cool down – failure to do so may cause motor failure.
- DO NOT use this unit for more than 4 hours (including rest breaks) on any given day.

1

TO REPLACE DUST BAG

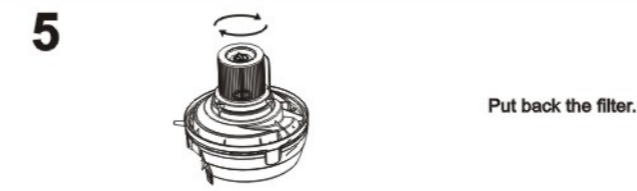
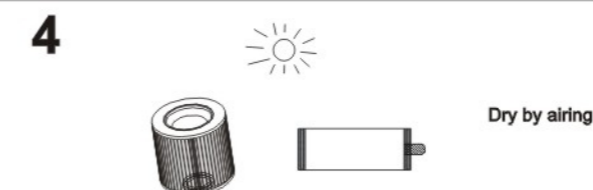
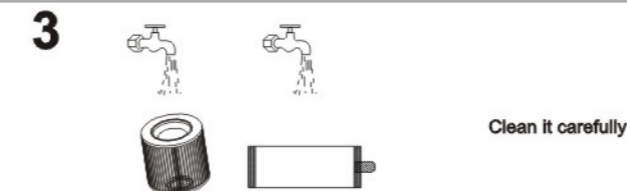
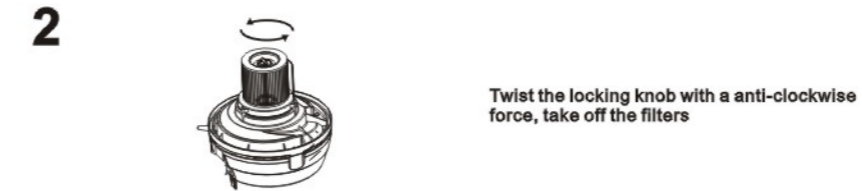
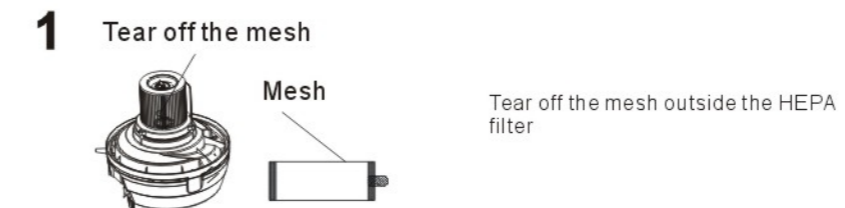
If the dust barrel is full, please empty it as soon as possible



6

MAINTENANCE

Warning: When the filters are obviously covered with dust or the suction decreases considerably, please clean it in time, for this can improve the working efficiency and extend the life time of the cleaner. Never use the machine without filters.



ELBA

INSTRUCTION MANUAL

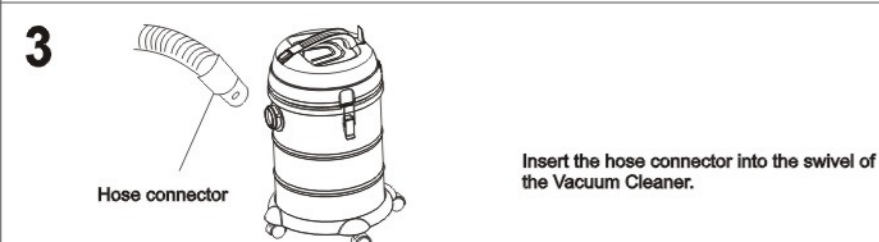
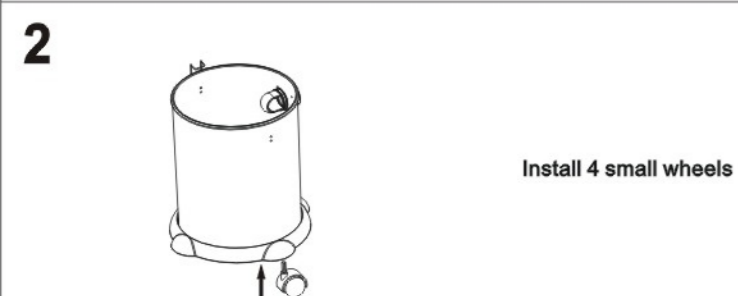
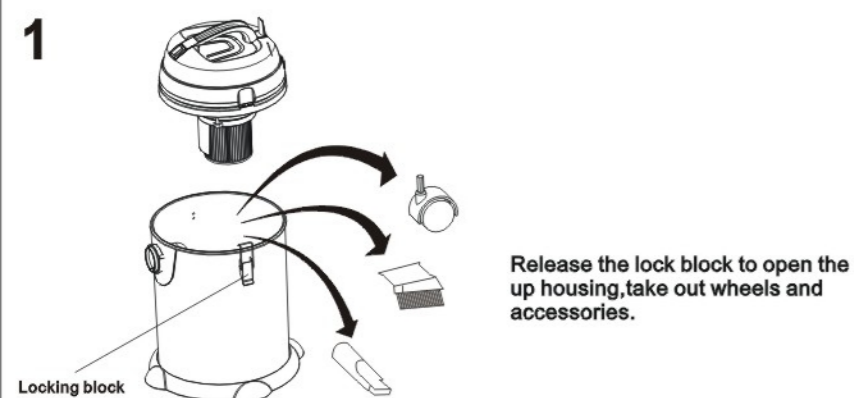
Wet&Dry Vacuum Cleaner

EV-6720



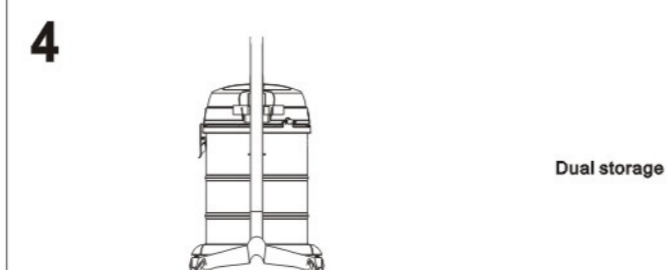
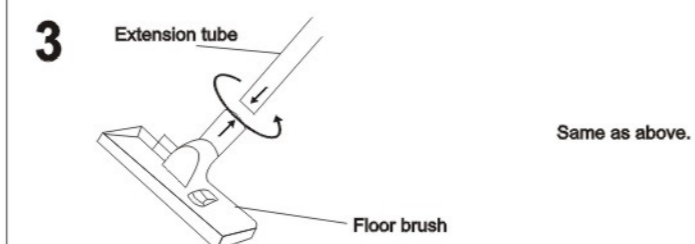
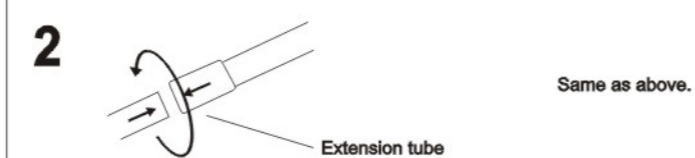
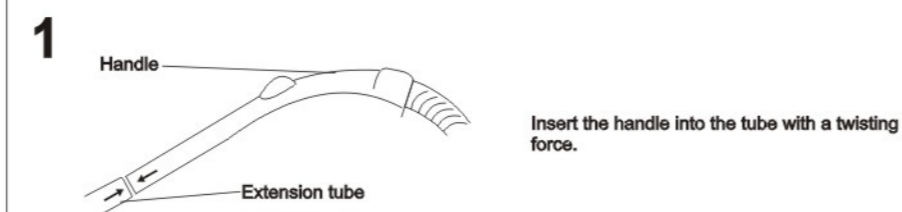
Please read the instruction manual carefully before operation and well Preserve it

OPERATION METHOD



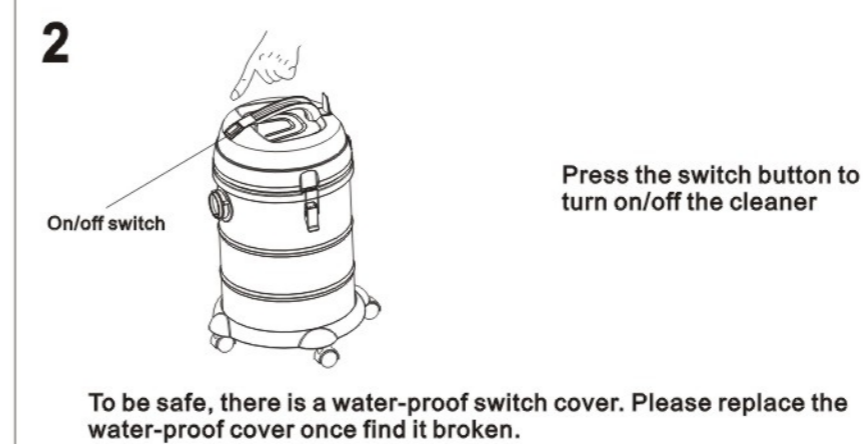
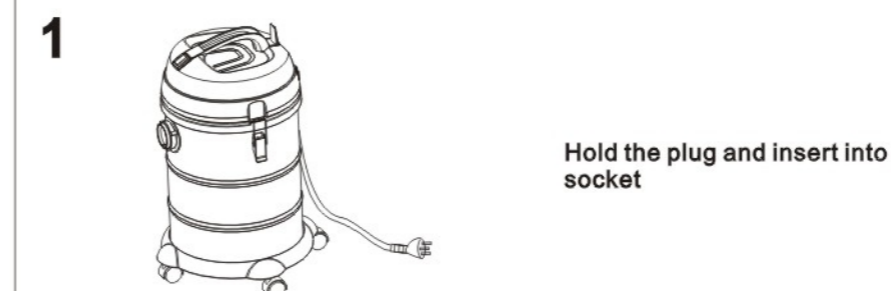
3

OPERATION METHOD



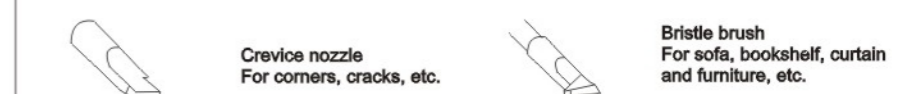
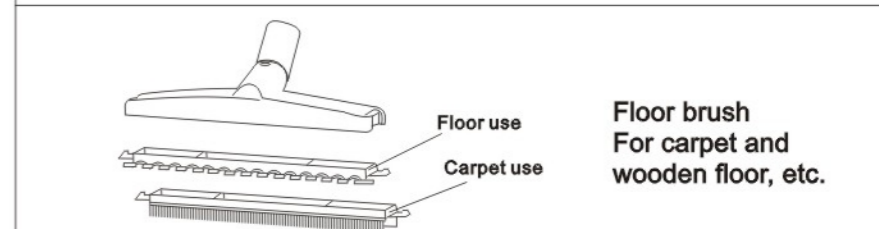
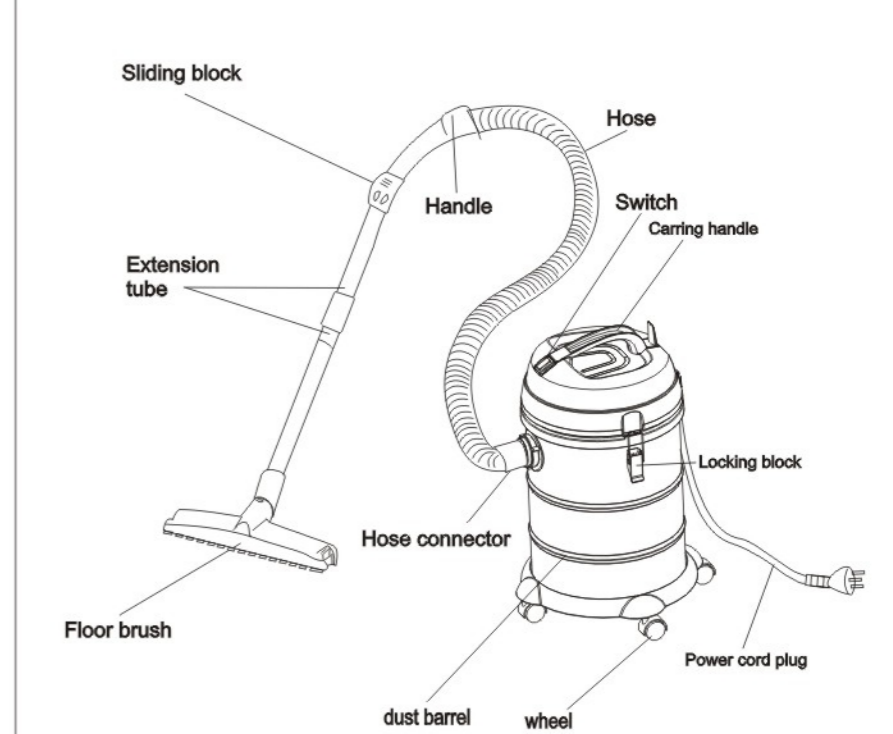
4

OPERATION METHOD



5

PARTS NAME



2