

ELBA

SLOW JUICER
MODEL: ESJ-K6015(RD)

Owner's Manual

Please read this manual carefully before operating your set.

Retain it for future reference.

Record model number and serial number of the set.

See the label attached on the set and quote this information to your dealer when you require service.

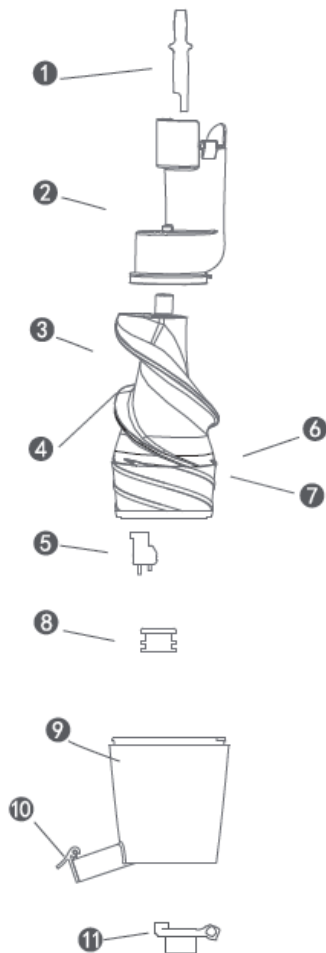
For The Warranty Terms & Conditions, Please Refer To Warranty Certificate.

IMPORTANT SAFEGUARDS

When using this appliance, basic precautions should always be followed, including the following:

1. Read all instructions before using.
2. Do not operate the appliance with damaged power cord or plug, after the appliance malfunction, or if it is dropped or damaged in any manner. Return the appliance to the nearest authorized dealer or after-sales service centre for examination, repair, electrical or mechanical adjustment.
3. Do not use the appliance if the plug, the mains cord or other parts are damaged.
4. Do not let the power cord hang over edge of table or counter or hot surface.
5. Do not place the appliance on or near hot gas or electric burner, or in a heated oven.
6. Do not leave the appliance unattended while operating.
7. Do not operate the appliance for more than 20 minutes continuously at a time. If you have not finished processing after 5 minutes, switch off the appliance and let it cool down before you operate it again.
8. Never use any accessories or parts from other manufacturers or that ELBA does not specifically recommend.
9. Always make sure all the part is properly closed/ assembled on the base unit before you switch on the appliance.
10. Never immerse motor base in water or any other liquids nor rinse it under the tap. Use only a moist cloth to clean the base unit.
11. Do not submerge or hold main body under running water when cleaning. It will cause electric shock or short circuit.
12. Do not put fingers or other object into the feeding tube. Always use provided pusher when needed.
13. Close supervision is necessary when your appliance is being used near children or infirm persons.
14. Always unplug the appliance before you assemble, disassemble or make adjustment to any parts of the slow juicer.
15. Do not operate the appliance for other than its intended use.
16. Do not use this appliance outdoors.
17. This appliance is for domestic use only.
18. This appliance is not intended for use by persons (including children) with reduced physical, sensory or mental capabilities, or lack of experience and knowledge, unless they have been given supervision or instruction concerning use of the appliances by a person responsible for their safety.
19. Children should be supervised to ensure that they do not play with the appliance.
20. Save these instructions for future reference.


PRODUCT DESCRIPTION



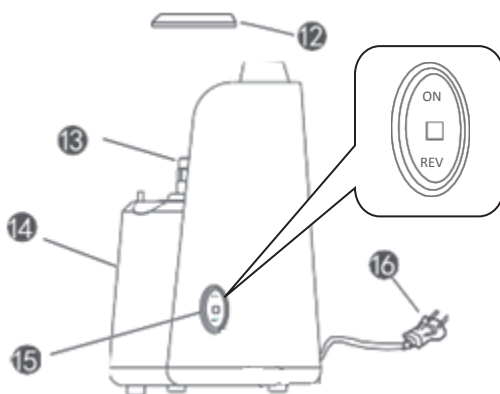
1. Pusher
 2. Top Cover
 3. Squeezing Screw Unit
 4. Squeezing Screw
 5. Juice Push Pad- Install inside if the juice pulp separator
 6. Stainless Steel Filter
 7. Juice Pulp Separator
 8. Lead Proof Ring- Installed inside of the drum
 9. Drum (for pulp outlet and juice outlet)
 10. Juice Cap
 11. Pulp Outlet Sealing –Underneath the drum and can't take out
12. O-Ring – Installed on the upper of body unit
 13. Motor Shaft
 14. Body Unit
 15. Control Switch
 16. Power Plug

Control Switch Button

ON: Activate the motor and operate to squeeze the juice

 : Stop the operation. Place the button at the center to turn off the product

REV: Reverse operation. Use this button when cleaning or Inredient is stuck in.



Accessories



Juice Cup



Pulp Cup



Cleaning Brush

Remark: Juice & Pulp Cup cannot be used in microwave oven or high temperature heating disinfection.

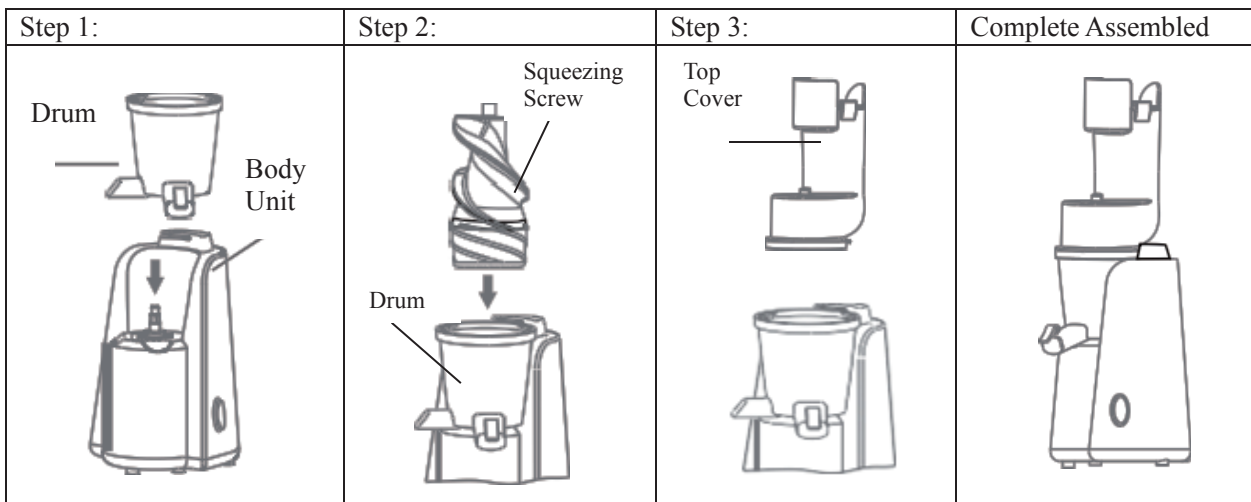
BEFORE FIRST USE

Carefully wipe the exterior of the body unit and clean all the part before start using the appliance. Dry with towel. Do not use harsh abrasive cleaners. Wash all the accessories with soapy water, dry with a dry towel. Do not immerse the supply cord or body unit in water or other liquids.

The appliance has a built in safety lock. This feature ensures that you only can switch on the appliance if you have assembled the flip correctly on the body unit. When assembled the juicer is correct, the build in lock will be unlocked.

ASSEMBLING THE JUICER

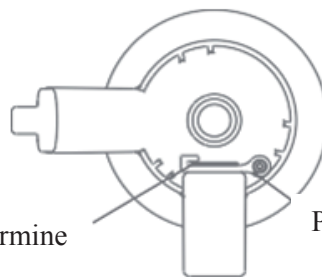
1. Place the drum on top of the base unit, make sure the drum is in position so it can lock and fit in to the position. Direction as arrow show.
2. Place in squeezing screw into the drum and fit into motor shaft of the base unit.
3. Put the top cover on the drum, along the clockwise until hear the “click” sound.



Remark: Please ensure pulp outlet sealing is fit to the position.



The line to determine the position



Pulp Outlet Sealing Pad

Remark: When need to conduct cleaning, follow in reverse method to disassemble.

OPERATING THE JUICER

1. Before start operating the appliance kindly ensures that lead proof ring and juice push pad is assembled and fit to position, as it will affect to the working process of juice leaking.
2. Assembly all the accessories of the appliance. Put juice cup under juice outlet and put pulp cup under pulp outlet. (fig.1) Insert the power plug.
3. Pull the pusher and put in the ingredient one by one into the feeding tube.(fig.2)
4. For big size ingredient is advised to cut into small piece and always insert the prepared ingredients one piece at a time. Pusher can be used to push down the ingredients.

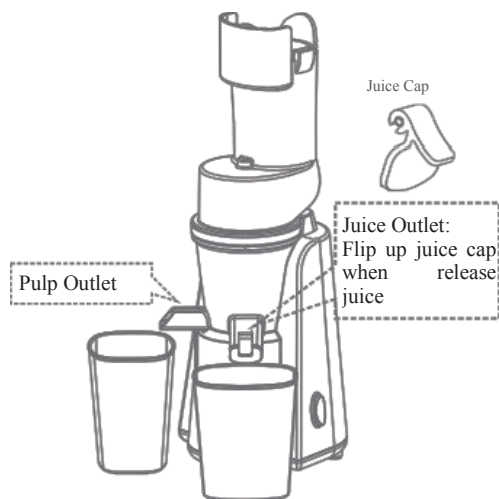


Fig.1

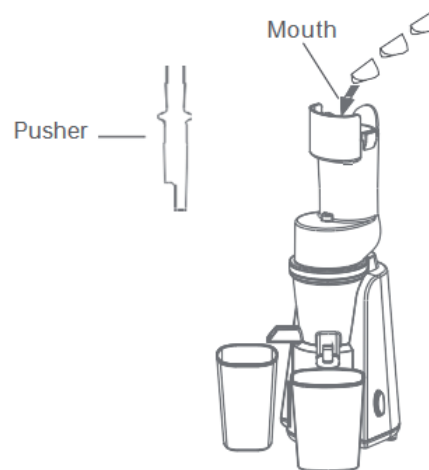


Fig. 2

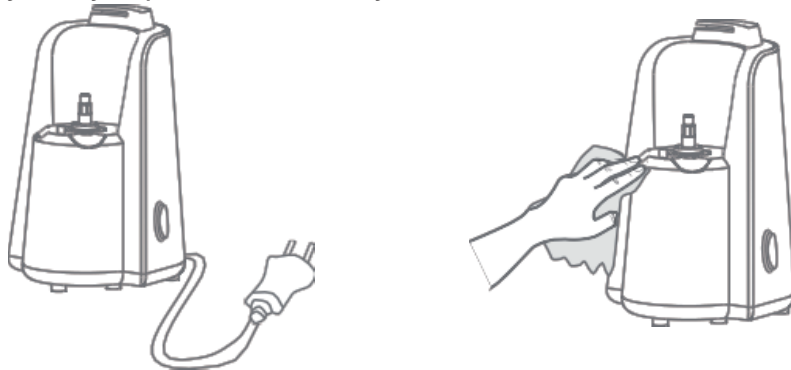
5. Press forward (ON) button to operate. Ingredient will be pull down and squeezing screw slowly masticates the ingredients. Press reverse button, by pushes the ingredients back up to dislodge. To stop the juicing processes by press the button to stop.

TIP FOR JUICING

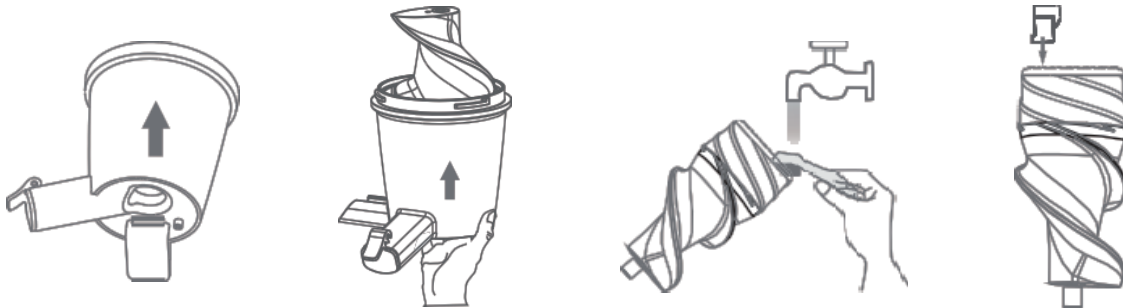
1. For fibrous leafy vegetables (celery or etc) or fruit with hard seeds. Please cut into small piece. During extracting may bundle and alternate the leafy part and stems for optimal result.
2. Insert each slice of fruit and/or vegetables at a regular speed (do not rush), this is to allow all the pulp to extract for maximum efficiency.
3. If juice fruit with hard and inedible skin (i.e watermelon, pineapple, mangoes, etc) always peel the skin before placed in the food chute. For better tasting of citrus juice, remove the inner white peel from the fruit. Fruit with stones or hard seed (i.e mangoes, apricots and cherry etc) should be pitted before juicing. Please do not use this juicer to squeezing sugarcane.
4. A small amount of lemon juice can be added to apple juice to prevent the juice browning.
5. When juicing fruits and vegetables of different consistency, it may help to juice different combination. i.e: juice soft fruit first (i.e Orange) then follow by hard fruit (i.e Apple). This will help to achieve maximum juice extraction.
6. If the ingredients become jammed in the squeezing screw, press the off button. Then press and hold reverse button until the ingredients become dislodged and press ON button to continue.
7. According to the freshness of the ingredients and different harvest time, squeeze the juice quantity are also different.

CLEANING AND MAINTAINANCE

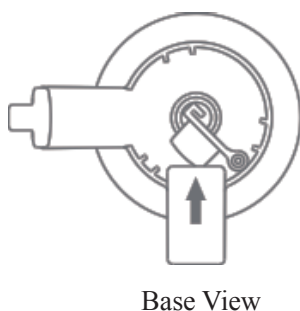
1. Press to stop button and unplug the power plug from the wall outlet.
2. Always only wipe the main body and do not wash with water.



3. Wash removable parts in warm, soapy water the rinse and dry all parts.
Caution: To prevent damage to the appliance do not use harsh solvents, alkaline cleaning agents, abrasive cleaners or souring agents of any kind when cleaning.
4. The parts cannot be sterilized under high temperature.
5. The cleaning brush can be only used for juice pulp separator if wash with other parts it may easy damage.
6. Method to remove and cleaning squeezing screw. Remove the squeezing screw on the main body. From the bottom of the squeezing screw, push with finger along the arrow direction.
 - A) Take out the juice push pad on the juice-pulp separator to clean by using the cleaning brush and rinse with water.
 - B) After cleaning, wipe with dry cloth and put the juice push pad back to the original position.



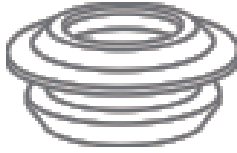
7. Drum Cleaning Method, pick out the pulp outlet sealing pad on the drum, the screw don't have to be removed. Cleaning drum by using soft cloth and do not use cleaning brush. Rinse the water from top to bottom.



Note: In the process of cleaning and using. Please avoid water on hold of the safety switch. If contact with water please be assure to dry it before start for next usage.

8. Leak proof ring cleaning method. Along the direction of the arrow by take out the ring from the hole of the drum. Wipe away the water and the narrow side of the ring embedded to the drum.

Note: The juice cap or sealing parts should be put back to its original position. In order to avoid juice leaking or faulty function)







Leak Proof Ring



Hole of the Drum

TROUBLESHOOTING

Possibility of fault	Troubleshooting methods
Can't work normally	Power plug is not plugged? Please insert the plug into the power supply. Did it correct assembly? Please install the appliance according to the assembly method.
No juice out	<p>The leafy vegetables and the ingredients with more fibrous are difficult to squeeze juice. Please try to use fresh ingredients, cut to small parts to the machine.</p> <p>Did the juice mouth jam? Press switch to "  stop shift, the end of the cleaning brush inserted into the juice outlet of the drum, push aside the jam tiny pulp, when the juice flow out , can rotate the switch to the "ON " forward continue to work.</p> <p>Did the food stuck? Press the switch in the following order: REV, after several seconds press ON and continue to work.</p> <p>If still no juice out? Please turn the switch to "  stop shift, pull the plug, remove the squeezing screw on the drum, clean up the stuck ingredients, power it on to work again.</p>
Stop during the process of running	<p>Did the top cover correct assembly? Press switch to "  stop shift, turn the top cover until hear the Ka-chi scream, the cover closed right and start is again.</p> <p>Whether put too much food? Or work continuously more than 20 minutes? If it is, the motor protection device has been started working, and automatically stop electric appliance. The presence of these conditions happened, please operate as follows: 1. Press the switch to "  stop shift, and pull the plug. 2.Remove the drum, open the top cover, reduce the ingredients.</p> <p>Cover the top cover, insert the power plug, press the switch to "ON" forward shift to continue, it may take your time 3-5 minutes.</p>
Much water in the broken slag	The stainless-steel mesh whether jam? Clear up and clean the strainer.

Possibility of fault	Troubleshooting methods
Noise in operation	According to different ingredients there are much voice will come.
The leakage come the gap between the drum and the main body	Did the leak proof ring correct assembly? Please install correctly.
Is the drum or main body wobbling?	The drum and main body are in separate, it may produce slight shaking because of switching the power supply switch etc.

ELBA

