

ELBA

STEAM IRON

MODEL:ESI-H2023C(RD)

Owner's Manual

Please read this manual carefully before operating your set.

Retain it for future reference.

Record model number and serial number of the set.

See the label attached on the set and quote this information to your dealer when you require service.

For The Warranty Terms & Conditions, Please Refer To Warranty Certificate.

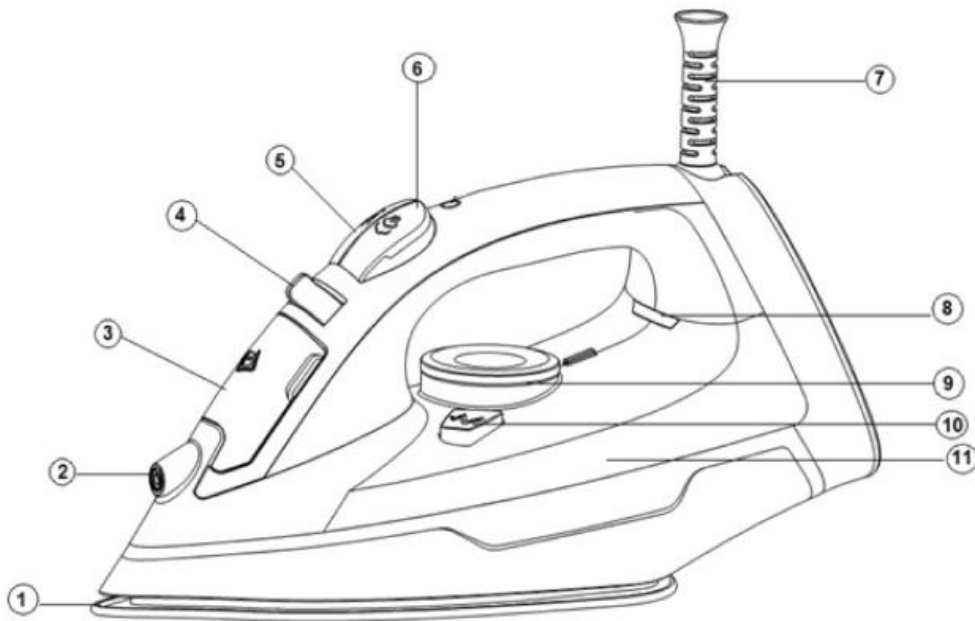
IMPORTANT SAFEGUARDS

When using this appliance, basic precautions should always be followed, including the following:

1. Read all instruction before using.
2. Never leave the iron unattended when it is connected to the power.
3. Do not operate the iron with a damaged cord or if the iron has been dropped or damaged. To avoid the risk of electric shock, do not disassemble the iron on your own. Return the iron to the nearest authorized dealer or after-sales service centre for examination, repair or mechanical adjustment. Incorrect reassembly can cause a risk of electric shock when the iron is used.
4. To protect against a risk of electric shock, do not immerse the iron in water or any other liquids.
5. Never yank cord to disconnect from outlet instead, grasp plug and pull to disconnect.
6. Do not allow the power cord to touch hot surfaces. Let the iron cool down completely before putting away. Loop cord loosely around iron when storing.
7. **Warning:** The soleplate of the iron can become extremely hot right after use and may cause burns if touched.
8. **Do not add chemical additive, scented substances or decalcifies into the water tank.**
9. Always disconnect iron from electrical outlet when filling with water or emptying and when not in use.
10. This appliance is not intended for used by persons (including children) with reduced physical, sensory or mental capabilities, or lack of experience and knowledge, unless they have been given supervision or instruction concerning use of the appliances by a person responsible for their safety.
11. Children should be supervised to ensure that they do not play with the iron.
12. Do not operate the iron for other than its intended use.
13. Do not use the iron outdoors.
14. Save these instruction for future reference.

PRODUCT DESCRIPTION

1. Soleplate
2. Spray nozzle
3. Filler cover
4. Steam /dry dial
5. Spray button
6. Shot-steam button
7. Swivel power cord protector
8. Indicator light
9. Temperature control dial
10. Self-cleaning button
11. Water Tank







USING THE IRON FOR THE FIRST TIME

When using the iron for the first time, you may notice a slight emission of the steam and heard some sound made by the expanding plastic. This is considered normal and it stops after a short time. We also recommend passing the iron over an ordinary cloth before using it for the first time.

PREPARTION TEMPERATURE

Soft the laundry to be ironed according to the international symbols on the garment label, or if this is missing please refer to the type of fabric.

GARMENT LABEL	FABRIC TYPE	THERMOSTAT REGULATION
	synthetic	• low temperature
	silk - wool	•• medium temperature
	Cotton - linen	••• high temperature
	Fabric not to be ironed	

- Start ironing the garment which requiring lowest temperature. This reduce the waiting times (the iron takes less time to heat up than to cool down) and eliminates the risk of scorching the fabric.
- Iron the reserve side of synthetic material and silk to prevent shining spots. To prevent staining do not use the spray on silk or other delicate fabrics.

ANTI-CALC SYSTEM

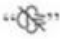
- A special resin filter inside the water reservoir softens the water and prevents scale build-up in the plate. The resin filter is permanent and does not need replacing.
Note: Please only use tap water. Distilled and/demineralized water will cause the “Zero-Calc” anti-calc system ineffective by altering its physicochemical characteristics.

ANTI-DRIP SYSTEM

- With the anti-drip system, you can perfectly iron even the most delicate fabrics.
Always iron these fabrics at low temperatures. The plate may cool down to the point where no more steam comes out, but rather drops of boiling water that can leave marks or stains. In these cases, the Anti-drip system automatically activates to prevent vaporization, so that you can iron the most delicate fabrics without risk of spoiling or staining them.

STEAM IRONING

FILLING THE RESERVOIR

- 1) Check that the plug is disconnected from the socket.
- 2) Move the steam /dry dial  to [Fig. 1].
- 3) Open the filler cover (3).
- 4) Raise the tip of the iron to help the water enter the opening without overflowing
- 5) Slowly pour the water into the reservoir using the special measure and taking care not to go over the maximum level indicated by "MAX" on the reservoir [Fig. 2].
- 6) Close the filler cover (3).

SELECT THE TEMPERATURE

- Put the iron in a vertical position, connect the plug to the wall outlet.
- Set the appropriate ironing temperature instructions or in the fabric table by means of temperature control dial [Fig. 3].
- The indicator light(8) indicates that the iron is heating up, wait until the indicator light goes off before ironing.
- **Warning:** *The indicator light will come on from time to time during ironing. This has no effect on the ironing, so simply continue. If you set the temperature control to a lower setting after ironing at a high temperature, do not recommence ironing before the indicator light comes on again.*

SELECT THE STEAM

- The quantity of steam is regulated by the steam /dry dial (4).
- Move the steam /dry dial (4) to a position between minimum and maximum depending on the quantity of steam required and the temperature selected [Fig. 1].
- **Warning:** *The iron gives off steam continuously only if you hold the iron horizontally. You can stop the continuous steam by placing the iron in a vertical position or by moving the steam /dry dial (4) to "OFF". As indicated on the temperature control dial (9) and in the initial table, you can only use steam*

at the highest temperatures. If the selected temperature is too low, water may drip onto the plate.


SELECT THE SHORT-STEAM

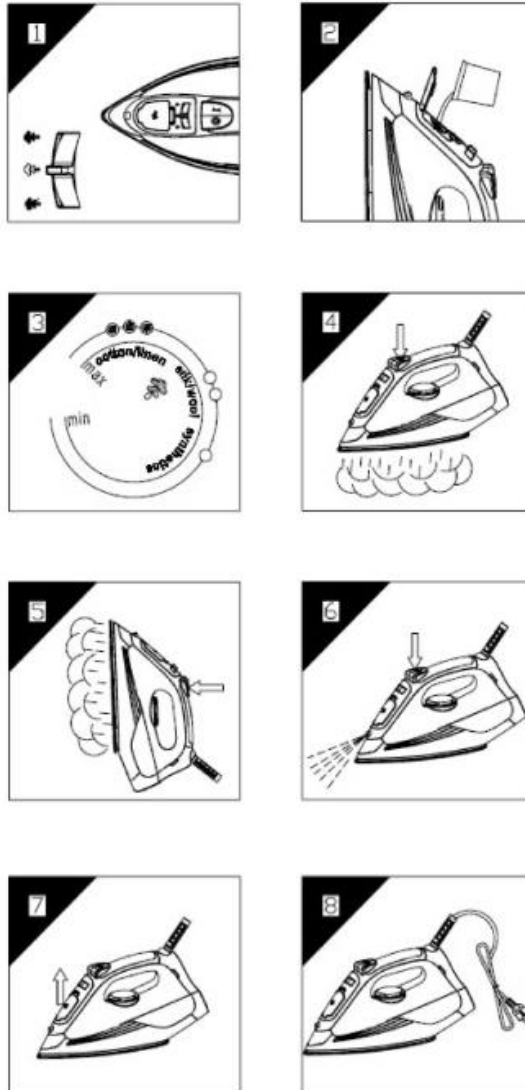
- Press the shot-steam button (6) to generate a powerful burst of steam that can penetrate the fabrics and smooth the most difficult and tough creases. Wait for a few seconds before pressing again [Fig. 4].
- By pressing the shot-steam button at intervals you can also iron vertically (curtains, hung garments, etc.) [Fig. 5].
- **Warning:***The shot-steam function can only be used at high temperatures. Stop the emission when the plate indicator light (8) comes on, than start ironing again only after the light has gone off.*

SPRAY IRONING

- Make sure that there is water in the reservoir. Press the spray button (5) slowly (for a dense spray) or quickly (for a vaporized spray) [Fig. 6].
- **Warning:***For delicate fabrics, we recommend moistening the fabric beforehand using the spray button (5), or putting a damp cloth between the iron and the fabric. To avoid staining, do not use the spray on silk or synthetic fabrics.*

DRY IRONING

- To iron without steam, turn the dry dial (4) to for  no steam.



CLEANING AND MAINTENANCE

- Before cleaning remove the mains plug from the wall outlet, let the iron to cool down sufficiently.
- The appliance can be cleaned with a damp cloth.

SELF-CLEAN FUNCTION

The self-cleaning feature cleans inside the plate, removing impurities. We recommend using it every 10-15days.

- Directions:
 - Fill the reservoir up to the maximum level indicated and set the steam/dry dial (4) to “OFF”[Fig. 1].
 - Set the temperature control dial (9) to the maximum temperature and wait for the indicator light(8) to turn off.
 - Pull the plug out of the socket and hold the iron horizontally over the sink.
 - Hold the self-cleaning button (10) setting until all the boiling water, steam, and impurities come out.
 - When the soleplate has cooled down, you can clean it with a damp cloth.

STORING THE IRON

- Disconnect the plug of the iron from the socket.
- Empty the reservoir by turning the iron upside down and gently shaking it.
- Leave the iron to cool down completely.
- Roll up the power cord with the rewinder [Fig. 8].
- Always put the iron away in a vertical position.

IRONING TIPS

- We recommend using the lowest temperature with fabrics that have unusual finishes (sequins, embroidery, flush, etc.).
- If the fabric is mixed (e.g. 40% cotton 60% synthetics), set the temperature to the temperature of the fibre requiring the lower temperature.
- If you do not know the composition of the fabric, determine the suitable temperature by testing on a hidden corner of the garment. Start with a minimum temperature and increase it gradually until it reaches the ideal temperature.
- Never iron areas with traces of perspiration or any other marks. The heat of the plate fixes the stains on the fabric, making them irremovable.
- The size is more effective if you use a dry iron at a moderate temperature, excess heat scorches it with the risk of forming a yellow mark.

ELBA