

ELBA

MICROCOMPUTER RICE COOKER

MODEL: ERC-N1883D(SS)

Owner's Manual

Please read this manual carefully before operating your set.

Retain it for future reference.

Record model number and serial number of the set.

See the label attached on the set and quote this information to your dealer when you require service.

For The Warranty Terms & Conditions, Please Refer To Warranty Certificate.

SAFETY NOTICE

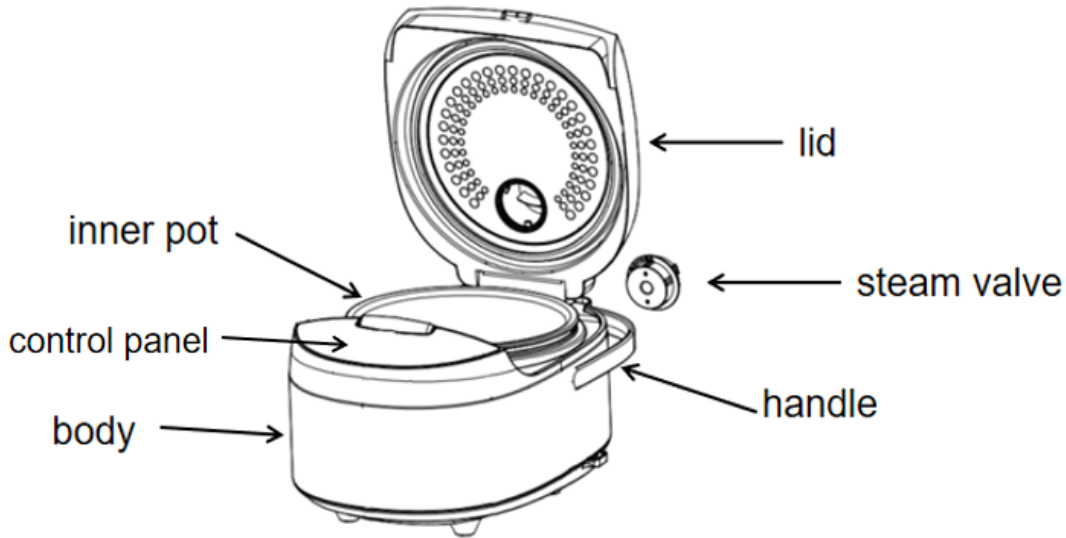
When using this product, basic safety precautions must be followed including the following:

1. Do not disassemble or repair this product by yourself.
2. It is forbidden to use the rice cooker next to flammable and explosive items or in a humid environment.
3. Please insert the power cord into the body socket and the power socket respectively, making sure to insert it completely. Otherwise, it may cause electric shock, short circuit or even fire Disaster accident.
4. Do not let children operate it alone or place it where children can reach it. So as not to cause accidents such as electric shock and burns to children.
5. Do not move the rice cooker during the working process. When moving the rice cooker, please make sure that the power cord of the product is unplugged.
6. Please unplug the power cord from the power outlet when not in use.
7. Do not cover the exhaust port with cloth during the working process, and do not place other items on the pot body.
8. Do not open the lid during the working process, please pull out the power plug or open it after the work is over.
9. During or shortly after work, please do not touch high-temperature parts, such as inner cover, exhaust port, inner pot or heating plate, etc.
10. Do not place the inner pot directly on an open flame or other heating equipment, otherwise the inner pot may be deformed.
11. Before cooking, please be sure to install the anti-overflow steam valve on the upper cover correctly to avoid accidents caused by burns and damage to the rice cooker.
12. When cleaning the rice cooker, please pull out the power plug first, and do not immerse the rice cooker in water.
13. The normal working altitude of the product is 0~2000 meters.
14. If the power cord is damaged, it must be replaced with a special flexible cord or a special component purchased from its manufacturer or maintenance department, and do not disassemble it by yourself.
15. To prevent electric shock or damage of rice cooker, do not immerse cord, plug or product in water or other liquids.
16. This appliance is not intended for use by person (including children) with reduced physical, sensory or mental capabilities, or lack of experience and knowledge, unless they have been given supervision or instruction concerning use of appliance by a person responsible for their safety.
17. Only use the rice scoop provided, clean with damp sponge or soft scouring pad to avoid damaging inner coating. After a long time use, interior coating may fell a little but no harm for your health.
18. Always keep the outside bottom of the pot and the heating plate clean and dry. Please don't pour the rice or water directly into the safeguard frame without inner pot.

SPECIFICATION

Model	Voltage	Power	Capacity
ERC-N1883D(SS)	220-240V ~ 50-60Hz	860W	1.8L

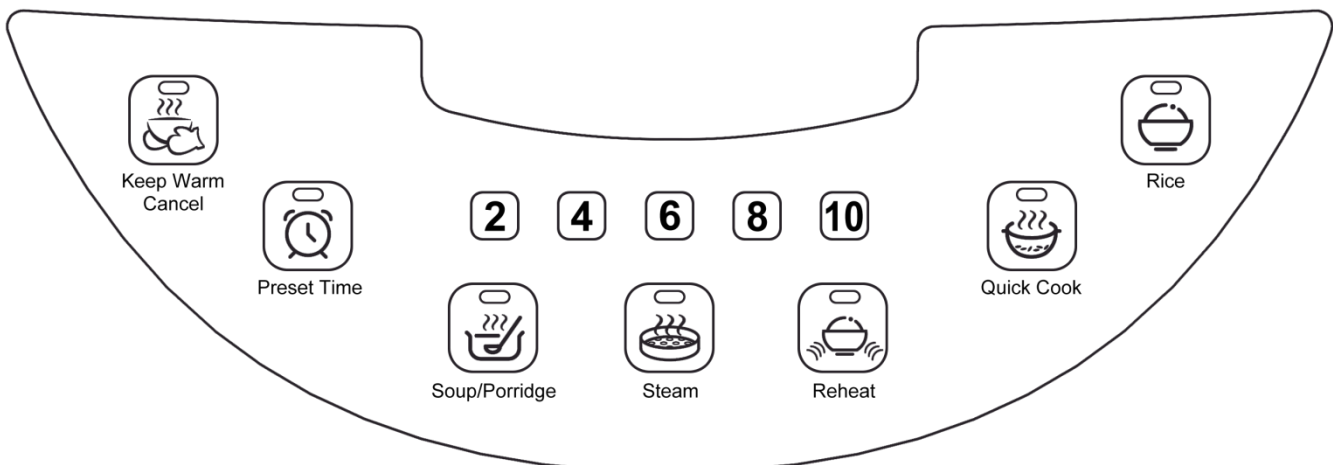
PRODUCT OVERVIEW



ACCESSORIES

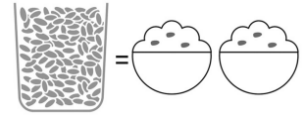


CONTROL PANEL

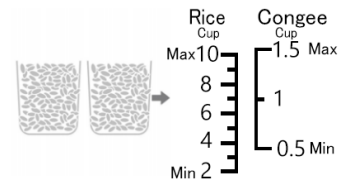


BEFORE COOKING

1. Rice measuring: One cup of rice is enough for two bowls of cooked rice, where the diameter of bowl is around 11.5 cm.



2. Pour rice and water: Taking cooking two bowls of non-glutinous rice for example, put washed rice into the inner pot, and add water to corresponding scale mark of 2 (Water level is subject to the actual rice type).



INSTRUCTIONS FOR USE

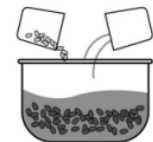
All functions should not exceed their corresponding highest water level; do not wash rice with the inner pot.

PRESET COOKING

- 1) Put the washed rice into the inner pot, and add water to the corresponding scale mark. Put the inner pot into the body, close the lid. Connect the power cord, make sure the power plug is connected completely.
- 2) Press "Preset Time" button, then press "2" "4" "6" "8" or "10" to choose the time you need.
- 3) Then choose the needed cooking function to enter preset mode. The preset time is duration from the presetting to the moment of completing the cooking.
- 4) The selected cooking function preset time cannot be less than the cooking time, such as "Soup/Porridge", the cooking time is 2h, and the preset time must be greater than 2h, otherwise, the cooking will start immediately.

RICE/QUICK COOKER/REHEAT/STEAM/SOUP&PORRIDGE FUNCTION

- 1) Put the washed rice into the inner pot, and add water to the corresponding scale mark by reference to rice water ratio.
- 2) Close the lid, press the corresponding button to choose the cooking function you need. After selecting the needed function, it will be entering into the cooking mode automatically after 5 seconds.



REHEAT

It is suggested that the rice not exceed the scale mark 8 when using the reheat function.

- 1) Stir the rice and sprinkle some water on the rice surface.
- 2) Close the cover and select the "Reheat" button



KEEP WARM

- 1) Press the "Keep Warm/Cancel" button to enter the heat preservation function
- 2) It is suggested to stir the rice after 30mins in the heat preservation state for better taste

NOTE:

- After cooking is completed, it will automatically enter the heat preservation state;
- In the keeping warm state, it will reheat the food to maintain the temperature over 65°C
- The product can maintain the heat preservation state for 24 hours

COOKING TIME

Cooking time for each function:

Menu	Rice	Quick Cook	Reheat	Steam	Soup/Porridge
Cooking time	0:45	0:30	0:30	0:30	2:00

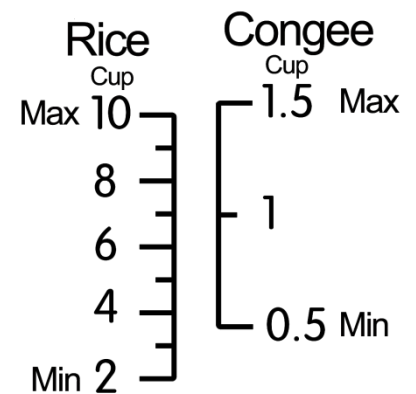
WATER SCALE

Cooking rice: when adding water, the water line should be selected according to the corresponding rice.

Rice type	White rice	Brown rice	Mixed rice
Max. rice	10 cups	6 cups	6 cups
Min. rice	2 cups	2 cups	2 cups

Cooking congee: when adding water, the water line should be according to the scale mark for congee

Capacity	Max. rice	Min. rice
1.8L	1.5 cups	0.5 cup



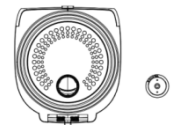
CLEANING AND MAINTENANCE

When cleaning, please make sure that the rice cooker is power off

Cleaning the cover plate

The cover plate is non-removable, wipe it with a wet cloth and wipe it dry.

The inner steam valve is detachable, take it off, clean it with water and wipe it dry.



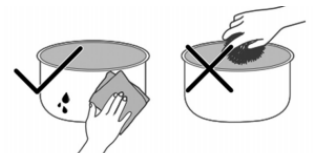
Cleaning the housing

It is necessary to clean water, rice, sundries and others on the coil; The casing cover has water storage function. Please keep it Clean.



Cleaning the inner pot

Take out the inner pot, clean it outside and inside with a soft sponge and wipe it dry by a piece of soft cloth.



TROUBLESHOOTING

PROBLEM	POSSIBLE CAUSE	SOLUTION
Over soft, over hard, over sticky, over thin, under-cooked, overcooked, rice water spillage, insufficient boiling	<ul style="list-style-type: none"> - Failed to add water according to the water line. - Wrong function selected. - Steam valve not well installed. - Inner pot deformation 	<ul style="list-style-type: none"> - Add water according to the water line. - Select the corresponding function. - Install the steam valve in place. - Contact after-sales service to replace the inner pot
Bad smell, color change, or drying during heat preservation	<ul style="list-style-type: none"> - Matters of the sealing ring and the rim of the inner pot. - Air leakage. - Overlong heat preservation 	<ul style="list-style-type: none"> - Deal with the matters. - Contact after-sales service to replace the sealing ring. - Heat preservation time is suggested to be no more than 5 hours.
Abnormal sound during cooking	<ul style="list-style-type: none"> - Water is not wiped off from the inner pot. - Relay on-off sound 	<ul style="list-style-type: none"> - Wipe off water from the inner pot surface before cooking. - Normal phenomenon
Display show E1	<ul style="list-style-type: none"> - Bottom sensor open circuit. 	Pull out and re-connect the power cord, if the display still shows E1, please send to designated after sales service to repair
Display show E2	<ul style="list-style-type: none"> - Bottom sensor short circuit. 	Pull out and re-connect the power cord, if the display still shows E2, please send to designated after sales service to repair
Display show E3	<ul style="list-style-type: none"> - Boil dry/overheat protection 	Cut off the power and check if the inner pot was put in place properly or boil dry
Display show E4	<ul style="list-style-type: none"> - Top lid sensor open circuit 	Pull out and re-connect the power cord, if the display still shows E4, please send to designated after sales service to repair
Display show E5	<ul style="list-style-type: none"> - Top lid sensor short circuit 	Pull out and re-connect the power cord, if the display still shows E5, please send to designated after sales service to repair

ENVIRONMENTALLY FRIENDLY DISPOSAL

Do not dispose of electrical appliances with general municipal waste. Hazardous substances can leak and contaminate the groundwater, affecting the food chain and ultimately damaging the environment and your health. Contact your local municipality for information on safe disposal in your area.



ELBA