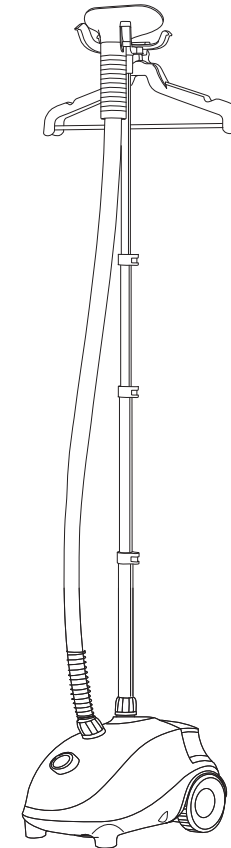


ELBA



ELBA

**GARMENT STEAM IRON
MODEL:EGSI-G1842(LB)**

Owner's Manual

Please read this manual carefully before operating your set.

Retain it for future reference.

Record model number and serial number of the set.

See the label attached on the set and quote this information to your dealer when you require service.

For The Warranty Terms & Conditions, Please Refer To Warranty Certificate.

IMPORTANT SAFEGUARDS

When using this appliance, basic precautions should always be followed, including the following:

1. Read all instructions before use.
2. To avoid the hazard caused by the overload of the circuit, do not use the extension cord.
3. Do not immerse the appliance, power cord or plug in water or any other liquids.
4. Do not leave this appliance unattended while it is in operating or it is still hot.
5. Do not contact directly the steam head to people, animals or cloth that one is wearing.
6. To reduce the risk of electric shock, do not disassemble or attempt to repair the appliance on your own. Return the appliance to the nearest authorized service center for examination, repair or adjustment.
7. The use of foreign accessory attachments that are not supplied by ELBA is not recommended as it may result in fire, electric shock or personal injury.
8. Please fill in water before power on the appliances. Observe the water level in the water tank while operating.
9. Do not lay the hose on the ground or wind it.
10. Only use the steam head in an up and down vertical position. Never use the steam head in a horizontal position or tilt into a backward position, this may result in water discharge.
11. Be cautious of hot steam that sprays out from the steam head. To reduce the risk of contact with hot steam emitting from the steam head, hold the handle away from your body while operating the appliance.
12. Move the appliance by grasping the telescopic pole. Do not force the casters if they are struck. Drain the water from water tank and water reservoir before inspecting the casters.
13. Allow the appliance to cool completely for at least 30 minutes and drain the water from the water tank and water reservoir before storing.
14. Always unplug the appliance before refilling or draining.
15. Unplug the appliance before cleaning, moving or when the appliance is not in use.
16. Keep the appliance away from inflammable materials and chemicals.
17. Do not operate the appliance in the event of abnormality, or damage to the cord or the plug.
18. Grasp the plug to unplug it, do not unplug by pulling the power cord.
19. Do not fill the water tank with hot water, corrosive cleaning agent, perfume, vinegar, starch, ironing aids or any other chemicals, or otherwise, the appliance will be damaged. De-mineralized water or distilled water is strongly recommended.
20. Use this appliance for its intended use only.
21. This product has been designed for domestic use only. Any commercial use, inappropriate use or failure to comply with the instructions, the manufacturer accepts no responsibility and the warranty will not apply.
22. This appliance is intended for household use only. This is a floor appliance and never carries it while in use.
23. Children must be supervised to ensure that they do not play with the appliance.
24. This appliance is not designed to be used by people (including children) with a physical, sensory or mental impairment, or people without knowledge or experience, unless they are supervised or given prior instructions concerning the use of the appliance by someone responsible for their safety.

PRODUCT DESCRIPTION

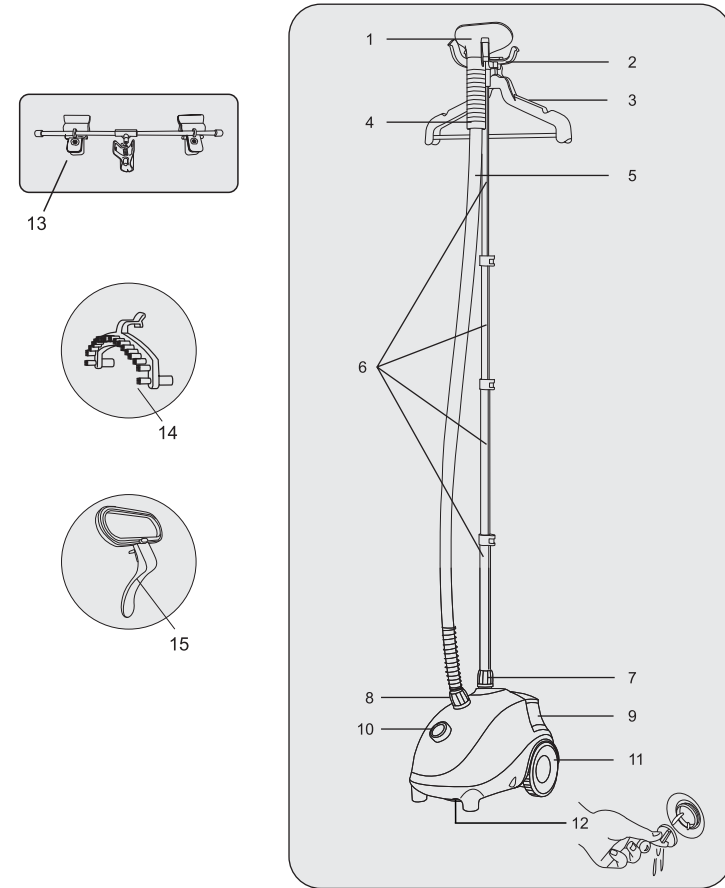


FIGURE 1

1	Steam head	9	Water tank
2	Steam head holder	10	Temperature control
3	Cloth hanger hook	11	Casters
4	Handle	12	Drainage valve
5	Hose	13	Holding nips
6	Telescopic pole	14	Fabric brush
7	Pole locking nut	15	Pant press
8	Hose connector nut		

ASSEMBLY INSTRUCTIONS

Before installing, please check carefully the product package to avoid missing any parts, for some of them place at the sides of polystyrene foam.

1. Unscrew the pole locking nut. Insert the telescopic pole and lock in place. (see figure 2)
2. Unlock the telescopic pole lock to extend the pole to desired height and lock in place. (see figure 3) Attach the hanger to the top and lock in place. (see figure 4)
3. Insert and connect the hose with the hose connector nut. Screw the hose connector nut to lock in place. (see figure 5)

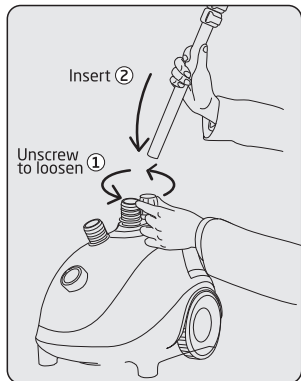


FIGURE 2

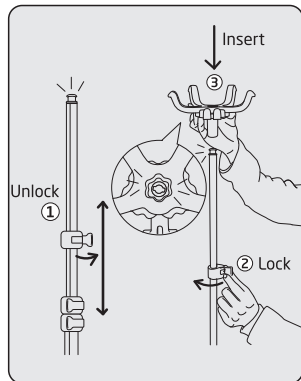


FIGURE 3

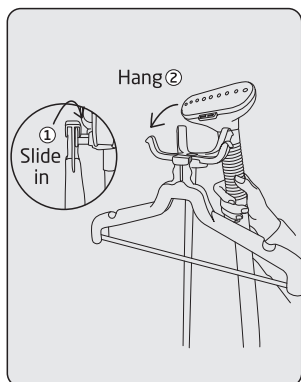


FIGURE 4

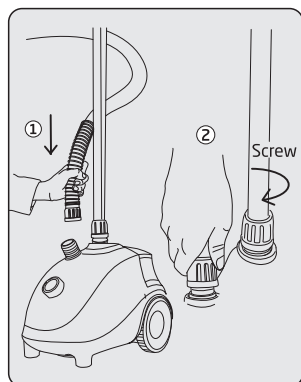


FIGURE 5

CAUTION:

1. Always hang the steam head on the steam head holder when not in use to prevent scalding.
2. The telescopic pole must be fully extended during steam operation to ensure smooth lining of the hose and provide a free flow of steam.
3. Do not pull the hose with excessive force or else damage will occur and cause steam leakage. Do not move the appliance by pulling the hose. Move the appliance by grasping the telescopic pole.

FABRIC BRUSH AND PANT PRESS ASSEMBLY

The garment steam iron comes with fabric brush and pant press. To attach these accessories to the steam head.

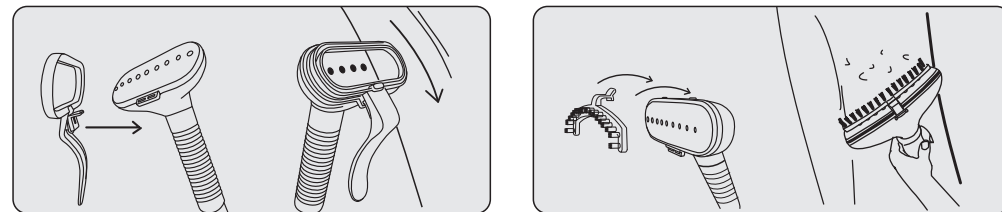


FIGURE 6

1. Turn off the appliance and wait until no steam is emitted from the steam head.
2. Assemble the flute of fabric brush / pant press towards the peg that at the bottom of steam head.
3. Push the fabric brush / pant press gently until it is firm in place.

CAUTION: Do not install the accessories while steam is emitting from the steam head to avoid burns!

HOLDING NIPS AND CLIPS ASSEMBLY

1. Insert the pin A1 and pin A2 on the clip A in hole B1 and B2 to fix the holding nips on the telescopic pole as per figure 7.
2. Fix the two clips on the lower bar of folding rack (figure 8).

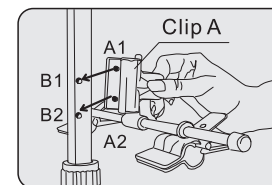


FIGURE 7

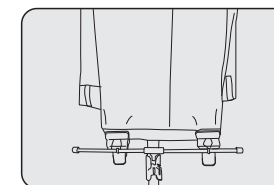


FIGURE 8

3. Hang the garment such as trousers you wish to steam and fix it by the two clips and the holding nips as shown in figure 9.

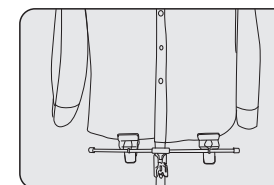


FIGURE 9

OPERATING THE APPLIANCE

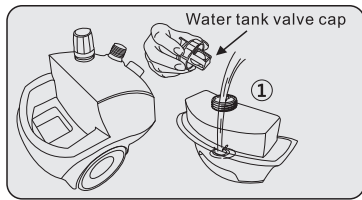


FIGURE 10

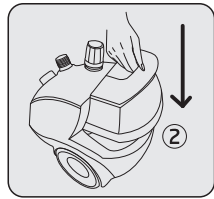


FIGURE 11

1. Unplug the power cord, and turn the switch to the “OFF” position.
2. Remove the water tank, turn it upside down, and unfasten the water tank valve cap (see figure 10). Fill the water tank with cool water, and fasten the valve cap. Do not use hot water!
3. To prolong the lifetime of your garment steam iron, we recommend to use distilled or demineralized water. Place the water tank back into the unit and make sure it sits properly and securely in the cavity (see figure 11).

Note: Do not let the appliance operate with a dry water tank, as it may cause damage to the unit!

4. Connect the plug to the wall outlet and power on. Turn on the switch to silk, cotton or linen position and the indicator lamp will light up. Steam should start flowing from the steam head's in approximately 45 seconds.
5. When you have finished with your steaming session, turn the switch in the “OFF” position and power off the appliance. Remove the plug from the outlet.

USING THE FABRIC BRUSH

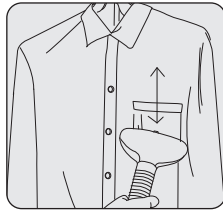


FIGURE 12

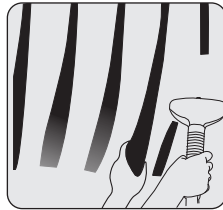


FIGURE 13

1. To steam a garment, place it on a clean, rust-free clothes hanger and place the hanger on the cloth hanger hook.
2. Grasp the handle, and place the steam head at the bottom of the garment. Steam will rise along the inside and outside of the fabric to remove wrinkles. Slowly slide the steam head vertically, from the top to the bottom (figure 12) of the garment steam iron. Do not allow kinks to form in the hose at any time.
3. Move the steam head from bottom to top on the garment, and smooth the fabric with your free hand.
4. Repeat step 2 and 3 as necessary until the fabric is wrinkled free.
5. Curtains and draperies can be steam while still hanging. Refer to figure 13.
6. Heavier fabrics may require repeated steaming.
7. To remove stubborn wrinkles, the fabric brush may also be used.
8. Be careful when handling garments on the cloth hanger hook. Pulling on the garment with too much force may cause the unit to tip.

HOW TO USE THE DRAINAGE VALVE

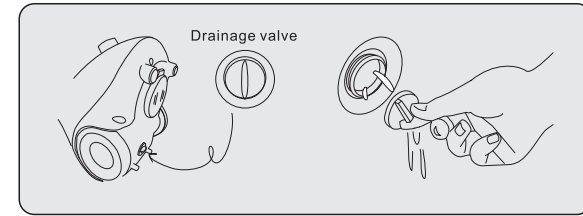


FIGURE 14

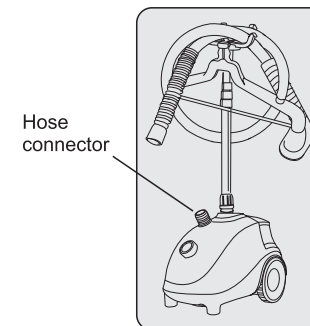
1. Unscrew the drainage valve which is at the back of the appliance anticlockwise. Refer to figure 14.
2. Empty the water reservoir after finished steaming, when the appliance is not in use or before storage. This is to avoid water deterioration and bacteria breeding. Fasten the drainage valve after all the water is drained off before storage.

NOTE: Do not touch the water reservoir's inlet hole right after steaming. Allow the appliance to cool completely for at least 30 minutes before draining to avoid scalding to hands.

CLEANING AND MAINTENANCE

We recommend you follow this procedure at least once per week.

1. Turn the switch to “OFF” position and power off the appliance.
2. Unplug the unit from the wall outlet.
3. Allow the steam head to cool down for at least 30 minutes.
4. Disconnect the hose from the hose base and shorten the telescopic pole, then set them aside.
5. Remove and drain the water from water tank. Rinse the water tank with fresh water, and drain completely. Place the water tank back on the water reservoir.
6. Drain the steamer by removing the drain plug and emptying the contents.
7. Flush the unit by filling the water reservoir and the hose connector with fresh water and draining completely.
8. Wrap the hose around the telescopic pole one time. Place the steam head on the steam head holder.



REMOVING MINERAL BUILD-UP

It is common for minerals found in hard water to build up inside the appliance, causing intermittent or weak steam. If you do not use de-mineralized or distilled water in your steamer, follow these steps monthly:

1. Turn the unit off, and unplug the power cord.
2. Remove the hose and telescopic pole from the unit.
3. Drain the water reservoir by unfasten the drainage valve. Empty water from the water tank.
4. Mix a solution of 50% vinegar and 50% water. In most cases, 2 cups of this solution will be sufficient.
5. Slowly pour the water-vinegar solution into the hose connector.
6. The water-vinegar solution will become visible in the water reservoir's inlet hole, continue to pour the solution into the hose connector until it is full, monitor from the hose inlet.
7. Allow the water-vinegar solution in the hose connector for 40 minutes.
8. After that, drain the solution out of the water reservoir by removing the drainage valve to allow the liquids to drain into a sink.
9. Drain the remaining solution out from the hose connector by tilting the unit over a sink.
10. Pour clean water into the hose connector and water reservoir inlet and drain again. Repeat this step until the vinegar odor dissipates.
11. Reassemble the unit and operate normally.

If this procedure does not return the unit normal operation, the unit may need servicing.

TROUBLE SHOOTING

Problem	Reasons	Solution
The unit fails to steam. The indicating lamps did not light up.	The appliance is not plugged in.	Connect the plug to the wall outlet and power on.
	Household circuit breaker / ground fault interrupter is tripped or fuse is blown.	Check the power outlet. If you need assistance, contact a qualified electrician.
The unit fails to steam. The indicating lamp is on.	Mineral built-up in the unit.	Refer to the removing mineral build-up.
	The water tank is empty.	Refill the water tank.
Excessive gurgling of hose and steam head.	Condensation in hose.	Some gurgling is a natural effect of the steam process. For excessive gurgling, extend the hose vertically to allow water to drain back into the water reservoir.
Steam is intermittent.	Mineral build-up in the unit.	It's normal for the unit to periodically stop steaming for a few seconds. If the steam stays off for longer periods, follow the removing mineral build-up procedure.