



ELBA

BLENDER

MODEL: EBG-K1556G(BK)

Owner's Manual

Please read this manual carefully before operating your set.

Retain it for future reference.

Record model number and serial number of the set.

See the label attached on the set and quote this information to your dealer when you require service.

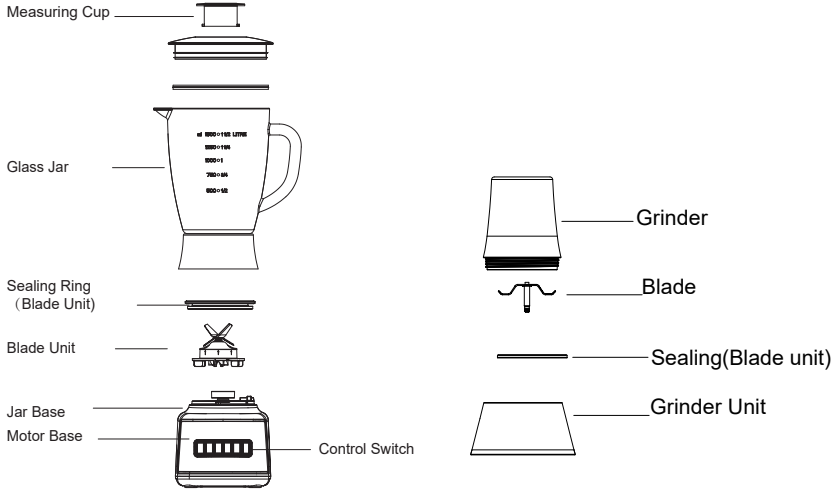
For The Warranty Terms & Conditions, Please Refer To Warranty Certificate.

IMPORTANT SAFEGUARDS

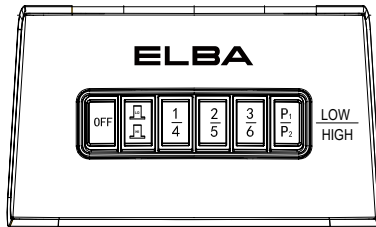
When using this appliance, basic precautions should always be followed, including the following:



1. Read all instructions before using.
2. Do not operate the appliance with damaged power cord or plug, after the appliance malfunction, or if it is dropped or damaged in any manner. Return the appliance to the nearest authorized dealer or after-sales service centre for examination, repair, electrical or mechanical adjustment.
3. Do not use the appliance if the plug, the mains cord or other parts are damaged.
4. Do not let the power cord hang over edge of table or counter or hot surface.
5. Do not place the appliance on or near hot gas or electric burner, or in a heated oven.
6. Do not leave the appliance unattended while operating.
7. Do not touch the cutting edges of the blender blade unit when you clean it. They are very sharp and you could easily cut your fingers on them.
8. Do not operate the appliance for more than 2 minutes continuously at a time. If you have not finished processing after 2 minutes, switch off the appliance and let it cool down before you operate it again.
9. To prevent failure of the appliance, make sure that no food or liquids enter the connection point between the blade unit interface and the motor base.
10. To reduce the risk of injury, never place blade assembly on motor unit without the jar properly attached.
11. Never reach into the glass blender with your fingers or an object while the appliance is running.
12. Never use any accessories or parts from other manufacturers or that ELBA does not specifically recommended.
13. Oversized foods or metal utensils must not be inserted into the glass jar as they may cause fire or risk of electric shock.
14. If foods stick to the wall of the glass jar, switch off the appliance and unplug it. Use a spatula to remove the foods from the wall.
15. Always make sure the jar cover is properly closed/ assembled on the glass jar and the lid is inserted properly in the jar cover before you switch on the appliance.
16. Never immerse motor base in water or any other liquids nor rinse it under the tap. Use only a moist cloth to clean the motor base.
17. Close supervision is necessary when your appliance is being used near children or infirm persons.
18. Always unplug the appliance before you assemble, disassemble or make adjustment to any parts of the blender.
19. Do not operate the appliance for other than its intended use.
20. Do not use this appliance outdoors.
21. This appliance is for domestic use only.
22. This appliance is not intended for used by persons (including children) with reduced physical, sensory or mental capabilities, or lack of experience and knowledge, unless they have been given supervision or instruction concerning use of the appliances by a person responsible for their safety.
23. Children should be supervised to ensure that they do not play with the appliance.
24. Save these instructions for future reference.

PRODUCT DESCRIPTION



CONTROL PANEL



Control switch	Descriptions
OFF	No power at this stage.
	Low – For low speed selection from speed 1 to 3 and P1
	High - By pressing to choose for high speed selection from speed 4 to 6 and P2
Speed 1 to 3	This switch is best for mixing soft ingredients, preparing milkshake, and for easy cleaning. For cleaning, insert some clean water (never above the maximum level) to clean the glass.
Speed 4 to 6	Best speed for preparing puree, smoothie and iced drink.
LOW PULSE <P1>	To dice, chop and prepare salsa.
HIGH PULSE <P2>	To grind, crush ice and grate.

SAFETY LOCK

This feature ensures that you can only switch on the appliance if you have properly assembled the glass jar on the motor base. When the glass jar is correctly assembled on the motor base, the jar seating will push the built-in safety lock on the motor base until it functions.

*** When moving or handling the blender, the whole unit cannot be tilted in order to prevent the glass jar from falling down.**

OPERATING THE APPLIANCE

1. Unpack the appliance and place it on a flat horizontal counter top. Check all the parts whether all in good condition.
2. Clean the removable parts before using including the lid, jar cover and glass jar. Make sure all parts are dry thoroughly before re-assemble.

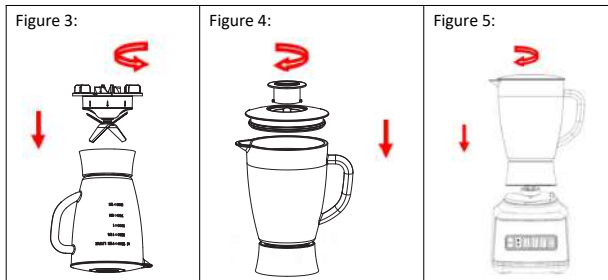
Tips for assembly:

Invert the jar onto a flat horizontal surface, holding the jar handle and put the seal ring and blade assembly onto the jar bottom and secure the blade assembly by turning it anti-clockwise until tight (Fig 3).

Reposition the jar assembly with its opening upwards. Put the jar cover and place the measuring cup into position by turning the cup clockwise until tight. (Fig 4).

Finally, place the assembled jar onto the motor base by aligning the indication on the assembled jar base (Fig 5).

Caution: Jar and jar base is now fit securely. Do not try to twist the jar and jar base onto motor unit.



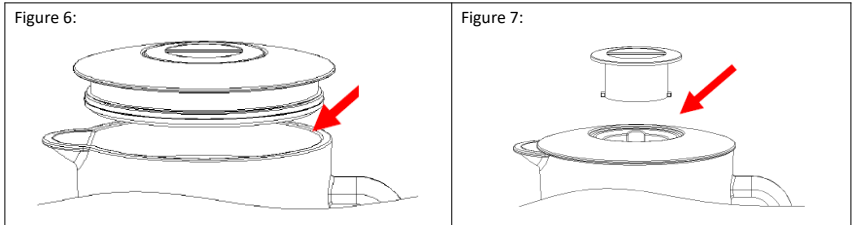
3. Make sure that the control switch is not pressed at any speed setting position.
4. Peeled or cored the fruits or vegetables and then cut it into small dices. Insert the ingredients into the glass jar. (Fig 6) Usually, certain amount of purified water has to be added to facilitate the smooth running of the appliance. The proposition of the food and water should be 2:3. The amount of mixture should not exceed the maximum level as indicated on the jar.

WARNING: Never use boiling water or any other liquids to mix into the ingredients.

NOTE: Never let the appliance to operate empty.

5. Power on the appliance and select the desired switch.
6. Press any switch at the control panel according to the food that needed to be blend (refer to the control panel descriptions) for guideline.

7. For quick or delicate blending tasks, press the "PULSE" and hold for a few seconds and then release, the appliance will reset to off position automatically. Operate several times until obtaining the result you wanted.
8. If you want to add ingredients while blending, slowly remove the lid from the jar cover and place the ingredients through the lid (Fig 7).



9. Always switch off the appliance by setting the control switch to "OFF" position before you open the jar cover.
10. To crush ice, add up to 6 ice cubes. If more ice is needed, remove the lid and add cubes one by one through the lid opening. When crushing ice or hard food, keep one hand firmly on the glass jar cover.
11. After the blending process is finished, press the "OFF" switch and power off the appliance. Unplug the plug from wall outlet after use.

TIPS FOR USING THE BLENDER & GRINDER

1. To achieve the best result when pureeing solid ingredients, place small portions into glass jar one by one instead of placing a large quantity all at once.
2. If you are processing solid ingredients, cut them into small pieces (2-3cm) first before putting them into the glass jar.
3. When mixing solid ingredients start off with a small amount of liquid. Gradually add more liquid through the opening of the lid.
4. Always place your hand on top of the blender when operating the appliance.
5. The function for "LOW PULSE" and "HIGH PULSE" are designed for short-time blending (a few seconds), which makes it easy to control the blending results.
6. Do not operate the appliance for more than 2 minutes continuously at a time. If you have not finished processing after 2 minutes, switch off the appliance and let it cool down before you operate it again.
7. For grinder, food (bean, rice, peanut, broad bean and coffee bean etc), that are to be milled must be sun dried with foreign materials removed.
8. Put food into grinder and lock it onto the motor base. Do not add in water when grinding.

Remark:

The quantity of food to be allowed to grind is Max 35g.

CLEANING AND MAINTENANCE

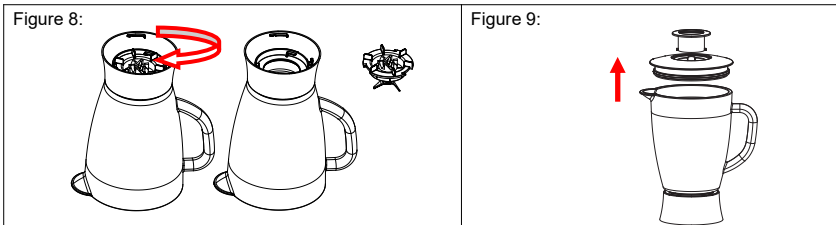
1. Firstly, pour some warm soupy water into the glass jar. With the jar covered, presses the “Pulse” switch and let it operates for a few seconds and then empty the glass jar.
2. Unplug the appliance. Cleaning should only be carried out when the appliance is switched off and the plug is removed from the wall outlet.

NOTE: After the blending process, wash the removable parts immediately. Do not let the food or any other liquids dry on the jar assemble as this will make the cleaning difficult and residue accumulated may harden or degrade the sealing rings as time passes.

3. Remove the glass jar from the motor base by turning the glass jar clockwise. After that, remove the seal ring (blade unit) (figure 8).
4. Hold the jar handle and then remove the jar cover from the glass blender. Then, remove the measuring cup for the jar cover (figure 9).
5. Wash the glass jar, blade unit and seal ring. Brush the blade with warm soupy water then rinse thoroughly under the tap. Beware of sharp blade and handle with care. Do not immerse the blade unit in water or any other liquids. Leave it dry upside down and away from children.
6. Wipe the motor base with a soft damp cloth and dry thoroughly. Remove the stubborn spots by rubbing with non-abrasive cleaner. If liquids spill on the motor base, first power off the appliance and remove the plug, wipe with a damp cloth and dry thoroughly.

CAUTION 1: Never immerse motor base in water or any other liquids nor rinse it under the tap. Use only a moist cloth to clean the motor base.

CAUTION 2: When blending hard fruit or vegetable or maximum level load, please use highest speed setting. If the speed is used too low, the motor will be damaged due to insufficient torque. When the motor speed is found to be too slow, you must immediately use a higher speed setting to blend or turn the speed selector to “0” to stop blend.



ENVIRONMENT-FRIENDLY DISPOSAL



You can help to protect the environment!

Please remember to respect the local regulations: hand in the non-working electrical equipments to an appropriate waste disposal centre.

ELBA