

# **FIRE** **ETC**

**EQUIPPING THE COURAGEOUS**

**SINCE 1979**



# **FIRE** **ETC**

**EQUIPPING THE COURAGEOUS**

**SINCE 1979**

**AFECO Inc. dba Fire ETC**

2190 Main Street

San Diego, CA 92113

(619) 525-7296

[www.Fire-etc.com](http://www.Fire-etc.com)

**FIRE-ETC is a complete source for fire, safety, uniforms, military equipment and related services.**

**Equipping The Courageous (ETC), it's not only our name, but also our Purpose. Our values are centered around YOU! FIRE-ETC's leadership team is made up of retired fire service professionals, retired Navy Special Operations service members, spouses of retired fire service and active-duty military professionals.**

**We strive to provide the best equipment and services to our customers. Whether that means providing requirement solutions to our military service members, fitting professionals in the latest PPE, uniform tailoring and alterations, outfitting firefighters in the latest and most innovative products or offering cleaning and educational services around the latest NFPA standards.**

**FIRE-ETC also takes pride in partnering with our local shipyards to provide services such as: certifying and deploying alternative fire suppression systems on ships, hose tree and fitting rentals, and hydrostatic hose testing.**

**We are a passionate, honest and hard-working team that is ready to assist you and help provide solutions! Contact or visit us and see how we can help address your fire protection or safety needs.**

## **Corporate Data**

### **Veteran-Owned Small Business**

- **CAGE Code:** 1K4U1
- **UEI:** CNFCT44W4LB8
- **Federal ID:** 95-3388879
- **Resale:** SR FH 25883854
- **CA TAX ID:** C0905973
  
- **NAICS CODE:** 423850, 441120



## **Core Competencies**

- **Navy Shipboard Consumables**
- **Navy Damage Control Equipment**
- **Navy PPE Uniforms** (FR or NAVAIR Approved)
- **SCBA** (Sales, Inspection & Repair)
- **Fire Extinguishers** (Inspection, Recharge, hydrostatic testing, repair, replacement, disposal or training)
- **Fire Hose** (testing, repair, rental, parts or replacement)
- **Temporary Fire Main Rentals**
- **Gas Detection Equipment**
- **Gauge Calibration**

## **Differentiators**

- 50+ years of fire and safety knowledge
- Veteran owned and operated
- Conveniently located Brick-and-Mortar
- Efficient online shopping experience
- Innovative technology
- Real, personalized customer service
- Access to 400+ industry leading suppliers

## **Past Performances**

- **Shipyards:** BAE, NASSCO, CMSD, HII, Austal
- **Contractors:** Epsilon, Southcoast Welding, ECR
- **US Navy & US Coast Guard**
- **CAL Fire**
- **US Forest Service**
- **Federal Fire**
- **California Municipality Fire Departments**
- **Reservation Fire Departments**
- **CA Conservation Corp**
- **California Law enforcement Agencies**

## Proud Distributor For:

5.11 TACTICAL  
BULWARK  
COLTRI COMPRESSORS  
HAIX USA  
MSA SAFETY  
REDKAP

AMEREX CORP  
CHANNELLOCK  
DANNER BOOTS  
INNOTEX  
NORTH AMERICAN FIRE HOSE  
SC PRODUCTS

BAUER COMPRESSORS  
CIRCUL-AIR CORP  
DRAEGER SAFETY  
INTERSPIRO  
PHENIX TECH  
WORKRITE

ACTION COUPLING  
ACTIVAR INC  
ADI GLOBAL  
AKRON BRASS  
ANCHOR INDUSTRIES  
ANSUL  
ATLANCO/TRUSPEC  
BAYCO PRODUCTS  
BLACK DIAMOND  
BROOKS EQUIPMENT  
C&S SUPPLY  
CATO INC  
CLOW VALVE CO  
CMC RESCUE  
COUNCIL TOOLS  
CREWBOSS  
DFND  
DIXON VALVE & COUPLING  
DRAGON FIRE  
DRIFIRE  
DUO SAFETY LADDER CORP  
ELKHART BRASS  
ENVIROSAFETY  
ESS EYEPRO  
EURAMCO SAFETY  
FEDERAL SIGNAL CORP  
FIREHOOKS UNLIMITED  
FIRE NINJA SAFETY EQUIP.  
FIRE-DEX  
FIRE MAUL  
FIRST IN PRODUCTS

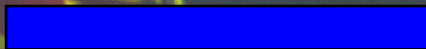
FLIR COMMERCIAL  
FLYING CROSS  
FOUNTAINHEAD  
FRONTLINE OPTICS  
GENLABS  
HALE PRODUCTS  
HEX ARMOR  
HH BROWN SHOE  
HONEYWELL  
JUSTRITE MFG  
KEYHOSE  
KINCO INTERNATIONAL  
KLEEN-TEX  
KMP ARS  
KOCHEK COMPANY  
KUSSMAUL ELECTRONICS  
LACROSSE FOOTWEAR  
LAKELAND INDUSTRIES  
LEATHERHEAD TOOLS  
LIBERTY CALL  
MAJESTIC FIRE APPAREL  
MECHANIX  
NATIONAL FOAM  
NIEDNER INC  
PAC MOUNT TOOLS  
PELICAN PRODUCTS  
PERIMETER SOLUTIONS  
PETZL  
PGI INC  
POTTER ROEMER  
PROHOE MANUFACTURING

PROPPER INTERNATIONAL  
REEBOK  
REDBACK USA  
REDHEAD BRASS  
REEVES NAMEPINS  
RESCUE 42 INC  
ROTHCO  
S&H PRODUCTS  
SANMAR  
SERVICE BRASS FITTINGS  
SHELBY SPECIALTY GLOVES  
STARFIRE INC  
STARK MANUFACTURING  
STREAMLIGHT  
SUNWARD FLAG  
TASK FORCE TIPS  
THE CORPS  
THE LAST DETAIL  
THERMO TECHNOLOGIES  
TIMBERLAND TOOLS  
TRUE NORTH GEAR  
TYCO FIRE PROTECTION  
VERIDIAN FIRE  
VOLCOM  
WAXIE  
WESCRAFT INC  
WHITE'S BOOTS  
WILD THINGS  
WOLFPACK GEAR  
WORKWEAR OUTFITTER  
ZIAMATIC CORP

**Don't see a brand you want? Contact your Sales Rep and we can get them added!**

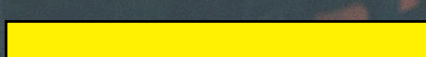
# TABLE OF CONTENTS

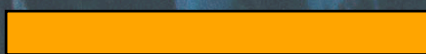
 **DAMAGE CONTROL / FIRE**

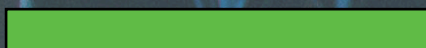
 **UNIFORMS**

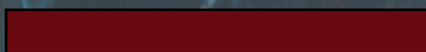
 **UNIFORM ACCESSORIES**

 **AVIATION / COMBAT**

 **CULINARY**

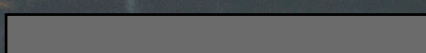
 **FOOTWEAR**

 **GLOVES**

 **FLASHLIGHTS**

 **GLASSES**

 **MISCELLANEOUS**

 **SHIPBOARD**

 **QUARTERDECK**





MODEL: CED2NV



Arc Rating ATPV 11 cal/cm<sup>2</sup>



FABRIC: EXCEL FR FLAME RESISTANT, 9 OZ (305 G/M<sup>2</sup>) TWILL

SIZING: SMALL - 4XL

LENGTH: SHORT, REGULAR, LONG or EXTRA-LONG

**Alpha/Numeric Conversion Chart — Mens Measurements**

	XS		S		M		L		XL		XXL		3XL		4XL	
Size	30	32	34	36	38	40	42	44	46	48	50	52	54	56	58	60
Chest	29½	31½	33½	35½	37½	39½	41½	43½	45½	47½	49½	51½	53½	55½	57½	59½
	↓	↓	↓	↓	↓	↓	↓	↓	↓	↓	↓	↓	↓	↓	↓	↓
	31	33	35	37	39	41	43	45	47	49	51	53	55	57	59	61
Waist Max	26½	28½	30½	32½	34½	36½	38¾	41	43¾	45½	47¾	50	52¾	54½	56¾	59

Height: Short: 5'3" -5'7" Regular: 5'7" -5'11" Long: 5'11" -6'3" X-Long: 6'3" -6'5"



MODEL: CEB2RD



Arc Rating ATPV 11 cal/cm<sup>2</sup>

FABRIC: EXCEL FR FLAME RESISTANT, 9 OZ (305 G/M<sup>2</sup>) TWILL

SIZING: 28-60

LENGTH: SHORT, REGULAR, LONG or EXTRA-LONG

\*\* FOR BOTH CED2 AND CEB2 MODELS:

NON-STANDARD SIZES ARE MADE-TO-ORDER AND CAN TAKE 4-6 WEEKS FROM THE MANUFACTURER.

**FIRE ETC HAS IN HOUSE TAILORING WHICH CAN DO ALTERATIONS AND SEW ON: NAMESTRIPS, COLLAR DEVICES, WARFARE DEVICES AND US NAVY STRIPS!**

# COMPLETE PROXIMITY SUIT

**\* ALL PROXIMITY GEAR IS AVAILABLE FOR PURCHASE VIA MILSTRIP! \***



**MORNING PRIDE**

by Honeywell



HELMET  
(SKU: 16991)

GOLD FACE SHIELD  
(SKU: 23169)

SHROUD  
(SKU: 17448)



JACKET  
(SKU: 19979)

PANT  
(SKU: 19974)



GLOVES (SHELBY)  
(SKU: 60996)



SUSPENDERS  
(SKU: 16630)



BOOTS (5050B)  
(SKU: 36563)

OR



BOOTS (BD 9451)  
(SKU: 17062)



# ANTI-FLASH FIREFIGHTING GEAR



ANTI-FLASH GLOVES  
(SKU: 39345)



PBI PAC IX - GOLD  
(SKU: 39347)



PBI PAC IX - GOLD/BLK  
(SKU: 16719)

- SHOULDERS COVERED FOR FULL PROTECTION
- NFPA 1971, UL CERTIFIED
- BERRY COMPLIANT



NGQ RK PAC IA-19  
(SKU: 38251)



RK PAC IX  
(SKU: 61016)

- NAVY GENERAL QUARTERS HOOD
- NOTCHED SHOULDER DESIGN
- NFPA 1971, UL CERTIFIED
- BERRY COMPLIANT

- SHOULDERS COVERED FOR FULL PROTECTION
- NFPA 1971, UL CERTIFIED
- BERRY COMPLIANT



## TRAINING FLAG KITS



THESE SHIPBOARD FLAG TRAINING SETS ARE EXCELLENT FOR TRAINING CREW MEMBERS IN DAMAGE CONTROL, SYSTEM COLOR-CODING, AND FEATURE ADVANCED DAMAGE CONTROL SOFTWARE SYSTEMS SYMBOLOGY.



**FIRE KIT**  
(SKU: 61050)

- STORAGE BAG
- 2 FIRE
- 2 ALPHA
- 2 BRAVO
- 1 CHARLIE
- 1 DELTA
- 2 BLACK SMOKE
- 2 WHITE SMOKE
- 1 HEAT TRANSFER
- SOUNDS OF DAMAGE CD

STROBE LIGHTS INCLUDED:

- RED, AMBER & BLUE



**MAIN SPACE KIT**  
(SKU: 61051)

- STORAGE BAG
- 2 FIRE
- 2 ALPHA
- 2 BRAVO
- 1 CHARLIE
- 2 BLACK SMOKE
- 1 HEAT TRANSFER
- 1 RUPTURE FO
- 1 RUPTURE LO
- 1 RUPTURE JP-5
- 1 RUPTURE FM
- 1 RUPTURE HM
- SOUNDS OF DAMAGE CD

STROBE LIGHTS INCLUDED:

- RED, AMBER & BLUE



**DC KIT**  
(SKU: 61052)

- STORAGE BAG
- 1 FLOODING
- 1 JAMMED HATCH
- 1 RUPTURE
- 1 RUPTURE LO
- 1 RUPTURE FO
- 1 RUPTURE JP-5
- 1 RUPTURE FM
- 1 RUPTURE AFFF
- 1 RUPTURE CW
- 1 RUPTURE ECW
- 1 RUPTURE HM
- 1 HOLE IN DECK
- 1 HOLE IN BKHD
- 1 HOLE IN OVHD
- 1 FRAG
- SOUNDS OF DAMAGE CD

STROBE LIGHTS INCLUDED:

- RED, AMBER & BLUE



**DC 2 KIT**  
(SKU: 61054)

- STORAGE BAG
- 1 ELECTRICAL DAMAGE
- 1 ELECTRICAL POWER LOST
- 1 COMMUNICATIONS LOST
- 1 MECHANICAL FAILURE
- 1 MECHANICAL DAMAGE
- 1 IMPACT
- 1 FRAGMENTATION
- 1 RUPTURE POTABLE WATER
- 1 RUPTURE STEAM
- 1 RUPTURE SALT WATER
- 1 RUPTURE PRESSURIZED AIR
- 1 UNCLASSIFIED SMOKE



**CBR-D LARGE**  
(SKU: 61055)

- STORAGE BAG
- 2 CHEMICAL HAZARD
- 2 BIOLOGICAL HAZARD
- 2 RADIATION HAZARD
- 2 UNEXPLODED ORDNANCE



**CBR-D SMALL**  
(SKU: 61056)

- STORAGE BAG
- 1 CHEMICAL HAZARD
- 1 BIOLOGICAL HAZARD
- 1 RADIATION HAZARD
- 1 UNEXPLODED ORDNANCE

## DAMAGE CONTROL BAGS

DAMAGE CONTROL BAGS PROVIDE A COMPREHENSIVE, COMPACT AND DURABLE AEL/REPAIR LOCKER ASSIGNMENT-DRIVEN STORAGE CONTAINER FOR ALL TOOLS, EQUIPMENT AND CONSUMABLES NECESSARY TO SUPPORT DAMAGE CONTROL REPAIR STATIONS (DCRS).

**\*\* ALL DAMAGE CONTROL BAGS ARE HEAVY DUTY, COLOR SPECIFIC STORAGE BAGS, WHICH ELIMINATES CONTENT CONFUSION.**

**\*\* 36 DIFFERENT TYPE OF DC BAGS AVAILABLE! ASK YOUR SALES REP FOR FULL LIST.**



STOWAGE POCKETS FOR HARD COPY AEL AND TECHNICAL INFORMATION

RETRO-REFLECTIVE FLUORESCENT LABELS ASSIST IN LOW LIGHT SITUATIONS

TRANSPARENT POCKET ALLOWS BAG TO BE CUSTOMIZED TO SPECIFIC DCRS LOCATION

BALLISTIC REINFORCED DOUBLE BOTTOMS

## SCBA COVERS



APPROX. 22.5"W X 30"H  
(SKU: 61053)

## SMOKE CURTAINS AND TENTS



- MADE IN ACCORDANCE WITH US NAVY STANDARDS
- BOTH STYLES COME IN STANDARD SIZES
- BOTH CAN BE MADE IN CUSTOM SIZES

**\*\* ASK YOUR SALES REP FOR PRICING**

## PORTABLE PLUGGING AND PATCHING KIT (P3K)

THE DAMAGE CONTROL PORTABLE PLUGGING AND PATCHING KIT (P3K) IS INTENDED FOR RAPID DEPLOYMENT FOR PATCHING AND PLUGGING ONBOARD MILITARY AND COMMERCIAL SHIPS. THE P3K IS DESIGNED TO HOLD THE MOST COMMON ITEMS NEEDED TO QUICKLY RESPOND TO FLOODING DUE TO PIPING RAPTURE, HULL OR BULKHEAD BREACH.



- CONSTRUCTED OF DURABLE DUPONT CORDURA MATERIAL
- POCKETS AND VELCRO STRAPS TO HOLD THE CONTENTS IN PLACE DURING STORAGE AND TRANSPORT
- POCKETS FOR SHARP ITEMS ARE FITTED WITH HEAVY DUTY PLASTIC SHIELDS TO PREVENT INJURY TO PERSONNEL
- MULTIPLE EXTERIOR STRAPS TO ALLOW FOR STORAGE AND WHILE IN USE
- EACH BAG IS LABELED WITH RETRO-REFLECTIVE LETTERING
- **P3K IS AVAILABLE FOR PURCHASE WITH OR WITHOUT TOOLS**

WITH TOOLS:      WITHOUT TOOLS:  
(SKU: 61624)      (SKU: 61625)

### P3K DESIGNED TO HOLD:

- 1 SABRE LITE FLASHLIGHT
- 6 HACKSAW BLADES
- 1 CAULKING IRON
- 1 WOOD CHISEL
- 1 BLACKSMITH COLD CHISEL
- 1 HACKSAW FRAME
- 1 PAIR FIREFIGHTER GLOVES (LARGE)
- 1 HATCHET
- 1 BALL PEEN HAMMER
- 1 HAND SAW
- 1 PAIR SHEARS
- 2 JUBILEE PATCHES
- 1 LBS MARLIN BALL
- 9FT OAKUM
- 2 WOOD PLUGS (1" X 0" X 3")
- 2 WOOD PLUGS (2" X 0" X 4")
- 2 WOOD PLUGS (3" X 0" X 8")
- 2 WOOD PLUGS (5" X 1" X 10")
- 1 RUBBER SHEET (36" X 36" X 1/8")
- 1 PIPE WRAP REPAIR KIT
- 2 WOOD WEDGES (2" X 2" X 8")
- 2 WOOD WEDGES (2" X 4" X 8")
- 2 WOOD WEDGES (3" X 3" X 12')
- 2 WOOD WEDGES (3" X 6" X 12')
- 6 COTTON RAGS
- 1 COMBINATION WRENCH

## SCBA STOWAGE CABINETS

- SCBA STOWAGE CABINETS PROVIDE A VIABLE SOLUTION FOR THE STOWAGE OF SCBA UNITS AND/OR AIR SUPPLY TANKS OFFERING INCREASED SURVIVABILITY AND ACCESS TO EQUIPMENT FOR RAPID RESPONSE TO CASUALTIES.
- SCBA CABINETS ARE MANUFACTURED IN ACCORDANCE WITH NAVSEA DRAWINGS AND SPECIFICATIONS AND COMPLY WITH GRADE "B" SHOCK REQUIREMENTS.
- THE CABINETS ARE MANUFACTURED FROM AN ALUMINUM ALLOY .08 INCHES THICK FOR STRENGTH AND DURABILITY.
- SCBA CABINETS ARE POWDER COATED BRIGHT RED TO ENSURE RAPID IDENTIFICATION FOR CASUALTY RESPONSE.



OVERBOARD DISCHARGE WITH PIPE



OVERBOARD DISCHARGE WITH 94 SERIES ADAPTER



3/4" TEST CAP FITTINGS



ADJUSTABLE NAVY SPANNER WRENCH



STANDARD NAVY SPANNER WRENCH

# SELF CONTAINED BREATHING APPARATUSES



\* INDUSTRIAL USE

PAS LITE  
(SKU: 61118)



PSS 3000  
(SKU: 61119)



\* NFPA CERTIFIED

PSS 5000  
(SKU: 61120)



\* NFPA CERTIFIED

PSS 7000  
(SKU: 61121)

## Dräger. Technology for Life®



TSI SIDEPAK: PERSONAL AEROSOL DETECTOR

CHARGING CASE

FIRSTNET CELLULAR CAPABILITIES: PRIORITY ON THE ETWORK FOR HIGHEST LEVEL OF CONNECTIVITY.

SMARTLINC: FOR RECEIVING READINGS FROM GAS, RADIATION AND AEROSAL DETECTORS VIA BLUETOOTH CONNECTION.

X-AM 8000: REMOVABLE FROM KIT TO ALLOW MEASUREMENT UP TO SEVEN GASES FOR AREA SURVEY, CONFINED SPACE, OR PERSONAL MONITORING.

MIRION ACCURAD PRD: PERSONAL GAMMA RADIATION DETECTOR



X SITE LIVE  
(SKU: 61116)

## GAS DETECTION



### DETECTION TUBES

- SHORT-TERM TUBES FOR SPOT MEASUREMENTS FOR MORE THAN 500 DIFFERENT GASES
- MEASURING COMPLEX COMPOUNDS AND MIXTURE OF SUBSTANCES

**\*\* ASK YOUR SALES REP FOR PRICING**



### ACCURO (SKU: 61117)

- FOR SPOT MEASUREMENTS WITH A LIMITED NUMBER OF STROKES
- INTEGRATED STROKE COUNTER FOR SAFE CONTROL
- EASY TO OPERATE WITH ONE HAND
- CAN BE USED IN EXPLOSIVE AREAS



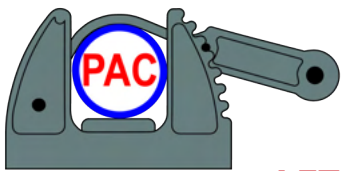
### X-ACT 7000 (SKU: 61114)

- PRECISE GAS MEASUREMENTS IN THE LOWER PPB RANGE
- BASED ON COLORIMETRIC CHEMICAL SENSOR TECHNOLOGY
- ALL CALIBRATION INFORMATION ON THE RFID



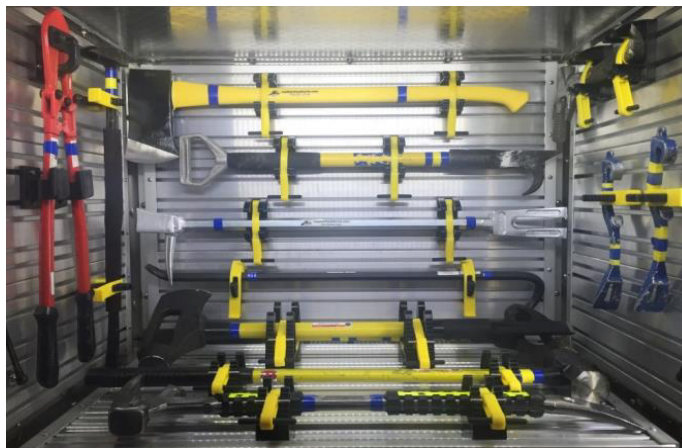
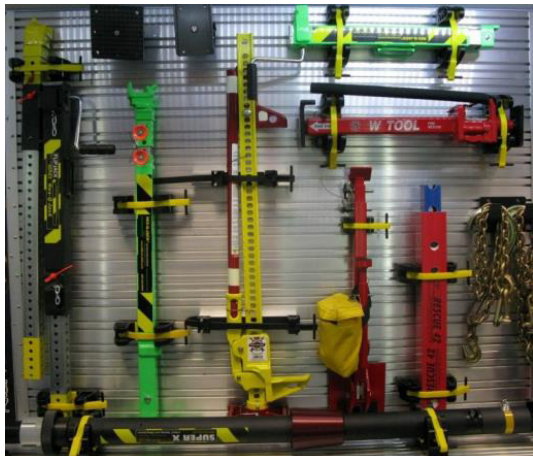
### X-ACT 5000 (SKU: 61115)

- IDEAL FOR A HIGH NUMBER OF STROKES
- CAN BE USED IN EXPLOSIVE AREAS
- HIGHLY VISIBLE END OF MEASUREMENT INDICATOR



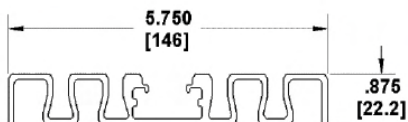
# TOOL MOUNTING SOLUTIONS

**NEED TO ORGANIZE YOUR REPAIR LOCKERS?  
LET US HELP YOU BUILD A CUSTOM TOOL MOUNT SOLUTION!**



## TOOL MOUNT BOARDS

### DUAL TRAC 7020



Z-Mount Kits available separately



Series Z70 PAC Trac

Series Z72 Dual Trac

Series Z75 Mini Dual



\*\* MULTIPLE SIZES AVAILABLE TO FIT ANY SPACE

\*\* CONTACT YOUR SALES REP FOR A SPACE EVALUATION!

## TOOL LOCKS



**TOOLOK 1003-HD**  
(SKU: 61087)



**HANDLELOK 1004**  
(SKU: 61508)



**JUMBOLOK 1070**  
(SKU: 61509)

- GRIPS 1/8" TO 1-1/2"
- SMALL DIAMETER ITEMS
- ECONOMICAL VERSION OF HANDLELOK

- GRIPS 1/8" TO 1-3/4"
- PERFECT FOR AXES, HAMMERS AND BARS

- GRIPS 1/8" TO 31/4"
- 4 STRAP PIVOT MOUNTING POSITIONS

## FLEXIBLE BRACKETS



**FLEXMOUNT 1002-HD**  
(SKU: 61512)

- GRIPS 1-1/2" TO 2-3/8"
- SITS 4-1/16" AWAY FROM SURFACE
- FOR NOZZLES & LARGE DIAMETER POLES



**STOW-N-LOK 1005**  
(SKU: 61510)

- GRIPS 1" TO 1-1/2"
- SITS 4-1/2" AWAY FROM SURFACE
- STANDARD POLE SIZE



**COIL-LOK 1021**  
(SKU: 61513)

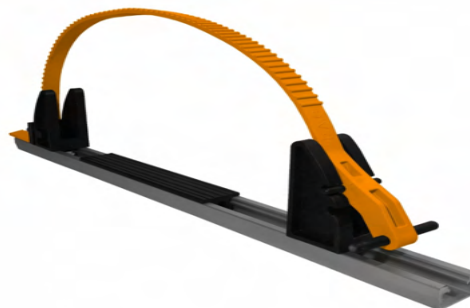
- GRIPS 3-1/2" TO 5-1/2"
- FOR HOSES, EXTENSION CORDS, CHAINS OR CABLES

## ADJUSTABLE STRUT-BASED BRACKETS



**ADJUSTAMOUNT K5006**  
(SKU: 61514)

- MIN GRIP OF HEIGHT: 1-7/8"
- 28" OF USEABLE STRAP
- DESIGNED FOR WIDER, LOWER PROFILE EQUIPMENT
- ACCOMMODATES 9" WIDTH



**SUPER ADJUSTAMOUNT K5060**  
(SKU: 61515)

- MIN GRIP OF HEIGHT: 2-3/16"
- 28" OF USEABLE STRAP
- DESIGNED WITH TALLER ADJUSTABLE ENDS
- FRAMING AND SUPPORTING DEEPER EQUIPMENT (GAS CANS)

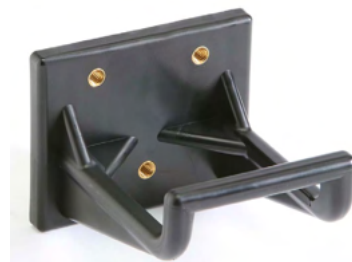
## STABILIZING BRACKETS



**TIE DOWN MOUNT KIT**  
**K3021**  
(SKU: 61516)



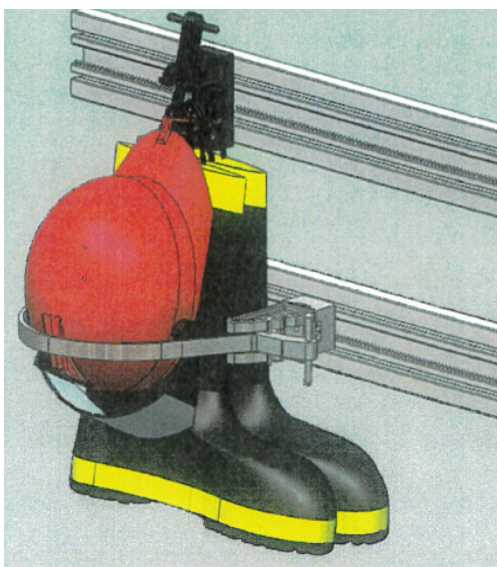
**UNIVERSAL HANGER 1019**  
(SKU: 61519)



**HOOK LOOP 1027**  
(SKU: 61520)



# TOOL SPECIFIC MOUNTING SYSTEMS



HELMET/BOOT MOUNT  
(SKU: 61084)



FLAT AXE MOUNT  
(SKU: 61085)



HALLIGAN MOUNT  
(SKU: 61081)



BOLT CUTTER MOUNT  
(SKU: 61657)



SHOVEL MOUNT  
(SKU: 61083)



## SCBA CYLINDER HOLDER

- STORE AND PROTECTS SCBA CYLINDERS
- HOLDS BOTTLES UP TO 25" IN LENGTH
- HIGH STRENGTH LOCKING STRAP
- NON-CONDUCTIVE
- PRESSURE CAN BE READ WHILE CONTAINED

**\*\* ASK YOUR SALES REP FOR PRICING**

**\*\* SPECIFIC MOUNTS AVAILABLE FOR HEAVY RESCUE TOOLS!**

## FIRE EXTINGUISHERS



ABC FIRE EXTINGUISHERS

- 2.5 LBS, 5 LBS, 10 LBS OR 20 LBS
- BRAND NEW, IN STOCK READY FOR PICK UP!
- RECHARGE SERVICES AVAILABLE
- DISPOSAL SERVICES AVAILABLE
- DIFFERENT BRACKETS AVAILABLE



CO2 EXTINGUISHERS

- 5 LBS, 10 LBS, 15 LBS OR 20 LBS
- BRAND NEW, IN STOCK READY FOR PICK UP!
- RECHARGE SERVICES AVAILABLE
- DISPOSAL SERVICES AVAILABLE
- DIFFERENT BRACKETS AVAILABLE



WET CHEMICAL - K CLASS EXTINGUISHERS



150 LBS WHEEL HALOTRON EXTINGUISHERS

**\*\* ASK YOUR SALES REP FOR PRICING**



## MILSPEC FIRE HOSE

- MEETS AND EXCEEDS ALL SPECIFICATIONS FOR MIL-H-24606B
- EPDM RUBBER LINING / POLYESTER DOUBLE JACKET
- ALSO AVAILABLE WITH POLYURETHANE (TPU) LINING
- ACCEPTANCE TEST PSI: 600 PSI
- SERVICE TEST PSI: 300 PSI
- HOSE SIZES AVAILABLE: 1.5", 1.75" OR 2.5"
- AVAILABLE IN 25 FT OR 50 FT LENGTHS

**\*\* ASK YOUR SALES REP FOR PRICING**



505 SHORT SLEEVE  
(SKU: 61091)



505 LONG SLEEVE  
(SKU: 61092)

### 505 FR ADVANCED SHIRT

- ULTRA-LIGHTWEIGHT 4.5 OZ KNIT
- SOFT FR FABRIC
- DROPPED, FLATLOCK SEAM
- RIBBED COLLAR
- INHERENT AND PERMANENT FLAME RESISTANCE
- DRIES UP TO 3 TIMES FASTER THAN COTTON



606 SHORT SLEEVE  
(SKU: 60596)



606 LONG SLEEVE  
(SKU: 60598)

### 606 FR ELITE SHIRT

- 5.5 OZ FR CONTROL 2.0 FABRIC
- PERFORMANE FIT, SOFT FR FABRIC
- PROACTIVELY REGULATES SKIN TEMP (=/- 3 DEGREES)
- DROPPED, FLATLOCK SEAM
- INHERENT AND PERMANENT FLAME RESISTANCE

**\*\* ALL SHIRTS AVAILABLE IN COYOTE BROWN, TAN 499 OR BLACK**



FR FLIGHT DECK PANT  
(SKU: 61093)



FR FLIGHT DECK (COMFORT FIT) PANT  
(SKU: 61094)

**\*\* BOTH STYLE OF PANTS ARE AVAILABLE IN NAVY BLUE OR KHAKI**



**STRYKE PANTS**



TDU GREEN  
(SKU: 61096)



KHAKI  
(SKU: 61097)



NAVY BLUE  
(SKU: 61098)



**UNIFORM TACTICAL PANTS**



TDU GREEN  
(SKU: 61102)



KHAKI  
(SKU: 61103)



NAVY BLUE  
(SKU: 61101)



**ORIGINAL TACTICAL PANTS**



KHAKI  
(SKU: 61107)



NAVY BLUE  
(SKU: 61106)



**TDU GREEN**  
(SKU: 61100)



**KHAKI**  
(SKU: 61099)



**APEX SHORTS**

- 67/33 POLY/COTTON CANVAS
- 6.4 OUNCE TEFLON FINISH
- 11" INSEAM
- 10 TOTAL POCKETS
- GUSSETED CONSTRUCTION
- SEVEN REINFORCED BELT LOOPS



**OD GREEN**  
(SKU: 61104)



**KHAKI**  
(SKU: 61105)



**BDU SHORTS**

- 65/35 POLY/COTTON RIPSTOP
- ADJUSTABLE WAIST TABS
- FELLED SEAMS FOR DURABILITY
- 6 POCKET DESIGN
- DRAIN HOLES IN BELLOWED POCKETS



**OD GREEN**  
(SKU: 61108)



**KHAKI**  
(SKU: 61109)



**TACTICAL SHORTS**

- 65/35 POLY/COTTON RIPSTOP
- 6.5 OUNCES
- 9" INSEAM
- DWR WATER REPELLENT COATING
- 8 POCKETS

# UNIFORM PATCHES



TYPE III GADSDEN PATCH  
(SKU: 61004)



TYPE III REVERSE USA PATCH  
(SKU: 61003)



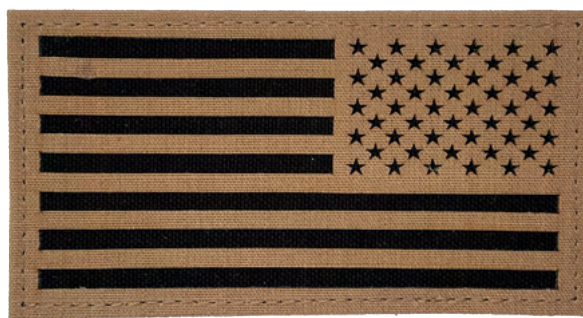
2POC GADSDEN PATCH - NAVY  
(SKU: 60995)



2POC REVERSE USA PATCH - NAVY  
(SKU: 60994)



2POC GADSDEN PATCH - KHAKI  
(SKU: 60993)



2POC REVERSE USA PATCH - KHAKI  
(SKU: 60992)



COMMAND ROCKERS  
(SKU: 61505)



COMMAND NAME PATCHES  
(SKU: 60563)



COMMAND SHOULDER PATCHES  
(SKU: 61504)

### CUSTOM BALL CAPS



TRAINING TEAM BALL CAPS  
(SKU: 61507)

- ALL TRAINING COLORS AVAILABLE
- SCRAMBLED EGGS AVAILABLE
- CAN DO BACK OR SIDE GRAPHICS



COMMAND BALL CAPS - TAN 499  
(SKU: 61506)

- VELCRO BACK
- SCRAMBLED EGGS AVAILABLE
- NAVY APPROVED TAN 499 COLOR



# FLIGHT SUITS



**MALE**  
(JACKET - SKU: 60698)  
(PANT - SKU: 60701)

2-PIECE FLIGHT SUIT



**FEMALE**  
(JACKET - SKU: 60710)  
(PANT - SKU: 60711)



**UNISEX**  
(SKU: 61525)

1-PIECE FLIGHT SUIT

# FLIGHT DECK UNIFORMS

NAVAIR APPROVED



FR FLIGHT DECK PANT  
(SKU: 61093)



FR FLIGHT DECK PANT  
(COMFORT FIT)  
(SKU: 61094)

\*\* BOTH STYLE OF PANTS ARE AVAILABLE IN NAVY BLUE OR KHAKI





## NAVAIR APPROVED COMBAT SHIRTS



FORTREX FR COMBAT SHIRT  
(SKU: 65129)



FORTREX FR COMBAT SHIRT  
(SKU: 61530)

## DRIFIRE FORTREX COMBAT SET



V2 COMBAT SHIRT  
(SKU: 61531)



V2 COMBAT PANT  
(SKU: 61532)

**\*\* TOP AND BOTTOM ARE AVAILABLE IN MULTICAM AND OCP (MTO)**

## DRIFIRE/CRYE COMBAT SET



V1 COMBAT SHIRT  
(SKU: 61533)



V1 COMBAT PANT  
(SKU: 61534)



V2 COMBAT SHIRT  
(SKU: 61535)



V2 COMBAT PANT  
(SKU: 61536)

**\*\* V1 AVAILABLE IN NWU III**

**\*\* V2 AVAILABLE IN OCP (MTO) OR MULTICAM (MTO)**

# CHEF COATS



MALE - CHARCOAL  
(SKU: 61626)



FEMALE - GREY  
(SKU: 61627)

- **FABRIC:** 4.25 OZ RIPSTOP
- 65/35 POLY/COTTON
- FLEX STRETCH PANELS
- BREATHABLE COMFORT, LASTING COLOR, STAIN RESISTANT
- INDUSTRIAL LAUNDRY FRIENDLY

COLORS: 

(BLACK, CHARCOAL, GREY, WHITE OR RED)




MALE - MERLOT  
(SKU: 61628)



FEMALE - TEAL  
(SKU: 61629)

- **BODY FABRIC:** 4.25 OZ POPLIN, 65/35 POLY/COTTON
- **FLEX PANELS:** 4.2 OZ PERFORMANCE MESH, 100% POLYESTER
- BREATHABLE COMFORT, LASTING COLOR, STAIN RESISTANT
- INDUSTRIAL LAUNDRY FRIENDLY

**\*\* FR VERSION AVAILABLE IN BLACK OR KHAKI!**

COLORS: 

(BLACK, CHARCOAL HEATHER W/ CHARCOAL MESH, MERLOT W/ BLACK MESH, TEAL, WHITE W/ GREY MESH)



**LIGHTWEIGHT MESH BACK AND UNDERARM PANELS KEEPS YOU COOL AND ENHANCES MOBILITY!**

## CUSTOMIZATION

EMBROIDERY OR SCREEN PRINTING AVAILABLE!



LEFT SHOULDER:  
CS INSIGNIA



LEFT CHEST:  
COMMAND CREST OR RANK/NAME



RIGHT SHOULDER:  
INVERTED AMERICAN FLAG

# WORK SHIRTS



MALE - CHARCOAL  
(SKU: 61630)



FEMALE - MERLOT  
(SKU: 61631)



- **BODY FABRIC:** 4.25 OZ POPLIN, 65/35 POLY/COTTON
- **FLEX PANELS:** 4.2 OZ PERFORMANCE MESH, 100% POLYESTER
- CHEST & DUAL SLEEVE POCKETS
- HIDDEN SNAP CLOSURES FOR A POLISHED LOOK
- BREATHABLE COMFORT, LASTING COLOR, STAIN RESISTANT
- INDUSTRIAL LAUNDRY FRIENDLY

COLORS:

(BLACK, CHARCOAL HEATHER W/ CHARCOAL MESH, MERLOT W/ BLACK MESH, TEAL, WHITE W/ GREY MESH)

LIGHTWEIGHT MESH BACK AND UNDERARM PANELS  
KEEPS YOU COOL AND ENHANCES MOBILITY!

# CHEF PANTS



FEMALE - STRAIGHT AIRFLOW  
(SKU: 61632)



MALE - STRAIGHT AIRFLOW  
(SKU: 61634)



MALE - BAGGY AIRFLOW  
(SKU: 61633)

- **BODY FABRIC:** 5.75OZ PLAIN WEAVE, 77/23 POLY/COTTON
- **STRETCH PANELS:** 3.5OZ STRETCH WOVEN, 100% POLY
- CELL PHONE POCKET ON RIGHT LEG
- PERFORATED STRETCH PANELS IN BACK RISER AND INSEAM
- 2.5IN ELASTIC WAISTBAND, NO DRAWSTRING

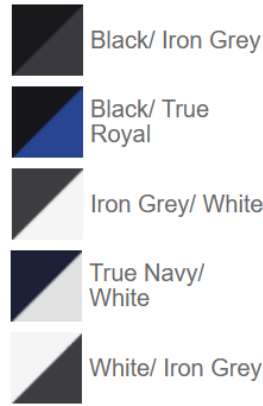
- **BODY FABRIC:** 5.75OZ PLAIN WEAVE, 77/23 POLY/COTTON
- **STRETCH PANELS:** 3.5OZ STRETCH WOVEN, 100% POLY
- CELL PHONE POCKET ON RIGHT LEG
- PERFORATED STRETCH PANELS IN BACK RISER AND INSEAM
- ELASTIC WAISTBAND WITH DRAWSTRING

- **BODY FABRIC:** 5.75OZ PLAIN WEAVE, 77/23 POLY/COTTON
- **STRETCH PANELS:** 3.5OZ STRETCH WOVEN, 100% POLY
- 6 POCKETS
- PERFORATED STRETCH PANELS IN BACK RISER AND INSEAM
- ELASTIC WAISTBAND WITH DRAWSTRING & ZIP FLY

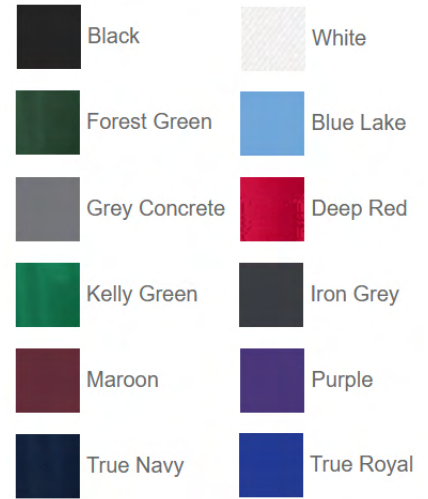
## POLOS



POLOS WITH PIPING



POLOS W/O PIPING



**\*\* ASK YOUR SALES REP FOR PRICING**

## FOOTWEAR



REDBACK -EASY ESCAPE (STEEL TOE)  
(SKU: 38410)

- 100% FULL GRAIN LEATHER
- ANATOMIC SUPPORT
- SLIP RESISTANT SOLES
- SHOCK ABSORBING MIDSOLES



TERRA - MURPHY BOOT (COMP. TOE)  
(SKU: 33157)

- 100% FULL GRAIN LEATHER
- MOISTURE WICKING & ABRASION RESISTANT
- CLEAN FEET ODOR CONTROL
- SLIP, HEAT AND ACID RESISTANT
- CSA GRADE 1 COMPOSITE TOE

## ACCESSORIES



PREMIUM BIB APRON  
(SKU: 60550)

- 24"W X 34" L
- TWO SECTION POCKET
- ADJUSTABLE NECK STRAP
- INDUSTRIAL LAUNDRY FRIENDLY



PREMIUM SHORT BIB APRON  
(SKU: 61635)

- 28"W X 24" L
- TWO SECTION POCKET
- ADJUSTABLE NECK STRAP
- INDUSTRIAL LAUNDRY FRIENDLY



SKULL CAP  
(SKU: 61636)

# MESS DECK



**LET US HELP YOU WITH YOUR MESS DECK BEAUTIFICATION PROJECT!**

CUSTOM FIT: WE WILL COME TO THE SHIP TO TAKE THE MEASUREMENTS

CUSTOM GRAPHICS: WE WILL DISCUSS ALL THE DESIGN POSSIBILITIES WITH YOU

CUSTOM COLORS: YOU CAN CHOOSE FROM A COLOR SWATCH OF 30+ COLORS

**CALL OR EMAIL TO SCHEDULE YOUR APPOINTMENT**

**MILITARYSALES@FIRE-ETC.COM  
(619) 525-7286**

**STRUCTURAL FIREFIGHTING BOOTS**

**Fire Dex**



RED LEATHER - FDXL200  
(SKU: 2243)

**Honeywell**



PRO SERIES BT5007  
(SKU: 29695)

**PROXIMITY FIREFIGHTING BOOTS**



**Honeywell**



- RUBBER W/ STEEL TOE
- 16" HEIGHT
- MEET OR EXCEEDS:
  - NFPA 1971-2018 EDITION
  - NFPA 1992-2018 LIQUID SPLASH
  - CSA Z195-92 PROTECTIVE FOOTWEAR

RUBBER BOOT 9451  
(SKU: 17026)



- LEATHER W/ STEEL TOE
- 14" HEIGHT
- MEET OR EXCEEDS:
  - NFPA 1971-2018 EDITION
  - NFPA 1992-2018 LIQUID SPLASH

PROX BOOT BT5050B  
(SKU: 30156)

**WILDLAND/DUTY BOOTS**



**Honeywell**



WILDLAND TACTICAL  
18050  
(SKU: 25060)



PRO SERIES WILDLAND  
BT3003  
(SKU: 16296)



MISSOULA 2.1  
(SKU: 3755)



AIRPOWER XR1  
(SKU: 27032)

### PULL ON BOOTS



**STREET SHIELD**  
(SKU: 61711)



**EASY ESCAPE ST - USBK**  
(SKU: 38410)



**MURPHY 6" - R4NSBK**  
(SKU: 33157)

### WORK BOOTS



**STEEL YARD 6" BROWN ST**  
(SKU: 10347)



**BULL RUN MOC TOE**  
(SKU: 7698)



**LOOKOUT SIDE ZIP**  
(SKU: 10319)

### TACTICAL BOOTS



**TACHYON 8" COYOTE**  
(SKU: 10371)



**RECKONING 8"**  
(SKU: 61609)



**RIVOT TFX - COMP TOE**  
(SKU: 61610)



TAA - THE ORIGINAL  
MG-F55 - COVERT  
(SKU: 61567)



TAA - THE ORIGINAL  
MG-78 - MULTICAM  
(SKU: 61576)



TAA - M-PACT  
MP-F72 COYOTE  
(SKU: 61572)



TAA - M-PACT  
MP-F55 COVERT  
(SKU: 61570)



TAA - M-PACT  
MPT-78 MULTICAM  
(SKU: 61577)



TAA - M-PACT 2  
MP2-F55 COVERT  
(SKU: 61568)



TAA - M-PACT 3  
MP3-F55 COVERT  
(SKU: 61569)



TAA - M-PACT  
SMP-FX72 COYOTE D4360  
(SKU: 61574)





TAA - SPECIALTY VENT  
MSV-F55 COVERT  
(SKU: 61573)



TAA - FASTFIT  
MFF-F55 COVERT  
(SKU: 61575)



MODEL 19  
(SKU: 29640)



X2  
(SKU: 23657)



5200 (WRISTLET)  
(SKU: 12000)



5200G (GAUNTLET)  
(SKU: 60763)



Better  
by Design.



ADVANCED COMBAT GLOVE  
ACG-II-100  
(SKU: 61587)



ADVANCED COMBAT GLOVE  
ACG-II-300  
(SKU: 61589)



TOUCHSCREEN SUMMER  
FLYER GLOVE - TSFG100  
(SKU: 61581)



TOUCHSCREEN SUMMER  
FLYER GLOVE - TSFG200  
(SKU: 61583)



TOUCHSCREEN SUMMER  
FLYER GLOVE - TSFG300  
(SKU: 61584)



COMPLETE DUTY GLOVE  
KLD100  
(SKU: 61580)



TACTICAL FAST ROPE GLOVE  
TFR100  
(SKU: 61586)



CRAFT HANDLER GLOVE  
CH100  
(SKU: 61579)



**POLYTAC 90X**  
(SKU: 88831)



**POLYTAC**  
(SKU: 88850)



**STINGER LED**  
(SKU: 7404)



**POLYTAC HELMET LIGHTING KIT**  
(SKU: 2486)



**SIDEWINDER BOOT**  
(SKU: 61592)



**SURVIVOR X**  
(SKU: 6937)



Hybrid  
CONCEPT®

ARIA 1

- WATERPROOF
- RED, GREEN AND BLUE LIGHTING
- STANDARD BATTERIES OR CORE RECHARGEABLE BATTERY
- 350 LUMENS



ARIA 2

- WATERPROOF
- RED, GREEN AND BLUE LIGHTING
- STANDARD BATTERIES OR CORE RECHARGEABLE BATTERY
- 450 LUMENS



2760 HEADLAMP  
(SKU: 61599)



2490 SPECIALTY LIGHT  
(SKU: 61598)



3715 RIGHT ANGLE LIGHT  
(SKU: 61606)



2760 RIGHT ANGLE LIGHT  
(SKU: 61599)



3610 LITTLE ED  
(SKU: 61605)



5000 FLASHLIGHT  
(SKU: 61604)



7060 TACTICAL FLASHLIGHT  
(SKU: 61600)



9460M REMOTE AREA LIGHT  
(SKU: 64315)



9455 REMOTE AREA LIGHT  
(SKU: 64316)



7600 TACTICAL FLASHLIGHT  
(SKU: 61603)

- 944 LUMENS
- SELECTABLE MODES
- TYPE III HARD ANODIZED FINISH
- 3 LED COLORS
- FULL TIME BATTERY LEVEL INDICATOR
- INGRESS PROTECTED IPX8 SUBMERSIBLE
- USB LITHIUM ION RECHARGEABLE



# GATORZ



MAGNUM - BLACK CERAKOTE  
(SKU: 64355)



SPECTER - BLACK CERAKOTE  
(SKU: 64356)



DELTA- BLACK CERAKOTE  
(SKU: 64359)

\* AVAILABLE LENS TYPE: POLAR, DIGITALLY OPTIMIZED POLAR (OPZ) OR BALLISTICS



BOXSTER (POLAR) - BLACK CERAKOTE  
(SKU: 64363)



SKYHOOK (OPZ) - BLACK CERAKOTE  
(SKU: 64360)

## BLASTSHIELD - BLACK CERAKOTE



BALLISTIC SMOKE & CLEAR BUNDLE  
(SKU: 64361)



BALLISTIC SHOOTING DAY  
& LOW LIGHT BUNDLE  
(SKU: 64362)

- QUICK AND EASY LENS CHANGES WITH INNOVATIVE CLAMP MECHANISM
- EXTREME COMFORT UNDER HELMETS OR EARS PROTECTION WITH ADJUSTABLE GHOST TEMPLES
- ANZI Z87+, ANTI-FOG COATING, AND SCRATCH RESISTANT COATING
- MILSPEC BALLISTIC RATED

\* ALSO AVAILABLE IN PHOTOCROMIC, CLEAR OR SMOKE LENS

### SMALL SIZE CASES



1300 PROTECTOR  
LxWxD: 10.70 x 9.76 x 6.89  
(SKU: 64322)



\* CONTENTS NOT INCLUDED

G5 PERSONAL UTILITY  
RF FIELD WALLET  
(SKU: 64323)



M50 MICRO  
LxWxD: 8.10 x 5.50 x 2.90  
(SKU: 64324)



\* CONTENTS NOT INCLUDED

R40 PERSONAL UTILITY RUCK  
LxWxD: 9.84 x 6.12 x 2.89  
(SKU: 64325)

### MEDIUM SIZE CASES



1510 PROTECTOR CARRY ON  
LxWxD: 22.00 x 13.81 x 9.00  
(SKU: 64318)



1510M PROTECTOR MOBILITY  
LxWxD: 23.55 x 14.36 x 10.62  
(SKU: 64319)



1550 PROTECTOR  
LxWxD: 20.66 x 17.20 x 8.40  
(SKU: 64321)

\* ALL DIMENSIONS PROVIDED ARE EXTERIOR IN INCHES (LENGTH x WIDTH x DEPTH)  
\* AVAILABLE WITH FOAM, WITHOUT FOAM, WITH TREKPAK DIVIDER KIT OR PADDED DIVIDER SET

## MEDIUM SIZE CASES



**1470 PROTECTOR LAPTOP**  
LxWxD: 16.88 x 13.23 x 4.47  
(SKU: 64326)



\* CONTENTS NOT INCLUDED

**1500 EMS CASE**  
LxWxD: 18.50 x 14.06 x 6.93  
(SKU: 64327)



**V250 VAULT AMMO**  
LxWxD: 16.27 x 7.90 x 11.93  
(SKU: 64328)



**V200 VAULT MEDIUM PISTOL**  
LxWxD: 15.41 x 13.08 x 6.16  
(SKU: 64329)



**V300C VAULT EQUIPMENT**  
LxWxD: 17.54 x 14.21 x 7.16  
(SKU: 64330)



**V300P VAULT 5 PISTOL GUN**  
LxWxD: 17.54 x 14.21 x 7.16  
(SKU: 64331)

## SPECIALIZED CASES



\* CONTENTS NOT INCLUDED

**1780RF PROTECTOR RIFLE**  
LxWxD: 44.90 x 25.32 x 16.50  
(SKU: 64344)



**1780HL PROTECTOR RIFLE**  
LxWxD: 44.90 x 25.32 x 16.50  
(SKU: 64346)

\* ALL DIMENSIONS PROVIDED ARE EXTERIOR IN INCHES (LENGTH x WIDTH x DEPTH)

\* AVAILABLE WITH FOAM, WITHOUT FOAM, WITH TREKPAK DIVIDER KIT OR PADDED DIVIDER SET



# LARGE SIZE CASES



1615 AIR  
LxWxD: 32.58 x 18.40 x 11.02  
(SKU: 64317)



\* CONTENTS NOT INCLUDED

1615TRVL AIR TRAVEL  
LxWxD: 32.58 x 18.40 x 11.02  
(SKU: 64341)



1626 AIR  
LxWxD: 31.12 x 17.05 x 13.33  
(SKU: 64342)



1630 PROTECTOR TRANSPORT  
LxWxD: 31.28 x 24.21 x 15.50  
(SKU: 64343)



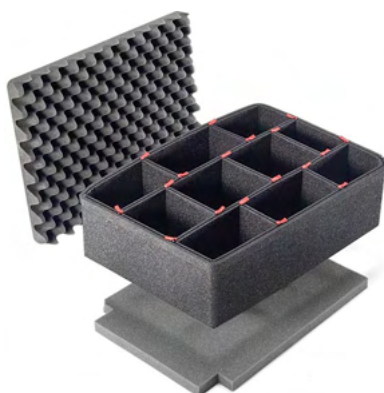
\* CONTENTS NOT INCLUDED

1650 PROTECTOR  
LxWxD: 31.59 x 20.47 x 12.45  
(SKU: 64345)

# ACCESSORY TYPES



REPLACEMENT  
PICK-N-PLUCK FOAM



TREMPAK DIVIDER KIT



EZ-CLICK MOLLE PANEL

\* ALL DIMENSIONS PROVIDED ARE EXTERIOR IN INCHES (LENGTH x WIDTH x DEPTH)

\* AVAILABLE WITH FOAM, WITHOUT FOAM, WITH TREMPAK DIVIDER KIT OR PADDED DIVIDER SET

# GARMIN®

## AUTHORIZED DEALER



**INSTINCT 2 SOLAR  
TACTICAL - BLACK**  
(SKU: 64369)

- NIGHT VISION COMPATIBILITY
- STEALTH MODE DISABLES GPS POSITION AND WIRELESS CONNECTIVITY
- DUAL-FORMAT GPS COORDINATES W/ LATITUDE & LONGITUDE
- IF SECURITY BECOMES AN ISSUE, THE KILL SWITCH WILL WIPE THE DEVICE OF ALL USER MEMORY
- JUMPMaster MODE: CALCULATES HIGH ALTITUDE RELEASE POINTS
- SOLAR CHARGING CAPABILITY
- MULTI-GNSS SUPPORT
- ABC SENSOR
- TRACBACK ROUTING FEATURE
- WATER RATING: 10ATM
- CASE MATERIAL: FIBER-REINFORCED POLYMER
- LENS MATERIAL: POWER GLASS



**FENIX 7X SAPPHIRE  
SOLAR BLACK**  
(SKU: 64370)

- OUTDOOR MAPS+ - SATELLITE IMAGERY AND ENHANCED TOPO MAPS
- MULTI-BAND GNSS WITH SATIQ TECHNOLOGY
- NEXTFORK MAP GUIDE FOR TRAILS
- ABC SENSORS
- MULTICONTINENT TOPO MAPS
- HYDRATION TRACKER
- PULSE OX SENSOR
- SOLAR CHARGING CAPABILITY
- WATER RATING: 10ATM
- CASE MATERIAL: FIBER-REINFORCED POLYMER W/ TITANIUM REAR COVER
- LENS MATERIAL: POWER SAPPHIRE



**TACTIX 7 PRO  
BLACK**  
(SKU: 64371)

- NIGHT VISION COMPATIBILITY
- STEALTH MODE DISABLES GPS POSITION AND WIRELESS CONNECTIVITY
- DUAL-FORMAT GPS COORDINATES W/ LATITUDE & LONGITUDE
- IF SECURITY BECOMES AN ISSUE, THE KILL SWITCH WILL WIPE THE DEVICE OF ALL USER MEMORY
- JUMPMaster MODE: CALCULATES HIGH ALTITUDE RELEASE POINTS
- SOLAR CHARGING CAPABILITY
- BUILT IN GREEN OR WHITE FLASHLIGHT
- PROJECTED WAYPOINTS, SATELLITE NAVIGATION & IMAGERY TOPO MAPS
- ABC SENSORS
- MULTI-BAND GNSS WITH SATIQ TECHNOLOGY
- WATER RATING: 10ATM
- CASE MATERIAL: FIBER-REINFORCED POLYMER WITH TITANIUM COVER
- LENS MATERIAL: POWER SAPPHIRE

## DIVING COMPUTERS



DESCENT G1 SOLAR  
(SKU: 64372)

- MULTIPLE DIVE MODES FOR SINGLE AND MULTIPLE GAS DIVES (INCLUDING NITROX AND TRIMIX)
- SURFACE MULTI-GNSS
- DIVE LOG TO STORE AND REVIEW DATA FOR UP TO 200 DIVES
- CUSTOMIZABLE DIVE MODES
- PAIR WITH INREACH SATELLITE COMMUNICATORS
- BUILT IN 3-AXIS COMPASS
- TIDE DATA
- SURFLINE CONDITIONS: TIDE, WAVE HEIGHT, WIND AND SURF RATING
- SOLAR CHARGING
- WATER RATING: 100 METERS
- LENS MATERIAL: POWER SAPPHIRE
- CASE MATERIAL: FIBER-REINFORCED POLYMER



DESCENT MK3I  
(SKU: 64373)

- SURFACE MULTI-GNSS
- DIVE LOG TO STORE AND REVIEW DATA FOR UP TO 200 DIVES
- CUSTOMIZABLE DIVE MODES
- PAIR WITH INREACH SATELLITE COMMUNICATORS
- BUILT IN 3-AXIS COMPASS
- AIR INTEGRATION: PAIR WITH DESCENT T2 TRANSCEIVER
- SUBWAVE SONAR NETWORKING
- MULTIPLE DIVE MODES FOR SINGLE AND MULTIPLE GAS DIVES (INCLUDING NITROX AND TRIMIX)
- DIVE READINESS TOOL
- DIVEVIEW MAPS: COLOR MAPS ON YOUR WRIST OFFER BATHYMETRIC DEPTH CONTOUR
- BRIGHT 1.4" AMOLED COLOR DISPLAY
- LEAKPROOF METAL INDUCTIVE BUTTONS
- SOLAR CHARGING
- WATER RATING: 200 METERS
- LENS MATERIAL: SAPPHIRE CRYSTAL
- CASE MATERIAL: FIBER-REINFORCED POLYMER W/ TITANIUM REAR COVER



DESCENT T1 TRANSMITTER  
(SKU: 64374)

- EVERY BREATH, EVERY TANK, EVERY BUDDY ON YOUR DIVE - TRACK THEM ALL ON YOUR WRIST
- ENHANCED SUBWAVE SONAR TECH LETS YOU MONITOR UP TO 5 TANKS WHEN UNDER WATER
- BATTERY LIFE: UP TO 100 HOURS
- THREAD TYPE: 7/16" (20 UNF)
- WATER RATING: 110 METERS



DESCENT T2 TRANSCEIVER  
(SKU: 64375)

- EVERY BREATH, EVERY TANK, EVERY BUDDY ON YOUR DIVE - TRACK THEM ALL ON YOUR WRIST
- ENHANCED SUBWAVE SONAR TECH LETS YOU MONITOR UP TO 8 TANKS WHEN UNDER WATER
- BATTERY LIFE: UP TO 100 HOURS
- THREAD TYPE: 7/16" (20 UNF)
- WATER RATING: 200 METERS

## HEART RATE MONITOR



- TRANSMITS REAL TIME HEART RATE DATA TO COMPATIBLE DEVICES AND EQUIPMENT
- TOOL-FREE BATTERY DOOR
- 1 YEAR BATTERY LIFE
- WITHOUT WATCH: HRM PRO PLUS CAPTURES STEPS, CALORIES BURNED, INTENSITY MINUTES AND MORE
- WATER RATING: 5 ATM
- BATTERY TYPE: CR2032

HRM PRO PLUS  
(SKU: 64376)

## HANDHELD GPS



INREACH MINI 2  
(SKU: 64377)

- TWO WAY MESSAGING
- INTERACTIVE SOS ALERTS
- LOCATION SHARING
- GLOBAL SATELLITE NETWORK
- FLEXIBLE SATELLITE AIRTIME PLANS
- COMPACT, RUGGED DESIGN: MIL-STD-810
- WATER-RATED TO IPX7
- TRACBACK ROUTING FEATURE CAN NAVIGATE YOU BACK TO YOUR STARTING POINT
- DIGITAL COMPASS
- BATTERY LIFE: 14 DAY USE
- INREACH WEATHER FORECAST SERVICE
- UNLIMITED CLOUD STORAGE AND TRIP PLANNING



GPSMAP 67i  
(SKU: 64382)

- MULTI-BAND GLOBAL NAVIGATION SATELLITE SYSTEMS SUPPORT
- ABC SENSORS: ALTIMETER, BAROMETER AND 3-AXIS ELECTRONIC COMPASS
- SATELLITE IMAGERY
- PRELOADED TOPO MAPS FOR US, MEXICO AND CANADA
- BATTERY LIFE: 425 HOURS IN EXPEDITION MODE
- TWO WAY MESSAGING
- INTERACTIVE SOS ALERTS
- LOCATION SHARING
- 100% GLOBAL IRIDIUM SATELLITE NETWORK
- GARMIN MESSENGER APP
- GARMIN EXPLORE APP
- OPTIONAL INREACH WEATHER
- ACTIVE WEATHER
- MIL-STD-810 FOR THERMAL, SHOCK AND WATER PERFORMANCE
- COMPATIBLE WITH NIGHT VISION GOGGLES
- LED FLASHLIGHT

## TACTICAL GPS



FORETREX 801  
(SKU: 64383)

- BATTERY IN NAVIGATION MODE: 100 HOURS
- BATTERY IN EXPEDITION MODE: 1000 HOURS
- BATTERIES USED: AAA (NOT INCLUDED)
- MULTI-BAND GNSS
- TESTED TO MIL-STD-810 TO WITHSTAND: SAND, DUST, VIBRATION, SHOCK, TEMPERATURE, ALTITUDE, HUMIDITY AND MORE
- IPX7 WATER-RESISTANCE RATING
- STEALTH MODE: DISABLES WIRELESS CONNECTIVITY
- KILL SWITCH: TO ERASE DEVICE MEMORY
- JUMPMaster MODE: TO CALCULATE HIGH-ALTITUDE RELEASE POINTS
- IMPROVED MONOCHROMATIC SCREEN, COMPATIBLE WITH NIGHT VISION GOGGLES
- NAVIGATION SENSORS: 3-AXIS ACCELEROMETER, 3-AXIS COMPASS & BAROMETRIC ALTIMETER
- COMPATIBLE WITH INREACH SATELLITE COMMUNICATOR



FORETREX 901  
(SKU: 64384)

- INCLUDES APPLIED BALLISTICS SOLVER FOR PRECISE LONG-RANGE ELEVATION AND WINDAGE SOLUTIONS
- BATTERY IN NAVIGATION MODE: 100 HOURS
- BATTERY IN EXPEDITION MODE: 1000 HOURS
- BATTERIES USED: AAA (NOT INCLUDED)
- MULTI-BAND GNSS
- TESTED TO MIL-STD-810 TO WITHSTAND: SAND, DUST, VIBRATION, SHOCK, TEMPERATURE, ALTITUDE, HUMIDITY AND MORE
- IPX7 WATER-RESISTANCE RATING
- STEALTH MODE: DISABLES WIRELESS CONNECTIVITY
- KILL SWITCH: TO ERASE DEVICE MEMORY
- JUMPMaster MODE: TO CALCULATE HIGH-ALTITUDE RELEASE POINTS
- IMPROVED MONOCHROMATIC SCREEN, COMPATIBLE WITH NIGHT VISION GOGGLES
- NAVIGATION SENSORS: 3-AXIS ACCELEROMETER, 3-AXIS COMPASS & BAROMETRIC ALTIMETER
- COMPATIBLE WITH INREACH SATELLITE COMMUNICATOR

# GARMIN®

**AUTHORIZED DEALER**

\* AS AN AUTHORIZED GARMIN DEALER, WE HAVE ACCESS TO ALL GARMIN PRODUCTS.

IF YOU DONT SEE WHAT YOU ARE LOOKING FOR, PLEASE CONTACT YOUR SALES REP AND WE CAN GET A QUOTE OVER TO YOU ASAP!

## RESCUE GEAR



RANGER CHEST HARNESS  
(SKU: 64349)

- PADDED SHOULDER STRAPS WITH BREATHABLE D3 CLOTH
- EASILY CONNECTS TO A SIT HARNESS WITH A ALUMINUM DELTA QUICK LINK (INCLUDED)
- MADE FROM 1-INCH WEB AND CORDURA NYLON
- CHEST SIZE: UP TO 52 IN (132 CM)



RANGER HARNESS  
(SKU: 64348)

- UL CLASSIFIED TO NFPA CLASS II LIFE SAFETY HARNESS
- CORROSION-RESISTANT HARDWARE
- LOW-PROFILE, FLEXIBLE WAIST BELT AND LEG LOOPS
- VENTRAL LOAD-BEARING ATTACHMENT POINT RATED TO 16KN (3597LBF)
- REAR POSITIONING ATTACHMENT POINT RATED TO 13KN (2923 LBF)
- WORK POSITIONING SIDE ATTACHMENT POINTS
- SIZES: SMALL/MEDIUM/LARGE



RANGER QUICK HARNESS  
(SKU: 64350)

- UL CLASSIFIED TO NFPA CLASS II LIFE SAFETY HARNESS
- CORROSION-RESISTANT HARDWARE
- ALUMINUM AUSTRIALPIN COBRA QUICK-RELEASE BUCKLES ON FRONT LEG LOOPS
- LOW-PROFILE, FLEXIBLE WAIST BELT AND LEG LOOPS
- VENTRAL LOAD-BEARING ATTACHMENT POINT RATED TO 16KN (3597LBF)
- REAR POSITIONING ATTACHMENT POINT RATED TO 13KN (2923 LBF)
- WORK POSITIONING SIDE ATTACHMENT POINTS
- SIZES: SMALL/MEDIUM/LARGE

## RESCUE GEAR



**TACTICAL RAPPEL HARNESS**  
(SKU: 64351)

- WEB ATTACHMENT POINT AT FRONT WAIST FOR SILENT CONNECTIONS
- PADDED LEG LOOPS FEATURE BREATHABLE D3 FABRIC TO PROVIDE COMFORT
- WAIST AND LEG LOOPS CONSTRUCTED OF 1-3/4 IN MILSPEC WEB
- LEFT SIDE GEAR LOOP OFFERS EASY ACCESS
- CORROSION-RESISTANT COATED HARDWARE
- COLOR: BLACK
- WAIST SIZE: UP TO 56 IN (142 CM)
- POUCH SOLD SEPERATELY



- RUGGED CORDURA NYLON PANELS ON THE OUTSIDE
- BREATHABLE D3 CLOTH ON THE INSIDE
- (5) ANSI RATED ALUMINUM COBRA BUCKLES THAT ARE EXTREMELY QUICK TO CONNECT/DISCONNECT
- 2 INCH WEB STRAPS SECURELY SUPPORT THE DOG DURING RAPPELS AND HOISTS
- LARGE MOLDED RUBBER HAND GRIP
- STOWAWAY REAR-LIFT ASSEMBLY FITS AROUND DOG'S REAR LEGS FOR ADDITIONAL SECURITY
- ELASTIC LOOPS TO SECURE A LIGHT STICK
- ONE SIZE FITS MOST

\* **DOGGO NOT INCLUDED**

**K9 PROSERIES RAPPEL HARNESS**  
(SKU: 64352)



**S/S SURVIVOR 8**  
(SKU: 64354)



**S/S SURVIVOR 8**  
(SKU: 64353)



## NAVSEA MATTRESSES

**FIRE RESISTANT MATTRESSES ARE APPROVED FOR USE BY NAVSEA!**

MATTRESS, **INNERSPRING**, FR, SHIPBOARD NAVSEA

- COVERED WITH BREATHABLE, COTTON TICKING PER FEDERAL SPECIFICATION CCC-C-436E, TYPE II AND FIRE RETARDANT PER NFPA 701
- COMPLIES WITH FIRE SAFETY CRITERIA FOR MATTRESS TICKING STATED IN MIL-PRF-32568



### SIZES AVAILABLE:

- |                                   |               |
|-----------------------------------|---------------|
| • SIZE 1 - CREW, SHORT            | 4 x 26 x 72.5 |
| • SIZE 2 - CREW, STANDARD         | 4 x 26 x 76   |
| • SIZE 3 - CREW, LONG             | 4 x 26 x 80   |
| • SIZE 4 - CPO, STANDARD          | 5 x 28 x 76   |
| • SIZE 5 - CPO, LONG              | 5 x 28 x 80   |
| • SIZE 6 - CREW, SUBMARINE STD    | 4 x 26 x 73   |
| • SIZE 7 - CREW, SUBMARINE LONG   | 4 x 24 x 76   |
| • SIZE 8 - OFFICER, STANDARD      | 5 x 34 x 76   |
| • SIZE 9 - OFFICER/CPO, SUBMARINE | 5 x 26 x 76   |

**\* CONTACT YOUR SALES REP FOR PRICING & COMPLIANCE DOCUMENTATION!**

MATTRESS, **FOAM**, FR, SHIPBOARD NAVSEA

- COVERED WITH BREATHABLE, COTTON TICKING PER FEDERAL SPECIFICATION CCC-C-436E, TYPE II AND FIRE RETARDANT PER NFPA 701
- COMPLIES WITH FIRE SAFETY CRITERIA FOR MATTRESS TICKING STATED IN MIL-M-18351



### SIZES AVAILABLE:

- |                           |                |
|---------------------------|----------------|
| • SIZE 1 - CREW, SHORT    | 3 x 26 x 72.5  |
| • SIZE 2 - CREW, STANDARD | 3 x 26 x 76    |
| • SIZE 3 - CREW, LONG     | 3 x 26 x 80    |
| • SIZE 1 - CPO, STANDARD  | 4 x 28 x 76    |
| • SIZE 2 - CPO, LONG      | 4 x 28 x 80    |
| • SIZE 1 - OFFICER        | 6 x 28 x 76    |
| • SIZE 2 - OFFICER        | 6 x 34.75 x 76 |

**\* CONTACT YOUR SALES REP FOR PRICING & COMPLIANCE DOCUMENTATION!**



## FLAME-RESISTANT PILLOWS

FLAME RESISTANT SHIPBOARD PILLOWS FOR USE ABOARD U.S. NAVY VESSELS



- TYPE II - FOAM FILLED
- TYPE III - FIBER FILLED
- CLASS 1 - SOFT
- CLASS 2 - MEDIUM
- CLASS 3 - MEDIUM-FIRM
- CLASS 4 - FIRM

\* CONTACT YOUR SALES REP FOR PRICING

## FLAME-RESISTANT NOMEX

SHIPBOARD APPROVED PER MIL-C-24500  
ALL FABRIC AND COMPONENTS ARE IAW FEDERAL STD A-A-59473  
FOR SHIPBOARD USE



### AVAILABILITY:

- STANDARD COLORS: RED OR BLUE
- CUSTOM MTO COLORS: KHAKI, GREEN OR BLACK
- TWO PIECE CURTAIN SETS
- FAN PANEL CURTAINS
- LPD SIT UP RACK CURTAIN SETS
- PRIVACY CURTAINS
- REPLACEMENT RACK CURTAIN TRACK

## UPHOLSTERY

- UPHOLSTERY SERVICES ARE PERFORMED IAW MIL-STD-1623E (US NAVY) AND UTILIZE THE LATEST IN MIL-PRF-20092 FIRE-RESISTANT CUSHIONING TECHNOLOGY OFFERING VARIOUS COMFORT LEVELS
- A WIDE VARIETY OF SHIPBOARD APPROVED VINYL AND FABRICS ARE AVAILABLE FOR ANY SHIPBOARD UPHOLSTERY NEEDS
- CUSTOM FABRICATION OF CHAIR COVERS AND TABLE COVERS



## BERTHING RACK STRAPS



HURRICANE STRAP  
(SKU: XXXXX)



\* LEE STRAP ALSO  
AVAILABLE WITH TWO  
HOLE BRACKET

LEE STRAP W/ D-LOOP  
(SKU: XXXXX)

## SHIP VISITS

FIRE ETC'S MILITARY SALES TEAM HAS BASE ACCESS AND IS READILY AVAILABLE TO DO SHIP VISITS!

### WHAT IS THE ADVANTAGE?

THE SALES TEAM CAN:

- PROVIDE PERSONALIZED, FACE TO FACE INTERACTIONS
- TAKE PHOTOS FOR ACCURACY (IF APPLICABLE)
- TAKE MEASUREMENTS AND TEMPLATES FOR ACCURACY (IF APPLICABLE)
- MAKE RECOMMENDATIONS FOR OTHER UNFORSEEN REQUIREMENTS
- DELIVER ORDERS TO SHIP FOR FREE
- BRING SAMPLES TO THE SHIP BEFORE PURCHASE (FOR APPLICABLE ITEMS)

**CALL OR EMAIL TO SCHEDULE YOUR APPOINTMENT**

**MILITARYSALES@FIRE-ETC.COM**  
**(619) 525-7286**

# CUSTOM QUARTERDECK BOARDS



COMMAND BOARD



PERPTUAL BOARD



DEPARTMENT BOARD



RESIN PLAQUE



ACRYLIC PLAQUE

PLAQUES FOR THE BOARDS

BOARDS ARE ALL CUSTOM MADE TO ORDER.

\* RESIN PLAQUES HAVE A LONGER LEAD TIME THAN ACRYLIC \*

CONTACT THE SALES TEAM TO START WORKING ON YOUR DESIGN!

# CUSTOM FLAG BOXES



CROSSED ANCHORS FLAG BOX



SHIP WHEEL FLAG BOX

- \* STANDARD FLAG BOXES ARE ALSO AVAILABLE
- \* WOOD CHOICES: OAK, MAPLE, WALNUT OR MAHOGANY

## PODIUM



- \* PLAQUE CHOICE: ACRYLIC OR RESIN
- \* WOOD CHOICES: OAK, MAPLE, WALNUT OR MAHOGANY

## BELL STANDS



- \* BELL IS SOLD SEPARATELY
- \* WOOD CHOICES: OAK, MAPLE, WALNUT OR MAHOGANY

# CEREMONIAL BULLETS



CHROME BULLETS



BRASS BULLETS

\* BRAIDED ROPE IS ADDITIONAL

\* BULLETS ARE SOLD INDIVIDUALLY

\* WOOD CHOICES: OAK, MAPLE, WALNUT OR MAHOGANY

# CUSTOM POP-UP CANOPY



10 X 10

## CUSTOMIZATION OPTIONS:

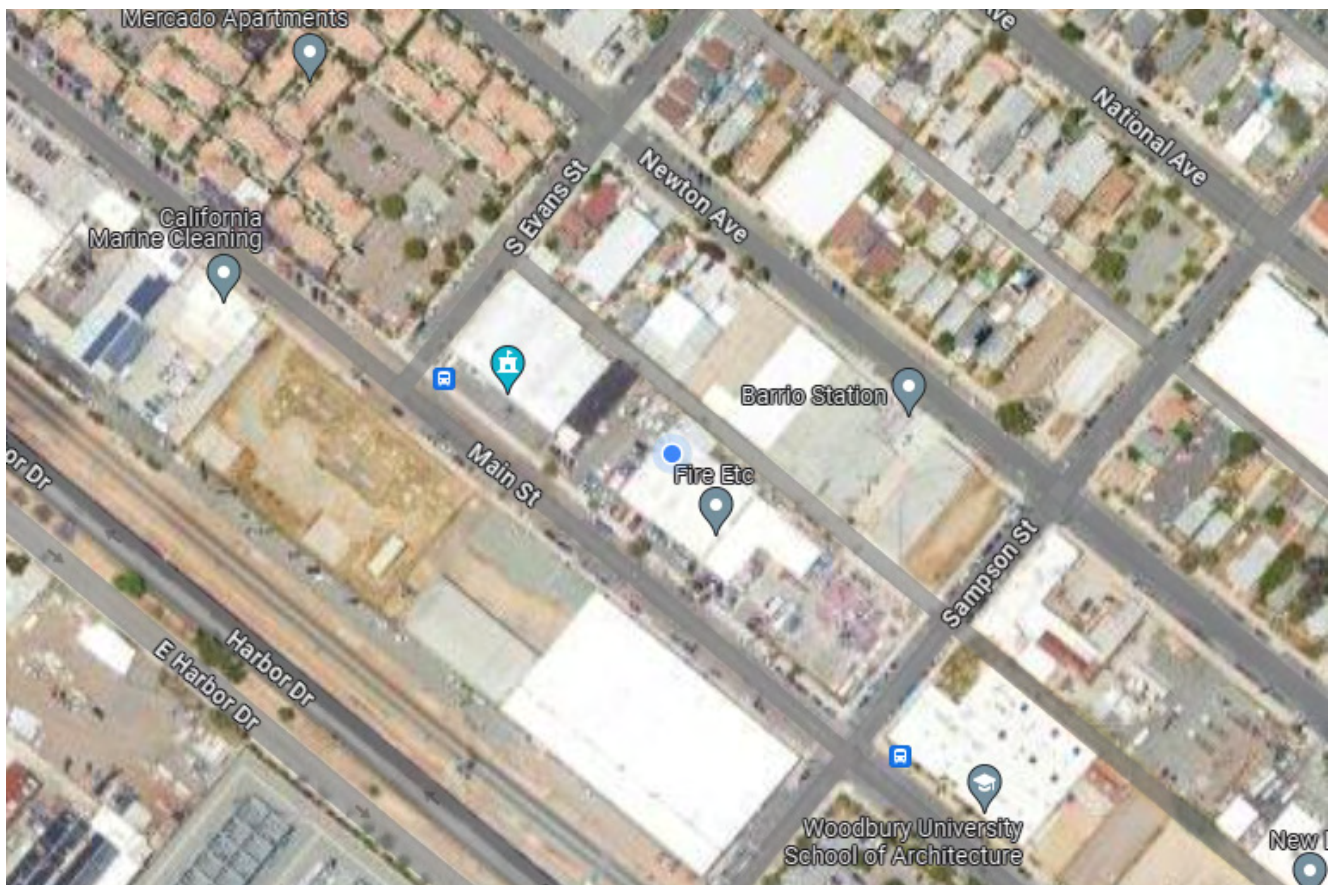
- SHIP'S CREST ON ALL FOUR TOP CANOPY
- CAN CHANGE TOP CANOPY COLOR
- DROP PANEL: SHIP'S NAME/MOTTO/HULL NUMBER
- CAN CHANGE DROP PANEL COLOR TO MAKE IT TWO TONED
- CAN ADD SIDE WALL PANELS TO PROTECT FROM THE ELEMENTS

# NOTES

# NOTES



**COME VISIT US!**



**2190 MAIN STREET, SAN DIEGO, CA 92113**

**(619) 525-7286**