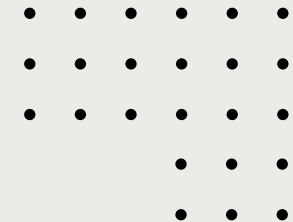




***SOELPEC***

**XR-5 DISPLAY  
USER GUIDE**



OH HELLO!

**YOU MUST HAVE A REALLY GOOD TASTE!  
WELCOME TO OUR WORLD, LET'S START!**



***SOELPEC***

# CONTENTS.

INTRODUCTION	<b>04</b>
PRODUCT FEATURES	<b>05</b>
HARDWARE CONNECTION	<b>07</b>
SOFTWARE INSTALLATION	<b>12</b>
SIMHUB SETTINGS	<b>14</b>
DISPLAY FUNCTIONS	<b>17</b>
PLUGIN SETTINGS	<b>19</b>
MAINTENANCE	<b>25</b>
WARRANTY & SUPPORT	<b>26</b>

# XR-5 DISPLAY

## INTRODUCTION

---

SOELPEC XR-5 Display offers a fresh approach to classical dashboard design with a 5-inch screen, custom developed backlit buttons, unique design elements and software features. Months of development went into combining the best-feeling and performing components to create the perfect dashboard display.

Crafted from premium materials, the display boasts a solid structure with a unique design. We strive to create cutting-edge sim racing equipment that brings racers closer to reality. Each product we craft is designed to offer an unparalleled racing experience.

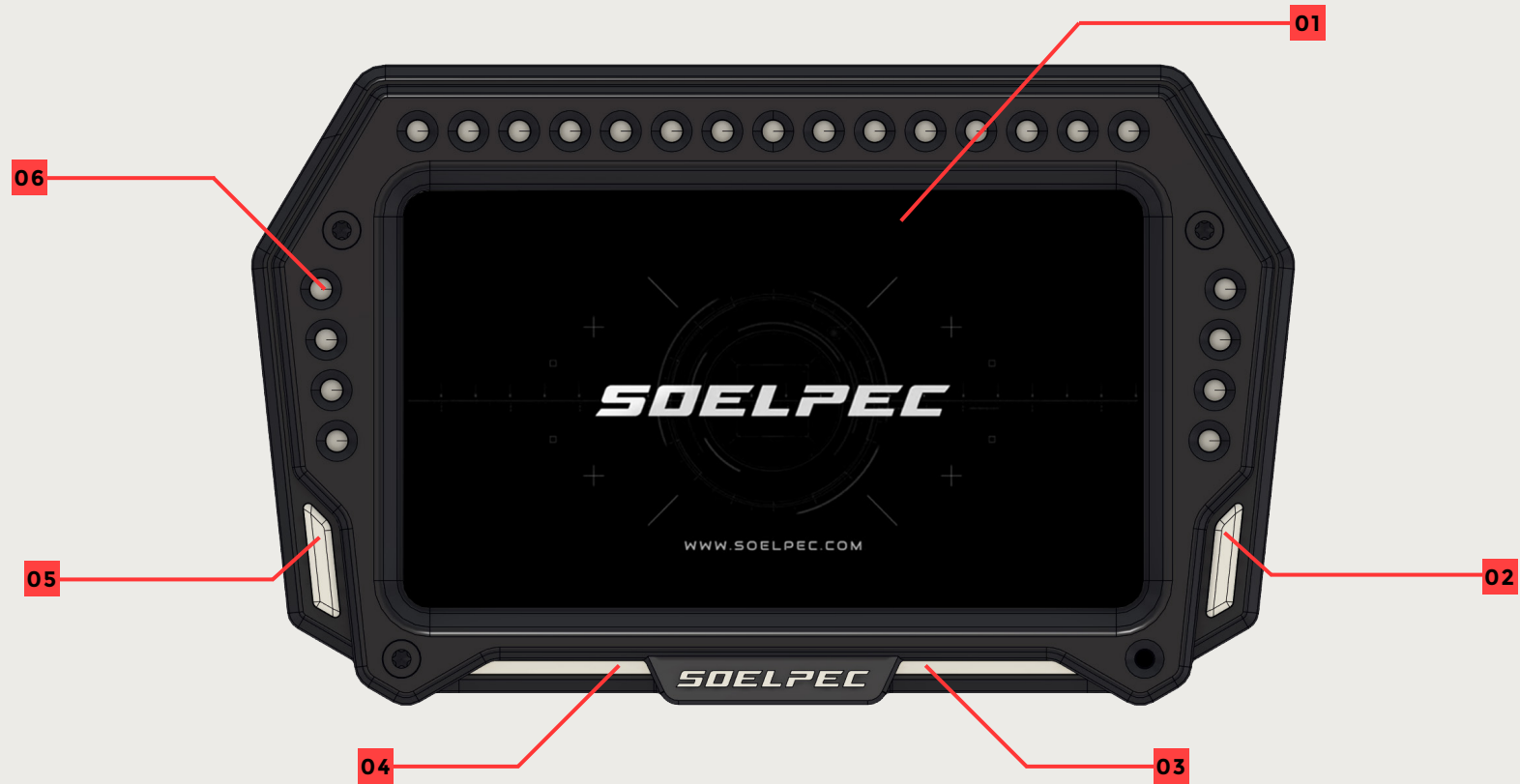
In this comprehensive user guide, you will find instructions to set up, configure, and optimize your XR-5 Display. Whether you're an accomplished racer or new to sim racing, this guide will be your trusted companion for exploring the XR-5 Display's features.

Thank you for considering SOELPEC for your sim racing needs. We're confident that you'll love our products, and we look forward to helping you take your virtual racing experience to the next level.

From SOELPEC with love ❤️

# XR-5 DISPLAY

## PRODUCT FEATURES



**01** 5-Inch Touchscreen Display

**02** Right Display Button

**03** Right Light Bar

**04** Left Light Bar

**05** Left Display Button

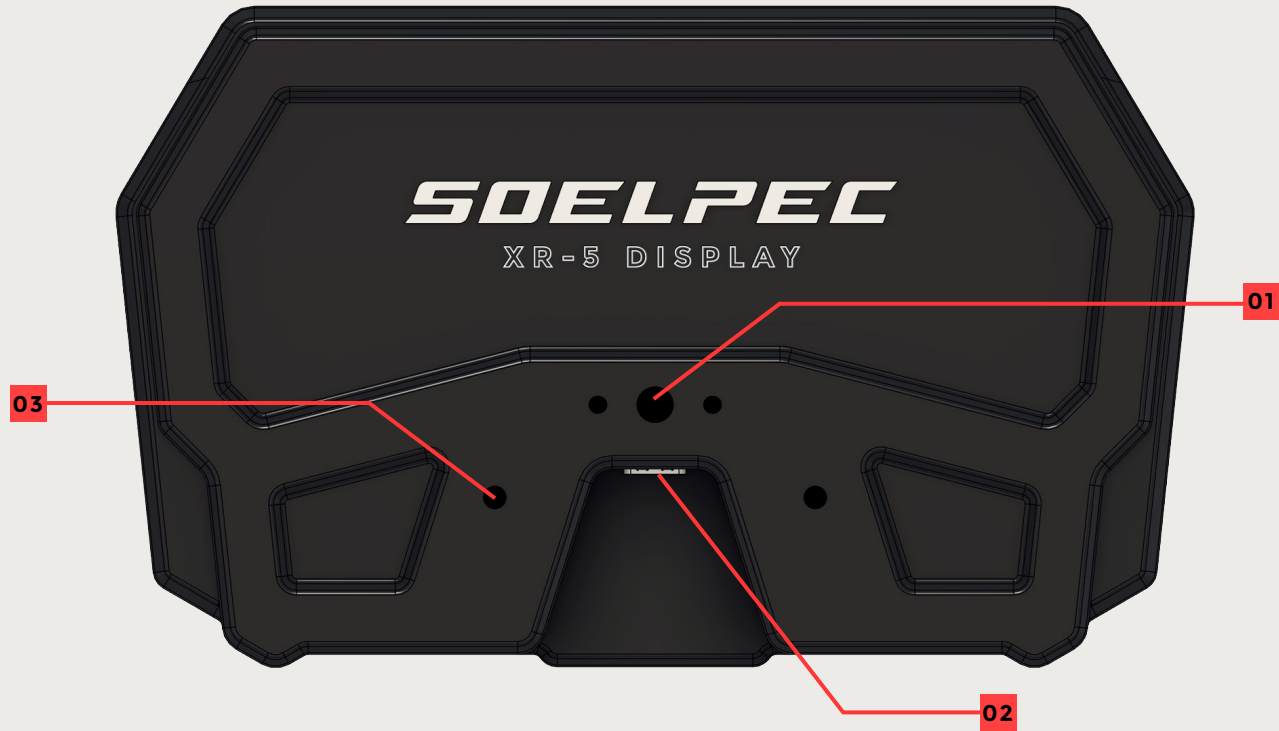
**06** 23x Telemetry Leds

**SOELPEC**

# XR-5 DISPLAY

## PRODUCT FEATURES

---



**01** 1/4 Inch Mount

**02** Type-C USB Port

**03** M4 Carbon Plate Mount

**SOELPEC**

# XR-5 DISPLAY

## HARDWARE CONNECTION

### MOUNTING THE DISPLAY

The SOELPEC XR-5 Display comes with dedicated mounting hardware and tools, providing two different options for securing it to your rig.

You have the choice to use the flat mount carbon plate or the adjustable mounting system which grants you the flexibility to find the perfect ergonomic position for your display. Additionally, the rear 1/4 Inch mount gives you the chance to attach any suitable common mounting options for endless possibilities.

Please follow the steps to find out which option better suits your needs.



# XR-5 DISPLAY

## HARDWARE CONNECTION

### MOUNTING THE DISPLAY

The flat mount carbon plate offers a mounting solution similar to the most common wheelbase attachments.

This plate is designed with holes compatible with the majority of wheelbases available in the market. Additionally, it features slots that allow for easy height adjustments for the display.

To attach the mounting plate, use the provided M4 x 10mm countersunk screws and the 2.5mm allen key and aligning them with the threaded holes indicated by arrows. For securing the opposite end of the plate to your wheelbase, consult the hardware recommendations provided by the wheelbase manufacturer.





# XR-5 DISPLAY

## HARDWARE CONNECTION

### MOUNTING THE DISPLAY

The adjustable mounting hardware allows you the flexibility to position your dashboard along two axes.

Position the **Mounting Part 01** on the rear side and secure it using the provided M3x6mm screws to the threaded holes indicated by arrows.

Secondly, attach the **Mounting Part 02** to the **Adjustable Mount Carbon Bracket 04**. Fasten it from behind using the included 1/4-inch screw.

Finalize the assembly by attaching the **Mount Extension Part 03** between both mounting parts. Use the provided M5x18mm screws to secure them in place.



# XR-5 DISPLAY

## HARDWARE CONNECTION

### MOUNTING THE DISPLAY

To secure the whole assembly to your wheelbase, consult the hardware recommendations of the manufacturer.

To achieve your preferred placement, loosen the M5 screws that secure the extension arm, adjust the display accordingly, and then re-tighten the M5 screws to ensure the brackets remain stable in the chosen position.

The adjustable mounting system is designed to be combined with widely used camera extension arm standards. For additional customization of the extension's length, you can also use aftermarket solutions. The default extension arm provided in the package adds 70mm to the length, offering an optimal starting configuration.



**SOELPEC**

# XR-5 DISPLAY

## HARDWARE CONNECTION

### CONNECTING TO YOUR PC

After securely attaching the XR-5 Display to your wheelbase, plug in the Type-C USB cable to the rear side port of the display. Then plug the other end of the cable into an available USB port on your PC or USB Hub.

**+** **CAUTION:** We recommend using a powered USB hub to ensure a healthy and stable connection between the display and your PC. Using the display with high brightness settings without a powered USB hub may lead to a loss of connection during use.



# XR-5 DISPLAY

## SOFTWARE INSTALLATION

---

### SIMHUB INSTALLATION

To fully utilize the functions of the XR-5 Display, you need to have the latest version of **SimHub** installed on your PC. You can download the latest version [HERE](#) and proceed with the installation. During the installation process, remember to select the option "**Download and Install USB Display Drivers**" to include the required drivers for the 5-inch Vocore display.

### SOELPEC DASHBOARD INSTALLATION

To fully unlock all the capabilities of the XR-5 Display, you must install a dedicated **SOELPEC Dashboard** file into SimHub. This installation enables seamless interaction with wheel functions and settings directly on the 5-inch display, while also eliminating the need for a proprietary software.

Access the latest version of the SOELPEC Dashboard by clicking [HERE](#). Double-click on the downloaded dashboard file and click the "**Import Into SimHub Library**" button to install the SOELPEC Dashboard file. Don't forget to download & install required fonts to your PC.

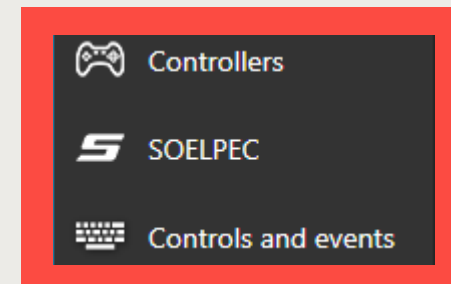
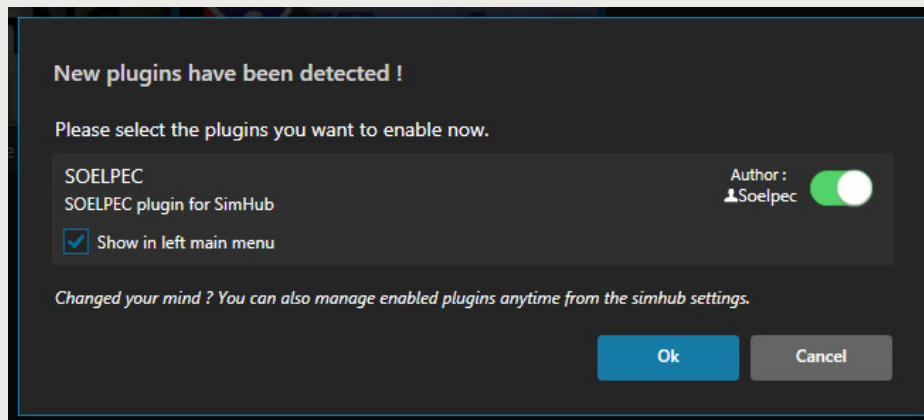
# XR-5 DISPLAY

## SOFTWARE INSTALLATION

### SOELPEC SIMHUB PLUGIN INSTALLATION

To establish communication between XR-5 Display and SimHub, you need to install SOELPEC's dedicated SimHub plugin. Download the plugin from [HERE](#).

Once the download is complete, close SimHub, copy and paste the "**SOELPEC Plugin.dll**" file into your default SimHub folder, usually located at "**C:\Program Files (x86)\SimHub**". After completing this step and launching SimHub, a pop-up window will appear, requesting permission to install the plugin. Click on both checkmarks to install the SOELPEC Plugin, which will then appear on the left side of your SimHub window. You can access this plugin tab to get an overview of the display's status and function states.



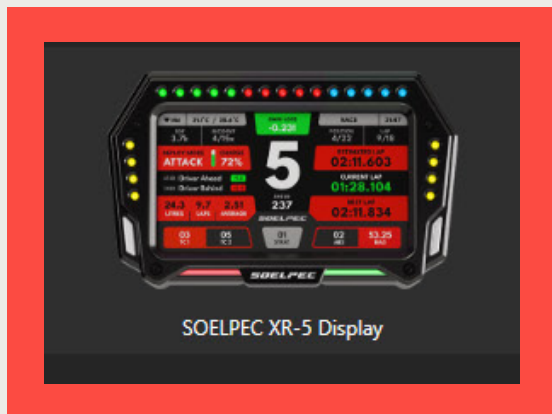
# XR-5 DISPLAY

## SIMHUB SETTINGS

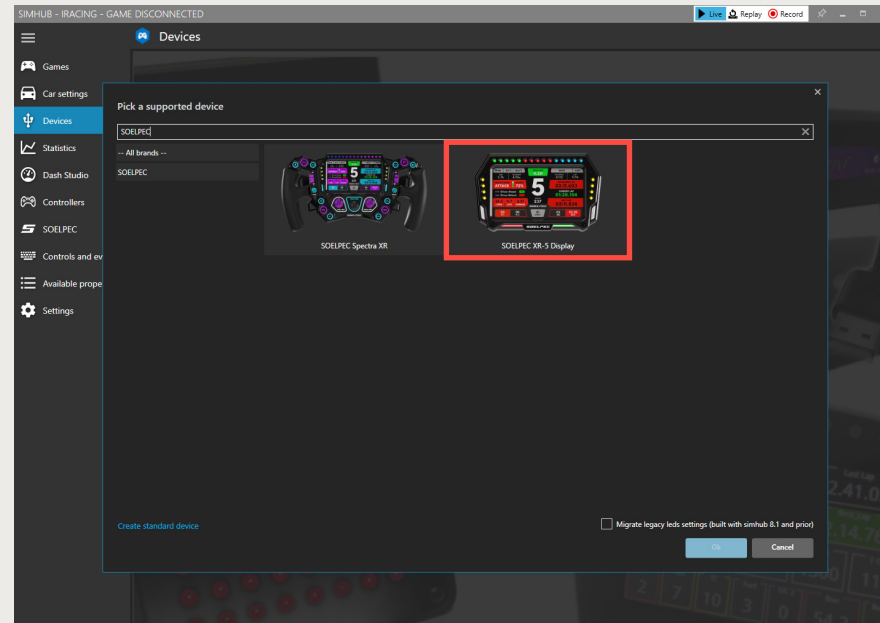
### CONFIGURING XR-5 DISPLAY

While SimHub software is running, go to the **"Devices"** section on the left side of the window to add your XR-5 Display. Which is listed under the name **"SOELPEC"**

By adding your device to SimHub, you gain access to various settings related to the display.



► Select **SOELPEC XR-5 Display**



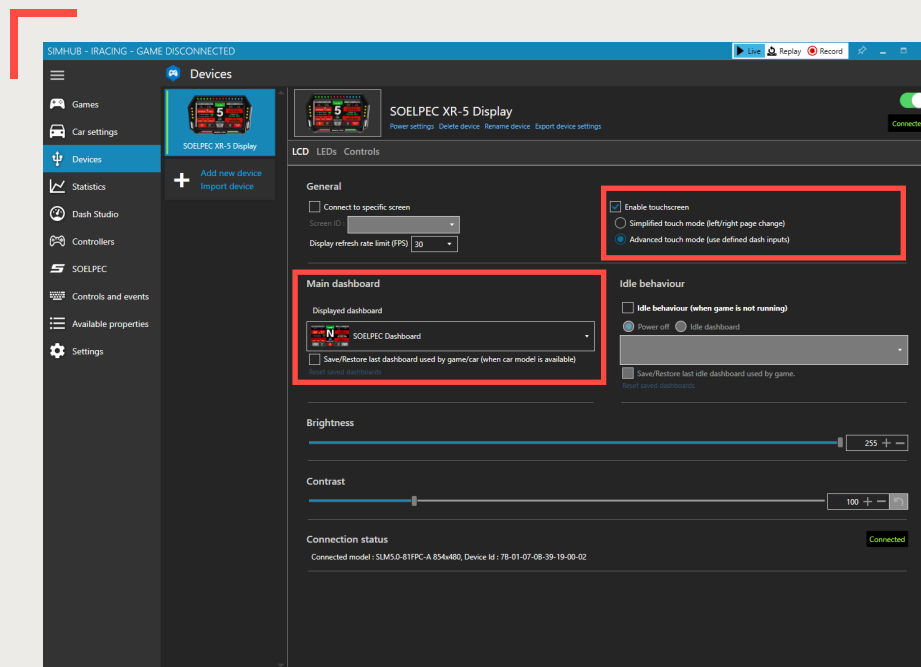
**SOELPEC**

# XR-5 DISPLAY

## SIMHUB SETTINGS

### DISPLAY CONFIGURATION & SETTINGS

In this section, you can adjust all Vocore display and touch input related settings. Choose the **"SOELPEC Dashboard"** file from the dropdown menu, and make sure the **"Advanced Touch Mode"** is selected in the touchscreen settings.



- Enable touchscreen
- Simplified touch mode (left/right page change)
- Advanced touch mode (use defined dash inputs)

▶ **Select Advanced Touch Mode**

- Main dashboard**
- Displayed dashboard
- SOELPEC Dashboard
- Save/Restore last dashboard used by game/car (when car model is available)

▶ **Select SOELPEC Dashboard**

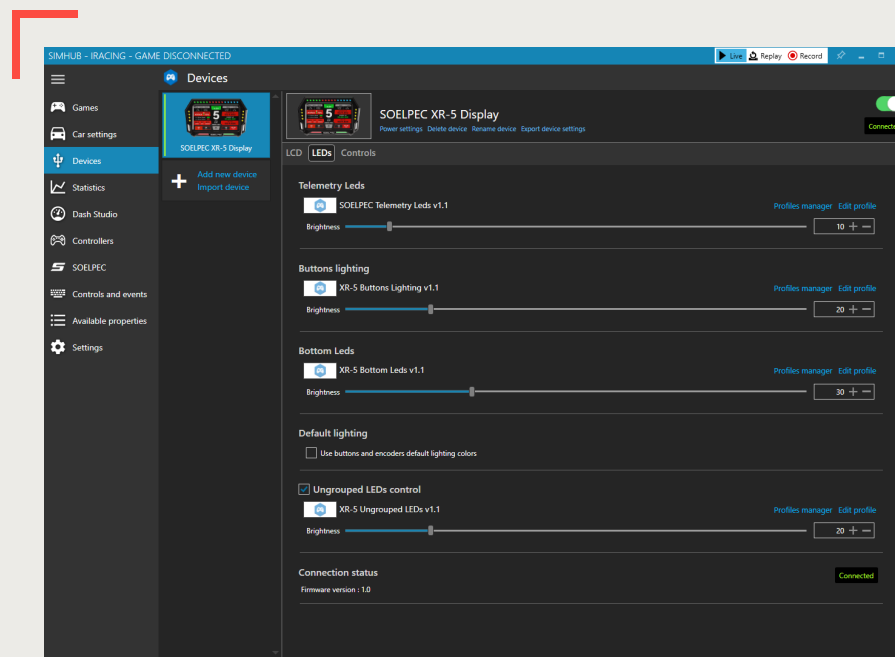
**SOELPEC**

# XR-5 DISPLAY

## SIMHUB SETTINGS

### LED PROFILE & BRIGHTNESS ADJUSTMENTS

In the LED profile settings, you can independently control the Telemetry and Button Lighting sections and adjust their brightness levels. For a more comprehensive configuration within the LED profiles, click on the **"Edit Profile"** to access the LED configuration windows.



**SOELPEC**

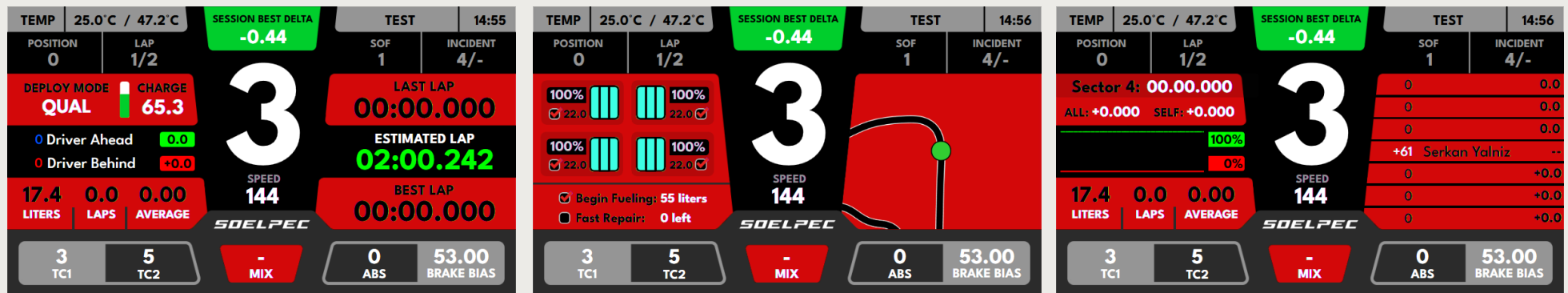


# XR-5 DISPLAY

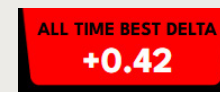
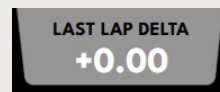
## DISPLAY FUNCTIONS

### NAVIGATING SOELPEC DASHBOARD

The SOELPEC dashboard features multiple pages with different data screens. You can easily scroll through these pages using **“Left & Right Display Buttons”**, customizing your display while you racing.



Delta display section can be easily toggled between Session Best, Last Lap, and All-Time Best Lap delta timings. You can bind Action (C) control for this function.



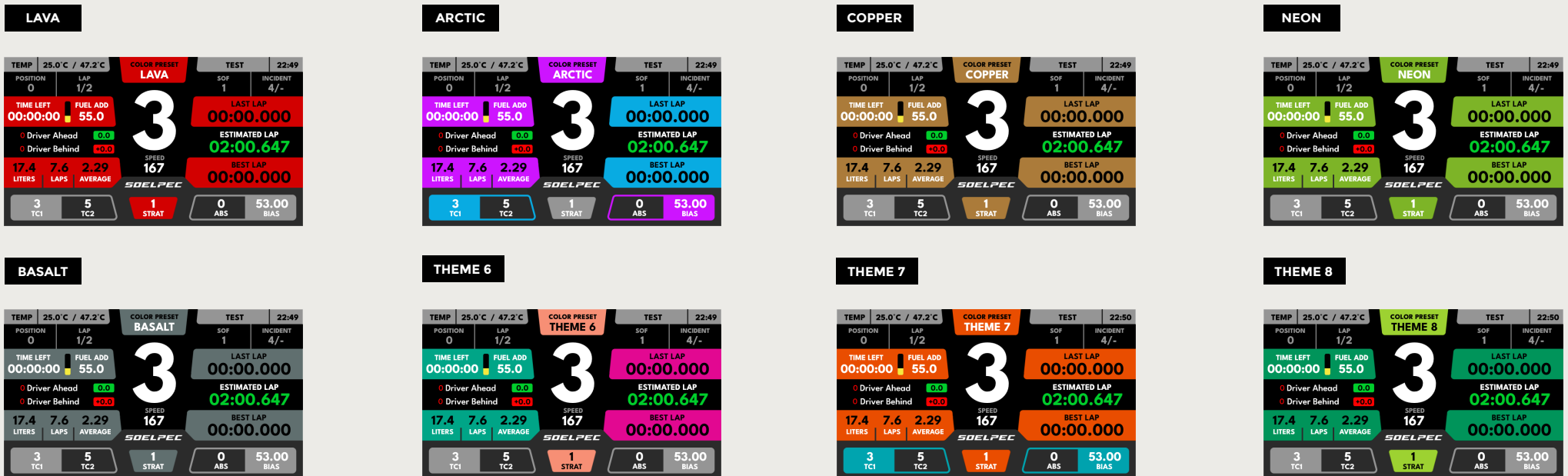
**SOELPEC**

# XR-5 DISPLAY

## DISPLAY FUNCTIONS

### COLOR MODE CHANGE

SOELPEC Dashboard comes equipped with 8 different pre-configured illumination themes. To change the dashboard colors, you can either use the buttons or the touchscreen. Click on the **“Controls”** section in the devices menu and configure **“Show next dash screen”** and **“Show previous dash screen”** to scroll through these color variants.



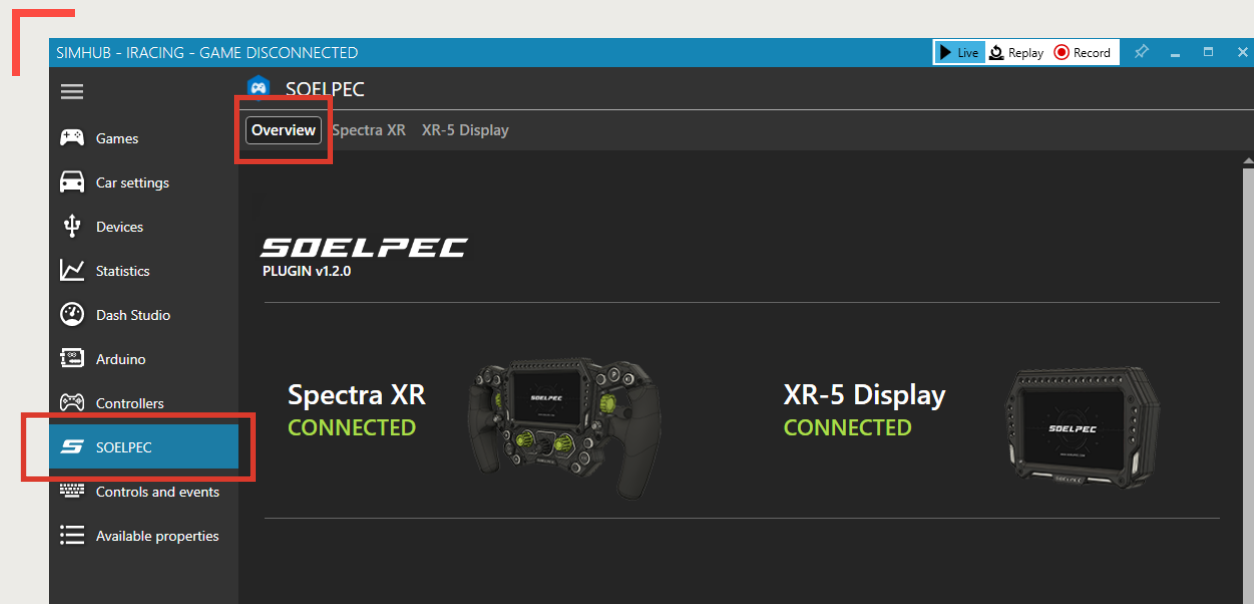
**SOELPEC**

# XR-5 DISPLAY

## PLUGIN SETTINGS

### PLUGIN OVERVIEW

The SOELPEC SimHub Plugin serves as a vital communication tool between your display and your PC. It provides essential features such as monitoring display status. Additionally, within the plugin you can customize display presets, dashboard and illumination functions. You can also access the XR-5 Display tab within the plugin to explore more advanced customization options.



**SOELPEC**

# XR-5 DISPLAY

## PLUGIN SETTINGS

### DASHBOARD CUSTOMIZATION

In this section, you can fully customize the bottom adjustments part of the SOELPEC Dashboard to your liking. In each of the five sections, choose from various options available in the dropdown menu. These selections will be stored within the plugin.

**DASHBOARD CUSTOMIZATION**  
Customize the bottom adjustment section of the SOELPEC Dashboard

LEFT THUMB MODE 1: TRACTION CONTROL

LEFT THUMB MODE 2: TRACTION CONTROL 2

CENTER DATA: FUEL MIX

RIGHT THUMB MODE 1: BRAKE BIAS

RIGHT THUMB MODE 2: ABS

TEMP 0.0°C / 0.0°C

DELTA DISPLAY OFF

TEST 17:36

POSITION 0 LAP 0/0

SOFT 0 INCIDENT 0/0

TIME LEFT 00:00:00 FUEL ADD 0.0

0 Driver Ahead 0.0

0 Driver Behind +0.0

0.0 0.0 0.0

LITERS LAPS AVERAGE

SPEED 0

SOELPEC

LAST LAP 00:00.000

ESTIMATED LAP 00:00.000

BEST LAP 00:00.000

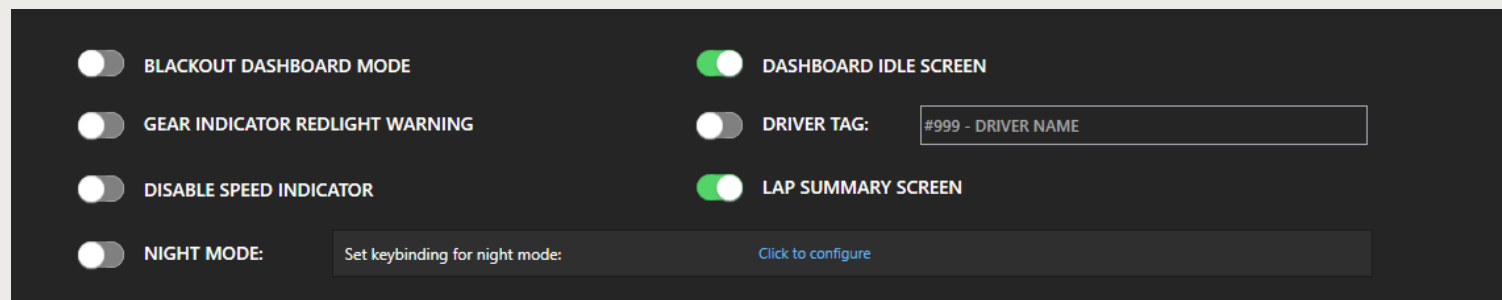
LEFT THUMB MODE 1 LEFT THUMB MODE 2 CENTER DATA RIGHT THUMB MODE 2 RIGHT THUMB MODE 1

# XR-5 DISPLAY

## PLUGIN SETTINGS

### ADVANCED CUSTOMIZATION

In this section, you can make additional customizations related to the dashboard and the appearance of your display.



**BLACKOUT DASHBOARD MODE:** Enabling this option allows you to switch to a more traditional-looking dashboard theme with a more subtle appearance.

**GEAR INDICATOR REDLIGHT WARNING:** Choose to enable or disable the red blinking effect on the gear indicator when the car reaches the rev limiter.

**DISABLE SPEED INDICATOR:** Choose to enable or disable the speed indicator under the current gear display. This option provides room for a bigger gear indicator.

# XR-5 DISPLAY

## PLUGIN SETTINGS

---

### ADVANCED CUSTOMIZATION

**NIGHT MODE:** This option offers a way to dim the brightness of the display and changing colors to more generic Red, Blue, Yellow, and Green styles, more suitable for night driving. This mode also adjusts the colors of the display buttons to the matching theme. To switch between different colors, touch-screen can be used. To enable or disable Night Mode, use the toggle or add a keybinding to this function for a button press.

**DASHBOARD IDLE SCREEN:** By default, SOELPEC Dashboard utilizes an idle screen with a video animation, which shows up when you are not in the game. You can disable this screen to display in-game data screens even when you are not racing.

**DRIVER TAG:** This option allows you to customize the idle screen by adding the driver's name and number over the splash screen, syncing with the selected color profile.

**LAP SUMMARY SCREEN:** Choose to enable or disable the lap summary screen, which appears briefly after each lap, providing information about the last lap stats.

# XR-5 DISPLAY

## PLUGIN SETTINGS

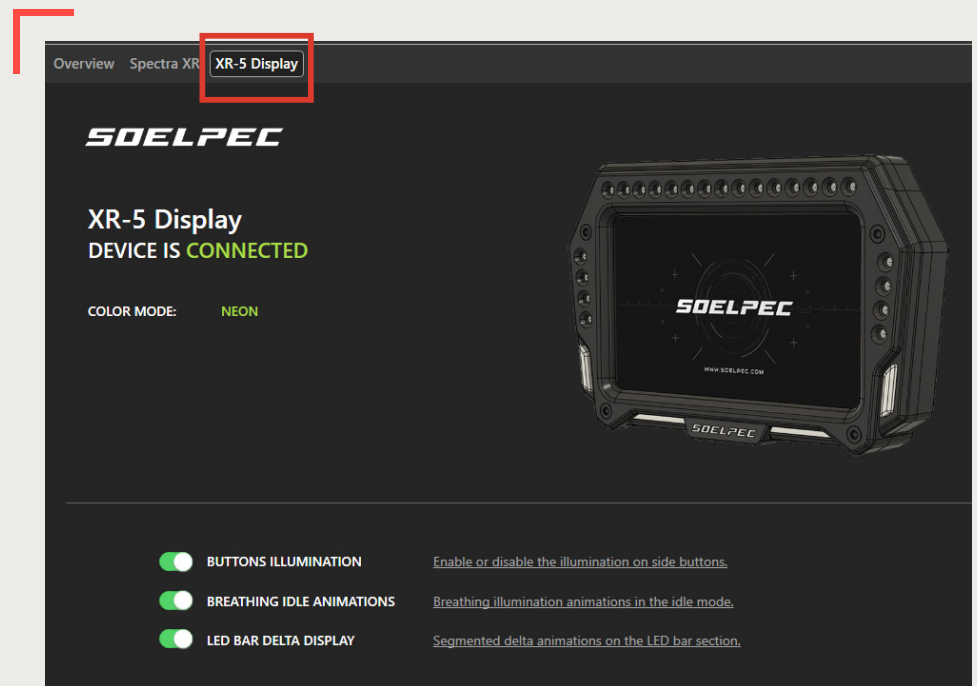
### ADVANCED CUSTOMIZATION

Dedicated “XR-5 Display” tab within the Soelpec plugin, you can access more information about the current status of your XR-5 Display. Additionally, various specific illumination options can be customized under this tab.

**BUTTONS ILLUMINATION:** Option to enable or disable the button illuminations of the XR-5 Display.

**BREATHING IDLE ANIMATIONS:** Enabling this mode applies breathing illumination effects when the display is in the idle mode.

**LED BAR DELTA DISPLAY:** Option to enable or disable the delta bar animations at the bottom part of the XR-5 Display.



# XR-5 DISPLAY

## PLUGIN SETTINGS

### REV LIGHTS CUSTOMIZATION

XR-5 Display features a rev light strip on top of the dashboard, including 15 individual LEDs. In this customization section, you can choose one of the pre-defined rev light styles from the dropdown menu. The menu also includes a car-specific rev light option to simulate the real car animations for the rev lights. "Car Specific" option is only available for the iRacing currently.

The screenshot shows the 'REV LIGHTS CUSTOMIZATION' settings menu. On the left, there is a dropdown menu with 'CAR SPECIFIC ANIMATIONS' selected, highlighted by a red box. Below the dropdown is a note: '\* Car specific animations are currently only available for iRacing.' On the right, there are six options, each with a 15-LED color strip visualization and a text label:

- LINEAR BLUE TO RED
- LINEAR RED TO YELLOW
- MIRRORED BLUE TO RED
- MIRRORED RED TO GREEN
- SEGMENTED
- CAR SPECIFIC ANIMATIONS



# XR-5 DISPLAY

## MAINTENANCE

---

### MAINTENANCE

The XR-5 Display is designed for minimum maintenance, ensuring a hassle-free experience.

Follow these guidelines to ensure the longevity and optimal performance of your product:

- Ensure that the Type-C USB cable is detached to prevent any potential damage before doing any maintenance.
- In order to keep the display in pristine condition, gently wipe them with a microfiber cloth.
- Be cautious not use to isopropyl alcohol on the display, and do not apply excessive pressure on the display part while cleaning the surface.
- The XR-5 Display is intended for indoor use only. It should be shielded from extreme heat and humidity to prevent any potential damage to its components.
- If you plan to store the display for an extended period of time, it's advised to remove the Type-C USB cable from the display.

# XR-5 DISPLAY

## WARRANTY & SUPPORT

---

### WARRANTY

To initiate a warranty claim, please contact customer support team at **info@soelpec.com** with the required informations in our website. Our team will review your claim and guide you through the necessary steps to resolve the issue promptly.

For more detailed information regarding warranty coverage, please visit the warranty conditions on our website **HERE**.

### SUPPORT

By following all these steps in these user guide, you can connect, configure, and fully utilize the features of your XR-5 Display.

If you encounter any issues or require further assistance, head out to our **SUPPORT PAGE**, or join our **DISCORD SERVER** to create a ticket for help.



***SOELPEC***

**SOELPEC.COM**