



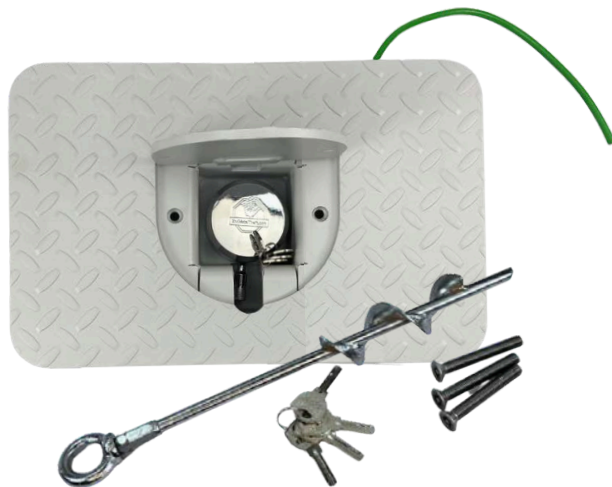
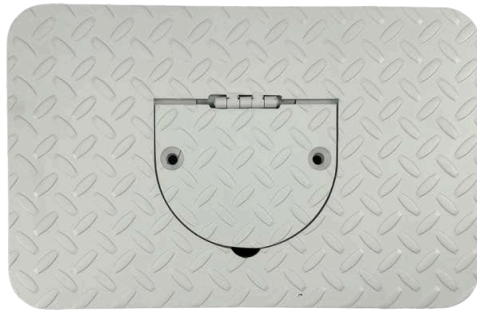
END METAL THEFT LLC

Electrical Junction Box Locking Cover Options & Ordering Guide

WWW.ENDMETALTHEFT.COM (480) 745-3999

Page 1 of 8

End Metal Theft™ is revolutionizing infrastructure security with their innovative Electrical Box Locking Covers, specifically designed to protect vulnerable junction boxes from copper thieves. The three-part locking systems with a concealed or shielded puck lock and reinforced steel construction provides unprecedented protection compared to traditional covers, safeguarding valuable electrical components and maintaining the integrity of America's critical infrastructure.



IGL10-1/2X12-5/8R Pictured

How It Works:

In-ground J Box Locking Cover

The In-Ground J Box Locking Cover uses a three-part security system to protect valuable infrastructure. First, a uniquely designed steel base plate is secured to the junction box with concrete screws on all sides, and optional anchor for maximum protection. Next, the heavy-duty steel cover sets and bolts directly to this base plate. The critical security component is the hidden puck lock system - the puck lock attaches to a specialized locking tab from the base plate that protrudes through the cover. This entire locking mechanism is concealed behind a cap, which itself is attached with a heavy-duty hinge and secured with two counter sunk, keyed bolts requiring specialized tools. This multi-layered approach creates a virtually impenetrable barrier against common theft techniques including bolt cutters, pry bars and even attempts to remove the entire unit.

Features:

- **Made in the USA**
- ¼" Plate steel construction for maximum durability and cut resistance
- Unique layered locking system
- Keyed alike to all ordered boxes for simplified management
- Tamper-resistant, keyed bolts prevent unauthorized access
- Diamond plate slip-resistant surface for safety
- Tight-fitting design eliminates leverage points for pry tools
- Optional deep anchoring system (for boxes not mounted in concrete or asphalt)
- Quick installation compatible with existing box
- Ground wire in place for code compliance
- Powder coated for maximum lifespan
- Lock constructed with corrosion resistant material



END METAL THEFT LLC

Electrical Junction Box Locking Cover Options & Ordering Guide

WWW.ENDMETALTHEFT.COM (480) 745-3999

Page 2 of 8

How It Works:

Transit Box Locking Cover

The Transit Box Locking Cover uses a three-part security system to protect valuable infrastructure. This system is a base plate and a top plate that is then secured by the Round Puck Key Lock. The base plate slides over the existing lid of the transit box, then the top plate slides over the base plate where they will interlock. The critical security component is the puck lock system as it attaches to the specialized locking tab from the base plate that protrudes through the top plate. The front cover plate is secured with a heavy-duty puck lock, shielded inside the high strength, coated, steel body. This protects the critical securing components from bolt cutters and other hand tools while keeping the keyhole easily accessible.



Features:

- **Made in the USA**
- 1/4" Plate steel construction for maximum durability and cut resistance
- Unique layered locking system
- Keyed alike to all ordered boxes for simplified management
- Tight-fitting components
- Quick installation compatible with existing box
- Powder coated for maximum lifespan
- Lock constructed with corrosion resistant material



END METAL THEFT LLC

Electrical Junction Box Locking Cover Options & Ordering Guide

WWW.ENDMETALTHEFT.COM (480) 745-3999

Page 3 of 8

Part Number Guide:

PART NO. EXAMPLE

Size ID

X

Cover Style	Overall Width (in)	Overall Length (in)	Cover Shape	Powder Coat Color
IGL = In-ground Locking Cover TB = Transit Box Locking Cover	Measures the widest part of cover	Measures the tallest part of cover	C = Circle R = Rectangle S = Square X = Other	(blank) = Light Gray X = Custom



Cover Style	Description
IGL	Base Plate, Cover with Hinged Cap, Keyed Bolts, Puck Lock, Anchor* & Unique Keyed
TB	Base Plate, Top Plate, Puck Lock & Unique Keyed

*If your box has been set in asphalt or concrete, there is generally no need for the anchor. The anchor is optional for boxes set in dirt or earth.



DISCLAIMER: To ensure proper functionality of our product, we request to have a sample cover shipped to us. For best results, send the box and cover. Sending us a sample is the best way for us to ensure proper fitment.



END METAL THEFT LLC

Electrical Junction Box Locking Cover Options & Ordering Guide

WWW.ENDMETALTHEFT.COM (480) 745-3999

Page 4 of 8

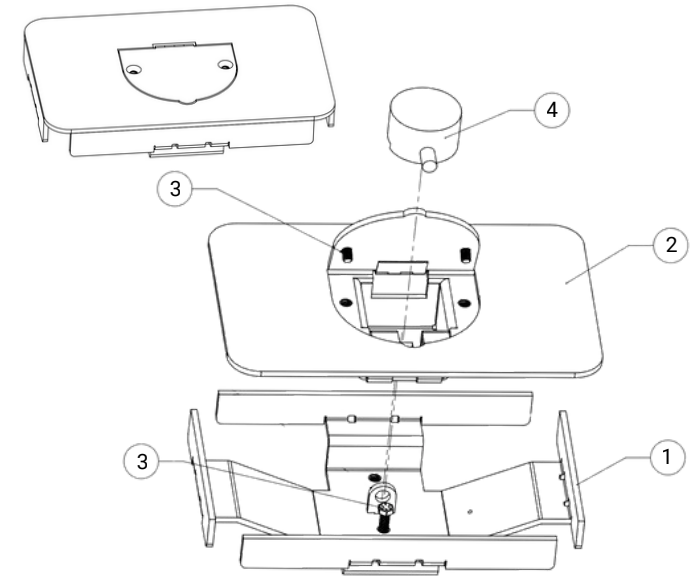
Cover Style:

In-ground Locking Cover

The In-ground J Box Locking Cover kit comes with a base plate (1), a cover with a hinged cap (2), security screws [also known as a specialized key tamperproof screw] (3) and a keyed puck lock (4).

The cover is available in various sizes and should be ordered according to the specifications of your specific junction box.

If we do not currently offer an In-ground Locking Cover in a size you require, please submit your cover for specification and mail your samples to End Metal Theft™.

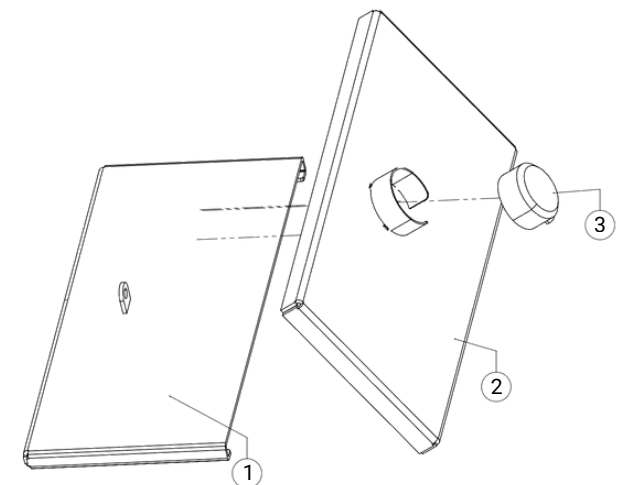


Transit Box Locking Cover

The Transit Box Locking Cover kit comes with a base plate (1), a top plate (2) and a keyed puck lock (3).

The cover is available in various sizes and should be ordered according to the specifications of your specific hand hole cover.

If we do not currently offer an Transit Box Locking Cover in a size you require, please submit your cover for specification and mail your samples to End Metal Theft™.





END METAL THEFT LLC

Electrical Junction Box Locking Cover Options & Ordering Guide

WWW.ENDMETALTHEFT.COM (480) 745-3999

Page 5 of 8

Overall Width & Height:

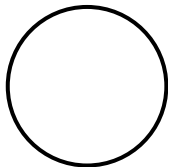
Overall Width & Height are the dimensions of each cover option. These numbers are used to further identify the products by size, known as the **Size ID**. Actual Width & Height as it relates to the Size ID is further detailed in the **Critical Cover Measurements** chart on page #.

Cover Shape:

Our Locking Covers are available in a variety of shapes. The standard cover shapes, rectangle and square, are readily available while additional shape solutions are explored when those needs arise.

Basic cover shapes include but are not limited to:

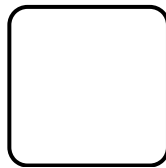
- **Circle**



- **Rectangle**



- **Square**



- **Other***

*Often require a sample cover to guarantee a perfect match.

If your box cover does not fit the shape categories listed, then you may submit your shape under **Other**. Shapes that have rounded edges or corners may require unique products in order to guarantee a perfect match. It is best to send us a sample cover to **1745 W Deer Valley Road, Suite 110, Phoenix, AZ 85027**.

If we do not currently offer a Locking Cover in a size you require, please use the instructions above to submit your cover for specification. **This step is required if your hand hole cover has rounded edges or corners.**



END METAL THEFT LLC

Electrical Junction Box Locking Cover Options & Ordering Guide

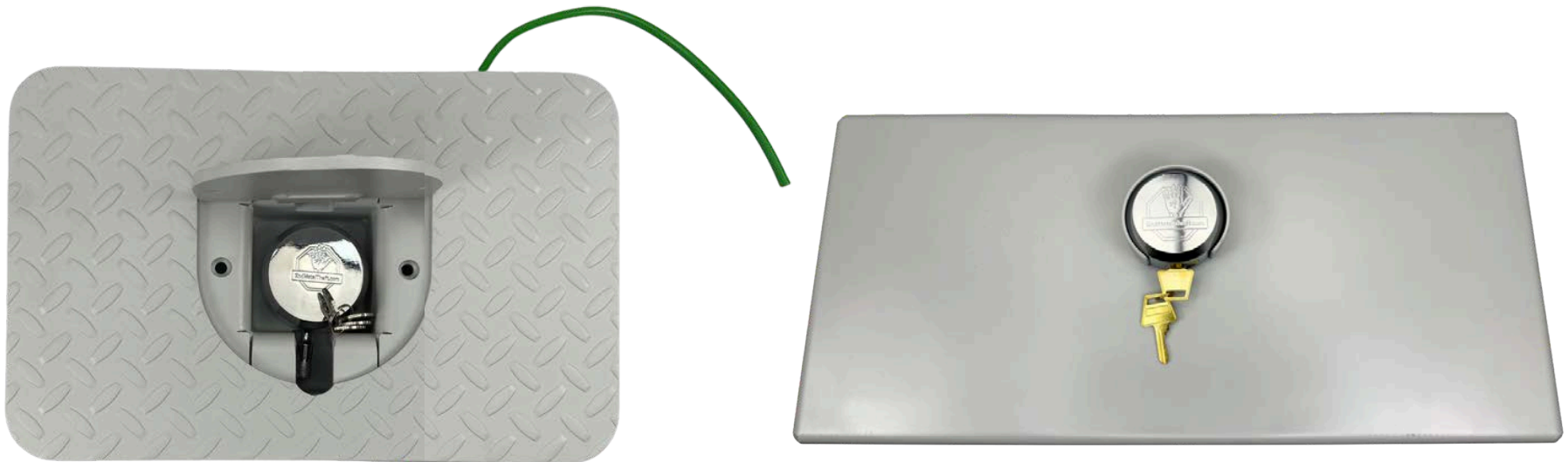
WWW.ENDMETALTHEFT.COM (480) 745-3999

Page 6 of 8

Powder Coat Color:

End Metal Theft™ offers Locking Covers in a standard, Light Gray-colored, powder coating, matching most junction and transit boxes.

If a custom color is required for your order, please submit your cover for specification.





END METAL THEFT LLC

Electrical Junction Box Locking Cover Options & Ordering Guide

WWW.ENDMETALTHEFT.COM (480) 745-3999

Page 7 of 8

Critical Cover Measurements:

Part No.	Size ID	Actual Width	Actual Length	Actual Depth	Base Plate Width	Base Plate Length	Base Plate Depth	Shape
IGL10-1/2X12-5/8R	10-1/2X12-5/8	10 1/2"	12 5/8"					RECTANGLE
IGL24X35-1/2R	24X35-1/2	24"	35 1/2"					RECTANGLE



END METAL THEFT LLC

Electrical Junction Box Locking Cover Options & Ordering Guide

WWW.ENDMETALTHEFT.COM (480) 745-3999

Page 8 of 8

Ordering Information:

Part Number	Cover Style	Overall Width (in)	Overall Length (in)	Cover Shape	Powder Coat Color
IGL10-1/2X12-5/8R	IN-GROUND LOCKING COVER	10 1/2"	12 5/8"	RECTANGLE	LIGHT GRAY
IGL24X35-1/2R	IN-GROUND LOCKING COVER	24"	35 1/2"	RECTANGLE	LIGHT GRAY