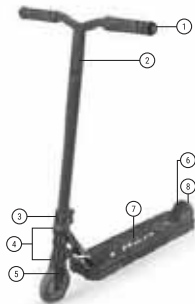


**COMPONENTS / EINZELTEILE DES ROLLERS / COMPONENTES DEL PATINETE /
COMPOSANTS DU SCOOTER / SPARKESKYKELENS DELER / SPARKYKKELEN DELAR**

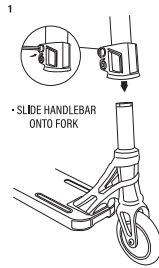


**REQUIRES / ERFORDERLICH / SE REQUIERE
REQUIERT / FØLGENDE ER NØDVENDIGT / KRÄV**

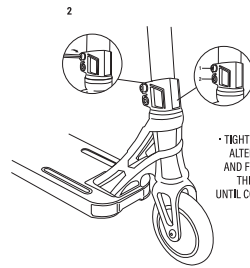


120MM X 10MM ALLEN KEY ALLEN HEADLESS BUSHES
120MM X 10MM RUBBER LUGS, RUBBER COATED, IN 1/8" BUMPING ENTHALTEN
120MM X 10MM LUGS, RUBBER COATED, IN 1/8" BUMPING
120MM X 10MM CLE ALLEN LES CLE ALLEN SANS TÊTE
120MM X 10MM PERSHOTT BUSHES, BUSHES COATED IN 1/8" BUMPING
120MM X 10MM KØNENKØL, KØNENKØL HEDTØLLER

**SCOOTER ASSEMBLY / MONTAGE DES ROLLERS / MONTAJE DEL PATINETE /
MONTAGE DU SCOOTER / MONTERING AV SPARKESKYKELEN / MONTERA SPARKYKKELEN**

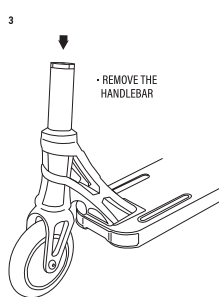


• SLIDE HANDLEBAR
ONTO FORK

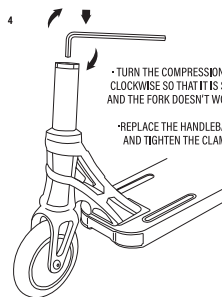


• TIGHTEN CLAMP BOLTS
ALTERNATING BACK
AND FORTH BETWEEN
THE TWO BOLTS
UNTIL COMPLETELY TIGHT

**COMPRESSION MAINTENANCE / MAINTENANCE DE COMPRESSION / MANTENIMENTO DE COMPRESION /
WARTUNG DER KOMPRESSION / VEDLØKHOVD AV KOMPRESION / UNDERHALL AV KOMPRESSERING**



• REMOVE THE
HANDLEBAR



• TURN THE COMPRESSION CAP
CLOCKWISE SO THAT IT'S SNUG
AND THE FORK DOESN'T WOBBLE
• REPLACE THE HANDLEBARS
AND TIGHTEN THE CLAMP

1	150MM TPR SWIRLS FLANGELESS GRIND GRIPS	2	18" X 22" H ONE PIECE LOW RISER CHROMOLY BAR
3	MFX.X2 COBRA ALLOY DOUBLE CLAMP	4	MFX INTEGRATED / IHC HEADSET
5	THREADLESS CAST STEEL IHC FORK	6	V2 COMPOSITE BLITZ BRAKE
7	ANODIZED M6X 4.5" W X 18" L INTEGRATED ROUNDED BOX DECK WITH INTERNAL FLUTING	8	10MM NYLON HOLOGRAPHIC CORE WHEELS WITH 2-TONE MSP PROPRIETARY PU BLEND & ABC-9 BEARINGS

FAILURE TO TIGHTEN OR INSTALL PROPERLY MAY CAUSE LOSS OF CONTROL AND A FALL. FAILURE TO UNDERSTAND INSTRUCTIONS OR CONCEPT OF TIGHTEN SECURELY SEE ASSEMBLING OF A QUALIFIED MECHANIC.
NICHT ORDNUNGSGEMÄßES FESTZUGEN ODER FALSCHERHAFTE MONTAGE KÖNNEN ZUM VERLUST DER KONTROLLE ODER GAS GERÄT UND ZU STÜRZEN FÜHREN. WENN SIE DIE MONTAGEANLEITUNG NICHT VERSTEHEN ODER NICHT IN DER LAGE SIND, DEN ROLLER SICHER ZU MONTIEREN, SOLLTEN SIE DIE HILFE EINER QUALIFIZIERTEN MECHANIKERS IN ANSPRUCH NEHMEN.
LA FALTA DE SUCESIÓN O INSTALACIÓN CORRECTA PUEDE CAUSAR PÉRDIDAS DE CONTROL Y CAÍDA. EN CASO DE QUE NO ENTENDAS LAS INSTRUCCIONES O EL CONCEPTO DE APRETAR FIRMEMENTE, SOLICITA LA AYUDA DE UN MECÁNICO PROFESIONAL.

UN MAUVAIS SERRAGE OU UNE MAUVAISE INSTALLATION PEUT ENTRAÎNER UNE PÉRIE DE CONTRÔLE ET UNE CHÛTE. SI VOUS NE PARVENEZ PAS À BIEN SERRER, DEMANDEZ L'AIDE D'UN MÉCANICIEN QUALIFIÉ.
HVIS BOKSTENE IKKE SETTES INN ELLER STRAMMES RÆTTE KAN DET FØRE TIL AT DØMSTER KONTROLLEN ODER SPARKESKYKELENS OLF FALLER. HVIS DU IKKE FORSTÅR INSTRUKTIONEN ELLER KONSEPTET OM SIKKER STRAMMING, TA TILBUDT MED EN KVALIFISERT MEKANISER.
OMNITE SPARKYKKELEN MONTERAS KORREKT ELLER OM SIKKERHETEN KAN DET LEVA TILL ATT MAN FÖRLORAR KONTROLLEN ÖVER CYKEL ELLER FALLER. OM MAN INTE FÖRSTÅR INSTRUKTIONERNA ELLER FÖRBEREDELSEN FÖR SÄKER MONTERING BÖRMAN VÄNDA SIG TILL EN TVEYKVALIFISERAD ELLER LÖSNING.

MADD GEAR AUSTRALIA
12/35 GARDEN RD, CLAYTON, VIC 3168, AUSTRALIA
MAIL: SALES@MADDCAR.COM

MIG DISTRIBUTORS LIMITED INC
147 CAPTAIN SPERRINS RD, ONEHANGA, AUCKLAND 1061
MAIL: SALES@MADDCAR.COM

MADD GEAR UK & IRELAND
DISTRIBUTED BY **J&B SPORTS LIMITED**
VESTY BUSINESS PARK, 4 BEEFIE, MESSINGHAM, L30 1WY, UK
MAIL: SALES@MADDCAR.COM
CUSTOMER SERVICE: UKSUPPORT@MADDCAR.COM

MADD GEAR LLC USA
5780 WEST OAKLAND STREET, CHANDLER, ARIZONA 85226
MAIL: SALES@MADDCAR.COM
CUSTOMER SERVICE - CANADA
EMAIL: CANADASUPPORT@MADDCAR.COM

MADD EUROPE GMBH
DISTRIBUTED BY **SKATE-IT SPORTS PRODUCTION GMBH**
MAX-ROSE-STRASSE 2, 81773 HEIMING, GERMANY
MAIL: SALES@MADDCAR.COM
CUSTOMER SERVICE: SERVICE@SKATE-IT.COM

DISTRIBUTED BY MEGARON GROUP (RUSSIA)
1171449, MOSKVA FEDERATION, MOSCOW, KARBEN STREET, 2-4
MAIL: OFF@MEGARON.RU
WWW.MEGARON.COM

CHECK US OUT ON WWW.MADDCAR.COM OR AT OUR SOCIAL MEDIA PAGES ON FACEBOOK, TWITTER, INSTAGRAM OR YOUTUBE

FACEBOOK: WWW.FACEBOOK.COM/MADDCAR.MSP
TWITTER: WWW.TWITTER.COM/MEGACONSPORTS

INSTAGRAM: WWW.INSTAGRAM.COM/M2_ACTEONSPORTS
YOUTUBE: WWW.YOUTUBE.COM/USA.MADDCARSPORTS