

sun's
LIFESTYLE

SUN'S LIFESTYLE

PARTNERS



CONTENTS

Welcome to Suns Lifestyle.....	03
Our Pergola.....	04
Not all Pergolas are the Same.....	05
It's all in the Detail.....	06
The Finishing Touches.....	08
Maranza Louvered Pergola.....	09
Rota Louvered Pergola.....	12
Model Overview.....	16
Installation.....	17
Our Pergola Promise.....	18

WELCOME TO SUNS LIFESTYLE

Suns Lifestyle are the perfect luxury outdoor living partner for your business. If you're looking to make the most of the outdoor spaces while keeping your customers comfortable in all seasons.

We work with trusted partners and businesses on a wealth of trade and commercial projects. If you'd like to get in touch to talk about how we can support your project, then we'd love to hear from you.



OUR PERGOLAS



Our signature product. Across the market, taken at face value they can look very similar. So how 'good' can a pergola be?

All of our pergolas are made from 100% high quality rust-resistant aluminium, they come in a range of sizes and heights to offer a range of solutions for garden projects. The components of our pergolas are often heavier than others because of the aluminium grade and density.

NOT ALL PERGOLAS ARE THE SAME

These functional and ready-to-use terrace-coverings are an excellent way of enhancing your outdoor space for all-year round use. The Suns Lifestyle collection of aluminium pergolas are available in a range of sizes and configurations to create a distinct and contemporary look.

The key feature in the pergolas unique design is the roof louvers, the manual winding mechanisms allow you to control the direction of the roof louvers creating an open or closed space. The genius built-in drainage system means that if the weather changes, just close the louvered roof to make the area weatherproof, rainwater that lands on the louvers will flow into the guttering channels and drain inside the legs to the ground.

Flexible side options offer more shelter, shade and comfort giving an all-season weatherproof area.



MULTIPLE SIZES AVAILABLE

Including flexible features which can be adapted to your space



UV & WATER-RESISTANT

For sun safe, dry outdoor enjoyment



WEATHERPROOF ROOF

For enjoyment all year round



100% ALUMINIUM

Rust-resistant, easy-to-clean and low maintenance



MULTIPLE SCREEN OPTIONS

Including a 2-year warranty on all screens & side panels



5-YEAR WARRANTY

On all pergolas



ZIP-LOCK FUNCTION

Zip-lock and stop tension system for customised shade or shelter



SEAMLESS & FULLY RETRACTABLE

Seamless zip-lock function that sits between pergola legs



SHADE, SHELTER & PRIVACY

Double layered durable, heat sealed Textilene fabric



SMART DRAINAGE SYSTEM

Built in gutter system to drain away rain water

IT'S ALL IN THE DETAIL

WHY CHOOSE A SUNS LIFESTYLE PERGOLA?

All of our pergolas are made from high quality 100% rust-resistant aluminium, they come in a range of sizes and heights to offer solutions for every garden project. The components of our pergolas are often heavier than others because of the aluminium grade and density. This is why we offer a professional nationwide installation service for our outdoor structures, ensuring each one is safely constructed, with all screen components working and fixed securely to your foundations to withstand the elements for year-round enjoyment.

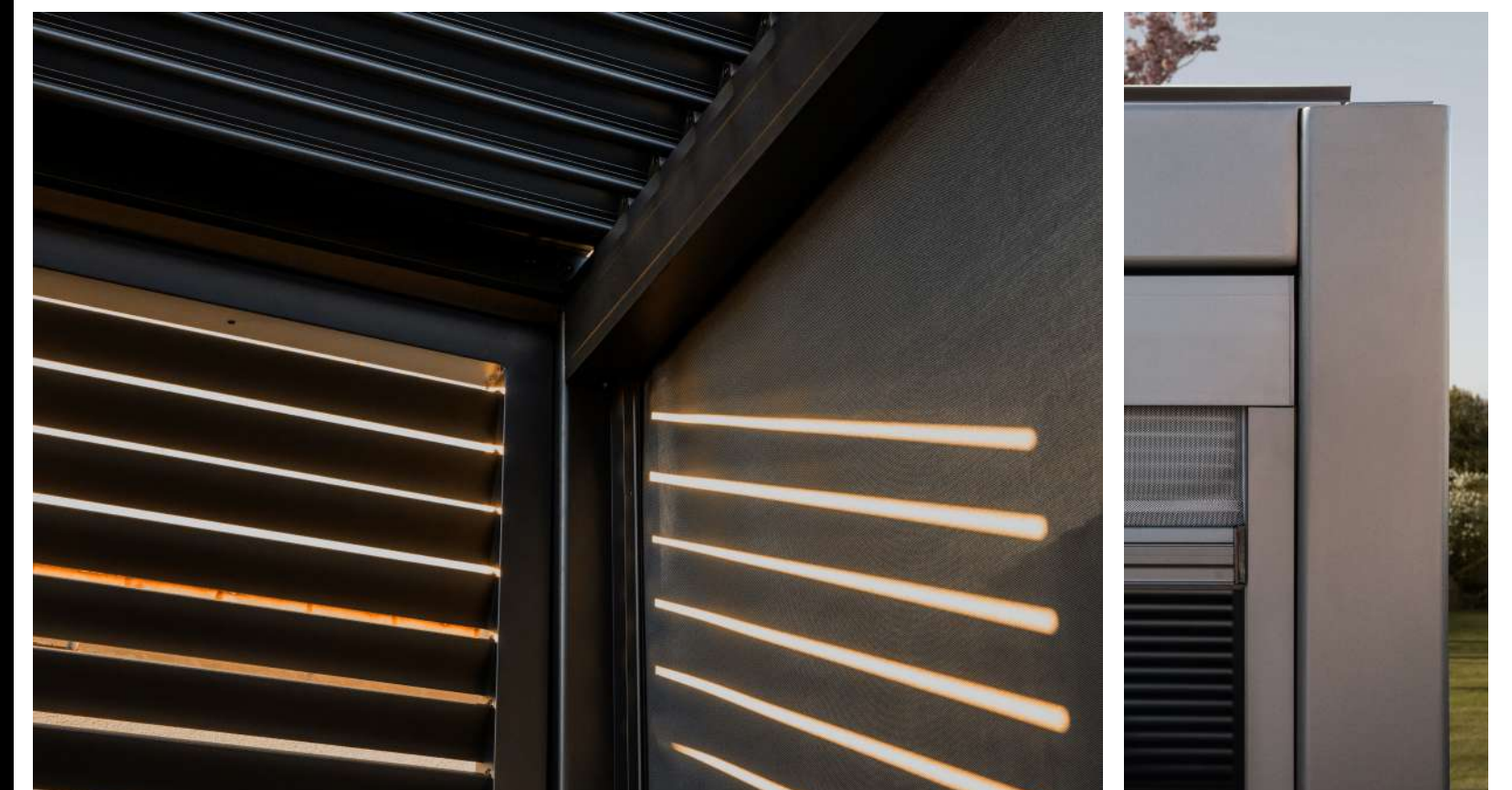
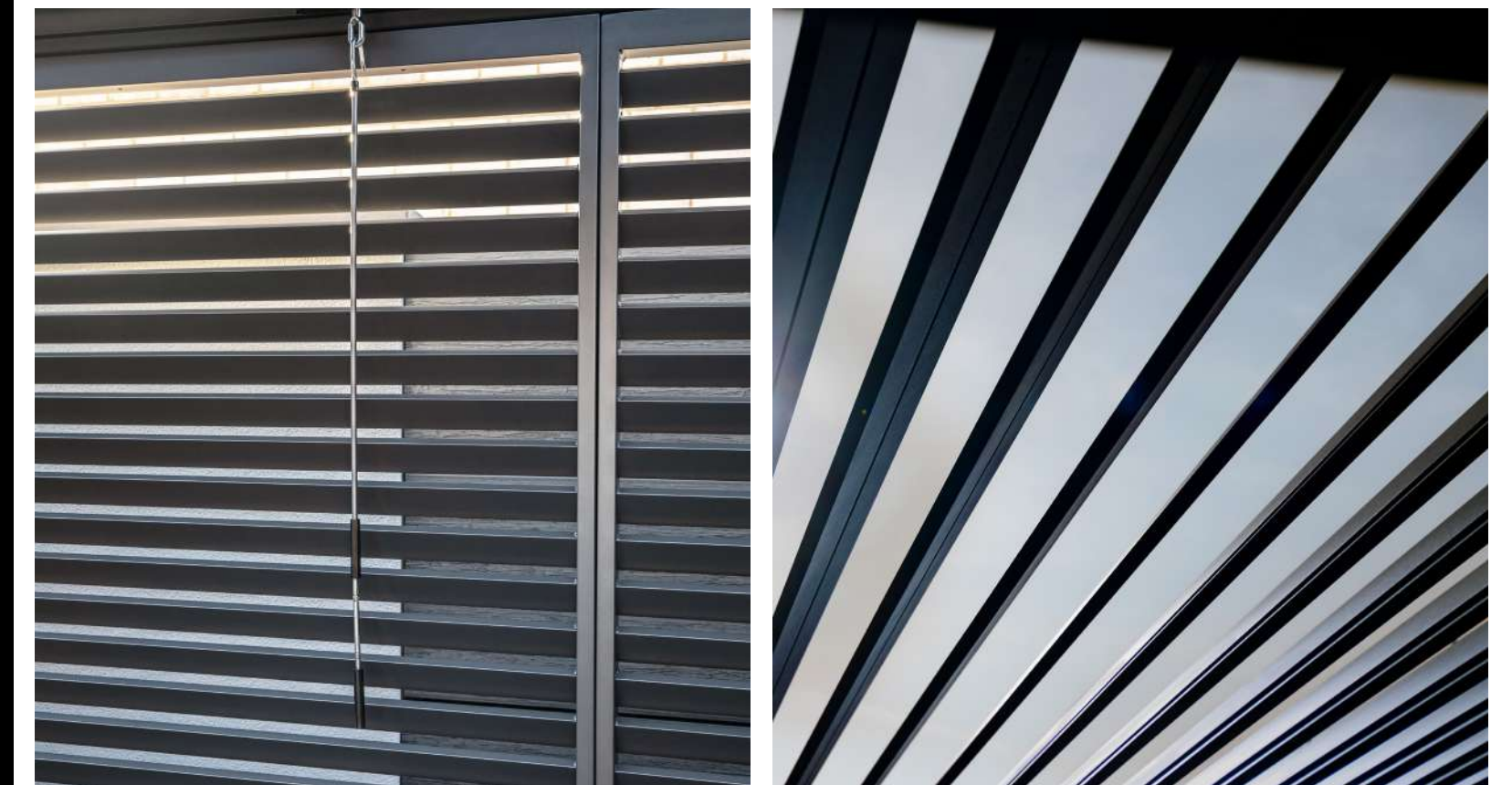
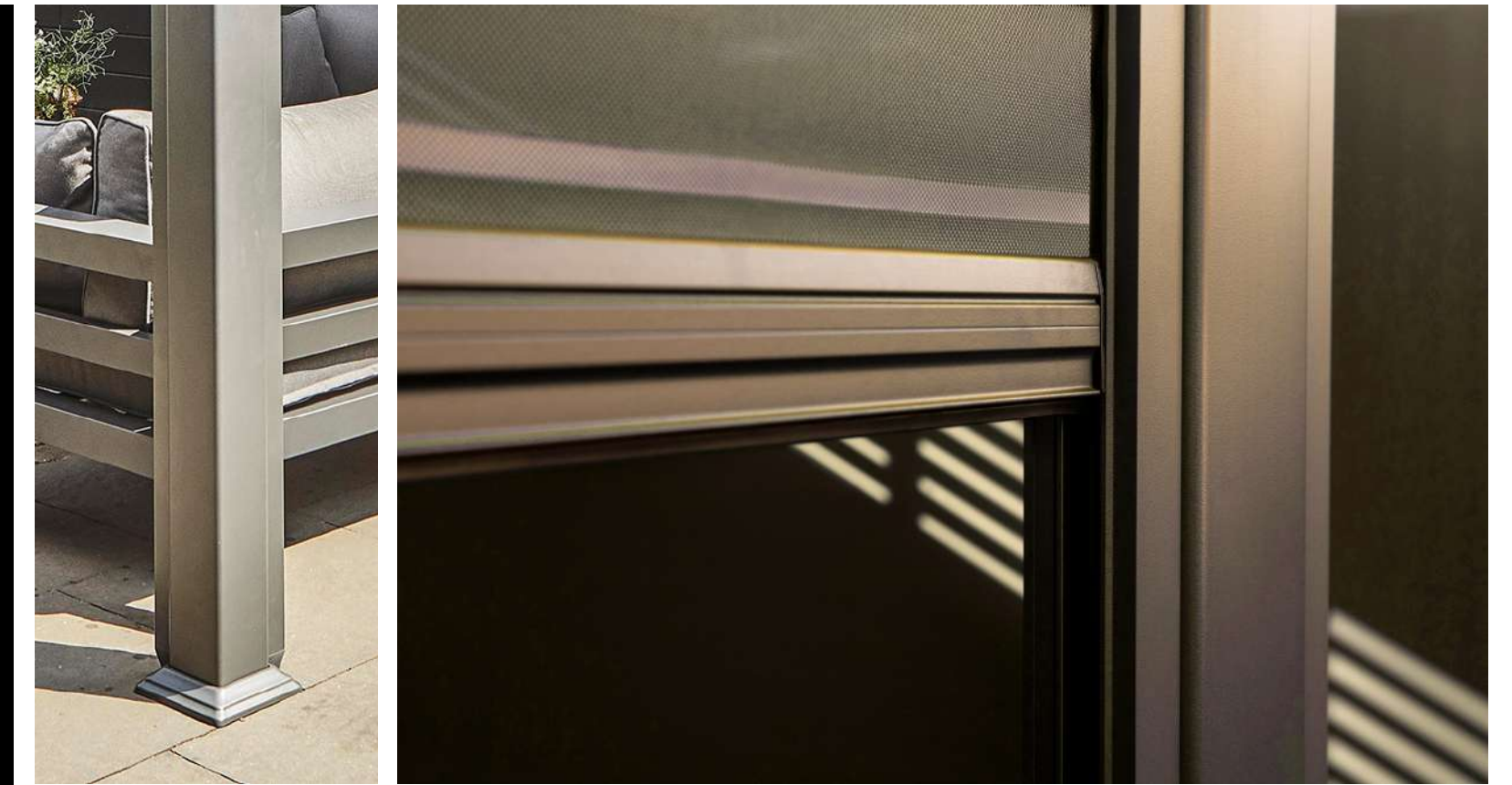
OPTIONAL SIDES

When it comes to shade and shelter, no pergola is complete without screens. We offer innovative, weatherproof Deluxe screens on our popular Maranza, Rota and Alvaro pergolas. Designed for life outdoors, our Deluxe screens are made from an innovative, weighted UV, fade-resistant fabric, they zip-lock to the side of the leg for robust protection from the wind and rain on all sides.

You won't find any fiddly winders or rods on our screens either, instead our Deluxe screens have in-built tension so you can stop them at any point for protection to suit you, or retract fully into their cassettes for a seamless finish when you want to enjoy the sun.

LOUVERED MECHANISM

Most of our pergolas are manual louvered models, we do offer electric retractable options but for polished, contemporary good looks (and amazing value for the quality) we don't think you can beat the streamlined finish on a manual louvered pergola. The winding mechanism for the roof blades is neatly concealed to one side and a clever hidden drainage system that carries rainwater off the roof, into channels and down inside the legs. It's worth noting that the roof blades on all of our pergolas are double layered meaning they can withstand higher rainfall versus single skin options found elsewhere.



OUR SCREENS

Made from double-layered Textilene, we're really proud of our weatherproof screens.

Held in cassettes that fit seamlessly into the pergola frame, they slide down tracks in the legs to give you shade, shelter or sun whenever you want or need it.

You won't find any brackets to hold them or gaps along the edge.

With a ziplock function that anchors into the base of the leg, our robust screens are an excellent investment for those bringing the indoors out.

The robust fabric is water-repellent, fade and mould-resistant making our screens durable and easy to clean.



BRING THE INSIDE OUT

Our louvered aluminium pergolas are available as both freestanding and wall-mounted options. Ideal when you want to seamlessly transition from inside to outside.

When fixing to the external wall, often we can remove the middle leg to accommodate bifold doors. Having a pergola over bifolds can really reduce heat transfer and glare, often making it a more attractive and practical alternative to blinds.

Our in-house installation teams are experts when it comes to the orientation and positioning of our pergolas, so any questions they'll be happy to advise.

THE FINISHING TOUCHES

—

We're sticklers for detail, it truly sets our products apart. Combining reliable design with ease of function, our pergolas come with footplates to cover unsightly bolts when drilled to the surface and double-skinned roof blades to keep the pergola weatherproof.

We work with robust, industrial grade aluminium which is why you'll find that the component parts might be heavier than other models in market.

At Suns Lifestyle we confidently fulfil all of the above, our installation service is tried and tested with over 4800 happy customers and we're used to working with our customers on the best solution for their outdoor space.

When shopping around, here's our pre pergola checklist:

- ✓ Can the company offer guidance on foundations?
- ✓ Can the company provide floorplans for leg placement and orientation?
- ✓ Check the company you're purchasing from can install for you.
- ✓ Do they have an in-house installation team (not delivery drivers)
- ✓ Does the company have customer images of jobs they've installed already?
- ✓ Does the company have insurance to install your pergola properly?
- ✓ Will they bolt down for you? This is vital for a secure structure.
- ✓ Does the company physically stock the product?
- ✓ Does the company have first hand product knowledge?
- ✓ Is the company based in the UK?



MARANZA

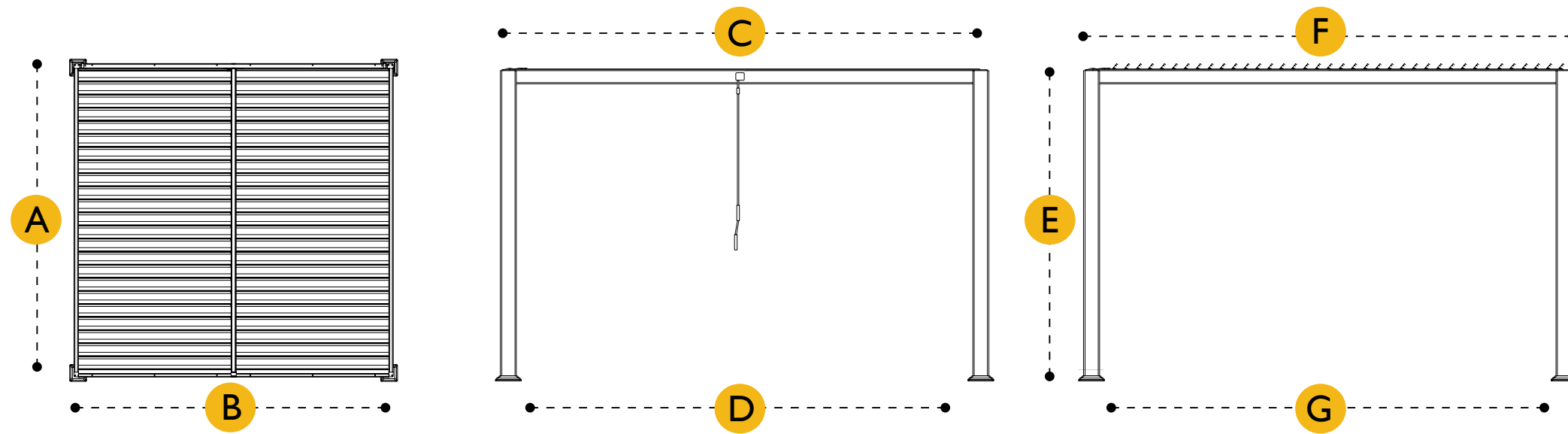
LOUVERED PERGOLA

Create your perfect outdoor retreat with the Maranza Louvered Pergola – perhaps an al fresco space to entertain, a cosy area for a corner sofa or a cover for your hot tub. Ideally suited as a freestanding structure offering a 4-sided solution to your outdoor living space.

Available in:



MARANZA LOUVERED PERGOLA



4 LEG MODELS	3.0 x 3.0	3.0 x 3.6	3.5 x 3.6
A Width	3.01	3.01	3.53
B Length	3.00	3.60	3.60
C Footplate to footplate length	3.07	3.67	3.67
D Inside footplate length	2.89	3.49	3.49
E Height	2.29	2.29	2.29
F Footplate to footplate width	3.09	3.09	3.60
G Inside footplate width	2.89	2.89	3.41

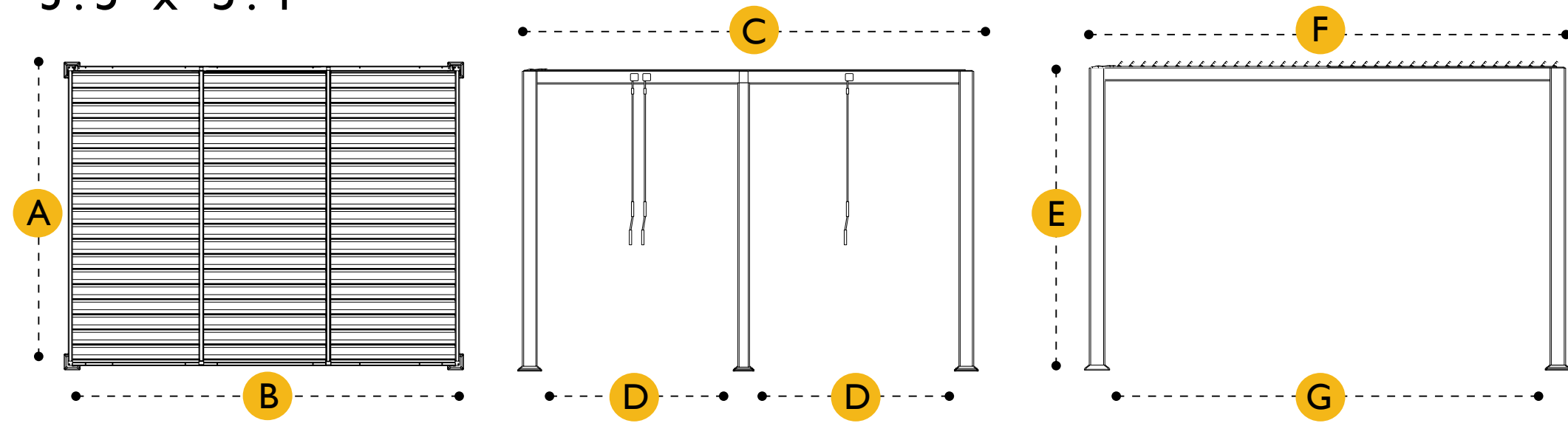
FIXED SPECIFICATIONS

Height	2.29
Louver fully open	2.34
Legs	0.11 x 0.11
Footplate	0.19 x 0.19
Under roof beam	2.16

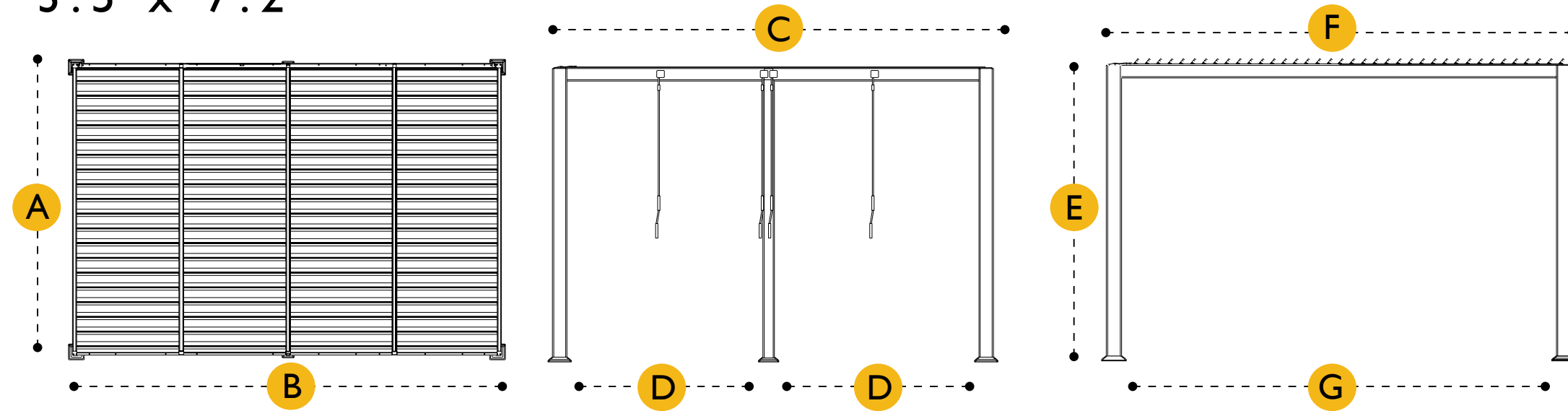
WHY CHOOSE THE MARANZA?

Best suited as a freestanding structure, the manual louvered roof shutters create a perfect oasis outdoors for socialising and relaxing, the Maranza Deluxe Louvered Pergola offers features that can adapt to any weather, so you can make the most of the outdoors all year round. The manual louvered roof shutters allows you to either sit in the sun or the shade then the addition of the Deluxe Screens means your outdoor area is protected from the wind and rain. Each roof section operates independently offering flexibility to let the sun in across the whole roof or just each section.

3.5 x 5.4



3.5 x 7.2



6 LEG MODELS

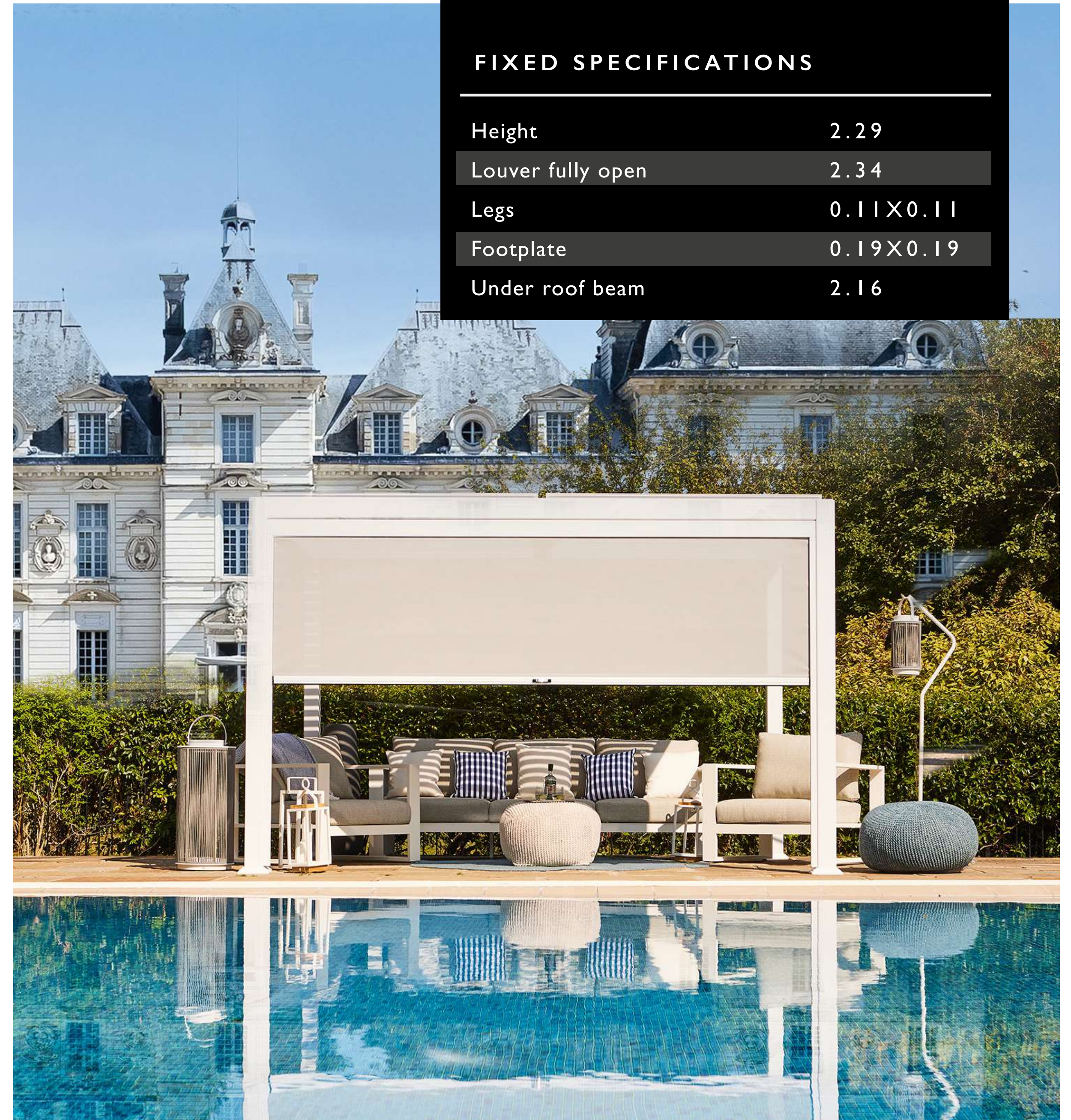
3.5 x 5.4

3.5 x 7.2

A	Width	3.53	3.53
B	Length	5.36	7.13
C	Footplate to footplate length	5.44	7.21
D	Inside footplate length	2.51	3.39
E	Height	2.29	2.29
F	Footplate to footplate width	3.60	3.60
G	Inside footplate width	3.41	3.41

FIXED SPECIFICATIONS

Height	2.29
Louver fully open	2.34
Legs	0.11 x 0.11
Footplate	0.19 x 0.19
Under roof beam	2.16



ROTA

The Rota stands 20cm taller than the Maranza which makes it a perfect overhang above bi-fold doors. The construction of an outdoor terraced area is no longer a complicated building project, this is a smart solution with a long lifespan. The manual louvers open fully vertically on the Rota and they conveniently move as one system on the 4-leg models, or dual on 6-leg models for bespoke shade and shelter.

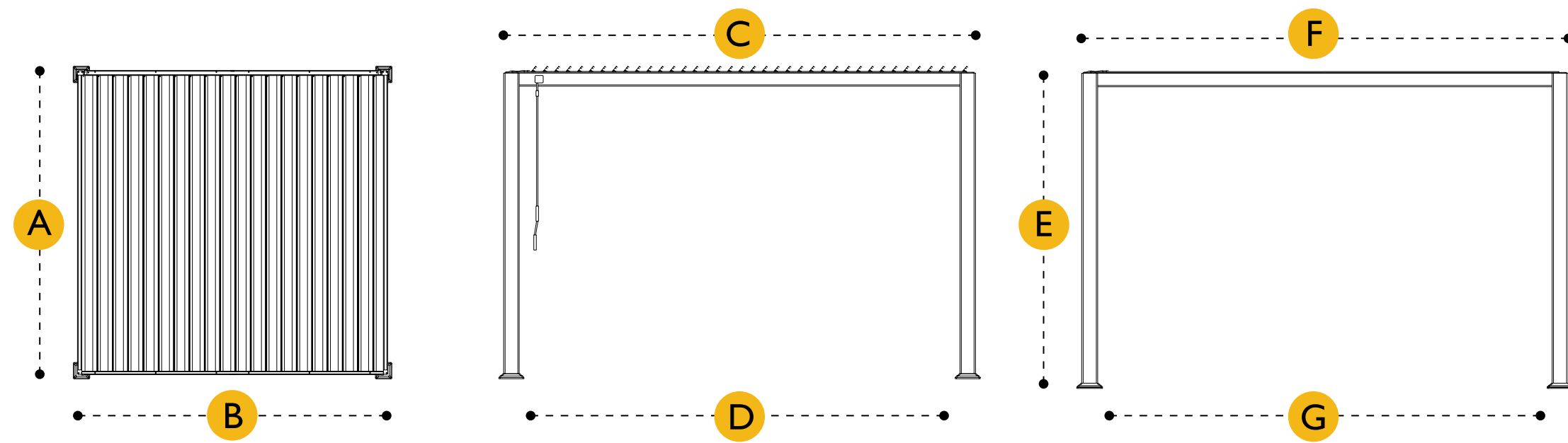
Available in:



LOUVERED
PERGOLA



ROTA LOUVERED PERGOLA



4 LEG MODELS	3.0 x 3.0	3.0 x 3.6	3.0 x 4.0	3.6 x 3.6	3.6 x 4.0
A Width	3.01	3.01	3.01	3.62	3.62
B Length	3.01	3.62	3.93	3.62	3.94
C Footplate to footplate length	3.07	3.69	3.99	3.69	3.99
D Inside footplate length	2.79	3.42	3.70	3.42	3.70
E Height	2.51	2.51	2.51	2.51	2.51
F Footplate to footplate width	3.07	3.07	3.07	3.69	3.67
G Inside footplate width	2.79	2.79	2.79	3.42	3.42

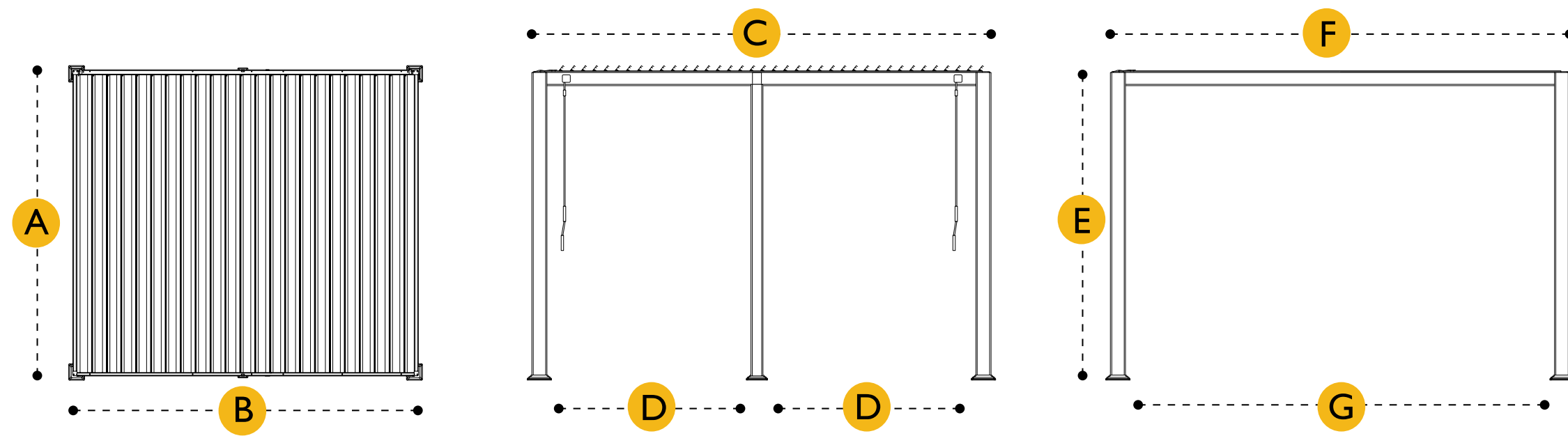
FIXED SPECIFICATIONS

Height	2.51
Louver fully open	2.57
Legs	0.11x0.11
Footplate	0.19x0.19
Under roof beam	2.35

WHY CHOOSE THE ROTA?

The Rota stands 20cm taller than the Maranza, this pergola comfortably sits above external windows and doors. With the option to wall-mount and remove the middle legs, the Rota seamlessly connects your outdoor space whilst maximising visibility and light from the indoors out. Also suitable as a freestanding structure, the Rota pergola offers seasonal shade and shelter for your outdoor project.

ROTA LOUVERED PERGOLA



6 LEG MODELS		3.0 x 6.0	3.6 x 5.3	3.6 x 6.0	3.6 x 7.2
A	Width	3.01	3.62	3.62	3.62
B	Length	5.91	5.28	5.91	7.13
C	Footplate to footplate length	5.98	5.37	5.98	7.20
D	Inside footplate length	2.72	2.42	2.72	3.33
E	Height	2.51	2.51	2.51	2.51
F	Footplate to footplate width	3.07	3.69	3.69	3.69
G	Inside footplate width	2.79	3.42	3.42	3.42

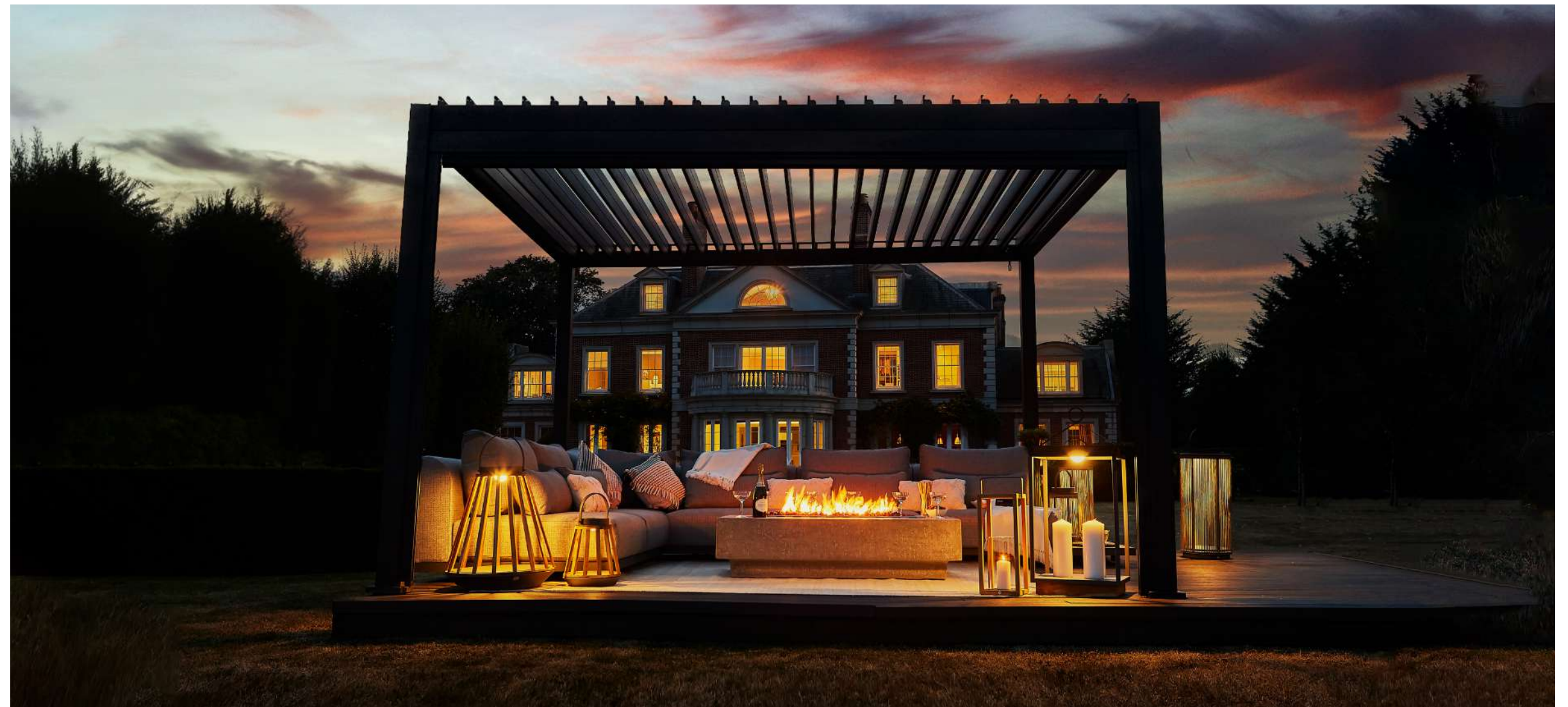
FIXED SPECIFICATIONS

Height	2.51
Louver fully open	2.57
Legs	0.11X0.11
Footplate	0.19X0.19
Under roof beam	2.35



MODEL OVERVIEW

PERGOLA	SIZE (M)	NO. OF LEGS	HEIGHT (M)	SUN SCREENS	DELUXE SCREENS Optional Extra	VENTED PANELS Optional Extra	SOLID PANELS Optional Extra	FREE STANDING	WALL MOUNT	LOUVER DIRECTION	DRAINAGE LOCATION	REMOVE MIDDLE LEG Models with 6 legs or more	NO. OF ROOF SETIONS
MARANZA LOUVERED PERGOLA All available in: 	3.0 x 3.0	4 LEGS	2.3 Height can be reduced*	✗	✓	✗	✓	✓	6 leg models can remove middle leg for flush wall mounted fit**	LENGTHWAYS	CORNER LEGS	✓ Replace middle leg with a wall bracket*	4 LEGS — 2 3.5 x 5.4 — 3 3.5 x 7.2 — 4
	3.0 x 3.6	4 LEGS											
	3.5 x 3.6	4 LEGS											
	3.5 x 5.4	6 LEGS											
	3.5 x 7.2	6 LEGS											
ROTA LOUVERED PERGOLA	3.0 x 3.0	4 LEGS	2.5 Height can be reduced*	✗	✓	✗	✗	✓	All models can remove middle and corner legs for flush wall mounted fit**	WIDTHWAYS	ALL LEGS	✓ Replace middle leg with a wall bracket*	4 LEGS — 1 6 LEGS — 2
	3.0 x 3.6	4 LEGS											
	3.0 x 4.0	4 LEGS											
	3.6 x 3.6	4 LEGS											
	3.6 x 4.0	4 LEGS											
	3.0 x 6.0	6 LEGS											
	3.6 x 5.3	6 LEGS											
	3.6 x 6.0	6 LEGS											
	3.6 x 7.2	6 LEGS											



*Subject to additional costs **Removing legs limits screen options



INSTALLATION

Installation by our trained team includes the delivery, assembly and bolting down of the pergola, including any screens & louvered panels. Lead times for installation ranges from 4-10 weeks (subject to availability), and we provide nationwide installs. Please get in touch to check current lead times. Once you've placed your order online, we'll make contact to book a convenient date to install your pergola. By selecting and paying for our installation service you are agreeing to the pre-installation guide detailed below. If anything in the guide is not adhered to, it may incur an additional fee for our team to return.

Please take care to ensure you have measured the area correctly and have a flat surface with a 1:80 fall (which, by building regulations your patio should already have). For anything more than this, we would need prior notification, as it means we would need to fit the pergola with packers. By using our installation service you are agreeing to our team using packers under the footplates in such instances.

Modifications such as lowering the height of the structure can be achieved, this service is great for areas which cover different levels, steps and walls and is available with an additional fee.

Our team are trained to fix to the following surfaces: Postcrete, paving slabs, wood decking, composite decking and porcelain tiles.

OUR PERGOLA PROMISE

Suns Lifestyle offers a reassuring warranty that stretches beyond legislation – with all pergolas having a 5-year warranty. If a part should defect due to a manufacturing fault or fail due to regular domestic use, Suns Lifestyle will either repair the defect at discretion, refinish the product or replace the defective part.



