

Don't hold your breath

Reduce your exposure to resin printing fumes effectively



1

Print preparation

- plan prints for when you're away
- use water washable resins if suitable

PPE: gloves, mask/respirator, goggles, long sleeves

3D printing

- keep windows open
- turn on ventilation / air filter system
- inform others that printing is in progress
- keep away from the printing area

PPE: only required if irritation occurs

2



3

Retrieving the print

- allow time for the print space to air out
- check air quality monitor
- take special care when opening printer

PPE: gloves, mask/respirator, goggles, long sleeves



Post-washing

- use less harsh solvents if possible
- keep away from the washing apparatus while in operation

PPE: gloves, mask/respirator, goggles

4

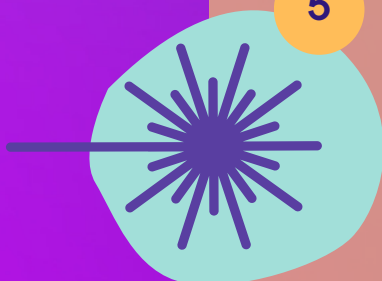


5

Post-curing

- keep away from the curing apparatus while in operation

PPE: gloves, mask/respirator



Storage

- do not leave unused resin in the vat
- do not leave resin bottles open
- use a resin vat cover if available

PPE: not required

6



Learn more about risks and prevention at yt3dp.com/fumes.

Yes, That's 3D Printed