

CALL FUNCTIONS

- Answer Call:** Short press "MFB" to answer an incoming call
- End Call:** Short press "MFB" to hang up the call
- Reject Call:** Long press "MFB" for 1 sec to reject incoming calls
- Mic Mute/Unmute:** Short press the Mute Microphone Button

GENERAL FUNCTIONS

Power

- Power On:** Toggle Power button to "On" position.
- Power Off:** Toggle Power button to "Off" position.

Connectivity

- Clear Pairing:** While headset is charging, press and hold the Vol + and Vol - buttons at the same time.

Playback

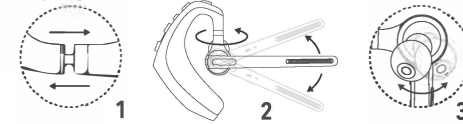
- Play/Pause:** Press "MFB"
- Previous Track:** Long press "Vol +"
- Next Track:** Long press "Vol -"

Volume Control

- Raise Volume:** Short press "Vol +"
- Lower Volume:** Short press "Vol -"

WEAR ON THE LEFT OR RIGHT

To wear the headset on your other ear, rotate the boom upwards then twist it around so the eartip is on the other side before lowering the boom. Rotate the eartip and adjust the retractable earhook to fit the shape of your ear.



LED INDICATOR

Headset LED	
Power On:	Blue LED will flash once
Power Off:	Red LED will flash once
Pairing Mode:	Blue/Red LED will alternate
Low Battery:	Red LED will blink repeatedly
Charging:	Red LED steady on
Charging Complete:	LED off

Case LED	
Low Battery:	1 White Steady LED
Charging:	White LED blinking
Charging Complete	4 White Steady LEDs

SAFETY INSTRUCTION

- Do not place headset near naked flames such as candles, near high heat sources such as oven, or in direct sun light.
- Press buttons gently. Hard presses may shorten lifetime of product.
- Do not drop on hard surface.
- Keep away from appliances that generate strong magnetic fields to avoid signal disruptions. If headset or receiver are affected by signal disruption, turn off and back on again to reset.
- Keep away from children. Eating this product may cause injury or death.
- PRODUCT CONTAINS A LITHIUM ION BATTERY.
- Do not open or disassemble this product.
- Keep product away from liquids.

WARRANTY

Delton warrants this product against defects in material and/or workmanship under normal use. To view our warranty policy or to submit a claim, please visit <https://deltonstudio.com/pages/warranty>

LEGAL WARRANTY

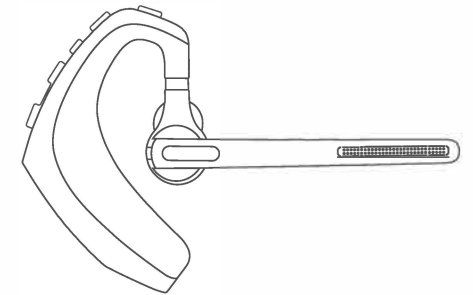
The period of guarantee and any other conditions relating to it, is governed by the legislation of the country where the product was purchased



Register your product at
deltonstudio.com



95X EXECUTIVE HEADSET



USER MANUAL

THANK YOU FOR PURCHASING THE DELTON 95X EXECUTIVE HEADSET

Please take a moment to read this user manual thoroughly, and keep it for future reference. This manual explains the features and functions of this product.

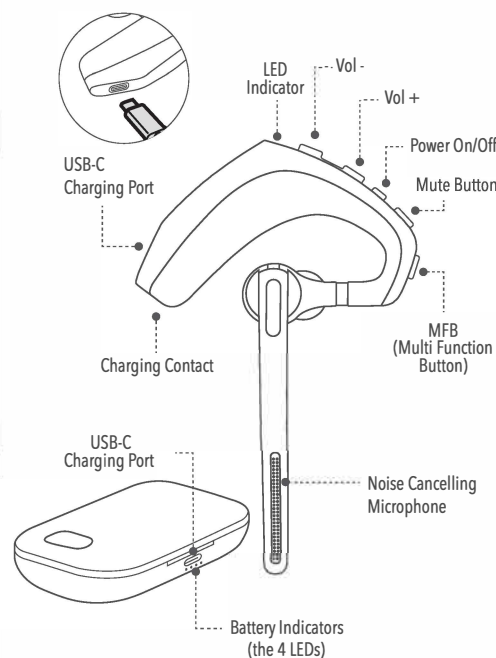
SPECIFICATIONS

BT Version:	5.0
Operation Range:	30 Ft
Headset Talk Time:	Up to 14Hrs
Case Capacity:	Up to 60 Hrs
Charging Time:	Less than 2Hrs
Stand-by Time:	Up to 240 Hrs
Charging Port:	Type-C

WHAT'S IN THE BOX?

- Wireless Headset
- Multi-Size Ear Gels
- Charging Case
- USB-C Charging Cable
- Auto-Pair USB Dongle
- User Manual

PRODUCT DIAGRAM



PAIRING WITHOUT USB DONGLE

NOTE: Before first time use charge your headset for at least 3 hours

- While headset is off, toggle the Power button to the ON position. Headset will automatically enter into pairing mode.
 - If headset does not automatically enter pairing mode, plug it in to enter charging state, then press and hold the Volume + and Volume - buttons at the same time to clear any existing pairing and start again with the above instruction.
- Navigate to your device's Bluetooth Settings menu to search for nearby Bluetooth accessories.
- Find the "Delton 95X" and click it to initiate pairing.
- Wait up to 30s and your device will show that the headset is paired.

PAIRING WITH USB DONGLE

NOTE: Before first time use charge your headset for at least 3 hours

- While headset is off, plug the USB dongle into your PC/laptop.
- Toggle the Power button to the ON position. Headset will automatically enter into pairing mode.
 - If headset does not automatically enter pairing mode, plug it in to enter charging state, then press and hold the Volume + and Volume - buttons at the same time to clear any existing pairing and start again with the above instruction.
- Wait up to 30s and your device will show that the headset is paired.

CHARGING THE HEADSET

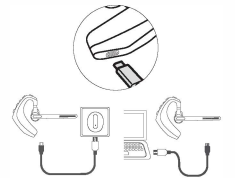
Step 1: Connect the USB-A connector of your charging cable (included) to a PC/laptop or a USB power adapter (not included).

Two Ways to Charge

1. Charge Headset Directly

Step 2: Connect the USB-C connector of your charging cable to the headset. The headset LED will light up solid red while headset is charging.

Step 3: The headset LED turns off when headset is fully charged. Remove the charging cable.



2. Charge Case (and Headset)

Step 2: Connect the USB-C connector of your charging cable to the case. The case LED will blink a white color while case (and headset) are charging.

Step 3: All 4 case LEDs will shine a steady white when the case (and headset) is fully charged. Remove the charging cable.

