

Woltman Dynamic Turbine Meter

Product Codes

WM50DT	Dynamic Turbine Water Meter 50mm
WM65DT	Dynamic Turbine Water Meter 65mm
WM80DT	Dynamic Turbine Water Meter 80mm
WM100DT	Dynamic Turbine Water Meter 100mm
WM150DT	Dynamic Turbine Water Meter 150mm

Operation

Woltman meters measure the velocity of the water flowing through with the help of a turbine. The volume is mechanically calculated, through the known volume of the measuring chamber, and indicated with the roller counters in cubic meter

Features

- Fit for big water flow
- Low starting flow
- Stable and high accuracy
- Low pressure loss
- Epoxy coated cast iron body
- Pulse Unit (Reed switch) for remote readout systems
- Long working life
- Fit for hard water
- Types: horizontal, vertical and removable
- For horizontal, vertical and inclined installation positions
- The meters conform to ISO4064 Standard
- Hermetically sealed register (IP68)
- Hydrodynamically balanced system
- High overload capability
- Pattern approved removable measuring element
- Powder coating affords max. corrosion protection
- Not affected by external magnetic fields



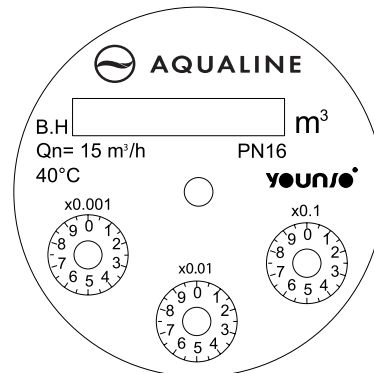
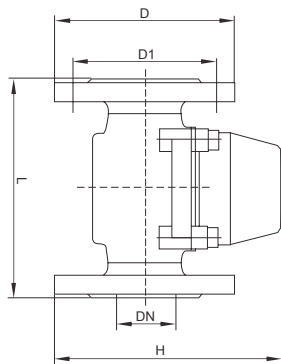
Working Conditions

- Water temperature $\leq 50^{\circ}\text{C}$ (Hot water meter $\leq 90^{\circ}\text{C}$)
- Water pressure $\leq 1\text{MPa}$ (PN: 1.6MPa/16bar)
- $\Delta P \leq 0.03\text{MPa}$

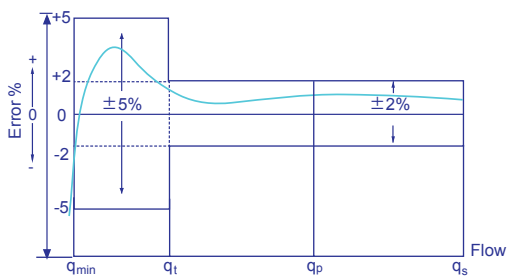
Accuracy

- From minimum flow-rate (q1) inclusive, to transitional flow-rate (q2), exclusive: $\pm 5\%$
- From transitional flow-rate (q2) inclusive, to overload flow-rate (q4), exclusive: $\pm 2\%$ (Hot water meter: $\pm 3\%$)

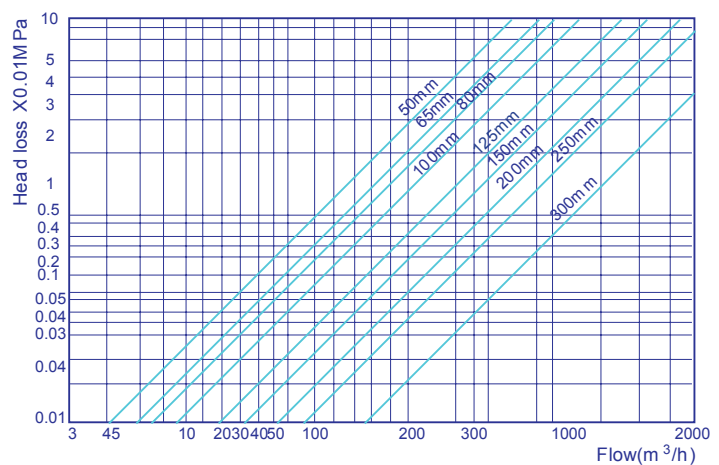
Technical Details



Error Curve



Headloss Curve



Nominal Size DN (mm)	Class of measurement	Overload flow-rate q_s (m³/h)	Permanent flow-rate q_p (m³/h)	Transitional flow-rate q_t (l/h)	Minimum flow-rate q_{min} (l/h)	Minimum reading M_{in} (m³)	Maximum reading M_{in} (m³)
50	R100	50	40	0.64	0.4	0.01	9999999
80	R100	78.75	63	1.008	0.63	0.01	9999999
100	R100	125	100	1.6	1	0.01	9999999
150	R100	300	250	4	2.5	0.1	9999999

Overall Dimensions and Weight

Product Code	Size (mm)	Length (mm) L	Width (mm) W	Height (mm) H	Outer diameter of flange D (mm)	Center diameter of connection bolt D1 (mm)	Connecting bolt (Pcs.)	Weight (kg)
WM50DT	50	200	165	200	160	125	4 x M16	19
WM80DT	80	200/225	200	245	195	160	8 x M16	26/27
WM100DT	100	250	200	245	215	180	8 x M16	29
WM150DT	150	285	285	350	285	240	8 x M20	35