

SPARTAN

DUAL PEX

SPECIFICATIONS & INSTALLATION GUIDE

DN16 - 32 Water & Gas
An all new no O'Ring design



DN40 - 50 Gas
Featuring an O'Ring design



SPARTAN

DUAL PEX

SPARTAN PEX fittings are guaranteed against manufacturing defects for a period of 50 YEARS when installed and used in accordance of the Australian and New Zealand Plumbing codes and the LOCAL or STATE Authority and when installed by a licenced PLUMBER.

SPARTAN PEX water pipes comply with the standards as set out in AS/NZS 2492:2007 Cross Linked polyethylene (PE-X) pipes for pressure applications.

SPARTAN PEX gas pipes comply with the standards as set out in AS 4176.8-2010 polyethylene/aluminium and cross-linked polyethylene/aluminium macro-composite pipe system for pressure applications.

SPARTAN PEX fittings comply to the standards AS/NZS 2537:2011 - Mechanical jointed fittings for use with cross linked polyethylene pipes (XLPE) for hot and cold applications. AS 4176.8-2010 Polyethylene/aluminium and cross-linked polyethylene/aluminium macro-composite pipe system for pressure applications.

Copper Press Adapters comply with AS3688:2016 Water Supply and gas systems - Metallic fittings and end connectors.

The Forza Global warranty only applies to installations whereby a document can be provided detailing that the installation has been pressure tested to AS/NZS 3500 and AS/NZS 5601 at completion of the installation.

Forza Global offers a 50 year warranty on SPARTAN PEX systems and is backed by a products and public liability policy to the value of AUD \$50,000,000.

The policy covers public and products liability of \$50,000,000 per Occurrence or per Occurrence and in the aggregate (as applicable), in accordance with the Policy terms and conditions.



SPARTAN

DUAL PEX



SPARTAN PEX WATER PIPE

SPARTAN PEX Water pipe is a high-quality cross-linked polyethylene consisting of an inner core of PE-Xb material with an outer layer of high-density polyethylene. Available in BLUE, BLACK and RED for potable water, GREEN for harvested rainwater and LILAC for recycled water. SPARTAN PEX Water pipe is suitable for domestic and commercial applications.

SPARTAN PEX GAS PIPE

SPARTAN GAS Pipe is multi layered incorporating a layer of aluminium between an inner layer of PE-X and an outer of PE-X. This combination gives stability while still being flexible and strong and acts as a barrier layer stopping gas migration.

SPARTAN PEX WATER MULTI LAYER PIPE

SPARTAN PEX Water Multi layer pipes provide all the benefits of a metal pipe combined with flexibility and ease of installing PE-X pipe as it is multi layered incorporating a layer of aluminium between an inner layer of PE-X and an outer layer of PE-X.

SPARTAN DUAL PEX FITTINGS

SPARTAN DUAL PEX fittings from DN16 to 32mm are suitable for both Water and Gas applications and are made of high quality DZR Brass and a 316 Stainless Steel Crimp ring. There are no O'Rings eliminating pinched or rolled O'Rings.

SPARTAN DUAL PEX fittings from DN40 to DN63 are suitable for Gas applications and are made of high quality DZR Brass and a Stainless Steel Crimp ring with a double O'Ring system.

SPARTAN WATER PIPE PACKAGING

PIPE SIZE	5M LENGTH (ALL)	COIL LENGTH (BLACK)	COIL LENGTH (RED)	COIL LENGTH (GREEN)	COIL LENGTH (LILAC)	COIL LENGTH (BLUE)
16MM	5M	50M 100M	50M 100M	50M	50M 100M	100M
16MM (PIPE IN CONDUIT)	-	50M	-	-	-	-
20MM	5M	50M 100M	50M 100M	50M	50M	100M
20MM (PIPE IN CONDUIT)	-	50M	-	-	-	-
25MM	5M	50M	-	-	-	-
32MM	5M	50M	-	-	-	-

SPARTAN PEX MULTILAYER WATER PIPE PACKAGING

PIPE SIZE	STRAIGHT LENGTH (WHITE)	COIL LENGTH (WHITE)
16MM	5M	50M
20MM	5M	50M
25MM	5M	-
32MM	5M	-

SPARTAN GAS PIPE PACKAGING

PIPE SIZE	STRAIGHT LENGTH (YELLOW)	COIL LENGTH (YELLOW)
16MM	5M	25M 50M 100M
20MM	5M	25M 50M 100M
25MM	5M	25M 50M
32MM	5M	25M 50M
40M	5M	-
50M	5M	-

SIZING TABLES FOR CRIMP FITTINGS (NATURAL GAS)

FLOW THROUGH PEX/AL/PEX COMPOSITE PIPE CRIMPED FITTINGS (MJ/H)

PRESSURE DROP 0.25KPA (METER PRESSURE 2.75KPA)

LENGTH OF STRAIGHT PIPE IN METRES

NOM. SIZE	2	4	6	8	10	12	14	16	18
16MM	161	111	89	76	68	61	56	52	49
20MM	323	222	178	153	135	122	113	105	98
25MM	629	433	348	298	264	239	220	205	192
32MM	1267	871	699	598	264	480	442	411	386
40MM	2930	1899	1474	1232	1058	480	865	799	730
50MM	5299	3573	2837	2417	2103	1899	1741	1624	1492

LENGTH OF STRAIGHT PIPE IN METRES

NOM. SIZE	20	25	30	35	40	45	50	55	60
16MM	46	41	37	34	32	30	28	26	23
20MM	93	82	75	69	64	60	57	54	51
25MM	181	161	146	134	125	117	110	105	100
32MM	364	323	293	269	250	235	222	211	201
40MM	689	598	537	479	442	411	386	359	343
50MM	1417	1248	1132	1013	950	891	846	787	752

PRESSURE DROP 0.75KPA (METER PRESSURE 2.75KPA)

LENGTH OF STRAIGHT PIPE IN METRES

NOM. SIZE	2	4	6	8	10	12	14	16	18
16MM	292	201	161	138	122	111	102	95	89
20MM	585	402	323	276	245	222	204	190	178
25MM	1142	785	630	539	478	433	398	371	348
32MM	2295	1577	1267	1084	961	871	801	745	699
40MM	5303	3438	2668	2229	1915	1717	1565	1446	1321
50MM	9591	6467	5135	4375	3806	3437	3151	2940	2701

LENGTH OF STRAIGHT PIPE IN METRES

NOM. SIZE	20	25	30	35	40	45	50	55	60
16MM	84	75	68	62	58	54	51	49	46
20MM	168	149	135	124	116	109	103	97	93
25MM	328	291	264	243	226	212	200	190	181
32MM	660	585	530	488	454	426	402	382	364
40MM	1274	1082	972	867	800	745	699	649	620
50MM	2564	2260	2049	1833	1720	745	1531	1424	1362

SIZING TABLES FOR CRIMP FITTINGS (NATURAL GAS)

FLOW THROUGH PEX/AL/PEX COMPOSITE PIPE CRIMPED FITTINGS (MJ/H)

PRESSURE DROP 1.50KPA (METER PRESSURE 2.75KPA)

LENGTH OF STRAIGHT PIPE IN METRES

NOM. SIZE	2	4	6	8	10	12	14	16	18
16MM	426	292	235	201	178	161	148	138	130
20MM	851	585	470	402	356	323	297	276	259
25MM	1661	1142	917	785	695	630	580	539	506
32MM	3339	2295	1843	1577	1398	1267	1165	1084	1017
40MM	7742	5019	3896	3255	2795	2506	2285	2112	1928
50MM	14003	9442	7497	6388	5557	5018	4600	4293	3944

LENGTH OF STRAIGHT PIPE IN METRES

NOM. SIZE	20	25	30	35	40	45	50	55	60
16MM	122	109	98	90	84	79	75	71	68
20MM	245	217	197	181	168	158	149	142	135
25MM	478	424	384	353	328	308	291	276	264
32MM	961	851	772	710	660	620	585	556	530
40MM	1820	1579	1418	1266	1168	1087	1021	948	905
50MM	3743	3299	2992	2676	2511	2354	2235	2079	1988



- **NO O’RING DESIGN FOR WATER AND GAS APPLICATIONS FROM DN16 TO 32MM ELIMINATES THE NEED FOR REAMING PIPE.**
- **SIMPLE, FAST & SECURE CRIMP**
- **ELIMINATES HOT WORK PERMITS**
- **HIGH QUALITY 316 STAINLESS STEEL RING WITH DZR BRASS BODY**
- **FAILSAFE LEAK DETECTION AS FITTING IS GUARANTEED TO LEAK UNDER INITIAL PRESSURE TEST IF CRIMP HAS NOT TAKEN PLACE**

SIZING TABLES FOR CRIMP FITTINGS (NATURAL GAS)

FLOW THROUGH PEX/AL/PEX COMPOSITE PIPE CRIMPED FITTINGS (MJ/H)

PRESSURE DROP 0.075KPA (METER PRESSURE 1.1KPA)

NOM. SIZE	LENGTH OF STRAIGHT PIPE IN METRES								
	2	4	6	8	10	12	14	16	18
16MM	84	58	46	40	35	32	29	26	23
20MM	168	116	93	80	70	64	59	55	51
25MM	328	226	181	155	138	125	115	107	100
32MM	660	454	364	312	276	250	230	214	201
40MM	1620	1064	838	700	615	553	503	467	434
50MM	2973	1942	1518	1273	1114	997	906	838	779

LENGTH OF STRAIGHT PIPE IN METRES

NOM. SIZE	LENGTH OF STRAIGHT PIPE IN METRES								
	20	25	30	35	40	45	50	55	60
16MM	21	17	14	12	11	9	8	8	7
20MM	48	43	39	35	30	27	24	22	20
25MM	95	84	76	70	65	61	58	55	52
32MM	190	168	153	140	131	123	116	110	105
40MM	408	355	320	290	270	253	236	223	211
50MM	731	637	570	519	478	447	419	395	375

PRESSURE DROP 0.12KPA (METER PRESSURE 1.25KPA)

NOM. SIZE	LENGTH OF STRAIGHT PIPE IN METRES								
	2	4	6	8	10	12	14	16	18
16MM	109	75	60	51	45	41	38	35	33
20MM	217	149	120	103	91	82	76	70	66
25MM	424	291	234	200	177	161	148	138	129
32MM	851	585	470	402	356	323	297	276	259
40MM	2090	1372	1080	903	794	713	649	602	560
50MM	3835	2505	1959	1642	1438	1286	1169	1081	1005

LENGTH OF STRAIGHT PIPE IN METRES

NOM. SIZE	LENGTH OF STRAIGHT PIPE IN METRES								
	20	25	30	35	40	45	50	55	60
16MM	31	27	22	19	17	15	13	12	11
20MM	62	55	50	46	43	40	38	35	32
25MM	122	108	98	90	84	79	74	71	67
32MM	245	217	197	181	168	158	149	142	135
40MM	527	458	413	374	349	327	305	287	272
50MM	943	822	735	670	617	577	540	510	484

SIZING TABLES FOR CRIMP FITTINGS (LPG)

FLOW THROUGH PEX/AL/PEX COMPOSITE PIPE CRIMPED FITTINGS (MJ/H)

LPG | PRESSURE DROP 0.25KPA (METER PRESSURE 2.75KPA)

LENGTH OF STRAIGHT PIPE IN METRES									
NOM. SIZE	2	4	6	8	10	12	14	16	18
16MM	277	190	153	131	116	105	97	90	84
20MM	554	381	306	262	232	210	193	180	169
25MM	1081	743	597	511	453	410	377	351	329
32MM	2173	1494	1199	1027	910	824	758	706	662
40MM	4570	2963	2300	1921	1650	1479	1349	1247	1138
50MM	8266	5574	4426	3771	3281	2962	2716	2534	2328

LENGTH OF STRAIGHT PIPE IN METRES

NOM. SIZE	20	25	30	35	40	45	50	55	60
16MM	80	71	64	59	55	51	49	46	44
20MM	159	141	128	118	110	103	97	92	88
25MM	311	276	250	230	214	201	189	180	172
32MM	625	554	502	462	430	403	381	362	345
40MM	1075	932	837	747	690	642	603	560	535
50MM	2210	1948	1766	1580	1482	1389	1320	1227	1174

LPG | PRESSURE DROP 10.0KPA (METER PRESSURE 70.0KPA)

LENGTH OF STRAIGHT PIPE IN METRES									
NOM. SIZE	2	4	6	8	10	12	14	16	18
16MM	2648	1820	1462	1251	1109	1005	924	860	807
20MM	5297	3640	2923	2502	2218	2009	1848	1720	1614
25MM	10337	7104	5705	4883	4327	3921	3607	3356	3149
32MM	20779	14281	11468	9815	8699	7882	7251	6746	6330
40MM	43691	28325	21987	18368	15775	14144	12897	11919	10881
50MM	79025	53284	42309	36052	31363	28318	25960	24225	22257

LENGTH OF STRAIGHT PIPE IN METRES

NOM. SIZE	20	25	30	35	40	45	50	55	60
16MM	762	675	612	563	524	491	464	441	421
20MM	1524	1351	1224	1126	1048	983	928	882	841
25MM	2974	2636	2388	2197	2044	1918	1812	1721	1642
32MM	5979	5299	4801	4417	4109	3856	3642	3459	3300
40MM	10273	8912	8005	7146	6594	6134	5761	5351	5110
50MM	21125	18619	16885	15101	14170	13283	12614	11732	11222

SPARTAN PEX PRODUCT LIST



SPCCB1616F	SPARTAN CRIMP CONNECTING BARB FEMALE 16MM
SPCCB2020F	SPARTAN CRIMP CONNECTING BARB FEMALE 20MM
SPCCB2525F	SPARTAN CRIMP CONNECTING BARB FEMALE 25MM
SPCCB3232F	SPARTAN CRIMP CONNECTING BARB FEMALE 32MM



SPCE16	SPARTAN CRIMP NO.12 EQUAL ELBOW 16MM
SPCE20	SPARTAN CRIMP NO.12 EQUAL ELBOW 20MM
SPCE25	SPARTAN CRIMP NO.12 EQUAL ELBOW 25MM
SPCE32	SPARTAN CRIMP NO.12 EQUAL ELBOW 32MM
SPCE40	SPARTAN CRIMP NO.12 EQUAL ELBOW 40MM
SPCE50	SPARTAN CRIMP NO.12 EQUAL ELBOW 50MM



SPCELC1615	SPARTAN CRIMP ELBOW LOOSE NUT CONNECTOR 16MM X 1/2" FEMALE
SPCELC2020	SPARTAN CRIMP ELBOW LOOSE NUT CONNECTOR 20MM X 3/4" FEMALE



SPCET16	SPARTAN CRIMP NO.24 EQUAL TEE 16MM
SPCET20	SPARTAN CRIMP NO.24 EQUAL TEE 20MM
SPCET25	SPARTAN CRIMP NO.24 EQUAL TEE 25MM
SPCET32	SPARTAN CRIMP NO.24 EQUAL TEE 32MM
SPCET40	SPARTAN CRIMP NO.24 EQUAL TEE 40MM
SPCET50	SPARTAN CRIMP NO.24 EQUAL TEE 50MM



SPCFE1615	SPARTAN CRIMP NO.14 ELBOW 16MM X 1/2" BSP FEMALE
SPCFE1620	SPARTAN CRIMP NO.14 ELBOW 16MM X 3/4" BSP FEMALE
SPCFE2015	SPARTAN CRIMP NO.14 ELBOW 20MM X 1/2" BSP FEMALE
SPCFE2020	SPARTAN CRIMP NO.14 ELBOW 20MM X 3/4" BSP FEMALE
SPCFE2520	SPARTAN CRIMP NO.14 ELBOW 25MM X 3/4" BSP FEMALE
SPCFE2525	SPARTAN CRIMP NO.14 ELBOW 25MM X 1" BSP FEMALE
SPCFE3225	SPARTAN CRIMP NO.14 ELBOW 32MM X 1" BSP FEMALE
SPCFE4020	SPARTAN CRIMP NO.14 ELBOW 40MM X 3/4" BSP FEMALE
SPCFE4025	SPARTAN CRIMP NO.14 ELBOW 40MM X 1" BSP FEMALE
SPCFE4032	SPARTAN CRIMP NO.14 ELBOW 40MM X 1 1/4" BSP FEMALE
SPCFE4040	SPARTAN CRIMP NO.14 ELBOW 40MM X 1 1/2" BSP FEMALE

CODE	DESCRIPTION
SPCFSC1615	SPARTAN CRIMP NO.2 STRAIGHT CONNECTOR 16MM X 1/2" BSP FEMALE
SPCFSC1620	SPARTAN CRIMP NO.2 STRAIGHT CONNECTOR 16MM X 3/4" BSP FEMALE
SPCFSC1625	SPARTAN CRIMP NO.2 STRAIGHT CONNECTOR 16MM X 1" BSP FEMALE
SPCFSC2015	SPARTAN CRIMP NO.2 STRAIGHT CONNECTOR 20MM X 1/2" BSP FEMALE
SPCFSC2020	SPARTAN CRIMP NO.2 STRAIGHT CONNECTOR 20MM X 3/4" BSP FEMALE
SPCFSC2520	SPARTAN CRIMP NO.2 STRAIGHT CONNECTOR 25MM X 3/4" BSP FEMALE
SPCFSC2525	SPARTAN CRIMP NO.2 STRAIGHT CONNECTOR 25MM X 1" BSP FEMALE
SPCFSC3215	SPARTAN CRIMP NO.2 STRAIGHT CONNECTOR 32MM X 1/2" BSP FEMALE
SPCFSC3220	SPARTAN CRIMP NO.2 STRAIGHT CONNECTOR 32MM X 3/4" BSP FEMALE
SPCFSC3225	SPARTAN CRIMP NO.2 STRAIGHT CONNECTOR 32MM X 1" BSP FEMALE
SPCFSC3232	SPARTAN CRIMP NO.2 STRAIGHT CONNECTOR 32MM X 1 1/4" BSP FEMALE
SPCFSC3240	SPARTAN CRIMP NO.2 STRAIGHT CONNECTOR 32MM X 1 1/2" BSP FEMALE
SPCFSC4040	SPARTAN CRIMP NO.2 STRAIGHT CONNECTOR 40MM X 1 1/2" BSP FEMALE
SPCFSC5015	SPARTAN CRIMP NO.2 STRAIGHT CONNECTOR 50MM X 1/2" BSP FEMALE
SPCFSC5020	SPARTAN CRIMP NO.2 STRAIGHT CONNECTOR 50MM X 3/4" BSP FEMALE
SPCFSC5025	SPARTAN CRIMP NO.2 STRAIGHT CONNECTOR 50MM X 1" BSP FEMALE
SPCFSC5040	SPARTAN CRIMP NO.2 STRAIGHT CONNECTOR 50MM X 1 1/2" BSP FEMALE
SPCFSC6325	SPARTAN CRIMP NO.2 STRAIGHT CONNECTOR 63MM X 1" BSP FEMALE
SPCFSC6350	SPARTAN CRIMP NO.2 STRAIGHT CONNECTOR 63MM X 2" BSP FEMALE



SPCFT16	SPARTAN CRIMP NO.30 FEMALE CENTRE TEE 16MM X 16MM X 1/2" FI
SPCFT20	SPARTAN CRIMP NO.30 FEMALE CENTRE TEE 20MM X 20MM X 3/4" FI
SPCFT25	SPARTAN CRIMP NO.30 FEMALE CENTRE TEE 25MM X 25MM X 1" FI



SPCME1615	SPARTAN CRIMP NO.13 ELBOW 16MM X 1/2" BSP MALE
SPCME1620	SPARTAN CRIMP NO.13 ELBOW 16MM X 3/4" BSP MALE
SPCME2015	SPARTAN CRIMP NO.13 ELBOW 20MM X 1/2" BSP MALE
SPCME2020	SPARTAN CRIMP NO.13 ELBOW 20MM X 3/4" BSP MALE
SPCME2520	SPARTAN CRIMP NO.13 ELBOW 25MM X 3/4" BSP MALE
SPCME2525	SPARTAN CRIMP NO.13 ELBOW 25MM X 1" BSP MALE
SPCME3225	SPARTAN CRIMP NO.13 ELBOW 32MM X 1" BSP MALE
SPCME3232	SPARTAN CRIMP NO.13 ELBOW 32MM X 1 1/4" BSP MALE
SPCME4025	SPARTAN CRIMP NO.13 ELBOW 40MM X 1" BSP MALE
SPCME5025	SPARTAN CRIMP NO.13 ELBOW 50MM X 1" BSP MALE



SPCHP1615	SPARTAN CRIMP HOSE PLATE 16mm
SPCHP2020	SPARTAN CRIMP HOSE PLATE 20mm





CODE	DESCRIPTION
SPCMSC1615	SPARTAN CRIMP NO.3 STRAIGHT CONNECTOR 16MM X 1/2" BSP MALE
SPCMSC1620	SPARTAN CRIMP NO.3 STRAIGHT CONNECTOR 16MM X 3/4" BSP MALE
SPCMSC2015	SPARTAN CRIMP NO.3 STRAIGHT CONNECTOR 20MM X 1/2" BSP MALE
SPCMSC2020	SPARTAN CRIMP NO.3 STRAIGHT CONNECTOR 20MM X 3/4" BSP MALE
SPCMSC2515	SPARTAN CRIMP NO.3 STRAIGHT CONNECTOR 25MM X 1/2" BSP MALE
SPCMSC2520	SPARTAN CRIMP NO.3 STRAIGHT CONNECTOR 25MM X 3/4" BSP MALE
SPCMSC2525	SPARTAN CRIMP NO.3 STRAIGHT CONNECTOR 25MM X 1" BSP MALE
SPCMSC3215	SPARTAN CRIMP NO.3 STRAIGHT CONNECTOR 32MM X 1/2" BSP MALE
SPCMSC3220	SPARTAN CRIMP NO.3 STRAIGHT CONNECTOR 32MM X 3/4" BSP MALE
SPCMSC3225	SPARTAN CRIMP NO.3 STRAIGHT CONNECTOR 32MM X 1" BSP MALE
SPCMSC3232	SPARTAN CRIMP NO.3 STRAIGHT CONNECTOR 32MM X 1 1/4" BSP MALE
SPCMSC4025	SPARTAN CRIMP NO.3 STRAIGHT CONNECTOR 40MM X 1" BSP MALE
SPCMSC4032	SPARTAN CRIMP NO.3 STRAIGHT CONNECTOR 40MM X 1 1/4" BSP MALE
SPCMSC4040	SPARTAN CRIMP NO.3 STRAIGHT CONNECTOR 40MM X 1 1/2" BSP MALE
SPCMSC4050	SPARTAN CRIMP NO.3 STRAIGHT CONNECTOR 40MM X 2" BSP MALE
SPCMSC5015	SPARTAN CRIMP NO.3 STRAIGHT CONNECTOR 50MM X 1/2" BSP MALE
SPCMSC5020	SPARTAN CRIMP NO.3 STRAIGHT CONNECTOR 50MM X 3/4" BSP MALE
SPCMSC5025	SPARTAN CRIMP NO.3 STRAIGHT CONNECTOR 50MM X 1" BSP MALE
SPCMSC5032	SPARTAN CRIMP NO.3 STRAIGHT CONNECTOR 50MM X 1 1/4" BSP MALE
SPCMSC5040	SPARTAN CRIMP NO.3 STRAIGHT CONNECTOR 50MM X 1 1/2" BSP MALE
SPCMSC5050	SPARTAN CRIMP NO.3 STRAIGHT CONNECTOR 50MM X 2" BSP MALE
SPCMSC6350	SPARTAN CRIMP NO.3 STRAIGHT CONNECTOR 63MM X 2" BSP MALE



SPCRC2016	SPARTAN CRIMP NO.1R REDUCING COUPLING 20MM X 16MM
SPCRC2516	SPARTAN CRIMP NO.1R REDUCING COUPLING 25MM X 16MM
SPCRC2520	SPARTAN CRIMP NO.1R REDUCING COUPLING 25MM X 20MM
SPCRC3216	SPARTAN CRIMP NO.1R REDUCING COUPLING 32MM X 16MM
SPCRC3220	SPARTAN CRIMP NO.1R REDUCING COUPLING 32MM X 20MM
SPCRC3225	SPARTAN CRIMP NO.1R REDUCING COUPLING 32MM X 25MM
SPCRC4020	SPARTAN CRIMP NO.1R REDUCING COUPLING 40MM X 20MM
SPCRC4025	SPARTAN CRIMP NO.1R REDUCING COUPLING 40MM X 25MM
SPCRC4032	SPARTAN CRIMP NO.1R REDUCING COUPLING 40MM X 32MM
SPCRC5020	SPARTAN CRIMP NO.1R REDUCING COUPLING 50MM X 20MM
SPCRC5025	SPARTAN CRIMP NO.1R REDUCING COUPLING 50MM X 25MM
SPCRC5032	SPARTAN CRIMP NO.1R REDUCING COUPLING 50MM X 32MM
SPCRC5040	SPARTAN CRIMP NO.1R REDUCING COUPLING 50MM X 40MM
SPCRC6340	SPARTAN CRIMP NO.1R REDUCING COUPLING 63MM X 40MM
SPCRC6350	SPARTAN CRIMP NO.1R REDUCING COUPLING 63MM X 50MM



SPCRE2016	SPARTAN CRIMP NO.12R REDUCING ELBOW 20MM X 16MM
SPCRE2516	SPARTAN CRIMP NO.12R REDUCING ELBOW 25MM X 16MM
SPCRE2520	SPARTAN CRIMP NO.12R REDUCING ELBOW 25MM X 20MM
SPCRE3225	SPARTAN CRIMP NO.12R REDUCING ELBOW 32MM X 25MM
SPCRE5040	SPARTAN CRIMP NO.12R REDUCING ELBOW 50MM X 40MM

CODE	DESCRIPTION
SPCRT161620	SPARTAN CRIMP NO.28 END REDUCING TEE 16MM X 16MM X (20MM)
SPCRT161625	SPARTAN CRIMP NO.28 END REDUCING TEE 16MM X 16MM X (25MM)
SPCRT201616	SPARTAN CRIMP NO.27 END & BRANCH REDUCING TEE 20MM X 16MM X (16MM)
SPCRT201620	SPARTAN CRIMP NO.26 END REDUCING TEE 20MM X 16MM X (20MM)
SPCRT202016	SPARTAN CRIMP NO.25 BRANCH REDUCING TEE 20MM X 20MM X (16MM)
SPCRT202025	SPARTAN CRIMP NO.28 END REDUCING TEE 20MM X 20MM X (25MM)
SPCRT252016	SPARTAN CRIMP NO.27 END & BRANCH REDUCING TEE 25MM X 20MM X (16MM)
SPCRT252020	SPARTAN CRIMP NO.27 END & BRANCH REDUCING TEE 25MM X 20MM X (20MM)
SPCRT252025	SPARTAN CRIMP NO.26 END REDUCING TEE 25MM X 20MM X (25MM)
SPCRT252516	SPARTAN CRIMP NO.25 BRANCH REDUCING TEE 25MM X 25MM X (16MM)
SPCRT252520	SPARTAN CRIMP NO.25 BRANCH REDUCING TEE 25MM X 25MM X (20MM)
SPCRT322520	SPARTAN CRIMP NO.27 END & BRANCH REDUCING TEE 32MM X 25MM X (20MM)
SPCRT323216	SPARTAN CRIMP NO.25 BRANCH RED. TEE 32MM X 32MM X (16MM)
SPCRT323220	SPARTAN CRIMP NO.25 BRANCH RED. TEE 32MM X 32MM X (20MM)
SPCRT323225	SPARTAN CRIMP NO.25 BRANCH RED. TEE 32MM X 32MM X (25MM)
SPCRT322532	SPARTAN CRIMP NO.26 END REDUCING TEE 32MM X 25MM X (32MM)
SPCRT322525	SPARTAN CRIMP NO.27 END & BRANCH RED. TEE 32MM X 25MM X (25MM)
SPCRT404020	SPARTAN CRIMP NO.25 BRANCH REDUCING TEE 40MM X 40MM X (20MM)
SPCRT404025	SPARTAN CRIMP NO.25 BRANCH REDUCING TEE 40MM X 40MM X (25MM)
SPCRT404032	SPARTAN CRIMP NO.25 BRANCH REDUCING TEE 40MM X 40MM X (32MM)
SPCRT505020	SPARTAN CRIMP NO.25 BRANCH REDUCING TEE 50MM X 50MM X (20MM)
SPCRT505025	SPARTAN CRIMP NO.25 BRANCH REDUCING TEE 50MM X 50MM X (25MM)
SPCRT505032	SPARTAN CRIMP NO.25 BRANCH REDUCING TEE 50MM X 50MM X (32MM)
SPCRT505040	SPARTAN CRIMP NO.25 BRANCH REDUCING TEE 50MM X 50MM X (40MM)
SPCRT636340	SPARTAN CRIMP NO.25 BRANCH REDUCING TEE 63MM X 63MM X (40MM)
SPCS16	SPARTAN CRIMP NO.61 END STOPPER 16MM
SPCS20	SPARTAN CRIMP NO.61 END STOPPER 20MM
SPCS25	SPARTAN CRIMP NO.61 END STOPPER 25MM
SPCS32	SPARTAN CRIMP NO.61 END STOPPER 32MM
SPCSC16	SPARTAN CRIMP NO.1 STRAIGHT COUPLING 16MM
SPCSC20	SPARTAN CRIMP NO.1 STRAIGHT COUPLING 20MM
SPCSC25	SPARTAN CRIMP NO.1 STRAIGHT COUPLING 25MM
SPCSC32	SPARTAN CRIMP NO.1 STRAIGHT COUPLING 32MM
SPCSC40	SPARTAN CRIMP NO.1 STRAIGHT COUPLING 40MM
SPCSC50	SPARTAN CRIMP NO.1 STRAIGHT COUPLING 50MM
SPCSC63	SPARTAN CRIMP NO.1 STRAIGHT COUPLING 63MM





CODE	DESCRIPTION
SPCSNBV2020	SPARTAN CRIMP SWIVEL NUT BALL VALVE 20MM X 3/4"
SPCSNBV2025	SPARTAN CRIMP SWIVEL NUT BALL VALVE 20MM X 1"
SPCSNBV2520	SPARTAN CRIMP SWIVEL NUT BALL VALVE 25MM X 3/4"

SPCBV16	SPARTAN CRIMP BALL VALVE 16MM
SPCBV20	SPARTAN CRIMP BALL VALVE 20MM
SPCBV25	SPARTAN CRIMP BALL VALVE 25MM
SPCBV32	SPARTAN CRIMP BALL VALVE 32MM



SPCSLC1615	SPARTAN CRIMP STRAIGHT LOOSE NUT CONNECTOR 16MM X 1/2" FEMALE
SPCSLC2015	SPARTAN CRIMP STRAIGHT LOOSE NUT CONNECTOR 20MM X 1/2" FEMALE
SPCSLC2020	SPARTAN CRIMP STRAIGHT LOOSE NUT CONNECTOR 20MM X 3/4" FEMALE



SPCWF1615	SPARTAN CRIMP NO. 15BP LUGGED ELBOW 16MM X 1/2" BSP FEMALE
SPCWF2015	SPARTAN CRIMP NO. 15BP LUGGED ELBOW 20MM X 1/2" BSP FEMALE
SPCWF2020	SPARTAN CRIMP NO. 15BP LUGGED ELBOW 20MM X 3/4" BSP FEMALE



SPCWM161565	SPARTAN CRIMP NO. 19BP LUGGED ELBOW 16MM X 1/2" BSP MALE 65MM
SPCWM161595	SPARTAN CRIMP NO. 19BP LUGGED ELBOW 16MM X 1/2" BSP MALE 95MM
SPCWM201595	SPARTAN CRIMP NO. 19BP LUGGED ELBOW 20MM X 1/2" BSP MALE 95MM
SPCWM202095	SPARTAN CRIMP NO. 19BP LUGGED ELBOW 20MM X 3/4" BSP MALE 95MM
SPCWM1615150	SPARTAN CRIMP NO. 19BP LUGGED ELBOW 16MM X 1/2" BSP MALE 150MM
SPCWM1615180	SPARTAN CRIMP NO. 19BP LUGGED ELBOW 16MM X 1/2" BSP MALE 180MM
SPCWM2015180	SPARTAN CRIMP NO. 19BP LUGGED ELBOW 20MM X 1/2" BSP MALE 180MM
SPCWM2020180	SPARTAN CRIMP NO. 19BP LUGGED ELBOW 20MM X 3/4" BSP MALE 180MM
SPCWM1615200	SPARTAN CRIMP NO. 19BP LUGGED ELBOW 16MM X 1/2" BSP MALE 200MM



SPCCPW1615	SPARTAN CRIMP WATER 16MM XCOPPER PRESS 1/2" (BLACK RING)
SPCCPW2020	SPARTAN CRIMP WATER 20MM XCOPPER PRESS 3/4" (BLACK RING)
SPCCPW2525	SPARTAN CRIMP GAS 25MM X COPPER PRESS 1" (BLACK RING)
SPCCPW3232	SPARTAN CRIMP GAS 32MM X COPPER PRESS 1 1/4" (BLACK RING)
SPCCPG1615	SPARTAN CRIMP GAS 16MM X COPPER PRESS 1/2" (YELLOW RING)
SPCCPG2020	SPARTAN CRIMP GAS 20MM X COPPER PRESS 3/4" (YELLOW RING)
SPCCPG2525	SPARTAN CRIMP GAS 25MM X COPPER PRESS 1" (YELLOW RING)
SPCCPG3232	SPARTAN CRIMP GAS 32MM X COPPER PRESS 1 1/2" (YELLOW RING)

SPARTAN PEX PIPE PRODUCT LIST

SPARTAN POTABLE WATER PIPE BLACK

CODE	DESCRIPTION	SDR RATING	PN RATING
SPCP16B5	SPARTAN PEX STRAIGHT LENGTH 16MM X 5M BLACK	SDR9	PN20
SPCP16B50	SPARTAN PEX COIL 16MM X 50M BLACK	SDR9	PN20
SPCP16B100	SPARTAN PEX COIL 16MM X 100M BLACK	SDR9	PN20
SPCP20B5	SPARTAN PEX STRAIGHT LENGTH 20MM X 5M BLACK	SDR11	PN16
SPCP20B50	SPARTAN PEX COIL 20MM X 50M BLACK	SDR11	PN16
SPCP25B5	SPARTAN PEX STRAIGHT LENGTH 25MM X 5M BLACK	SDR11	PN16
SPCP25B50	SPARTAN PEX COIL 25MM X 50M BLACK	SDR11	PN16
SPCP32B5	SPARTAN PEX STRAIGHT LENGTH 32MM X 5M BLACK	SDR11	PN16
SPCP32B50	SPARTAN PEX COIL 32MM X 50M BLACK	SDR11	PN16



SPARTAN POTABLE PIPE IN CONDUIT BLACK

CODE	DESCRIPTION	SDR	PN
SPCPPIC1650	SPARTAN PEX PIPE IN CONDUIT BLACK 16MM X 50M	SDR9	PN20
SPCPPIC2050	SPARTAN PEX PIPE IN CONDUIT BLACK 20MM X 50M	SDR11	PN16



SPARTAN HOT POTABLE WATER PIPE RED

CODE	DESCRIPTION	SDR	PN
SPCP16R5	SPARTAN PEX STRAIGHT LENGTH 16MM X 5M RED	SDR9	PN20
SPCP16R50	SPARTAN PEX COIL 16MM X 50M RED	SDR9	PN20
SPCP16R100	SPARTAN PEX COIL 16MM X 100M RED	SDR9	PN20
SPCP20R100	SPARTAN PEX COIL 20MM X 100M RED	SDR11	PN16
SPCP20R5	SPARTAN PEX STRAIGHT LENGTH 20MM X 5M RED	SDR11	PN16
SPCP20R50	SPARTAN PEX COIL 20MM X 50M RED	SDR11	PN16



SPARTAN RECYCLED WATER PIPE LILAC

CODE	DESCRIPTION	SDR	PN
SPCP16L5	SPARTAN PEX STRAIGHT LENGTH 16MM X 5M LILAC	SDR9	PN20
SPCP16L50	SPARTAN PEX COIL 16MM X 50M LILAC	SDR9	PN20
SPCP16L100	SPARTAN PEX COIL 16MM X 100M LILAC	SDR9	PN20
SPCP20L5	SPARTAN PEX STRAIGHT LENGTH 20MM X 5M LILAC	SDR11	PN16
SPCP20L50	SPARTAN PEX COIL 20MM X 50M LILAC	SDR11	PN16





SPARTAN WATER PIPE BLUE			
CODE	DESCRIPTION	SDR	PN
SPCP16BL5	SPARTAN PEX STRAIGHT LENGTH 16MM X 5M BLUE	SDR9	PN20
SPCP16BL50	SPARTAN PEX COIL 16MM X 50M BLUE	SDR9	PN20
SPCP16BL100	SPARTAN PEX COIL 16MM X 100M BLUE	SDR9	PN20
SPCP20BL100	SPARTAN PEX COIL 20MM X 100M BLUE	SDR11	PN16
SPCP20BL5	SPARTAN PEX STRAIGHT LENGTH 20MM X 5M BLUE	SDR11	PN16



SPARTAN RAIN WATER PIPE GREEN			
CODE	DESCRIPTION	SDR	PN
SPCP16G5	SPARTAN PEX STRAIGHT LENGTH 16MM X 5M GREEN	SDR9	PN20
SPCP16BG0	SPARTAN PEX COIL 16MM X 50M GREEN	SDR9	PN20
SPCP16G100	SPARTAN PEX COIL 16MM X 100M GREEN	SDR9	PN20
SPCP20G5	SPARTAN PEX STRAIGHT LENGTH 20MM X 5M GREEN	SDR11	PN16
SPCP20G50	SPARTAN PEX COIL 20MM X 50M GREEN	SDR11	PN16



SPARTAN WATER MULTI LAYER PIPE	
CODE	DESCRIPTION
SPCMLW165	SPARTAN CRIMP MULTI LAYER WATER PIPE 16MM*5M
SPCMLW1650	SPARTAN CRIMP MULTI LAYER WATER PIPE 16MM*50M
SPCMLW205	SPARTAN CRIMP MULTI LAYER WATER PIPE 20MM*5M
SPCMLW2050	SPARTAN CRIMP MULTI LAYER WATER PIPE 20MM*50M
SPCMLW255	SPARTAN CRIMP MULTI LAYER WATER PIPE 25MM*5M
SPCMLW325	SPARTAN CRIMP MULTI LAYER WATER PIPE 32MM*5M

SPARTAN GAS PIPE (YELLOW)

CODE	DESCRIPTION
SPCGC1625	SPARTAN GAS COIL 16MM X 25M
SPCGC1650	SPARTAN GAS COIL 16MM X 50M
SPCGC16100	SPARTAN GAS COIL 16MM X 100M
SPCGC20100	SPARTAN GAS COIL 20MM X 100M
SPCGC2025	SPARTAN GAS COIL 20MM X 25M
SPCGC2050	SPARTAN GAS COIL 20MM X 50M
SPCGC2525	SPARTAN GAS COIL 25MM X 25M
SPCGC2550	SPARTAN GAS COIL 25MM X 50M
SPCGC3225	SPARTAN GAS COIL 32MM X 25M
SPCGC3250	SPARTAN GAS COIL 32MM X 50M
SPCGL165	SPARTAN GAS STRAIGHT LENGTH 16MM X 5M
SPCGL205	SPARTAN GAS STRAIGHT LENGTH 20MM X 5M
SPCGL255	SPARTAN GAS STRAIGHT LENGTH 25MM X 5M
SPCGL325	SPARTAN GAS STRAIGHT LENGTH 32MM X 5M
SPCGL405	SPARTAN GAS STRAIGHT LENGTH 40MM X 5M
SPCGL505	SPARTAN GAS STRAIGHT LENGTH 50MM X 5M

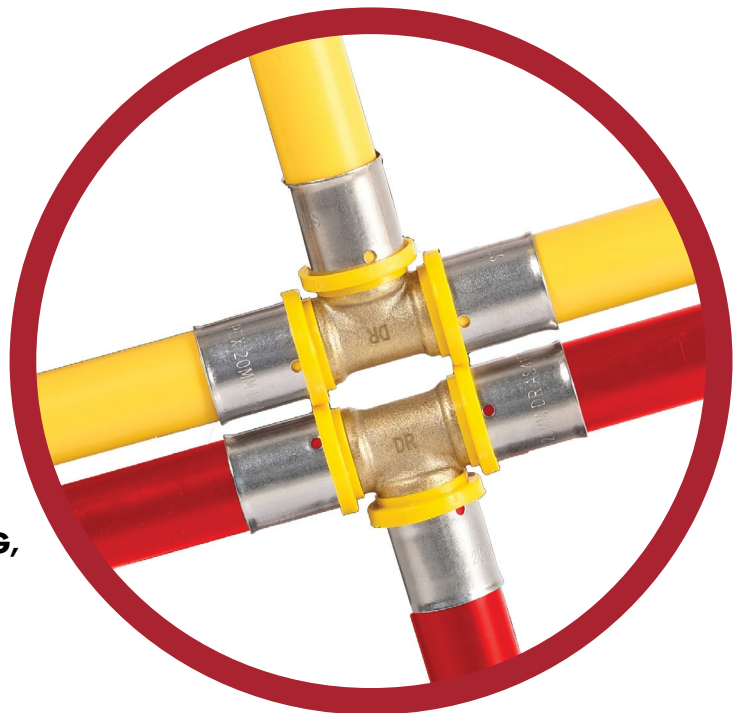


• **DUAL SYSTEM FOR USE WITH GAS AND WATER APPLICATIONS**

• **EXCELLENT FLEXIBILITY AND DURABILITY**

• **50 YEARS OF WARRANTY**

• **NO SOLVENT ADHESIVES, SOLDERING, WELDING OR BRAZING REQUIRED**



SPARTAN PEX WATER INSTALLATION INSTRUCTIONS

The following instructions explain the correct installation procedure for SPARTAN PEX fittings with SPARTAN PEX water pipe or SPARTAN PEX Multilayer pipe.



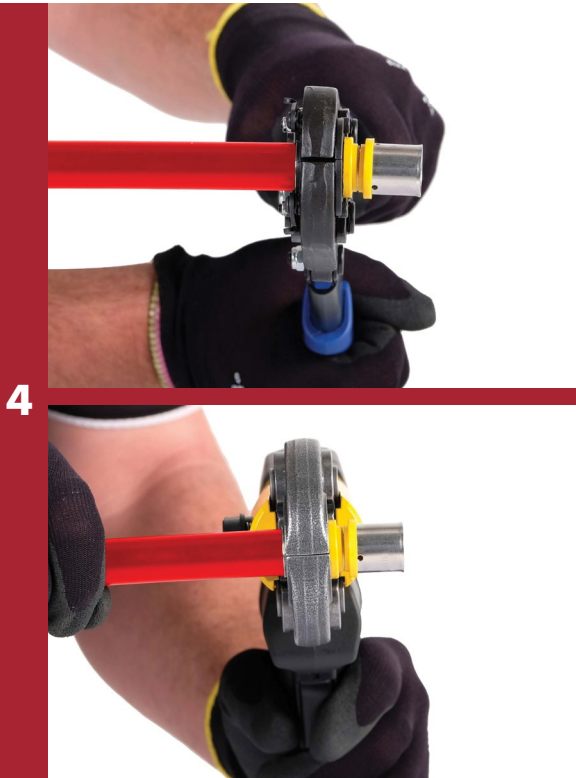
With a set of pipe cutters /shears cut the pipe at 90° ensuring the pipe is square on the end.



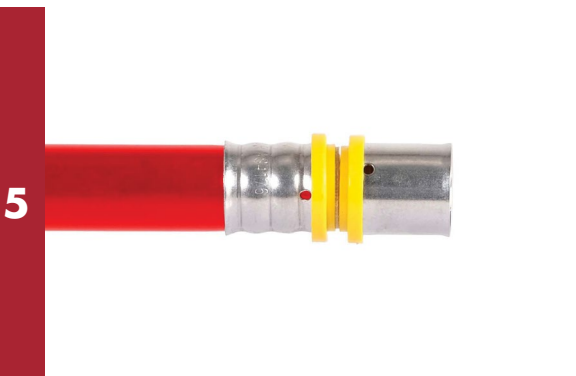
Push fitting into pipe until pipe is visible on the three viewing ports on the stainless steel crimp ring.



Using the SPARTAN crimping tool which has a 'U' profile jaw. Place tool over stainless steel crimp ring ensuring jaws are centred.



Proceed to crimp the fitting until jaws of tool are completely closed.



Stainless ring will have three visible lines if it has been crimped correctly.

SPARTAN PEX WATER INSTALLATION INSTRUCTIONS

At completion of installation a pressure test must be carried out in accordance with AS/NZS 3500 for water applications and AS/NZS 5601 for gas applications. Along with any other requirements specified by local authorities.



SPARTAN PEX GAS INSTALLATION INSTRUCTIONS

The following instructions explain the correct installation procedure for SPARTAN PEX fittings with SPARTAN PEX gas pipe.

1



With a set of pipe cutters /shears cut the pipe at 90° ensuring the pipe is square on the end.

2a



16 - 32mm

For easy insertion of fitting, use a rounding tool on the cut end of the pipe.

2b



40mm and over

These sizes must be reamed using a size specific reaming tool as shown in illustration.

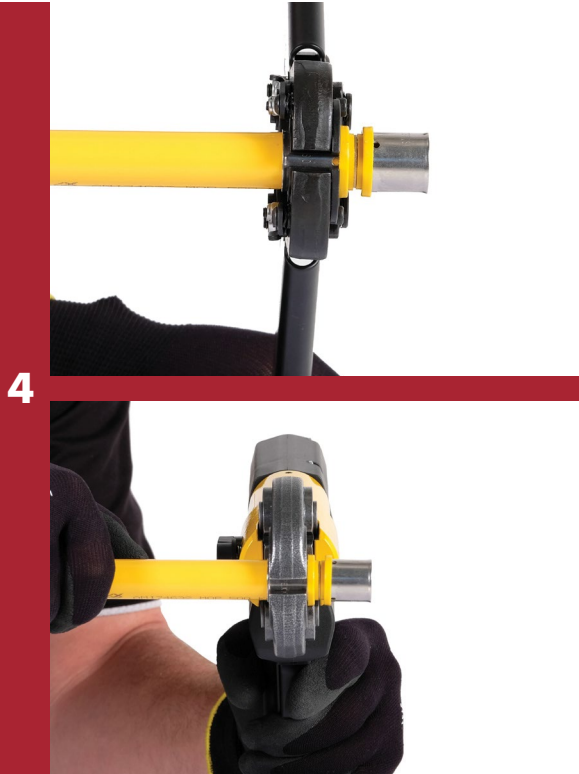
3



Push fitting into pipe until pipe is visible on the three viewing ports on the stainless steel crimp ring.

SPARTAN PEX GAS INSTALLATION INSTRUCTIONS

The following instructions explain the correct installation procedure for SPARTAN PEX fittings with SPARTAN PEX gas pipe.



Using the SPARTAN crimping tool which has a 'U' profile jaw. Place tool over stainless steel crimp ring ensuring jaws are centred.



Proceed to crimp the fitting until jaws of tool are completely closed.

SPARTAN PEX TOOLING

6



Stainless ring will have three visible lines if it has been crimped correctly.



Battery Crimping Tool



Manual Crimping Tool



AQUALINE PRODUCTS LIMITED
7 Winston Place, Henderson, AUCKLAND
0610 T: 0800 889 914
WWW.AQUALINE.CO.NZ