

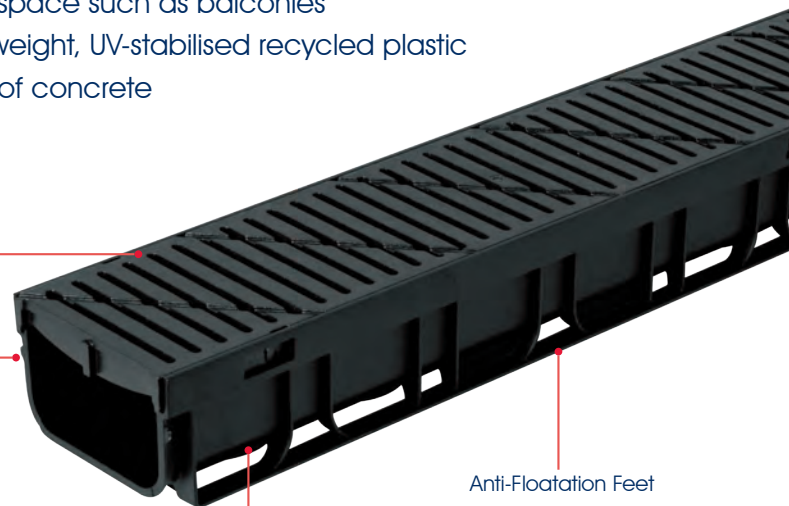


## Modern Straight-Line Drainage

- Ideal for paths, driveways and areas with limited space such as balconies
- Made in Australia from tough, durable and light-weight, UV-stabilised recycled plastic
- Hold down feet to stop floatation during pouring of concrete
- 9 bottom outlet positions to choose from
- All grates comply to Australian Standards

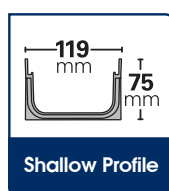
Easy interchangeable clip-in grates. Suits all RELN channel grates

Lock Rain Mate ends together easily to create sturdy, longer channels



Anti-Floatation Feet

### Components:



9 Bottom Outlets to choose from.

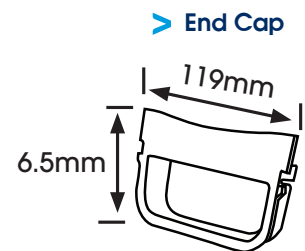
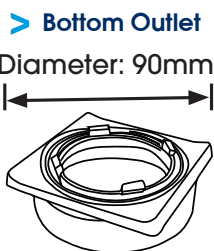
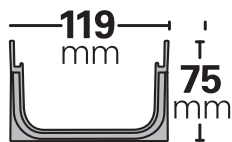
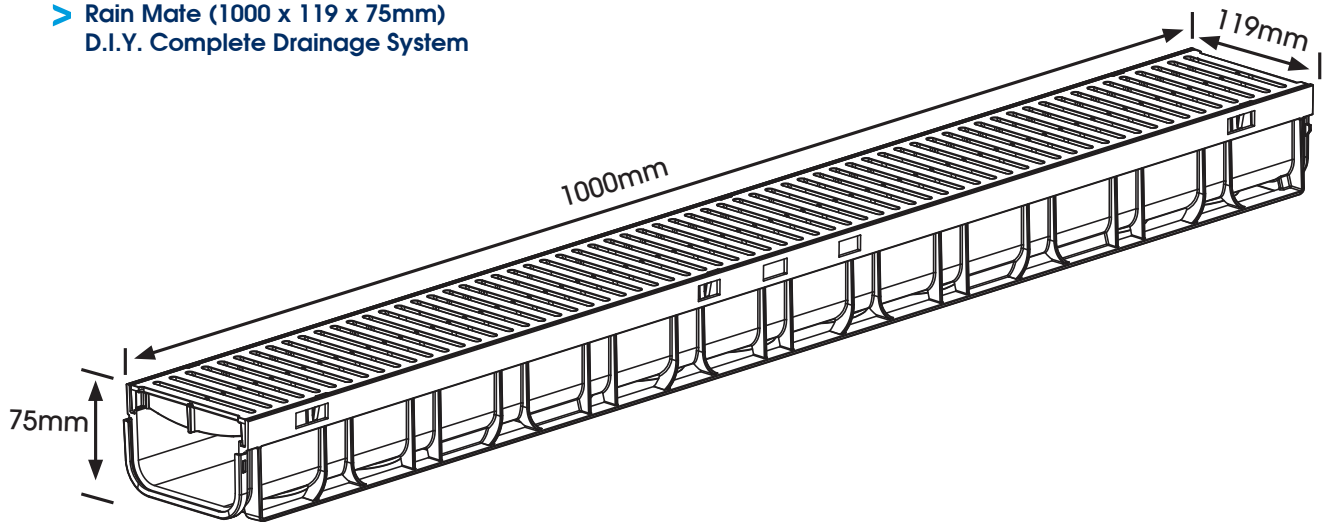
Bottom Outlet fits 90mm PVC Stormwater pipe



## Rain Mate - Modern Straight - Line Drainage

RELN Rain Mate is our modern straight line drainage, ideal for paths, driveways and areas with limited space such as balconies. Choose which grates you want and easily clip them into place. This range is your property's best mate when it rains.

### > Rain Mate (1000 x 119 x 75mm) D.I.Y. Complete Drainage System



- Ideal for paths, driveways and areas with limited space such as balconies
- Designed to withstand 5 tonne vehicle weight
- Tough, durable and lightweight UV stabilised recycled plastic
- Australian Made
- Lock-in clips reduces channel movement
- Hold down feet to stop floatation during pouring of concrete
- Available in all RELN grates
- Easily interchangeable clip in grates
- 9 bottom outlets to choose from, for maximum flexibility

- Bottom outlet adapter for quick and easy installation available
- Bottom outlet fits 90mm PVC stormwater pipe

**Grate Options:** (11.3cm x 2.5cm x 1m): Plastic in Black, Sandstone, Terracotta, Portland Grey and Heritage Green. Black Heel Guard Plastic, Architectural, Stainless Steel, Galvanised Steel, Civil Ductile Iron.

**Risers:** 1m Channel, End Cap, Leaf Guard, Bottom Outlet Adapter

**Display:** Hang Pad and Flyer available

### > Frequently Asked Questions

#### Q1. What is the difference between Storm Mate and Rain Mate?

A. Both are great for straight-line drainage, however Rain Mate comes with 9 bottom outlet options for maximum design flexibility, and a bottom outlet adapter which fits 90mm PVC stormwater pipe.

#### Q2. What is the best grate for busy pedestrian areas?

A. Rain Mate, Rain Drain and Drain Trade can all be fitted with RELN's Heel Guard plastic grate or RELN's 316 Stainless Steel Architectural grate. Both have a residential wheel loading of up to 1.5 Tonnes when installed correctly.

#### Q3. Can I change or replace the grate at a later stage?

A. Yes, all Reln grates Traditional, Heel Guard Galvanised, Stainless, Architectural and Ductile interchange with Reln complete channel range.

#### Q4. Can I use the same grate on Rain Mate, Rain Drain and Rain Drain Trade?

A. All our grates for Storm Mate, Storm Drain, Rain Mate, Rain Drain and Rain Drain Trade are interchangeable, and fit each channel perfectly. Simply click grate into channel!





1m Channel complete with Gate

**1m - Channel complete with Plastic Black Gate**

Product Code: 003630

Weight: 2.9kg

Load Rating:  
5 Tonne in Concrete
**1m - Channel complete with Heel Guard Black Plastic Gate**

Product Code: 003635

Weight: 2kg

Load Rating:  
5 Tonne in Concrete
**1m - Channel complete with Galvanised Steel Gate**

Product Code: 003640

Weight: 3kg

Load Rating:  
5 Tonne in Concrete
**1m - Channel complete with Stainless Steel Gate**

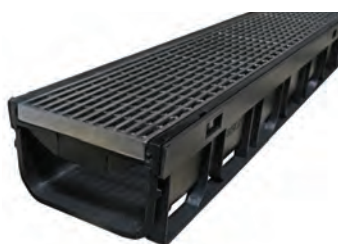
Product Code: 003641

Weight: 2.8kg

Load Rating:  
5 Tonne in Concrete
**1m - Channel complete with 316 Architectural Gate**

Product Code: 003642

Weight: 3.8kg

Load Rating:  
5 Tonne in Concrete
**1m - Channel complete with Sandstone Plastic Gate**

Product Code: 003632

Weight: 3kg

Load Rating:  
5 Tonne in Concrete
**1m - Channel complete with Portland Grey Plastic Gate**

Product Code: 003633

Weight: 3kg

Load Rating:  
5 Tonne in Concrete
**1m - Channel complete with Heritage Green Plastic Gate**

Product Code: 003634

Weight: 3kg

Load Rating:  
5 Tonne in Concrete



1m Channel complete with Grate / Garage Pack / Accessories / Concrete Tape

**1m - Channel complete with Plastic Terracotta Grate**



Product Code: 003631

Weight: 3kg

Load Rating:  
5 Tonne in Concrete



**Rain Mate - End Cap**



Product Code: 003621

Weight: 0.2kg

Load Rating:  
N/A



**Rain Mate - Bottom Outlet**



Product Code: 003505

Weight: 0.03kg

Load Rating:  
N/A



**Rain Mate - Leaf Guard**



Product Code: 003506

Weight: 0.2kg

Load Rating:  
N/A



**Rain Mate - Garage Pack complete with 3x 1m Channel Black Heel Guard Plastic Grate, 2x End Cap, 1x Bottom Outlet**



Product Code: 003624

Weight: 11kg

Load Rating:  
5 Tonne in Concrete



**Concrete Tape 50m**



Product Code: 000069

Weight: 0.5kg

Features & Benefits:  
Protect your grate when pouring concrete  
Easily removable



**Concrete Tape 9m**



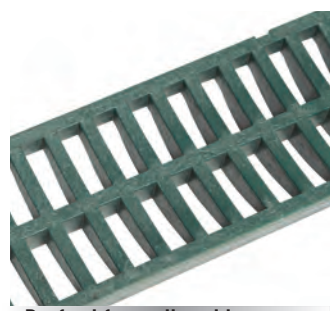
Product Code: 000070

Weight: 0.12kg

Features & Benefits:  
Protect your grate when pouring concrete  
Easily removable



**1m - Heritage Green Plastic Grate Only**



Product Code: 002086

Weight: 1.7kg

Load Rating:  
5 Tonne in Concrete



Perfect for paths, driveways and pool surrounds



## Grates Only (Channels)

1m - Black Plastic  
Grate Only

Product Code: 002079

Weight: 1.6kg

Load Rating:  
5 Tonne in Concrete

9 319022 020790

Perfect for paths, driveways  
and gardens1m - Black Heel Guard  
Plastic Grate Only

Product Code: 002071

Weight: 0.7kg

Load Rating:  
5 Tonne in Concrete

9 319022 020714

Perfect for paths, driveways  
and pedestrian applications1m - Galvanised Steel  
Grate Only

Product Code: 002089

Weight: 1.7kg

Load Rating:  
5 Tonne in Concrete

9 319022 020899

Hard wearing heavy duty  
galvanised steel grate1m - Stainless Steel  
Grate Only

Product Code: 002090

Weight: 1.5kg

Load Rating:  
5 Tonne in Concrete

9 319022 020905

Durability and appearance  
with 304 Stainless Steel1m - 316 Architectural  
Grate complete with  
Surround Only

Product Code: 003227

Weight: 2.5kg

Load Rating:  
5 Tonne in Concrete

9 319022 032274

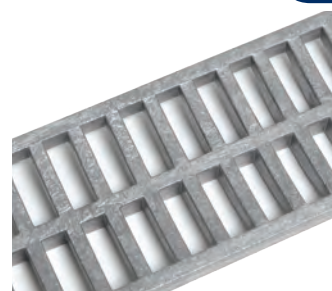
316 Stainless Steel  
wedge wire perfect for high  
end pedestrian applications1m - Portland Grey Plastic  
Grate Only

Product Code: 001203

Weight: 1.7kg

Load Rating:  
5 Tonne in Concrete

9 319022 012030

Perfect for paths, driveways  
and pool surrounds1m - Sandstone Plastic  
Grate Only

Product Code: 002095

Weight: 1.7kg

Load Rating:  
5 Tonne in Concrete

9 319022 020950

Perfect for paths, driveways  
and pool surrounds1m - Terracotta Plastic  
Grate Only

Product Code: 002093

Weight: 1.7kg

Load Rating:  
5 Tonne in Concrete

9 319022 020936

Perfect for paths, driveways  
and pool surrounds





Grates Only (Channels) / 1m Channel Only

**500mm - Ductile Iron Grate Only - Class C - Civil**



Product Code: 002091

Weight: 2.4kg

Load Rating:



5000kg Heavy Duty



9 319022 020912

Perfect for commercial applications with slow moving heavy vehicles

**1m - Rain Mate Channel Only**



Product Code: 003620

Weight: 1.3kg

Load Rating:

N/A

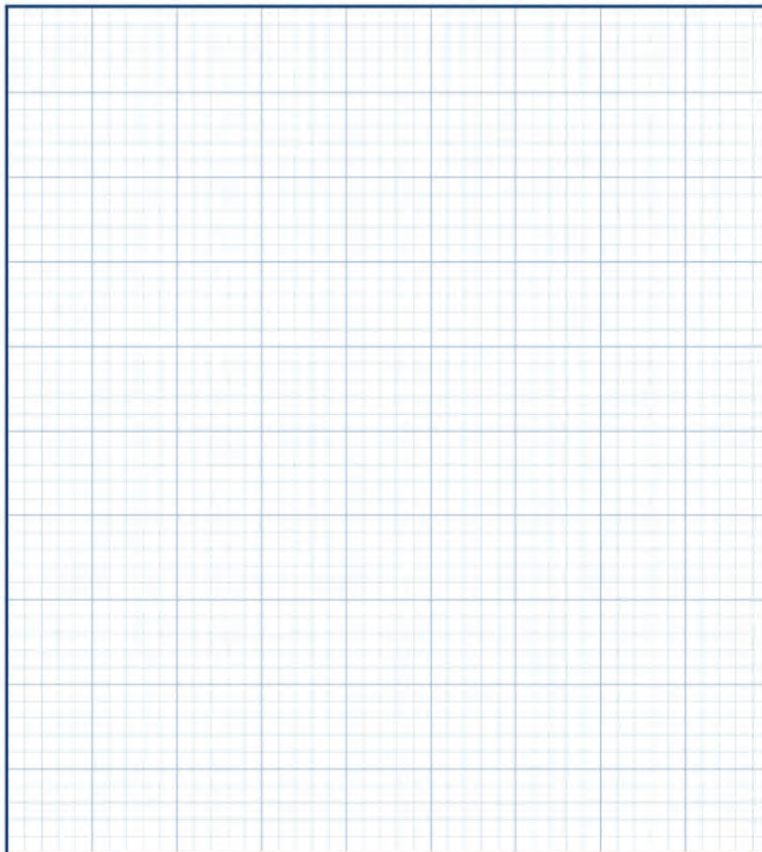


9 319022 036203



**Drainage Planner**

Design your own drainage system



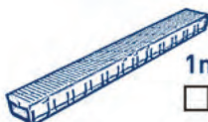
**End Cap**

Qty required



**Leaf Guard**

Qty required



**1m Channel**

Qty required



**Bottom Outlet**

Qty required

**four simple steps**



**1. Prepare Ground**

- Prepare ground with 50mm deep compacted sand base
- Allow for a minimum of 100mm backfill of concrete on each side
- Fix a string line to set finished surface level
- For best run-off allow for a fall of approx 5mm every 1m length



**2. Lay Out**

**ASSEMBLE CHANNEL & GRATE PRIOR TO INSTALLATION**

- Lay out Rain Mate® to check installation
- Locate pipe outlet at lowest end of installation

• Cut out bottom outlet hole to suit • Rain Mate® can be cut to length with saw



**3. Join Components**

- Join channels - fit End Cap at each end
- Joints and End Caps can be sealed with silicone
- Fit Bottom Outlet to channel

and seal with silicone • Join 90mm PVC stormwater pipe to End or Bottom Outlet with PVC plumbers glue



**4. Pour Concrete**

- Rain Mate® installations must be set in concrete
- Cover grate with tape to protect from concrete splash
- Pour concrete

and finish top surface 2mm above level of the grate • Allow full cure before removing grates or vehicle use - 3 days • Grates can be removed by inserting screw driver into slot and twisting gently to lift grate

• For further details on installation, please visit [www.reln.com.au](http://www.reln.com.au)