



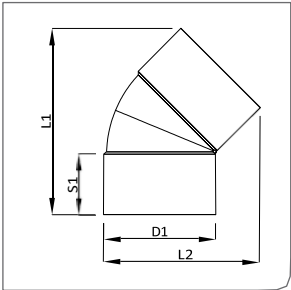
0800 889 914 | www.aqualine.co.nz

PVCplumbingFITTINGS



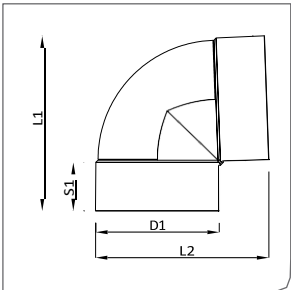
Stormwater Fittings

Elbow (Bend)



45° elbow Stormwater SCJ F+F (Bend)

Code	Description	d1	s1	L1	L2
701A.225.45	225 X 45° S/W ELBOW (Moulded)	DN225	100	363	344
701A.300.45	300 X 45° S/W ELBOW (Moulded)	DN300	125	455	420



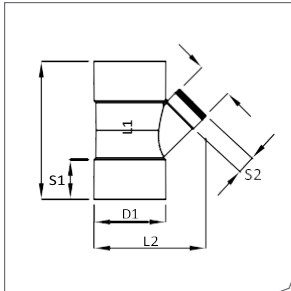
88/90° elbow Stormwater SCJ F+F (Bend)

Code	Description	d1	s1	L1	L2
701A.225.88	225 X 88/90° S/W ELBOW (Moulded)	DN225	100	367	355
701A.300.88	300 X 88/90° S/W ELBOW (Moulded)	DN300	125	462	443



Stormwater Fittings

Junction



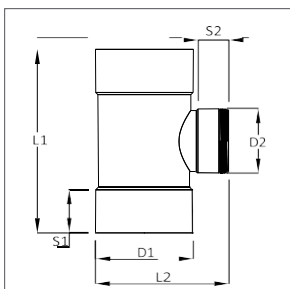
45° Junction Stormwater SCJ F+F

Code	Description	d1	d2	s1	s2	L1	L2
704A.150.100.45	150 X 100 X 45° S/W JUNCTION (Moulded)	DN150	DN100	68	50	357	245
704A.225.100.45	225 X 100 X 45° S/W JUNCTION (Moulded)	DN225	DN100	110	50	500	397
704A.225.150.45	225 X 150 X 45° S/W JUNCTION (Moulded)	DN225	DN150	110	76	500	449
704A.225.45	225 X 225 X 45° S/W JUNCTION (Moulded)	DN225	DN225	110	110	620	540
704A.300.100.45	300 X 100 X 45° S/W JUNCTION (Moulded)	DN300	DN100	175	50	637	465
704A.300.150.45	300 X 150 X 45° S/W JUNCTION (Moulded)	DN300	DN150	175	76	637	518
704A.300.45	300 X 300 X 45° S/W JUNCTION (Moulded)	DN300	DN300	175	175	802	683



Stormwater Fittings

Junction



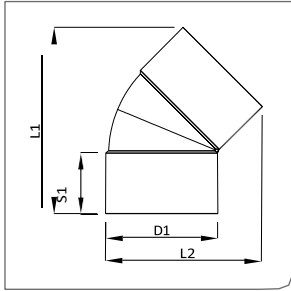
90° Junction Stormwater SCJ F+F

Code	Description	d1	d2	s1	s2	L1	L2
704A.225.90	225 X 225 X 90° S/W JUNCTION (Moulded)	DN225	DN225	110	110	500	396
704A.300.90	300 X 300 X 90° S/W JUNCTION (Moulded)	DN300	DN300	125	125	680	500



DWV Sewer Fittings

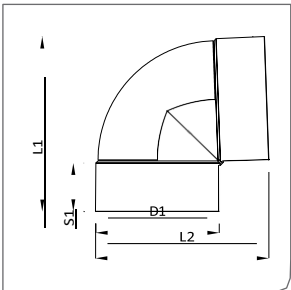
Bend (elbow)



45° dwv Sewer SCJ F+F (elbow)Bend

Code	Description	d1	s1	L1	L2
101A.225.45	225 X 45° DWV BEND (Moulded)	DN225	110	435	370
101A.300.45	300 X 45° DWV BEND (Moulded)	DN300	175	533	464

Refer to Lobster Bend DWV for other sizes.



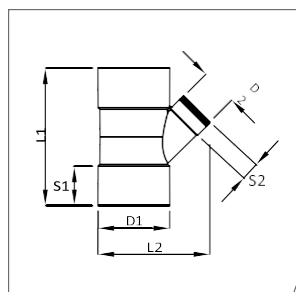
88/90° Bend dwV Sewer SCJ F+F (elbow)

Code	Description	d1	s1	L1	L2
101A.225.88	225 X 88/90° DWV BEND (Moulded)	DN225	110	430	424
101A.300.88	300 X 88/90° DWV BEND (Moulded)	DN300	175	564	555



DWV Sewer Fittings

Junction



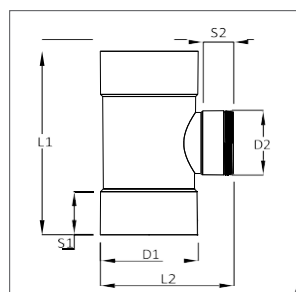
45° Junction dwV Sewer SCJ F+F

Code	Description	d1	d2	s1	s2	L1	L2
104A.225.100.45	225 X 100 X 45° DWV JUNCTION (Moulded)	DN225	DN100	110	50	500	397
104A.225.150.45	225 X 150 X 45° DWV JUNCTION (Moulded)	DN225	DN150	110	76	500	449
104A.300.100.45	300 X 150 X 45° DWV JUNCTION (Moulded)	DN300	DN150	175	50	637	465
104A.300.150.45	300 X 150 X 45° DWV JUNCTION (Moulded)	DN300	DN150	175	76	637	518
104A.225.45	225 X 225 X 45° DWV JUNCTION (Moulded)	DN225	DN225	110	110	620	540
104A.300.45	300 X 300 X 45° DWV JUNCTION (Moulded)	DN300	DN300	175	175	802	683



DWV Sewer Fittings

Junction



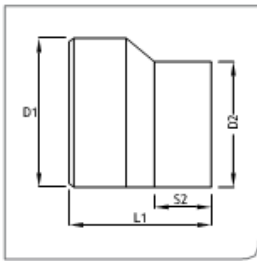
90° Junction DWV Sewer SCJ F+F

Code	Description	d1	d2	s1	s2	L1	L2
104A.225.90	225 X 225 X 90° DWV JUNCTION (Moulded)	DN225	DN225	110	110	500	396
104A.300.90	300 X 300 X 90° DWV JUNCTION (Moulded)	DN300	DN300	175	175	735	542



DWV Sewer Fittings

Level Invert



Level Invert taper dwV Sewer SCJ M+F (Level invert reducer)

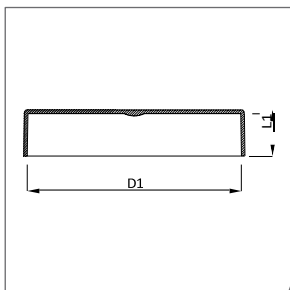
Code	Description	d1	d2	s2	L1
123A.225.100	225 X 100 DWV LEVEL INVERT TAPER (Moulded)	DN225	DN100	50	270
123A.225.150	225 X 150 DWV LEVEL INVERT TAPER (Moulded)	DN225	DN150	76	270
123A.300.100	300 X 100 DWV LEVEL INVERT TAPER (Moulded)	DN300	DN100	50	350
123A.300.150	300 X 150 DWV LEVEL INVERT TAPER (Moulded)	DN300	DN150	76	350
123A.300.225	300 X 225 DWV LEVEL INVERT TAPER (Moulded)	DN300	DN225	110	298

Level Invert Tapers are supplied standard with major diameter SCJ Spigots and minor diameter SCJ Sockets. Please contact Aqualine for non-standard fitting formats and pricing.



DWV Sewer Fittings

End cap



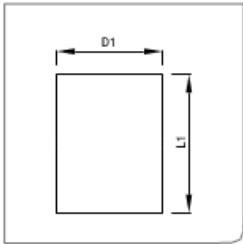
End Cap DWV Sewer SCJ F

Code	Description	d1	L1
137A.225	225mm DWV END CAP (Moulded)	DN225	54
137A.300	300mm DWV END CAP (Moulded)	DN300	54



DWV Sewer Fittings

Straight coupling



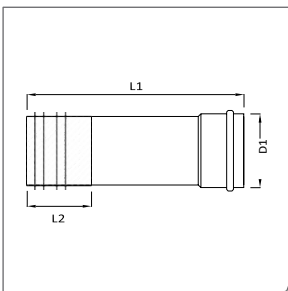
Straight Coupling DWV Sewer SCJ F+F

Code	Description	d1	L1
110A.225	225mm DWV COUPLING THREADED (Moulded)	DN225	226
110A.300	300mm DWV COUPLING (Moulded)	DN300	358



DWV Sewer Fittings

Access chamber coupling



access Chamber Coupling RRJ M+F (sanded Manhole Coupling)

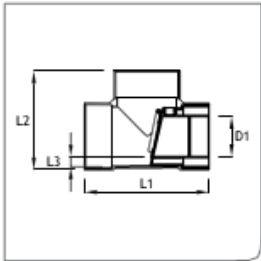
Code	Description	d1	L1	L2
ACCESS150500	150 X 500 ACCESS CHAMBER CONNECTOR (Sanded)	DN150	506	150

Access Chamber Couplings are fabricated to AS/NZS1260, with a 150mm long sanded end for keying to concrete access chambers. Unsanded and Unsocketed versions available upon request. Coupling length excluding socket is 500mm. Other lengths are available upon request. RRJ socket fitting with sanded spigot is standard. Please contact Aymroo for non-standard fitting formats and pricing.



DWV Sewer Fittings

Reflux Valve



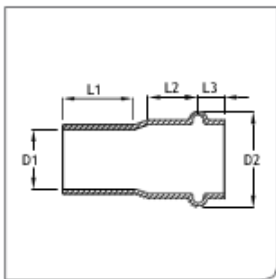
reflux Valve dwV Sewer SCJ F+F

Code	Description	d1	L1	L2	L3
REFLUX150	150mm REFLUX VALVE (Moulded)	DN150	660	396	40



DWV Sewer Fittings

Rubber Ring Adaptor



Rubber Ring Adaptor RRJ F+M

Code	description	d1	d2	L1	L2	L3
Msrr100	100mm RUBBER RING ADAPTOR	DN100	132	55	45	30
Msrr150	150mm RUBBER RING ADAPTOR	DN150	185	80	55	40
Msrr225	225mm RUBBER RING ADAPTOR	DN225	287	125	75	50
Msrr300	300mm RUBBER RING ADAPTOR	DN300	345	175	120	50

Rubber ring adaptors are formed from DWV pipe and supplied standard with a rubber ring socket, rubber ring and a spigot. Aymroo's Rubber Ring Adaptors are the ideal fitting to convert SCJ fittings to a rubber ring joint.