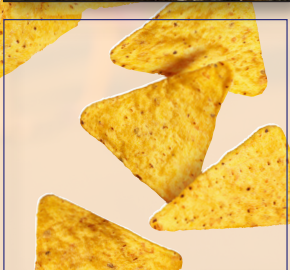


winco[®] BENCH MARK **USA**[™]

Concession Equipment and Supplies





POPCORN MACHINES



11040, 11060, & 11080



30010



STREET VENDOR™ POPCORN MACHINES

Take a walk down memory lane with "Street Vendor". Styled after old-time boardwalks of Coney Island and Palisades Park, they remind of an era when vendors sold popcorn on street corners all across America.

- ◆ Easy to use, simple two-switch operation
- ◆ Built-in heated warming deck and warmer light (bulb not included)
- ◆ Old maid drawer catches unpopped kernels
- ◆ Stainless steel food-zone
- ◆ Thick 20 mil non-stick coated popping kettle
- ◆ Tempered glass panels on front and side
- ◆ Clear plexiglass doors at rear

ITEM	OVERALL DIMENSIONS L" X D" X H" (mm)	POWER	PLUG	SHIP WEIGHT
11040	21 x 18 x 34 (534 x 457 x 864)	120V-60Hz, 1040W, 8.6A	NEMA 5-15P	62 lbs (28.1 kgs)
11060		120V-60Hz, 1240W, 10.3A		64 lbs (29 kgs)
11080		120V-60Hz, 1490W, 12.4A		66 lbs (30 kgs)

ITEM	DESCRIPTION	UOM	CASE
11040	4 oz Kettle	Set	1
11060	6 oz Kettle	Set	1
11080	8 oz Kettle	Set	1



Catch tray



Simple two-switch operation



Old maid drawer catches unpopped kernels

STREET VENDOR™ CART

- ◆ Spoked wheels and sturdy handle for easy transport
- ◆ Merchandising side shelf
- ◆ Operator-side storage & work space

ITEM	DESCRIPTION	UOM	CASE
30010	Cart/Trolley for Street Vendor Popcorn Machines 38" w x 23" d x 33" h	Set	1



Convenient storage compartment on service side

The product & package images shown are for illustration purposes and may differ from actual.

METROPOLITAN™ POPCORN MACHINES

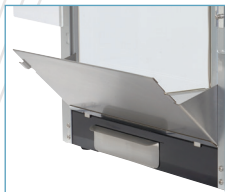
The design of "Metropolitan", inspired by the Art Deco style of the 1930's, brings a unique, attractive appeal.

- ◆ Easy to use, simple two-switch operation
- ◆ Built-in heated warming deck and warmer light (bulb not included)
- ◆ Old maid drawer catches unpopped kernels
- ◆ Stainless steel food-zone
- ◆ Thick 20 mil non-stick coated popping kettle
- ◆ Tempered glass panels on front and side
- ◆ Clear plexiglass doors at rear

ITEM	OVERALL DIMENSIONS L" X D" X H" (mm)	POWER	PLUG	SHIP WEIGHT
11045	18-½ x 14 x 30 (470 x 356 x 762)	120V-60Hz, 1040W, 8.6A	NEMA 5-15P	51 lbs (23.1 kgs)
11065		120V-60Hz, 1240W, 10.3A		52 lbs (23.6 kgs)

ITEM	DESCRIPTION	UOM	CASE
11045	4 oz Kettle	Set	1
11065	6 oz Kettle	Set	1

BENCHMARK USA™ POPCORN MACHINES



Catch tray



Simple two-switch operation

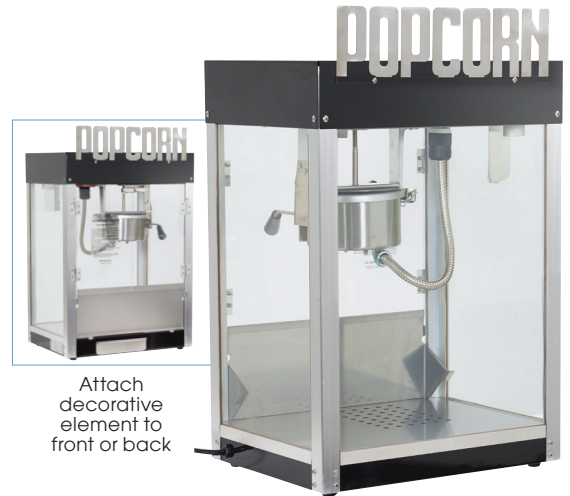


Old maid drawer catches unpopped kernels

METROPOLITAN™ PEDESTAL BASE

- ◆ 3" swivel casters for easy mobility
- ◆ Storage compartment with interior shelf & door

ITEM	DESCRIPTION	UOM	CASE
30050	Pedestal Base for Metropolitan Popcorn Machines 18-5/8"L x 14-1/4"D x 32-7/8"H	Set	1



Attach decorative element to front or back



11045 & 11065



Textured storage door handle



Convenient storage compartment on service side



30050

The product & package images shown are for illustration purposes and may differ from actual.

BENCHMARK USA
POPCORN MACHINES



PREMIERE™ POPCORN MACHINES

"Premiere" flavorful popped corn in big-screen style.

- ◆ Easy to use, simple two-switch operation
- ◆ Warmer light (bulb not included)
- ◆ Old-maid drawer catches unpopped kernels
- ◆ Stainless steel food-zone for easy cleaning
- ◆ Thick 20 mil non-stick coated popping kettle
- ◆ Tempered glass panels on front and side
- ◆ Clear plexiglass doors at rear

ITEM	OVERALL DIMENSIONS L" X D" X H" (mm)	POWER	PLUG	SHIP WEIGHT
11048	18-1/2 x 14 x 26-1/2	120V-60Hz, 940W, 7.8A	NEMA 5-15P	49 lbs (22.3 kgs)
11068	(470 x 356 x 673)	120V-60Hz, 1140W, 9.5A		50 lbs (22.7 kgs)

ITEM	DESCRIPTION	UOM	CASE
11048	4 oz Kettle	Set	1
11068	6 oz Kettle	Set	1



Catch tray



Simple two-switch operation



Old maid drawer catches unpopped kernels

PREMIERE™ PEDESTAL BASE

- ◆ 3" swivel casters for easy mobility
- ◆ Storage compartment with interior shelf

ITEM	DESCRIPTION	UOM	CASE
30080	Pedestal Base for Premiere Popcorn Machines 18-5/8"L x 14-1/4"D x 32-7/8"H	Set	1



11048 & 11068



30080



Convenient storage compartment on service side

The product & package images shown are for illustration purposes and may differ from actual.

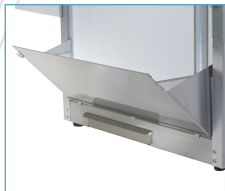
SILVER SCREEN™ POPCORN MACHINES

"Silver Screen" is simple in looking and is technically savvy. A separate cabinet thermostat and temperature indicator accurately controls the heat, ensuring that your popcorn is always at the perfect serving temperature.

- ◆ Stainless steel cabinet and food-zone
- ◆ Thermostatically controlled serving temperature
- ◆ Four-switch configuration allows for any operating situation
- ◆ Built-in warmer light (bulb not included)
- ◆ Old maid drawer catches unpopped kernels
- ◆ Superior performance hard-coat anodized, high thermal popping kettle

ITEM	OVERALL DIMENSIONS L" X D" X H" (mm)	POWER	PLUG	SHIP WEIGHT
11087	20 x 17 x 30 (508 x 432 x 762)	120V-60Hz, 1490W, 12.4A	NEMA 5-15P	60 lb (27.2 kgs)
11147	24 x 19 x 36 (610 x 483 x 915)	120V-60Hz, 1740W, 14.5A	NEMA 5-15P NEMA 5-20P (Canada)	95 lb (43.1 kgs)

ITEM	DESCRIPTION	UOM	CASE
11087	8 oz Kettle	Set	1
11147	14 oz Kettle	Set	1



Catch tray



Four-switch operation

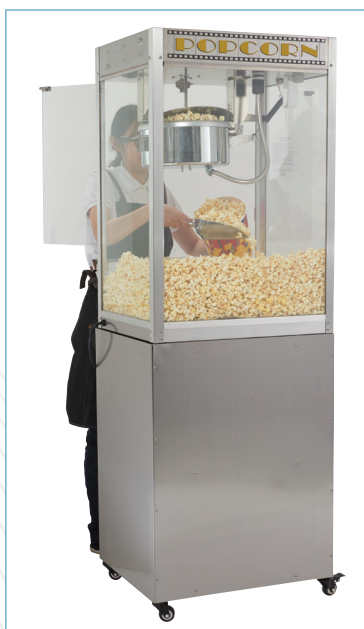


Old maid drawer catches unpopped kernels

SILVER SCREEN™ PEDESTAL BASE

- ◆ 3" locking swivel casters for easy mobility
- ◆ Storage compartment with interior shelf

ITEM	DESCRIPTION	UOM	CASE
30087	8 oz Pedestal Base 20"W x 17"D x 33"H	Set	1
30147	14 oz Pedestal Base 24"W x 20"D x 33"H	Set	1



Plenty of storage space



Convenient storage compartment on service side

BENCHMARK USA™ POPCORN MACHINES



11087



11147



11087 & 11147



30087



POPCORN SUPPLIES



MCP-4P



42030



PS-20



92001



72301



40004
40006
40008



40507



40012



40011



40015

POPCORN ACCESSORIES

ITEM	DESCRIPTION	UOM	CASE
MCP-4P	Measuring Cup Set, 4pcs, Wire Hdl, S/S	Set	12/48
PS-20	20 oz PC Scoop, Clear	Each	24/144
42030	Aluminum Speed Scoop	Each	50
72301	1oz Pump	Each	1
92001	Ultra Bright 12V LED Sign - POPCORN, 16"W x 1-1/4"D x 12"H	Each	1/5

POPCORN PORTION PACKS

ITEM	DESCRIPTION	UOM	CASE
40004	4oz - 24 packs/case	Case	1
40006	6oz - 24 packs/case	Case	1
40008	8oz - 24 packs/case	Case	1

BULK POPCORN KERNEL BAGS

ITEM	DESCRIPTION	UOM	CASE
40507	12.5 lb Bag - 4 Bags/Case	Case	1

UNPOPPED TO POPPED KERNEL CONVERSION

UNPOPPED KERNELS			POPPED POPCORN		
1 oz	2 Tbsp	1/8 cup	32 oz	1 Qt	4 cups
4 oz		1/2 cup	128 oz	4 Qts	16 cups
6 oz		3/4 cup	192 oz	6 Qts	24 cups
8 oz		1 cup	256 oz	8 Qts	32 cups

POPCORN POPPING OILS

ITEM	DESCRIPTION	UOM	CASE
40012	Canola Oil - Gallon	Each	4
40011	Coconut Oil - Gallon	Each	1
40015	Coconut Oil - 50 lb Pail	Each	1

POPCORN FLAVORINGS

ITEM	DESCRIPTION	UOM	CASE
40010	Buttery Salt - 35oz	Each	12
40017	Buttery Topping - 1 Gallon	Each	4
40021	Caramel Corn Glaze - 28oz	Each	12
40023	Cheddar Cheese Mix - 1 Gallon	Each	1



40017



40023



40010



40021

The product & package images shown are for illustration purposes and may differ from actual.

POPCORN PAPER BAGS

ITEM	DESCRIPTION	DIMENSIONS	PCS/CASE	UOM	CASE
41001	1oz	2" x 3.5" x 8"	1,000	Case	1
41002	1.5oz	2.5" x 4" x 8.25"	1,000	Case	1
41003	2oz	5.25" x 12"	1,000	Case	1



POPCORN SUPPLIES



4100X SERIES

POPCORN BUTTER BAGS

ITEM	DESCRIPTION	DIMENSIONS	PCS/CASE	UOM	CASE
41232CS	32oz, Red	4.25"L x 2.5"W x 7"H	1,000	Case	1
41246CS	46oz, Orange	4.5"L x 2.5"W x 8.25"H	1,000	Case	1
41285CS	85oz, Blue	5"L x 3.5"W x 9.5"H	1,000	Case	1
41230CS	130oz, Green	6"L x 3.75"W x 10.5"H	500	Case	1
41270CS	170oz, Purple	7.5"L x 3.75"W x 10.75"H	500	Case	1



412XXCS SERIES

POPCORN TAPERED SCOOP BOXES

ITEM	DESCRIPTION	DIMENSIONS	PCS/CASE	UOM	CASE
41044CS	0.75oz	3.5"W x 3.5"D x 6"H	500	Case	1
41047CS	1.25oz	3.5"W x 3.5"D x 7.5"H	500	Case	1
41048CS	2.5oz	4"W x 4"D x 8"H	500	Case	1



4104XCS SERIES

CLOSED-TOP POPCORN BOXES

ITEM	DESCRIPTION	DIMENSIONS	PCS/CASE	UOM	CASE
41549CS	0.75oz	4"W x 2"D x 6.5"H	500	Case	1
41557CS	0.95oz	4.25"W x 2"D x 7"H	500	Case	1
41563CS	1.25oz	4.75"W x 2"D x 7.5"H	500	Case	1
41569CS	2.0oz	5.75"W x 2"D x 8.5"H	500	Case	1
41574CS	2.5oz	5.75"W x 2.5"D x 8.5"H	250	Case	1



415XXCS SERIES

POPCORN TUBS

ITEM	DESCRIPTION	DIMENSIONS (W = ATTOP)	PCS/CASE	UOM	CASE
41432CS	32oz	4.5"W x 5.75"H	500	Case	1
41446CS	46oz	4.75"W x 7"H	600	Case	1
41485CS	85oz	7"W x 6.5"H	300	Case	1
41430CS	130oz	7.5"W x 8.25"H	300	Case	1
41470CS	170oz	7.5"W x 10"H	150	Case	1



414XXCS SERIES

The product & package images shown are for illustration purposes and may differ from actual.



COTTON CANDY MACHINES & SUPPLIES

60 cones per hour



ETL Intertek

ZEPHYR™ COTTON CANDY MACHINE - PORTABLE

Easy to operate and produce up to 60 cones per hour, great for "on demand" service.

- ◆ Lightweight design with two handles for easy transport
- ◆ Stainless steel 20-1/2" dia bowl locks securely onto base
- ◆ Spinner head easily removes for cleaning
- ◆ Low vibration 1.2hp heavy-duty belt drive motor and replacement belt

ITEM	OVERALL DIMENSIONS L" X D" X H" (mm)	POWER	PLUG	SHIP WEIGHT
81011A	21 x 21 x 16 (534 x 534 x 406)	120V-60Hz, 1080W, 9A	NEMA 5-15P	28 lbs (12.7 kgs)

ITEM	DESCRIPTION	UOM	CASE
81011A	Zephyr Cotton Candy Machine	Set	1
CCM-28C	Clear Plastic Dome Cover 21"Dia x 14"H	Each	1/5

Includes floss sugar scooper



ZEPHYR™ COTTON CANDY MACHINE CART

Stylish and convenient cotton candy trolley with ample work space and storage.

- ◆ Fits the Zephyr cotton candy machine
- ◆ Operator side storage shelf
- ◆ 3 cone holders integrated on side shelf

ITEM	DESCRIPTION	UOM	CASE
30090	Cart/Trolley 60" L x 24" D x 32" H	Set	1



8200XCS-SERIES

COTTON CANDY SUGAR FLOSS

- ◆ 6 cartons/case

ITEM	DESCRIPTION	UOM	CASE
82001CS	Blue Raspberry 3.25lb carton,	Case	1
82002CS	Bubblegum 3.25lb carton	Case	1
82003CS	Cherry 3.25lb carton	Case	1
82004CS	Grape 3.25lb carton	Case	1
82005CS	Pink Vanilla 3.25lb carton	Case	1
82006CS	Strawberry 3.25lb carton	Case	1



83007

COTTON CANDY PAPER CONES

ITEM	DESCRIPTION	UOM	CASE
83005	1,000 Cones/Pack	Pack	1



83001CS

COTTON CANDY POLY BAGS

ITEM	DESCRIPTION	UOM	CASE
83001CS	Poly Bags -1,000 Bags/Case	Case	1

The product & package images shown are for illustration purposes and may differ from actual.

HOT BEVERAGE/TOPPING DISPENSER

This 5-quart capacity heated dispenser uses rotating paddles, making it perfect for nacho cheese, butter topping, hot chocolate, au jus, and more.

- ◆ 1.3 gallon (5L) capacity
- ◆ Removable, clear polycarbonate bowl, safe for refrigerated storage of unused product
- ◆ Easy-to-disassemble tap
- ◆ Adjustable thermostat up to 194°F (90°C)
- ◆ Rotating mixing paddles to prevent product separation
- ◆ Easy-to-clean removable drip tray
- ◆ Includes 2 replacement bowl sealing rings

OVERALL DIMENSIONS L" X D" X H" (mm)	POWER	PLUG	SHIP WEIGHT
10 x 13 x 20 (254 x 330 x 508)	120V-60Hz, 1100W, 9.2A	NEMA 5-15P	15 lbs (6.8 kgs)

ITEM	DESCRIPTION	UOM	CASE
21011	Hot Beverage/ Topping Dispenser	Each	1/2



HOT BEVERAGE/TOPPING DISPENSER

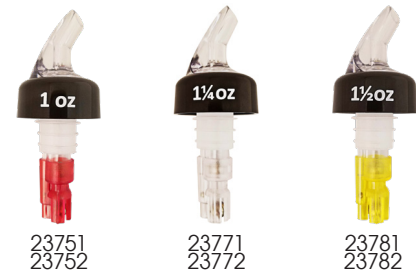


EXACT™ MEASURED POURERS

3-ball technology provides the most exact pour in the industry.

ITEM	DESCRIPTION	PCS/PACK	UOM	CASE
23751	1 oz, Red Tail	2	Pack	12/144
23771	1-1/4 oz, Clear Tail	2	Pack	12/144
23781	1-1/2 oz, Yellow Tail	2	Pack	12/144
23752	1 oz, Red Tail	12	Pack	1/25
23772	1-1/4 oz, Clear Tail	12	Pack	1/25
23782	1-1/2 oz, Yellow Tail	12	Pack	1/25

POURERS



EXACT™ SCREENED POURERS

Collared screened pourers allow for continuous free-flow pouring while preventing fruit flies/bugs from entering the bottle.

ITEM	DESCRIPTION	PCS/PACK	UOM	CASE
23210	Clear	12	Pack	1/25



EXACT™ FREE-FLOW POURER

ITEM	DESCRIPTION	PCS/PACK	UOM	CASE
23410	Free Flow Pourers	12	Pack	1



The product & package images shown are for illustration purposes and may differ from actual.



SNOW CONE MACHINES

500lbs of ice per hour



CE
ETL US ETL Intertek Intertek
71000



30070



CE
ETL US ETL Intertek Intertek
71050



74001

SNOW CONE MACHINES

Durable and efficient, the high-volume output keeps up with busy snack bars, convenience stores, and concession stands.

- ◆ Heavy-duty 1/3hp 1700RPM motor produces up to 500 lbs (227kg) of shaved ice per hour
- ◆ Accepts cubed or chunk ice
- ◆ Cast aluminum horn, cutting head, pusher
- ◆ Adjustable stainless steel cutting blades for fine or coarse shaved ice
- ◆ Pulse-type safety reset switch prevents accidental start-up

"SNOW BANK" SNOW CONE MACHINE

- ◆ Tinted tempered glass panels
- ◆ Stainless steel cabinet with tempered glass panels
- ◆ Built-in snow cone shaper for perfect snow cones
- ◆ Plexiglass service door and molded plastic drainage deck with drain hose

OVERALL DIMENSIONS L" X D" X H" (mm)	POWER	PLUG	SHIP WEIGHT
16 x 16 x 24 (407 x 407 x 610)	120V~60Hz, 250W, 2.08A	NEMA 5-15P	62 lbs (28.1 kgs)

ITEM	DESCRIPTION	UOM	CASE
71000	Snow Bank Professional Snow Cone Machine	Set	1

"SNOW BANK" SNOW CONE CART

- ◆ Add mobility to "Snow Bank" snow cone machine
- ◆ Spoked wheels and sturdy handle for easy transport
- ◆ Shelf and operator side storage

ITEM	DESCRIPTION	UOM	CASE
30070	Cart for Snow Bank Snow Cone Machine 38"L x 23"D x 33"H	Set	1

"SNOW BLITZ" SNOW CONE MACHINE - PORTABLE

- ◆ Compact heavy-duty stainless steel construction
- ◆ Integrated carry handles for easy transport
- ◆ Includes 1 freezer-safe ice tote

OVERALL DIMENSIONS L" X D" X H" (mm)	POWER	PLUG	SHIP WEIGHT
22-7/8 x 18 x 18-1/2 (580 x 456 x 470)	120V~60Hz, 250W, 2.08A	NEMA 5-15P	58 lb (26.3 kgs)

ITEM	DESCRIPTION	UOM	CASE
71050	Snow Blitz Portable Snow Cone Machine	Set	1
74001	Ice Tote Box 20.5"L x 15.3"D x 7"H	Each	1

The product & package images shown are for illustration purposes and may differ from actual.

SNOW CONE SYRUPS - 1 GALLON

◆ 4 gallons/case

ITEM	DESCRIPTION	UOM	CASE
72001CS	Blue Raspberry	Case	1
72002CS	Cherry	Case	1
72003CS	Grape	Case	1
72004CS	Lemon	Case	1
72005CS	Lime	Case	1
72006CS	Strawberry	Case	1
72007CS	Red Raspberry	Case	1
72008CS	Bubblegum	Case	1
72009CS	Green Apple	Case	1
72010CS	Root Beer	Case	1
72011CS	Orange	Case	1
72012CS	Fuzzy Navel	Case	1
72301	1 oz Pump	Each	1



72301

BENCHMARK USA

SNOW CONE SUPPLIES



72002CS



72001CS



72005CS



72004CS



72012CS

SNOW CONE ACCESSORIES

ITEM	DESCRIPTION	UOM	CASE
72305	Snow Cone Scoop, S/S	Each	1
72401CS	Snow Cone Spoon Straws (assorted colors), 10,000 pcs/case	Case	1
72501	6 oz Paper Snow Cone Cups 1,000 pcs/pack	Pack	1
72701	Snow Cone Paper Cup Dispenser	Each	1

Syrups,
pumps, cups,
scoops, &
straws!



72701

Shown with 6oz paper cups (sold separately)



72305



72401CS



72501

ULTRA-BRIGHT "SNOWCONES" LED SIGN

ITEM	DESCRIPTION	UOM	CASE
92003	Ultra-Brite Sign - Snowcones 17"L x 1-1/4"D x 13"H	Each	1/5



92003

The product & package images shown are for illustration purposes and may differ from actual.

CONCESSION EQUIPMENT & SUPPLIES



HOT DOG EQUIPMENT



"THE DOG HOUSE" HOT DOG COOKER & DISPENSER

Cooks, merchandises, and dispenses hot dogs in a space-efficient 15" footprint. The Doghouse minimizes product waste and is extremely easy to use and clean.

- ◆ Easy to follow Point-of-Sale graphic allows for full service or self service operation
- ◆ Steam cooks up to 24 hot dogs in 20-30 minutes
- ◆ Holds up to 24 hot dogs and 44 buns
- ◆ Compact all stainless steel construction - requires only 15" of counter space
- ◆ No tools required for fast breakdown, easy to clean
- ◆ Adjustable thermostat for precise cooking
- ◆ First-in first-out dispensing
- ◆ Large 10Qt (9.5L) water reservoir, with low-water indicator light and safety shutoff

Holds 24 hot dogs and 44 buns



OVERALL DIMENSIONS L" X D" X H" (mm)	POWER	PLUG	SHIP WEIGHT
15 x 23 x 26 (381 x 584 x 664)	120V-60Hz, 1000W, 8.33A	NEMA 5-15P	43 lbs (19.5 kgs)

ITEM	DESCRIPTION	UOM	CASE
60024	The Dog House Hot Dog Cooker & Dispenser	Set	1

Dispense a hot dog right into the bun!



#1 Remove a bun from the bun drawer



#2 Place the open bun in the bun tray



#3 Gently pull lever to dispense a hot dog into the bun



60024

"THE DOG POUND" HOT DOG STEAMER

Ideal for convenience stores, concession stands, snack bars, and cafeterias.

- ◆ Steams and holds 164 hot dogs and 36 buns
- ◆ Graphics on each side allow for front or rear counter merchandising
- ◆ Adjustable thermostat accommodates a variety of products and cooking conditions
- ◆ 7Qt (6.6L) water reservoir, with low-water indicator light and safety shutoff
- ◆ Tempered glass doors and food trays are removable for easy cleaning

Holds 164 hot dogs and 36 buns



OVERALL DIMENSIONS L" X D" X H" (mm)	POWER	PLUG	SHIP WEIGHT
15 x 16 x 19 (381 x 407 x 483)	120V-60Hz, 1000W, 8.33A	NEMA 5-15P	31 lbs (14.1 kgs)

ITEM	DESCRIPTION	UOM	CASE
60048	Dog Pound Hot Dog Steamer	Set	1



60048

HOT DOG ROLLER GRILLS

These high quality roller grills are available in 10, 20 & 30 hot dog capacities to meet any application. Stainless steel construction, removable drip trays and non-stick rollers ensure ease of cleaning. All of these grills feature a high-torque motor. 360 degree roller rotation insures evenly cooked hotdogs.

- ◆ Heavy-duty stainless steel body and removable drip tray for easy cleaning
- ◆ Heavy-duty sealed high-torque motor with bicycle chain drive
- ◆ Stainless steel non-stick rollers with sealed ends and continuous 360 degree rotation for even cooking
- ◆ Front and rear heat controllers (on 20 & 30 dog models) for cooking and holding options
- ◆ Accommodates any size hot dog, also sausage or breakfast links for expanded offerings

ITEM	OVERALL DIMENSIONS L" X D" X H" (mm)	POWER	PLUG	SHIP WEIGHT
62010	16 x 13 x 8 (407 x 330 x 203)	120V-60Hz, 660W, 5.5A	NEMA 5-15P	22 lbs (10 kgs)
62020	22 x 16 x 8 (559 x 406 x 203)	120V-60Hz, 860W, 7.2A		29 lbs (13.2 kgs)
62030	22 x 20 x 8 (559 x 508 x 203)	120V-60Hz, 1160W, 9.7A		35 lbs (15.9 kgs)

ITEM	DESCRIPTION	UOM	CASE
62010	Holds 10 Dogs	Set	1
62020	Holds 20 Dogs	Set	1
62030	Holds 30 Dogs	Set	1



62020, 64020, 65020



HOT DOG ROLLER GRILLS & SNEEZE GUARDS



62010



62020



62030



HOT DOG ROLLER SNEEZE GUARDS

ITEM	DESCRIPTION	UOM	CASE
64010	Sneeze Guard for 10 Dog Roller Grill	Set	10
64020	Sneeze Guard for 20 Dog Roller Grill	Set	10
64030	Sneeze Guard for 30 Dog Roller Grill	Set	10



64010

HOT DOG ROLLER BUN DRAWERS - UNHEATED

ITEM	DESCRIPTION	UOM	CASE
65010	Bun Box for 10 Dog Roller Grill	Set	1
65020	Bun Box for 20 Dog Roller Grill	Set	1
65030	Bun Box for 30 Dog Roller Grill	Set	1



65010

The product & package images shown are for illustration purposes and may differ from actual.



HOT DOG EQUIPMENT



Holds 60 hot dogs and 30 buns



MINI CART HOT DOG STEAMER, 120V

Guaranteed to grab your guests' attention, this unit features wheels and an umbrella that mimic the carts found along vibrant city streets.

- ◆ Holds 60 hot dogs and 30 buns
- ◆ Mirror finish 18/8 stainless steel body
- ◆ Adjustable thermostat for cooking and holding
- ◆ Includes 1 solid half-size pan with domed lid for warming buns and 1 half-size perforated pan with flat lid for steaming hot dogs
- ◆ Outfitted with Point-of-Sale graphics, umbrella, wheels

OVERALL DIMENSIONS L" X D" X H" (mm)	POWER	PLUG	SHIP WEIGHT
21-1/2 x 13-1/4 x 16 (546 x 336 x 406) Umbrella: 35-3/4"H (908mm)	120V~60Hz, 1200W, 10A	NEMA 5-15P	33 lbs (15 kgs)

ITEM	DESCRIPTION	UOM	CASE
60072	Mini Cart Hot Dog Steamer	Set	1



52001

STAINLESS STEEL CONDIMENT STATION / DISPENSER

- ◆ Insulated condiment rail and stay-open cover
- ◆ Pump wells fit #10 cans, 1.5 gallon containers, or 3qt jars
- ◆ Includes 2 ice packs, 2 pumps, & 3 ninth-size 4" deep pans

ITEM	DESCRIPTION	UOM	CASE
52001	Benchmark Condiment Station / Dispenser 27"L x 8"D x 15"H	Set	1



PKTS-2D

BPA FREE PKTS-SERIES

18/8 STAINLESS STEEL CONDIMENT DISPENSER

- ◆ Two (2) 3-1/2 Qt plastic fountain jars included (7 Qt total)
- ◆ Each pump dispenses between 1 oz and 1-1/4 oz portions, depending on thickness of condiments
- ◆ Overall dimensions: 11"L x 8-3/4"W x 16"H (with pump)

ITEM	DESCRIPTION	UOM	CASE
PKTS-2D	Condiment Dispenser with 2 Standard Pumps	Set	1
PKTS-PT01	Individual Pump with Lid	Each	20
PKTS-PT02	Replacement Plastic Fountain Jar	Each	6
PKTS-PT03	Stainless Steel Casing	Each	1



68002



68001CS



PT-9 & 67002



68004CS

HOT DOG ACCESSORIES

ITEM	DESCRIPTION	PCS/CASE	UOM	CASE
PT-9	9" Pom Tongs, S/S		Doz	4/24
67002	Stainless Steel Tongs Holder		Each	50
68001CS	Paper Hot Dog Bags	5,000	Case	1
68002	Foil Hot Dog Bags	1,000	Case	1
68004CS	Fluted Paper Hotdog Trays	3,000	Case	1



92002

ULTRA-BRIGHT "HOTDOGS" LED SIGN

ITEM	DESCRIPTION	UOM	CASE
92002	Ultra-Brite Sign - Hotdogs 20"L x 1-1/4"D x 13"H	Each	1/5

100 QUART FOOD WARMER / MERCHANDISER

Holds and warms nacho chips, peanuts, or popcorn

- ◆ 100 quart capacity for large or small batch use
- ◆ Merchandising signs include: "Nacho Chips", "Peanuts", and "Popcorn". Signs mount to front or back of unit
- ◆ Top-load door with a deflection board that prevents product breakage when refilling
- ◆ Built-in heating element in the base keeps contents warm and fresh
- ◆ Aluminum and tempered glass construction for durability and easy cleaning

OVERALL DIMENSIONS L" X D" X H" (mm)	POWER	PLUG	SHIP WEIGHT
15 x 15 x 30-1/2 (381 x 381 x 775)	120V~60Hz, 100W, 0.83A	NEMA 5-15P	41 lbs. (18.6 kgs)

ITEM	DESCRIPTION	UOM	CASE
51000	100 Quart Food Warmer / Merchandiser with Three Signs	Set	1

BENCHMARK USA

NACHO WARMERS & SUPPLIES



51000

26 GALLON TORTILLA CHIP WARMER

- ◆ Large 26 gallon (98L) capacity
- ◆ Insulated stainless steel construction
- ◆ Adjustable thermostat with 90°-180°F (32°-82°C) temperature range
- ◆ Digital temperature indicator
- ◆ Convection heating fan
- ◆ Removable front access service door
- ◆ Top-load double hinged doors
- ◆ Adjustable 4" legs

OVERALL DIMENSIONS L" X D" X H" (mm)	POWER	PLUG	SHIP WEIGHT
23 x 23 x 29 (584 x 584 x 734)	120V~60Hz, 755W, 6.3A	NEMA 5-15P	77 lbs (35 kgs)

ITEM	DESCRIPTION	UOM	CASE
51026	26 Gallon Tortilla Chip Warmer	Set	1



51026

NACHO ACCESSORIES

ITEM	DESCRIPTION	PCS/PACK	UOM	CASE
47001	Combo Serving Trays	250	Case	1
53021	Plastic Nacho Trays, 5" x 6"	500	Case	1



53021



Note: serving tray style may vary from shown

47001

ULTRA-BRIGHT "NACHOS" LED SIGN

ITEM	DESCRIPTION	UOM	CASE
92004	Ultra-Brite Sign - Nachos 16"L x 1-1/4"D x 17"H	Set	1/5



92004



HEATED DISPLAY MERCHANDISERS

PASS-THROUGH TWO-DOOR WARMERS/MERCHANDISERS

These versatile 2-Door Warmers /Merchandisers are ideal for front or rear counter applications. The operator side has the controls and a door for easy loading. The customer side door makes it a self-serve unit.

- ◆ Two doors for front or rear counter applications
- ◆ Attractive graphics for point-of-sale merchandising



51040
Fits up to 12" diameter pizza

PASS-THROUGH WARMERS/MERCHANDISERS

- ◆ Adjustable thermostat, 450 watt element
- ◆ Stainless steel and aluminum construction
- ◆ Tempered glass panels and doors
- ◆ Chrome-plated racks with adjustable installation - either lay flat or slanted

ITEM	OVERALL DIMENSIONS L" X D" X H" (mm)	POWER	PLUG	SHIP WEIGHT
51040	16 x 16 x 23 (407 x 407 x 584)	120V~60hz, 600W, 5A	NEMA 5-15P	40 lbs (18.2 kgs)
51048	23 x 23 x 25½ (584 x 584 x 648)			62 lbs (28.1 kgs)

ITEM	DESCRIPTION	UOM	CASE
51040	12" Warmer/Merchandiser	Set	1
51048	18" Warmer/Merchandiser	Set	1



51048
Fits up to 18" diameter pizza



ULTRA-BRITE "PIZZA" LED SIGN



92006

ITEM	DESCRIPTION	UOM	CASE
92006	Ultra-Brite Sign - Pizza	Each	1/5

PASS-THROUGH ROTATING DISPLAY WARMERS/MERCHANDISERS

- ◆ Heated cabinet with passive humidity control
- ◆ Stainless steel and tempered glass
- ◆ Adjustable thermostat with cabinet temperature readout
- ◆ Dual fixture interior illumination (bulbs not included)
- ◆ Includes chrome-plated 5-tier round pan rack (pizza) and hook rack (pretzels, churros)
- ◆ Continuous rotating rack stops when either door opens
- ◆ Adjustable 4" legs

ITEM	OVERALL DIMENSIONS L" X D" X H" (mm)	POWER	PLUG	SHIP WEIGHT
51012	18-1/8 x 22 x 33 (460 x 559 x 838)	120V~60Hz, 1560W, 13A	NEMA 5-15P	86 lbs (39 kgs)
51018	24-1/2 x 27 x 33 (622 x 686 x 838)			117 lbs (53.1 kgs)

ITEM	DESCRIPTION	UOM	CASE
51012	12" Warmer/Merchandiser	Set	1
51018	18" Warmer/Merchandiser	Set	1



51018
Shown with 18"
pizza round rack
installed



51012
Shown with
12" hook rack
installed



MULTI-FUNCTION OVENS (SALAMANDER/BAKER/OVEN)

- ◆ Adjustable thermostat with temperature range of 90°-550°F
- ◆ Fully insulated stainless steel construction
- ◆ Independent top & bottom heater switches
- ◆ 60 minute timer with "Stay On" feature
- ◆ Adjustable 3" legs
- ◆ Easily fits pizza's up to 12" (54012), 16" (54016) diameter

ITEM	OVERALL DIMENSIONS L" X D" X H" (mm)	POWER	PLUG	SHIP WEIGHT
54012	23 x 17 x 11-1/4 (584 x 432 x 254)	120V~60Hz, 1750W, 14.6A	NEMA 5-15P	35 lbs (15.9 kgs)
54016	27 x 17 x 11-1/4 (686 x 432 x 254)			39 lbs (17.7 kgs)

ITEM	DESCRIPTION	UOM	CASE
54012	12" x 3" Opening	Set	1
54016	16" x 3" Opening	Set	1

MULTI-FUNCTION OVENS





FOOD WARMERS



CE
ETL US
Intertek
51096

STAINLESS STEEL FOOD WARMER

This warmer accepts most popular warmer pans, adaptors and lids. The adjustable thermostat allows for virtually any type of cooking or holding condition.

- ◆ Mirror finish 18/8 stainless steel body
- ◆ Precise control adjustable thermostat
- ◆ Includes two-hole adaptor plate for 7Qt inserts
- ◆ Accepts all standard pans, adaptors and lids
- ◆ Water-resistant covered power switch
- ◆ 3-1/2" adjustable legs

OVERALL DIMENSIONS L" x D" x H" (mm)	POWER	PLUG	SHIP WEIGHT
13-1/4 x 21-1/2 x 12-1/2 (336 x 546 x 318)	120V-60Hz, 1200W, 10A	NEMA 5-15P	22 lbs (10 kgs)
WELL OPENING L" x D" x H" (mm)			
12 x 20 x 6-1/4 (305 x 508 x 159)			

ITEM	DESCRIPTION	UOM	CASE
51096	1200W Warmer	Set	1



CE
ETL US
Intertek
5107XP-SERIES

DUAL-WELL FOOD WARMERS (PLAIN SIDES WITHOUT GRAPHIC)

ITEM	OVERALL DIMENSIONS L" x D" x H" (mm)	POWER	PLUG	SHIP WEIGHT
51072P	21-1/2 x 13-1/4 x 17 (546 x 336 x 432)*	120V-60Hz, 1200W, 10A	NEMA 5-15P	27 lbs (12.3 kgs)
51073P				28 lbs (12.7 kgs)
51074P				30 lbs (13.6 kgs)

**Pump models 20" (508mm) height*

ITEM	DESCRIPTION	UOM	CASE
51072P	Warmer with 2 Ladles/Lids	Set	1
51073P	Warmer with 1 Pump & 1 Ladle/Lid	Set	1
51074P	Warmer with 2 Pumps	Set	1



FOOD WARMER ACCESSORIES

ITEM	DESCRIPTION	UOM	CASE
SPHP4	Half-Size Perforated Steam Pan, 4", 25 Ga S/S	Each	6/24
SPJM-204	Half-Size Anti-Jam Steam Pan, 4", 24 Ga S/S	Each	6/24
SPSCH	Half-Size Steam Pan Cover, Solid	Each	12/48
C-DCH	Half-Size Dome Cover, S/S	Each	24
LDI-3	3 oz Ladle, S/S	Each	12/120
ADP-808	Adaptor Plate w/ Two Holes (7qt), S/S	Each	10
INS-7.0M	7 Qt Inset Pan, S/S	Each	6/24
INSH-7	Hinged Inset Cover, S/S	Each	6/24
56752	Condiment Pump for 7 Quart Inset Pan, S/S	Each	1/10



Themed Warmers

Themed warmers offer style and flexibility with attractive graphics for point-of-sale merchandising, and multiple insert configurations to meet operational needs.



THEMED FOOD WARMERS

"CHICKEN WINGS" WARMER

- ◆ 2 half size pans, 2 domed lids, tongs and tongs holder

OVERALL DIMENSIONS L" x D" x H" (mm)	POWER	PLUG	SHIP WEIGHT
21-½ x 13-¼ x 16 (546 x 336 x 406)	120V-60Hz, 1200W, 10A	NEMA 5-15P	27 lbs (12.3 kgs)

ITEM	DESCRIPTION	UOM	CASE
51072W	Chicken Wings Warmer	Set	1



51072W

"CHILI & CHEESE" WARMER

ITEM	OVERALL DIMENSIONS L" x D" x H" (mm)	POWER	PLUG	SHIP WEIGHT
51072A	21-½ x 13-¼ x 17 (546 x 336 x 432)*	120V-60Hz, 1200W, 10A	NEMA 5-15P	27 lbs (12.3 kgs)
51073A				28 lbs (12.7 kgs)
51074A				30 lbs (13.6 kgs)

*Pump models 20" (508mm) height

ITEM	DESCRIPTION	UOM	CASE
51072A	Warmer with 2 Ladles/Lids	Set	1
51073A	Warmer with 1 Pump & 1 Ladle/Lid	Set	1
51074A	Warmer with 2 Pumps	Set	1



51074A

"HOT FUDGE & CARAMEL" WARMER

ITEM	OVERALL DIMENSIONS L" x D" x H" (mm)	POWER	PLUG	SHIP WEIGHT
51072H	21-½ x 13-¼ x 17 (546 x 336 x 432)*	120V-60Hz, 1200W, 10A	NEMA 5-15P	27 lbs (12.3 kgs)
51073H				28 lbs (12.7 kgs)
51074H				30 lbs (13.6 kgs)

*Pump models 20" (508mm) height

ITEM	DESCRIPTION	UOM	CASE
51072H	Warmer with 2 Ladles/Lids	Set	1
51073H	Warmer with 1 Pump & 1 Ladle/Lid	Set	1
51074H	Warmer with 2 Pumps	Set	1



51073H

"DELICIOUS SOUPS" WARMER

OVERALL DIMENSIONS L" x D" x H" (mm)	POWER	PLUG	SHIP WEIGHT
21-½ x 13-¼ x 17 (546 x 336 x 432)	120V-60Hz, 1200W, 10A	NEMA 5-15P	27 lbs (12.3 kgs)

ITEM	DESCRIPTION	UOM	CASE
51072S	Soup Station, 2 Ladles & Lids	Set	1



51072S



Foodservice Supplies

Division of The Foodware Group™

Phone: 1-888-946-2682

Fax: 1-973-916-9959

Email: cs@wincous.com

Web: www.wincous.com

**NEW JERSEY
HEADQUARTERS**

65 Industrial Road, Lodi, NJ 07644

**FLORIDA SHOWROOM &
DISTRIBUTION CENTER**

10800 NW 103rd Street,
Bldg 22, Ste 11, Miami, FL 33178

**NEVADA
DISTRIBUTION CENTER**

3777 Marion Drive, Las Vegas, NV 89115



www.thefoodwaregroup.com

WINBM-NP
BENCHMARK USA™ BROCHURE



8 42169 15216 5

07/2023

*Check your Order Status
online at www.wincous.com*

©Winco®, All Rights Reserved