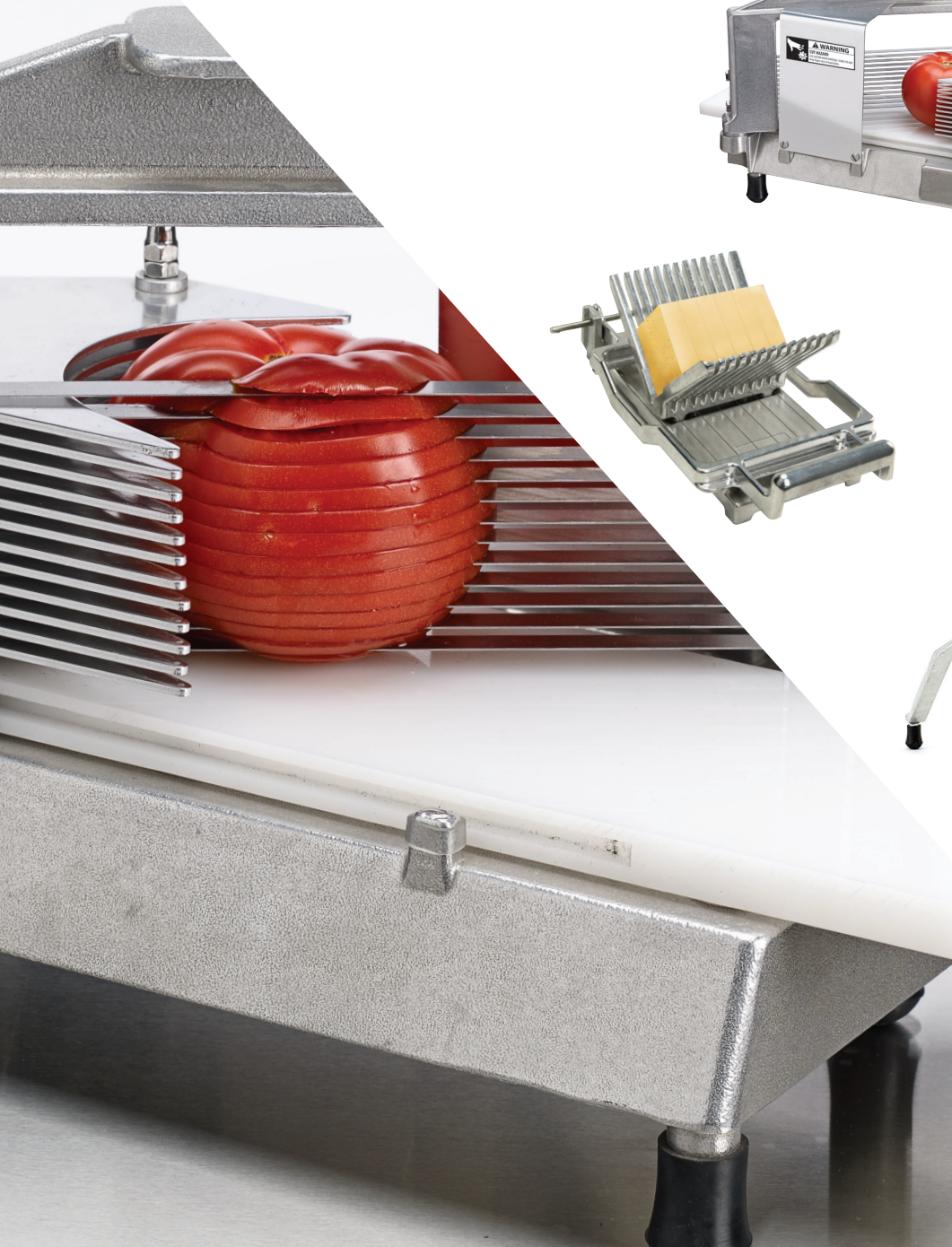




*Make Daily Kitchen Tasks Efficient with*

**winco<sup>®</sup>**  
**KATTEX<sup>™</sup>**

**MANUAL FOOD PREPARATION  
EQUIPMENT**



### HEAVY-DUTY CAST IRON MEAT GRINDER

The Winco manual meat grinder is an economical and reliable tool for all your meat processing needs. With interchangeable plates, make your own sausages, burgers and more.



MG-10

- ◆ Large 3" by 4" (76 x102 mm) hopper opening
- ◆ Heavy-duty cast iron construction with food-safe tinned coating
- ◆ Durable cast iron grinding knife
- ◆ Easy to crank handle with comfortable grip features long-lasting heavy-duty nylon bearing
- ◆ Two (2) grinding plates: medium grind 3/16"(4mm), coarse grind 5/16"(8mm)
- ◆ Sausage stuffing kit with three (3) stuffing tubes: 9/16"(14mm), 3/4"(19 mm), & 15/16"(24 mm), stuffing star, and flange
- ◆ Clamp base secures easily to countertop or work surface



ITEM	DESCRIPTION	UOM	CASE	OVERALL DIMENSIONS L" X D" X H" (mm)	SHIP WEIGHT
MG-10	Meat Grinder with Clamp Base	Set	1/10	10 x 4-1/4 x 8-7/8 (254 x 108 x 226)	5.5 lbs (2.5 kg)

### MEAT GRINDER ACCESSORIES

ITEM	DESCRIPTION	UOM	CASE
MG-1018	Grinder Plate, 1/8" (3mm)	Each	100
MG-10316	Grinder Plate, 3/16" (4mm)	Each	100
MG-1014	Grinder Plate, 1/4" (6mm)	Each	100
MG-10516	Grinder Plate, 5/16" (8mm)	Each	100
MG-1038	Grinder Plate, 3/8" (10mm)	Each	100
MG-10K	Grinder Knife	Each	100
MG-10SSK	Sausage Stuffing Kit - 1 Flange & 3 Tubes	Each	100

### HEAVY-DUTY BURGER PATTY PRESS WITH INTERCHANGEABLE PLATES

Effortlessly make uniform burgers with this time-saving portion control molding press. Interchangeable plates make either 4" (1/4 lb) or 5" (1/2 lb) round patties.



HBP-3

- ◆ Heavy-duty anodized aluminum construction with stainless steel press bowls and press plates
- ◆ Manual single-lever operation for quick, easy press-and-release uniform patties
- ◆ Interchangeable 4" (100mm) and 5" (130mm) press plates & bowls; removal tool included
- ◆ Built-in patty paper holder, and includes 500 each of both 4" and 5" diameter patty paper



ITEM	DESCRIPTION	UOM	CASE	OVERALL DIMENSIONS L" X D" X H" (mm)	SHIP WEIGHT
HBP-3	Hamburger Patty Press	Set	1	10 x 9-1/2 x 12-3/4 (254 x 241 x 324)	18.1 lbs (8.2 kg)

### BURGER PATTY PRESS ACCESSORIES

ITEM	DESCRIPTION	UOM	CASE
HBP-PR100	4" (100mm) Perforated Round Patty Paper, Case of 5000	Case	1/10
HBP-PR130	5" (130mm) Perforated Round Patty Paper, Case of 5000	Case	1/10

**QUICK-SLICE HEAVY-DUTY FRENCH FRY CUTTERS**

Add speed and efficiency to slicing potatoes, and fruits & vegetables. The durable cast iron body construction with stainless steel components ensures the cutter will withstand years of high-volume, heavy-duty use.

- ◆ Press down on the short throw handle with comfortable grip for uniform cuts in one smooth stroke
- ◆ Extremely durable cast iron body with stainless steel components
- ◆ Affix to counter or wall mount; wall bracket sold separately
- ◆ 3-3/8" x 3-3/8" cutting area
- ◆ Accessories to modify cut sizes and styles sold separately

ITEM	DESCRIPTION	UOM	CASE	OVERALL DIMENSIONS L" X D" X H" (mm)	SHIP WEIGHT
HFC-250	1/4" Cut	Set	1		12.7 lbs (5.8 kgs)
HFC-375	3/8" Cut	Set	1	8 x 14 x 16 3/4 (203 x 356 x 426)	13.6 lbs (6.2 kgs)
HFC-500	1/2" Cut	Set	1		13.3 lbs (6 kgs)



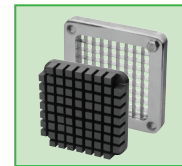
HFC-375



Wall mounted with HFC-BK

**FRENCH FRY CUTTER ACCESSORIES**

ITEM	DESCRIPTION	UOM	CASE
HFC-250R	1/4" Cut Replacement	Set	1/48
HFC-375R	3/8" Cut Replacement Blade	Set	1/48
HFC-500R	1/2" Cut Replacement Blade	Set	1/48
HFC-250B	1/4" Cut Blade Assembly	Set	1/24
HFC-375B	3/8" Cut Blade Assembly	Set	1/24
HFC-500B	1/2" Cut Blade Assembly	Set	1/24
HFC-250K	Pusher Block for 1/4" and 1/2" Cut Blade	Each	1/24
HFC-375K	Pusher Block for 3/8" Cut Blade	Each	1/24
HFC-BK	Wall Bracket for HFC series	Each	1/12



Replacement block and cut blade assembly

HFC-SERIES 

**MEDIUM-DUTY FRENCH FRY CUTTERS**

- ◆ Made of heavy-duty cast iron and fitted with sharp stainless steel blades for even slicing
- ◆ Ergonomic handles for easy operation, and sturdy legs for stability on countertop/work surfaces

ITEM	DESCRIPTION	UOM	CASE	OVERALL DIMENSIONS L" X D" X H" (mm)	SHIP WEIGHT
FFC-250	1/4" Cut	Each	1		
FFC-375	3/8" Cut	Each	1	8 x 14 x 16 3/4 (203 x 356 x 426)	11.6 lbs (5.3 kg)
FFC-500	1/2" Cut	Each	1		



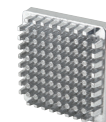
FFC-375

**MEDIUM-DUTY FRENCH FRY CUTTER ACCESSORIES**

ITEM	DESCRIPTION	UOM	CASE
FFC-250B	Blade Assembly for FFC-250	Each	24
FFC-250K	Pusher Block for FFC-250	Each	24
FFC-375B	Blade Assembly for FFC-375	Each	24
FFC-375K	Pusher Block for FFC-375	Each	24
FFC-500B	Blade Assembly for FFC-500	Each	24
FFC-500K	Pusher Block for FFC-500	Each	24
FFC-6B	6 Wedge Cut Blade Assembly	Each	1/24
FFC-6K	Pusher Block for FFC-6B	Each	1/24
FFC-8B	8 Wedge Cut Blade Assembly	Each	1/24
FFC-8K	Pusher Block for FFC-8B	Each	1/24
FFC-500P	Pusher Support for FFC-Series	Each	12
HFC-BK	Wall Bracket	Each	1/12



FFC-250B



FFC-250K



FFC-500P

### QUICK-SLICE FRUIT & VEGETABLE SLICER

Save on time and labor - simply place produce in the holder to turn out uniform slices in seconds.

- ◆ Aluminum construction with 9-1/4" stainless steel blade
- ◆ Adjustable thickness gauge - select from 1/16" (1mm) up to 1/2" (12mm) thick slicing
- ◆ Accommodates fruits/vegetables up to 4" diameter and 5-1/2" in length
- ◆ Mounting bracket included - mounts directly to work surface, or on the cutting board mount (CBM-1218)



FVS-1

ITEM	DESCRIPTION	UOM	CASE	OVERALL DIMENSIONS L" X D" X H" (mm)	SHIP WEIGHT
FVS-1	Fruit & Vegetable Slicer	Each	1/2	16 x 8-11/16 x 16 (406 x 220 x 406)	12.1 lbs (5.5 kgs)

### FRUIT & VEGETABLE SLICER ACCESSORIES

ITEM	DESCRIPTION	UOM	CASE
FVS-1B	2-Pc Replacement Blades	Set	1/10
FVS-1SB	Replacement Shaft and Blade Turntable Assembly	Each	1/6



Thickness gauge



Replacement blade



FVS-1 mounted to CBM-1218

### CUTTING BOARD MOUNT FOR FRUIT & VEGETABLE SLICER

Add portability to the KATTEX Fruit and Vegetable Slicer (FVS-1) with this customized STATIKBOARD™ cutting board mount. The molded-through, non-slip feet prevent slipping & sliding, even on wet countertops, and the fully-rubberized hook provides easy storage.

- ◆ Board size: 12" (30.5mm) x 18" (45.7mm) x 1/2" (1.3mm)
- ◆ Built-in hook for easy transport and hygienic storage
- ◆ Non-slip feet hold strong for stable
- ◆ Tough durable copolymer board is dishwasher safe
- ◆ Stainless steel flush mounting hardware included (mounting bracket sold separately, or comes with FVS-1)

ITEM	DESCRIPTION	UOM	CASE
CBM-1218	Cutting Board Mount for FVS-1	Each	1



STATIKboard™

Patented  
original design

NSF CBM-1218

## PRECISE-SLICE TOMATO SLICERS

Razor sharp stainless steel blades cradle delicate tomatoes, while smoothly and swiftly producing clean, uniform slices.

- ◆ Cast aluminum frame with stainless steel blades for even, clean cuts; blades are replaceable
- ◆ Ergonomic vertical handle provides smooth, effortless slicing
- ◆ Cuts 2 dozen tomatoes into 3/16" or 1/4" thick slices *in only 1 minute!*
- ◆ HDPE slicing surface for safe & durable food processing
- ◆ Rubber non-slip feet ensure maximum stability
- ◆ Slicers come standard with a stop/hold bracket



TTS-188

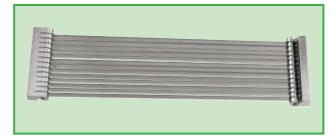


ITEM	DESCRIPTION	UOM	CASE	OVERALL DIMENSIONS L" X D" X H" (mm)	SHIP WEIGHT
TTS-188	3/16" Cut w/Straight Blade	Set	1/4		
TTS-188S	3/16" Cut w/Serrated Blade	Set	1/4	16½ x 8¼ x 9½	9.3 lbs
TTS-250	1/4" Cut w/Straight Blade	Set	1/4	(420 x 210 x 240)	(4.2 kgs)
TTS-250S	1/4" Cut w/Serrated Blade	Set	1/4		

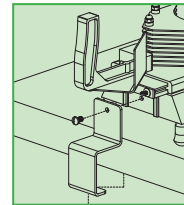
Includes blade replacement wrench



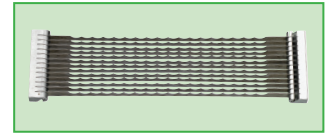
KAT-WR



TTS-188-B



Stop/hold bracket included



TTS-188S-B

## TOMATO SLICER ACCESSORIES

ITEM	DESCRIPTION	UOM	CASE
TTS-188-B	3/16" Straight Blade Assembly for TTS-188	Set	1/12
TTS-188S-B	3/16" Serrated Blade Assembly for TTS-188	Set	1/12
TTS-250-B	1/4" Straight Blade Assembly for TTS-250	Set	1/12
TTS-250S-B	1/4" Serrated Blade Assembly for TTS-250	Set	1/12
KAT-FE	4-Pc Replacement Feet Set	Set	1
KAT-WR	Dual-End Wrench	Each	1/25

TTS-SERIES

## QUICK-SLICE CHEESE SLICERS

Make light work of slicing a variety of semi-soft cheeses, with uniform, consistent results. Ideal for portion control and faster food prep.

- ◆ Cast aluminum construction with stainless steel wires
- ◆ Cutting area accommodates 1/3 of a 5 lb cheese block
- ◆ Cut 3/8" or 3/4" cheese sticks, cubes or slices
- ◆ Cleaning brush included



ITEM	DESCRIPTION	UOM	CASE	OVERALL DIMENSIONS L" X D" X H" (mm)	SHIP WEIGHT
TCT-375	3/8" Cut	Each	1/4	13¼ x 6¾ x 4½	4.2 lbs
TCT-750	3/4" Cut	Each	1/4	(335 x 170 x 115)	(1.9 kgs)



TCT-375

TCT-750

## CHEESE SLICER ACCESSORIES

ITEM	DESCRIPTION	UOM	CASE
TCT-375B	Replacement Bow for TCT-375	Set	1/10
TCT-750B	Replacement Bow for TCT-750	Set	1/10



TCT-375B  
3/8" wide cuts



TCT-750B  
3/4" wide cuts



Uniformly slice cheese blocks

TCT-SERIES



### QUICK-SLICE ONION/FRUIT/VEGETABLE SLICERS

Quickly produce evenly sliced coins of fruits and vegetables in a single smooth stroke.

- ◆ Aluminum construction with stainless steel blades
- ◆ Unique lever-handle allows for quick and easy operation
- ◆ Sturdy base with non-skid feet
- ◆ Two blades included can be stacked to create a finer cut
- ◆ 4-1/2" x 3-3/4" cutting area



OS-250



ITEM	DESCRIPTION	UOM	CASE	OVERALL DIMENSIONS L" X D" X H" (mm)	SHIP WEIGHT
OS-188	3/16" Cut	Each	1/2	19 x 10 x 19	17.8 lbs (8.1 kgs)
OS-250	1/4" Cut	Each	1/2	(483x 254 x 483)	

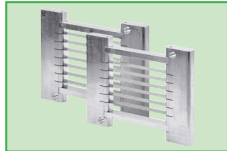
### SLICER ACCESSORIES

ITEM	DESCRIPTION	UOM	CASE
OS-188B	3/16" Blade Set Assembly for OS-series, 2-Pcs/Set	Set	1/10
OS-250B	1/4" Blade Set Assembly for OS-series, 2-Pcs/Set	Set	1/10
KAT-FT	4-Pc Replacement Feet Set	Set	1
KAT-BS-OT	4-Pc Replacement Bushings	Set	1
KAT-WR	Dual-End Wrench	Each	1/25

Includes blade replacement wrench



KAT-WR



OS-250B  
Blade set assembly

NSF OS-SERIES

### QUICK-SLICE LETTUCE CUTTER

Cut multiple heads of crisp, fresh lettuce in seconds. The interlocking scalloped, pretensioned blades are sized to cut 1 inch squares of cored lettuce, without bruising or browning the leaves.

- ◆ Aluminum frame with easy-grip handle
- ◆ Stainless steel blade with 49 square cuts
- ◆ Cuts lettuce into 1" x 1" slices in less than 1 minute
- ◆ Rubber feet prevent slipping/scratching on work surface
- ◆ 7" x 7" cutting area



TLC-1



ITEM	DESCRIPTION	UOM	CASE	OVERALL DIMENSIONS L" X D" X H" (mm)	SHIP WEIGHT
TLC-1	1" x 1" Cut	Each	1/2	13 x 18 x 20 (330 x 457 x 508)	17.8lbs (8.1 kgs)

### LETTUCE CUTTER ACCESSORIES

ITEM	DESCRIPTION	UOM	CASE
TLC-1-B	Replacement Blade for TLC-1	Each	1/10
KAT-FT	4-Pc Replacement Feet Set	Set	1
KAT-BS-OT	4-Pc Replacement Bushings	Set	1
KAT-WR	Dual-End Wrench	Each	1/25

Includes blade replacement wrench



TLC-1-B



KAT-WR

NSF TLC-SERIES

## QUICK-SLICE CHOPPERS/DICERS

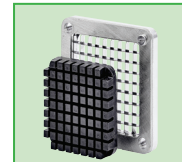
For perfectly diced onions and tomatoes, and cucumbers too, turn to the Kattex Chopper/Dicer.

- ◆ Cast aluminum construction with stainless steel blades
- ◆ Sturdy base with non-skid feet
- ◆ 3-3/8" x 3-3/8" cutting area

ITEM	DESCRIPTION	UOM	CASE	OVERALL DIMENSIONS L" X D" X H" (mm)	SHIP WEIGHT
HCD-250	1/4" Cut	Each	1/4	7-15/16 x 7-15/16 x 18-1/2 (200 x 200 x 470)	7.1 lbs (3.2 kgs)
HCD-375	3/8" Cut	Each	1/4		
HCD-500	1/2" Cut	Each	1/4		

### CHOPPER/DICER ACCESSORIES

ITEM	DESCRIPTION	UOM	CASE
HCD-250BK	1/4" Replacement Blade & Block for HCD-series	Set	1/10
HCD-375BK	3/8" Replacement Blade & Block for HCD-series	Set	1/10
HCD-500BK	1/2" Replacement Blade & Block for HCD-series	Set	1/10
HCD-BR	2-Pc Black Rubber Ring	Set	1/50
KAT-FT	4-Pc Replacement Feet Set	Set	1
KAT-BS-FH	4-Pc Replacement Bushings	Set	1



Replacement blade and block

HCD-250

HCD-SERIES 

## QUICK-SLICE FRUIT WEDGE SLICERS

Get quick and uniform wedges of fruit with a push of the handle. Ideal for coring and sectioning apples, lemons, limes, oranges, and tomatoes.

- ◆ Aluminum construction with sharp stainless steel blades that minimize squeezing and bruising
- ◆ Sturdy base with non-skid feet
- ◆ 3-1/2" diameter cutting area

ITEM	DESCRIPTION	UOM	CASE	OVERALL DIMENSIONS L" X D" X H" (mm)	SHIP WEIGHT
FWS-6	6-Wedge	Each	1/4	7-15/16 x 7-15/16 x 18-1/2 (200 x 200 x 470)	5.7 lbs (2.6 kgs)
FWS-8	8-Wedge	Each	1/4		

### FRUIT WEDGE SLICER ACCESSORIES

ITEM	DESCRIPTION	UOM	CASE
FWS-6BK	6-Section Wedger & Blade Replacement	Set	1/10
FWS-8BK	8-Section Wedger & Blade Replacement	Set	1/10
FWS-6BC	6-Slice Apple Corer Blade	Each	10
FWS-8BC	8-Slice Apple Corer Blade	Each	10
KAT-FT	4-Pc Replacement Feet Set	Set	1
KAT-BS-FH	4-Pc Replacement Bushings	Set	1



FWS-6BC  
Apple corer blade



FWS-6BK  
Replacement wedger and blade for citrus fruits

FWS-8

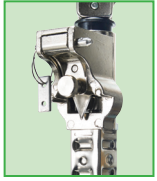
FWS-SERIES 

## PREMIUM MANUAL CAN OPENER

Our premium European-made heavy-duty nickel-plated can opener is fitted with a removable clamp, ideal for on-the-go operations that require flexibility. The rust-resistant stainless steel gear and blade effectively opens various can sizes up to #10.

- ◆ Mount on wooden or stainless steel work tables
- ◆ Easily disassembles for cleaning/sanitizing
- ◆ Heavy-duty stainless steel construction
- ◆ Rigid universal mounting base for screw-down or clamp-on installation with wooden or stainless steel work tables
- ◆ 19" (482mm) long bar accommodates various sizes of cans up to 16" (406mm) tall
- ◆ Quick change dual-sided tempered knife blade and stainless steel gear

Includes base, blade, gear and installation kit



Removable blade



Securely clamps to work surface



Easy operation



ITEM	DESCRIPTION	OVERALL DIMENSIONS L" X D" X H" (mm)	SHIP WEIGHT	UOM	CASE
CO-3N	Stainless Steel Base*, NSF	8-7/16 x 4 x 25-1/2 (214 x 102 x 648)	5.6 lbs (2.5 kg)	Each	1/12

\*Replaces CO-3

## PREMIUM CAN OPENER ACCESSORIES

ITEM	DESCRIPTION	UOM	CASE
CO-3N-B	1-Pc S/S Replacement Blade for CO-3N	Each	1
CO-3G	1-Pc S/S Replacement Gear Set for CO-3N	Each	1



CO-3N-B



CO-3G



CO-3N portable clamp



CO-3N

## STANDARD #1 MANUAL CAN OPENER

The go-to industry standard steel-body can opener, made for high volume kitchens that process up to 50 cans a day. Opens various can sizes up to #10.

- ◆ Includes base, blade, gear and installation kit
- ◆ Rigid universal mounting base for screw-down to wooden or stainless steel work tables
- ◆ 13" (330mm) long bar accommodates any size can up to 10" (254mm) tall
- ◆ Extra-durable dual-sided knife blade and gears are interchangeable with most other can opener brands



CO-1



Securely clamps to work surface



CO-1B



CO-1G



ITEM	DESCRIPTION	UOM	CASE
CO-1	Cast Iron Body	Set	1
CO-1B	2-Pc Replacement Blade Set for CO-1	Set	24/288
CO-1G	1-Pc Replacement Gear Set for CO-1	Each	12/144

Save on time and labor.

Phone: 1-888-946-2682

Fax: 1-973-916-9959

Email: [cs@wincous.com](mailto:cs@wincous.com)

Web: [www.wincous.com](http://www.wincous.com)

**winco**<sup>®</sup>

Foodservice Supplies

Division of The Foodware Group™

[www.thefoodwaregroup.com](http://www.thefoodwaregroup.com)

WIN-KT-NP

KATTEX™ BROCHURE



8 42169 15263 9

Check your Order Status online at [www.wincous.com](http://www.wincous.com)

©Winco®, All Rights Reserved

### NEW JERSEY HEADQUARTERS

65 Industrial Road,  
Lodi, NJ 07644

### FLORIDA SHOWROOM & DISTRIBUTION CENTER

10800 NW 103rd Street,  
Bldg 22, Ste 11, Miami, FL 33178

### NEVADA DISTRIBUTION CENTER

3777 Marion Drive,  
Las Vegas, NV 89115

07/2023