

COUNTERTOP SAFETY SHIELDS

All sizes are available solid or with pass-through window.

- ◆ Provides a clear, sanitary-positive barrier at point of sale
- ◆ Upholds friendly, face-to-face customer interaction
- ◆ Designed to stand on the countertop with sturdy supports
- ◆ Lightweight for ease of mobility
- ◆ Window opening: 12"W x 8"H
- ◆ Thickness: 6 mm

ITEM	DESCRIPTION	UOM	CASE
ACSS-2432	24"W x 32"H	Each	1
ACSS-2432W	24"W x 32"H with Pass-Through Window	Each	1
ACSS-3632	36"W x 32"H	Each	1
ACSS-3632W	36"W x 32"H with Pass-Through Window	Each	1
ACSS-4832	48"W x 32"H	Each	1
ACSS-4832W	48"W x 32"H with Pass-Through Window	Each	1

COUNTERTOP SAFETY SHIELDS



ACSS-2432



ACSS-2432W



ACSS-3632



ACSS-3632W



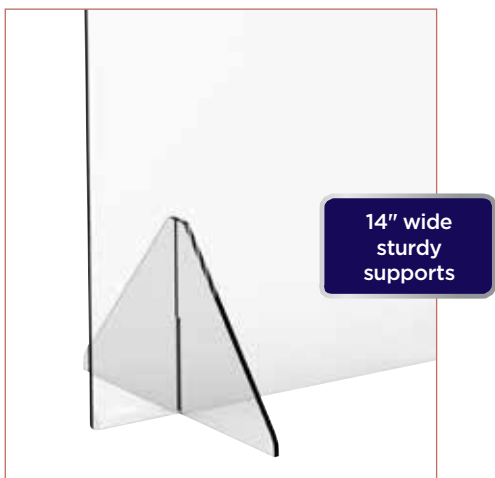
ACSS-4832



ACSS-4832W



ACSS-2432W



14" wide sturdy supports

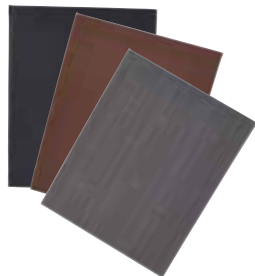


12"W x 8"H pass-through window

MENU COVERS



Full size menu cover styles available in 3 colors



Chic leatherette menu covers provide an elegant yet durable display for full-service or fast casual restaurants alike. The double-sided stitched menu covers offer a refined, customized look without the customization wait times - a timeless style in a full collection to complement any décor.

- ◆ Secure interior picture corners
- ◆ Options for letter and legal size inserts
- ◆ 3 neutral color choices and patterns
- ◆ Common sizes and page configurations



SINGLE-VIEW MENU COVERS

- ◆ LMS-414BK fits 4-1/2" x 14" paper
- ◆ LMS-811 series fits 8-1/2" x 11" letter size paper
- ◆ LMS-814 series fits 8-1/2" x 14" legal size paper

ITEM	DESCRIPTION	COLOR	UOM	CASE
LMS-811BK	Letter Size	Black	Each	50
LMS-811BN	Letter Size	Brown	Each	50
LMS-811GY	Letter Size	Gray	Each	50
LMS-814BK	Legal Size	Black	Each	50
LMS-814GY	Legal Size	Gray	Each	50
LMS-414BK	Bar Size	Black	Each	50

TWO-VIEW MENU COVERS

- ◆ LMD-811 series fits 8-1/2" x 11" letter size paper
- ◆ LMD-814 series fits 8-1/2" x 14" legal size paper



ITEM	DESCRIPTION	COLOR	UOM	CASE
LMD-811BK	Letter Size	Black	Each	30
LMD-811BN	Letter Size	Brown	Each	30
LMD-811GY	Letter Size	Gray	Each	30
LMD-814BK	Legal Size	Black	Each	30
LMD-814BN	Legal Size	Brown	Each	30
LMD-814GY	Legal Size	Gray	Each	30

FOUR-VIEW MENU COVERS

- ◆ LMF-811 series fits 8-1/2" x 11" letter size paper
- ◆ LMF-814 series fits 8-1/2" x 14" legal size paper



ITEM	DESCRIPTION	COLOR	UOM	CASE
LMF-811BK	Letter Size	Black	Each	30
LMF-811BN	Letter Size	Brown	Each	30
LMF-811GY	Letter Size	Gray	Each	30
LMF-814BK	Legal Size	Black	Each	30
LMF-814BN	Legal Size	Brown	Each	30
LMF-814GY	Legal Size	Gray	Each	30

MENU TENTS

- ◆ 5" x 7" paper fits in menu tents



LMTD-57BK



LMTT-57BK

ITEM	DESCRIPTION	UOM	CASE
LMTD-57BK	Dual-View	Each	50
LMTT-57BK	Triple-View	Each	50

The edgings on all Winco® menu covers are double stitched to hold up to the wear and tear of regular, daily handling.

MENU COVERS & STAND

SINGLE POCKET MENU COVERS

- ◆ PMC-5 series fits 5-1/2" x 8" paper
- ◆ PMC-9 series fits 8-1/2" x 11" paper
- ◆ PMC-14 series fits 8-1/2" x 14" paper

ITEM	DESCRIPTION	UOM	CASE
PMC-5K	Black 6-3/8" x 9-3/8"	Each	25/200
PMC-5U	Burgundy 6-3/8" x 9-3/8"	Each	25/200
PMC-9B	Blue 9-3/8" x 12-1/8"	Each	25/200
PMC-9K	Black 9-3/8" x 12-1/8"	Each	25/200
PMC-9R	Red 9-3/8" x 12-1/8"	Each	25/200
PMC-9U	Burgundy 9-3/8" x 12-1/8"	Each	25/200
PMC-9G	Green 9-3/8" x 12-1/8"	Each	25/200
PMC-14K	Black 9-3/8" x 14-7/8"	Each	25/100
PMC-14U	Burgundy 9-3/8" x 14-7/8"	Each	25/100

Clear-view transparent sleeves



PMC-SERIES

BOOK-FOLD DOUBLE PANEL MENU COVERS

- ◆ PMCD-9 series fits 8-1/2" x 11" paper
- ◆ PMCD-14 series fits 8-1/2" x 14" paper

ITEM	DESCRIPTION	UOM	CASE
PMCD-9B	Blue 9-3/8" x 12-1/8"	Each	25/100
PMCD-9K	Black 9-3/8" x 12-1/8"	Each	25/100
PMCD-9R	Red 9-3/8" x 12-1/8"	Each	25/100
PMCD-9U	Burgundy 9-3/8" x 12-1/8"	Each	25/100
PMCD-9G	Green 9-3/8" x 12-1/8"	Each	25/100
PMCD-14K	Black 9-9/16" x 15"	Each	25/100
PMCD-14U	Burgundy 9-9/16" x 15"	Each	25/100



PMCD-9K

TRI-FOLD TRIPLE PANEL MENU COVERS

- ◆ PMCT-9 fits 8-1/2" x 11" paper

ITEM	DESCRIPTION	UOM	CASE
PMCT-9B	Blue 9-1/2" x 12-1/8"	Each	25/50
PMCT-9K	Black 9-1/2" x 12-1/8"	Each	25/50
PMCT-9R	Red 9-1/2" x 12-1/8"	Each	25/50
PMCT-9G	Green 9-1/2" x 12-1/8"	Each	25/50
PMCT-9U	Burgundy 9-1/2" x 12-1/8"	Each	25/50



PMCT-9K

FOUR POCKET BLACK MENU COVER

- ◆ PMCF-9 fits 8-1/2" x 11" paper

ITEM	DESCRIPTION	UOM	CASE
PMCF-9K	9-5/8" x 12-1/8"	Each	25/50



PMCF-9K

DOUBLE-SIDED CLEAR ACRYLIC MENU STANDS

- ◆ 2.0mm thickness

ITEM	DESCRIPTION	UOM	CASE
ATCH-46	4" x 6"	Each	12/36
ATCH-53	5-1/2" x 3-1/2"	Each	12/48
ATCH-57	5" x 7"	Each	12/36
ATCH-811	8" x 11"	Each	12/24



ATCH-811

TABLE SIGN HOLDERS/CLIPS

MENU/SIGN CLIPS

ITEM	DESCRIPTION	UOM	CASE
MH-1	Harp Clip, Heavy-Cast Base, 1"L x 1"W x 1-1/2"H	Doz	10/60
MH-2	Ring-Type, 2-1/2" x 2-1/3"	Doz	2/20
MH-2C	Clip, 2-1/2" x 2-1/2"	Doz	1/40



MH-1



MH-2



MH-2C



Card not included

TABLE NUMBER HOLDERS

◆ Mirror-finish chrome-plated steel

ITEM	DESCRIPTION	UOM	CASE
TBH-8	8"	Each	12/120
TBH-12	12"	Each	12/120
TBH-15	15"	Each	12/120
TBH-18	18"	Each	12/120



TBH-8



TBH-8 & TBN-25



TBH-12



TBH-12 & TBN-25



PLASTIC TABLE NUMBERS

- ◆ Numbers are printed on both sides
- ◆ Each number card measures 4" x 3-3/4"



TBN-SERIES

ITEM	DESCRIPTION	UOM	CASE
TBN-25	Numbers 1-25	Set	1/200
TBN-50	Numbers 1-50	Set	1/100
TBN-100	Numbers 1-100	Set	1/50

WINE SERVICE

4 QT STAINLESS STEEL WINE BUCKETS & STAND

- ◆ Long-lasting stainless steel, ideal for inside or outdoor tableside service
- ◆ Elegant mirror-finish for stylish display
- ◆ Easily transport wine buckets by the smooth knob or ring handles
- ◆ Simple 3-piece assembly for the wine bucket stand

ITEM	DESCRIPTION	SIZE	UOM	CASE
WB-4	4 Qt Wine Bucket, (No Retail Pkg)	7-1/2" Dia x 8" H	Each	6/24
WB-4HV	4 Qt Deluxe Wine Bucket	8" Dia x 10" H	Each	1/12
WB-29S	Pipe Style Stand* for WB-4 & WB-4HV	28-1/2" H	Each	1/6

*Assembly required



WB-4

WB-4HV

WB-29S

8 QT STAINLESS STEEL WINE BUCKET & STANDS

- ◆ Elegant mirror-finish for stylish display

ITEM	DESCRIPTION	UOM	CASE
WB-8	8 Qt Wine Bucket	Each	6/24
WB-8S	Stand* for WB-8	Each	1/12
WB-12FS	Folding Stand for WB-8	Each	1/6

*Assembly required



WB-12FS
Folded

WB-8S

WB-8



STAINLESS STEEL DOUBLE WALL WINE COASTERS

- ◆ Smooth or hammered satin-finish
- ◆ Fits 3-3/4" diameter wine bottles

ITEM	DESCRIPTION	SIZE	UOM	CASE
DWCC-5	Smooth Finish	4-5/8" Dia x 2-5/8" H	Each	12
DWCC-5H	Hammered Finish	4-5/8" Dia x 2-5/8" H	Each	12



DWCC-5H

DWCC-5

WINE COOLERS



ITEM	DESCRIPTION	SIZE	UOM	CASE
WC-60	Double Wall Hourglass, Mirror S/S	6" Dia x 7" H	Each	1/12
WC-7M	Marble, White	4 1/2" Dia x 7" H	Each	1/6
WC-5	Double Wall, Satin S/S (No Retail Pkg)	4 1/2" Dia x 7-3/4" H	Each	6/24
WC-4A	Acrylic, Clear	4 1/2" Dia x 9 1/4" H	Each	1/12



WC-60



WC-4A



WC-5



WC-7M



PLATE COVERS



PPCR-8



PPCR-10



PPCR-12



Secure stackability for transport

NSF PPCR-SERIES

POLYCARBONATE PLATE COVERS

Whether serving indoors or out, we've got you covered.

- ◆ Keep food hot and safe while serving
- ◆ Lids securely stack to hold up during transport
- ◆ Withstands temperatures up to 210°F (99°C)
- ◆ Clear cover for ease of viewing food
- ◆ Covers plates from 8" up to 12" in diameter
- ◆ Chip & break-resistant polycarbonate material
- ◆ Dishwasher safe

ITEM	DESCRIPTION	UOM	CASE
PPCR-8	8" Dia	Each	36
PPCR-9	9" Dia	Each	36
PPCR-10	10" Dia	Each	36
PPCR-11	11" Dia	Each	36
PPCR-12	12" Dia	Each	36



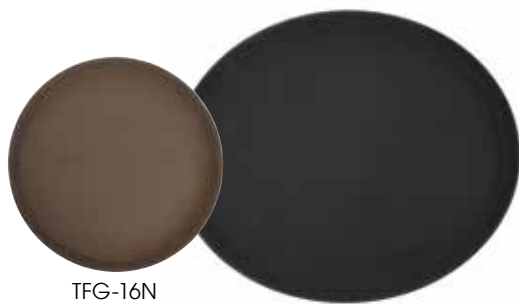
Upscale look and break-resistant, perfect for high-volume use

NON-SLIP SERVING TRAYS



DELUXE FIBERGLASS NON-SLIP TRAYS

- ◆ High durability fiberglass tray with self-molded, peel-resistant, non-slip surface
- ◆ Dishwasher safe



TFG-16N

TFG-2622K

NSF TFG FIBERGLASS SERIES

ITEM	DESCRIPTION	SIZE	COLOR	UOM	CASE
TFG-11K	Round	11"	Black	Each	1/12
TFG-11N	Round	11"	Brown	Each	1/12
TFG-14K	Round	14"	Black	Each	1/12
TFG-14N	Round	14"	Brown	Each	1/12
TFG-16K	Round	16"	Black	Each	1/12
TFG-16N	Round	16"	Brown	Each	1/12
TFG-2622K	Oval	26"x 22"	Black	Each	1/6
TFG-2622N	Oval	26"x 22"	Brown	Each	1/6

EASY-HOLD RUBBER-LINED PLASTIC TRAYS

- ◆ Non-slip surface
- ◆ Hand wash only



TRH-16

TRH-2722K

NSF TRH PLASTIC SERIES

ITEM	DESCRIPTION	SIZE	COLOR	UOM	CASE
TRH-11	Round	11"	Brown	Each	12
TRH-11K	Round	11"	Black	Each	12
TRH-14	Round	14"	Brown	Each	12
TRH-14K	Round	14"	Black	Each	12
TRH-16	Round	16"	Brown	Each	12
TRH-16K	Round	16"	Black	Each	12
TRH-1418	Rectangular	18" x 14"	Brown	Each	12
TRH-1418K	Rectangular	18" x 14"	Black	Each	12
TRH-2722	Oval	27" x 22"	Brown	Each	1/6
TRH-2722K	Oval	27" x 22"	Black	Each	1/6

CORK-LINED PLASTIC TRAYS

- ◆ Hand wash only



TCK-16



ITEM	DESCRIPTION	SIZE	UOM	CASE
TCK-14	Round	14"	Each	12/48
TCK-16	Round	16"	Each	12/36
TCK-16CK	Replacement Cork for TCK-16		Each	50/350

STAINLESS STEEL SERVING TRAYS

ITEM	DESCRIPTION	SIZE	UOM	CASE
STRS-12	Round	12"	Each	12/48
STRS-14	Round	14"	Each	12/24
STRS-16	Round	16"	Each	12/24

STAINLESS STEEL OVAL PLATTERS

ITEM	DESCRIPTION	SIZE	UOM	CASE
OPL-12	Oval	12" x 8-5/8"	Each	10/60
OPL-14	Oval	14" x 8-3/4"	Each	10/60
OPL-16	Oval	16" x 10-1/4"	Each	10/40
OPL-18	Oval	18" x 11-1/2"	Each	10/30
OPL-20	Oval	20" x 13-3/4"	Each	10/20
OPL-22	Oval	21-3/4" x 14-1/2"	Each	12

STAINLESS STEEL TRAYS & PLATTERS



STRS-14

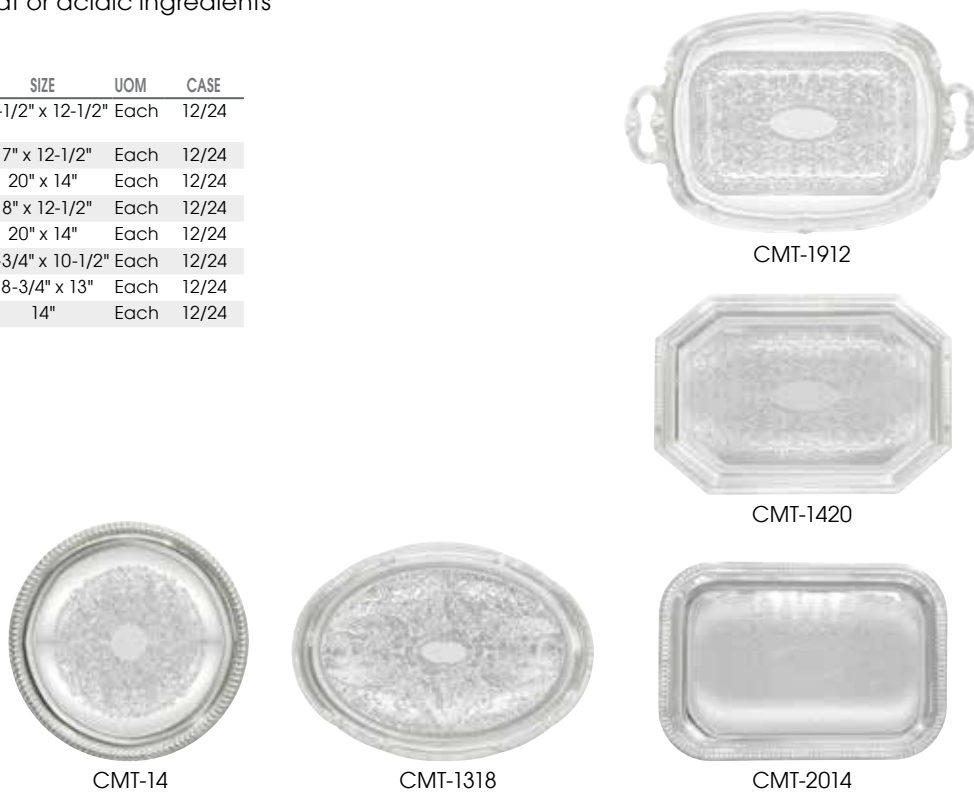
OPL-14

CHROME-PLATED SERVING TRAYS

- ◆ Limit use with meat or acidic ingredients
- ◆ Hand wash only

ITEM	DESCRIPTION	SIZE	UOM	CASE
CMT-1912	Rectangular w/Handles	19-1/2" x 12-1/2"	Each	12/24
CMT-1217	Octagonal	17" x 12-1/2"	Each	12/24
CMT-1420	Octagonal	20" x 14"	Each	12/24
CMT-1812	Rectangular	18" x 12-1/2"	Each	12/24
CMT-2014	Rectangular	20" x 14"	Each	12/24
CMT-1014	Oval	14-3/4" x 10-1/2"	Each	12/24
CMT-1318	Oval	18-3/4" x 13"	Each	12/24
CMT-14	Round	14"	Each	12/24

CHROME SERVING TRAYS



CMT-1912

CMT-1420

CMT-14

CMT-1318

CMT-2014

TRAY STANDS

ITEM	DESCRIPTION	SIZE	UOM	CASE
TSY-1A	Chrome Steel	31"	Each	6
TR-33W	Rubberwood, Walnut	32"	Each	1
TR-34W	Rubberwood, Mahogany	32"	Each	1

TRAY STANDS



TR-34W

TR-33W

TSY-1A

DINING & SERVING TRAYS



Reinforced bottom

3 POPULAR SIZES

7 COLORS PER SIZE



FFT-SERIES

HIGH-QUALITY PLASTIC CAFETERIA TRAYS

◆ Resists warping with frequent use

ITEM	DESCRIPTION	COLOR	UOM	CASE
FFT-1014B	10" x 14"	Brown	Each	12/48
FFT-1014E	10" x 14"	Grey	Each	12/48
FFT-1014G	10" x 14"	Green	Each	12/48
FFT-1014K	10" x 14"	Black	Each	12/48
FFT-1014O	10" x 14"	Orange	Each	12/48
FFT-1014R	10" x 14"	Red	Each	12/48
FFT-1014U	10" x 14"	Burgundy	Each	12/48
FFT-1216B	12" x 16"	Brown	Each	12/48
FFT-1216E	12" x 16"	Grey	Each	12/48
FFT-1216G	12" x 16"	Green	Each	12/48
FFT-1216K	12" x 16"	Black	Each	12/48
FFT-1216O	12" x 16"	Orange	Each	12/48
FFT-1216R	12" x 16"	Red	Each	12/48
FFT-1216U	12" x 16"	Burgundy	Each	12/48
FFT-1418B	14" x 18"	Brown	Each	12/48
FFT-1418E	14" x 18"	Grey	Each	12/48
FFT-1418G	14" x 18"	Green	Each	12/48
FFT-1418K	14" x 18"	Black	Each	12/48
FFT-1418O	14" x 18"	Orange	Each	12/48
FFT-1418R	14" x 18"	Red	Each	12/48
FFT-1418U	14" x 18"	Burgundy	Each	12/48



ACVP-0608

ALUMINUM SERVING TRAY - OPEN BEAD

◆ Wide corners and open rim for easy cleaning

ITEM	DESCRIPTION	GAUGE	UOM	CASE
ACVP-0608	6" x 8"	14	Each	24



ALUMINUM SERVING TRAYS - CLOSED BEAD

- ◆ Reinforced galvanized wire rim
- ◆ Made of 3003 aluminum

ITEM	DESCRIPTION	GAUGE	UOM	CASE
ALXP-1013	9-1/2" x 13"	1/4-Size	20	Each 24
ALXP-1318	13" x 18"	1/2-Size	20	Each 12



ALXP-1013

STAINLESS STEEL 6 COMPARTMENT MESS TRAYS

◆ Mirror finish; Dishwasher safe

ITEM	DESCRIPTION	UOM	CASE
SMT-1	15-1/2" x 11-1/2"	Each	24
SMT-2	15-1/2" x 11-1/2"	Each	24



SMT-1



SMT-2

POLY-PLASTIC FLAT BOTTOM PLATTERS

- ◆ Microwave and heat lamp safe up to 150°F (65°C)
- ◆ Dishwasher safe

ITEM	DESCRIPTION	COLOR	UOM	CASE
PLB-G	10-3/4" x 7-1/4" x 1-1/2"	Green	Doz	12
PLB-K	10-3/4" x 7-1/4" x 1-1/2"	Black	Doz	12
PLB-R	10-3/4" x 7-1/4" x 1-1/2"	Red	Doz	12
PLB-Y	10-3/4" x 7-1/4" x 1-1/2"	Yellow	Doz	12

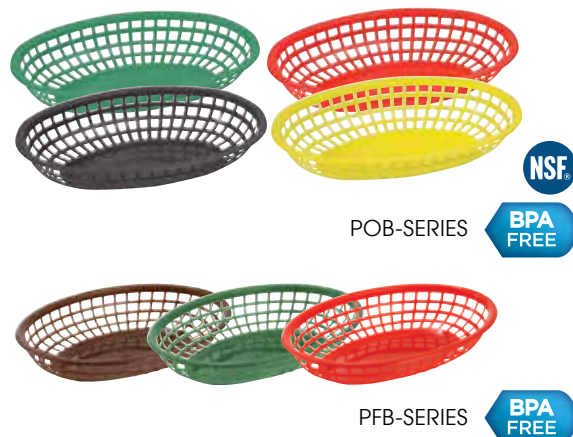
SERVING BASKETS



POLY-PLASTIC OVAL BASKETS

- ◆ Microwave and heat lamp safe up to 150°F (65°C)
- ◆ Dishwasher safe

ITEM	DESCRIPTION	COLOR	UOM	CASE
POB-G	10-1/4" x 6-3/4" x 2"	Green	Doz	12
POB-K	10-1/4" x 6-3/4" x 2"	Black	Doz	12
POB-R	10-1/4" x 6-3/4" x 2"	Red	Doz	12
POB-Y	10-1/4" x 6-3/4" x 2"	Yellow	Doz	12
PFB-10B	9-1/2" x 5" x 2"	Brown	Doz	3
PFB-10G	9-1/2" x 5" x 2"	Green	Doz	3
PFB-10R	9-1/2" x 5" x 2"	Red	Doz	3



DECORATIVE BAMBOO FOOD PICKS

- ◆ Versatile solution to hold together sandwiches/wraps or garnish beverages with style
- ◆ Knotted end allows easy pick-up of individual portions
- ◆ Eco-friendly

ITEM	DESCRIPTION	SIZE	PCS/BAG	UOM	CASE
PK-KT3	Bamboo	3"	100	Pack	12/120
PK-KT4	Bamboo	4"	100	Pack	12/120
PK-KT7	Bamboo	7"	100	Pack	12/120



DECORATIVE PICKS



100pcs per pack, per size



DECORATIVE WOOD & PLASTIC FOOD PICKS

- ◆ Hanging retail packaging

ITEM	DESCRIPTION	SIZE	PCS/BAG	UOM	CASE
PK-P4	Parasol	3-15/16"	144	Bag	100
PK-C2	Cellophane Frills	2-9/16"	1,000	Bag	10
PK-C4	Cellophane Frills	3-15/16"	1,000	Bag	10
PK-A35	Plastic Arrow	3-7/16"	500	Bag	20
PK-S3	Plastic Sword	2-3/4"	500	Bag	20



BAGEL SLICER



5"L x 2-1/4"W slot

NSF BGS-1

POLYCARBONATE BAGEL SLICER

- ◆ High-carbon, non-stick blade with serrated edge provides precise cuts with every slice
- ◆ Clear guard allows visibility & protects hands/fingers from injury
- ◆ Wide base helps maintain stability while in use

ITEM	DESCRIPTION	UOM	CASE
BGS-1	7"L x 3-1/2"W x 9"H	Set	1/12
BGS-1B	Replacement Blade with Guard	Each	1/12

CONDIMENT DISPENSER



PKTS-2D

BPA FREE PKTS-SERIES

CONDIMENT DISPENSER

- ◆ Removable plastic fountain jars for easy cleaning/refilling
- ◆ Durable 18/8 stainless steel, heavy duty pump
- ◆ Two (2) 3-1/2 Qt plastic fountain jars included (7 Qt total)
- ◆ Each pump dispenses between 1 oz and 1-1/4 oz portions, depending on thickness of condiments
- ◆ 11"L x 8-3/4"W x 16"H (with pump)

ITEM	DESCRIPTION	UOM	CASE
PKTS-2D	Condiment Dispenser with 2 Standard Pumps	Set	1
PKTS-PT01	Individual Pump with Lid	Each	20
PKTS-PT02	Replacement Plastic Fountain Jar	Each	6
PKTS-PT03	Stainless Steel Casing	Each	1

SQUEEZE BOTTLES



PSW-CAP

Fits both PSW- and PSB-Series lids



PSW-24

BPA FREE PSW-SERIES

WIDE-MOUTH SQUEEZE BOTTLES

- ◆ Open tip ready to use - no need for cutting
- ◆ Wide mouth for easier refilling and cleaning
- ◆ Leak-free design

ITEM	DESCRIPTION	COLOR	UOM	CASE
PSW-12	12 Oz	Clear	Pack	1/12
PSW-12R	12 Oz	Red	Pack	1/12
PSW-12Y	12 Oz	Yellow	Pack	1/12
PSW-16	16 Oz	Clear	Pack	1/8
PSW-16R	16 Oz	Red	Pack	1/8
PSW-16Y	16 Oz	Yellow	Pack	1/8
PSW-24	24 Oz	Clear	Pack	1/8
PSW-24R	24 Oz	Red	Pack	1/8
PSW-24Y	24 Oz	Yellow	Pack	1/8
PSW-32	32 Oz	Clear	Pack	1/6
PSW-32R	32 Oz	Red	Pack	1/6
PSW-32Y	32 Oz	Yellow	Pack	1/6
PSW-C-LID	Replacement Lid	Clear	Doz	60
PSW-Y-LID	Replacement Lid	Yellow	Doz	60
PSW-CAP	Cap, 48-pcs/pk	Red	Pack	480



6 bottles per pack



BPA FREE PSB-SERIES

SQUEEZE BOTTLES

- ◆ Open tip ready to use - no need for cutting

ITEM	DESCRIPTION	COLOR	UOM	CASE
PSB-08C	8 Oz	Clear	Pack	1/12
PSB-08R	8 Oz	Red	Pack	1/12
PSB-08Y	8 Oz	Yellow	Pack	1/12
PSB-12C	12 Oz	Clear	Pack	1/12
PSB-12R	12 Oz	Red	Pack	1/12
PSB-12Y	12 Oz	Yellow	Pack	1/12
PSB-24C	24 Oz	Clear	Pack	1/6
PSB-24R	24 Oz	Red	Pack	1/6
PSB-24Y	24 Oz	Yellow	Pack	1/6
PSB-C-LID	Replacement Lid	Clear	Doz	60
PSW-CAP	Cap, 48-pcs/pk	Red	Pack	480

PLASTIC ROTARY CHEESE GRATER

- ◆ Ideal for grating hard cheese or chocolate
- ◆ Includes 2 interchangeable drums for fine or coarse grating
- ◆ Dishwasher safe

ITEM	DESCRIPTION	UOM	CASE
PRTS-2	7"L x 3-1/2"W x 4"H	Each	6/24

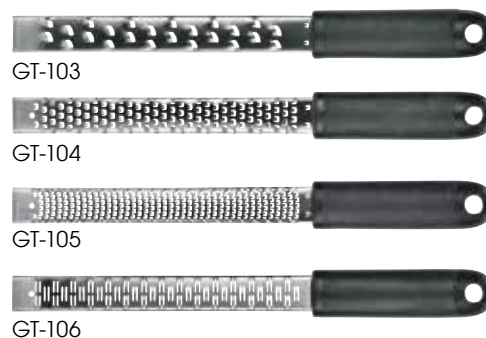
TABLESIDE SERVICE



ZESTER GRATERS

- ◆ 18/8 stainless steel blade
- ◆ Comes with cover for the blade
- ◆ Comfortable soft-grip handle
- ◆ Superior anti-corrosion properties and durability

ITEM	DESCRIPTION	UOM	CASE
GT-103	Medium Coarse Blade	Each	12/72
GT-104	Zester Blade	Each	12/72
GT-105	Fine Blade	Each	12/72
GT-106	Ribbon Blade	Each	12/72



CHEESE KNIFE SETS

- ◆ Each set includes 6 knives for hard, soft, firm or crumbly cheeses
- ◆ Stainless steel blades

ITEM	DESCRIPTION	UOM	CASE
KCS-6	6-Pc Set w/POM Hdls	Set	1/24
KCS-6W	6-Pc Set w/Wooden Hdls	Set	6/48



WOOD BREAD/CHEESE BOARDS

- ◆ Built-in knife slot

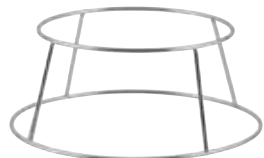
ITEM	DESCRIPTION	UOM	CASE
WCB-125	12" x 5" x 3/4"	Each	24
WCB-225	22-1/2"L x 5-1/2"W x 3/4"H	Each	12



SEAFOOD SERVICE



ASFT-12



SFR-4

ALUMINUM SEAFOOD TRAYS

◆ The brushed aluminum construction retains cold and keeps foods at safe serving temperatures.

ITEM	DESCRIPTION	UOM	CASE
ASFT-12	12"Dia x 1-1/2"H	Each	12/36
ASFT-14	13-3/4"Dia x 1-1/2"H	Each	12/36
ASFT-16	15-3/4"Dia x 1-1/2"H	Each	12/24
ASFT-18	17-3/4"Dia x 1-1/2"H	Each	12/24
ASFT-20	19-3/4"Dia x 1-1/2"H	Each	12



CHROME-PLATED SEAFOOD TRAY DISPLAY RACKS

◆ Use with ASFT-series seafood trays to create appealing tabletop presentations

ITEM	DESCRIPTION	UOM	CASE
SFR-4	7-3/8" Top Dia / 9-5/8" Bottom Dia x 4-3/8"H	Each	20
SFR-7	7-3/8" Top Dia / 9-5/8" Bottom Dia x 7"H	Each	20



LC-85



LC-01



LC-03



LC-04



LC-05

LOBSTER CRACKERS

ITEM	DESCRIPTION	SIZE	UOM	CASE
LC-01	Stainless Steel	6"	Each	12/72
LC-03	Chrome Plated, Large	6"	Each	12/144
LC-04	Nut/Lobster Cracker	4-3/4"	Each	24/144
LC-05	Zinc Alloy	6"	Each	12/72
LC-85	Zinc Alloy, Carded	6"	Each	12/72



18/8 STAINLESS STEEL SEAFOOD PICKS

◆ Decorative lobster stamp
◆ Narrow two-tine fork designed to effortlessly extract more shellfish meat

ITEM	DESCRIPTION	UOM	CASE
LC-08	8"L x 3/4"W, 4-Pcs/Pk	Pack	30/120



LC-08

4pcs per pack



Decorative stamp



SBW-35

BUTTER WARMER

◆ Set includes wire stand, stainless steel butter pan, glass votive holder and candle

ITEM	DESCRIPTION	UOM	CASE
SBW-35	4-Pc Set	Set	1/48



SND-6



SND-T6



SND-F7

STAINLESS STEEL SNAIL SERVICE

◆ Neatly serve escargot

ITEM	DESCRIPTION	UOM	CASE
SND-6	Dish, 6 Wells	Each	12/144
SND-T6	Tongs	Each	12/120
SND-F7	Fork	Doz	1/50

TABLE CRUMBERS



ATC-16G



ATC-16S

ALUMINUM TABLE CRUMBERS

◆ 6" long, featuring a pocket clip

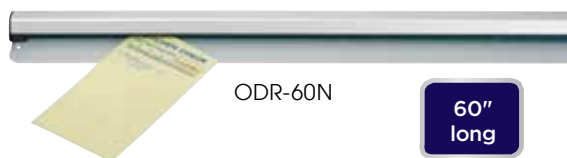
ITEM	DESCRIPTION	UOM	CASE
ATC-16G	Gold	Each	120/600
ATC-16S	Silver	Each	120/600

ALUMINUM ORDER RACKS

- ◆ Occupies less space, easily fits onto narrow counter edges
- ◆ Packaged in retail hanging pack

ITEM	DESCRIPTION	UOM	CASE
ODR-18N	18"	Each	12/24
ODR-24N	24"	Each	12/24
ODR-36N	36"	Each	12/24
ODR-48N	48"	Each	12/24
ODR-60N	60"	Each	1/12

ORDER RACKS & CALL BELLS



CALL BELLS

- ◆ Chrome plated with plastic base

ITEM	DESCRIPTION	UOM	CASE
CBEL-1	3-1/2"Dia	Each	12/144
CBEL-2	4"Dia	Each	12/72



STAINLESS STEEL TABLE SIGNS

Compact size, ideal for tabletops.

- ◆ Highly visible bold lettering

ITEM	DESCRIPTION	UOM	CASE
RVS-4	4-3/4" x 1-3/4"	Each	12/120
SGN-106	3"L x 1-1/2"D x 1-1/4"H	Each	12/120

TABLE SIGNS



BLACK CHECK PRESENTERS

- ◆ Convenient carry size or easily slip into apron pocket
- ◆ Credit card slot; slanted pockets for receipt/order pad/tips
- ◆ Center clear sleeve for displaying daily specials, drinks or deserts (CHK-3K)

ITEM	DESCRIPTION	UOM	CASE
CHK-1K	5-1/2" x 10"	Each	12/96
CHK-2K	5-1/4" x 8-1/2" w/Elastic Pen Loop	Each	12/96
CHK-3K	4-1/2" x 9", Flexible Spine	Each	24/96

CHECK SERVICE

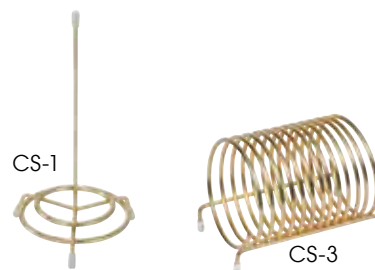


CHECK CADDY

ITEM	DESCRIPTION	UOM	CASE
CS-3	3"Dia, Brass-Plated	Each	12/36

CHECK SPINDLE

ITEM	DESCRIPTION	UOM	CASE
CS-1	6" H, Steel Wire	Each	12/240



TIP TRAY

ITEM	DESCRIPTION	UOM	CASE
TT-46	4-1/2" x 6-1/2"	Doz	1/12

COUNTERFEIT DETECTION PEN

- ◆ Fast and easy way to detect fraudulent bills
- ◆ Can be used with other counterfeit detection methods
- ◆ 2 pieces per pack

ITEM	DESCRIPTION	UOM	CASE
PPM-2	2-Pcs/Pk	Pack	18/72



AUTOMATIC HAND-SANITIZER DISPENSER



7-1/4"H

SDT-8S

AUTOMATIC HAND-SANITIZER TABLE/COUNTERTOP DISPENSER

- ◆ Hands-free dispensing reduces cross-contamination
- ◆ Compact, durable construction
- ◆ Holds up to 8 ounces of hand-sanitizer

ITEM	DESCRIPTION	UOM	CASE
SDT-8S	Brushed Nickel	Each	24



4-level adjustable dispensing volume



Easy to operate and refill



4 AAA batteries required (not included)

CONDIMENT PACKET HOLDER



*Pans sold separately

NSF SCPH-33

18/8 STAINLESS STEEL CONDIMENT PACKET HOLDER

- ◆ Fits various configurations 1/3, 1/6 and 1/9-size steam table pans*
- ◆ Ideal for keeping sugar, salt or sauce packets organized
- ◆ Two openings, each measures 12"L x 6-1/8"W
- ◆ Sloped angle allows easy access on crowded countertops

ITEM	DESCRIPTION	UOM	CASE
SCPH-33	16"L x 13-1/2"W x 9-1/4"H	Each	1/2

Refer to Steam Table Pans for complete food pan range

TABLETOP DISPENSERS



BPA FREE ACSD-712



BPA FREE ACTD-3

ACRYLIC STRAW DISPENSER

- ◆ Easily turn the roller to dispense a straw
- ◆ Holds up to 250, 10" long straws

ITEM	DESCRIPTION	UOM	CASE
ACSD-712	10-3/4" x 4-3/4" x 7"	Each	6

ACRYLIC TOOTHPICK DISPENSER

- ◆ Turn the roller to dispense a toothpick

ITEM	DESCRIPTION	UOM	CASE
ACTD-3	3" x 2-1/2" x 4"	Each	6/36

STAINLESS STEEL NAPKIN DISPENSERS

ITEM	DESCRIPTION	UOM	CASE
NH-5	3-1/2"W x 5"H	Each	1/36
NH-7	3-1/2"W x 7"H	Each	1/36



NH-5



NH-7



BPA FREE SDP-3

SAN PLASTIC VERTICAL STRAW DISPENSER

- ◆ Clear, break-resistant SAN plastic cylinder
- ◆ Stainless steel pull-up lid and dispenser insert
- ◆ Holds up to 100, 10" long straws

ITEM	DESCRIPTION	UOM	CASE
SDP-3	3-3/8"Dia x 10-3/4"H	Each	1/12

STAINLESS STEEL MINI SWING-LID WASTE CAN

- ◆ 4-3/4" diameter x 6" tall
- ◆ Compact size ideal for use on table or countertop

ITEM	DESCRIPTION	UOM	CASE
DDSF-101S	S/S Mini Waste Can	Each	12/48

MINI WASTE CAN



DDSF-101S

STAINLESS STEEL ASHTRAY

- ◆ 4" diameter
- ◆ Stackable

ITEM	DESCRIPTION	UOM	CASE
SAS-4	S/S Ashtray	Each	24/96

ASHTRAYS



SAS-4

PLASTIC MELAMINE ASHTRAYS

- ◆ 4" diameter with slots for 6 cigarettes and 1 cigar
- ◆ Stackable; 1-1/2" deep well
- ◆ Heat resistant up to 380°F (193°C)

ITEM	DESCRIPTION	COLOR	UOM	CASE
MAS-4K	Melamine Ashtray	Black	Doz	12
MAS-4R	Melamine Ashtray	Red	Doz	12



MAS-4R



MAS-4K

RECHARGEABLE TEALIGHTS


- ◆ A complete charge provides 12 hours of simulated flickering candle light
- ◆ 12 tealights, each with ON/OFF switch on the bottom
- ◆ Includes charging base, 120V adapter and NiMH battery
- ◆ Tealights: 1-5/8" diameter x 2" high
- ◆ Cylinders: 1-3/4" diameter x 4" high

ITEM	DESCRIPTION	UOM	CASE
CLR-12S	Rechargeable Tealights	Set	1/12

TEALIGHTS



CL-L

CLR-12S 

BATTERY-OPERATED TEALIGHT

- ◆ One CR2032 battery included
- ◆ 60 hours of battery life

ITEM	DESCRIPTION	UOM	CASE
CL-L	1-1/2"Dia x 1-1/2"H	Each	12/240

STABLEIZER TABLE WEDGES/SHIMS

Put an end to wobble tables! Quickly sTABLEize customers' common complaint of wobbly tables with these economical and practical plastic wedges.

- ◆ Stop the rocking with a single shim or stack to stabilize
- ◆ Align adjacent tables when seating larger parties
- ◆ Each wedge measures 2"L x 1-1/4"W x up to 1/4"H
- ◆ 75 pieces per pack

ITEM	DESCRIPTION	COLOR	UOM	CASE
TW-75B	Flexible	Black	Pack	48
TW-75W	Rigid	Translucent	Pack	48

TABLE WEDGES/SHIMS




TW-75B





TW-75W



Stackable for customized leveling

 **Protect** your guests' experience

 **Alleviate** staff aggravation

 **Save** on expense of replacing tables and losing customers to dreaded wobbly tables



75 pieces per container

WAIT SERVICE APRONS

SIGNATURE CHEF



BADN-3126

Individually packaged in printed poly-bag



Color box with full case purchase



BADN-3430



HEAVYWEIGHT DENIM BIB APRON, CROSS-BACK

Stylish and functional, the dark wash denim masks spills and stains while keeping up appearances.

- ◆ 80/20 cotton-poly blend dark wash denim
- ◆ Contrast stitching and brass rivet details
- ◆ Cross-back straps adjust for best fit
- ◆ Two (2) slanted waist pockets
- ◆ Thermometer/pen pocket
- ◆ 31-3/4"L x 26-3/4"W
- ◆ Color display box only available with full case (FC) qty

ITEM	COLOR	UOM	CASE
BADN-3126	Dark Wash w/Brown Straps	Each	12/24



Cross-back



Leather strap divider



HEAVYWEIGHT DENIM BIB APRON, ADJUSTABLE NECK

Hard-wearing style that can handle the hustle. Adjust the neck strap to achieve the perfect length.

- ◆ 80/20 cotton-poly blend dark wash denim
- ◆ Adjustable neck accommodates most heights
- ◆ Two (2) vertical waist pockets
- ◆ Open chest pocket
- ◆ Zippered cell-phone pocket
- ◆ 34-1/2"L x 30-1/4"W
- ◆ Color display box only available with full case (FC) qty

ITEM	COLOR	UOM	CASE
BADN-3430	Dark Wash w/Gray Straps	Each	12/24



Adjustable neck strap

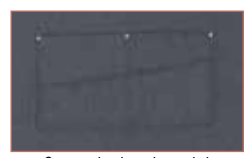
MID-WEIGHT BIB APRONS

The perfect addition to uniforms calling for a streamlined look.

- ◆ Blue apron is 65/35 poly-cotton blend
- ◆ Black apron is 80/20 poly-cotton blend
- ◆ Adjustable snap-button neck strap for the best fit
- ◆ Thermometer/pen pocket
- ◆ Eight (8) varying size waist pockets to hold supplies
- ◆ 33-1/2"L x 27"W

◆ Color display box only available with full case (FC) qty

ITEM	COLOR	UOM	CASE
BA-3327B	Blue	Each	24/48
BA-3327K	Black	Each	24/48



INDIVIDUALLY PACKAGED IN PRINTED POLY-BAG

WOVEN CHALKSTRIPE BIB APRON

The stripe pattern of this bib apron is woven in, making for a lasting appearance that stands up to busy service and bartending shifts.

- ◆ 65/35 poly-cotton blend
- ◆ Two (2) waist pockets; designed to hold digital tablets up to 8" wide
- ◆ 33-1/2"L x 27"W

ITEM	DESCRIPTION	UOM	CASE
BA-3427CS	Chalkstripe w/Pockets	Each	12/60



INDIVIDUALLY PACKAGED IN PRINTED POLY-BAG

3-POCKET MID-LENGTH BIB APRONS

- ◆ 65/35 poly-cotton blend
- ◆ Adjustable neck strap
- ◆ 24"L x 27-1/2"W

ITEM	COLOR	UOM	CASE
BA-2724W	White	Each	12/60
BA-2724K	Black	Each	12/60



WAIT SERVICE APRONS

SIGNATURE CHEF



BA-PBL
Model: 6'



BA-SERIES, WITHOUT POCKETS



Available Colors

BA-SERIES, WITH PEN & PAD POCKETS



FULL-LENGTH BIB APRONS

- ◆ Pen and pad pockets on select items
- ◆ Cotton-poly blend, machine wash and dry; wrinkle-resistant
- ◆ Assorted colors available
- ◆ 33"L x 26"W

ITEM	DESCRIPTION	UOM	CASE
BA-3226WH	White, No Pockets	Each	12/60
BA-3226BK	Black, No Pockets	Each	12/60
BA-PBG	Burgundy, w/Pockets	Each	12/60
BA-PBK	Black, w/Pockets	Each	12/60
BA-PBL	Blue, w/Pockets	Each	12/60
BA-PGN	Green, w/Pockets	Each	12/60
BA-PLG	Light Green, w/Pockets	Each	12/60
BA-PRD	Red, w/Pockets	Each	12/60
BA-PWH	White, w/Pockets	Each	12/60

INDIVIDUALLY
PACKAGED IN
PRINTED POLY-BAG



WA-3129WH

WA-3129BK



BISTRO FULL LENGTH APRONS

These full length bistro/waist aprons are a versatile addition to staff uniforms, easily transitioning from casual to formal, all with a polished look.

- ◆ 65/35 poly-cotton blend
- ◆ 2 large utility pockets; fits most digital tablets

ITEM	DESCRIPTION	UOM	CASE
WA-3129WH	White	Each	12/60
WA-3129BK	Black	Each	12/60

INDIVIDUALLY
PACKAGED IN
PRINTED POLY-BAG



WA-2819W

WA-2819K



BISTRO HALF LENGTH APRONS

Simple and crisp, the half length bistro aprons are adaptable across a multitude of settings.

- ◆ 65/35 poly-cotton blend
- ◆ 2 utility pockets; fits most digital tablets
- ◆ 19"L x 28"W

ITEM	DESCRIPTION	UOM	CASE
WA-2819W	White	Each	12/60
WA-2819K	Black	Each	12/60

FOUR-WAY APRONS

These aprons offer four surfaces for a quick-flip change to present a clean side on the fly, without the need for switching to a new apron.

- ◆ 65/35 poly-cotton blend
- ◆ 17"L x 34"W

ITEM	DESCRIPTION	UOM	CASE
WA4-3417W	White	Each	12/60
WA4-3417K	Black	Each	12/60



Models (L to R): 6' / 5' 3" / 5' 7"

WAIT SERVICE APRONS



SIGNATURE CHEF

4 aprons
in one



WA4-3417W



WA4-3417K

INDIVIDUALLY
PACKAGED IN
PRINTED POLY-BAG

3-POCKET WAIST APRONS

- ◆ Cotton-poly blend, machine wash and dry, wrinkle resistant
- ◆ Available in 4 colors
- ◆ 12-1/2"L x 21-3/4"W

ITEM	DESCRIPTION	UOM	CASE
WA-1221	Black	Each	12/60
WA-1221G	Green	Each	12/60
WA-1221R	Burgundy	Each	12/60
WA-1221RED	Red	Each	12/60
WA-1221W	White	Each	12/60



WA-1221



WA-1221R



WA-1221G



WA-1221RW



WA-1221RED



REUSABLE FACE MASKS

SIGNATURE CHEF



M/L L/XL



Camouflage, Adjustable



Gray, Adjustable



White, Adjustable



Black, Adjustable



White



Black

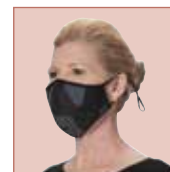
REUSABLE & ADJUSTABLE 2-PLY COTTON/POLY FACE MASKS

- ◆ Outer: 100% Polyester, Lining: 60/40 Cotton/Poly
- ◆ Machine washable
- ◆ Non-medical grade
- ◆ Comfort fit with contoured nose
- ◆ Adjustable soft elastic ear loops for lasting comfort

ITEM	COLOR	SIZE	UOM	CASE
MSK-3ML	Camo	M/L	2 Pcs/Pk	50/250
MSK-3LXL	Camo	L/XL	2 Pcs/Pk	50/250
MSK-4GML	Gray	M/L	2 Pcs/Pk	50/250
MSK-4GLXL	Gray	L/XL	2 Pcs/Pk	50/250



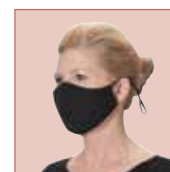
2 per pack, per style



REUSABLE & ADJUSTABLE 2-PLY COTTON FACE MASKS

- ◆ 100% Cotton
- ◆ Machine washable
- ◆ Non-medical grade
- ◆ Comfort fit with contoured nose
- ◆ Adjustable soft elastic ear loops for lasting comfort

ITEM	COLOR	SIZE	UOM	CASE
MSK-2WML	White	M/L	2 Pcs/Pk	50/250
MSK-2WLXL	White	L/XL	2 Pcs/Pk	50/250
MSK-2KML	Black	M/L	2 Pcs/Pk	50/250
MSK-2KLXL	Black	L/XL	2 Pcs/Pk	50/250



REUSABLE 2-PLY COTTON FACE MASKS

- ◆ 100% Cotton
- ◆ Machine washable
- ◆ Non-medical grade
- ◆ Comfort fit with contoured nose
- ◆ Soft elastic ear loops for lasting comfort

ITEM	COLOR	SIZE	UOM	CASE
MSK-1WML	White	M/L	2 Pcs/Pk	50/250
MSK-1WLXL	White	L/XL	2 Pcs/Pk	50/250
MSK-1KML	Black	M/L	2 Pcs/Pk	50/250
MSK-1KLXL	Black	L/XL	2 Pcs/Pk	50/250



FACE SHIELD



PFS-1



1-1/8" thick comfortable foam padding



Compatible w/ glasses and face mask

FACE SHIELD

Built to protect employees and customers from airborne contaminants.

- ◆ Provides a secure fit, with wide elastic headband to keep shield in place
- ◆ Extremely lightweight for long-lasting wear
- ◆ Thick foam padding for extra comfort
- ◆ Ultra-clear and anti-fog
- ◆ Compatible with safety glasses and/or other face masks

ITEM	DESCRIPTION	UOM	CASE
PFS-1	13" x 8-1/2"	Each	25/50

WHITE COTTON SERVICE GLOVES

Elevate the dining experience with white glove service.

- ◆ 100% cotton
- ◆ 12 gloves (6 pairs) per pack

ITEM	DESCRIPTION	COLOR	UOM	CASE
GLC-M	Medium Gloves	White	Doz	100
GLC-L	Large Gloves	White	Doz	100



6 pairs per pack

GLC-M

COAT HANGERS

- ◆ Sturdy metal hanging hook
- ◆ Notched arms prevent garments from slipping
- ◆ Drape pants or scarves over the horizontal bar

ITEM	DESCRIPTION	UOM	CASE
WCH-1	Wooden Coat Hangers	Doz	1/10



12 per box

WCH-1

COAT CHECK TICKETS

- ◆ Large, easy-read numbering
- ◆ Perforations tear without ripping
- ◆ Large hole fits over hanger hook

ITEM	DESCRIPTION	COLOR	UOM	CASE
CCK-5BL	500 Tickets	Blue	Box	20
CCK-5PK	500 Tickets	Pink	Box	20
CCK-5WT	500 Tickets	White	Box	20
CCK-5YL	500 Tickets	Yellow	Box	20



CCK-5BL



CCK-5PK

500 per box



CCK-5WT



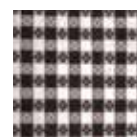
CCK-5YL

TABLE CLOTHS

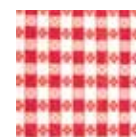
- ◆ Plastic checkered pattern with cotton lining

ITEM	DESCRIPTION	COLOR	UOM	CASE
TBCS-52B	52" x 52" Square	Blue	Each	24
TBCS-52G	52" x 52" Square	Green	Each	24
TBCS-52R	52" x 52" Square	Red	Each	24
TBCS-52K	52" x 52" Square	Black	Each	24
TBCO-70B	52" x 70" Rectangle	Blue	Each	24
TBCO-70G	52" x 70" Rectangle	Green	Each	24
TBCO-70R	52" x 70" Rectangle	Red	Each	24
TBCO-70K	52" x 70" Rectangle	Black	Each	24
TBCO-90B	52" x 90" Rectangle	Blue	Each	24
TBCO-90G	52" x 90" Rectangle	Green	Each	24
TBCO-90R	52" x 90" Rectangle	Red	Each	24
TBCO-90K	52" x 90" Rectangle	Black	Each	24

TABLE CLOTHS & CLIPS



Black



Red



TBCS, RED



Green



Blue

TBCS & TBCO-SERIES

STAINLESS STEEL TABLE CLOTH CLIP

- ◆ Securely holds tablecloth in place
- ◆ Fits up to 1-1/2" thick table tops

ITEM	DESCRIPTION	UOM	CASE
TBC-1	S/S Table Cloth Clip	Doz	6/60



TBC-1

12 per pack

FLATWARE ORGANIZERS



FC-PL



Notched lip to easily remove from holder

Perforations promote air circulation



FC-SS



FC-SL



FC-SERIES



FC-4H with FC-PL



FC-6H with FC-PL

FLATWARE / CUTLERY CYLINDERS & HOLDERS

◆ Items FC-PL / -SS / -SL fit into 4" diameter hole

ITEM	DESCRIPTION	UOM	CASE
FC-PL	Perforated Cylinder, Plastic	Each	36/144
FC-SS	Perforated Cylinder, S/S	Each	20/80
FC-SL	Solid Cylinder, S/S	Each	20/80
FC-4H	4-Holes, 2-Tier Holder, S/S	Each	1/4
FC-6H	6-Holes, 2-Tier Holder, S/S	Each	1/2



PL-4B



SCB-4

FLATWARE / CUTLERY COMPARTMENT BINS

ITEM	DESCRIPTION	UOM	CASE
PL-4B	4 Slot Plastic Flatware Bin	Each	1/12
SCB-4	4 Slot S/S Flatware Bin	Each	1/8



OGZ-6

FLATWARE / CUTLERY ORGANIZER

◆ 2-tier, 6-bin organizer

ITEM	DESCRIPTION	UOM	CASE
OGZ-6	Organizer Bin Set	Set	1
OGZ-1B	Single Bin for OGZ-6	Each	6



PCB-8

FLATWARE / CUTLERY DISHWASHER BASKET

◆ Built-in handles for easy transport

ITEM	DESCRIPTION	SIZE	UOM	CASE
PCB-8	8 Compartment Basket	17" x 8" x 6"	Each	12

DINING ROOM MAINTENANCE



FSW-11



DP-13C



BRM-60L



ROTARY SWEEPER

◆ Manual, quiet non-electric rotary sweeper with natural bristles and steel handle

ITEM	DESCRIPTION	UOM	CASE
FSW-11	11"L x 7-3/4"W x 43"H	Each	1/4

DUST PAN WITH COVER

◆ Built-in cover for mess-free transport

ITEM	DESCRIPTION	UOM	CASE
DP-13C	13"W Pan	Set	1/10

ECONOMY FLAGGED ANGLED BROOM W/55"L HANDLE

ITEM	DESCRIPTION	UOM	CASE
BRM-60L	Flagged, 60"L Handle	Each	12

All Winco® high chairs are compliant with ASTM F404-20 standards.

HIGH CHAIRS

STACKABLE RUBBERWOOD HIGH CHAIRS

- ◆ Secure rearward stability, permanent restraint bars, active 3-point harness restraint
- ◆ Assembled size: 20-1/8"W x 19-3/8"D x 29-1/4"H; seat at 20"H

ITEM	DESCRIPTION	UOM	CASE
CHH-101	Natural, Knocked Down	Each	1
CHH-101A	Natural, Assembled	Each	1
CHH-103	Mahogany, Knocked Down	Each	1
CHH-103A	Mahogany, Assembled	Each	1
CHH-104	Walnut, Knocked Down	Each	1
CHH-104A	Walnut, Assembled	Each	1



Rearward Stability

Permanent Restraint Bars

Active 3-Point Harness



CHH-101A

CHH-103A

CHH-104A

CHH-601

WOODEN PUB-HEIGHT HIGH CHAIR

- ◆ Assembled size: 22-1/4"W x 26-3/4"D x 41"H; seat at 32"H

ITEM	DESCRIPTION	UOM	CASE
CHH-601	Natural, Knocked Down	Each	1

HIGH-CHAIR STRAPS

ITEM	DESCRIPTION	UOM	CASE
CHH-2	2 Part Replacement Seat Belt For High Chairs, Black	Each	288
CHH-4*	3 Part Replacement Seat Belt For High Chairs, Garnet	Each	12/288

*Replaces CHH-3



CHH-2

CHH-4

All Winco® booster seats are compliant with ASTM F2640-20 standards.

BOOSTER SEATS

STACKABLE RUBBERWOOD BOOSTER SEATS

- ◆ Active 3-point harness restraint
- ◆ 2 additional straps below for securing to a chair
- ◆ Booster size: 11-3/4"W x 11-3/4"D x 10-1/2"H
- ◆ Minimum chair seat requirements: 15"W x 12"D x 10"H

ITEM	DESCRIPTION	UOM	CASE
CHB-701	Natural	Each	1
CHB-703	Mahogany	Each	1
CHB-704	Walnut	Each	1



CHB-703

CHB-701

Secured to chair

CHB-704

PLASTIC BOOSTER SEATS

- ◆ Resistant to dents, breakage, rust; Dishwasher safe
- ◆ Contoured seat, high sides, wide base & non-skid surface
- ◆ Active 3-point center harness restraint
- ◆ 2 additional, adjustable straps w/ buckle secure booster to the seat and back of a chair
- ◆ Booster size: 12"W x 11-7/8"D x 9-1/4"H
- ◆ Minimum chair seat requirement: 15"W x 13"D x 12"H

ITEM	DESCRIPTION	UOM	CASE
CHB-1PK	Black	Each	1
CHB-1P	Brown	Each	1



CHB-1P

CHB-1PK

INFORMATION SIGNS



SGN-SERIES
9" X 3"

- ◆ Durable plastic construction
- ◆ Self-adhesive backing for easy mounting
- ◆ Anti-glare surface

9"W X 3"H INFORMATION SIGNS

ITEM	DESCRIPTION	COLOR	UOM	CASE
SGN-301	Push	Black	Each	12/144
SGN-302	Pull	Black	Each	12/144
SGN-303	Hand Wash Only	Black	Each	12/144
SGN-304	Private	Black	Each	12/144
SGN-305	Employees Only	Black	Each	12/144
SGN-310	No Smoking	Black	Each	12/144
SGN-311	Men	Black	Each	12/144
SGN-312	Women	Black	Each	12/144
SGN-313	Restrooms	Black	Each	12/144
SGN-317	Restroom for Customer Use Only	Black	Each	12/144
SGN-318	Wash	Black	Each	12/144
SGN-322	Employees Must Wash Hands Before Returning to Work	Black	Each	12/144
SGN-326	Caution/Watch Your Step	Black	Each	12/144
SGN-327	Rinse	Black	Each	12/144
SGN-328	Reserved	Black	Each	12/144
SGN-329	Sanitize	Black	Each	12/144
SGN-330	WiFi	Black	Each	12/144
SGN-331	No Admittance	Black	Each	12/144
SGN-332	No Pets/Shoes Shirt Required	Black	Each	12/144
SGN-333	No Food or Drink	Black	Each	12/144
SGN-334	No Cell Phone Use, Please	Black	Each	12/144
SGN-335	No E-Cigarettes	Black	Each	12/144
SGN-336	No Soliciting	Black	Each	12/144
SGN-381W	Exit	White	Each	12/144
SGN-382W	Fire Extinguisher	White	Each	12/144



ENJUAGUE

Rinse
SGN-365

SOLO LAVADO A MANOS

Hand Wash Only
SGN-366

DESINFECTE

Sanitize
SGN-367

Hombres

Men
SGN-368

Mujeres

Women
SGN-369

9"W X 3"H INFORMATION SIGNS - SPANISH

ITEM	DESCRIPTION	COLOR	UOM	CASE
SGN-360	Employees Must Wash Hands	Black	Each	12/144
SGN-361	Employees Only	Black	Each	12/144
SGN-362	Restrooms	Black	Each	12/144
SGN-363	Wash	Black	Each	12/144
SGN-364	No Smoking	Black	Each	12/144
SGN-365	Rinse	Black	Each	12/144
SGN-366	Hand Wash Only	Black	Each	12/144
SGN-367	Sanitize	Black	Each	12/144
SGN-368	Men	Black	Each	12/144
SGN-369	Women	Black	Each	12/144



SGN-SERIES
6" X 9"

6"W X 9"H INFORMATION SIGNS

ITEM	DESCRIPTION	COLOR	UOM	CASE
SGN-601	No Smoking	Black	Each	12/72
SGN-603	Restrooms	Black	Each	12/72
SGN-651B	Women	Blue	Each	12/72
SGN-652B	Men	Blue	Each	12/72
SGN-653B	Accessible	Blue	Each	12/72
SGN-681W	Exit	White	Each	12/72
SGN-682W	Fire Extinguisher	White	Each	12/72
SGN-683W	In Case of Fire Do Not Use Elevator...	White	Each	12/72
SGN-684W	No Smoking Area	White	Each	12/72

6"W X 9"H INFORMATION SIGNS - WITH BRAILLE

ITEM	DESCRIPTION	COLOR	UOM	CASE
SGNB-607	All Gender Restroom	Black	Each	12/72
SGNB-608	All Gender Restroom w/ Accessible	Black	Each	12/72
SGNB-601	No Smoking	Black	Each	12/72
SGNB-603	Restrooms	Black	Each	12/72
SGNB-604	Exit	Black	Each	12/72
SGNB-605	Men	Black	Each	12/72
SGNB-606	Women	Black	Each	12/72
SGNB-651B	Women/Accessible	Blue	Each	12/72
SGNB-652B	Men/Accessible	Blue	Each	12/72
SGNB-653B	Accessible	Blue	Each	12/72



Tactile raised braille dots

INFORMATION SIGNS



SGNB-SERIES
6" X 9"

"SOCIAL DISTANCING" ANTI-SLIP FLOOR DECAL

Enhances awareness of social distancing standards.

- ◆ Bright yellow backdrop, bold black text, and accompanying graphic help to draw attention
- ◆ Durable construction holds up in high traffic areas
- ◆ Adhesive back allows for easy placement on floors or other smooth, solid surfaces
- ◆ 10 pieces per pack

ITEM	DESCRIPTION	UOM	CASE
PFD-12Y	12" Dia Decal	Pack	48



FLOOR DECAL



PFD-12Y



"FACE MASK REQUIRED" WINDOW CLING

Clearly inform customers of proper safety protocols.

- ◆ Clear vinyl clings to window - no adhesive required
- ◆ Removes clean & reusable to reposition as needed on smooth surfaces
- ◆ Mounts to glass from inside facing out
- ◆ 2 pieces per pack

ITEM	DESCRIPTION	UOM	CASE
WC-811	8-1/2" x 11" Cling	Pack	1/500



Adheres to inside, legible from outdoors

WINDOW CLING



WC-811



STANCHION SET



CGS-SETA

STANCHIONS & SIGN SET

Perfect for crowd control, restaurants, stores, casinos, and more.

- ◆ Great for providing directions to customers
- ◆ 8-1/2" x 11" signs fit CGSF-series stanchion frames and works with CGS-series retractable belt stanchions
- ◆ The set includes:
 - (1) Easy to read two-sided preprinted sign, "Practice Social Distancing"
 - (1) Black frame to hold the sign and easily mounts to stanchion post
 - (2) 34"H black stanchions, each with weighted base and built-in 6-1/2 ft long black retractable belt

ITEM	DESCRIPTION	UOM	CASE
CGS-SETA	Stanchion Set	Set	1



HOSTESS SIGN SET

HOSTESS SIGN SET

Complete set includes all you need to direct guests.

- ◆ 2-sided preprinted signs feature attractive gold lettering for optimum visibility
- ◆ 60" tall stand with heavy base & sturdy aluminum post
- ◆ Set includes frame, pole, base and 16 different messages

ITEM	DESCRIPTION	UOM	CASE
HTS-60K	Sign Frame w/Pole & Base	Set	1/4



HTS-60K



Authorized Personnel Only	(blank)	Careful, Wet Floor
Meeting In Progress	No Smoking Section	Place Order Here
Please Pay Here	Please Seat Yourself	Please Wait To Be Seated
Please Watch Your Step	Section Closed	Section Reserved
Smoking In Designated Area ONLY Thank You	Smoking Section	Thank You, Please Come Again

16 different messages included

STANCHION SIGN SYSTEM

- ◆ 34" high stanchions with heavy, sturdy base and built-in 6-1/2 ft long retractable belt (overall 35-1/2"H)
- ◆ Stanchions must be purchased in multiples of two (2)

ITEM	DESCRIPTION	UOM	CASE
CGS-38K	Black Stanchion	Each	2
CGS-38S	Stainless Steel Stanchion	Each	2
CGS-WB	Wall Bracket for CGS-38K/S	Each	100
CGS-K	Plstc Head w/Black Belt for CGS-38K/S	Each	12/48
CGSF-12K	Black Frame for CGS-38K	Each	1/4
CGSF-12S	Stainless Steel Frame for CGS-38S	Each	1/4

STANCHION SIGN SYSTEM



STANCHION FRAME SIGNS

- ◆ 2-sided pre-printed signs provide maximum visibility

ITEM	DESCRIPTION	UOM	CASE
SGN-802	Please Wait To Be Seated	Each	6/36
SGN-803	Line Forms Here	Each	6/36
SGN-804	Sorry Section Closed	Each	6/36
SGN-805	Exit	Each	6/36
SGN-806	Practice Social Distancing	Each	6/36
SGN-807	Area Closed for Cleaning	Each	6/36



SGN-800 SERIES

UNIVERSAL WIPES CONTAINER STANCHION MOUNT

- ◆ Mount fits most stanchion posts & CGS-series stanchions
- ◆ Mount designed to secure the container in place
- ◆ Holder size: 5-1/2" Dia x 5-1/2" H
- ◆ Designed to hold a sanitizing wipes container

ITEM	DESCRIPTION	UOM	CASE
SMWH-5K	Holder for Wipes Container	Each	6

STANCHION MOUNTS



SMWH-5K

UNIVERSAL HAND SANITIZER & SOAP DISPENSER STANCHION MOUNT

- ◆ Mount fits most stanchion posts & CGS-series stanchions
- ◆ Accommodates most sanitizer dispensers, including automatic units
- ◆ Mount designed to secure the dispenser in place
- ◆ Mount plate size: 6-3/4"W x 16-1/2"H
- ◆ Drip tray size: 7-1/2"W x 7-1/2"D

ITEM	DESCRIPTION	UOM	CASE
SMSD-16K	Holder for Universal Sanitizer/ Soap Dispenser	Each	6



SMSD-16K

UNIVERSAL JUG STANCHION MOUNT

- ◆ Mount fits most stanchion posts & CGS-series stanchions
- ◆ Accommodates 1 gallon jugs
- ◆ Mount designed to secure the jug in place
- ◆ Holder size: 7-1/4"W x 7-1/4"D

ITEM	DESCRIPTION	UOM	CASE
SMJH-9K	Holder for 1 Gallon Jug	Each	6



SMJH-9K

LED SIGNS



Visible from up to 100 feet away!

ALL-IN-ONE "OPEN" LED SIGN

Drive restaurant traffic with the one sign that says it all. Tailor this eye-catching sign to any combination of your message to broadcast your restaurant status and maximize customer attraction.

- ◆ Choose between 6 display messages
- ◆ Multiple light modes for optimal visibility
- ◆ Easy-press buttons illuminate messages individually or all together
- ◆ Bright, highly visible LED lettering grabs attention from up to 100 feet away!
- ◆ 40" chain with 18" drop to hang on wall or window
- ◆ 10ft power adaptor cord attaches to bottom of sign and plugs into any standard wall outlet
- ◆ 110-240V ~ 50/60 Hz

ITEM	DESCRIPTION	UOM	CASE
LED-20	19" x 24", English	Each	1/5
LED-21	19" x 24", Spanish	Each	1/5

UL LED-20



UL LED-21



Set "OPEN" to blink, scroll or remain static



40" chain with 18" drop



One-click illuminates messages individually or all together



10' power adaptor cord



UL LED-6



UL LED-10

- ◆ Highly visible light-emitting diode/LED technology
- ◆ Lightweight; chain for hanging included
- ◆ Black adaptor with 118"L (3 meters) power cord included
- ◆ 120V ~ 60Hz

"OPEN" LED SIGNS

- ◆ LED-6: 22"L x 1-1/2"W x 13"H
- ◆ LED-10: 22-3/4"W x 1-3/4"W x 14"H

ITEM	DESCRIPTION	UOM	CASE
LED-6	Rectangle, 3 Flashing Patterns	Each	1/5
LED-10	Oval, Dust Cover, 3 Flashing Patterns	Each	1/5



UL LED-11

"PIZZA" LED SIGN

- ◆ LED-11: 22-3/4"L x 1-3/4"W x 14"H

ITEM	DESCRIPTION	UOM	CASE
LED-11	Oval, 3 Flashing Patterns	Each	1/5

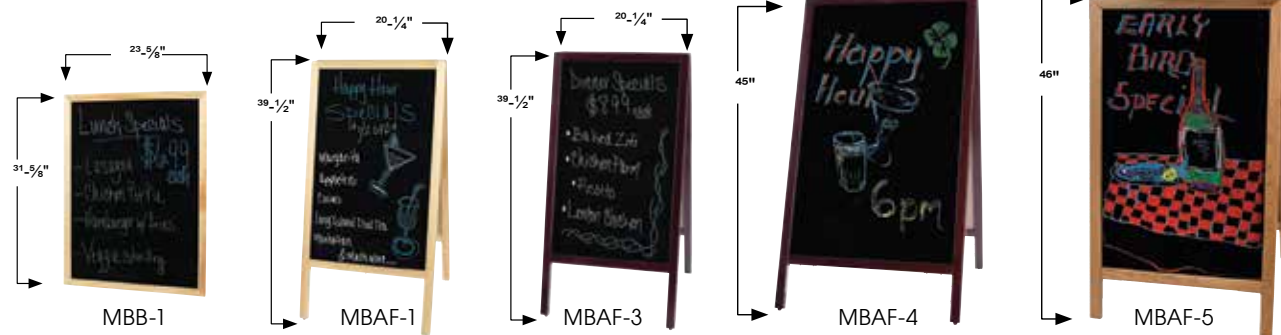
Refer to BenchmarkUSA™ Equipment for Concessions LED signs



- ◆ High-tech Absol-Flat black glossy surface allows for easy writing
- ◆ Solid 1-1/4" wide frames with double reinforced joints

SIGN BOARDS, MARKERS, ERASER

WOODEN FRAME MARKER BOARDS



ITEM #	DESCRIPTION	INCLUDES	SIZE	UOM	CASE
MBB-1	Natural	1 Standard White Marker & Eraser	23-5/8"L x 3/4"W x 31-5/8"H	Set	6
MBB-3	Mahogany	1 Standard White Marker & Eraser	23-5/8"L x 3/4"W x 31-5/8"H	Set	1/6

DUAL-SIDED SIDEWALK A-FRAME MARKER BOARDS



ITEM #	DESCRIPTION	INCLUDES	SIZE	UOM	CASE
MBAF-1	Natural	4 Standard Markers & Eraser	20-1/4"L x 2"W x 39-1/2"H	Set	1
MBAF-3	Mahogany	4 Standard Markers & Eraser	20-1/4"L x 2"W x 39-1/2"H	Set	1
MBAF-4	Mahogany	4 Standard, 2 Deluxe Plus Markers & Eraser	25"L x 2"W x 45"H	Set	1
MBAF-5	Premium White Oak	2 Standard, 4 Deluxe Plus Markers & Eraser	26"L x 2"W x 46"H	Set	1



MBB-3 BOARD, MBBE-3 EASEL



MBBE-1

PREMIUM TRIPOD DISPLAY EASEL

- ◆ A stylish lift for the wood frame marker boards
- ◆ Solid, 1" thick wooden frame has two adjustable planes with pure copper knobs, and comes with rubber feet
- ◆ Factory assembled for superior stability

ITEM #	DESCRIPTION	SIZE	UOM	CASE
MBBE-1	Natural	23-1/4"L x 1"W x 61"H	Set	1
MBBE-3	Mahogany	23-1/4"L x 1"W x 61"H	Set	1

MARKERS & ERASER

ITEM #	DESCRIPTION	SIZE	COLOR	UOM	CASE
MBPM-B	Deluxe Plus	15g Ink, 1/16" Chisel	Neon Blue	Each	72/288
MBPM-G	Deluxe Plus	15g Ink, 1/16" Chisel	Neon Green	Each	72/288
MBPM-O	Deluxe Plus	15g Ink, 1/16" Chisel	Neon Orange	Each	72/288
MBPM-P	Deluxe Plus	15g Ink, 1/16" Chisel	Neon Pink	Each	72/288
MBPM-R	Deluxe Plus	15g Ink, 1/16" Chisel	Neon Red	Each	72/288
MBPM-U	Deluxe Plus	15g Ink, 1/16" Chisel	Neon Purple	Each	72/288
MBPM-W	Deluxe Plus	15g Ink, 1/16" Chisel	Neon White	Each	72/288
MBPM-Y	Deluxe Plus	15g Ink, 1/16" Chisel	Neon Yellow	Each	72/288
MBM-B	Standard	12g Ink, 1/4" Bullet	Neon Blue	Each	72/288
MBM-G	Standard	12g Ink, 1/4" Bullet	Neon Green	Each	72/288
MBM-P	Standard	12g Ink, 1/4" Bullet	Neon Pink	Each	72/288
MBM-R	Standard	12g Ink, 1/4" Bullet	Neon Red	Each	72/288
MBM-W	Standard	12g Ink, 1/4" Bullet	Neon White	Each	72/288
MBM-Y	Standard	12g Ink, 1/4" Bullet	Neon Yellow	Each	72/288
MB-E	Easy Wipe Eraser		Black	Each	72/288



Deluxe Plus Broad Chisel Tip Markers

Standard Bullet Tip Markers



MB-E



DELUXE PLUS SERIES



STANDARD SERIES

