



## Installation Instructions

Thank you for purchasing a UTV enclosure manufactured in the USA with pride by 3SI UTV. Your enclosure is made of heavy duty fabric that is water repellent and resistant to mildew, ultra-violet rays and abrasion. With proper installation and care you can expect many years of service from your 3SI UTV enclosure.

### SOME IMPORTANT NOTES BEFORE GETTING STARTED....

- The enclosure attaches to your UTV's cab frame with Velcro. The technical term for Velcro is hook and loop. Loop is the soft side and hook, the rough side. Loop has been sewn into the enclosure at various points. Adhesive hook has been supplied to attach to your cab frame, corresponding to the sewn-in loop. If you struggle with placement of the adhesive hook, with the enclosure held to the cab frame, note the locations of the sewn-in loop. The adhesive hook is attached to the cab frame at those locations.
- The adhesive hook should be applied at a temperature of 60 degrees or above. **For maximum adhesion, when the adhesive hook is in place, allow the adhesive to cure for 24 hours before attaching the loop to the hook.**
- Clean the surfaces the adhesive hook will be attached to before beginning installation. A light cleaning with mild soap and water is best. A little Windex works great. Do NOT wax or clean with a compound that leaves the frame slick. The adhesive hook will not stick to a slick surface. Again, a light cleaning is best.
- Your enclosure is not a "one size fits all" product. The enclosure was designed and manufactured specifically for your model UTV. As a result, the enclosure should fit square and snug to the cab frame.
- Periodic cleaning of your enclosure with mild soap and water is recommended to minimize accumulations of dirt.
- Clean the vinyl windows with mild soap, water, and a soft cloth to avoid scratches. DO NOT USE ANY DETERGENTS, WINDOW CLEANERS, SOLVENTS OR CHEMICALS TO CLEAN VINYL WINDOWS.
- Clean your enclosure and allow it to dry before removing for storage. **Never fold your enclosure to store.** Roll the enclosure to avoid creasing the vinyl windows. Creases in the vinyl windows cannot be removed. **CREASING THE VINYL WINDOWS VOIDS ALL WARRANTIES AND GUARANTEES.**
- The only enclosures manufactured by 3SI UTV that can be hauled when installed are Lexan windshields, full cab enclosures, and door/rear window combos with top and windshield installed. However, the enclosures should be tied down before hauling. Speed should not exceed 55 mph while hauling to prevent ripping and shredding of the material and zippers. REMOVE ALL OTHER ENCLOSURES BEFORE HAULING.

**PLEASE READ AND FOLLOW THE DETAILED INSTRUCTIONS THAT ARE ATTACHED.**



## Yamaha Rhino Full Cab (Full Doors)

### Installation Instructions

You have just purchased the best Enclosure for your Utility Terrain Vehicle available on the market today. Your Enclosure is made of Heavy Duty Fabric that is Water Repellent and resistant to Mildew, Ultra-Violet Sun Rays and Abrasion. With proper installation and care you can expect many years of long lasting fit, color and service life from your **3SI UTV Cab Enclosure**.

**Step 1:** Remove your 3SI UTV Cab Enclosure and Velcro kit from the shipping box. Along with the windshield and enclosure, the following contents are included...

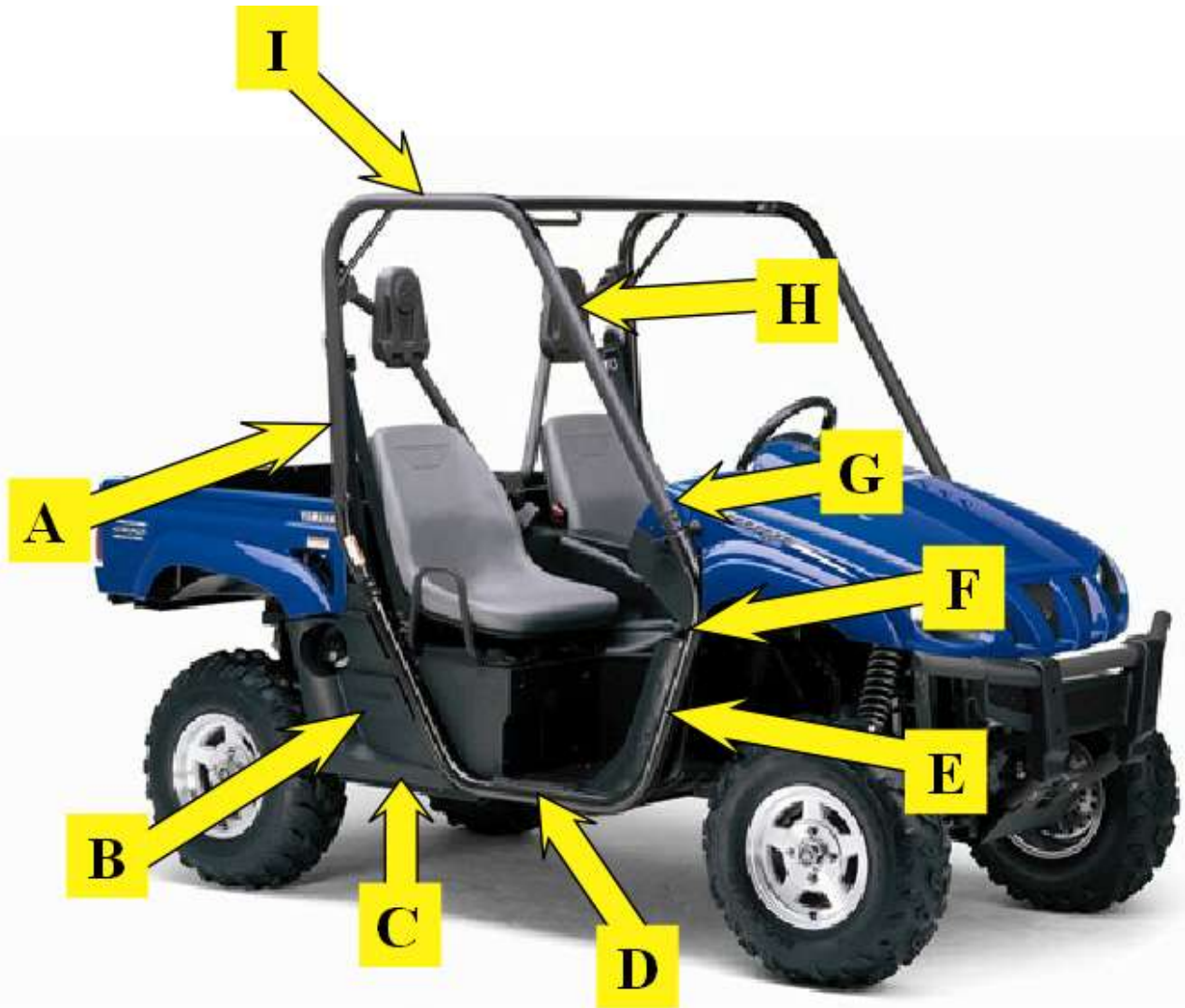
Reference	Quantity/Size	Placement
No Pic	1-42"	Bottom of Rear Panel-Horizontal
A	2-6"	Rear Roll Bar Uprights-Outside Edge-Vertical
B	2-7"	Back/Lower Section of Door Panels -Horizontal
C	2-8"	Bottom/Back of Door Panels-Horizontal
D	2-25"	Bottom of Door Panels-Horizontal
E	2-8"	Bottom of Wings- Vertical Along Roll Bar
F	2-6"	Front of Wings-Horizontal Wrapped Around Roll Bar
G	2-8"	Lower Front roll bars-Vertical-Outside Edge
H	2-8"	Upper Front roll bars-Vertical-Outside Edge
I	2-8"	Side Roll Bars-Horizontal Outside Edge

An additional strip of 2" Velcro has been included in your shipment if needed. The formal name for Velcro is hook and loop. The hook side is rough and the loop side is fuzzy. The strips listed above are hook. The corresponding loop strips are sewn into your enclosure. **If you struggle with placement of the adhesive hook strips, place the enclosure on the cab frame and match the placement of the adhesive hook to the sewn in loop strips.**

**Note:** before applying adhesive Velcro Strips to your vehicle, surfaces should be free of dust, dirt and oil. Clean vehicle surfaces with water or Windex only. Do not use solvents to prepare your vehicle surfaces for Velcro application.

**Step 2:** Place the enclosure on the cab frame. Square and align the enclosure to the frame. Note the location of Velcro loop strips that are sewn into the top and back panel. Adhesive Velcro hook strips will be installed to correspond to the Velcro loop.

**Step 3:** Starting in the back and working forward, remove the clear plastic backing from the adhesive Velcro hook strips, and install as indicated on page 1. The following picture shows the approximate placement of the adhesive strips.

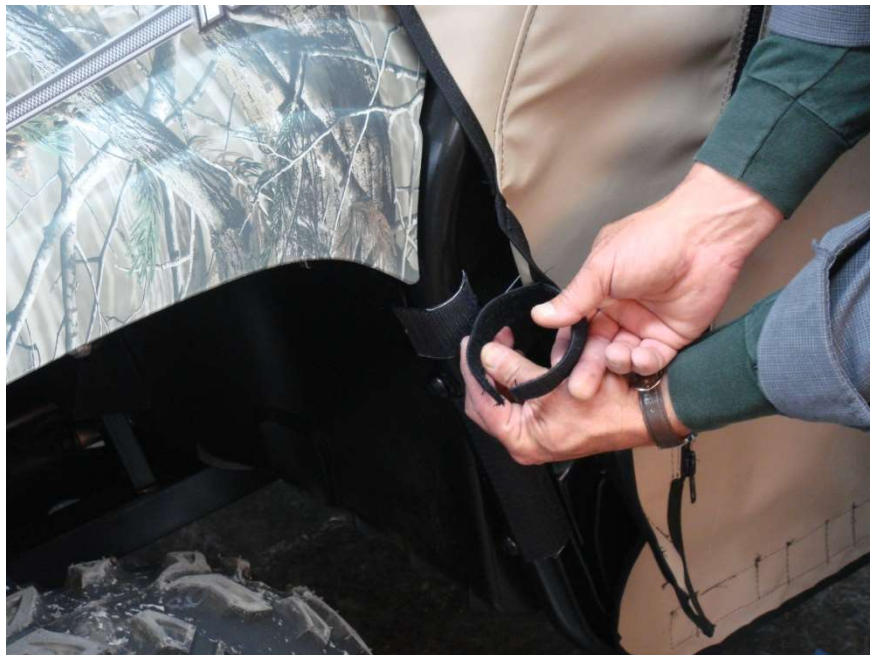


**Step 4:** After all adhesive Velcro strips are attached, begin attaching enclosure by first squaring the back of the enclosure to the rear of the cab frame and attaching the sewn-in Velcro loop to the 42" adhesive strip at the base of the back panel.

**Step 5:** Continue working forward by attaching each of the sewn-in Velcro loop strips to the attached adhesive Velcro hook strips. As you work forward, tighten the enclosure to the cab frame by pulling it forward and down to achieve a snug fit. Adjust the enclosure as needed to align.

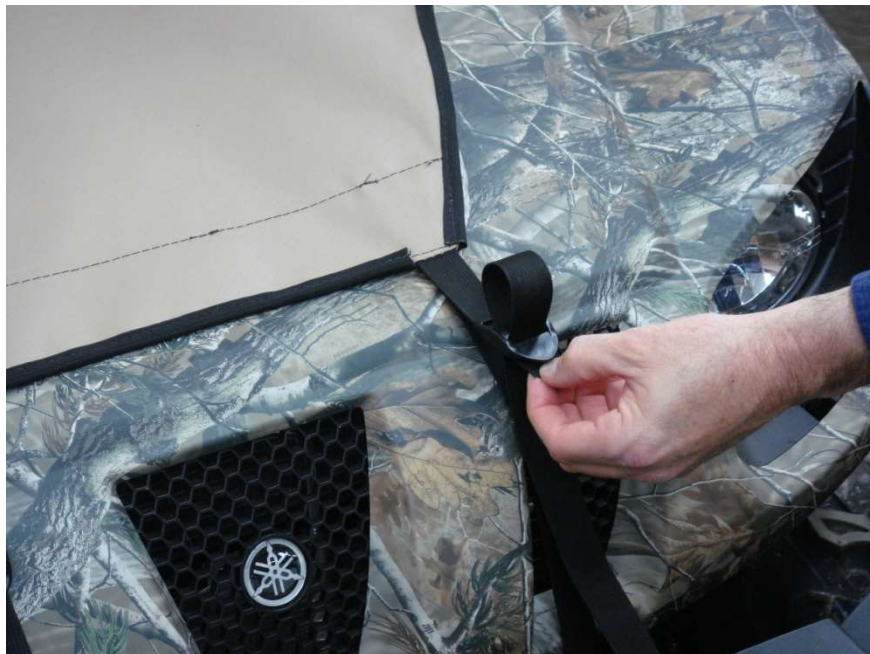


Pulling upward & outward on the 6" Rear Roll Bar Post Enclosure Velcro Tabs, attach Rear Roll Bar Post Enclosure tabs to installed 6" Velcro Strips as shown.



Attach front side lower Roll Bar Frame Velcro Tabs to installed 6 inch Velcro Strips by wrapping the tab around the Roll Bar Frame and Velcro Strip as shown.

**Step 6:** Fasten pre-attached Enclosure Front Hood Straps to top bar of Vehicle front bumper as shown in figure 13.1. Bringing the end of the straps up to the latch buckle, run the end through the back of the top buckle opening and then through the front of the lower buckle opening as shown below. DO NOT FULLY TIGHTEN FRONT HOOD STRAPS AT THIS TIME.



**Step 7:** Starting with the top Front Roll Bar Post Enclosure tabs pull outward and downward attaching tabs to 8" inch Velcro Strips on the Roll Bar as shown in figure 14.1. Repeat this process with the lower Front Roll Bar Enclosure Tabs making sure that the Windshield is centered between the Roll Bar posts.

**Step 8:** Tighten Front Hood Straps by pulling downward from the buckle on both straps at the same time.

**Step 9:** Zip Doors closed and attach Velcro Tabs to respective Velcro Strips.

**Step 10:** Repeat all steps necessary to achieve a snug fit as shown below.



**See enclosed Product Care sheet for instructions on how to properly care for your 3SI UTV Enclosure.**



## Care Instructions

### Heavy Duty Marine and Mil-Spec Military Fabric Cleaning

All 3SI UTV Enclosure Heavy Duty Marine and Military Camo fabrics are guaranteed against excessive loss of color or strength under normal exposure and use conditions. Periodic cleaning with a solution of 4 ounces of bleach and 2 ounces of soap (NOT DETERGENTS) in one gallon of water is recommended to minimize accumulations of dirt, bird droppings and other contaminants which can support surface mildew and stain fabric.

### Soft Vinyl Window Cleaning

3SI UTV Enclosure Vinyl Windows will remain clear and provide great visibility under normal exposure conditions if properly cleaned. Periodic cleaning with a solution of 1 ounce of soap in one gallon of water is all that is needed to maintain good window cleanliness and visibility. Caution: DO NOT USE ANY DETERGENTS, WINDOW CLEANERS, SOLVENTS or CHEMICALS OF ANY KIND TO CLEAN VINYL WINDOWS AS THESE WILL CLOUD THE WINDOWS. ALSO, NEVER RUB WINDOWS WITH A DRY CLOTH OR RAG.

### Storage Recommendations

Before removing the 3SI UTV Enclosure from your vehicle for storage, clean the Fabric and Vinyl Windows thoroughly as indicated above. Any dirt remaining on the Enclosure may scratch Vinyl Windows while in storage. Once the Enclosure has been cleaned it should be placed on a large flat surface. Lay the Enclosure out so that Vinyl Windows are in a flat position. Fold the doors over the rear panel first then fold the top and windshield on top of the doors keeping the Vinyl Windows flat. Caution: **FOLDING VINYL WINDOWS WILL CAUSE PERMANENT CREASE DAMAGE AND WILL VOID ALL WARRANTIES.** Once the Enclosure is folded keeping all Vinyl Windows flat, begin rolling the Enclosure into an 8" roll. Place the 8" roll into a box and store at normal room temperature. To ensure long life of your enclosure it is best not to store in extreme temperatures.

### Hauling

The ONLY products manufactured by 3SI UTV that can be hauled while installed are the hard windshields, full cab enclosures, and door/rear window combos with top and windshield installed. **However, the full cab enclosures and door/rear window combos should be tied down before hauling.** Speed should not exceed 55 mph while hauling to prevent ripping and shredding of the material and zippers. NEVER HAUL INSTALLED SOFT TOPS, WINDSHIELD TOP COMBOS, AND SUMMER CABS. **REMOVE BEFORE HAULING.**