



Polaris Razor XP PRO

FULL CAB

Your enclosure is made of heavy duty fabric that is water repellent and resistant to mildew, ultra-violet rays and abrasion.

Surface Preparation Instructions and Guidelines

Cleaning: To achieve a strong bond between Velcro adhesive and UTV surface, you must clean the surface. Use a mixture of 50% alcohol and 50% water to remove dirt, mud and dust from roll bars and plastic body components. Let dry. Repeat this process 3 times.

The adhesive hook should be applied at a temperature of 70 degrees or above.

Bond between UTV and adhesive hook is dependent upon the amount of adhesive to surface contact development. Firm application pressure develops a better adhesive contact and improves bond strength.

After application, the bond strength increases and approaches the ultimate bond strength after 72 hours. Bond strength build up: 20 min equals 50% bond strength, 1 hour equals 75% bond strength, one day equals 90% bond strength, and 3 days equals 100% bond strength.

More tips for installation.

Two is better than one: We recommend a second person be involved for the installation process. Getting the panel in the correct position takes some pulling and tugging, we find the process runs smoother when there are two people involved.

Test adhesion: Use a small piece of Velcro, remove backing and adhere to roll bars. Wait 20 minutes, Velcro should already be difficult to remove. If the Velcro comes off with ease, clean the roll bars again.

Still having trouble with adhesion: If Velcro is still not adhering to the roll bars, use a piece of hook (rough side of Velcro) to "rough up" the surface of your roll bar. We do not recommend this for the plastic body of your UTV, it will scratch.

Unsure about Velcro placement: With-out removing the white backing, attach the Velcro to your enclosure panel. Hold panel up to the UTV and note the area that the Velcro should attach. You can use the double-sided straps with-out Velcro to help hold up the panel while you remove the white backing and adhere sticky Velcro. We will send extra Velcro that can be used to hold the enclosure to the cab frame for easy notation of Velcro placement.

Attaching panel: Attach the panel top first, then work your way around pulling the tabs and sticking them to the corresponding adhesive Velcro. The binding (black trim) of the panel should align to the middle of the roll bar.

Installation Instructions

Step 1: Remove your 3SI UTV Cab Enclosure and Velcro kit from the shipping box.

Step 2: Remove existing windshield and hard top.

Step 3: Clean all surfaces on which you will be placing the adhesive Velcro according to the surface preparation instructions. Wait until the surfaces are dry.

Step 4: Remove the backing from the adhesive hook strips and install as indicated in the following adhesive hook table and pictures. Press firmly.

Step 5: Wait 72 hours! This step is very important to the bond strength between UTV and adhesive Velcro. The longer you wait the harder it will be to remove the adhesive Velcro.

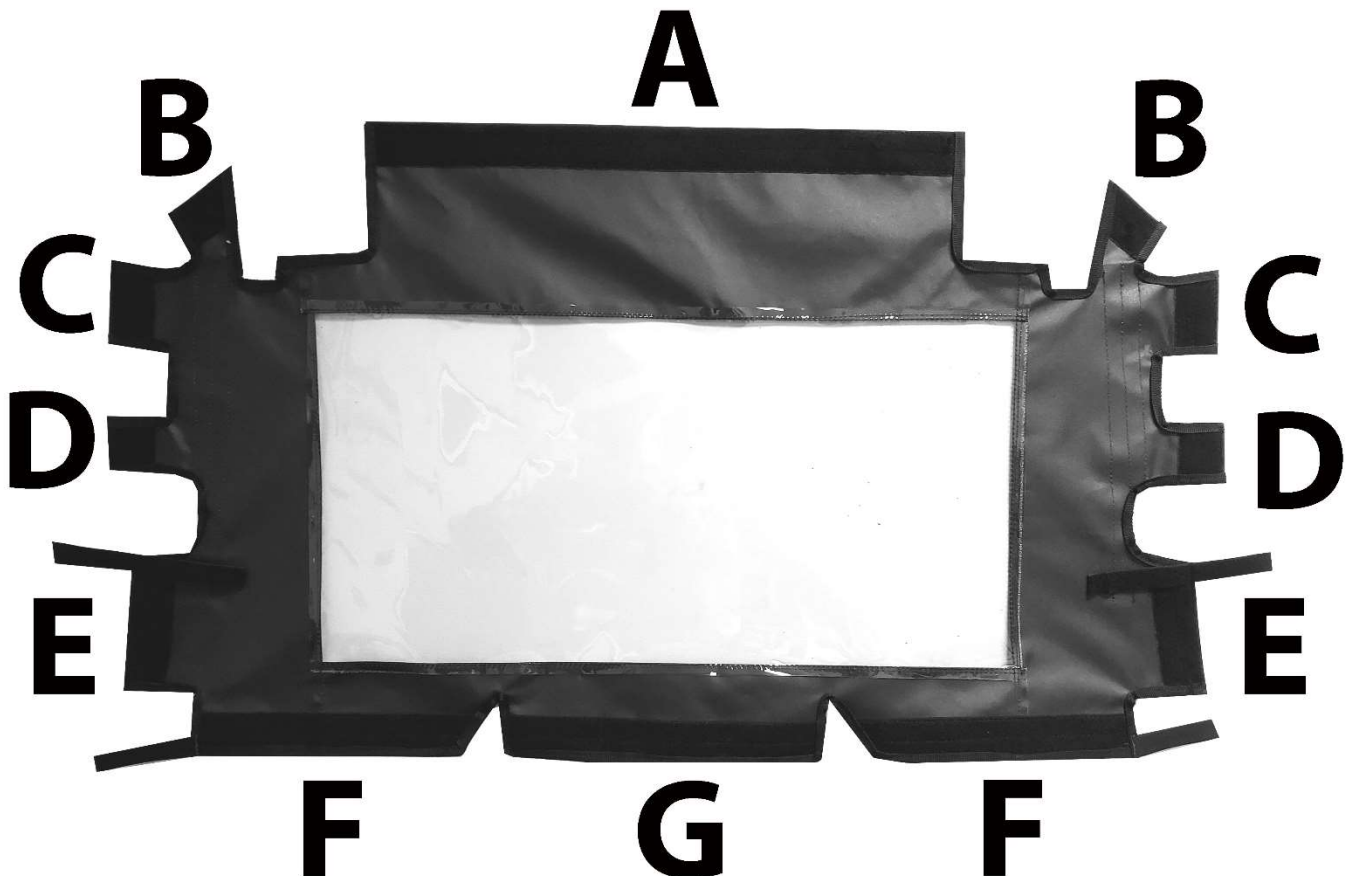
Step 6: After all adhesive Velcro strips are attached, begin attaching each panel to the cab frame.

Step 7: After all panels are attached work your way around the UTV, remove, pull, and reattach, each Velcro tab to achieve a tight fit. You may need to do this a few times.

Step 8: When your enclosure is in the correct position the binding or trim around the panels will rest in the center of the roll bar. If you have a windshield the binding, will rest along the edge of your windshield.

Step 9: Re-install your windshield and hard top.

POLARIS RAZOR XP PRO REAR PANEL



Reference	Qty / Size	Placement
A	1-27"	Attach horizontally to top rear roll bar toward the inside of the cab. (FIGURE 1)
B	2-3"	Attach to the top of the rear roll bar. (FIGURE 2)
C	2-4"	Attach to the side of the rear roll bar. (FIGURE 3)
D	2-3"	Attach to the side of the rear roll bar.(FIGURE 3)
E	2-6"	Attach the interior of the bed. (FIGURE 3)
F	2-13"	Attach to the bed.(FIGURE 3)
G	2-15"	Attach to the wall of the bed. (FIGURE 3)

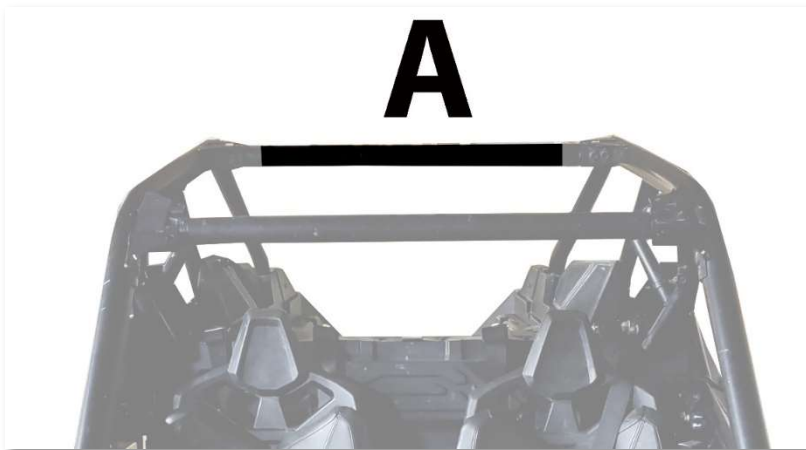


Figure 1: SHOWS POSTION OF VELCRO STRIP (A)

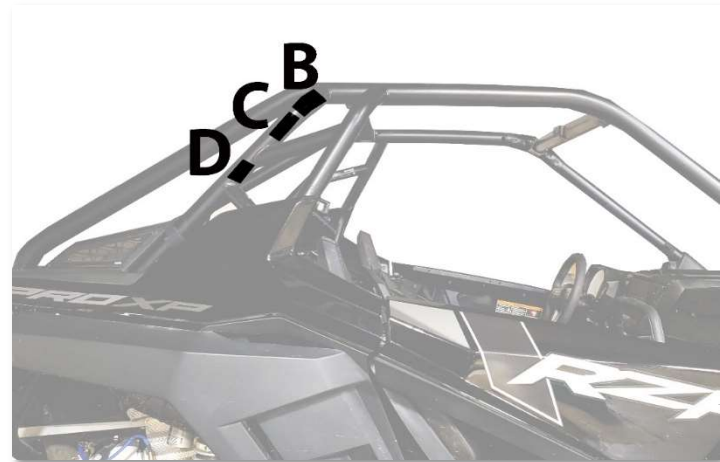
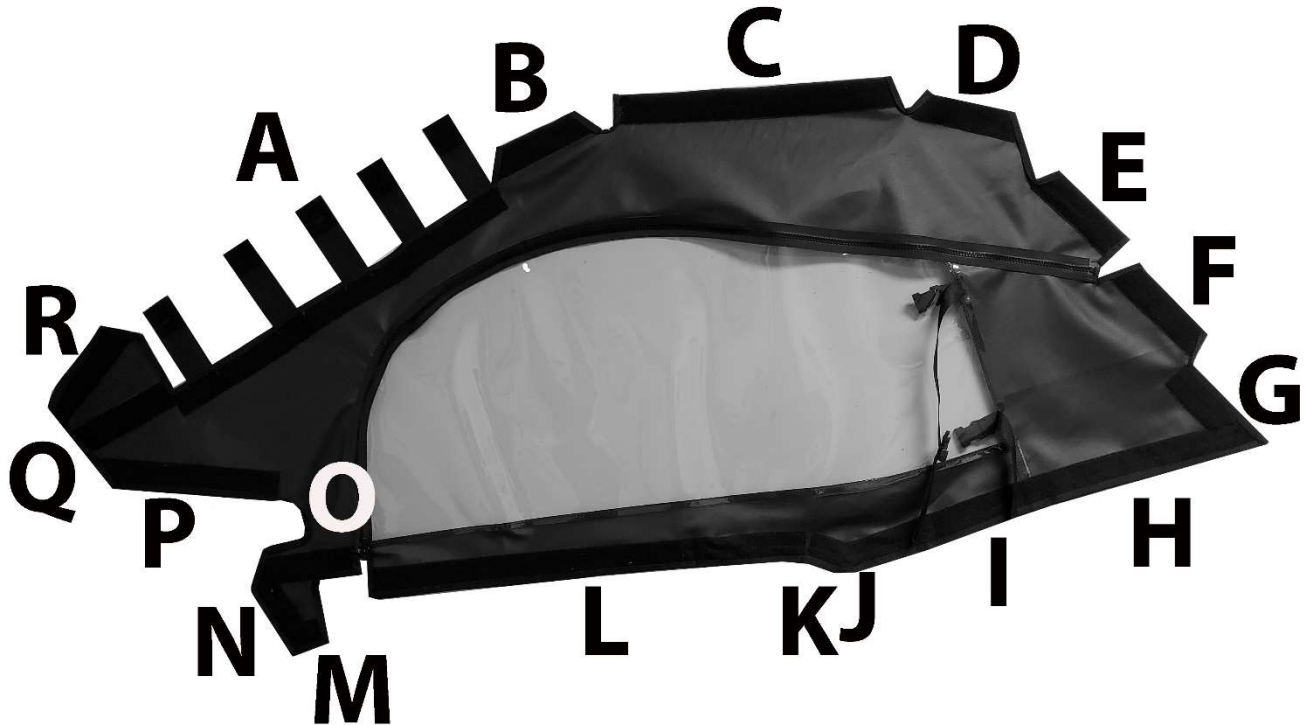


Figure 2: SHOWS POSITION OFVELCRO STRIPS (B, C, D)



Figure 3: SHOWS POSITION OF VELCRO STRIPS (F,G)

DOOR KIT



ADHESIVE VELCRO CHART

Reference	Qty / Size	Placement
A	2-25"	Down the outside of the front roll bar. (FIGURE 1)
B	2-6"	Top of the roll bar on the front bracket. (FIGURE 2)
C	2-18"	Inside of the top side roll bar. (FIGURE 3)
D	2-7"	Top of the roll bar back bracket. (FIGURE 4)
E	2-6"	These tabs will stick to the Velcro sewn on the back of the back panel. (FIGURE 5)
F	2-6"	These tabs will stick to the Velcro sewn on the back of the back panel. (FIGURE 5)
G	2-7"	Outside back roll bar down to the end of the bar. (FIGURE 5)
H	2-13"	Outside on body of utv. (FIGURE 6)
I	2-9"	Outside on body of utv. (FIGURE 6)
J	2-3"	Outside on body of utv. (FIGURE 6)
K	2-3"	Outside on body of utv. (FIGURE 6)

L	2-28"	Outside on body of utv. (FIGURE 6)
M	2-3"	These strips will be placed in various spots near the door latch. You may need to cut adhesive strips and place them around the door latch corresponding to the soft Velcro on your door kit. (FIGURE 7)
N	2-4"	These strips will be placed in various spots near the door latch. You may need to cut adhesive strips and place them around the door latch corresponding to the soft Velcro on your door kit. (FIGURE 7)
O	2-6"	These strips will be placed in various spots near the door latch. You may need to cut adhesive strips and place them around the door latch corresponding to the soft Velcro on your door kit. (FIGURE 7)
P	2-12"	Across the top of the front fender. (FIGURE 8)
Q	2-7"	On the top of the bottom front roll bar. (FIGURE 8)
R	2-7"	Top of the hood near roll bar. (FIGURE 8)

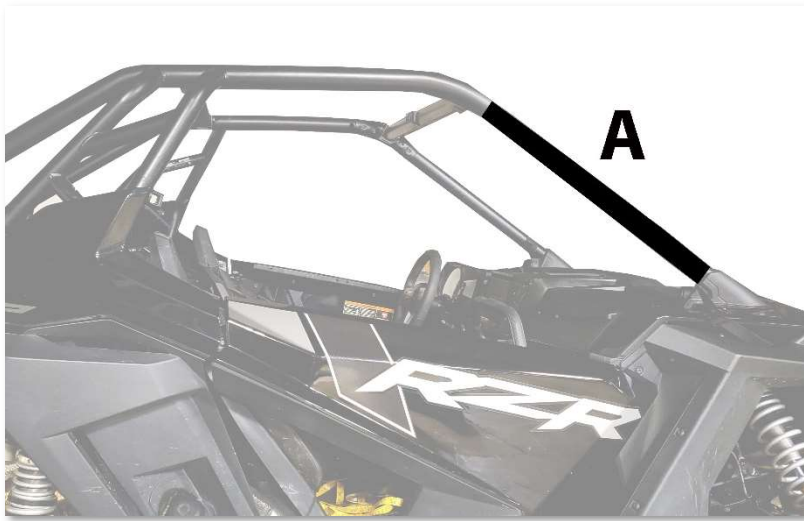


Figure 1: SHOWS POSITON OF VELCRO STRIPS (A)



Figure 2: SHOWS PLACEMENT OF VELCRO STRIPS (B).

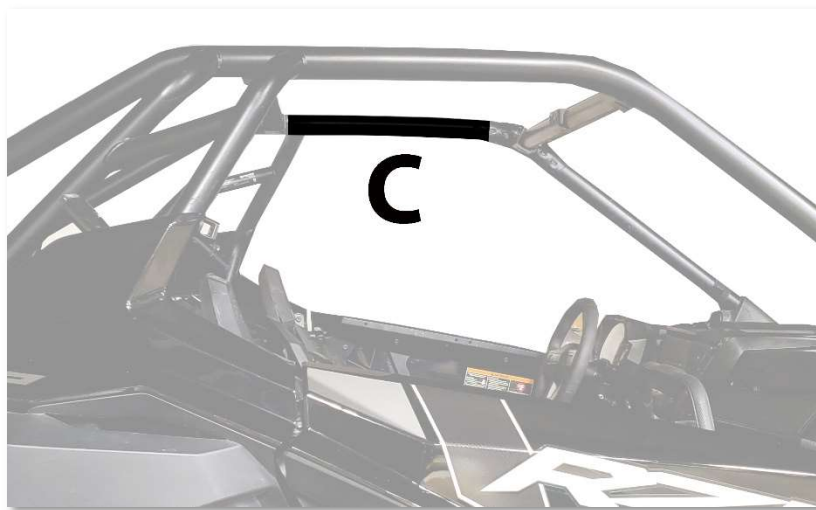


Figure 3: SHOWS PLACEMENT OF VELCRO STRIPS (C).

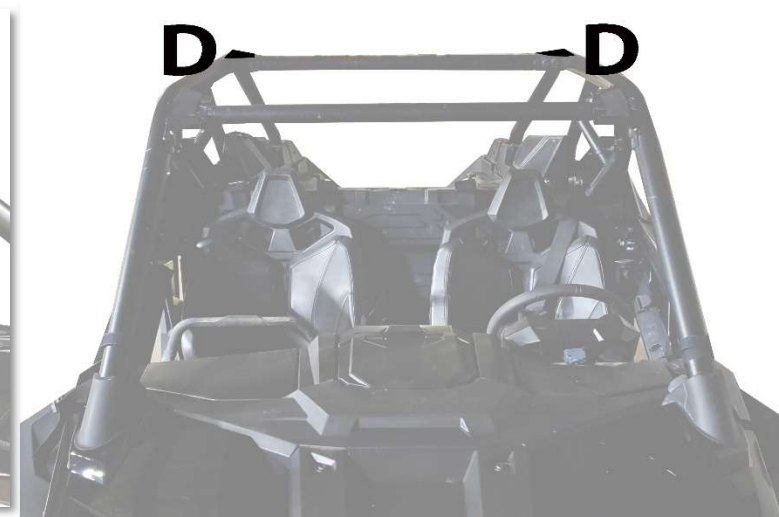


Figure 4: SHOWS POSITION OF VELCRO STRIPS (D)



Figure 5: SHOWS PLACEMENT FOR VELCRO STRIPS (E F G). PLACE ON EITHER SIDE.



Figure 6: SHOWS PLACEMENT OF VELCRO STRIPS (H I J K L). PLACE ON EITHER SIDE.



Figure 7: SHOWS PLACEMENT OF VELCRO STRIPS (M N O). PLACE ON EITHER SIDE.

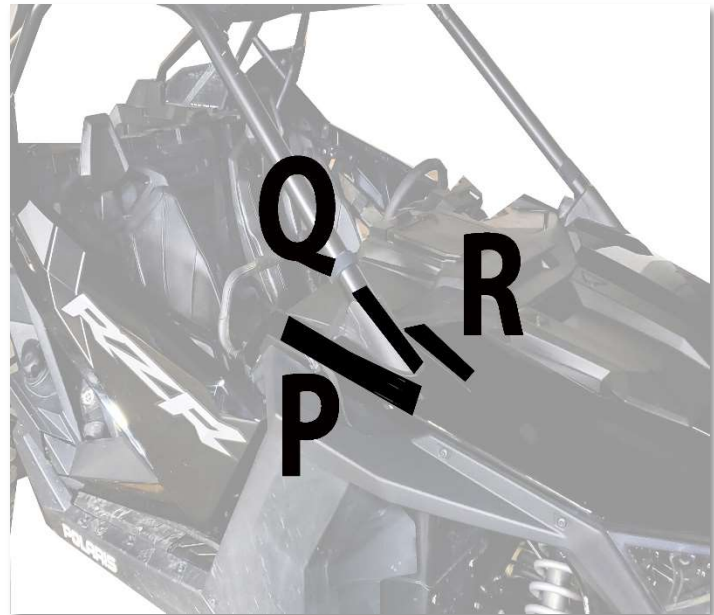


Figure 8: SHOWS PLACEMENT OF VELCRO STRIPS (P Q R) PLACE ONE ON EACH SIDE.



Figure 9: Upon completion of installation, your door kit will resemble the above photo. Door kit should be smooth and fit tight.

**POLARIS RAZOR
TOP CAP**



PICTURE SHOWS THE TENSION STRAPS ATTACHED TO YOUR TOP CAP. PULL THE TENSION STRAPS TO ADJUST THE POSITION OF YOUR TOP CAP.

THE DOUBLE-SIDED STRAP IS CIRCLED YOU WILL CONNECT THIS STRAP TO THE VELCRO YOU INSTALL ON YOUR MACHINE



ADHESIVE HOOK TABLE

REFERENCE	QUANTITY/SIZE	PLACEMENT
A	8-6"	WRAP STRIPS AROUND ROLL BAR

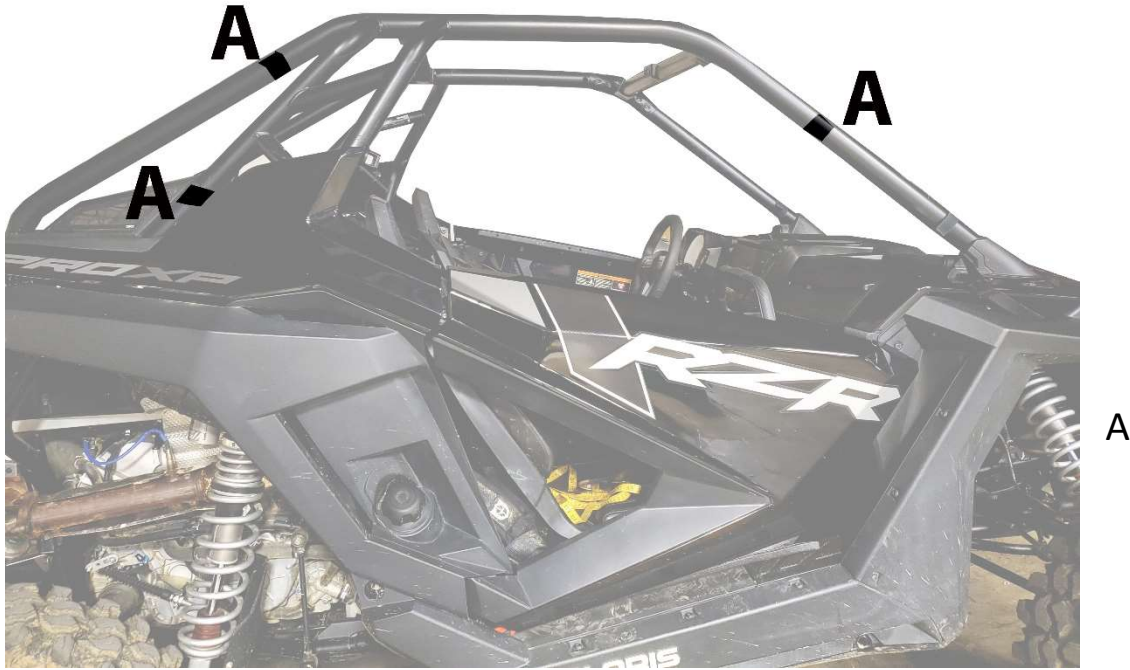


Figure 1: WRAP THESE VELCRO STRIPS AROUND THE ROLL BAR AND ATTACH DOUBLE-SIDED STRAP.

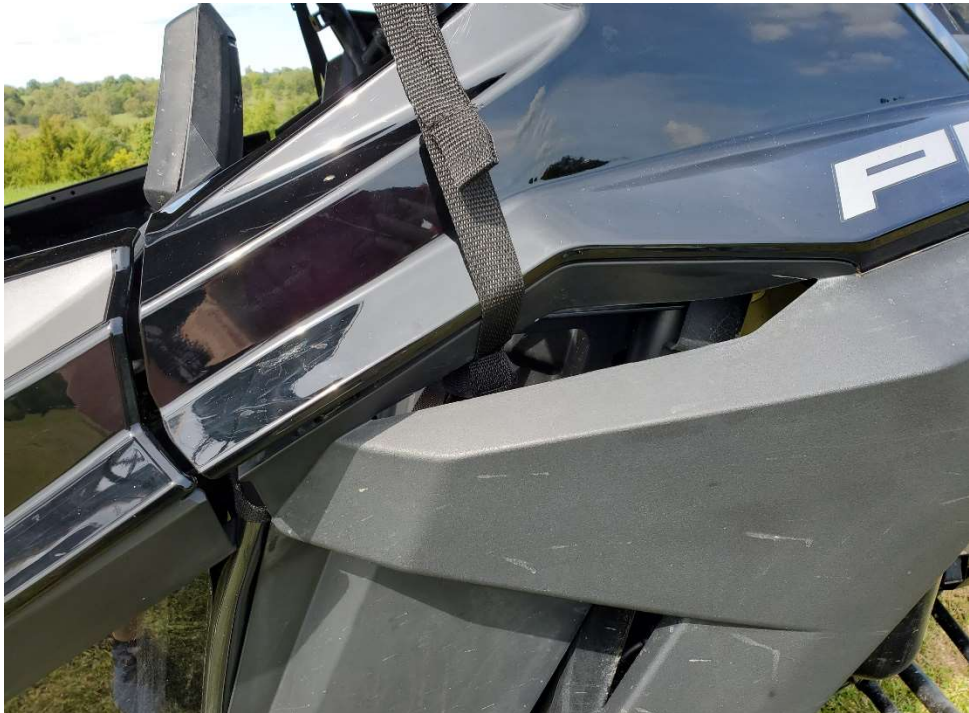


Figure 2: WRAP THE STRAP AROUND THE BAR INSIDE THE GAP BEHIND THE SEAT.

IF YOU HAVE A WINDSHIELD REMOVE THE WINDSHIELD INSTALL THE STRAPS AND REINSTALL THE WINDSHIELD





Care Instructions

Heavy Duty Marine and Mil-Spec Military Fabric Cleaning

All 3SI UTV Enclosure Heavy Duty Marine and Military Camo fabrics are guaranteed against excessive loss of color or strength under normal exposure and use conditions. Periodic cleaning with a solution of 4 ounces of bleach and 2 ounces of soap (NOT DETERGENTS) in one gallon of water is recommended to minimize accumulations of dirt, bird droppings and other contaminants which can support surface mildew and stain fabric.

Soft Vinyl Window Cleaning

3SI UTV Enclosure Vinyl Windows will remain clear and provide great visibility under normal exposure conditions if properly cleaned. Periodic cleaning with a solution of 1 ounce of soap in one gallon of water is all that is needed to maintain good window cleanliness and visibility. Caution: DO NOT USE ANY DETERGENTS, WINDOW CLEANERS, SOLVENTS or CHEMICALS OF ANY KIND TO CLEAN VINYL WINDOWS AS THESE WILL CLOUD THE WINDOWS. ALSO, NEVER RUB WINDOWS WITH A DRY CLOTH OR RAG.

Storage Recommendations

Before removing the 3SI UTV Enclosure from your vehicle for storage, clean the Fabric and Vinyl Windows thoroughly as indicated above. Any dirt remaining on the Enclosure may scratch Vinyl Windows while in storage. Once the Enclosure has been cleaned it should be placed on a large flat surface. Lay the Enclosure out so that Vinyl Windows are in a flat position. Fold the doors over the rear panel first then fold the top and windshield on top of the doors keeping the Vinyl Windows flat. Caution: FOLDING VINYL WINDOWS WILL CAUSE PERMANENT CREASE DAMAGE AND WILL VOID ALL WARRANTIES. Once the Enclosure is folded keeping all Vinyl Windows flat, begin rolling the Enclosure into an 8" roll. Place the 8" roll into a box and store at normal room temperature. To ensure long life of your enclosure it is best not to store in extreme temperatures.

Hauling

The ONLY products manufactured by 3SI UTV that can be hauled while installed are the hard windshields, full cab enclosures, and door/rear window combos with top and windshield installed. However, the full cab enclosures and door/rear window combos should be tied down before hauling. Speed should not exceed 55 mph while hauling to prevent ripping and shredding of the material and zippers. NEVER HAUL INSTALLED SOFT TOPS, WINDSHIELD TOP COMBOS, AND SUMMER CABS. REMOVE BEFORE HAULING.