



## Installation Instructions

Thank you for purchasing a UTV enclosure manufactured in the USA with pride by 3SI UTV. Your enclosure is made of heavy duty fabric that is water repellent and resistant to mildew, ultra-violet rays and abrasion. With proper installation and care you can expect many years of service from your 3SI UTV enclosure.

### SOME IMPORTANT NOTES BEFORE GETTING STARTED....

- The enclosure attaches to your UTV's cab frame with Velcro. The technical term for Velcro is hook and loop. Loop is the soft side and hook, the rough side. Loop has been sewn into the enclosure at various points. Adhesive hook has been supplied to attach to your cab frame, corresponding to the sewn-in loop. If you struggle with placement of the adhesive hook, with the enclosure held to the cab frame, note the locations of the sewn-in loop. The adhesive hook is attached to the cab frame at those locations.
- The adhesive hook should be applied at a temperature of 60 degrees or above. **For maximum adhesion, when the adhesive hook is in place, allow the adhesive to cure for 24 hours before attaching the loop to the hook.**
- Clean the surfaces the adhesive hook will be attached to before beginning installation. A light cleaning with mild soap and water is best. A little Windex works great. Do NOT wax or clean with a compound that leaves the frame slick. The adhesive hook will not stick to a slick surface. Again, a light cleaning is best.
- Your enclosure is not a "one size fits all" product. The enclosure was designed and manufactured specifically for your model UTV. As a result, the enclosure should fit square and snug to the cab frame.
- Periodic cleaning of your enclosure with mild soap and water is recommended to minimize accumulations of dirt.
- Clean the vinyl windows with mild soap, water, and a soft cloth to avoid scratches. DO NOT USE ANY DETERGENTS, WINDOW CLEANERS, SOLVENTS OR CHEMICALS TO CLEAN VINYL WINDOWS.
- Clean your enclosure and allow it to dry before removing for storage. **Never fold your enclosure to store.** Roll the enclosure to avoid creasing the vinyl windows. Creases in the vinyl windows cannot be removed. **CREASING THE VINYL WINDOWS VOIDS ALL WARRANTIES AND GUARANTEES.**
- The only enclosures manufactured by 3SI UTV that can be hauled when installed are Lexan windshields, full cab enclosures, and door/rear window combos with top and windshield installed. However, the enclosures should be tied down before hauling. Speed should not exceed 55 mph while hauling to prevent ripping and shredding of the material and zippers. REMOVE ALL OTHER ENCLOSURES BEFORE HAULING.

**PLEASE READ AND FOLLOW THE DETAILED INSTRUCTIONS THAT ARE ATTACHED.**



## **Polaris Ranger Mini/Summer Cab Enclosure Installation**

You have just purchased the best Enclosure for your Utility Terrain Vehicle available on the market today. Your Enclosure is made of Heavy Duty Fabric that is Water Repellent and resistant to Mildew, Ultra-Violet Sun Rays and Abrasion. With proper installation and care you can expect many years of long lasting fit, color and service life from your **3SI UTV Enclosure**.

**Step 1:** Remove your 3SI UTV Enclosure and Velcro kit from the shipping box.

### **Please note....**

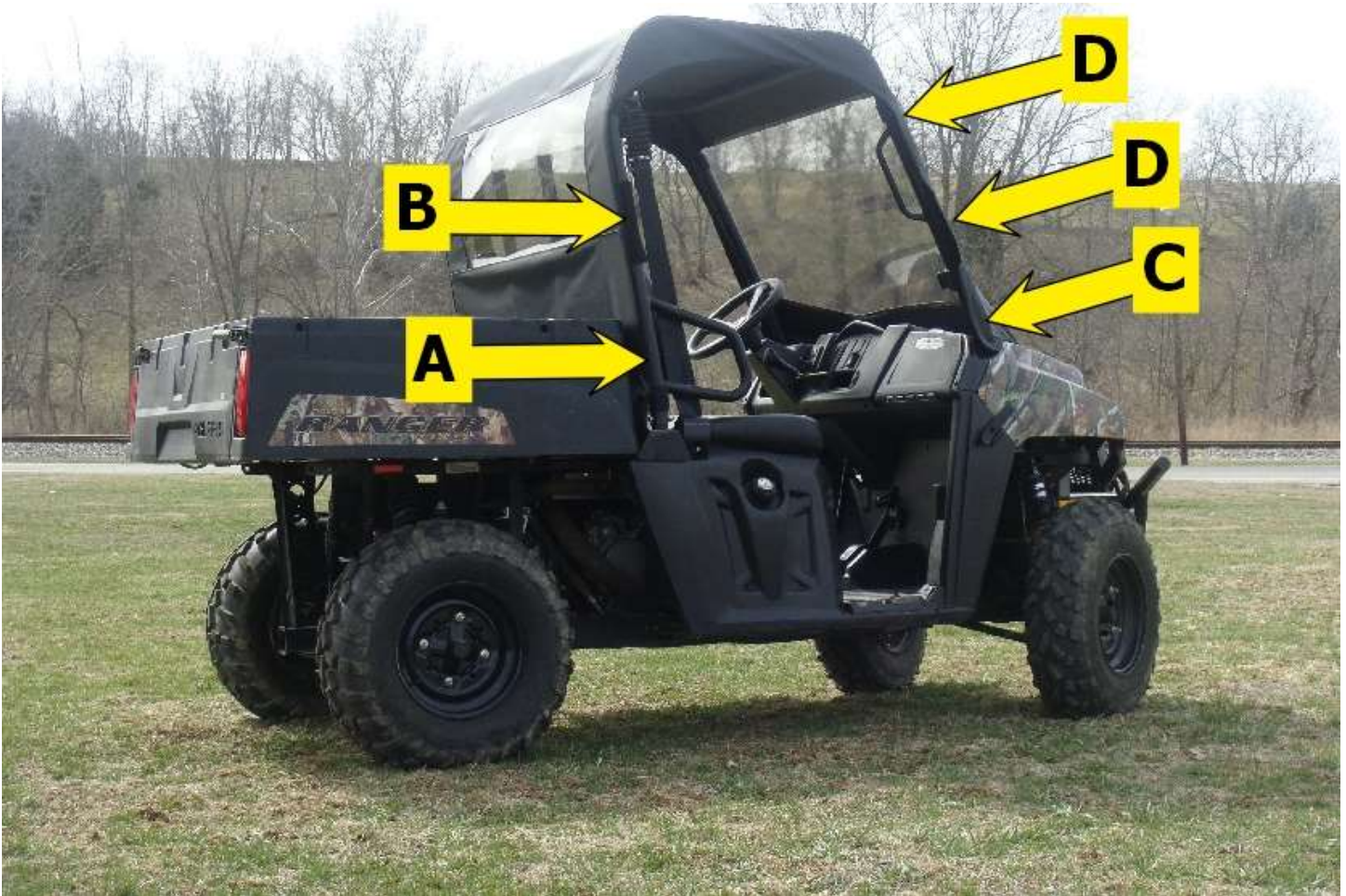
The technical term for Velcro is hook and loop. Loop is the soft side and hook the rough side. Loop has been sewn into the enclosure at various points. Adhesive hook has been supplied to attach to your cab frame, corresponding to the sewn-in loop. If you struggle with placement of the adhesive hook, with the enclosure draped over the cab frame, temporarily attach (without removing the adhesive backing) the adhesive hook to the corresponding sewn in strips. The contents of your adhesive hook kit and placement is as follows:

Reference	Qty/Size	Placement
No ref	1-54"	Bottom of back panel-Horizontal
A	2-6"	Bottom corners of back panel-Horizontal wrapped around roll bars
B	2-8"	Middle of back roll bar uprights-Vertical
C	2-6"	Lower portion of front roll bars-Vertical along outside edge of bars
D	4-8"	Middle and upper area of front roll bars-Vertical along outside edge of bars

**Note:** *before applying adhesive Velcro Strips to your vehicle, surfaces should be free of dust, dirt and oil.*

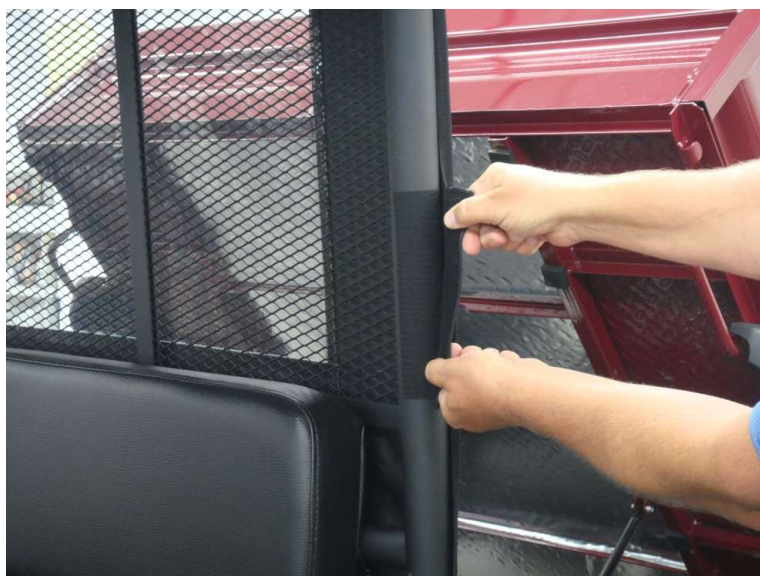
**Step 2:** Place Enclosure on top of the cab frame and align corner seams with outside center of roll bars.

**Step 3:** Starting at the rear of the cab and working forward, one at a time, remove the backing from the adhesive hook strips and attach as indicated above. The following picture shows the approximate placement of the adhesive strips.



**Step 4:** After all adhesive hook strips have been attached, begin attaching the sewn in loop strips to the installed hook strips. Starting in the rear, align and square the enclosure to the cab frame as the hook and loop are joined.

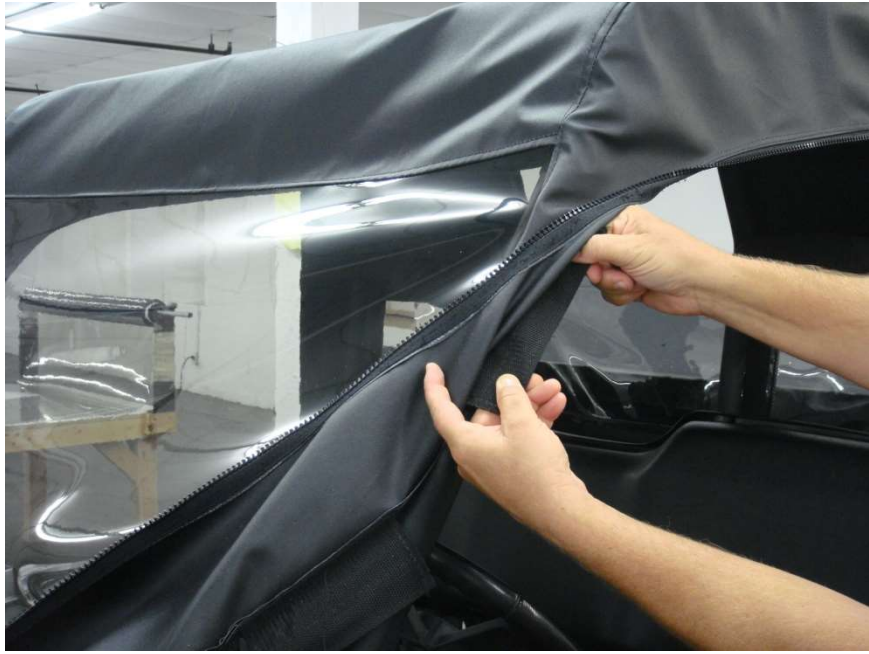
**Step 5:** Pulling upward & outward on the top Rear corners of the Enclosure, attach Rear Roll Bar Post Enclosure tabs to installed 8" Velcro Strips as shown below. This should straighten the back window section of the Enclosure.



**Step 6:** Fasten pre-attached Enclosure Front Hood Straps around the Vehicle front bumper as shown below. Bringing the end of the straps up to the latch buckle, run the end through the back of the top buckle opening first and then through the front of the lower buckle opening as shown. DO NOT FULLY TIGHTEN FRONT HOOD STRAPS AT THIS TIME.

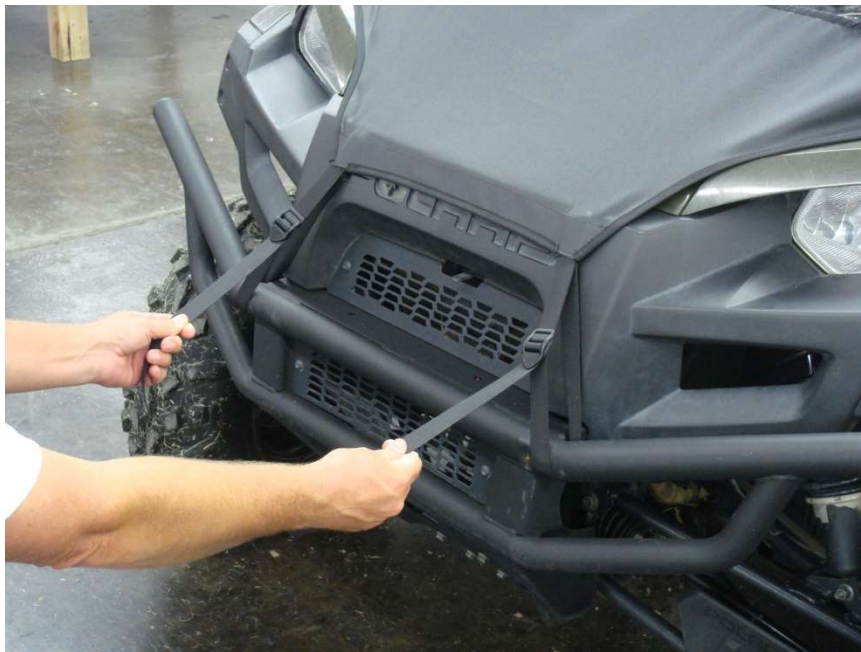


**Step 7:** Starting with the top Front Roll Bar Post Enclosure tabs pull outward and downward attaching tabs to the top 8" inch Velcro Strips as shown below. Repeat this process with the middle 8" and then lower 6" front roll bar enclosure tabs as shown making sure that the windshield is centered between the roll bar posts. Note: this step is best performed with an assistant attaching tabs on both sides of the windshield at the same time.





**Step 8:** Tighten Front Hood Straps by pulling downward from the buckle on both strap ends at the same time as shown below. This should tighten the Front Windshield and remove any major wrinkles.



**Step 9:** Repeat all steps as needed to achieve a snug fit to the cab frame.



**See enclosed Product Care sheet for instructions on how to properly care for your 3SI UTV Enclosure.**



## Care Instructions

### Heavy Duty Marine and Mil-Spec Military Fabric Cleaning

All 3SI UTV Enclosure Heavy Duty Marine and Military Camo fabrics are guaranteed against excessive loss of color or strength under normal exposure and use conditions. Periodic cleaning with a solution of 4 ounces of bleach and 2 ounces of soap (NOT DETERGENTS) in one gallon of water is recommended to minimize accumulations of dirt, bird droppings and other contaminants which can support surface mildew and stain fabric.

### Soft Vinyl Window Cleaning

3SI UTV Enclosure Vinyl Windows will remain clear and provide great visibility under normal exposure conditions if properly cleaned. Periodic cleaning with a solution of 1 ounce of soap in one gallon of water is all that is needed to maintain good window cleanliness and visibility. Caution: DO NOT USE ANY DETERGENTS, WINDOW CLEANERS, SOLVENTS or CHEMICALS OF ANY KIND TO CLEAN VINYL WINDOWS AS THESE WILL CLOUD THE WINDOWS. ALSO, NEVER RUB WINDOWS WITH A DRY CLOTH OR RAG.

### Storage Recommendations

Before removing the 3SI UTV Enclosure from your vehicle for storage, clean the Fabric and Vinyl Windows thoroughly as indicated above. Any dirt remaining on the Enclosure may scratch Vinyl Windows while in storage. Once the Enclosure has been cleaned it should be placed on a large flat surface. Lay the Enclosure out so that Vinyl Windows are in a flat position. Fold the doors over the rear panel first then fold the top and windshield on top of the doors keeping the Vinyl Windows flat. Caution: **FOLDING VINYL WINDOWS WILL CAUSE PERMANENT CREASE DAMAGE AND WILL VOID ALL WARRANTIES.** Once the Enclosure is folded keeping all Vinyl Windows flat, begin rolling the Enclosure into an 8" roll. Place the 8" roll into a box and store at normal room temperature. To ensure long life of your enclosure it is best not to store in extreme temperatures.

### Hauling



The **ONLY** products manufactured by 3SI UTV that can be hauled while installed are the hard windshields, full cab enclosures, and door/rear window combos with top and windshield installed. However, the full cab enclosures and door/rear window combos should be tied down before hauling. Speed should not exceed 55 mph while hauling to prevent ripping and shredding of the material and zippers. **NEVER HAUL INSTALLED SOFT TOPS, WINDSHIELD TOP COMBOS, AND SUMMER CABS. REMOVE BEFORE HAULING.**