



INDUSTRIES

MAHINDRA ROXOR Full Cab

Your enclosure is made of heavy duty fabric that is water repellent and resistant to mildew, ultra-violet rays and abrasion.

Surface Preparation Instructions and Guidelines

Cleaning: To achieve a strong bond between Velcro adhesive and UTV surface, you must clean the surface. Use a mixture of 50% alcohol and 50% water to remove dirt, mud and dust from roll bars and plastic body components. Let dry. Repeat this process 3 times.

The adhesive hook should be applied at a temperature of 70 degrees or above.

Bond between UTV and adhesive hook is dependent upon the amount of adhesive to surface contact development. Firm application pressure develops a better adhesive contact and improves bond strength.

After application, the bond strength increases and approaches the ultimate bond strength after 72 hours. Bond strength build up: 20 min equals 50% bond strength, 1 hour equals 75% bond strength, one day equals 90% bond strength, and 3 days equals 100% bond strength.

More tips for installation.

Two is better than one: We recommend a second person be involved for the installation process. Getting the panel in the correct position takes some pulling and tugging, we find the process runs smoother when there are two people pulling.

Test adhesion: Use a small piece of Velcro, remove backing and adhere to roll bars. Wait 20 minutes, Velcro should already be difficult to remove.

Still having trouble with adhesion: If Velcro is still not adhering to the roll bars, use a piece of hook (rough side of Velcro) to "rough up" the surface of your roll bar. We do not recommend this for the plastic body of your UTV, it will scratch.

Unsure about Velcro placement: With-out removing the white backing, attach the Velcro to your enclosure panel. Hold panel up to the UTV and note the area that the Velcro should attach. You can use the double-sided straps with-out Velcro to help hold up the panel while you remove the white backing and adhere sticky Velcro. We will send extra Velcro that can be used to hold the enclosure to the cab frame for easy notation of Velcro placement.

Attaching panel: Attach the panel top first, then work your way around the panel pulling the tabs and sticking them to the corresponding adhesive Velcro. The webbing (black trim) of the panel should align to the middle of the roll bar.

Installing with Windshield and Hard Top.

If you have a windshield and or hard top on your UTV, you will need to remove them before installing the door panels. After the installation of your enclosure is complete you will then reinstall the windshield and hard top.

If clamps for the windshield or hard top are interfering with the sewn-on Velcro tabs or straps on your enclosure you can modify the tabs and straps easily by cutting them to fit. Mark where the tabs need to be cut to accommodate your windshield or hard tops clamps or bolts. Cut the tabs and burn the edges with a lighter to prevent unraveling. Do not cut into the binding (darker black trim around your door panel).

Installation Instructions

Step 1: Remove your 3SI UTV Cab Enclosure and Velcro kit from the shipping box.

Step 2: Remove existing windshield and hard top.

Step 3: Clean all surfaces on which you will be placing the adhesive Velcro according to the surface preparation instructions. Wait until the surfaces are dry.

Step 4: Remove the backing from the adhesive hook strips and install as indicated in the following adhesive hook table and pictures. Press firmly.

Step 5: Wait 72 hours! This step is very important to the life of your Velcro. Waiting the full 72 hours will ensure that your Velcro and enclosure will stay on in rain, sleet, snow or mud.

Step 6: After all adhesive Velcro strips are attached, begin attaching each panel to the cab frame.

Step 7: After all panels are attached work your way around the UTV remove, pull, and reattach each Velcro tab to achieve a tight fit. You may need to do this a few times.

Step 8: When your enclosure is in the correct position the binding or trim around the panels will rest in the center of the roll bar. If you have a windshield the binding, will rest along the edge of your windshield.

Step 9: Re-install your windshield and hard top.

See enclosed Product Care sheet for instructions on how to properly care for your 3SI UTV Enclosure.

1: CLEAN!

Clean all areas, on which adhesive Velcro will be placed, with alcohol. Let dry. Then clean it again and let dry. Then clean it again and let dry. This is so important and will extend the life of your Velcro.



2: HEAT!

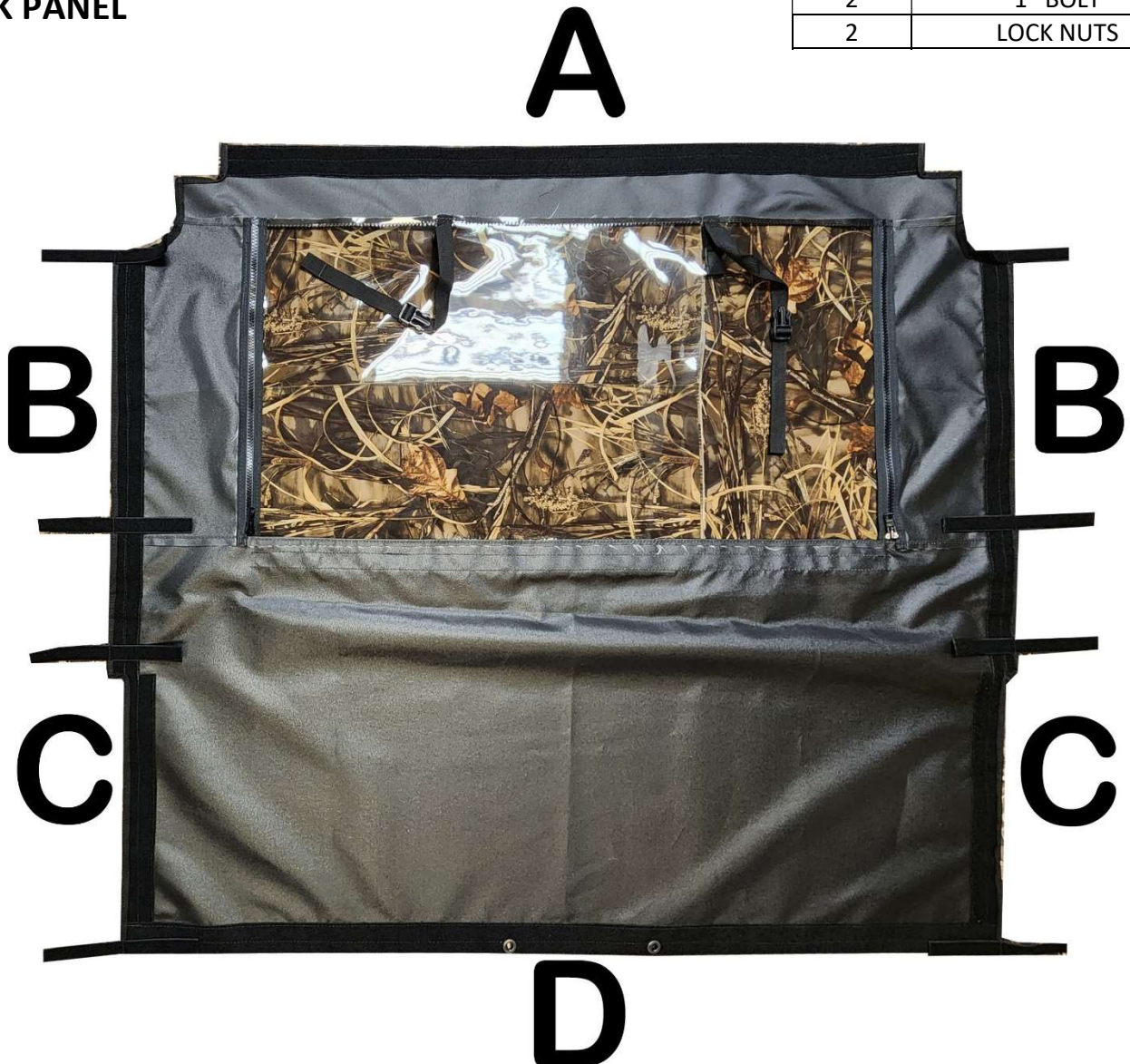
The adhesive backing on your Velcro will harden in cold temperatures. If the adhesive is not sticky when you remove the backing you will need to heat the Velcro with a hair dryer or place it over a heating vent inside your house. And I have to say it: **DO NOT MICROWAVE OR PLACE IN OVEN!**

3: INSTALL VELCRO

Begin installing Velcro in various positions on your UTV.

HARDWARE KIT	
2	BRACKETS
2	LARGE WASHERS
2	SMALL WASHERS
2	1" BOLT
2	LOCK NUTS

BACK PANEL

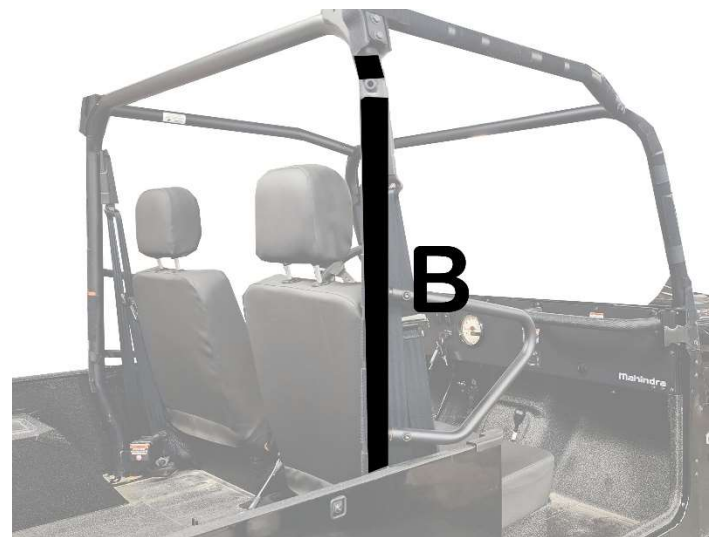
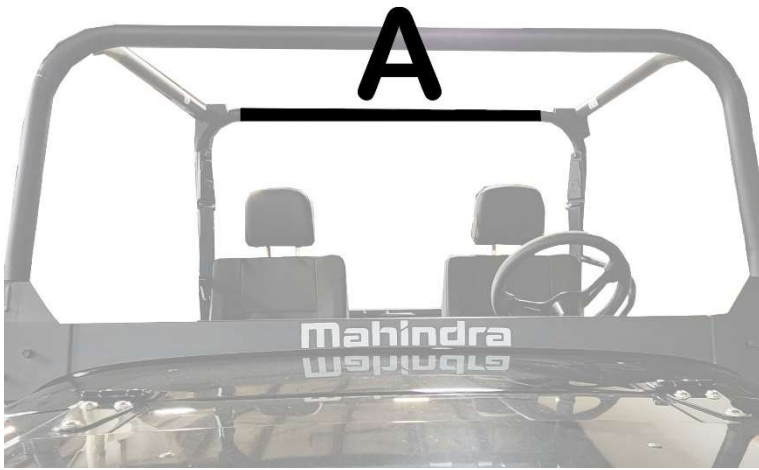


REFERENCE	QTY/SIZE	PLACEMENT
A	1-45"	ON THE INSIDE OF THE TOP SIDE ROLLBAR.
B	2-27"	ON THE OUTSIDE OF THE REAR ROLL BAR.
C	2-17"	ON THE OUTSIDE OF THE REAR ROLL BAR
D	1-56"	ON THE FLOOR BEHIND THE SEATS THIS IS OPTIONL

4: INSTALL BACK PANEL FIRST

ATTACH BACK PANEL TO THE FRAME.

CUT STRIPS OF VELCRO INTO SMALLER PIECES FOR A BETTER LONGER LASTING FIT.

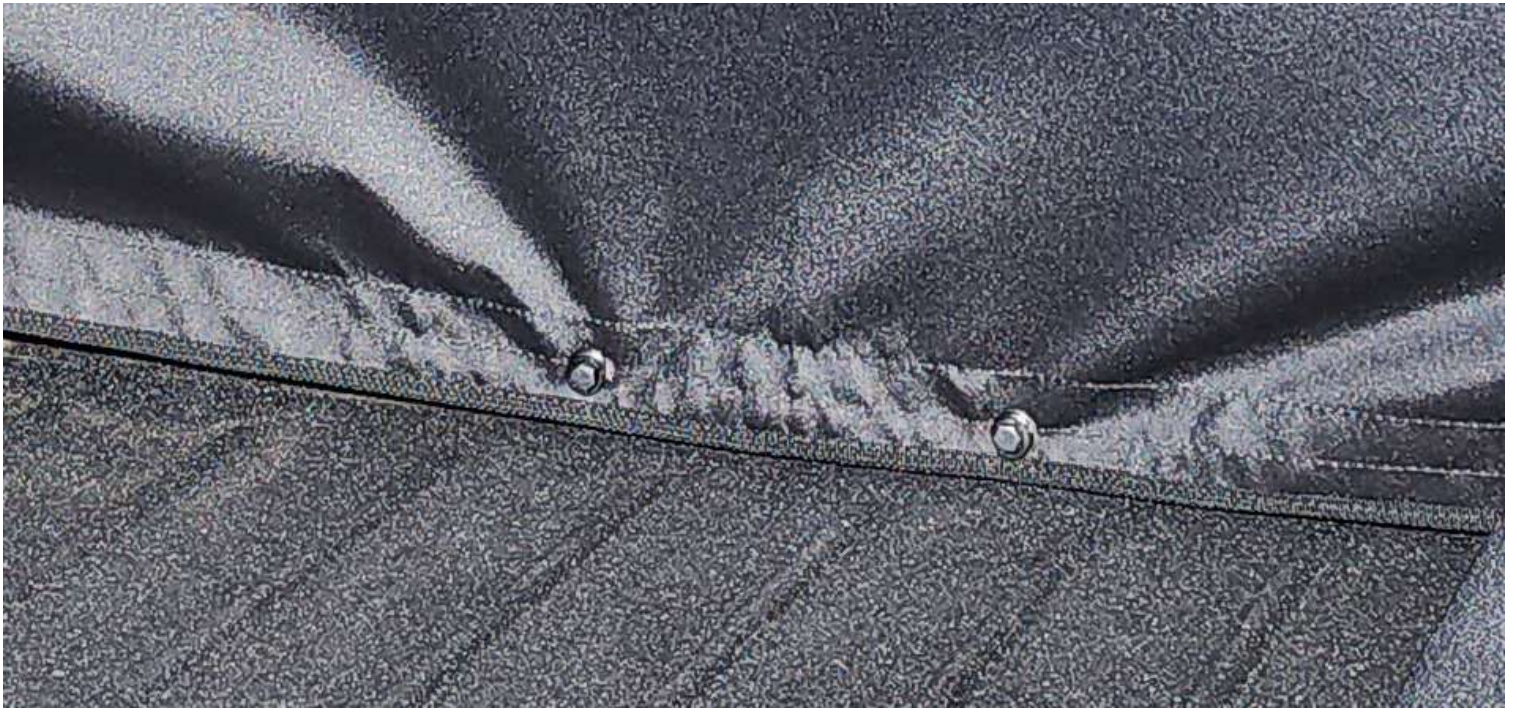


LOOSEN UP SEAT BELT BOLTS, SLIDE THE PRONGED END OF THE BRACKET UNDER THE SET BELT BOLT, TIGHTEN THE BOLTS BACK DOWN. USE PROVIDED HARDWARE TO CONNECT THE GROMMETS ON THE BACK PANEL TO THE BRACKET. TIGHTEN LOCK NUTS.



Large washer is installed on the inside.





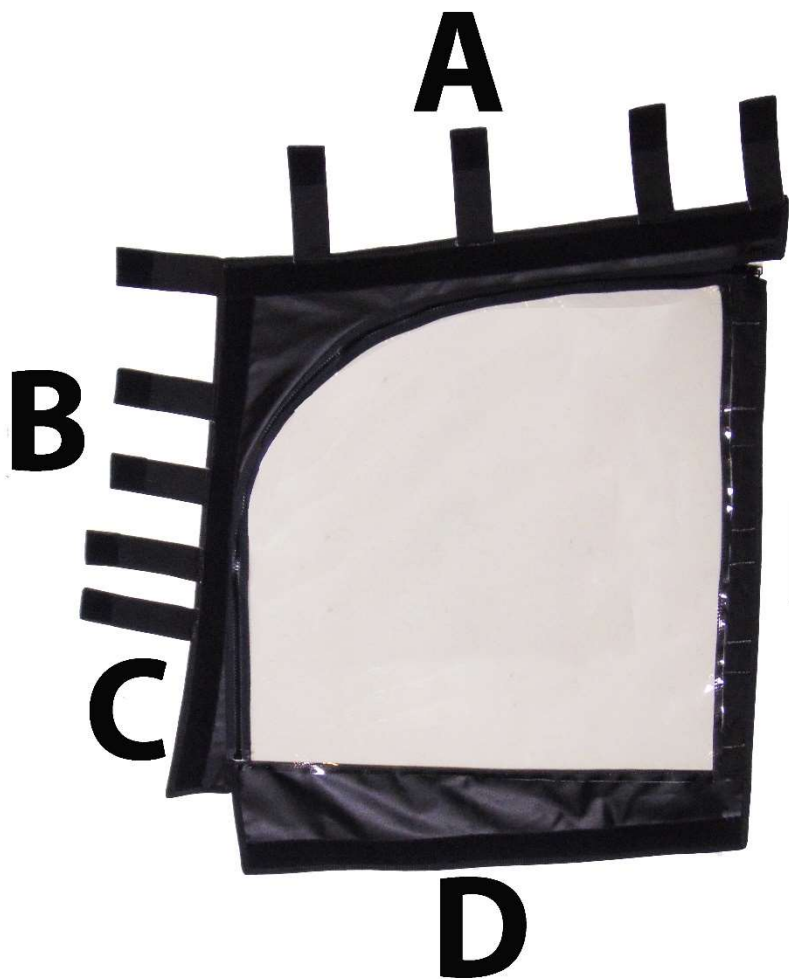
Small washer is installed on the outside.



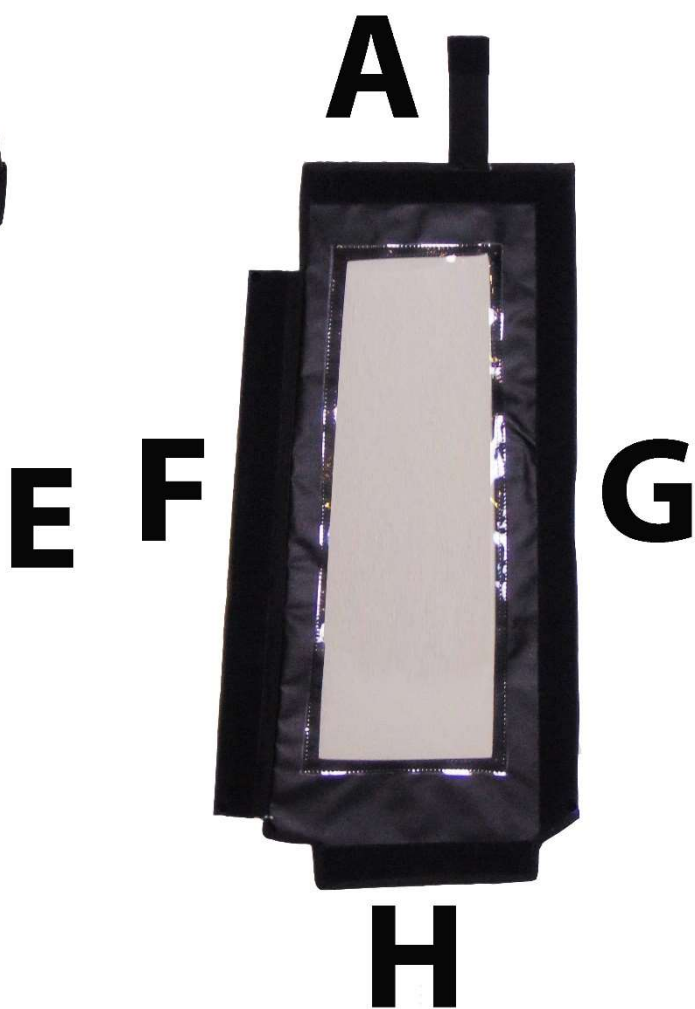
WRAP THESE STRAPS AROUND THE ROLL BAR FOR EXTRA HOLD.

MAHINDRA ROXOR HALF DOOR KIT

Pictures show the sewn on Velcro tabs and straps that correspond to the Velcro chart.



2 FRONT DOOR PANELS



2 BACK DOOR PANELS



2 SIDE BARS



2 NUTS



2 – 1-3/4" LOOP CLAMPS



2 – 1" CARRIAGE BOLTS



4 WASHERS

ATTACH SIDE BAR FIRST



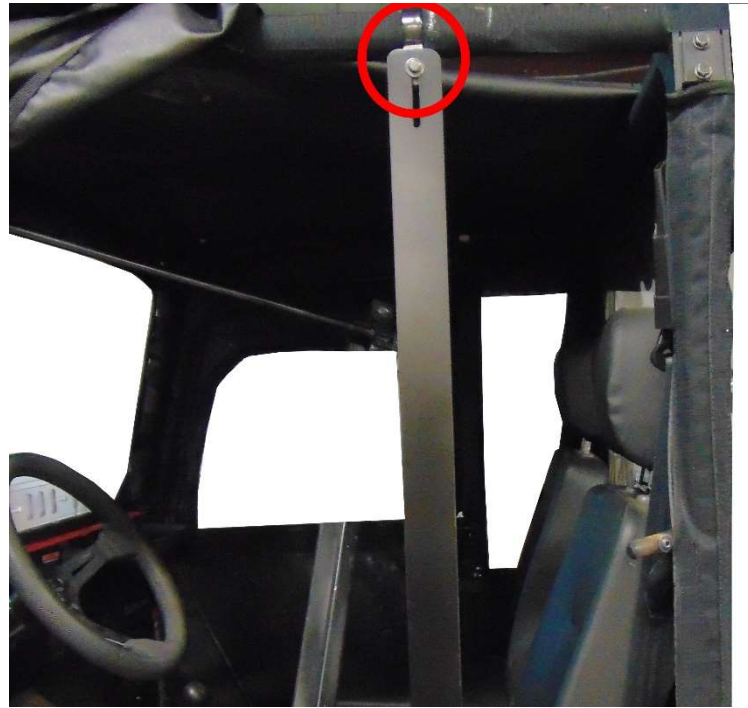
STEP ONE: Remove factory bolt from seat handle bar.



STEP TWO: Set side bar on the UTV with the lower fork to the inside of the cab. Between the UTV body and the seat bar.



STEP THREE: Line up the fork so that the factory bolt will be replaced in between the tines. Replace factory bolt.



STEP FOUR: Attach loop clamp to top roll bar flat side facing out, insert bolt in washer through the slot in the side bar and through the holes in the loop clamp. Use a washer and nut to hold loop clamp in place. Tighten all hardware.

ADHESIVE HOOK TABLE

Door Kit

Reference	Quantity/Size	Placement/Usage
A	2-36"	Attach horizontally to the outside edge of the top side roll bars. A strip of Velcro has been sewn on to the door for this adhesive strip. Line the trim on the door kit up with the top of the machine and attach sewn on strip to adhesive strip. When the door kit is lined up straight you will then wrap the straps around the top of the roll bar and attach to the same adhesive Velcro strip. (Figure 1)
B	2-21"	Attach vertically to front side roll bars facing the outside of the UTV. A strip of Velcro has been sewn on to the door for this adhesive strip. Line the trim on the door kit up with the forward edge of the roll bar and attach sewn on strip to adhesive strip. When the door kit is lined up straight you will then wrap the straps around the top of the roll bar and attach to the same adhesive Velcro strip. (Figure 2)
C	2-8"	Attach vertically to the lower metal on the front roll bars. (Figure 3)
D	2-32"	Attach horizontally to the top of the half door. (Figure 4)
E	N/A	Magnets are sewn in to the back of your front door panel. The magnets will attach to the metal bar you have already installed on the UTV.
F	2-27"	Attach to the side bar facing the interior of the cab. (Figure 5)
G	2-27"	Attach vertically to the back roll bars. (Figure 6)
H	2-11"	Attach to the outside body of the UTV, below side bar. (Figure 7)



Figure 1: Shows placement of 36" Velcro strips A.

Figure 2: Shows placement of 21" Velcro strips B.



Figure 3: Shows placement of 8" Velcro strips C.



Figure 4: Shows placement of 32" Velcro strips D.



Figure 5: Photo shows placement of Velcro strips F.



Figure 6: Shows position of Velcro strips G.



Figure 7: Shows position of 11" Velcro strips H.



Figure 8: When installation is complete your door should resemble the door in the photo.



Mahindra Roxor

TOP CAP



PICTURE SHOWS THE TENSION STRAPS ATTACHED TO YOUR TOP CAP. PULL THE TENSION STRAPS TO ADJUST THE POSITION OF YOUR TOP CAP.

THE DOUBLE-SIDED STRAP IS CIRCLED YOU WILL CONNECT THIS STRAP TO THE VELCRO YOU INSTALL ON YOUR MACHINE



ADHESIVE HOOK TABLE

REFERENCE	QUANTITY/SIZE	PLACEMENT
A	4-6"	WRAP STRIP AROUND THE BAR, DO NOT OVERLAP VELCRO. (FIGURE 1)
B	2-8"	YOU WILL NOT NEED THIS STRIP FOR A FULL CAB.
C	1-55"	PLACE THIS STRIP ON YOUR LEXAN WINDSHIELD FOR EXTRA HOLD.



Figure 1: WRAP THESE VELCRO STRIPS AROUND THE ROLL BAR AND ATTACH DOUBLE-SIDED STRAP.

IF YOU HAVE A WINDSHIELD YOU WILL ATTACH THE DOUBLE-SIDED STRAPS FIRST. REINSTALL THE WINDSHIELD AND THEN ATTACH YOUR TOP CAP. THE TOP CAP WILL FIT DOWN OVER THE WINDSHIELD WITH THE TENSION STRAPS RESTING ALONG THE ROLL BAR OR ON THE WINDSHEILD ITSELF. PICTURED BELOW.







Care Instructions

Heavy Duty Marine and Mil-Spec Military Fabric Cleaning

All 3SI UTV Enclosure Heavy Duty Marine and Military Camo fabrics are guaranteed against excessive loss of color or strength under normal exposure and use conditions. Periodic cleaning with a solution of 4 ounces of bleach and 2 ounces of soap (NOT DETERGENTS) in one gallon of water is recommended to minimize accumulations of dirt, bird droppings and other contaminants which can support surface mildew and stain fabric.

Soft Vinyl Window Cleaning

3SI UTV Enclosure Vinyl Windows will remain clear and provide great visibility under normal exposure conditions if properly cleaned. Periodic cleaning with a solution of 1 ounce of soap in one gallon of water is all that is needed to maintain good window cleanliness and visibility. Caution: DO NOT USE ANY DETERGENTS, WINDOW CLEANERS, SOLVENTS or CHEMICALS OF ANY KIND TO CLEAN VINYL WINDOWS AS THESE WILL CLOUD THE WINDOWS. ALSO, NEVER RUB WINDOWS WITH A DRY CLOTH OR RAG.

Storage Recommendations

Before removing the 3SI UTV Enclosure from your vehicle for storage, clean the Fabric and Vinyl Windows thoroughly as indicated above. Any dirt remaining on the Enclosure may scratch Vinyl Windows while in storage. Once the Enclosure has been cleaned it should be placed on a large flat surface. Lay the Enclosure out so that Vinyl Windows are in a flat position. Fold the doors over the rear panel first then fold the top and windshield on top of the doors keeping the Vinyl Windows flat. Caution: **FOLDING VINYL WINDOWS WILL CAUSE PERMANENT CREASE DAMAGE AND WILL VOID ALL WARRANTIES.** Once the Enclosure is folded keeping all Vinyl Windows flat, begin rolling the Enclosure into an 8" roll. Place the 8" roll into a box and store at normal room temperature. To ensure long life of your enclosure it is best not to store in extreme temperatures.

Hauling

The ONLY products manufactured by 3SI UTV that can be hauled while installed are the hard windshields, full cab enclosures, and door/rear window combos with top and windshield installed. **However, the full cab enclosures and door/rear window combos should be tied down before hauling.** Speed should not exceed 55 mph while hauling to prevent ripping and shredding of the material and zippers. NEVER HAUL INSTALLED SOFT TOPS, WINDSHIELD TOP COMBOS, AND SUMMER CABS. **REMOVE BEFORE HAULING.**