



Installation Instructions

Thank you for purchasing a UTV enclosure manufactured in the USA with pride by 3SI UTV. Your enclosure is made of heavy duty fabric that is water repellent and resistant to mildew, ultra-violet rays and abrasion. With proper installation and care you can expect many years of service from your 3SI UTV enclosure.

SOME IMPORTANT NOTES BEFORE GETTING STARTED....

- The enclosure attaches to your UTV's cab frame with Velcro. The technical term for Velcro is hook and loop. Loop is the soft side and hook, the rough side. Loop has been sewn into the enclosure at various points. Adhesive hook has been supplied to attach to your cab frame, corresponding to the sewn-in loop. If you struggle with placement of the adhesive hook, with the enclosure held to the cab frame, note the locations of the sewn-in loop. The adhesive hook is attached to the cab frame at those locations.
- The adhesive hook should be applied at a temperature of 60 degrees or above. **For maximum adhesion, when the adhesive hook is in place, allow the adhesive to cure for 24 hours before attaching the loop to the hook.**
- Clean the surfaces the adhesive hook will be attached to before beginning installation. A light cleaning with mild soap and water is best. A little Windex works great. Do NOT wax or clean with a compound that leaves the frame slick. The adhesive hook will not stick to a slick surface. Again, a light cleaning is best.
- Your enclosure is not a "one size fits all" product. The enclosure was designed and manufactured specifically for your model UTV. As a result, the enclosure should fit square and snug to the cab frame.
- Periodic cleaning of your enclosure with mild soap and water is recommended to minimize accumulations of dirt.
- Clean the vinyl windows with mild soap, water, and a soft cloth to avoid scratches. DO NOT USE ANY DETERGENTS, WINDOW CLEANERS, SOLVENTS OR CHEMICALS TO CLEAN VINYL WINDOWS.
- Clean your enclosure and allow it to dry before removing for storage. **Never fold your enclosure to store.** Roll the enclosure to avoid creasing the vinyl windows. Creases in the vinyl windows cannot be removed. **CREASING THE VINYL WINDOWS VOIDS ALL WARRANTIES AND GUARANTEES.**
- The only enclosures manufactured by 3SI UTV that can be hauled when installed are Lexan windshields, full cab enclosures, and door/rear window combos with top and windshield installed. However, the enclosures should be tied down before hauling. Speed should not exceed 55 mph while hauling to prevent ripping and shredding of the material and zippers. REMOVE ALL OTHER ENCLOSURES BEFORE HAULING.

PLEASE READ AND FOLLOW THE DETAILED INSTRUCTIONS THAT ARE ATTACHED.



Kawasaki 4010 Trans Full Cab Enclosure for Hard Windshield Installation

You have just purchased the best Enclosure for your Utility Terrain Vehicle available on the market today. Your Enclosure is made of Heavy Duty Fabric that is Water Repellent and resistant to Mildew, Ultra-Violet Sun Rays and Abrasion. With proper installation and care you can expect many years of long lasting fit, color and service life from your **3SI UTV INDUSTRIES Cab Enclosure and Polycarbonate Windshield**

Step 1: Remove your 3SI UTV INDUSTRIES Cab Enclosure, Adhesive Velcro Kit from the shipping box.

FOR BEST RESULTS, ADHESIVE VELCRO STRIPS SHOULD BE APPLIED AT TEMPS ABOVE 60 DEGREES F. PLEASE ALLOW THE CAB FRAME TO WARM BEFORE APPLYING ADHESIVE VELCRO.

Contents: 1 – Kawasaki 4010 Trans Full Cab Enclosure for hard windshield

1 – 46" Velcro Strips - Rear cab Frame

12 – 6" Velcro Strips – Center and Rear Roll Bar post Uprights placed horizontally around Roll Bar Posts

2 - 13" Velcro Strips – split at curve Dash Cowl / Fender Well

2 – 10" (1"wide) Velcro Strips - cargo Bed @ Rear Door)

1 – 54" Velcro Strip – Top Front Windshield placed horizontally

2 – 39" Velcro Strips – Windshield Roll Bar Post uprights (cut to accommodate clamps)

2 – 28" Velcro Strips – Front Cab Rocker Panel

2 – 25" Velcro Strips – Rear Cab Rocker Panel

Note: before applying adhesive Velcro Strips to your vehicle, surfaces should be free of dust, dirt and oil. Clean vehicle surfaces with water or Windex only. Do not use solvents to prepare your vehicle surfaces for Velcro application.

BEFORE INSTALLING YOUR ENCLOSURE, INSTALL YOUR WINDSHIELD TO DETERMINE THE LOCATION OF THE WINDSHIELD CLAMPS. THE ADHESIVE VELCRO AND WEBBING ALONG THE FRONT ROLL BARS MUST BE CUT TO ACCOMMODATE THE WINDSHIELD CLAMPS.

Step 2: Remove the clear plastic backing from the 46" Velcro strip and adhere to the top raised panel below the Rear Cab Window as shown in figure 2.1



Figure 2.1 - install 46" Velcro Strip on Top Raised Panel below rear window

Step 3: Remove the clear plastic backing from the 39" Velcro strips and adhere along the front of the Windshield Roll Bar Post uprights. **Cut the Velcro strips as needed to fit between the windshield clamps.**

Step 4: Remove the clear plastic backing from the 6" Velcro strips and install horizontally around the Center and Rear Roll Bar Uprights as shown in figures 4.1, 4.2, 4.3, 4.4 and 4.5. Note: Velcro strips should go around the Roll Bar posts with the seam facing toward the inside of the Cab.



Figure 4.1 – install 6" Velcro Strip horizontally around the bottom of the Center Roll Bar upright



Figure 4.2 – install 6" Velcro Strip horizontally around the Center Roll Bar upright approx 24" below the cross-member weld joint



Figure 4.3 – install two 6" Velcro strips horizontally around the Center Roll Bar upright one @ 4" & one @ 9" below the cross-member weld



Figure 4.4 – install two 6" Velcro strips horizontally at the top and bottom of the rear Roll Bar upright exhaust port



Figure 4.5 – install 6" Velcro Strip horizontally around the bottom of the Rear Roll Bar upright

Step 5: Remove the clear plastic backing from the 13" Velcro strips and adhere to the side of the Dash Cowl / Fender well as shown in figure 5.1. Note: you will need to split the 13" Velcro strip so that one side is 8" and the other side 5". This will allow you to follow the curve in the fender well. Also adhere the front and rear Rocker Panel 28" and 25" Velcro strips horizontally along the Rocker Panel as shown in figure 5.2.



Figure 5.1 - Install the 13" Velcro Strips on the Dash Cowl / Fender Well – you will need to split the Velcro strip 8" X 5" before installing

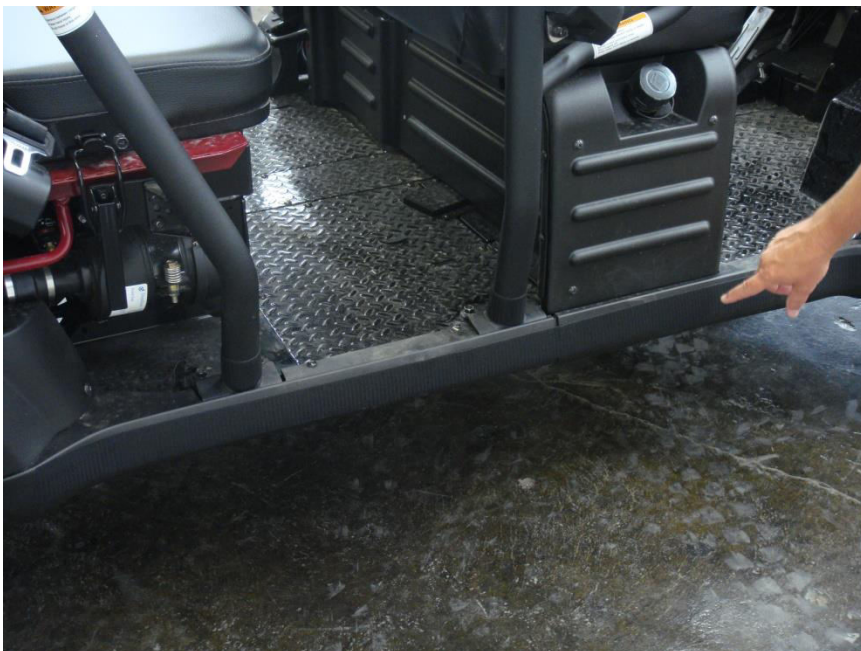


Figure 5.2 – install front Rocker Panel 28" and rear Rocker panel 25" Velcro strips

Step 6: Remove the clear plastic backing from the 10" (1" wide) Velcro strips and adhere vertically to the Cargo Bed at the Rear Door area as shown in figure 6.1



Figure 6.1 – install 10” (1” wide) Velcro Strips vertically to the Cargo Bed

Step 7: Place the top of the enclosure on the Roll Bar Cab Frame and Zip the Door Panels and Rear Window Panel to it as shown in Figure 7.1 and 7.2. With the Full Cab Enclosure on top of the Roll Bar Cab Frame as shown in figure 7.3 adjust the enclosure so that seams are located near the center of the Roll Bars. The vehicle bed will need to be raised for this installation step.



Figure 7.1 - Attach Door Panels by zipping them to the Top / Front Windshield panels



Figure 7.2A - attach Rear Window Panel by zipping it to the Top and Door Panels. Note Rear Roll Bar Exhaust port must be exposed



Figure 7.2B – attach Rear Window Panel by zipping it to the Top and Door Panels. Note Rear Roll Bar Exhaust port must be exposed



Figure 7.3 - align enclosure with all panels attached on the Roll Cab Frame so corner Enclosure seams are located near the center of the roll bars

Step 8: Begin attaching Enclosure by first squaring the back of the Enclosure to the Rear of the Cab frame and attaching the Rear Cab Window bottom Velcro tab to the installed 46" Velcro strip as shown in figure 8.1.



Figure 8.1 - square rear of enclosure to cab and attach rear enclosure Velcro tab to installed 46" Velcro strip

Step 9: Pulling upward & outward on the 6" Rear Roll Bar Post Enclosure Velcro Tabs, attach Rear Roll Bar upright Post Enclosure tabs to installed 6" Velcro Strips by wrapping the tabs around the Roll Bar and the installed Velcro strips as shown in figure 9.1 and 9.2



Figure 9.1 - attach 6" Rear Roll Bar post enclosure Velcro tabs to installed Velcro strips above and below the Roll bar exhaust port



Figure 9.2 - attach 6" Rear Roll Bar Post enclosure Velcro tabs to the installed Velcro strips at the bottom of the Rear Roll Bar post upright

Step 10: Attach Center Roll Bar upright Post Enclosure tabs to installed 6" Velcro Strips by wrapping the taps around the Roll Bar and the installed Velcro strips as shown in figure 10.1 and 10.2



Figure 10.1 - attach Center Roll Bar upright enclosure tabs to installed 6" Velcro strips at the center and top of the Roll Bar Upright



Figure 10.2 - attach Center Roll Bar upright enclosure bottom tabs to installed 6" Velcro strips

Step 11: Attach the Windshield Roll Bar Post Enclosure tabs to the installed 39" Velcro Strips as shown in figure 11.1. Your hard windshield will be placed over these tabs. You will need to cut out 2" sections of the tab using household scissors being careful not to cut the binding and searing frayed fabric ends as shown in figure 11.2, 11.3 and 11.4.



Figure 11.1 – attach Windshield Roll Bar post Velcro Tabs to installed 39” Velcro Strips

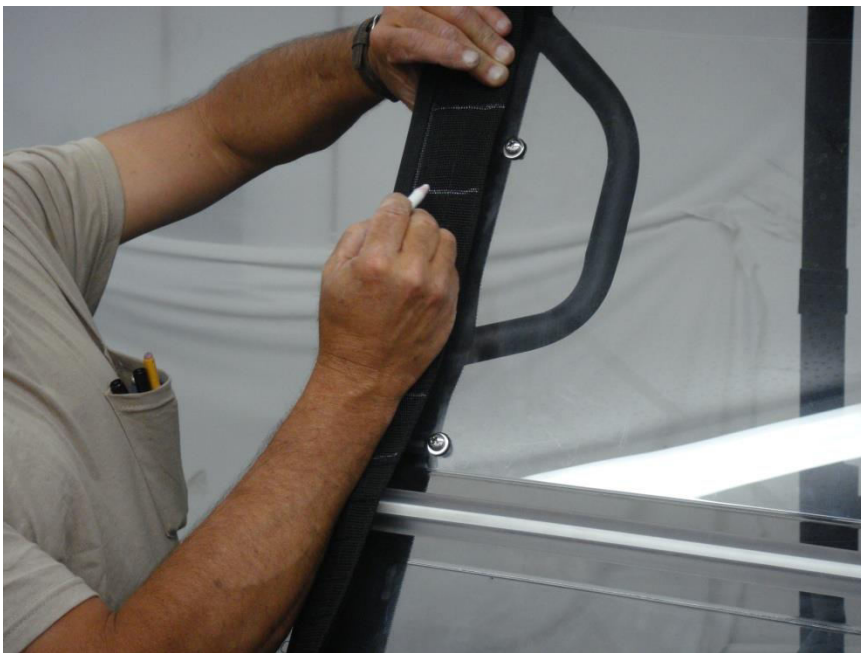


Figure 11.2 - Mark windshield tabs where hard windshield clamps are located along the windshield Roll Bar



Figure 11.3 – Cut the Tab being very careful not to cut the binding at the edge



Figure 11.4 – Seal Frayed Tab thread at the cut area using a lighter

Step 12: Zip Doors closed and attach Dash Cowl side tabs to respective Velcro Strips as shown in figure 12.1 through figure 12.5.



Figure 12.1 - Zip Side Door panels closed



Figure 12.2 - attach Dash Cowl / Fender Well Side Velcro Tabs to installed Velcro strips



Figure 12.3 – attach front Rocker Panel Velcro tabs

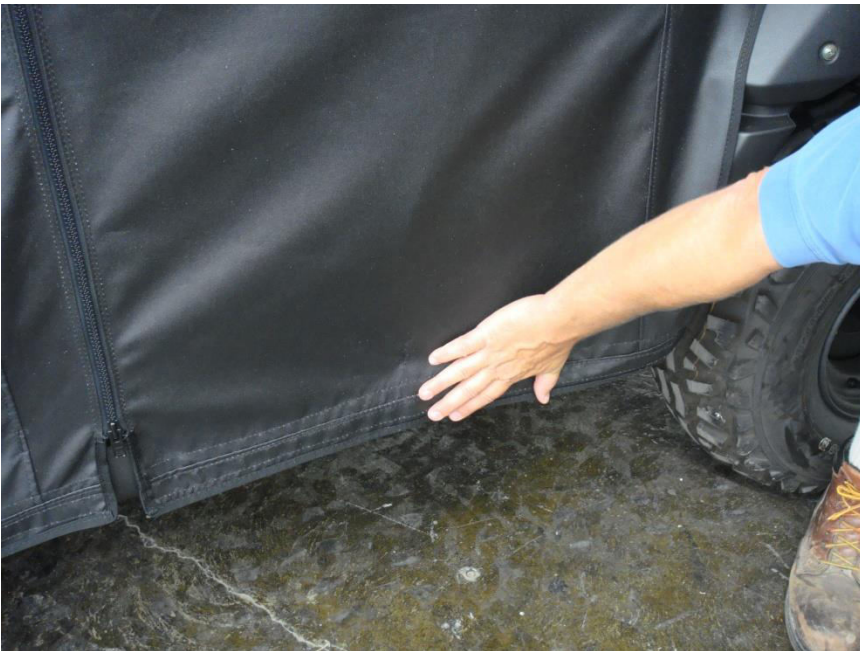


Figure 12.4 – attach rear Rocker Panel Velcro Tabs



Figure 12.5 – attach 10” Velcro tabs to cargo bed

Step 13: Repeat Steps 9, 10, 11 and 12 until the Enclosure fits snug to the Vehicle Roll Bar structure and windows are tight as shown in figure 13.1.



Figure 13.1 - follow steps 9 through 12 tightening Velcro and straps until enclosure is fully tightened to the Cab structure

Step 14: Re-install your windshield.

Step 15: OPTIONAL-Remove the backing and install the 54” Velcro strip along the top/front of the windshield to match the sewn-in Velcro in the visor.

See enclosed Product Care sheet for instructions on how to properly care for your 3SI UTV Enclosure.



Care Instructions

Heavy Duty Marine and Mil-Spec Military Fabric Cleaning

All 3SI UTV Enclosure Heavy Duty Marine and Military Camo fabrics are guaranteed against excessive loss of color or strength under normal exposure and use conditions. Periodic cleaning with a solution of 4 ounces of bleach and 2 ounces of soap (NOT DETERGENTS) in one gallon of water is recommended to minimize accumulations of dirt, bird droppings and other contaminants which can support surface mildew and stain fabric.

Soft Vinyl Window Cleaning

3SI UTV Enclosure Vinyl Windows will remain clear and provide great visibility under normal exposure conditions if properly cleaned. Periodic cleaning with a solution of 1 ounce of soap in one gallon of water is all that is needed to maintain good window cleanliness and visibility. Caution: DO NOT USE ANY DETERGENTS, WINDOW CLEANERS, SOLVENTS or CHEMICALS OF ANY KIND TO CLEAN VINYL WINDOWS AS THESE WILL CLOUD THE WINDOWS. ALSO, NEVER RUB WINDOWS WITH A DRY CLOTH OR RAG.

Storage Recommendations

Before removing the 3SI UTV Enclosure from your vehicle for storage, clean the Fabric and Vinyl Windows thoroughly as indicated above. Any dirt remaining on the Enclosure may scratch Vinyl Windows while in storage. Once the Enclosure has been cleaned it should be placed on a large flat surface. Lay the Enclosure out so that Vinyl Windows are in a flat position. Fold the doors over the rear panel first then fold the top and windshield on top of the doors keeping the Vinyl Windows flat. Caution: **FOLDING VINYL WINDOWS WILL CAUSE PERMANENT CREASE DAMAGE AND WILL VOID ALL WARRANTIES.** Once the Enclosure is folded keeping all Vinyl Windows flat, begin rolling the Enclosure into an 8" roll. Place the 8" roll into a box and store at normal room temperature. To ensure long life of your enclosure it is best not to store in extreme temperatures.

Hauling

The ONLY products manufactured by 3SI UTV that can be hauled while installed are the hard windshields, full cab enclosures, and door/rear window combos with top and windshield installed. However, the full cab enclosures and door/rear window combos should be tied down before hauling. Speed should not exceed 55 mph while hauling to prevent ripping and shredding of the material and zippers. NEVER HAUL INSTALLED SOFT TOPS, WINDSHIELD TOP COMBOS, AND SUMMER CABS. REMOVE BEFORE HAULING.