



## Installation Instructions

Thank you for purchasing a UTV enclosure manufactured in the USA with pride by 3SI UTV. Your enclosure is made of heavy duty fabric that is water repellent and resistant to mildew, ultra-violet rays and abrasion. With proper installation and care you can expect many years of service from your 3SI UTV enclosure.

### SOME IMPORTANT NOTES BEFORE GETTING STARTED....

- The enclosure attaches to your UTV's cab frame with Velcro. The technical term for Velcro is hook and loop. Loop is the soft side and hook, the rough side. Loop has been sewn into the enclosure at various points. Adhesive hook has been supplied to attach to your cab frame, corresponding to the sewn-in loop. If you struggle with placement of the adhesive hook, with the enclosure held to the cab frame, note the locations of the sewn-in loop. The adhesive hook is attached to the cab frame at those locations.
- The adhesive hook should be applied at a temperature of 60 degrees or above. **For maximum adhesion, when the adhesive hook is in place, allow the adhesive to cure for 24 hours before attaching the loop to the hook.**
- Clean the surfaces the adhesive hook will be attached to before beginning installation. A light cleaning with mild soap and water is best. A little Windex works great. Do NOT wax or clean with a compound that leaves the frame slick. The adhesive hook will not stick to a slick surface. Again, a light cleaning is best.
- Your enclosure is not a "one size fits all" product. The enclosure was designed and manufactured specifically for your model UTV. As a result, the enclosure should fit square and snug to the cab frame.
- Periodic cleaning of your enclosure with mild soap and water is recommended to minimize accumulations of dirt.
- Clean the vinyl windows with mild soap, water, and a soft cloth to avoid scratches. DO NOT USE ANY DETERGENTS, WINDOW CLEANERS, SOLVENTS OR CHEMICALS TO CLEAN VINYL WINDOWS.
- Clean your enclosure and allow it to dry before removing for storage. **Never fold your enclosure to store.** Roll the enclosure to avoid creasing the vinyl windows. Creases in the vinyl windows cannot be removed. **CREASING THE VINYL WINDOWS VOIDS ALL WARRANTIES AND GUARANTEES.**
- The only enclosures manufactured by 3SI UTV that can be hauled when installed are Lexan windshields, full cab enclosures, and door/rear window combos with top and windshield installed. However, the enclosures should be tied down before hauling. Speed should not exceed 55 mph while hauling to prevent ripping and shredding of the material and zippers. REMOVE ALL OTHER ENCLOSURES BEFORE HAULING.

**PLEASE READ AND FOLLOW THE DETAILED INSTRUCTIONS THAT ARE ATTACHED.**



## Kawasaki 4010 Trans Full Door / Rear Window Installation Instructions

You have just purchased the best Enclosure for your Utility Terrain Vehicle available on the market today. Your Enclosure is made of Heavy Duty Fabric that is Water Repellent and resistant to Mildew, Ultra-Violet Sun Rays and Abrasion. With proper installation and care you can expect many years of long lasting fit, color and service life from your **3SI UTV Cab Enclosure**.

**Step 1:** Remove your 3SI UTV door/Rear Window Enclosure and adhesive Velcro kit from the shipping box.

Contents: 1 – Polaris Kawasaki 4010 TRANS Door/Rear Window Enclosure: 3 Panels included – 2 Side Door panels and 1 Rear Panel (This Enclosure is for use with a Polycarbonate Windshield and Hard Top)

### Adhesive Velcro Kit

Qty/Size	Location	Orientation
1-46"	Bottom of Rear Panel	Horizontal
2-6"	Top Corners of Rear Panel	Horizontal Around Roll Bar
2-6"	Middle of side panel above doors	Horizontal Around Roll Bar
2-6"	Back corner of side panel above doors	Horizontal Around Roll Bar
2-6"	Upper portion of middle roll bar uprights to match straps	Horizontal Around Roll Bar
2-6"	Lower portion of middle roll bar uprights to match straps	Horizontal Around Roll Bar
2-6"	Lower/middle of back doors to match double-sided straps	Horizontal Around Roll Bar
2-28"	Bottom of Front Doors (Rocker Panel)	Horizontal
2-25"	Bottom of Back Doors (Rocker Panel)	Horizontal
2-3.5"	Bottom of Front Wing (Rocker Panel)	Horizontal
2-13"	Top of Back Panel	Horizontal Inside of Roll Bar
2-8"	Center of Back Roll Bar Uprights	Vertical
2-4.5"	Front of top/side panel	Vertical
2-4.5"	Upper/back of side panel	Horizontal
2-8"	Side Horizontal Roll Bars Above Back Seats	Horizontal Inside of Roll Bar
2-14"	Side Horizontal Roll Bars Above Front Seats	Horizontal Inside of Roll Bar
2-10"(1")	Lower/back portion of Back Seats	Vertical
2-40"	Front roll bar uprights	Vertical-Cut for Clamps

### Note:

***Before applying adhesive Velcro Strips to your vehicle, surfaces should be free of dust, dirt and oil. Clean vehicle surfaces with water or Windex only. Do not use solvents to prepare your vehicle surfaces for Velcro application.***

***Never fold your enclosure when it's removed. The vinyl will retain creases where folded. Folding the enclosure will void all guarantees and warranties.***

**Step 2:** Loosen or remove your top and windshield. With chalk, mark the location of all clamps on the roll bars. The Velcro tabs on the front roll bar upright and the side horizontal support bars may need to be cut to allow for the clamps.

**Step 3:** Lay out each panel on a clean surface. Make note of the sewn-in Velcro on each panel. If needed, with the help of an assistant, hold the panel to the cab frame to help visualize the placement of the adhesive Velcro.

**Step 4:** Remove the clear plastic backing from the Velcro strips (one at a time) and install as indicated on page 1. The following pictures will help show placement of the adhesive Velcro.



Install 46" Velcro Strip on Top Raised Panel below rear window



Install 6" Velcro Strip horizontally around the bottom of the Center Roll Bar upright



Install 6" Velcro Strip horizontally around the Center Roll Bar upright approx 24" below the cross-member weld joint



Install 6" Velcro strips horizontally around the Center Roll Bar upright approx 8" below the cross-member weld



Install two 6" Velcro strips horizontally at the top and bottom of the rear Roll Bar upright exhaust port



Install 6 1/2" Velcro Strip horizontally around the bottom of the Rear Roll Bar upright



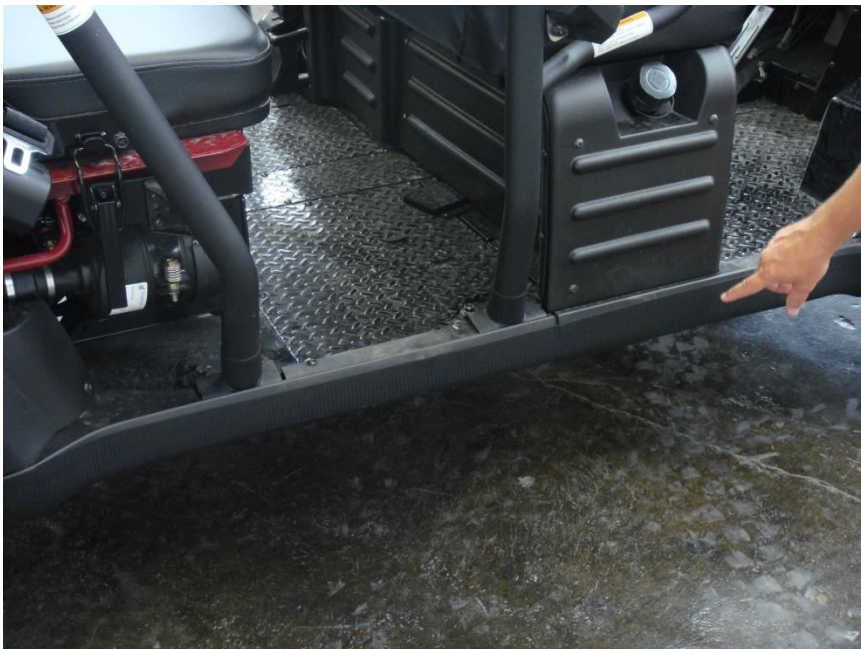
Install the 13" Velcro Strips on the Dash Cowl / Fender Well – you will need to split the Velcro strip to curve and match sewn in Velcro.



Install 10" (1" wide) Velcro Strips vertically to the Cargo Bed



Install 4 ½", 18", 8", 13" Velcro strips to inside of top horizontal roll bars as indicated in Velcro kit contents.



Install front Rocker Panel 28" and rear Rocker panel 25" Velcro strips

**Step 5:** Place the enclosure on the Roll Bar Cab Frame and Zip the Door Panels and Rear Window Panel to it as shown in Figure 5.1 and 5.2A and 5.2B. The vehicle bed will need to be raised for this installation step. At this point make sure each installed Velcro Strip is aligned with each respective enclosure Velcro tab.



Figure 5.1 - Attach Door Panels by zipping them to the Top / Front Windshield panels



Figure 5.2A - attach Rear Window Panel by Zipping it to the Top and Door Panels. Note Rear Roll Bar Exhaust port must be exposed





Figure 5.2B – attach Rear Window Panel by Zipping it to the Top and Door Panels. Note Rear Roll Bar Exhaust port must be exposed

**Step 6:** Begin attaching Enclosure by first squaring the back of the Enclosure to the Rear of the Cab frame and attaching the Rear Cab Window bottom Velcro tab to the installed 47" Velcro strip as shown in figure 6.1.



Figure 6.1 - square rear of enclosure to cab and attach rear enclosure Velcro tab to installed 47" Velcro strip

**Step 7A:** Pulling upward & outward on the 6" Rear Roll Bar Post Enclosure Velcro Tabs, attach Rear Roll Bar upright Post Enclosure tabs to installed 6" Velcro Strips by wrapping the tabs around the Roll Bar and the installed Velcro strips as shown in figure 7.1 and 7.2

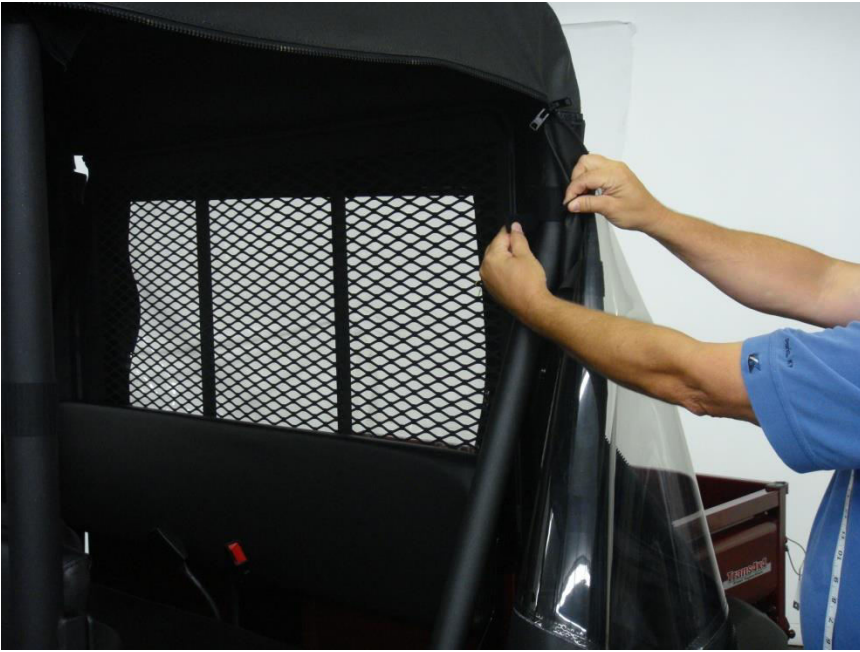


Figure 7.1 - attach 6" Rear Roll Bar post enclosure Velcro tabs to installed Velcro strips above and below the Roll bar exhaust port



Figure 7.2 - attach Rear Roll Bar Post enclosure Velcro tabs to the installed Velcro strips at the bottom of the Rear Roll Bar post upright

**Step 7B:** At this time attach Top Roll Bar 4 ½", 18", 8", and 13" Cross-member Velcro Tabs to installed Velcro Strips as shown in figure 7.3

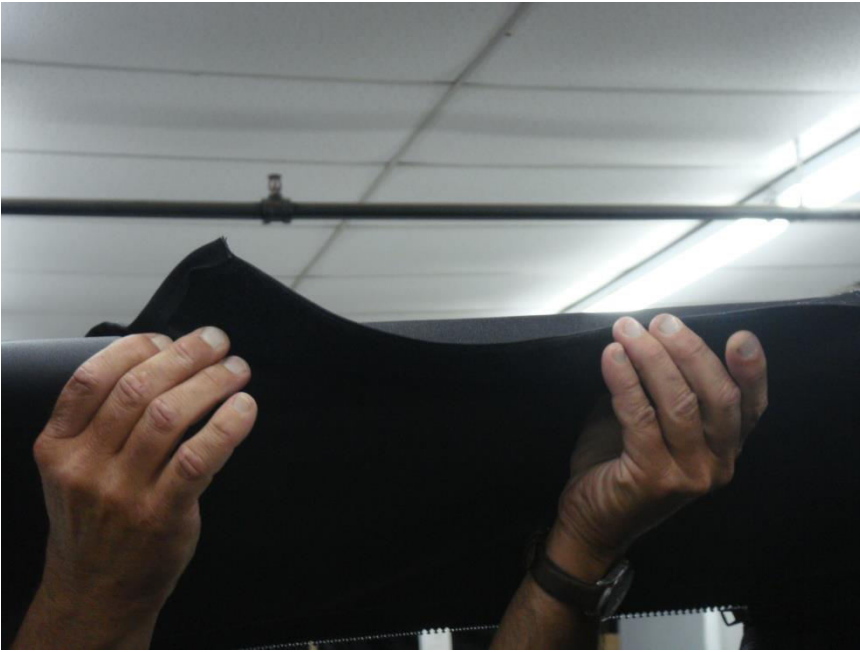


Figure 7.3 – attach Top Roll Bar Cross-member Velcro tabs.

**Step 8:** Attach Center Roll Bar upright Post Enclosure tabs to installed 6 " Velcro Strips by wrapping the taps around the Roll Bar and the installed Velcro strips as shown in figure 8.1 and 8.2

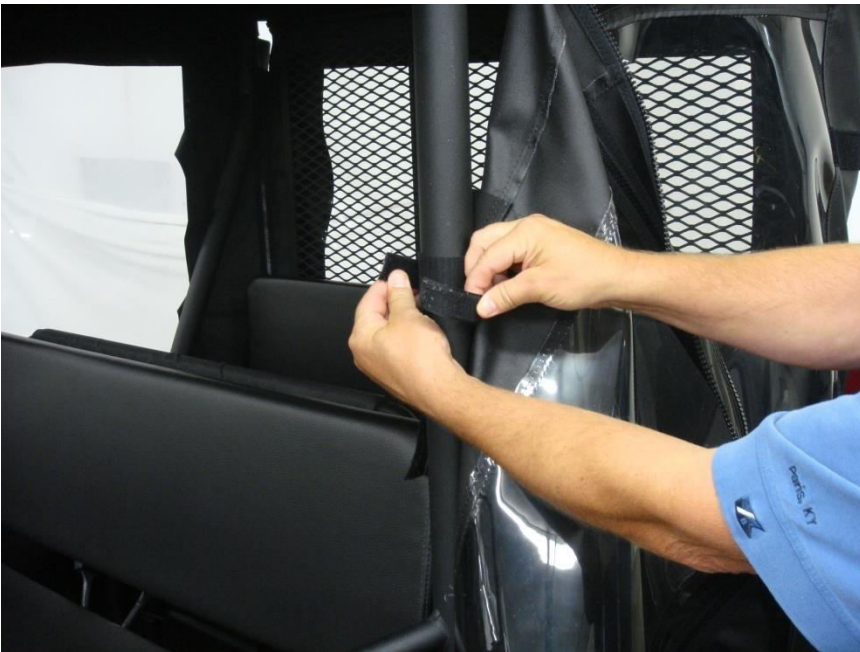


Figure 8.1 - attach Center Roll Bar upright enclosure tabs to installed 6" Velcro strips at the center and top of the Roll Bar Upright



Figure 8.2 - attach Center Roll Bar upright enclosure bottom tabs to installed 6" Velcro strips

**Step 9:** Attach the Windshield Roll Bar Post Enclosure tabs to the installed 40" Velcro Strips as shown in figure 9.1. Your hard windshield will be placed over these tabs. Note: If Tabs interfere with your hard windshield clamp locations you will need to cut out 2" sections of the tab using household scissors being careful not to cut the binding and searing frayed fabric ends as shown in figure 9.2, 9.3 and 9.4.



Figure 9.1 – attach Windshield Roll Bar post Velcro Tabs to installed 40" Velcro Strips



Figure 9.2 - Mark windshield tabs where hard windshield clamps are located along the windshield Roll Bar



Figure 9.3 – Cut the Tab being very careful not to cut the binding at the edge



Figure 9.4 – Seal Frayed Tab thread at the cut area using a lighter

**Step 10:** Zip Doors closed and attach Dash Cowl 13" side tabs to respective Velcro Strips. Also attach 10" (1" wide) Cargo Bed Velcro strips at this time.

**Step 11:** Repeat any steps necessary until the Enclosure fits snug to the Vehicle Roll Bar structure and windows are tight.



Repeat any steps necessary to align and tighten the enclosure to the Cab structure.

**Step 12:** Replace your hard windshield and hard top.

**See enclosed Product Care sheet for instructions on how to properly care for your 3SI UTV Enclosure.**



# 3 STAR INDUSTRIES

## Care Instructions

### Heavy Duty Marine and Mil-Spec Military Fabric Cleaning

All 3SI UTV Enclosure Heavy Duty Marine and Military Camo fabrics are guaranteed against excessive loss of color or strength under normal exposure and use conditions. Periodic cleaning with a solution of 4 ounces of bleach and 2 ounces of soap (NOT DETERGENTS) in one gallon of water is recommended to minimize accumulations of dirt, bird droppings and other contaminants which can support surface mildew and stain fabric.

### Soft Vinyl Window Cleaning

3SI UTV Enclosure Vinyl Windows will remain clear and provide great visibility under normal exposure conditions if properly cleaned. Periodic cleaning with a solution of 1 ounce of soap in one gallon of water is all that is needed to maintain good window cleanliness and visibility. Caution: DO NOT USE ANY DETERGENTS, WINDOW CLEANERS, SOLVENTS or CHEMICALS OF ANY KIND TO CLEAN VINYL WINDOWS AS THESE WILL CLOUD THE WINDOWS. ALSO, NEVER RUB WINDOWS WITH A DRY CLOTH OR RAG.

### Storage Recommendations

Before removing the 3SI UTV Enclosure from your vehicle for storage, clean the Fabric and Vinyl Windows thoroughly as indicated above. Any dirt remaining on the Enclosure may scratch Vinyl Windows while in storage. Once the Enclosure has been cleaned it should be placed on a large flat surface. Lay the Enclosure out so that Vinyl Windows are in a flat position. Fold the doors over the rear panel first then fold the top and windshield on top of the doors keeping the Vinyl Windows flat. Caution: **FOLDING VINYL WINDOWS WILL CAUSE PERMANENT CREASE DAMAGE AND WILL VOID ALL WARRANTIES.** Once the Enclosure is folded keeping all Vinyl Windows flat, begin rolling the Enclosure into an 8" roll. Place the 8" roll into a box and store at normal room temperature. To ensure long life of your enclosure it is best not to store in extreme temperatures.

### Hauling

The ONLY products manufactured by 3SI UTV that can be hauled while installed are the hard windshields, full cab enclosures, and door/rear window combos with top and windshield installed. **However, the full cab enclosures and door/rear window combos should be tied down before hauling.** Speed should not exceed 55 mph while hauling to prevent ripping and shredding of the material and zippers. NEVER HAUL INSTALLED SOFT TOPS, WINDSHIELD TOP COMBOS, AND SUMMER CABS. **REMOVE BEFORE HAULING.**

