



Installation Instructions

Thank you for purchasing a UTV enclosure manufactured in the USA with pride by GCL UTV. Your enclosure is made of heavy duty fabric that is water repellent and resistant to mildew, ultra-violet rays and abrasion. With proper installation and care you can expect many years of service from your GCL UTV enclosure.

SOME IMPORTANT NOTES BEFORE GETTING STARTED....

- The enclosure attaches to your UTV's cab frame with Velcro. The technical term for Velcro is hook and loop. Loop is the soft side and hook, the rough side. Loop has been sewn into the enclosure at various points. Adhesive hook has been supplied to attach to your cab frame, corresponding to the sewn-in loop. If you struggle with placement of the adhesive hook, with the enclosure held to the cab frame, note the locations of the sewn-in loop. The adhesive hook is attached to the cab frame at those locations.
- The adhesive hook should be applied at a temperature of 60 degrees or above. **For maximum adhesion, when the adhesive hook is in place, allow the adhesive to cure for 24 hours before attaching the loop to the hook.**
- Clean the surfaces the adhesive hook will be attached to before beginning installation. A light cleaning with mild soap and water is best. A little Windex works great. Do NOT wax or clean with a compound that leaves the frame slick. The adhesive hook will not stick to a slick surface. Again, a light cleaning is best.
- Your enclosure is not a "one size fits all" product. The enclosure was designed and manufactured specifically for your model UTV. As a result, the enclosure should fit square and snug to the cab frame.
- Periodic cleaning of your enclosure with mild soap and water is recommended to minimize accumulations of dirt.
- Clean the vinyl windows with mild soap, water, and a soft cloth to avoid scratches. DO NOT USE ANY DETERGENTS, WINDOW CLEANERS, SOLVENTS OR CHEMICALS TO CLEAN VINYL WINDOWS.
- Clean your enclosure and allow it to dry before removing for storage. **Never fold your enclosure to store.** Roll the enclosure to avoid creasing the vinyl windows. Creases in the vinyl windows cannot be removed. **CREASING THE VINYL WINDOWS VOIDS ALL WARRANTIES AND GUARANTEES.**
- The only enclosures manufactured by GCL UTV that can be hauled when installed are Lexan windshields, full cab enclosures, and door/rear window combos with top and windshield installed. However, the enclosures should be tied down before hauling. Speed should not exceed 55 mph while hauling to prevent ripping and shredding of the material and zippers. REMOVE ALL OTHER ENCLOSURES BEFORE HAULING.

PLEASE READ AND FOLLOW THE DETAILED INSTRUCTIONS THAT ARE ATTACHED.



John Deere Gator XUV S-4 Full Cab/Vinyl Windshield

Installation Instructions

You have just purchased the best Enclosure for your Utility Terrain Vehicle available on the market today. Your Enclosure is made of Heavy Duty Fabric that is Water Repellent and resistant to Mildew, Ultra-Violet Sun Rays and Abrasion. With proper installation and care you can expect many years of long lasting fit, color and service life from your **GCL UTV Cab Enclosure**.

Install the cab enclosure in the following order:

Step 1: Remove your GCL UTV Cab Enclosure and Velcro kit from the shipping box.

Step 2: Install the enclosure in the following order:

- Windshield/Top-See instructions for ATTACHING STRAPS
- Back Panel-Zip back panel to the rear visor. Raise the bed to install the back panel.
- Door Panels-Zip the door panels to the side of the Windshield/Top

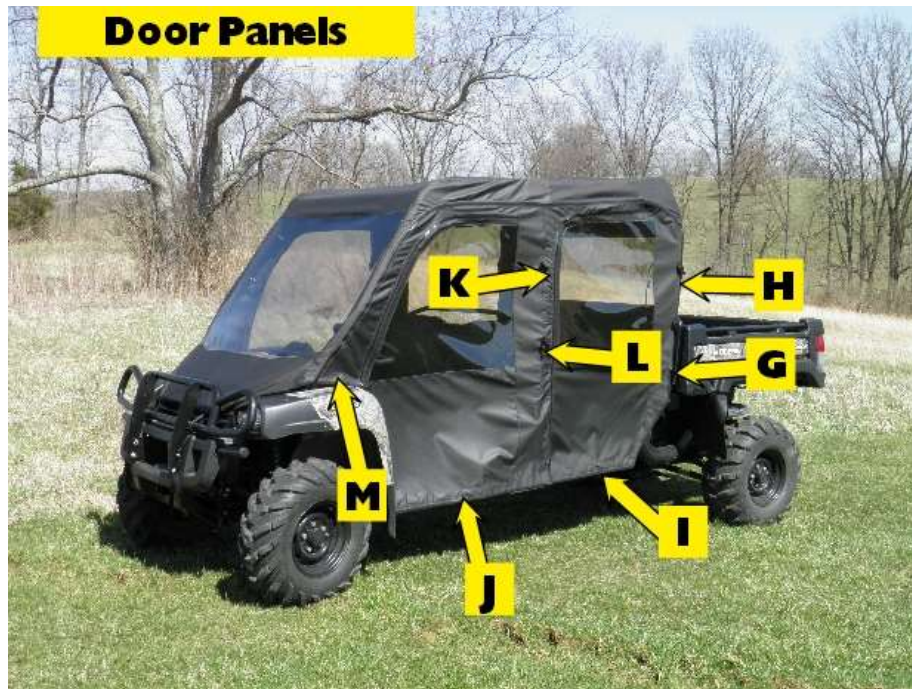
Adhesive hook strips will be attached to the cab frame corresponding to the loop strips. Remove the backing from the adhesive hook strips and install as indicated in the following adhesive hook table and reference pictures. If you struggle with placement, hold or drape the enclosure sections to the frame. Note the location of the sewn in loop strips or double-sided straps. Adhesive hook is adhered to the frame or body corresponding to the sewn in loop and double-sided straps.

| Adhesive Hook Kit Contents/Placement | | |
|---------------------------------------------|-----------------|--------------------------------------------------------------------------------------------------------------------------------------------------------------------------------------------------------------------------------------------------------------|
| WINDSHIELD/TOP | | |
| Reference | Qty-Size | Placement |
| A | 2-10" | Attach vertically to the outside edge front roll bars corresponding to the 10" webbing/loop tabs at the top of the windshield. Grasp the tabs and pull the windshield from side to side. When in place, attach the webbing/loop tabs to the adhesive strips. |

| | | |
|--------------------|-------|----------------------------------------------------------------------------------------------------------------------------------------------------------------------------------------------------------------------------------------------------------------|
| B | 2-8" | Attach vertically to the outside edge front roll bars corresponding to the 8" webbing/loop tabs at the side of the windshield. Grasp the tabs and pull the windshield from side to side. When in place, attach the webbing/loop tabs to the adhesive strips. |
| C | 2-4" | Attach vertically to the outside edge front roll bars corresponding to the 4" webbing/loop tabs at the bottom of the windshield. Grasp the tabs and pull the windshield from side to side. When in place, attach the webbing/loop tabs to the adhesive strips. |
| D | 2-12" | Wrap around roll bars corresponding to double-side straps on the side panel. Wrap straps around the adhesive hook strips. |
| E | 2-6" | Wrap around roll bars corresponding to double-side straps at the rear corner. Wrap straps around the adhesive hook strips. |
| BACK PANEL | | |
| No Ref | 1-53" | Attach horizontally to the body corresponding to the sewn in loop in the bottom of the rear panel. |
| F | 2-8" | Attach vertically to the outside edge of the rear roll bar uprights corresponding to the 8" webbing/loop tabs on the sides. Grasp the tabs and pull the back panel from side to side. When in place, attach the webbing/loop tabs to the adhesive strips. |
| DOOR PANELS | | |
| G | 2-10" | Attach vertically to the cab body on the back side of the door panels corresponding to the 10" sewn in loop strip. Attach sewn in loop strips in the middle/back of the door panels to hold in place. |
| H | 2-22" | Attach vertically to the back side of the rear roll bar uprights corresponding to the 22" webbing/loop tab. Attach sewn in loop strips in the middle/back of the door panels to hold in place. Use only when a hard back panel or no back panel is installed. |
| I | 2-24" | Attach horizontally to the back seat rocker panel area. Attach sewn in loop strips in bottom of door to the adhesive hook strips. |
| J | 2-40" | Attach horizontally to the front seat rocker panel area. Attach sewn in loop strips in bottom of door to the adhesive hook strips. |
| K | 2-6" | Wrap around middle roll bar uprights corresponding to double-side straps. Wrap straps around the adhesive hook strips. |
| L | 2-6" | Wrap around middle roll bar uprights corresponding to double-side straps. Wrap straps around the adhesive hook strips. |

| | | |
|---|------|------------------------------------------------------------------------------------|
| M | 2-4" | Attach to body corresponding to the sewn in loop strips at the bottom of the wing. |
|---|------|------------------------------------------------------------------------------------|





Step 3: After all adhesive hook strips are attached, begin attaching the enclosure to the cab frame. As you attach the hook and loop, square each panel to the frame. **PLEASE NOTE, FOR MAXIMUM ADHESION, ALLOW THE ADHESIVE HOOK TO ADHERE TO THE FRAME FOR 24 HOURS BEFORE PULLING AGAINST THE HOOK WITH THE LOOP STRIPS.**

Step 4: Repeat any steps necessary to achieve a snug fit on the cab frame.

See enclosed Product Care sheet for instructions on how to properly care for your GCL UTV Enclosure.

ATTACHING STRAPS

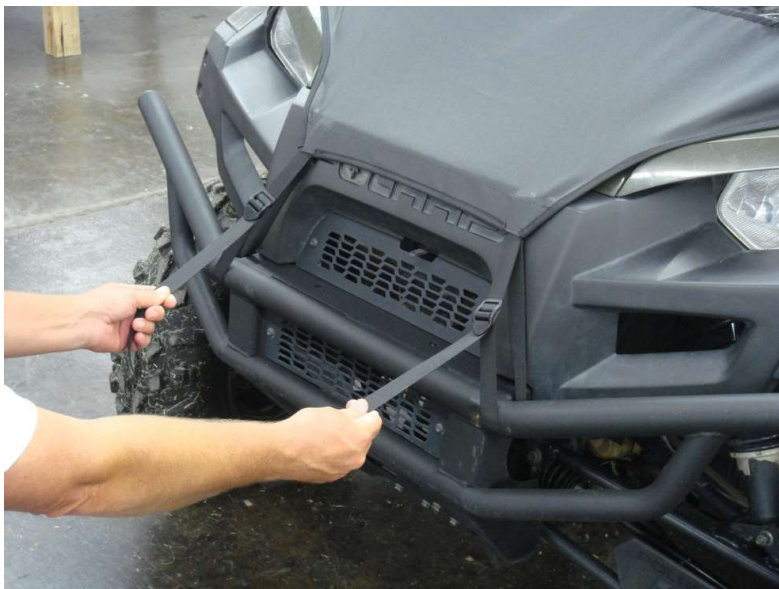
Fasten the front hood straps to the vehicle front bumper as shown below. Bringing the end of the straps up to the latch buckle, run the end through the back of the top buckle opening first and then through the front of the lower buckle opening as shown below. **DO NOT FULLY TIGHTEN FRONT HOOD STRAPS AT THIS TIME.**



Before tightening the hood straps, make sure the windshield is square and pulled tight from side to side. Grasp the webbing/loop tabs on either side of the windshield and reposition to center and tighten the windshield as shown below.



Tighten hood straps by pulling downward from the buckle on both strap ends at the same time as shown below.





Care Instructions

Heavy Duty Marine and Mil-Spec Military Fabric Cleaning

All GCL UTV Enclosure Heavy Duty Marine and Military Camo fabrics are guaranteed against excessive loss of color or strength under normal exposure and use conditions. Periodic cleaning with a solution of 4 ounces of bleach and 2 ounces of soap (NOT DETERGENTS) in one gallon of water is recommended to minimize accumulations of dirt, bird droppings and other contaminants which can support surface mildew and stain fabric.

Soft Vinyl Window Cleaning

GCL UTV Enclosure Vinyl Windows will remain clear and provide great visibility under normal exposure conditions if properly cleaned. Periodic cleaning with a solution of 1 ounce of soap in one gallon of water is all that is needed to maintain good window cleanliness and visibility. Caution: DO NOT USE ANY DETERGENTS, WINDOW CLEANERS, SOLVENTS or CHEMICALS OF ANY KIND TO CLEAN VINYL WINDOWS AS THESE WILL CLOUD THE WINDOWS. ALSO, NEVER RUB WINDOWS WITH A DRY CLOTH OR RAG.

Storage Recommendations

Before removing the GCL UTV Enclosure from your vehicle for storage, clean the Fabric and Vinyl Windows thoroughly as indicated above. Any dirt remaining on the Enclosure may scratch Vinyl Windows while in storage. Once the Enclosure has been cleaned it should be placed on a large flat surface. Lay the Enclosure out so that Vinyl Windows are in a flat position. Fold the doors over the rear panel first then fold the top and windshield on top of the doors keeping the Vinyl Windows flat. Caution: **FOLDING VINYL WINDOWS WILL CAUSE PERMANENT CREASE DAMAGE AND WILL VOID ALL WARRANTIES.** Once the Enclosure is folded keeping all Vinyl Windows flat, begin rolling the Enclosure into an 8" roll. Place the 8" roll into a box and store at normal room temperature. To ensure long life of your enclosure it is best not to store in extreme temperatures.

Hauling

The ONLY products manufactured by GCL UTV that can be hauled while installed are the hard windshields, full cab enclosures, and door/rear window combos with top and windshield installed. **However, the full cab enclosures and door/rear window combos should be tied down before hauling.** Speed should not exceed 55 mph while hauling to prevent ripping and shredding of the material and zippers. NEVER HAUL INSTALLED SOFT TOPS, WINDSHIELD TOP COMBOS, AND SUMMER CABS. **REMOVE BEFORE HAULING.**

