



Installation Instructions

Thank you for purchasing a UTV enclosure manufactured in the USA with pride by 3SI UTV. Your enclosure is made of heavy duty fabric that is water repellent and resistant to mildew, ultra-violet rays and abrasion. With proper installation and care you can expect many years of service from your 3SI UTV enclosure.

SOME IMPORTANT NOTES BEFORE GETTING STARTED....

- The enclosure attaches to your UTV's cab frame with Velcro. The technical term for Velcro is hook and loop. Loop is the soft side and hook, the rough side. Loop has been sewn into the enclosure at various points. Adhesive hook has been supplied to attach to your cab frame, corresponding to the sewn-in loop. If you struggle with placement of the adhesive hook, with the enclosure held to the cab frame, note the locations of the sewn-in loop. The adhesive hook is attached to the cab frame at those locations.
- The adhesive hook should be applied at a temperature of 60 degrees or above. **For maximum adhesion, when the adhesive hook is in place, allow the adhesive to cure for 24 hours before attaching the loop to the hook.**
- Clean the surfaces the adhesive hook will be attached to before beginning installation. A light cleaning with mild soap and water is best. A little rubbing alcohol works great. Do NOT wax or clean with a compound that leaves the frame slick. The adhesive hook will not stick to a slick surface. Again, a light cleaning is best.
- Your enclosure is not a "one size fits all" product. The enclosure was designed and manufactured specifically for your model UTV. As a result, the enclosure should fit square and snug to the cab frame.
- Periodic cleaning of your enclosure with mild soap and water is recommended to minimize accumulations of dirt.
- Clean the vinyl windows with mild soap, water, and a soft cloth to avoid scratches. DO NOT USE ANY DETERGENTS, WINDOW CLEANERS, SOLVENTS OR CHEMICALS TO CLEAN VINYL WINDOWS.
- Clean your enclosure and allow it to dry before removing for storage. **Never fold your enclosure to store.** Roll the enclosure to avoid creasing the vinyl windows. Creases in the vinyl windows cannot be removed. **CREASING THE VINYL WINDOWS VOIDS ALL WARRANTIES AND GUARANTEES.**
- The only enclosures manufactured by 3SI UTV that can be hauled when installed are Lexan windshields, full cab enclosures, and door/rear window combos with top and windshield installed. However, the enclosures should be tied down before hauling. Speed should not exceed 55 mph while hauling to prevent ripping and shredding of the material and zippers. REMOVE ALL OTHER ENCLOSURES BEFORE HAULING.

PLEASE READ AND FOLLOW THE DETAILED INSTRUCTIONS THAT ARE ATTACHED.



2015+ John Deere Gator Mini-Cab (Vinyl Windshield, Top, & Back)

Installation Instructions

You have just purchased the best Enclosure for your Utility Terrain Vehicle available on the market today. Your Enclosure is made of Heavy Duty Fabric that is Water Repellent and resistant to Mildew, Ultra-Violet Sun Rays and Abrasion. With proper installation and care you can expect many years of long lasting fit, color and service life from your **3SI UTV Cab Enclosure**.

The enclosures for the 2015+ John Deere Gator were designed to be modular. Each enclosure panel can be installed independent of the other panels. As a result, you choose your level of coverage.

Install the modular cab enclosure in the following order:

- Back Panel
- Door Panels
- Windshield/Top

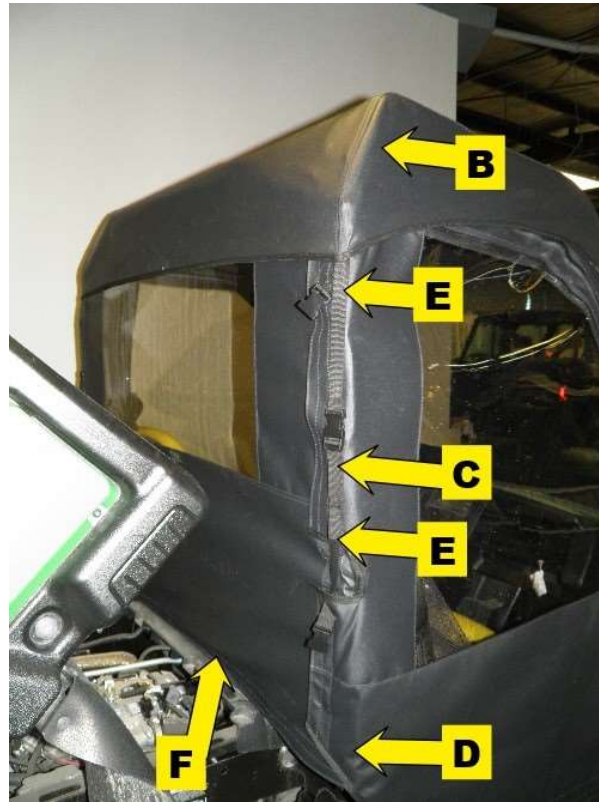
Step 1: Remove your 3SI UTV Cab Enclosure and Velcro kit from the shipping box.

Step 2: As each panel is to be installed, hold the panel to the vehicle's cab frame. Note the location of sewn-in loop strips in the enclosure. Adhesive hook strips will be attached to the cab frame corresponding to the loop strips. Remove the backing from the adhesive hook strips and install as indicated in the following adhesive hook tables and pictures.

Adhesive Hook Kit Contents/Placement		
BACK PANEL		
Reference	Qty-Size	Placement
A	1-25"	Attach horizontally to the inside edge of the rear crossbar corresponding to the sewn in loop at the top of the back panel. Hang the back panel over the cross bar and attach the sewn in loop to the adhesive hook strip.

B	2-8"	Attach vertically to the outside edge of the brackets in the top/rear corner of the roll bars corresponding to the sewn in loop at the top/sides of the back panel.
C	2-8"	Wrap vertically to the outside edge of the rear roll bar uprights corresponding to the 8" webbing/loop tabs. Use the tabs to tighten the back panel from side to side. Attach the sewn-in loop on the tabs to the adhesive strips.
D	2-12"	Wrap vertically to the outside edge of the rear roll bar uprights corresponding to the 12" webbing/loop tabs. Use the tabs to tighten the back panel from side to side. Attach the sewn-in loop on the tabs to the adhesive strips.
E	4-6"	Wrap horizontally around the rear roll bar uprights corresponding to the double-sided hook and loop straps on the sides of the rear panel. Wrap the double-sided straps around the adhesive strips to hold the rear panel in place.
F	1-53"	Attach horizontally to the body corresponding to the sewn-in loop in the bottom of the back panel. Attach the sewn-in loop to the adhesive hook strip to hold the bottom of the panel in place.





Adhesive Hook Kit Contents/Placement

WINDSHIELD/TOP

P	2-6"	Wrap horizontally around the rear roll bar uprights just below the bottom of the side restraint bars. The bottom section of the tension straps wrap around the adhesive strips. When the windshield/top is mounted, attach the snap buckles together. When the windshield/top is in place, pull the loose strap on the bottom section of the tension strap to pull the top down.
---	------	--

Q	2-10"	Attach vertically to the outside edge of the front roll bars corresponding to the webbing/loop tab near the top of the windshield. Use the tab to pull the windshield tight from side to side.
P	2-8"	Attach vertically to the outside edge of the front roll bars corresponding to the webbing/loop tab near the top of the windshield. Use the tab to pull the windshield tight from side to side.
R	2-4"	Attach vertically to the outside edge of the front roll bars corresponding to the webbing/loop tab near the top of the windshield. Use the tab to pull the windshield tight from side to side.





Step 3: After all adhesive hook strips are attached, begin attaching the enclosure to the cab frame. As you attach the hook and loop, square each panel to the frame. **PLEASE NOTE, FOR MAXIMUM ADHESION, ALLOW THE ADHESIVE HOOK TO ADHERE TO THE FRAME FOR 24 HOURS BEFORE PULLING AGAINST THE HOOK WITH THE LOOP STRIPS.**

Step 4: With the windshield/top on the cab frame, attach the front straps as shown below.

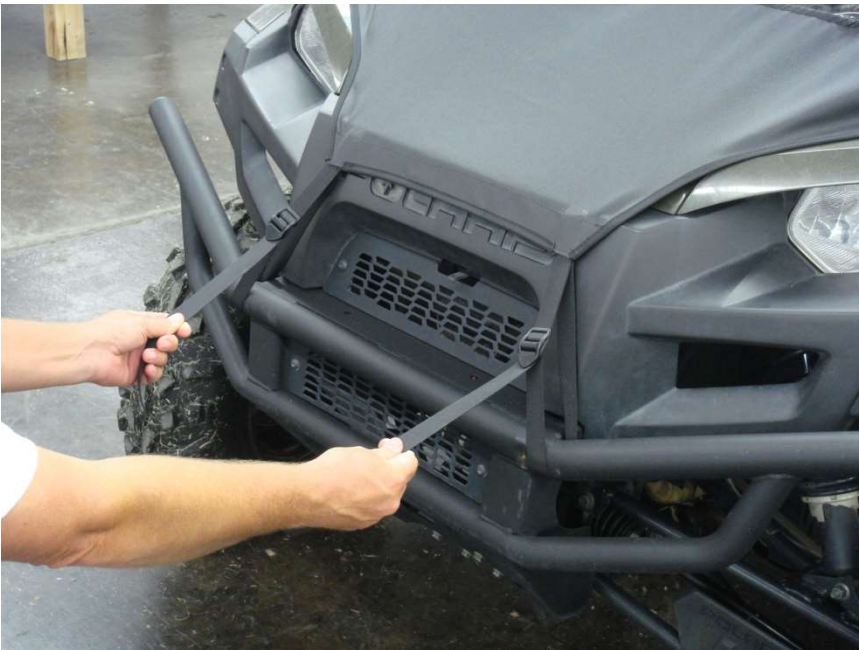
Fasten the front hood straps to the front bumper as shown below.



Bringing the end of the straps up to the latch buckle, run the end through the back of the top buckle opening first and then through the front of the lower buckle opening as shown.



Tighten front hood straps by pulling downward from the buckle on both strap ends at the same time as shown below. **DO NOT FULLY TIGHTEN UNTIL THE TENSION STRAP ON THE BACK OF THE WINDSHIELD/TOP IS IN PLACE.**



Step 4: Repeat any steps necessary to achieve a snug fit on the cab frame.

See enclosed Product Care sheet for instructions on how to properly care for your 3SI UTV Enclosure.



Care Instructions

Heavy Duty Marine and Mil-Spec Military Fabric Cleaning

All 3SI UTV Enclosure Heavy Duty Marine and Military Camo fabrics are guaranteed against excessive loss of color or strength under normal exposure and use conditions. Periodic cleaning with a solution of 4 ounces of bleach and 2 ounces of soap (NOT DETERGENTS) in one gallon of water is recommended to minimize accumulations of dirt, bird droppings and other contaminants which can support surface mildew and stain fabric.

Soft Vinyl Window Cleaning

3SI UTV Enclosure Vinyl Windows will remain clear and provide great visibility under normal exposure conditions if properly cleaned. Periodic cleaning with a solution of 1 ounce of soap in one gallon of water is all that is needed to maintain good window cleanliness and visibility. Caution: DO NOT USE ANY DETERGENTS, WINDOW CLEANERS, SOLVENTS or CHEMICALS OF ANY KIND TO CLEAN VINYL WINDOWS AS THESE WILL CLOUD THE WINDOWS. ALSO, NEVER RUB WINDOWS WITH A DRY CLOTH OR RAG.

Storage Recommendations

Before removing the 3SI UTV Enclosure from your vehicle for storage, clean the Fabric and Vinyl Windows thoroughly as indicated above. Any dirt remaining on the Enclosure may scratch Vinyl Windows while in storage. Once the Enclosure has been cleaned it should be placed on a large flat surface. Lay the Enclosure out so that Vinyl Windows are in a flat position. Fold the doors over the rear panel first then fold the top and windshield on top of the doors keeping the Vinyl Windows flat. Caution: **FOLDING VINYL WINDOWS WILL CAUSE PERMANENT CREASE DAMAGE AND WILL VOID ALL WARRANTIES.** Once the Enclosure is folded keeping all Vinyl Windows flat, begin rolling the Enclosure into an 8" roll. Place the 8" roll into a box and store at normal room temperature. To ensure long life of your enclosure it is best not to store in extreme temperatures.

Hauling

The ONLY products manufactured by 3SI UTV that can be hauled while installed are the hard windshields, full cab enclosures, and door/rear window combos with top and windshield installed. **However, the full cab enclosures and door/rear window combos should be tied down before hauling.** Speed should not exceed 55 mph while hauling to prevent ripping and shredding of the material and zippers. NEVER HAUL INSTALLED SOFT TOPS, WINDSHIELD TOP COMBOS, AND SUMMER CABS. **REMOVE BEFORE HAULING.**