

# 3 STAR INDUSTRIES

## John Deere Gator 550 Polycarbonate Back Panel Installation

You have just purchased the best Polycarbonate Back Panel for your Utility Terrain Vehicle available on the market today. Your back panel is made of  $\frac{1}{4}$ " gauge polycarbonate (Lexan) that is virtually unbreakable. With proper installation and care you can expect many years of service life from your **GCL UTV Polycarbonate Windshield**.

**Step 1:** Remove your GCL UTV Polycarbonate back panel from the shipping box. **DO NOT REMOVE PROTECTIVE PLASTIC PAPER FROM THE WINDSHIELD AT THIS TIME. THIS SHOULD BE YOUR LAST INSTALLATION STEP.**

Contents: Polycarbonate Back Panel

Canvas Lower Back Panel

Adhesive Hook Kit

6 – 1-3/4" Loop Clamps, 1-1/2" Bolts, Small Washers, Lock Nuts, Thumb Screws and Neoprene Washers

**Note:** You may need assistance to hold the Windshield in place while hardware is being fastened.

**Step 2:** Place the included loop clamps around the roll bars in the indicated positions.



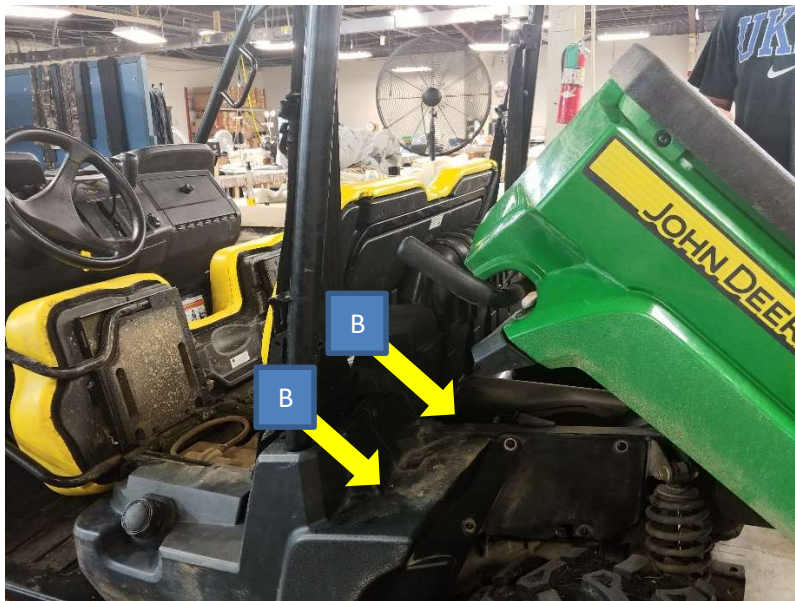
**Step 3:** With the included hardware fasten the back panel to the roll bars with the loop clamps as shown below.



### **\*Optional Lower Canvas Panel Installation\***

Raise the bed of the Gator 550. The lower canvas panel is held in place with hook and loop, aka Velcro. Loop has been sewn into the canvas panel. Adhesive hook is attached to the frame corresponding to the sewn in loop. Hold the lower canvas panel in place to determine the placement of the bottom strip of velcro (B in the chart and picture below). Attach the adhesive hook as described in the table shown below and the following picture. The bottom strip may need to be cut into separate pieces for the best fit.

Reference	Qty/Size	Placement
A	1 – 52 ½”	Attach horizontally along the bottom of the lexan back panel. Attach the top of the canvas panel to the adhesive strip to hold in place.
B	1 – 50 ½”	Attach horizontally behind and to the bottom of the seat. Attach the bottom of the canvas panel to the adhesive strip to hold in place.



**Step 4:** Remove protective plastic paper from each side of your back panel.

**SEE THE ATTACHED CARE INSTRUCTIONS.**



Periodic cleaning using correct procedures can help to prolong service life. For care and cleaning, it is recommended that the following instructions be adhered to:

## Lexan Cleaning Recommendations

- Gently wash Lexan with a solution of mild soap and lukewarm water, using a soft, grid-free cloth or sponge to loosen any dirt or grime.
- Fresh paint splashes, grease and smeared glazing compounds can be removed easily before drying by rubbing lightly with a soft cloth using petroleum ether (BP65), hexane or heptanes. Afterwards, wash the sheet using mild soap and lukewarm water.
- Scratches and minor abrasions can be minimized by using a mild automobile polish. We suggest that a test be made on a small area of the Lexan sheet with the polish selected and that the polish manufacturer's instructions be followed, prior to using the polish on the entire sheet.
- Finally, thoroughly rinse with clean water to remove any cleaner residue and dry the surface with a soft cloth to prevent water spotting.

## Important Instructions

- Never use abrasive or highly alkaline cleaner on Lexan polycarbonate materials.
- Never use aromatic or halogenated solvents like toluene, benzene, gasoline, acetone or carbon tetrachloride on Lexan polycarbonate materials.
- Use of incompatible cleaning materials with Lexan sheet can cause structural and/or surface damage.
- Contact with harsh solvents such as methyl ethyl ketone (MEK) or hydrochloric acid can result in surface degradation and possible crazing of Lexan sheet.
- Never scrub with brushes, steel wool or other abrasive materials.
- Never use squeegees, razorblades or other sharp instruments to remove deposits or spots.
- Do not clean Lexan polycarbonate in direct sunlight or at high temperatures as this can lead to staining.
- For all mentioned chemicals consult the manufacturer's material safety datasheet (MSDS) for proper safety precautions.