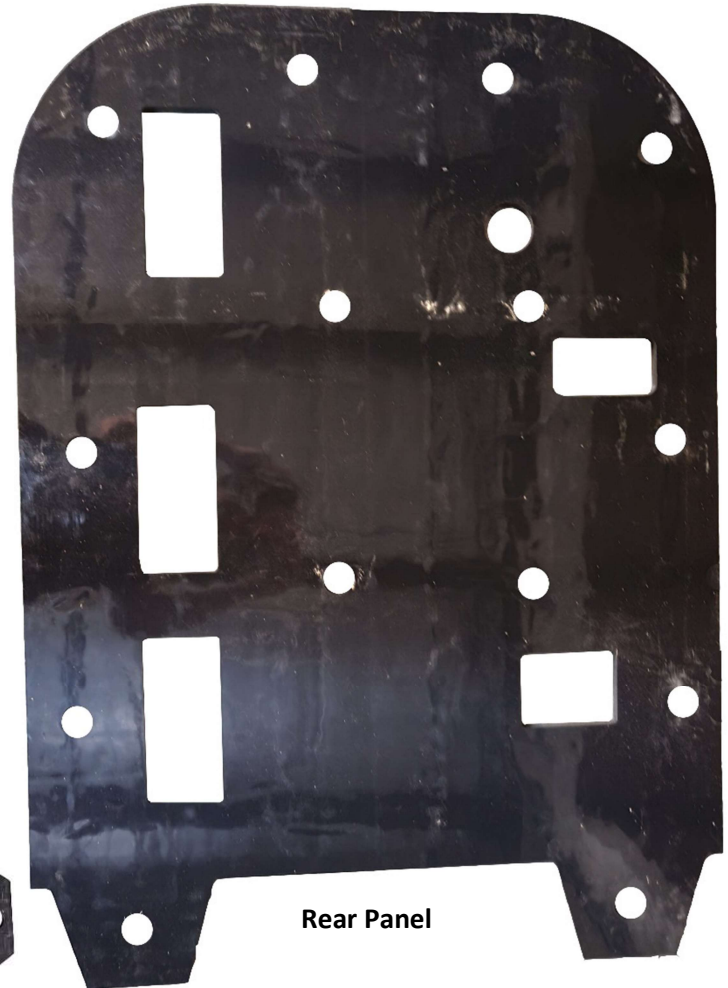




HONDA TALON SKID PLATE

Hardware Kit

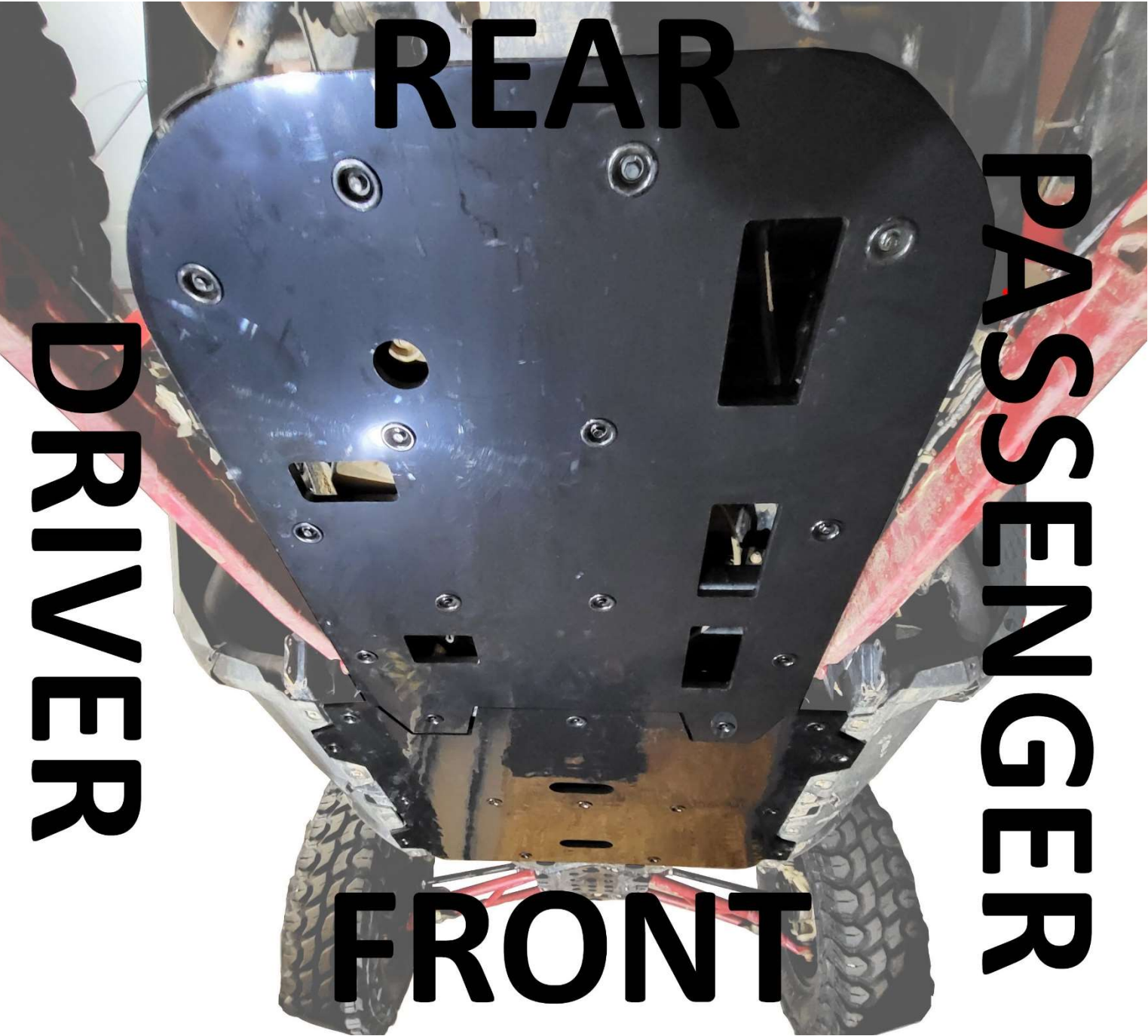
| Hardware | Description | Qty |
|---|-------------|-----|
|  | 20MM BOLT | 22 |
|  | 30MM BOLT | 6 |
|  | SPACER | 6 |
|  | PUSH NUT | 6 |
|  | CUP WASHER | 28 |



Rear Panel



Front Panel



REAR

PASSENGER

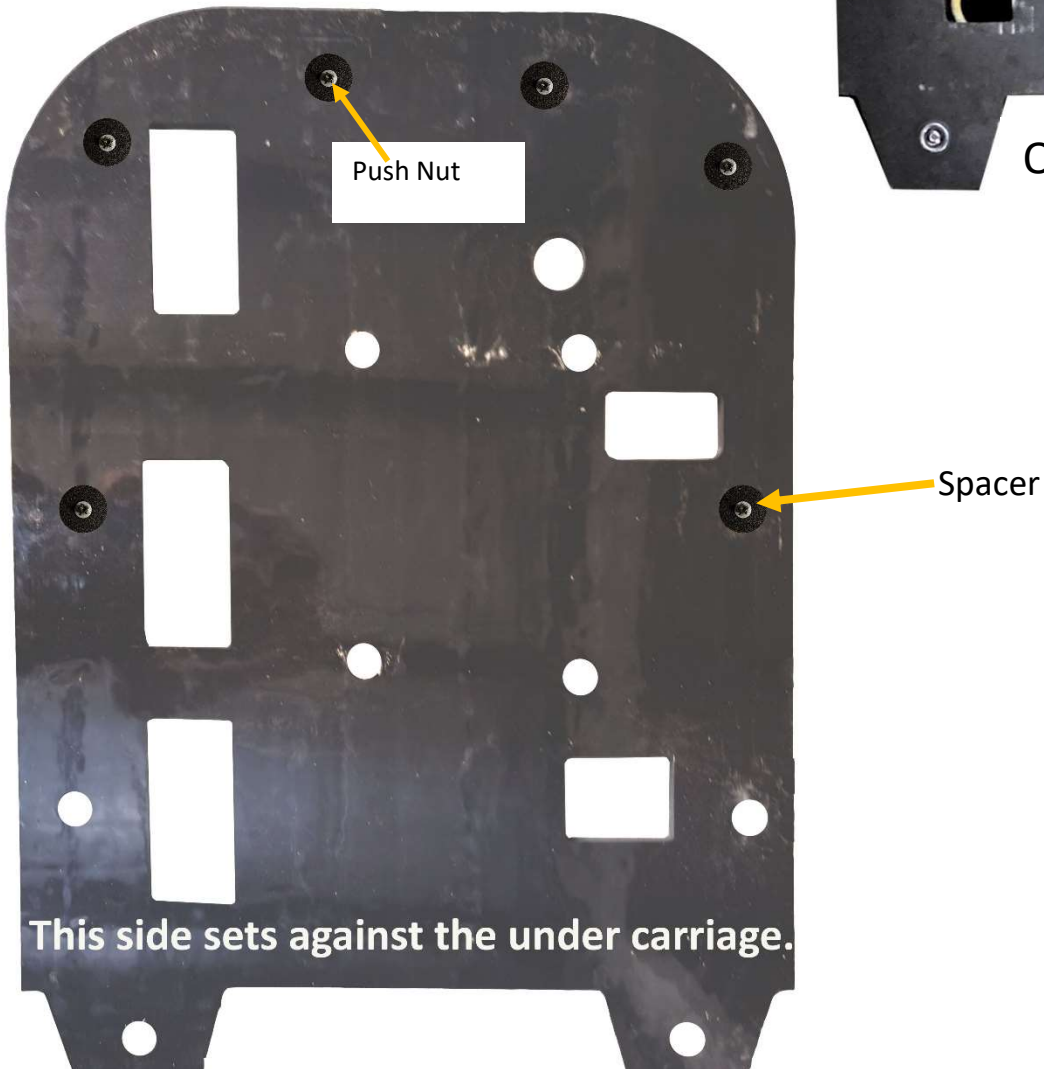
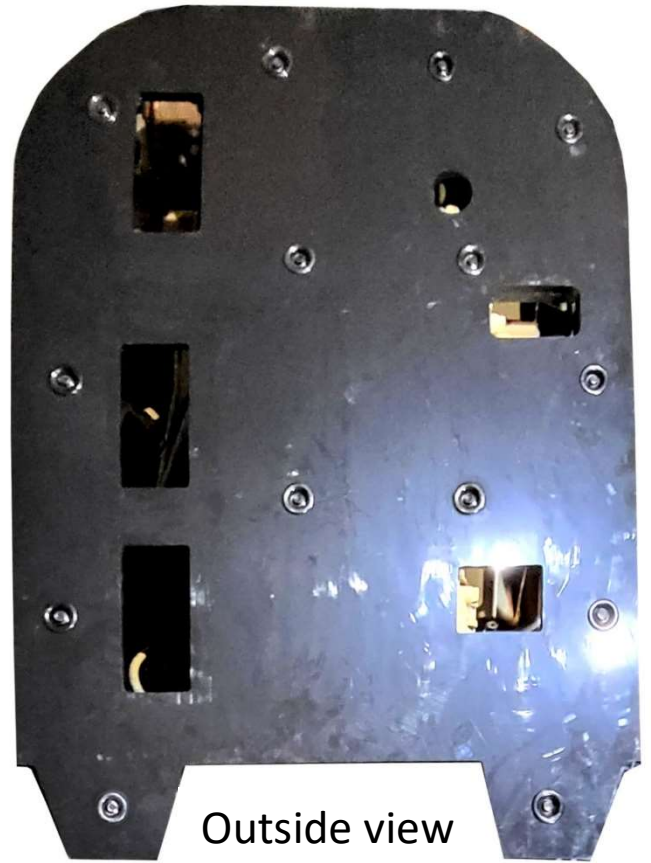
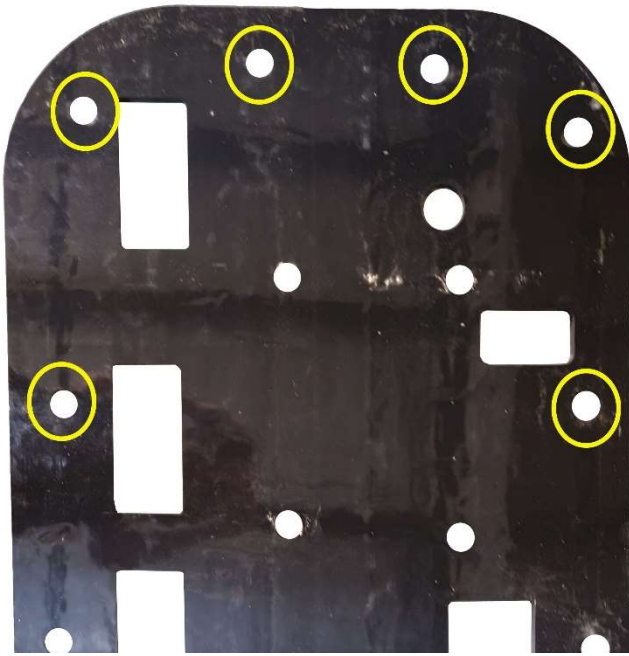
DRIVER

FRONT

1: REMOVE EXISTING SKID PLATE

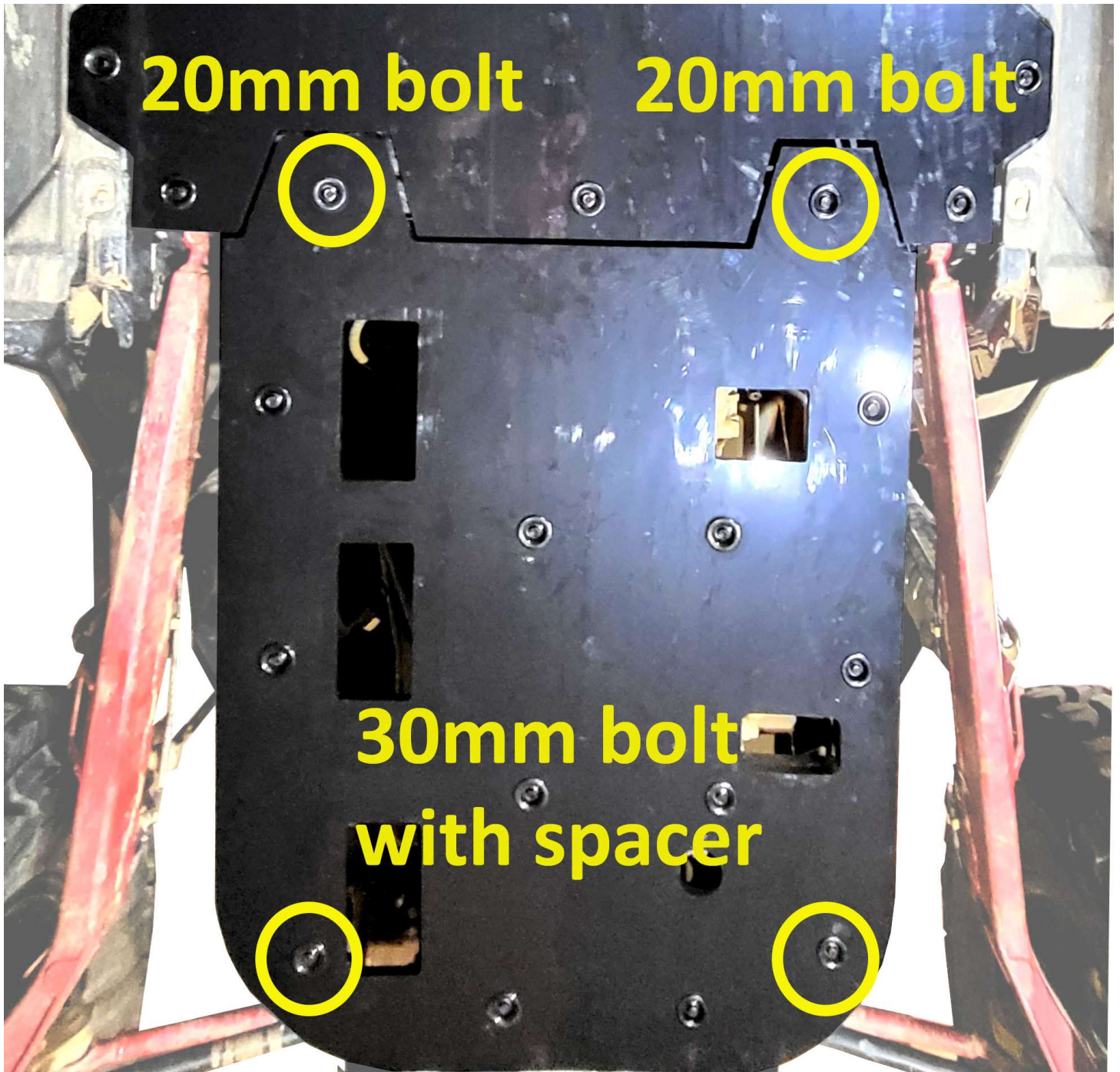
2: ATTACH BOLTS WITH SPACERS.

Assemble 30mm bolts with cup washer, insert through the outside of the skid plate, on the inside, attach spacer with push nut. Do this for all the circled holes in the photo.



3: START WITH THE REAR PLATE.

Hold rear plate to the under carriage. Start a bolt in each corner, this will hold the skid plate in place while starting all other bolts.



4: INSTALL ALL OTHER BOLTS

Hand tighten for now.

5: INSTALL FRONT SKID PLATE

Install all remaining 20mm bolts in the same way as you installed the bolts on the rear skid plate. You will use all 20mm bolts for the front skid plate. **Again do not tighten this will be the last step.**



6: TIGHTEN ALL BOLTS