



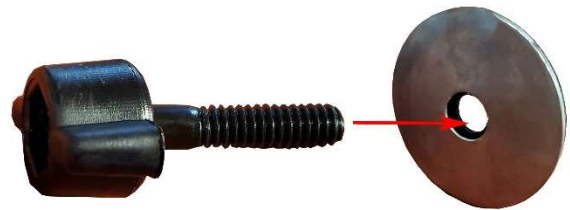
# 3 STAR INDUSTRIES

## Hisun Sector 450

### Lexan Back Panel

Hardware Kit		
Hardware	Description	Qty
	2" CLAMPS	6
	10" VELCRO STRAP	2
	1-1/2" BOLT	6
	WINGNUT	6
	NEOPRENE WASHER	6
	LOCK NUT	6
	SMALL WASHER	6
	105" ADHESIVE VELCRO ROLL	1
	6" ADHESIVE VELCRO STRIP	6

ASSEMBLY BOLT, WING NUT,  
AND NEOPRENE WASHER



**Do not remove protective paper!**

STEP 1: Use the straps to hold the windshield in place while installing the loop clamps.

STEP 2: Using the slot holes as a guide wrap adhesive Velcro strips around the rollbar so that the holes are near the center of the Velcro strips.

STEP 3: Pull back protective paper to reveal slot holes in windshield.

STEP 4: Wrap loop clamps around the roll bar, over the adhesive Velcro strips, flat part facing the windshield.

STEP 5: Insert bolt, wingnut, neoprene washer assembly through the outside of the windshield, secure with lock nut and washer.

STEP 6: Remove straps holding windshield in place.

STEP 7: Remove protective paper from both sides of the windshield.

STEP 8: Replace straps.

STEP 9: If the straps aren't lining up with the slots push your back panel up into place, once you have the back panel positioned properly on the roll bars reattach the straps.

STEP 10: Tighten all lock nuts.



## INSTALL LOWER BACK PANEL

ADHESIVE VELCRO CHART		
A	1-45	RAISE BED, BOTTOM FLAT AREA BEHIND BED
B	2-18	ON THE SIDES OF THE ROLL BAR BEHIND THE BED.



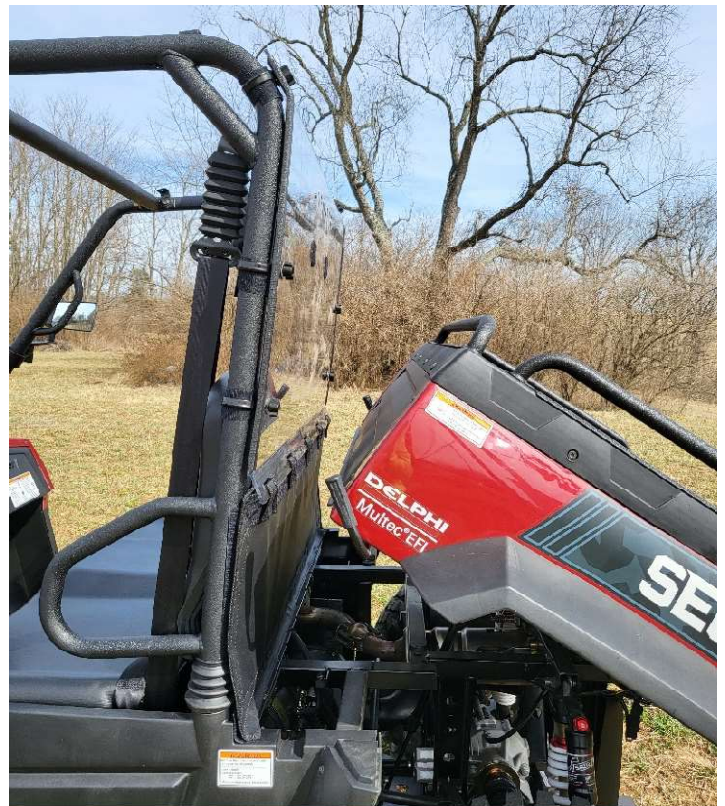
ADHESIVE VELCRO IS PLACED UNDER THE CLAMP TO MAKE THE CLAMP FIT TIGHT, PREVENTING THE BACK PANEL FROM SLIPPING DOWN WHILE RIDING.

STEP 11: Install adhesive Velcro.

STEP 12: Insert tabs on the lower back through the inside of the precut slots in the bottom of your back panel. The tabs will pull through the slots and attach the Velcro sewn on to lower back panel.

STEP 13: Push sewn on Velcro on to adhesive Velcro that you have installed on the UTV.

**INSTALL COMPLETE!**





Periodic cleaning using correct procedures can help to prolong service life. For care and cleaning, it is recommended that the following instructions be adhered to:

## Lexan Cleaning Recommendations

- Gently wash Lexan with a solution of mild soap and lukewarm water, using a soft, grid-free cloth or sponge to loosen any dirt or grime.
- Fresh paint splashes, grease and smeared glazing compounds can be removed easily before drying by rubbing lightly with a soft cloth using petroleum ether (BP65), hexane or heptanes. Afterwards, wash the sheet using mild soap and lukewarm water.
- Scratches and minor abrasions can be minimized by using a mild automobile polish. We suggest that a test be made on a small area of the Lexan sheet with the polish selected and that the polish manufacturer's instructions be followed, prior to using the polish on the entire sheet.
- Finally, thoroughly rinse with clean water to remove any cleaner residue and dry the surface with a soft cloth to prevent water spotting.

## Important Instructions

- Never use abrasive or highly alkaline cleaner on Lexan polycarbonate materials.
- Never use aromatic or halogenated solvents like toluene, benzene, gasoline, acetone or carbon tetrachloride on Lexan polycarbonate materials.
- Use of incompatible cleaning materials with Lexan sheet can cause structural and/or surface damage.
- Contact with harsh solvents such as methyl ethyl ketone (MEK) or hydrochloric acid can result in surface degradation and possible crazing of Lexan sheet.
- Never scrub with brushes, steel wool or other abrasive materials.
- Never use squeegees, razorblades or other sharp instruments to remove deposits or spots.
- Do not clean Lexan polycarbonate in direct sunlight or at high temperatures as this can lead to staining.
- For all mentioned chemicals consult the manufacturer's material safety datasheet (MSDS) for proper safety precautions.