

CFMOTO Z 950 SKID PLATE

Hardware Kit		
Hardware	Description	Qty
	30MM FLANGED BOLT	24
	40MM BOLT	2
	CUP WASHER	26
	SPACERS	26
	PUSH NUT	26
	LARGE FENDER WASHER	2

Front Panel



Center Panel



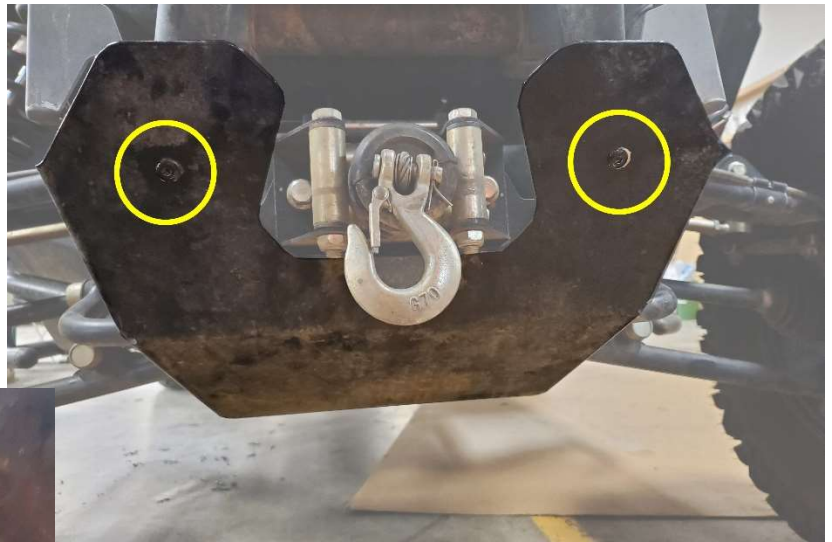
Back Panel



1: REMOVE EXISTING SKID PLATE

2: REMOVE FRONT FENDER PLATE.

Use allen wrench to remove the front factory plate on the bottom front of the Z 950. Then remove the bolts on the back of the front fender plate.



3: Prepare all Panels with the bolt, large washer, spacer and push nuts.

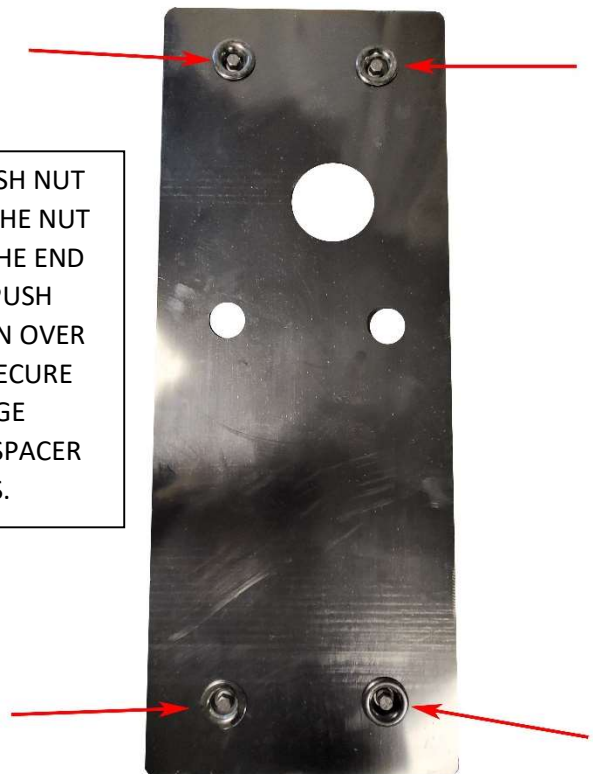
Slide CUP washer over the 30mm bolt and insert the combo through the outside of the front panel. Insert the cup washer/bolt combo through the cut outs. Secure on the inside with a spacer and a push nut. **Do this for all cut out spaces on all panels.**

Cup washer and bolt in the front.

Spacer with push nut on the inside.

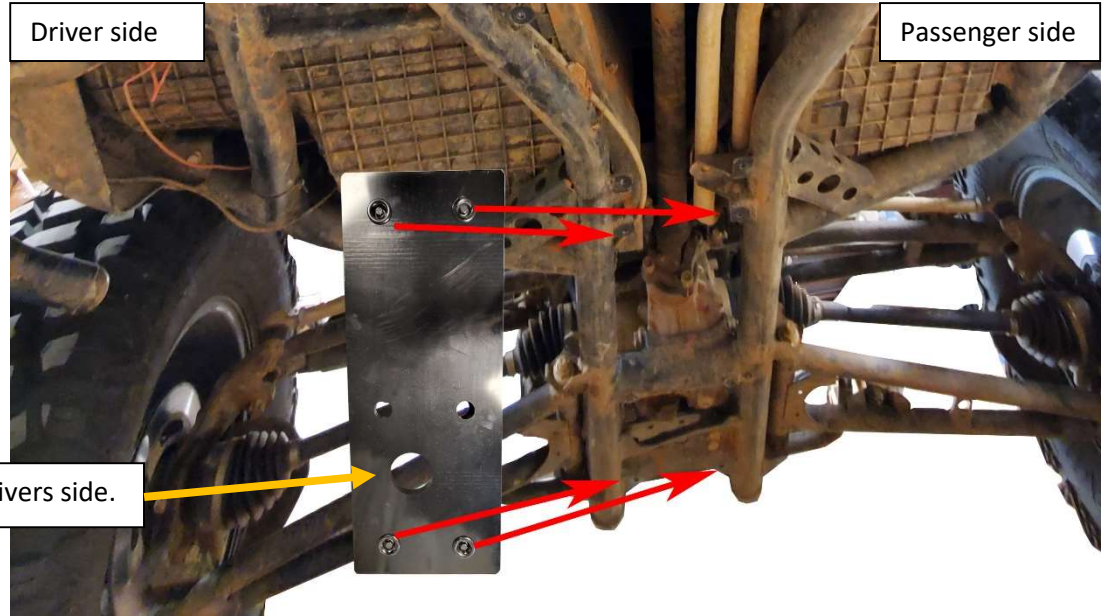


TO INSTALL PUSH NUT SIMPLY PUSH THE NUT DOWN OVER THE END OF THE BOLT. PUSH THE NUT DOWN OVER THE BOLT TO SECURE THE BOLT, LARGE WASHER AND SPACER TO THE PANELS.



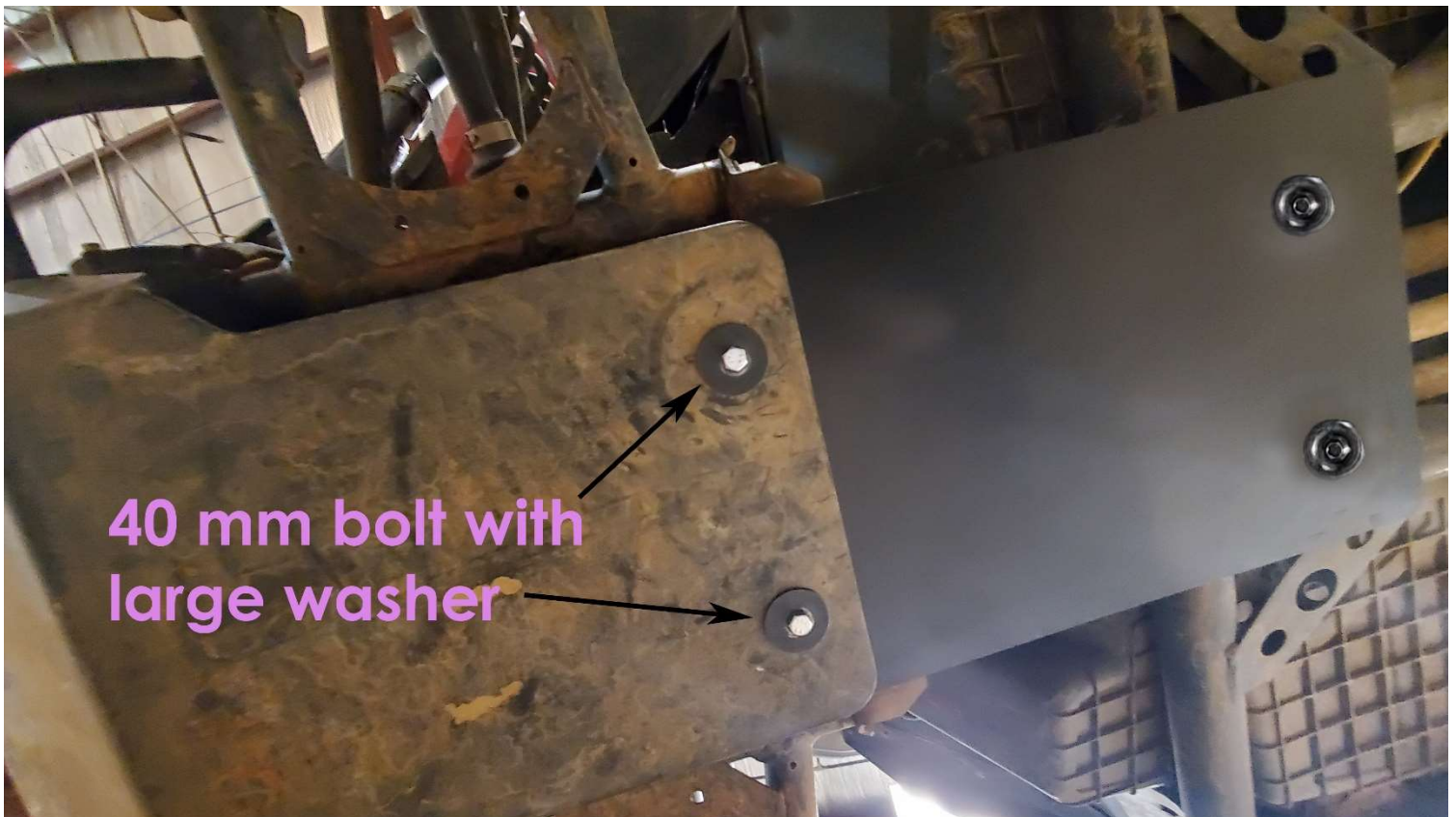
4: INSTALL FRONT PANEL

The spacers and push nut will fit against the frame of the Z 950. The circle in the front panel allows access to the drain spout. Line up the front panel and start the bolts by hand. **Do not tighten this will be your last step.**



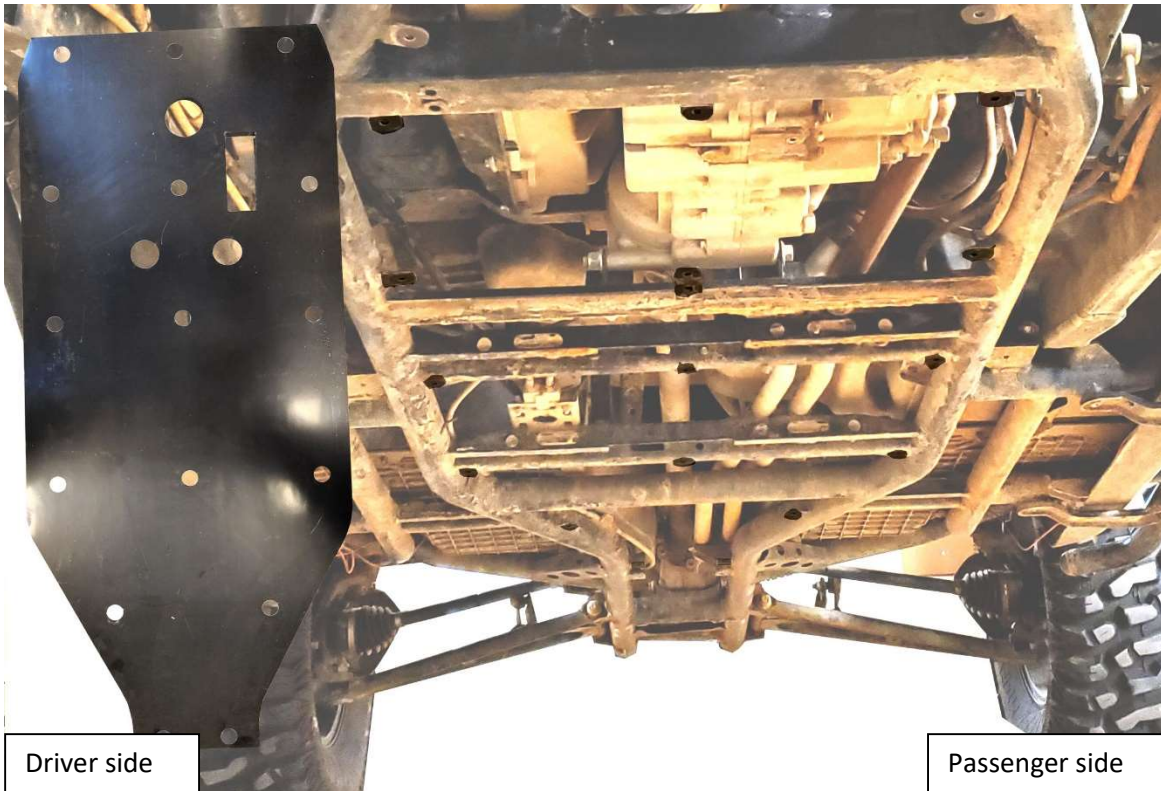
5: REINSTALL THE FRONT FENDER PLATE.

Install allen wrench bolts on the front of the front fender plate. Then use the 40mm bolt with a large washer to attach the back of the front fender plate to the center of the front panel. **Start the bolts by hand only do not tighten.**



6: INSTALL CENTER PANEL

Having help with the center panel will make the work easier, one person to hold the panel and one person to hand start the bolts. You will install the center panel the same way as the front panel, line up the bolts with the factory bolt holes and hand start. **Again do not tighten this will be the last step.**



In the photo above I have highlighted all of the factory placed notches on the Z 950. You will use these notches to connect the center panel to the cage.

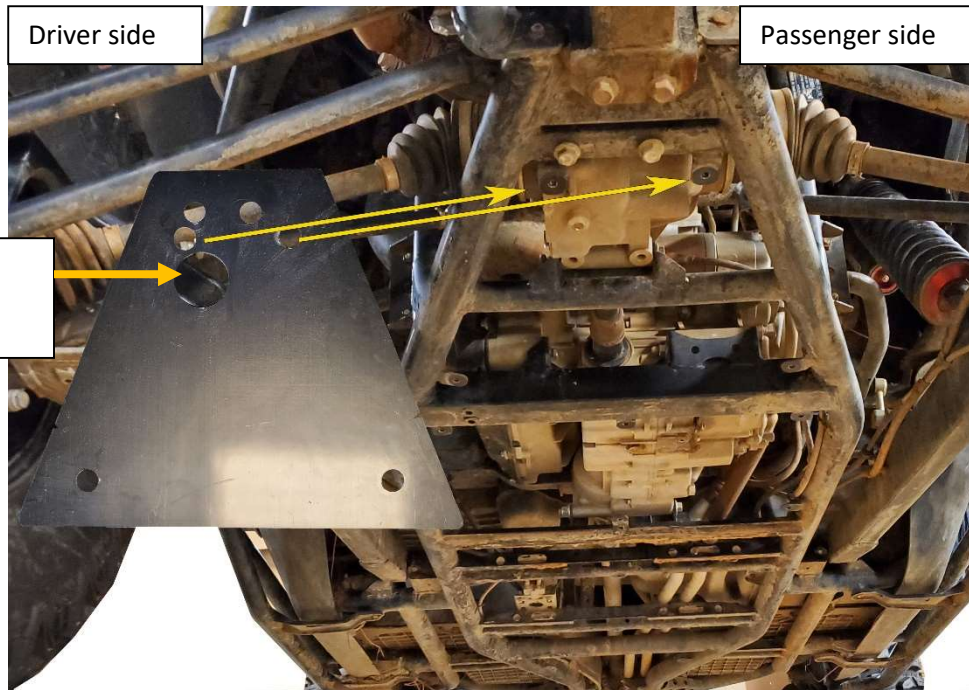


The front of the center panel will set flush against the back of the front panel.

Keep square access cut out to passenger side.

7: INSTALL BACK PANEL

Install the back panel in the same way as the front and center panel. Spacers set against the Z 950s metal cage, hand start only, at this time. The top holes will set over the factory installed bolts in the frame of the machine.



8: TIGHTEN ALL BOLTS