

24W CCT Selectable Black LED Track Light Head

User Manual

01 / WARNING

1. Read ALL product labels and instructions before installing this fixture.
2. To prevent wiring damage or abrasion, DO NOT expose the wiring to edges of sheet metal or other sharp objects.
3. DO NOT make or alter any open holes in an enclosure of wiring or electrical components during the installation.
4. ONLY use this fixture for covered ceiling mounting where ONLY the LED side of the fixture will be exposed to dry environments.
5. ONLY perform the installation after power to the fixture has been disconnected.
6. To reduce the risk of fire and electrical shock, ONLY use this product with the appropriate track system.
7. ONLY use this product with ceiling-mounted tracks.
8. DO NOT install any part of this system (including the track) less than 9.84ft (3m) above the floor.
9. Test the track lamp adaptor for compatibility with the track system BEFORE installing the track light.
10. ONLY use this track light in a single circuit track system.
11. This adaptor ONLY rotates in one direction. DO NOT forcefully rotate the adaptor in the wrong direction or it may damage the device.

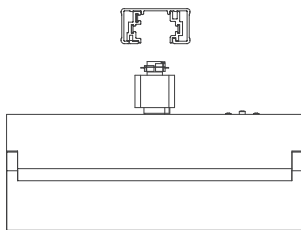
02 / PACKAGE CONTENT

Track light heads × 2

03 / INSTALLATION

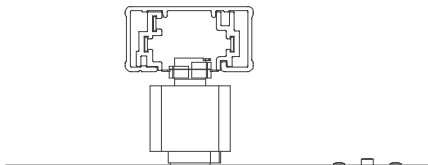
1. Check to make sure that the adaptor is an H type and is compatible with the H track system. (Fig. 1)

Fig. 1



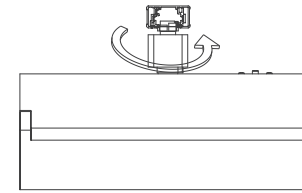
2. Align the locking tabs so that they are parallel with the track's polarity line, then insert the head of the adaptor into the track rail slot. Note the side the grounding pin is facing. (Fig. 2)

Fig. 2



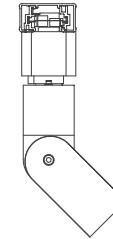
3. Push up on the fixture while holding the adaptor aligned with the track. Then twist the body 90° while pulling down on the adaptor sleeve. Do this until the locking tabs on both sides of the adaptor snap into the track grooves. (Fig. 3)

Fig. 3



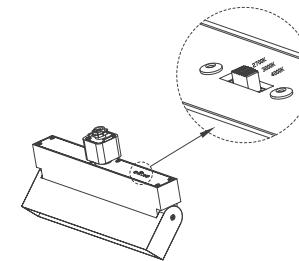
4. Make sure that the grounding pin is touching the grounding conductor. (Fig. 4)

Fig. 4



5. Select the desired color temperature by sliding the switch on the light body. (Fig. 5)

Fig. 5



04 / SPECIFICATIONS

24W CCT Selectable Black LED Track Light Head	
Power	24W
Luminous flux	1300lm
Working temperature	-4°F-104°F
Voltage	100-277V
Beam angle	100°
CRI	>90
Material	Aluminum
Color temperature	2700K/3000K/4000K

05 / WARRANTY

LEONLITE warrants that this product is free from defects in materials and workmanship for a period of 3 years from the day of purchase. If the product has been misused, damaged by accident or in any other way of improper use, this warranty becomes void.