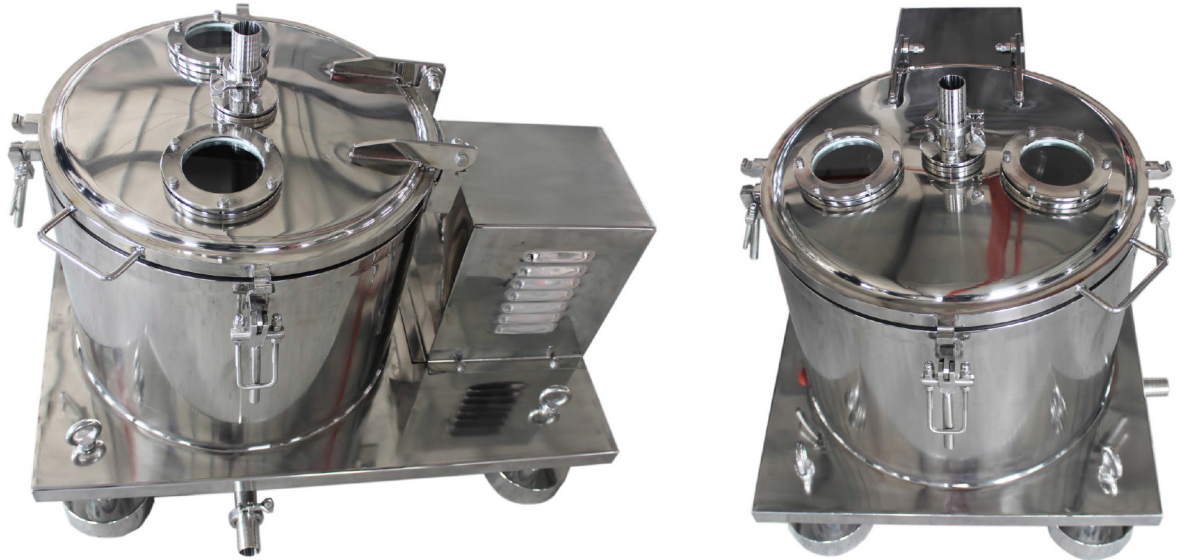


PPTD Series Plate Top Discharge Centrifuge for Cannabis Oil Extraction



Brief Introduction

The PPTD centrifuge is top discharging, hermetic closure type equipment. The material is fed into the drum through the feeding pipe on the hermetic closure casing; under the action of the centrifuge force field, the liquid-phase passes through the filter medium and the discharged out of the machine, while the solid-phase material is retained inside the drum and, after the machine is stopped, the material is discharged from the top. The centrifuge has such features as smooth running, easy & convenient operation as well as conducting feeding, washing and dehydrating under the state of hermetic closure, etc.

Main technical parameters

Type	Basket					Power (kw)	Weight (kg)	Overall size (L × W × H) (mm)
	Diameter (mm)	Volume (L)	Capacity (kg)	Speed (rpm)	G-force			
PPTD-25	450	20	25	1900	910	1.5	250	980 × 650 × 870
PPTD-50	600	40	50	1500	756	3	800	1300 × 880 × 900
PPTD-135	800	100	135	1200	645	5.5	1300	1800 × 1200 × 1140
PPTD-200	1000	150	200	1000	560	7.5	2000	2050 × 1500 × 1220
PPTD-300	1200	250	300	800	431	11	2500	2350 × 1650 × 1370

Type	Capacity for dry hemp (kgs)
PPTD-25	~8/batch
PPTD-50	~15/batch
PPTD-135	~30/batch
PPTD-200	~45/batch
PPTD-300	~60/batch

Standard features

- 304 and 316L Sanitary Stainless Steel Construction
- Low temperature rating: -40c
- Reinforced Sight Glass
- Bi-Directional Agitation
- Auto/Manual Controls
- Digital HMI Interface
- Variable Speed Control
- Easy Material Loading/ Unloading
- Heavy-Duty Spin Drying
- No foundation required

Process Overview

- Operator fills filter bag with milled plant material and places it in the machine.
- The centrifuge is then flooded, and bi-directional agitated for full target compound removal.
- After the wash, the plant material undergoes a medium duty spin dry till high speed spin dry to remove the liquid as much as possible.
- The alcohol wash is then collected to some container for further processing

Working steps

1. **System loading:** A pre-loaded closed filter bag is placed into the basket
2. **Program Menu:** The 'Spray Wash' or 'Agitation Wash' program is selected on the HMI where the RPM and cycle times are set to the operator's specifications.
3. **Fill:** Alcohol is connected from source tank into the centrifuge.
4. **The Wash cycle:** The plant material undergoes an agitated wash with a set number of bi-directional agitations
5. **System Draining:** When the wash cycle is complete, the outlet valve is manually opened and the liquid drained. The alcohol wash is pumped to a properly rated storage reservoir for further processing.
6. **Spin Dry Cycle:** The 'Spin Dry' menu is selected on the HMI and the drying cycle is started. The wet plant solids are spun dry of the remaining alcohol mixture within.
7. **System Unloading:** Upon completion of the 'Dry cycle', centrifuge is unloaded by taking the filter bag out from the basket.
8. **Repeat Process.**

Collocation

1. Ex proof motor
2. PTFE Seals
3. Touch screen panel with PLC program
4. Inverter control box
5. On spot ex button
6. Closed type filter bags
7. Tri clamp fittings for feed and drain port

Spot pictures





Sight glass



Lock



Puller



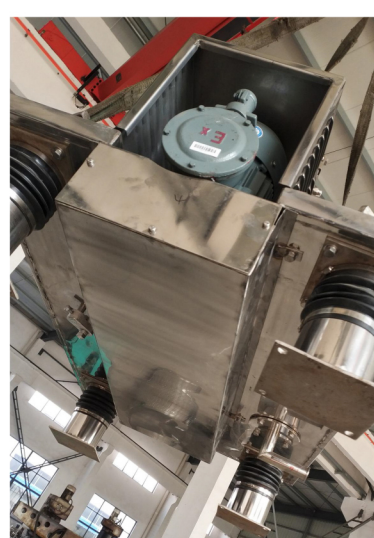
Lug



Drain port



Leg





Packaging



POLY WOOD



POLY WOOD



POLY WOOD



SOLID WOOD-FUMIGATED WITH IPPC MARK

■ WOODEN CASES MEET INTERNATIONAL PACKING STANDARD

Our Products



Algae Centrifuge
www.algaecentrifuge.com
Tel: 916-550-9541

