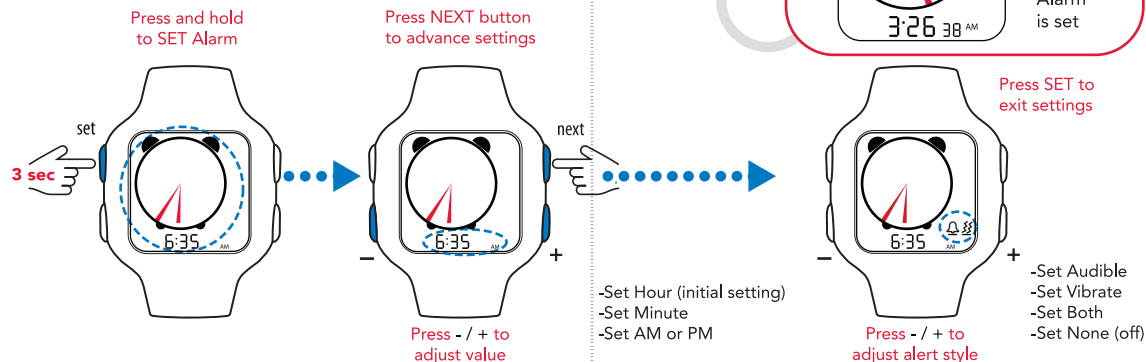
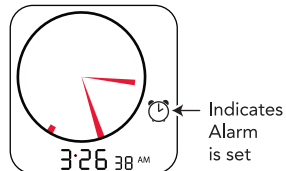


ALARM MODE

The "time of day alarm" is a 12- or 24- hour format. An Alert must be selected to activate Alarm.



Clock mode view



Time Timer Watch Plus®

User Guide

TIME TIMER®

How it works:

The new Time Timer Watch Plus® uses a red disk to visually depict how much time remains. As time elapses clockwise, the disk gradually disappears, helping you see and manage time more effectively.

Visit: timetimer.com to view our instructional video.

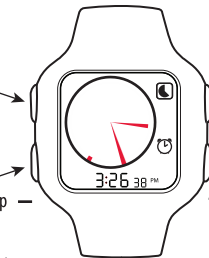
INSTRUCTION KEY

Buttons used for...

BACKLIGHT & watch SET function



START | STOP Timer & adjust (-) setting



change watch MODE or switch to NEXT setting



set "ALERT" style & adjust (+) setting



LEGEND



BATTERY CHANGE

The battery (Type CR2032) is fitted at the time of manufacture and should be replaced at the first sign of low power (i.e. no light or dim display). We recommend using a trained jeweler or watch specialist to ensure that the LCD and the water-resistant seal are properly aligned and not damaged. Because of the visual nature of the Timer, its illumination brightness and the vibration alert option, battery life is estimated at 8 months; if used a minimum of 4 times per day with both vibration and audible alerts fully set. Replacing the battery will automatically reset the Watch Plus® to the factory default settings.

WARRANTY

Every Time Timer Watch Plus® (R) comes with a 1-year warranty that covers all manufacturing and material defects. It does not cover the battery, nor damage caused by abuse, misuse or common wear and tear. Designed and engineered in the USA. Made in China. Patent protected.

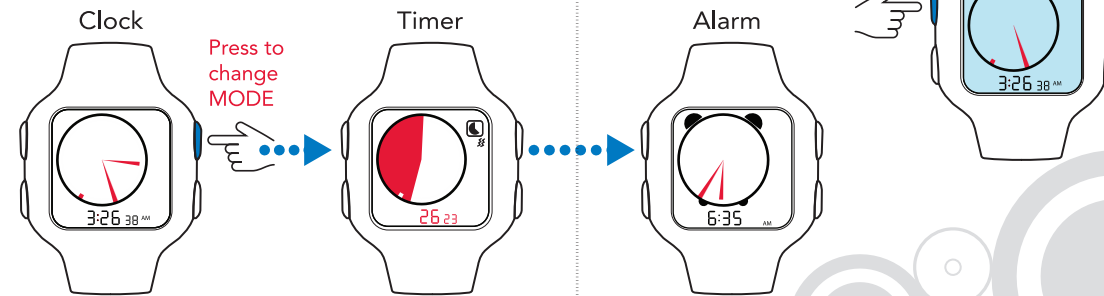
Please contact Time Timer LLC by email (support@timetimer.com) or phone (877-771-TIME).

Watch Default settings:

Clock - Active state (12 hr)
 Timer - 15 min (Original 60 Minute Timer)
 Alarm - 8:00 AM (no alert)

MODE

The Watch Plus® has three modes of operation – Clock, Timer and Alarm. Each mode has its own unique look. To change modes, press the MODE button (upper right).

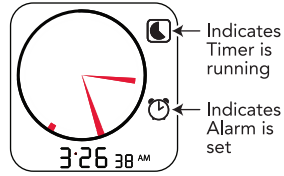


GETTING STARTED – General setting instructions: To set a Watch Plus® in any mode, long press the SET button (top left) for at least 3 seconds. The first value will begin to flash. Once the value is set to your liking, press the NEXT button (top right) to the next flashing value. Continue this process until complete. To exit at any time, press the SET button.

CLOCK MODE

The Clock uses a traditional analog watch face, along with a digital display to show the current time of day. If a Timer is running and/or an Alarm has been set, a unique icon(s) will display on the right side of the Clock, to let you know they are running. Time can be viewed in 12- or 24- hour format.

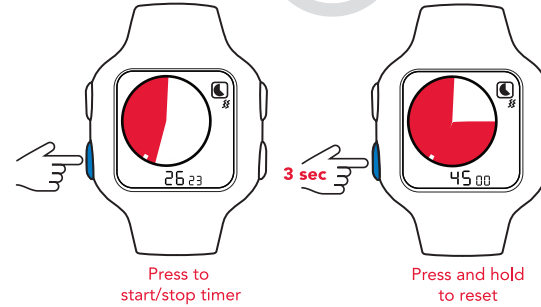
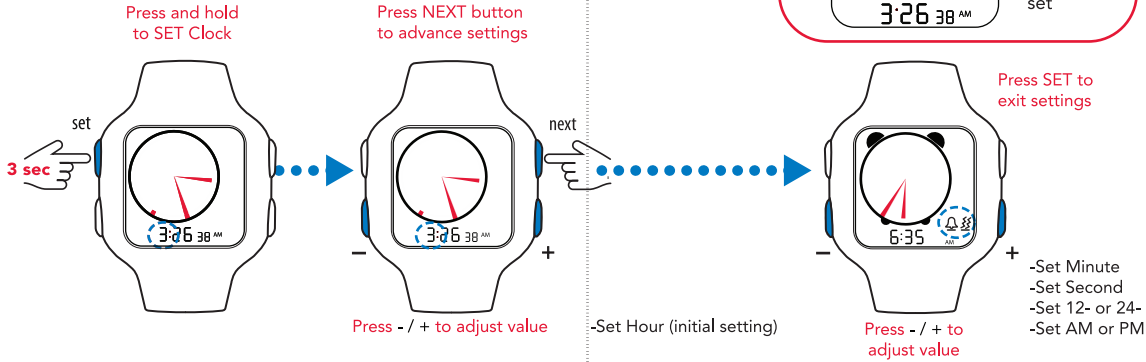
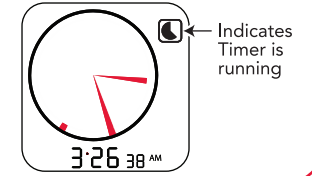
Clock mode view



...TIMER MODE

Run Timer

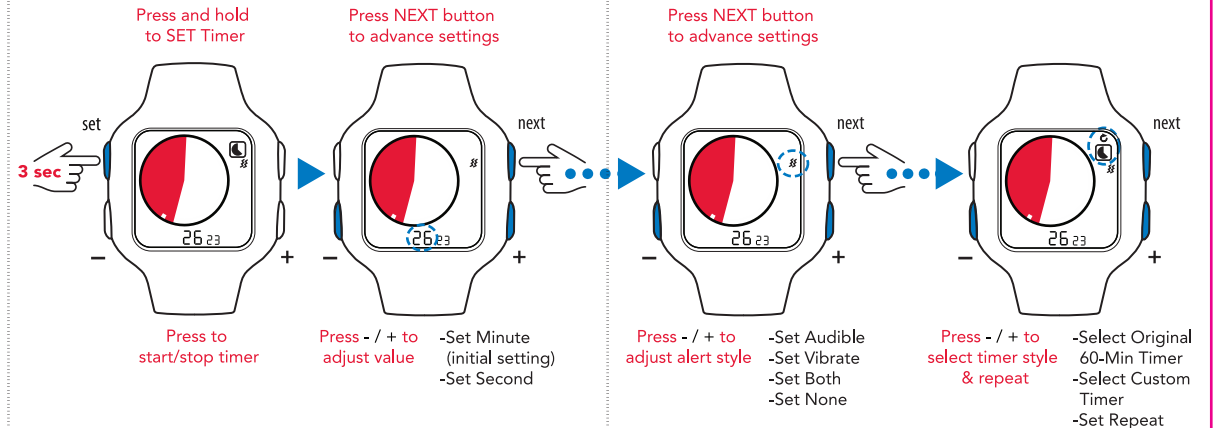
Clock mode view



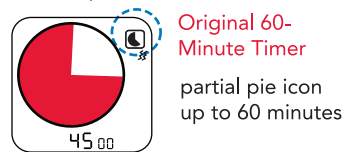
TIMER MODE

The new Watch Plus® includes two visual timer options: 1) Original 60-Minute Timer, in which time is displayed as a fractional unit up to 60-minutes; or, 2) Custom Timer, in which a full disk represents any value of time from 1 min. to 99 hrs. 59 min. Icons appear in Clock mode if a Timer is running. A digital display of time is below the Timer disk. Both displays diminish as time elapses until none of the red disk is visible and digits read "00:00." To SET a Timer, an active Timer must first be stopped.

SET Original 60-Minute Timer



Timer Options



To set the Custom Timer: follow the same steps

Note: Custom Timer includes hours and minutes, and is identified by the full pie icon