

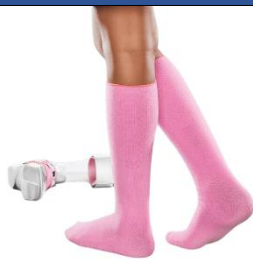
Knit-Rite Seamless AFO, KAFO & Orthotic Size Chart

KnitRite AFO Interface Socks

To select the correct size, measure your leg from the tip of the toe to the top of the AFO / KAFO. Select the sock which is closest to that length.

There is no heel pocket, so the shoe size doesn't matter. The sock is like a long stretchy tube that will mould to the contours of the foot and leg. Measurements are the unstretched socks.

SmartKnit AFO Interface Seamless Socks



Size	Width	Length
Infant Small AFO	3.5cm	18cm
Infant AFO	5cm	23cm
Child Small AFO	5.5cm	28cm
Child AFO	6.5cm	36cm
Child Extra Long AFO	7.5cm	51cm
Adult Small AFO	7.5cm	46cm
Adult Regular AFO	9cm	51cm

Patterned AFO Core-Spun Interface Socks



Size	Width	Length
Child Small	5.5cm	28cm
Child Regular	6.5cm	36cm
Child Extra-Long	7cm	51cm
Adult Small	7.5cm	46cm
Adult Regular	9cm	51cm

Knit-Rite Seamless AFO, KAFO & Orthotic Size Chart

KnitRite AFO & KAFO Interface Socks

To select the correct size, measure your leg from the tip of the toe to the top of the AFO / KAFO. Select the sock which is closest to that length.

There is no heel pocket, so the shoe size doesn't matter. The sock is like a long stretchy tube that will mould to the contours of the foot and leg. Measurements are the unstretched socks.

SmartKnit Big Toe AFO Seamless Socks



Size	Width	Length
Infant	5cm	23cm
Child Small	5.5cm	28cm
Child Regular	6.5cm	36cm
Adult Small	8cm	36cm
Adult Regular	9cm	51cm

SmartKnit KAFO Interface Seamless Socks



Size	Width	Length
Child XX-Long KAFO	6.5cm	46cm
Adult Narrow KAFO	10 x 6.5cm	61cm
Adult Regular KAFO	15 x 9cm	71cm

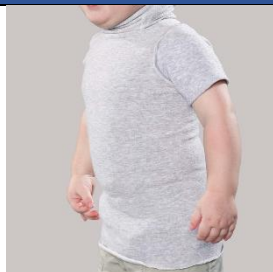
Knit-Rite Seamless AFO, KAFO & Orthotic Size Chart

Torso Interfaces

Outstanding stretch of over 150% allows the fit to be virtually wrinkle-free.

Style options include: **axilla flaps** that protect delicate underarm skin from rubbing and abrasion. Another style option is the weight of the garment. The **original thickness** provides additional protective comfort, while **lightweight thickness** is cooler to wear.

Torso Interface® Turtleneck with Sleeves



Size	Width (unstretched)	Length	Fits Circumference
X-Small	10cm	30cm	25-30cm
Small	15cm	35cm	35-45cm
Medium	20cm	40cm	45-60cm

Torso Interface® Without Straps



Size	Width (unstretched)	Length	Fits Circumference
Small	15cm	20cm	35-45cm
Medium	20cm	40cm	45-60cm
Medium Long	20cm	50cm	45-60cm
Large	25cm	50cm	55-75cm
Large Long	25cm	60cm	55-75cm
X-Large	30cm	60cm	66-95cm
KS	35cm	60cm	76-122cm

Torso Interface® Crew Neck: With Sleeves



Size	Width (unstretched)	Length	Fits Circumference
Small	15cm	35cm	35-45cm
Medium	20cm	40cm	45-60cm
Medium Long	20cm	45cm	45-60cm
Large	25cm	50cm	55-75cm
Large Long	25cm	60cm	55-75cm
X-Large	30cm	60cm	66-95cm
X-Large Long	30cm	71cm	66-95cm

Knit-Rite Seamless AFO, KAFO & Orthotic Size Chart

Standard Torso Interfaces

Outstanding stretch of over 150% allows the fit to be virtually wrinkle-free.

Style options include: **axilla flaps** that protect delicate underarm skin from rubbing and abrasion. Another style option is the weight of the garment. The **original thickness** provides additional protective comfort, while **lightweight thickness** is cooler to wear.

Torso Interface® Crew Neck



Size	Width (unstretched)	Length	Fits Circumference
X-Small	10cm	30cm	25-30cm
Small	15cm	35cm	35-45cm
Medium	20cm	40cm	45-60cm
Medium Long	20cm	56cm	45-60cm
Large	25cm	50cm	55-75cm
Large Long	25cm	60cm	55-75cm
X-Large	30cm	60cm	66-95cm
KS	35cm	60cm	76-122cm
KX	35cm	71cm	76-122cm

Torso Interface® V Neck



Size	Width (unstretched)	Length	Fits Circumference
Small	15cm	35cm	35-45cm
Medium	20cm	40cm	45-60cm
Medium Long	20cm	45cm	45-60cm
Large	25cm	50cm	55-75cm
Large Long	25cm	60cm	55-75cm
X-Large	30cm	60cm	66-95cm
KS	35cm	60cm	76-122cm

Torso Interface® Lightweight V Neck



Size	Width (unstretched)	Length	Fits Circumference
Small	15cm	40cm	41-69cm
Medium	20cm	45cm	56-94cm
Medium Long	20cm	56cm	56-94cm
Large	25cm	50cm	76-127cm
Large Long	25cm	60cm	76-127cm
X-Large	30cm	60cm	92-153cm

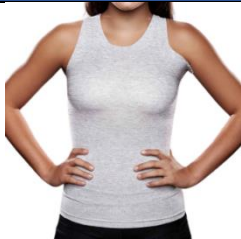
Knit-Rite Seamless AFO, KAFO & Orthotic Size Chart

Left Axilla Torso Interfaces

Outstanding stretch of over 150% allows the fit to be virtually wrinkle-free.

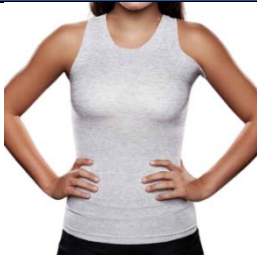
Style options include: **axilla flaps** that protect delicate underarm skin from rubbing and abrasion. Another style option is the weight of the garment. The **original thickness** provides additional protective comfort, while **lightweight thickness** is cooler to wear.

Torso Interface® V Neck: Left Axilla Flap



Size	Width (unstretched)	Length	Fits Circumference
Small	15cm	35cm	35-45cm
Medium	20cm	40cm	45-60cm
Large	25cm	50cm	55-75cm
Large Long	25cm	60cm	55-75cm
X-Large	30cm	60cm	66-95cm

Torso Interface® Lightweight V Neck: Left Axilla Flap



Size	Width (unstretched)	Length	Fits Circumference
Small	15cm	40cm	41-69cm
Medium	20cm	45cm	56-94cm
Medium Long	20cm	56cm	56-94cm
Large	25cm	50cm	76-127cm
Large Long	25cm	60cm	76-127cm
X-Large	30cm	60cm	92-153cm

Knit-Rite Seamless AFO, KAFO & Orthotic Size Chart

Double Axilla Flap Torso Interfaces

Outstanding stretch of over 150% allows the fit to be virtually wrinkle-free.

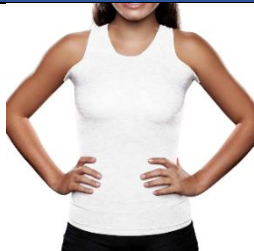
Style options include: **axilla flaps** that protect delicate underarm skin from rubbing and abrasion. Another style option is the weight of the garment. The **original thickness** provides additional protective comfort, while **lightweight thickness** is cooler to wear.

Torso Interface® V Neck: Double Axilla Flaps



Size	Width (unstretched)	Length	Fits Circumference
Small	15cm	35cm	35-45cm
Medium	20cm	40cm	45-60cm
Medium Long	20cm	45cm	45-60cm
Large	25cm	50cm	55-75cm
Large Long	25cm	60cm	55-75cm
X-Large	30cm	60cm	76-122cm

Torso Interface® Lightweight V Neck: Double Axilla Flaps



Size	Width (unstretched)	Length	Fits Circumference
Small	15cm	40cm	41-69cm
Medium	20cm	45cm	56-94cm
Medium Long	20cm	56cm	56-94cm
Large	25cm	50cm	76-127cm
Large Long	25cm	60cm	76-127cm
X-Large	30cm	60cm	92-153cm

Torso Interface® Crew Neck: Double Axilla Flaps



Size	Width (unstretched)	Length	Fits Circumference
Small	15cm	35cm	35-45cm
Medium	20cm	40cm	45-60cm
Medium Long	20cm	56cm	45-60cm
Large	25cm	50cm	55-75cm
Large Long	25cm	60cm	55-75cm
X-Large	30cm	60cm	66-95cm