

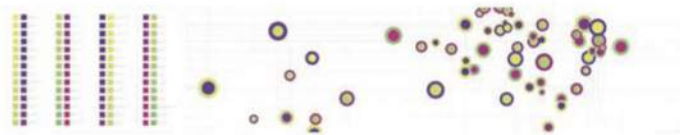
Printmaking can be a way of focusing and distilling ideas and this comes across very much in Bridget Jones's 'Notation', and Rachael Clewlow's '127.5 Miles Walked (Newcastle)' where the artists have used journeys and places as the subject matter of their prints.



This 'sense of place' is further explored through a series of specially commissioned films by Alan Fentiman which take the viewer on a journey into the private studios of the seven represented artists. Printmaking isn't just about 'how' artworks are made; it's also about the all-important 'why' too and the films successfully capture the artists talking freely about their motivations for making prints and the influence of printmaking in their practice.



Top to bottom: Bridget Jones, Notation, Linocut & Letterpress; Katherine Jones, The Belly Pot, Etching & Block print



Rachael Clewlow, Thames OS, Digital Print

GLOSSARY

INCLUDES WORK BY:

STEPHEN CHAMBERS
RACHAEL CLEWLOW
TOM HAMMICK
BRIDGET JONES
KATHERINE JONES
JULIAN MEREDITH
HILARY PAYNTER

Watch the films online www.northernprint.org.uk

Contact Northern Print to find out about hiring this exhibition or other printmaking exhibitions enquiry@northernprint.org.uk

visit www.northernprint.org.uk to find out more about collecting original prints

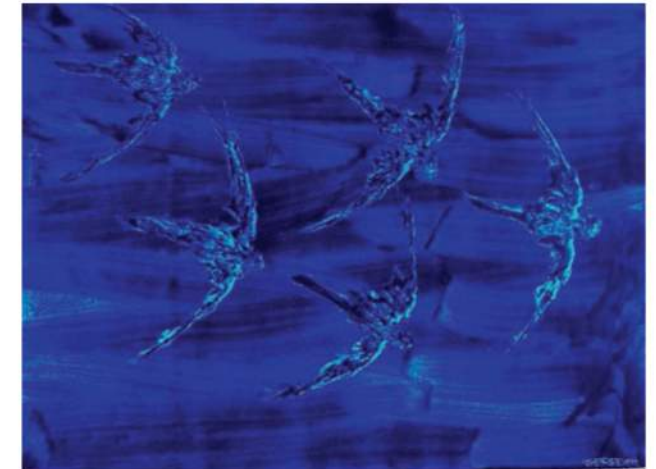
Come and see us at Northern Print, you can visit the gallery and find out more about learning printmaking or using our studio

Glossary is a touring exhibition funded by Arts Council England's Strategic Touring Fund. Northern Print, Stepney Bank, Newcastle upon Tyne, NE1 2NP. 0191 261 7000. enquiry@northernprint.org.uk. Registered charity number 1149872.

GLOSSARY

HOW AND WHY ARTISTS MAKE PRINTS

A LOT OF PEOPLE THINK THAT PRINTMAKING IS ABOUT REPRODUCTIONS. NOTHING COULD BE FURTHER FROM THE TRUTH. EACH PRINT IN GLOSSARY IS AN ORIGINAL; THAT IS TO SAY IT DOESN'T EXIST IN ANY OTHER FORM AND WAS CONCEIVED AND MADE PURELY AS A PRINT.



A Northern Print touring exhibition showcasing the best contemporary printmaking

Stephen Chambers / Rachael Clewlow / Tom Hammick
Bridget Jones / Katherine Jones / Julian Meredith / Hilary Paynter

Julian Meredith, Swifts (The Scream), Direct print



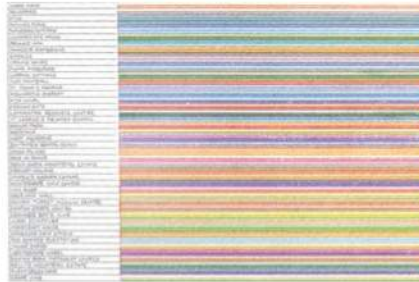
GLOSSARY

HOW AND WHY ARTISTS MAKE PRINTS

GLOSSARY BRINGS TOGETHER TWELVE ORIGINAL PRINTS, EACH MADE USING A DIFFERENT PRINTMAKING PROCESS FROM POTATO PRINTING TO DIGITAL AND CHOSEN BECAUSE IT EXPRESSES THE FUNDAMENTAL AND INTRINSIC QUALITIES OF THAT PARTICULAR METHOD IN TUNE WITH THE ARTISTS' IDEAS. EACH PRINT IN GLOSSARY SINGS OUT WITH A CLEAR VOICE AND A SENSE THAT THE ARTISTS' IDEAS COULD NOT HAVE BEEN EXPRESSED IN ANY OTHER WAY.

Stephen Chambers, *Heaven on Earth*, Potato Print with gold leaf

Stephen Chambers' 'Double-Stamping', along with Rachael Clewlow's '127.5 Miles Walked (Newcastle)' are examples of collaborative printmaking, whereby the artist works with a printmaker to create the final work by bringing together the artists' ideas with the technical expertise of a printer.



In contrast, Katherine Jones is first and foremost a printmaker who explores and resolves her ideas through the actual processes she uses; in the case of 'Glossary' her print 'A Delimitation of Stripes' uses collagraph and block printing.



Top to bottom: Stephen Chambers, *Double Stamping*, Lithograph; Rachael Clewlow, *127.5 Miles Walked (Newcastle)*, Screenprint - detail; Katherine Jones, *A Delimitation of Stripes*, Collagraph & Block print



Tom Hammick, an accomplished painter and prolific and passionate printmaker, is represented by two works; a drypoint and a monoprint. These two prints both use very direct, immediate print processes that relate very closely to painting and drawing, a working relationship Hammick has often talked about.



A number of the works use variations of relief printing processes. The diversity of approach, working methods and results are plain to see, with Hilary Paynter's intricately fine wood-engraving that could be contained within the pages of a book to Julian Meredith's large-scale woodcut '3 Ps in a Pod', which uses the grain of the wood to suggest the movement of water.



Top to bottom: Tom Hammick, *Edge*, Drypoint; Tom Hammick, *Seagull*, Monoprint; Hilary Paynter, *Spetchells - Gathering Places*, Wood engraving; Julian Meredith, *3 Ps in a Pod*, Woodcut