

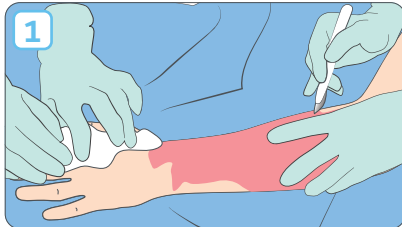
+ BIOBRANE[®] Temporary Biosynthetic Wound Dressing

Smith+Nephew

Application guide

BIOBRANE Dressing has been used successfully on the partial-thickness burns of a patient with 85% Total Body Surface Area burn (TBSA).¹

BIOBRANE Dressing preparation



Clean and debride wound in accordance with local clinical protocols

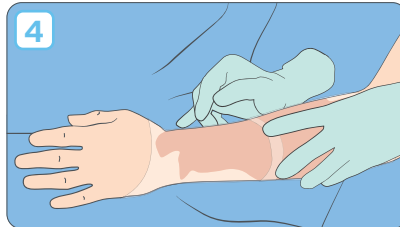
- BIOBRANE Dressing should be applied to freshly cleaned or debrided tissue
- Debridement techniques such as VERSAJET[®] Hydrosurgery System on a low setting may be helpful
- Consider analgesia or anesthesia requirements to ensure correct levels of debridement

2 Establish hemostasis prior to application of BIOBRANE Dressing

3 Ensure that the depth of the injury is assessed correctly

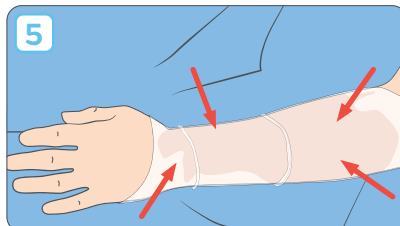
- Scanning Laser Doppler techniques may be helpful

BIOBRANE Dressing application



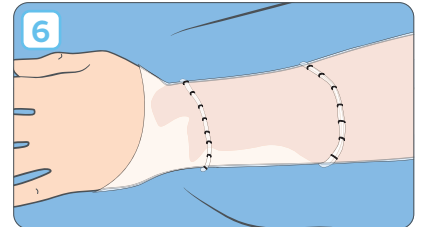
Apply BIOBRANE Dressing with fabric (dull) side down (against the wound) and the shiny silicone side facing upwards. (Two surfaces of the upper side will adhere if placed together.)

- A label is applied to the upper side to ensure correct application
- Remove label when BIOBRANE Dressing is in place



BIOBRANE Dressing should be applied under slight tension, so that it still fits tightly to the wound when post-injury swelling has subsided

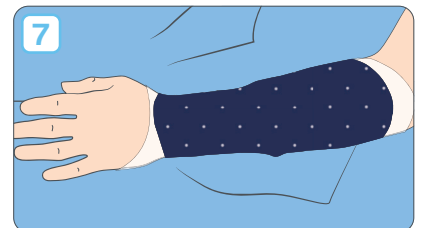
BIOBRANE Dressing securing



The use of staples or tape to affix BIOBRANE Dressing to itself may be a useful technique

Ensure resulting overlap or seams are not positioned against the wound

Secondary dressing

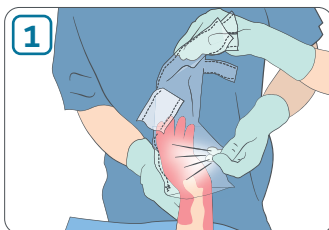


An absorbent dressing or bandage should be applied over BIOBRANE Dressing (for 24 to 36 hours) to manage exudate

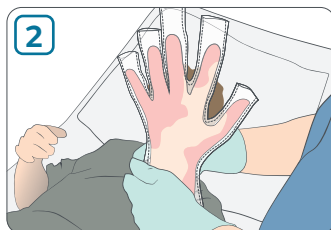
Ensure application is not restricting breathing on trunk application or blood flow in limbs

- Secondary antimicrobial dressings may be applied in areas at risk of contamination

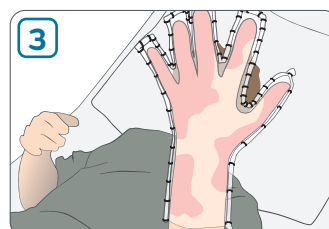
BIOBRANE Glove application



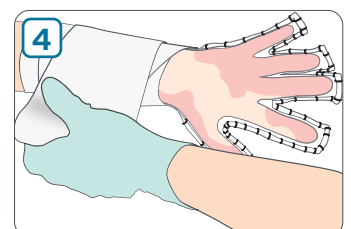
Immerse the appropriately-sized glove in sterile water, and then slip over the hand to obtain a uniform wrinkle-free fit



Do not turn any part of the glove inside out.
(Fitting the glove, as received, over the hand/fingers automatically places the fabric (dull) side down against the wound surface.)



Under slight tension, immobilise the glove using staples, tapes, sutures or skin closure strips



Wrap the hand and each finger with a dry gauze dressing or other splinting device to hold the glove firmly in contact with the entire wound surface

Minimize hand movement until adherence occurs (24 to 36 hours post-application)

Post-application instructions

Up to 24 hours

- Do not remove the outer dressing
- Do not get the dressing wet
- Minimize movement of the burned area until adherence occurs

24-36 hours

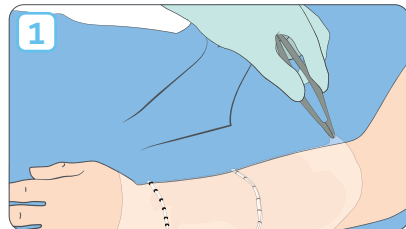
- 1 Remove the outer dressing down to BIOBRANE® Dressing/Glove and observe for the following:

- 1.1 If BIOBRANE Dressing/Glove is adhered and no fluid accumulation is present—rewrap the gauze dressing for protection.
- 1.2 If areas of BIOBRANE Dressing/Glove are loose, but the underlying tissue is still viable—aspirate or roll out any non-purulent fluid collection, rewrap with a gauze dressing and observe in 24 hours for adherence.
- 1.3 If BIOBRANE Dressing/Glove is loose and there is purulent draining underneath, remove the purulent non-adherent areas and use conventional topical antimicrobial therapy to reduce bacterial contamination.

48-72 hours

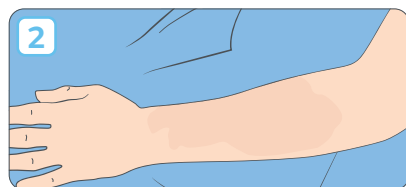
- 2 Remove the outer dressing down to BIOBRANE Dressing/Glove and check for adherence...
 - If adhered → the outer dressing need not be reapplied
 - If not adhered → treat as previously described
- 3 Observe daily for bubbles and purulence and treat as described in step 2.
 - 3.1 If signs of infection are present, remove the BIOBRANE Dressing from the area of infection and treat as described in step 1.3.
- 4 Once BIOBRANE Dressing/Glove is adhered, patients can be bathed according to local clinical protocols, and movement of the burned area can be initiated.

BIOBRANE Dressing/Glove removal: 7-14 days



When to remove BIOBRANE Dressing/Glove:

- When the underlying tissue is healed (typically after 7 to 14 days)
- The dressing should be dry and loose in places and the patient may report itching
- Do not leave on the wound for more than 21 days
- If areas of the dressing are loose, they can be trimmed away until the entire wound has healed



How to remove BIOBRANE Dressing/Glove:

- Start at one corner and pull gently
- BIOBRANE Dressing will peel off from the healed tissue relatively easily (The application of a petroleum-based ointment, or soaking prior to removal, facilitates the removal process.)

Caution:

- If bleeding occurs during the removal, or if the patient complains of excessive pain – stop and wait for 1 to 2 additional days
- Forced removal may result in re-injury
- If BIOBRANE Dressing becomes adhered to a partial thickness wound that has progressed to a full-thickness wound, it should be removed in the operating room

Products may not be available in all markets because product availability is subject to the regulatory and/or medical practices in individual markets. Please contact your Smith+Nephew representative or distributor if you have questions about the availability of Smith+Nephew products in your area. For detailed product information, including indications for use, contraindications, warnings, and precautions, please consult the product's Instructions for Use (IFU) prior to use.

The wound presented in the guide is artificially created for demonstration purposes only.