

## ALPHACHOCKS<sup>®</sup> MINI

Meet our lightest series yet in a vibrant orange hue. Presenting a very simple foldable technique to safely and easily apply and remove the chock from your aircraft or helicopter wheel. It has anti-slip material on each side to further secure the aircraft but also safeguard your polyurethane and epoxy hanger floors. Additionally, it is ideal for aircrafts with wheel fairings.



### MATERIAL

Made of 6082 T6 forged aluminum. This procedure provides impressive strength maintaining minimal weight.

### FEATURES

- Weighs only 0.3kg (0.7lbs);
- For aircrafts up to 20t (45,000lbs) MTOW;
- For wheel diameter up to 50cm (20in);
- The foldable technic makes sure the chock never gets stock under the wheel or skids away;
- Made out of a 100% recyclable material.



### DIMENSIONS

- |           |                             |                               |
|-----------|-----------------------------|-------------------------------|
| • Length: | open position 14cm (5.5in)  | folded position 14cm (5.5in)  |
| • Height: | open position 6.5cm (2.5in) | folded position 3.5cm (1.3in) |
| • Width:  | open position 10cm (4in)    | folded position 10cm (4in)    |



## HOW TO USE YOUR **ALPHACHOCKS**<sup>®</sup> MINI:

The mechanism is very simple. ALPHACHOCKS<sup>®</sup> MINI is composed by three moving parts. All it takes is to fold the bottom part (the left side on the first pictures below) towards the part with the handles and fit the slots into the holes. This way it will be locked and holds very strongly, place it under your wheel. To remove it, just pull the handle back and fold it to safely store it in the soft-case.

1



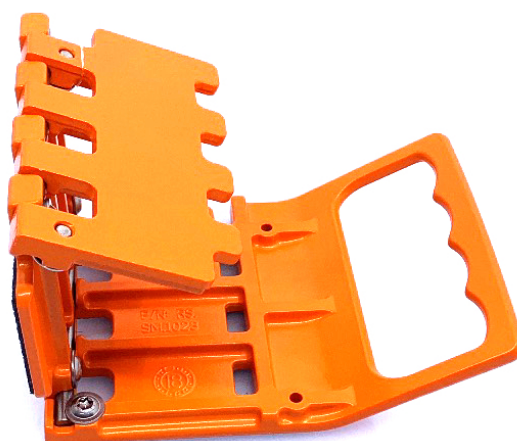
2



3



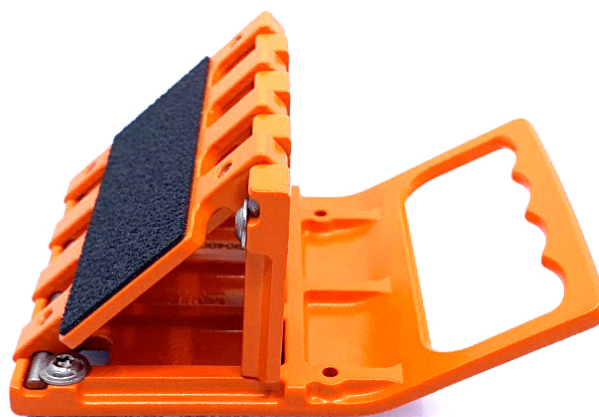
4



5



6



SWISS MADE  
PATENTED

**ALPHA**<sup>®</sup>  
CHOCKS

## SETS AVAILABLE

- Set of 2 chocks with a handy soft-case;
- Set of 6 chocks with its soft-suitcase.



## STORING DIMENSIONS

- A set of 2 ALPHACHOCKS® MINI including the soft-case:  
L15cm x H6cm x W11cm (6in x 2,5in x 4,3in) weight 0,8kg (1.8lbs)
- A set of 6 ALPHACHOCKS® MINI including the soft-case:  
L26cm x H17cm x W12cm (10.3in x 6.7in x 4.8in) weight 2.2kg (4.9lbs)



## CUSTOMIZATIONS

We offer different options giving our customers a great range of customization opportunities.

## ENGRAVING

1. Carbon engraving- laser (smooth black) of your company logo or aircraft registration number;
2. Aluminum engraving – in metal (deep aluminum) laser engraving of your company logo or aircraft registration number;
3. Aluminum engraving - colored (deep aluminum) laser engraving of your company logo or aircraft registration number in the color of your choice.

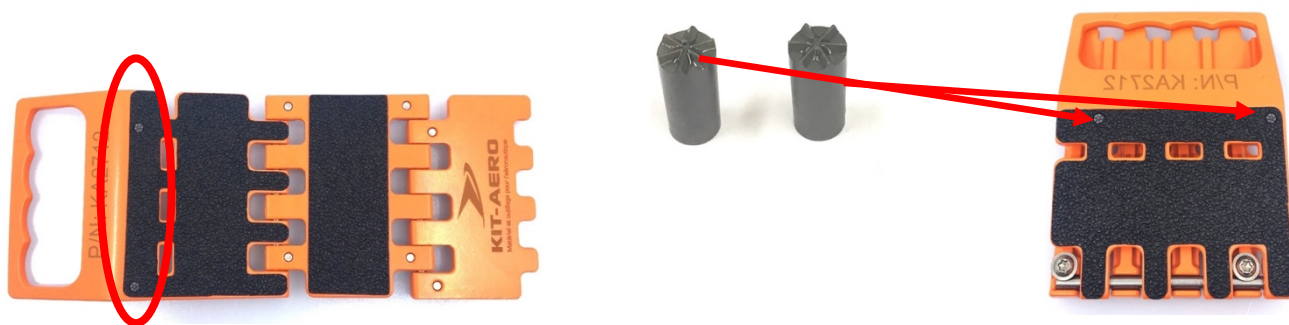


SWISS MADE  
PATENTED

**ALPHA**<sup>®</sup>  
CHOCKS

## SPIKES

2 Carbide Spikes can be inserted in the bottom side of the MINI ensuring ultimate grip to the tarmac while also protecting your chock from damage.



## CUSTOM COLOR

ALPHACHOCKS® offers a series of RAL colors to customize the chocks as wished by our customer.

Our standard ALPHACHOCKS® color is orange.



## CUSTOMISED STITCHING ON YOUR SOFT-CASE

ALPHACHOCKS® offers you the opportunity to personalize your soft-case with stitching of your company logo or/and aircraft registration number.



SWISS MADE  
PATENTED

**ALPHA**<sup>®</sup>  
CHOCKS

## ALPHACHOCKS<sup>®</sup> MID

ALPHACHOCKS<sup>®</sup> MID is our best-selling product. Made with Business Aviation in mind, it is perfect for aircrafts up to 65t MTOW. Like all our chocks it is of the highest Swiss made quality material and designed to support and protect your aircraft. It presents spikes on both sides for maximum grip on any surface. Under request we provide Rhino 2K Polyurethane coating on one side which offers optimal performance on epoxy hanger floors without scratching it. With the simplest collapsible system, ALPHACHOCKS<sup>®</sup> MID allows you a safe and easy handling.



## MATERIAL

Made of 6082 T6 forged aluminum. The procedure used provides impressive strength maintaining minimal weight.

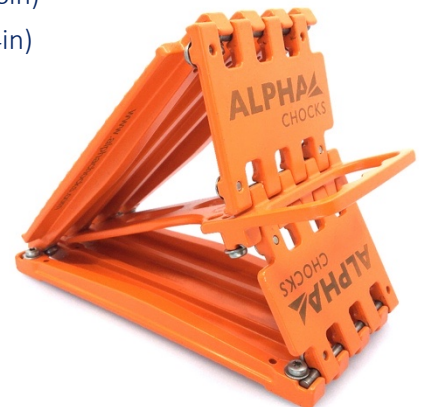
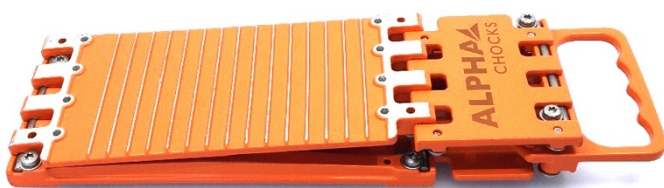
## FEATURES

- Weighs only 1.3kg (2.9lbs);
- For aircrafts up to 65t (145,000lbs) MTOW;
- For wheel diameter up to 75cm (29.5in);
- The collapsible technic makes sure the chock never gets stock under the wheel or that the wheel skid away;
- Made out of a 100% recyclable material.



## DIMENSIONS

- |           |                            |                               |
|-----------|----------------------------|-------------------------------|
| • Length: | open position 22cm (8.6in) | folded position 34cm (13.4in) |
| • Height: | open position 17cm (6.6in) | folded position 4cm (1.6in)   |
| • Width:  | open position 10cm (4in)   | folded position 10cm (4in)    |



## HOW TO USE YOUR **ALPHACHOCKS® MID:**

Place your ALPHACHOCKS® MID under the wheel, lightly push the handle half way (see position 5). Then push the handle until it completely locks over the dead center. To remove ALPHACHOCKS® MID, just slightly pull the handle and it will fold on itself allowing stress-free removal without any risk of it getting stuck under the wheel.

1



2



3



4



5



6



SWISS MADE  
PATENTED

**ALPHA**®  
CHOCKS

## SETS AVAILABLE

1. Set of 2 chocks with a handy soft-case;
2. Set of 6 chocks with its soft-case;
3. Set of 6 hocks with its hard-suitcase.



## STORING DIMENSIONS

- A set of 2 ALPHACHOCKS® MID including soft-case:  
L34cm x H8cm x W11cm (13.4in x 3.2in x 4.4in) weight 2.9kg (6.3lbs)
- A set of 6 ALPHACHOCKS® MID including soft-case:  
L38.5cm x H14cm x W28cm (15.1in x 5.5in x 11in) weight 8.6kg (19lbs)
- A set of 6 ALPHACHOCKS® MID including suitcase that glows in the dark:  
L39.1cm x H16.4cm x W30.4cm (15.4in x 12in x 6.5in) weight 9kg (20lbs)

## CUSTOMIZATIONS

We offer different options giving the client a great range of customization opportunities.

## ENGRAVING

1. Carbon engraving- laser (smooth black) of your company logo or aircraft registration number;
2. Aluminum engraving – in metal (deep aluminum) laser engraving of your company logo or aircraft registration number;
3. Aluminum engraving - colored (deep aluminum) laser engraving of your company logo or aircraft registration number in the color of your choice.



SWISS MADE  
PATENTED

**ALPHA**<sup>®</sup>  
CHOCKS

## RHINO 2K POLYURETHANE

Under request we provide Rhino 2K Polyurethane coating without spikes on one side which offers optimal performance for sensitive epoxy and polyurethane hangar floors.



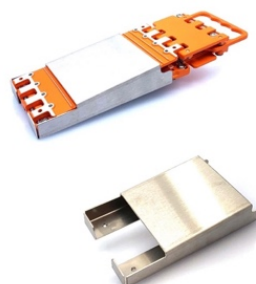
## CUSTOM COLOR

ALPHACHOCKS® offers a series of RAL colors to customize the chocks as wished by the client.



## STAINLESS STEEL CHOCK HOLDER

Optional stainless-steel chock holder is available for storing safely your chocks on the side of the tow truck.



## CUSTOMISED STITCHING ON YOUR SOFT-CASE

ALPHACHOCKS® offers you the opportunity to personalize your soft-case with stitching of your company logo or/and air craft registration number.



SWISS MADE  
PATENTED

**ALPHA**  
CHOCKS



## ALPHACHOCKS<sup>®</sup> MAX

Introducing our newest addition, ALPHACHOCKS<sup>®</sup>MAX is state-of-the-art technology. It's our strongest series yet. Capable of holding the biggest of airliners and military cargo airplanes. One side is Rhino coated for a sturdy grip and the other side can be adapted with our special interchangeable weather plates giving you all options for your specific operations. Like all our chocks, it offers optimal performance with the simplest foldable system, allowing safe and easy handling ensuring they will never get stuck under the wheel. It's the only chock that has the interchangeable weather plates that can be inexpensively replaces after wear off. Making it a flexible and cost-effective investment.



### MATERIAL

Made of carbon fiber composites. The technology used provides outstanding strength maintaining minimal weight.

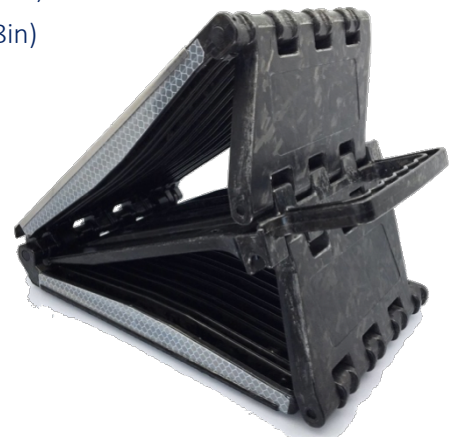
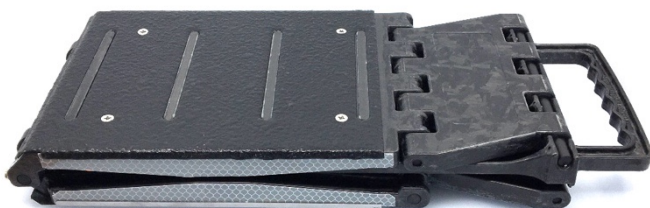
### FEATURES

- Weighs only 3kg (6.6lbs);
- For aircrafts up to 350t (780,000lbs) MTOW;
- For wheel diameter up to 125cm (49.2in);
- The collapsible technic makes sure the chock never gets stock under the wheel or that the wheel skid away;
- Made out of a 100% recyclable material.



### DIMENSIONS

- Length: open position 30.2cm (11.9in) folded position 46.4cm (18.3in)
- Height: open position 24.3cm (9.6in) folded position 5.6cm (2.2in)
- Width: open position 20.2cm (8in) folded position 20.2cm (8in)



## HOW TO USE YOUR ALPHACHOCKS® MAX:

Place your ALPHACHOCKS® MID under the wheel, lightly push the handle half way (see position 5). Then push the handle until it completely locks over the dead center. To remove ALPHACHOCKS® MID, just lightly pull the handle and it will fold on itself allowing stress-free removal without any risk of it getting stuck under the wheel.

1



2



3



4



5



6



SWISS MADE  
PATENTED

**ALPHA**®  
CHOCKS

## SETS AVAILABLE

- Set of 2 chocks with a handy soft-case;
- Set of 4 chocks with its soft-case.



## STORING DIMENSIONS

- A set of 2 ALPHACHOCKS® MAX including soft-case:  
L48cm x H12cm x W23cm (18.8in x 4.7in x 9in) weight 7.2kg (15.8lbs)
- A set of 4 ALPHACHOCKS® MAX including soft-case:  
L53cm x H29cm x W25cm (20.8in x 11.4in x 9.8in) weight 14kg (30.8lbs)

## CUSTOMIZATIONS

We offer different options giving the client a great range of customization opportunities.

## ENGRAVING

Laser engraving in smooth white of your company logo or aircraft registration number



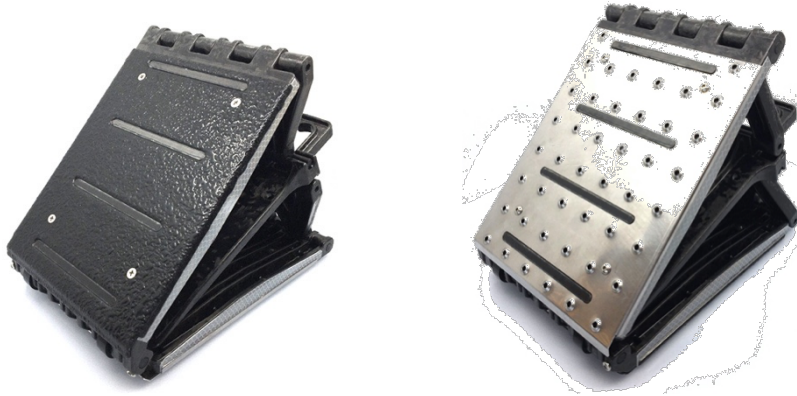
SWISS MADE  
PATENTED

**ALPHA**<sup>®</sup>  
CHOCKS

## INTERCHANGEABLE WEATHER PLATES

With ALPHACHOCKS® MAX your aircraft is protected all year around with:

1. **All season weather plates** for tarmac with snow and ice, epoxy hangar floors and ceramic floors;
2. **Heavy duty weather plates** interchangeable weather plates for extreme weather conditions;
3. **Special customized plates** on request we can adapt them to your needs.



## CUSTOMISED STITCHING ON YOUR SOFT-CASE

ALPHACHOCKS® offers you the opportunity to personalize your soft-case with stitching of your company logo or/and air craft registration number



SWISS MADE  
PATENTED

**ALPHA**®  
CHOCKS



# ALPHA<sup>®</sup>

## CHOCKS

Simplifying your daily operations and bringing chocking to the next level

+ 41 79 248 5759 | [WWW.ALPHACHOCKS.COM](http://WWW.ALPHACHOCKS.COM) | [info@alphachocks.com](mailto:info@alphachocks.com)

ALPHACHOCKS<sup>®</sup>, Schulgasse 21, 4105 Biel-Benken, Switzerland  
2020 ALPHACHOCKS<sup>®</sup> All rights reserved. ALPHACHOCKS<sup>®</sup> are trademarks or service marks of AEROGENIUS SA.



SWISS MADE  
PATENTED

**ALPHA**<sup>®</sup>  
CHOCKS