

CASTILE

BY NURRE CAXTON



CASTILE

Honoring the creativity of classical and modern artisans, the ageless look of forged and hammered metals is captured in our moulding. The irregular surfaces, organic contours and layered patinas of Castile will enhance and bring your framed artwork to the next level.

CASTILE

BY NURRE CAXTON

14809 Forged Bronze

The Style Interpretation

Nurre Caxton has translated the look of artisan-crafted metals in the new Castile Collection.

Carefully applied and contoured compo replicates the look of metals that have been heated and hammered to uncover the natural grain direction of the metals. Gently angled inward, the furrowed compo draws attention to the framed art

Genuine gold and silver leafing provide a base metallic luster and surface paints are applied then hand-rubbed to reveal high and low points of metal sheen

4 colorways recreate the most familiar and beloved forged metal aesthetics, while 3 flat profiles offer the perfect vehicle for showcasing these unique finishes

Hand-crafted in Italy exclusively for Nurre Caxton

Profile 146



14603
Forged
Pewter



14604
Forged
Iron



14606
Forged
Brass



14609
Forged
Bronze



14603 Forged Pewter

14704 Forged Iron



Profile 147



14703
Forged
Pewter



14704
Forged
Iron



14706
Forged
Brass



14709
Forged
Bronze

Profile 148



14803
Forged Pewter



14804
Forged Iron



14806
Forged Brass



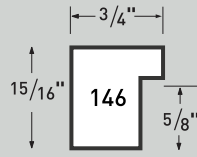
14809
Forged Bronze

14606 Forged Brass

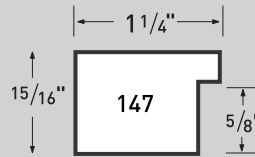


3 highly usable profiles:

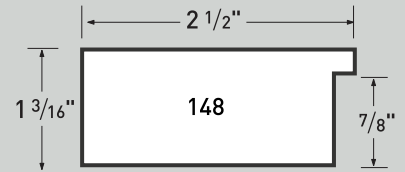
- Generous rabbet depths accommodate multiple mats and dimensional art
- In-demand moulding sizes
- Finger-joined pine provides superior stability and strength



Profile 146



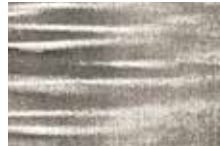
Profile 147



Profile 148

4 unique finishes:

- Hand-rubbing technique reveals underlying accent tones
- Gently irregular furrows create allusion of live-edge design
- 4 finish options replicate the most popular forged metal aesthetics



Forged Pewter



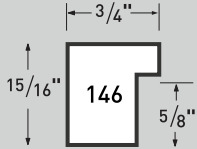
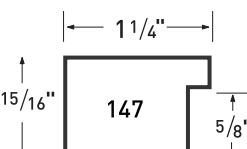
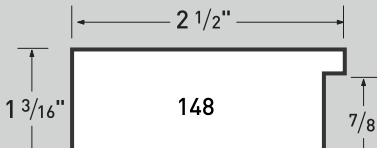
Forged Iron



Forged Brass



Forged Bronze

Castile Profiles	Part #	Description	Box Qty	List	Chop	Join	Width	Rabbet	Height
 Profile 146	14603	3/4" Forged Pewter	440	\$4.97	\$8.62	\$11.20	3/4"	5/8"	15/16"
	14604	3/4" Forged Iron	440	\$4.97	\$8.62	\$11.20	3/4"	5/8"	15/16"
	14606	3/4" Forged Brass	400	\$4.97	\$8.62	\$11.20	3/4"	5/8"	15/16"
	14609	3/4" Forged Bronze	440	\$4.97	\$8.62	\$11.20	3/4"	5/8"	15/16"
 Profile 147	14703	1-1/4" Forged Pewter	260	\$6.51	\$11.27	\$14.65	1-1/4"	5/8"	15/16"
	14704	1-1/4" Forged Iron	260	\$6.51	\$11.27	\$14.65	1-1/4"	5/8"	15/16"
	14706	1-1/4" Forged Brass	260	\$6.51	\$11.27	\$14.65	1-1/4"	5/8"	15/16"
	14709	1-1/4" Forged Bronze	260	\$6.51	\$11.27	\$14.65	1-1/4"	5/8"	15/16"
 Profile 148	14803	2-3/8" Forged Pewter	120	\$9.44	\$16.35	\$21.26	2-1/2"	7/8"	1-3/16"
	14804	2-3/8" Forged Iron	120	\$9.44	\$16.35	\$21.26	2-1/2"	7/8"	1-3/16"
	14806	2-3/8" Forged Brass	120	\$9.44	\$16.35	\$21.26	2-1/2"	7/8"	1-3/16"
	14809	2-3/8" Forged Bronze	120	\$9.44	\$16.35	\$21.26	2-1/2"	7/8"	1-3/16"

Ways to order

- Order through your **Nurre Caxton distributor**
- Order by email orders@crecidentbrands.com
- Contact our customer service team at **(847) 537-3400**

