



HAND - SURF



Mold in Graphics

Will not peel or rub off. Part of the board to last a lifetime.



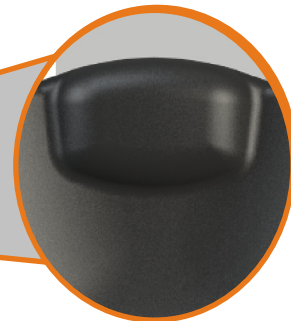
Underside Concave Channel

Maximum grip on the face of the wave. Maximum Lift hence less drag for faster optimum ride.



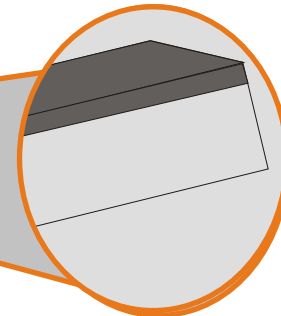
Ergonomical shaped handhold

gives maximum control when carving and turning on the wave.



LLDPE Jacket

Ding resistant. Tough as turtle shell light as a feather. Built to withstand a TSUNAMI.



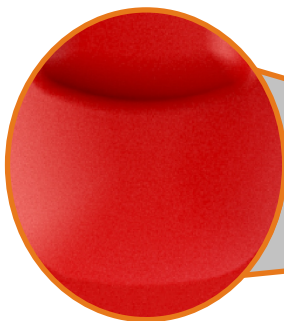
Leash Booth

recessed leash booth providing unobstructed comfort.



Textured

for extra grip and control no wax required



The Perfect Shape

designed for speed perfect for fast breaking waves in medium to large surf

