

# WANE + FLITCH

LIVE EDGE WOOD FURNITURE



QUICK FLITCH COLLECTION





QUICK AND EASY

## Live Edge Wood Furniture

---

We've made it easier for you to work with high-quality, locally-salvaged, live edge wood furniture. With years of experience working with customers, businesses, and designers, we've created an informative catalog that will help you quickly integrate a piece into your project.

We bring you the Quick Fitch Collection—a curated selection of semi-custom projects with industry-standard sizing and tiered pricing to suit any budget. This catalog is intended to be used as a reference and inspirational tool for your design needs.



URBAN SAWMILL

# Live Edge Wood

—

Since opening our doors in January 2015, we have worked with local tree services, homeowners, developers, and contractors to salvage local trees and produce them into thousands of live edge wood slabs.

We proudly control the entire process from milling to the finished project at our facility in Tacoma, WA. Our sustainable approach allows us to grow our business within our community and keep the origin of each tree intact.



Unloading Sequoia logs to be milled into usable slabs.



## LOG MILLING

Our on-site sawmill cuts the salvaged logs into useable slabs. Once milled, the slabs are stacked to begin the drying process.



## VACUUM KILN-DRYING

Using a vacuum kiln accelerates the dry time and consistently produces thoroughly dry and stable material suitable for residential and commercial use.



## WOODWORKING

From the company's mission to our team of skilled craftsmen, our work is our passion. We provide consistency from start to finish.



# Pricing Tiers

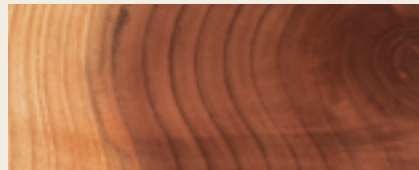
Below are the available wood species options associated with each tier.

## STANDARD SPECIES

A budget-friendly option for live edge, this selection of wood species are very common in our local area and are generally softer in density. They offer red, orange, off-white, and light caramel color tones and have uniform grain characteristics. These options are perfect for pieces that don't have heavy usage.



**FIR**  
Janka Hardness: 540



**SEQUOIA**  
Janka Hardness: 450



**MAPLE**  
Janka Hardness: 999

## PREMIUM SPECIES

Our premium selection of wood species are less common in our local area and are of higher density. They offer brown, purple, orange, red, gray, and darker caramel tones. These options are our most popular because they provide higher durability and have unique grain characteristics.



**MADRONA**  
Janka Hardness: 1460



**BLACK WALNUT**  
Janka Hardness: 1010



**MAPLE**  
Janka Hardness: 999



**ELM**  
Janka Hardness: 830

## OTHER UNCOMMON WOOD SPECIES (CUSTOM PROJECTS ONLY)



WHITE OAK



BEECH



POPLAR



CHERRY



ENGLISH WALNUT



EXTREMELY FIGURED WOOD

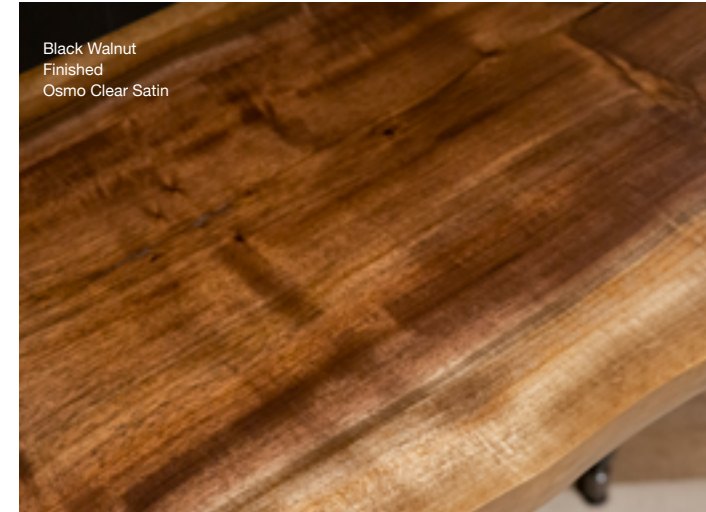
## WOOD CHARACTERISTICS

Figuring, spalting, burls, knots, wormholes, checking, voids, and other wood characteristics occur naturally, some species more likely than others. While there is no way to remove or hide them, wood characteristics add uniqueness to a piece and will be cleaned, inspected, and sealed (not filled).

Images are used as a reference to the average finished look of the wood. Actual colors and grain of each slab will vary.

# Finished Projects vs. Surfaced Only Projects

Select how you would prefer to have your project completed.



Black Walnut  
Finished  
Osmo Clear Satin

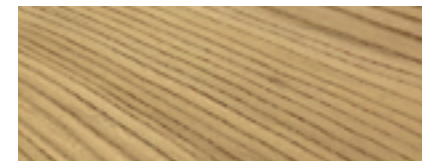
## FINISHED (Ready to Use)

**TOTAL PROJECT LEAD TIME: 8-10 WEEKS**  
(Includes leg and hardware lead times)

The finished price refers to the cost of a 100% completed project that is ready to be used or installed (see install details on page 22). This option includes surfacing (machined flat), debarking, edge cleaning, sanding, joining, leg mounting (if applicable), and finishing a slab with Osmo Polyx-Oil finish in clear satin, matte, or glossy. A preferred choice for designers, architects, and businesses who don't have the tooling, space, or time available to complete a project.

Osmo Polyx-Oil is the original Hardwax-Oil and our preferred in-house finish. Derived from natural vegetable oils and waxes, it allows for easy application, re-application, maintenance, and spot repair. Osmo is also a food-safe, water-resistant, and food-resistant finish.

## COMPARING FINISH SHEENS



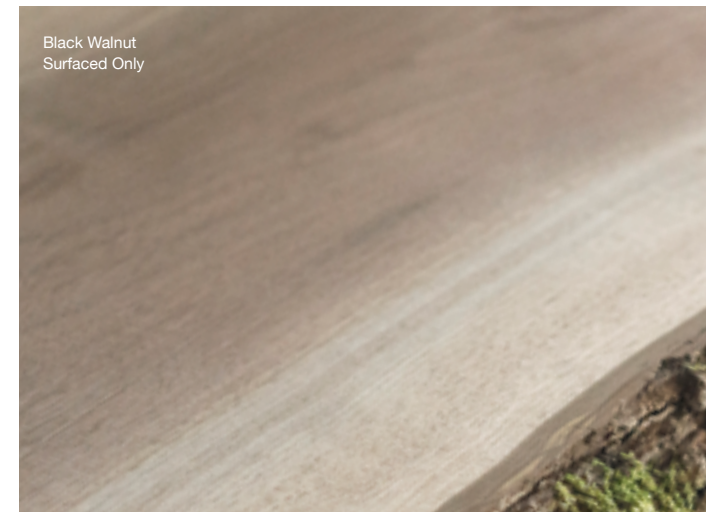
**CLEAR MATTE**  
Matte finishes absorb light and offer a flat and subtle sheen. Matte provides the most natural look.



**CLEAR SATIN**  
Satin finishes reflect some light and offer a slight sheen to emphasize any unique grain characteristics. Satin is our most popular finish.



**CLEAR GLOSS**  
Gloss finishes reflect the most light and have the highest sheen. Gloss provides a more shiny look while emphasizing any unique grain characteristics.



Black Walnut  
Surfaced Only

## SURFACED ONLY (Ready to Work On)

**TOTAL PROJECT LEAD TIME: 1-2 WEEKS**

The surfaced only price refers to the cost of a slab or multiple slabs that have been machined-flat and are ready to be worked on. This option does not include any other material preparation like debarking, edge cleaning, cutting, joining, or sanding. An ideal choice for contractors, developers, and businesses who can customize and finish the project using their tools and finishes.

We conveniently offer a collection of DIY products that we proudly use in our woodshop. Products include epoxy, coloring pigments, finishes, oil stains, edge prep brushes, tooling, gear, and maintenance kits. These products are available for purchase online and in-store.

# Live Edge Slabs

Understanding live edge wood terminology and how it can be used.

## LIVE EDGE

Live edge refers to the two naturally shaped sides of a wood slab or the wane edge. For finished projects, you have the option to maintain both live edges, one live edge, or no live edges on your slab. Two live edges are only available for 18" widths and above. For surfaced only projects, live edges will vary with each slab. The correct amount of material will be supplied to achieve the final project.



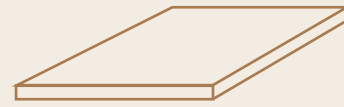
### TWO LIVE EDGE

Best for freestanding tops that have both edges intact and allow space around the entire surface.  
ie. Tables, island tops, barn doors, side tables, etc.



### ONE LIVE EDGE

Best for tops that will be placed against a wall or structure and need one straight edge. In some cases, a freestanding top may need one straight edge for additional functionality.  
ie. Desks, bar tops, islands, mantels, vanities, etc.

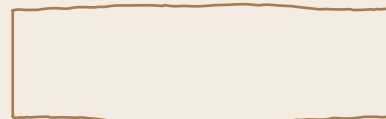


### NO LIVE EDGE

Best for projects where only straight edges are needed.  
ie. Shelving, countertops, benches, trim, doors, etc.

## WIDTH + SHAPE VARIATIONS

Measurements are taken from various points along the slab to determine the average width. Due to the organic shape of each live edge slab, widths will vary from 2"+/- and up to 6"+/- depending on each slab. Apply to projects that include one or two live edges.



### STRAIGHT

Straighter grain patterns with some light figure, less organic variation, and a more rectangular shape. Commonly found with softer woods like Fir, Sequoia, etc.



### ORGANIC

More visual characteristics like figured grain, knots, mineral coloring, and naturally shaped edges. Commonly found with hardwood species such as Elm, Black Walnut, Maple, etc.



### EXTREME

Premium visual characteristics like heavily figured grain, burls, and unique patterns. Commonly found in a variety of species and are reserved for custom projects only.

## WOOD JOINING (GLUE-UPS)

Projects with widths above 24" may require multiple slabs to be joined, also known as a glue-up. Glue-ups maintain a structurally stable surface and are the standard method for creating projects with wider dimensions and uniform edges. The number of slabs used in a glue-up is determined by material availability, shape, and grain orientation. Done on a project-by-project basis.

# of GU = number of slab pieces



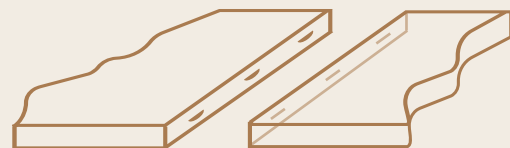
2pc Glue-up



3pc Glue-up



4pc Glue-up



### SLAB GLUE-UPS

For finished projects, wide slabs will be surfaced, ripped (straight-edge cut), and biscuit-joined.  
For surfaced projects, wide slabs are surfaced only and not cut or joined.

# Product Categories

Our product categories are sorted by standard dimensions and their respective projects.



## WIDE TOPS

Dining tables, conference tables, kitchen island tops, picnic tables, office desks, kitchen tables, etc.

Width options: 36", 42", 48"

Length options: 60", 72", 96", 120", 144"



## MEDIUM TOPS

Desks, coffee tables, bistro tables, countertops, bathroom vanities, headboards, reception desks, etc.

Width options: 20", 24", 28", 32"

Length options: 48", 72", 96", 120"



## NARROW TOPS

Benches, console tables, coffee tables, window seating, shelving, entryway tables, etc.

Widths options: 10", 14", 18"

Length options: 36", 48", 72", 96", 120"



## SHELVING + BRACKETS

Floating shelves, mantels, coat racks, display shelves, mirror frames, window sills, etc.

Width options: 9", 12", 15"

Length options: 48", 72", 96", 120"



## BARN DOORS + MOUNTS

Sliding live edge barn doors for closets, pantries, bedrooms, bathrooms, laundry rooms, etc.

Width options: 30", 34", 38"

Length options: 84"



## TABLE LEGS

Custom steel+cast iron legs available in multiple finishes and standard heights for coffee tables, benches, and tables.

Counter and bar heights available for select styles.

Leg height options: 16", 28", 34", 40"





QUICK FLITCH

## Wide Tops

Dining tables, conference tables, kitchen island tops, picnic tables, desks, headboards, kitchen tables, and more.

### SPECIFICATIONS

- Thickness:** 1 3/4" - 2"
- Width options:** 36", 42", 48"
- Length options:** 60", 72", 96", 120", 144"
- Number of Live Edges:** 0-2

Elm 2pc glue-up



Maple single slab



Black Walnut 3pc glue-up



English Walnut 2pc glue-up

Projects with dimensions above 24" wide may require multiple slab glue-ups to achieve desired widths.

The number of slabs used in a glue-up is determined by material availability, shape, and grain orientation. Done on a project-by-project basis.

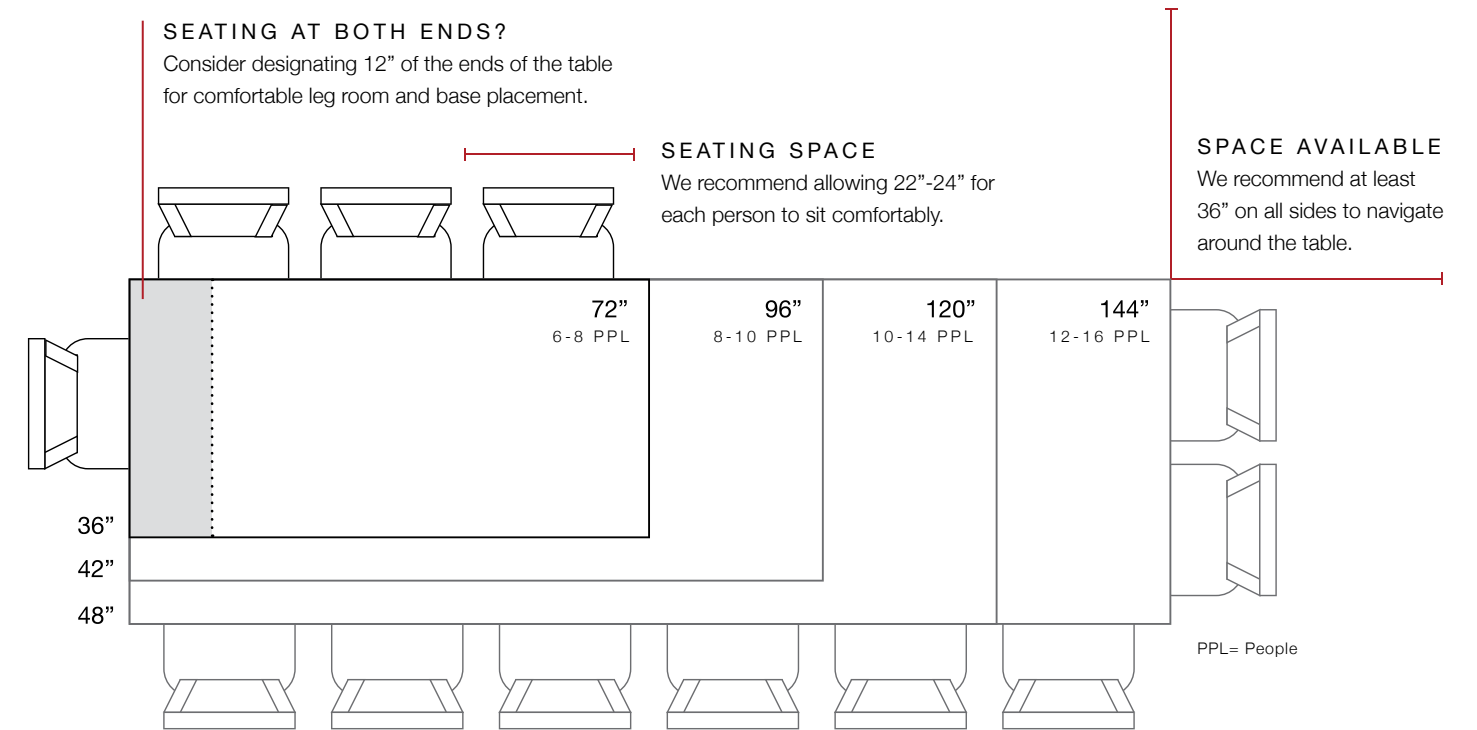
### FINISHED

Dimensions	Thickness	Standard	Premium	# of GU
36" x 60"	1 3/4"-2"	\$2045	\$2610	1-3
36" x 72"	1 3/4"-2"	\$2454	\$3132	1-3
36" x 96"	1 3/4"-2"	\$3272	\$4176	1-3
36" x 120"	1 3/4"-2"	\$4040	\$5220	1-3
36" x 144"	1 3/4"-2"	\$4908	\$6264	1-3
<hr/>				
42" x 60"	1 3/4"-2"	\$2390	\$3045	2-4
42" x 72"	1 3/4"-2"	\$2868	\$3654	2-4
42" x 96"	1 3/4"-2"	\$3824	\$4872	2-4
42" x 120"	1 3/4"-2"	\$4780	\$6090	2-4
42" x 144"	1 3/4"-2"	\$5736	\$7308	2-4
<hr/>				
48" x 60"	1 3/4"-2"	\$2725	\$3480	2-4
48" x 72"	1 3/4"-2"	\$3270	\$4176	2-4
48" x 96"	1 3/4"-2"	\$4360	\$5568	2-4
48" x 120"	1 3/4"-2"	\$5450	\$6960	2-4
48" x 144"	1 3/4"-2"	\$6540	\$8352	2-4

### SURFACED SLABS ONLY

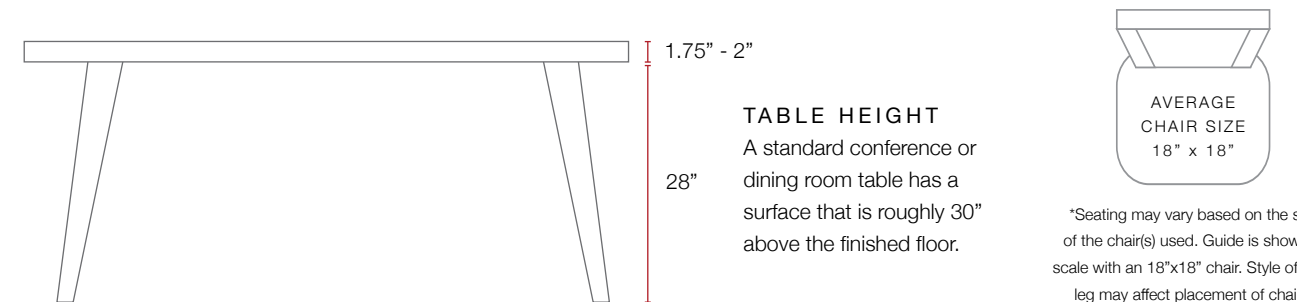
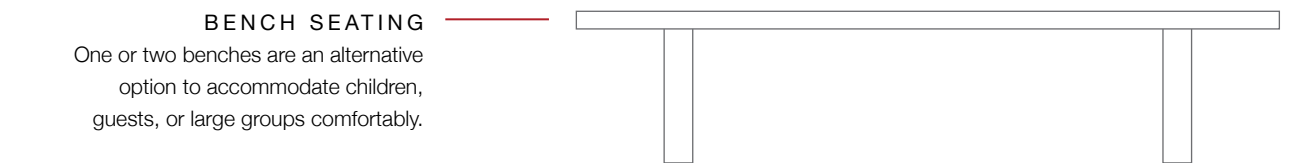
Dimensions	Thickness	Standard	Premium	# of GU
36" x 60"	1 3/4"-2"	\$600	\$1160	1-3
36" x 72"	1 3/4"-2"	\$720	\$1392	1-3
36" x 96"	1 3/4"-2"	\$960	\$1856	1-3
36" x 120"	1 3/4"-2"	\$1200	\$2320	1-3
36" x 144"	1 3/4"-2"	\$1440	\$2784	1-3
<hr/>				
42" x 60"	1 3/4"-2"	\$680	\$1330	2-4
42" x 72"	1 3/4"-2"	\$816	\$1596	2-4
42" x 96"	1 3/4"-2"	\$1088	\$2128	2-4
42" x 120"	1 3/4"-2"	\$1360	\$2660	2-4
42" x 144"	1 3/4"-2"	\$1632	\$3192	2-4
<hr/>				
48" x 60"	1 3/4"-2"	\$760	\$1505	2-4
48" x 72"	1 3/4"-2"	\$912	\$1806	2-4
48" x 96"	1 3/4"-2"	\$1216	\$2408	2-4
48" x 120"	1 3/4"-2"	\$1520	\$3010	2-4
48" x 144"	1 3/4"-2"	\$1824	\$3612	2-4

## Seating Guide



### BENCH SEATING

One or two benches are an alternative option to accommodate children, guests, or large groups comfortably.



### CONFERENCE TABLE SEATING

Allow 30" for each person when seating around the conference table. This provides space for office rolling chairs, bags, and leg room when rotating. For conference rooms with a display board, projector screen, or easel, allow a 56" distance from the end of the table to the display.



Elm single slab

## QUICK FLITCH Medium Tops

Desks, coffee tables, bistro tables, counter tops, bar tops, vanities, headboards, reception desks, and more.

### SPECIFICATIONS

- Thickness:** 1 3/4" - 2"
- Width options:** 20", 24", 28", 32"
- Length options:** 48", 72", 96", 120"
- Number of Live Edges:** 0-2



Elm single slab



Elm single slab



English Walnut single slab

### FINISHED

Dimensions	Thickness	Standard	Premium	# of GU
20" x 48"	1 3/4"-2"	\$908	\$1160	1-2
20" x 72"	1 3/4"-2"	\$1362	\$1740	1-2
20" x 96"	1 3/4"-2"	\$1816	\$2320	1-2
20" x 120"	1 3/4"-2"	\$2270	\$2900	1-2
<hr/>				
24" x 48"	1 3/4"-2"	\$1096	\$1392	1-2
24" x 72"	1 3/4"-2"	\$1644	\$2088	1-2
24" x 96"	1 3/4"-2"	\$2192	\$2784	1-2
24" x 120"	1 3/4"-2"	\$2740	\$3480	1-2
<hr/>				
28" x 48"	1 3/4"-2"	\$1274	\$1624	1-2
28" x 72"	1 3/4"-2"	\$1908	\$2436	1-2
28" x 96"	1 3/4"-2"	\$2544	\$3248	1-2
28" x 120"	1 3/4"-2"	\$3180	\$4060	1-2
<hr/>				
32" x 48"	1 3/4"-2"	\$1456	\$1856	1-3
32" x 72"	1 3/4"-2"	\$2184	\$2784	1-3
32" x 96"	1 3/4"-2"	\$2912	\$3712	1-3
32" x 120"	1 3/4"-2"	\$3640	\$4640	1-3

### SURFACED SLABS ONLY

Dimensions	Thickness	Standard	Premium	# of GU
20" x 48"	1 3/4"-2"	\$312	\$560	1-2
20" x 72"	1 3/4"-2"	\$468	\$840	1-2
20" x 96"	1 3/4"-2"	\$624	\$1120	1-2
20" x 120"	1 3/4"-2"	\$780	\$1400	1-2
<hr/>				
24" x 48"	1 3/4"-2"	\$352	\$652	1-2
24" x 72"	1 3/4"-2"	\$528	\$978	1-2
24" x 96"	1 3/4"-2"	\$704	\$1304	1-2
24" x 120"	1 3/4"-2"	\$880	\$1630	1-2
<hr/>				
28" x 48"	1 3/4"-2"	\$396	\$744	1-2
28" x 72"	1 3/4"-2"	\$594	\$1116	1-2
28" x 96"	1 3/4"-2"	\$792	\$1488	1-2
28" x 120"	1 3/4"-2"	\$990	\$1860	1-2
<hr/>				
32" x 48"	1 3/4"-2"	\$436	\$836	1-3
32" x 72"	1 3/4"-2"	\$654	\$1254	1-3
32" x 96"	1 3/4"-2"	\$872	\$1672	1-3
32" x 120"	1 3/4"-2"	\$1090	\$2090	1-3

Projects with dimensions above 24" wide may require multiple slab glue-ups to achieve desired widths. The number of slabs used in a glue-up is determined by material availability, shape, and grain orientation. Done on a project-by-project basis.



Fir single slab straight edge

## QUICK FLITCH Narrow Tops

Benches, console tables, coffee tables, window seating, shelving, entryway tables, and more.

### SPECIFICATIONS

- Thickness:** 1 3/4" - 2"
- Width options:** 10", 14", 18"
- Length options:** 36", 48", 72", 96", 120"
- Number of Live Edges:** 0-2



Maple single slab



Maple single slab



Elm single slab

For console tables, we suggest leg options that are sold as a set of 4 (McKinley, Jackson, or Tacoma style legs).

### FINISHED

Dimensions	Thickness	Standard	Premium	# of GU
10" x 36"	1 3/4"-2"	\$339	\$435	1
10" x 48"	1 3/4"-2"	\$452	\$580	1
10" x 72"	1 3/4"-2"	\$678	\$870	1
10" x 96"	1 3/4"-2"	\$904	\$1160	1
10" x 120"	1 3/4"-2"	\$1130	\$1450	1
<hr/>				
14" x 36"	1 3/4"-2"	\$447	\$609	1
14" x 48"	1 3/4"-2"	\$606	\$812	1
14" x 72"	1 3/4"-2"	\$924	\$1218	1
14" x 96"	1 3/4"-2"	\$1242	\$1624	1
14" x 120"	1 3/4"-2"	\$1560	\$2030	1
<hr/>				
18" x 36"	1 3/4"-2"	\$615	\$783	1-2
18" x 48"	1 3/4"-2"	\$820	\$1044	1-2
18" x 72"	1 3/4"-2"	\$1230	\$1566	1-2
18" x 96"	1 3/4"-2"	\$1640	\$2088	1-2
18" x 120"	1 3/4"-2"	\$2050	\$2610	1-2

### SURFACED SLABS ONLY

Dimensions	Thickness	Standard	Premium	# of GU
10" x 36"	1 3/4"-2"	\$156	\$249	1
10" x 48"	1 3/4"-2"	\$208	\$332	1
10" x 72"	1 3/4"-2"	\$312	\$498	1
10" x 96"	1 3/4"-2"	\$416	\$664	1
10" x 120"	1 3/4"-2"	\$520	\$830	1
<hr/>				
14" x 36"	1 3/4"-2"	\$186	\$318	1
14" x 48"	1 3/4"-2"	\$248	\$424	1
14" x 72"	1 3/4"-2"	\$372	\$636	1
14" x 96"	1 3/4"-2"	\$496	\$848	1
14" x 120"	1 3/4"-2"	\$620	\$1060	1
<hr/>				
18" x 36"	1 3/4"-2"	\$216	\$387	1-2
18" x 48"	1 3/4"-2"	\$288	\$516	1-2
18" x 72"	1 3/4"-2"	\$432	\$774	1-2
18" x 96"	1 3/4"-2"	\$576	\$1032	1-2
18" x 120"	1 3/4"-2"	\$720	\$1290	1-2





Black Walnut single slab

## QUICK FLITCH Shelving + Mantels

Floating shelves, mantels, coat racks, display shelves, mirror frames, window sills, and more.

### SPECIFICATIONS

- Thickness:** 1 1/2" (shelving) 2" (mantels)
- Width options:** 9", 12", 15"
- Length options:** 48", 72", 96", 120"
- Number of Live Edges:** 0-1



Stained Maple single slab\*



Maple single slab



Stained Maple single slab\*

### LIVE EDGES

Due to its narrow width, two live edges will not be available as an option for shelf and mantel stock.

#### FINISHED

Dimensions	Thickness		Standard		Premium	
	Shelf	Mantel	Shelf	Mantel	Shelf	Mantel
9" x 48"	1 1/2"	2"	\$408	\$449	\$524	\$577
9" x 72"	1 1/2"	2"	\$612	\$674	\$786	\$865
9" x 96"	1 1/2"	2"	\$816	\$898	\$1048	\$1153
9" x 120"	1 1/2"	2"	\$1020	\$1122	\$1310	\$1441
12" x 48"	1 1/2"	2"	\$544	\$599	\$696	\$766
12" x 72"	1 1/2"	2"	\$816	\$898	\$1044	\$1149
12" x 96"	1 1/2"	2"	\$1088	\$1197	\$1392	\$1532
12" x 120"	1 1/2"	2"	\$1360	\$1496	\$1740	\$1914
15" x 48"	1 1/2"	2"	\$680	\$748	\$868	\$955
15" x 72"	1 1/2"	2"	\$1020	\$1122	\$1302	\$1433
15" x 96"	1 1/2"	2"	\$1360	\$1496	\$1736	\$1910
15" x 120"	1 1/2"	2"	\$1700	\$1870	\$2170	\$2387

#### SURFACED SLABS ONLY

Dimensions	Thickness		Standard		Premium	
	Shelf	Mantel	Shelf	Mantel	Shelf	Mantel
9" x 48"	1 1/2"	2"	\$196	\$216	\$308	\$339
9" x 72"	1 1/2"	2"	\$294	\$324	\$462	\$509
9" x 96"	1 1/2"	2"	\$392	\$431	\$616	\$678
9" x 120"	1 1/2"	2"	\$490	\$539	\$770	\$847
12" x 48"	1 1/2"	2"	\$228	\$251	\$376	\$414
12" x 72"	1 1/2"	2"	\$342	\$377	\$564	\$621
12" x 96"	1 1/2"	2"	\$456	\$502	\$752	\$828
12" x 120"	1 1/2"	2"	\$570	\$627	\$940	\$1034
15" x 48"	1 1/2"	2"	\$260	\$286	\$448	\$493
15" x 72"	1 1/2"	2"	\$390	\$429	\$672	\$740
15" x 96"	1 1/2"	2"	\$520	\$522	\$896	\$986
15" x 120"	1 1/2"	2"	\$650	\$715	\$1120	\$1232

\* Wood staining is available for custom projects only\*



Maple single slab

## QUICK FLITCH Shelf Brackets

Low-profile and high strength floating shelf brackets built from solid steel in the U.S.A.

### SPECIFICATIONS

- 5/8" outside diameter x 6" long rods.
- Lead time is 5-7 days.
- Supports floating shelves from 1 1/2"- 2" thick



### 46" SHELF BRACKET

Max load is 135lbs (45lbs on each rod)  
3 Rods



### 70" / 78" SHELF BRACKET

Max load is 225lbs (45lbs on each rod)  
5 Rods

**FOR SHELVING ABOVE FIREPLACES**  
*Refer to your heat-producing device for recommended shelf clearance.*

### BRACKET BUYING GUIDE

Shelf Length	Suggested Bracket	Fits Up To	Max Load	Rods	Color	Price
48"	46" Bracket	48"- 52" shelves	135lbs	3 Rods	Matte Black	\$105.95
72"	70" Bracket	60"- 72" shelves	225lbs	5 Rods	Matte Black	\$149.95
96"	78" Bracket	80"- 96" shelves	225lbs	5 Rods	Matte Black	\$169.95
120"	(2x) 46" Bracket	96"- 120" shelves	270lbs	6 Rods	Matte Black	\$210.95





## QUICK FLITCH Barn Doors

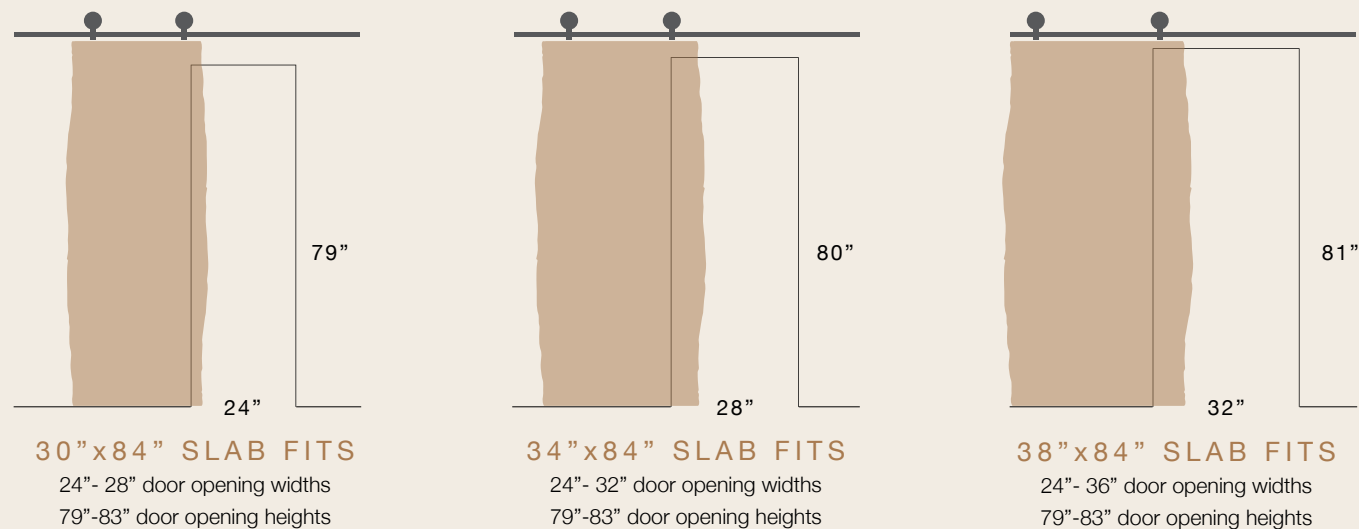
Sliding live edge barn doors for closets, pantries, bedrooms, bathrooms, laundry rooms, and more.

### SPECIFICATIONS

- Thickness:** 1 3/4"
- Width options:** 30", 34", 38"
- Height options:** 84"
- Number of Live Edges:** 0-2

Elm single slab

### DOOR SIZING GUIDE



### BARN DOOR WALL CLEARANCE

Allow at least a 3ft-4ft clearance left or right of door opening.

#### FINISHED

Dimensions	Thickness	Standard	Premium	# of GU
30" x 84"	1 3/4"	\$2275	\$2800	1-3
34" x 84"	1 3/4"	\$2583	\$3171	1-3
38" x 84"	1 3/4"	\$2884	\$3549	1-3

#### SURFACED SLABS ONLY

Dimensions	Thickness	Standard	Premium	# of GU
30" x 84"	1 3/4"	\$1148	\$1806	1-3
34" x 84"	1 3/4"	\$1225	\$1967	1-3
38" x 84"	1 3/4"	\$1295	\$2128	1-3



## QUICK FLITCH Door Hardware

Highly durable sliding door hardware manufactured and assembled in Washington.

### SPECIFICATIONS

- Lead time is 5-7 days.
- Can support the weight of live edge wood doors.

### TRACKS



#### CLASSIC

Steel straps fasten to the face of the door with the top of the hangers over the wheels.



#### AERO

The hangers affix to the top of the door. Simple appeal without sacrificing durability.

#### CLASSIC + AERO TRACKS

**6' Kit (fits 36" width doors and under)**  
\*Choose this for 34" and 36" width barn door\*  
Black, Oil Rubbed Bronze, or Raw Steel= \$369  
White= \$402

**7' Kit (fits 42" doors and under)**  
\*Choose this for 38" width barn door\*  
Black, Oil Rubbed Bronze, or Raw Steel= \$382  
White= \$415

### ACCESSORIES



#### CLASSIC BAR

The Classic Bar Door Pull is designed to complement the Classic Track.

Black, Oil Rubbed Bronze, White, or Raw Steel

- 13" Pull Only= \$151
- 13" Pull Set + 9" Flush Pull= \$201
- 20" Pull Only= \$156
- 20" Pull Set + 15" Flush Pull= \$245



#### SWISS ROD

This barn door handle set is made from the highest quality, brushed, 303 stainless steel.

Brushed 303 Stainless Steel Set

- 12" Pull Only= \$201
- 12" Bar Pull + 9" Flush Pull Set= \$297
- 18" Pull Only= \$246
- 18" Bar Pull + 15" Flush Pull Set= \$398



#### ADJUSTABLE C-GUIDE

Two piece door guide to prevent the door from swaying on the track.

Black, Oil Rubbed Bronze, or Raw Steel= \$44



#### ADJUSTABLE END STOP

Enables you to stop the door at a specific spot along the track.

Black, Oil Rubbed Bronze, or Raw Steel= \$40

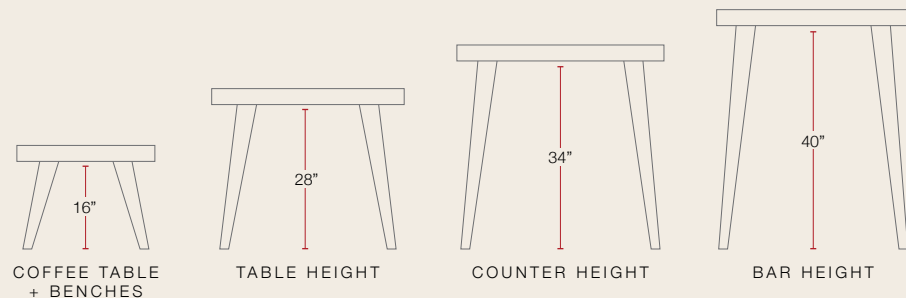
FLUSH PULL



# Table Legs

Our table legs are custom-made to order. Lead time for our leg selections is 3-6 weeks and will be determined based upon the style, finish, and height selected.

PC= Powder Coated



STANDARD OIL

## MCKINLEY

SOLD AS A SET OF 4

Four steel legs with three rods and adjustable feet. Rod diameter 3/8" or 1/2" with one color option. *Recommended for console tables.*

### Standard Oil Finish (3/8")

16"= \$164.95  
28"= \$199.95  
34"= \$199.95

### Standard Oil Finish (1/2")

16"= \$189.95  
28"= \$229.95  
34"= \$249.95



STANDARD OIL

## SPRAGUE

SOLD AS A SET OF 2

Two solid steel legs with a modern X-shape. 2 x 2" Tube steel with one color option.

### Standard Oil Finish

16"= \$179.95  
28"= \$229.95



STANDARD OIL  
SATIN BLACK  
GLOSS WHITE  
METALLIC SILVER

## PACIFIC

SOLD AS A SET OF 2

Two flat steel legs with a bell or box shape. 1/2" Flat steel for 28" height and 1/4" flat steel for 16". Four color options.

### Standard Oil Finish

16"= \$269.95  
28"= \$379.95

### Other Finishes

16"= \$419.95  
28"= \$529.95



STANDARD OIL  
SATIN BLACK  
DISTRESSED COPPER  
BRUSHED METAL  
GUN METAL

## PROCTOR

SOLD AS A SET OF 2

Two tube steel legs with an inverted bell shape. 1x3" Tube steel with five color options.

### Standard Oil Finish

16"= \$319.95  
28"= \$419.95  
34"= \$449.95  
40"= \$449.95

### Other Finishes

16"= \$469.95  
28"= \$569.95  
34"= \$599.95  
40"= \$599.95



STANDARD OIL  
SATIN BLACK  
GLOSS WHITE  
METALLIC SILVER

## TACOMA

SOLD AS A SET OF 4

Four flat steel legs with a modern v-shape. 3/8" Flat steel. 1/4" flat steel for 16" heights. Four color options. *Recommended for console tables.*

### Standard Oil Finish

16"= \$289.95  
28"= \$409.95  
34"= \$449.95  
40"= \$449.95

### Other Finishes

16"= \$439.95  
28"= \$559.95  
34"= \$599.95  
40"= \$599.95

PC= Powder Coated



SATIN BLACK  
METALLIC SILVER

## BROADWAY

SOLD AS A SET OF 2

Two vintage/antique style cast iron legs. Custom cast iron with two color options.

### PC Satin Black

15.75"= \$324.95  
29"= \$799.95  
34"= \$859.95  
37"= \$1049.95

### PC Metallic Silver

15.75"= \$474.95  
29"= \$949.95  
34"= \$1009.95  
37"= \$1199.95



SATIN BLACK  
SATIN SILVER

## JACKSON

SOLD AS A SET OF 4

Four flat steel legs with a modern pin-shaped style. 1/4" Plate steel with two color options. *Recommended for console tables.*

### PC Satin Black

14.5"= \$499.95  
27.5"= \$779.95

### PC Satin Silver

14.5"= \$699.95  
27.5"= \$979.95



SATIN BLACK  
SATIN SILVER

## SCHUSTER

SOLD AS A SET OF 2

Two solid steel legs with a modern curved shape. 1/4" Plate steel with two color options.

### PC Satin Black

16"= \$529.95  
27.5"= \$859.95

### PC Satin Silver

16"= \$729.95  
27.5"= \$1059.95



SATIN BLACK  
SATIN SILVER

## VASSAULT

SOLD AS A SET OF 2

Four steel legs with a modern blade shape. Solid wood spanner included for 27.5" height. 1/4" Plate steel with two color options.

### PC Satin Black

13.5"= \$479.95  
27.5"= \$859.95

### PC Satin Silver

13.5"= \$679.95  
27.5"= \$1059.95



SATIN BLACK  
SATIN SILVER

## RUSTON

SOLD AS A SET OF 2

Two solid steel legs with a classic v-shape. 3/8" Plate steel with two color options.

### PC Satin Black

13.5"= \$529.95  
27.5"= \$869.95

### PC Satin Silver

13.5"= \$729.95  
27.5"= \$1069.95



SATIN BLACK  
SATIN SILVER

## BRIDGEPORT

SOLD AS A SET OF 2

Two solid steel legs with a classic trestle style. 1x3" Tube steel with two color options.

### PC Satin Black

27.5"= \$915.95

### PC Satin Silver

27.5"= \$1115.95

Leg images represent standard 28" table height legs. Coffee table/bench, counter, and bar height legs may vary slightly.

Leg images represent standard 28" table height legs. Coffee table/bench, counter, and bar height legs may vary slightly.



WE DO

# Custom Projects

We build custom projects that go beyond the scope of our Quick Fitch Collection.

Stained Elm coffee table with brass bowtie inlays.

## Customizations

We can build a custom project that is more specific to your needs and style. See below for available design options to make a unique piece.



### SPECIES + SHAPES

Explore our warehouse and choose your slab from our inventory of 12 rotating species. Characteristics include unique shapes, sizes, and figured grain.



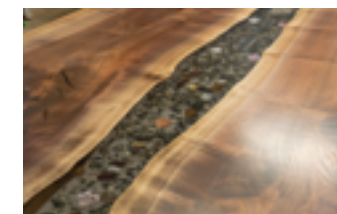
### WOOD INLAYS

Add some character and stabilization to your wood with complementing or contrasting wood inlays like a classic bow-tie.



### SPECIALTY CUTS

We can make precise cuts for miters, waterfalls, corner tables, and more.



### VOID FILLS

Join or fill voids in slabs with high-quality customized epoxy or tempered glass.



### CUSTOM SIZING

Customize the thickness, length, and width of the slab exactly how you need it.



### FINISH OPTIONS

Choose from our selection of alternative finishing options for residential and commercial use.



### ENGRAVING

Personalize a project with custom CNC engraving or laser etching.



### OTHER HARDWARE

Custom sizing and styles for door hardware, table legs, and shelf mounts.



### WOOD STAINS

Alter the color tone of a live edge wood slab with naturally pigmented oil stains.



### ACCESSORIES

Add power modules, wireless charging, grommets, and other wire management options. Ask us for options.

### CUSTOM PROJECT INQUIRIES

For custom project inquiries, contact us at [info@waneandfitch.com](mailto:info@waneandfitch.com) with your project idea, dimensions, and species to get started.



# Quick Flitch Ordering

We will be releasing a business portal to efficiently place an order from this catalog. In the meantime, we are taking Quick Flitch orders manually to ensure your project gets processed appropriately.

To start your order, email us at [quickflitch@waneandflitch.com](mailto:quickflitch@waneandflitch.com) with the following information:

## FOR FINISHED PROJECTS

- Contact / PO Information
- Your Sales Rep (if applicable)
- Product Category
- Wood Species
- Quantity
- Dimensions
- Finish Sheen
- Project Timeframe (in-hands date)
- Number of Live Edges
- Hardware/Legs
  - Size
  - Finish
  - Quantity
  - Door Accessories
- Will Call or Shipping/Delivery
- Project notes + drawings

## FOR SURFACED ONLY PROJECTS

- Contact / PO Information
- Your Sales Rep (if applicable)
- Wood Species
- Quantity
- Dimensions
- Project Timeframe (in-hands date)
- Hardware/Legs
  - Size
  - Finish
  - Quantity
  - Door Accessories
- Will Call or Shipping/Delivery
- Project notes + drawings

One of our sales reps will contact you soon to process your Quick Flitch order.

**WOOD SELECTION** - Please confirm your preferred wood species, quantities, and size are available before placing your order. Quick Flitch orders are a streamlined semi-custom project, the slab(s) will be carefully selected by our team and does not include the service of picking out your slab. Customer slab selection is only available for custom projects. Showroom visits to choose wood species, legs, hardware, and final inspections are available by appointment only or as necessary.

**LEAD TIMES** - Lead times are an estimate and will be defined at the time of sale. Estimates may vary based on the scope of the project, availability, and production schedule. Contact your sales rep prior to ordering for our current lead times.

**TOTAL LEAD TIME FOR FINISHED PROJECTS IS 8-10 WEEKS.**  
**TOTAL LEAD TIME FOR SURFACED PROJECTS IS 1-2 WEEKS.**  
**TOTAL LEAD TIME FOR CUSTOM PROJECTS IS 8-12 WEEKS.**

**PAYMENT** - Payment can be made by cash, check, or credit card. Consult with your sales rep for applicable terms. Terms & conditions apply and will be sent during time of sale.

**WILL CALL, LOCAL DELIVERY, SHIPPING, AND INSTALLATION** - Will call is our preferred method. Local delivery is available for an additional fee and includes standard freestanding furniture assembly but not built-in installation. Wane+Flitch does not perform any built-in installation; a third-party installer may be required. Shipping is available if needed; rates will vary based on the final size of the project, weight, shipping methods, and destination. Shipping costs are estimated after project completion and billed separately.

**DISCLAIMER** - Pricing, products, and services are subject to change and updated versions of this publication may be available. This catalog may not be replicated, reproduced, or modified in any way without written permission of Wane+Flitch. This catalog shall not be shared with other parties and is only intended for the party it was given to. We reserve the right to refuse pricing reflected in this catalog if this was not shared directly with you from one of our team members. © Copyright 2020 Wane+Flitch, LLC. Version 1.0. Last updated 3/15/2020.

# WANE + FLITCH

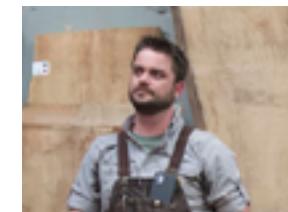
WE LOVE WHAT WE DO

Thank you for reviewing the Quick Flitch Catalog. Our dedicated team looks forward to working with you and making your experience welcoming, informative, and efficient! In addition to our made-to-order furniture, we also offer sawmill services, wood slabs, and DIY products for customer-built projects. Our showroom is available to explore our full line of products and services, simply to meet us, or ask any questions you might have. Please check out our daily adventures and recent projects on our website and social media.

## OUR STAFF



JON SAYRE



BRETT JOHNSON



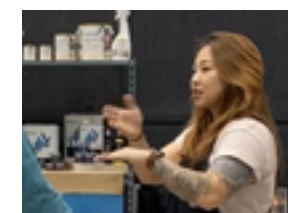
JEFF WOLFF



LUKE DEKKER



LUKE LARSEN



JENNY LY



NICOLE MARTIN



LYLE BYRD



**SHOWROOM + WAREHOUSE**  
701 E 72nd St. Tacoma, WA 98404  
(E 72nd St + E McKinley Ave)

**OUR HOURS**  
Mon-Wed: Appointment Only  
Thu-Fri: 10am-5pm  
Sat: 9am-2pm

**CONTACT US**  
(253) 200-5939  
[info@waneandflitch.com](mailto:info@waneandflitch.com)

**VIEW OUR WORK:**  
[@waneandflitch](#)  
[waneandflitch.com](http://waneandflitch.com)



English Walnut dining table  
with 1/2" rod McKinley legs.



WANEANDFLITCH.COM