

# FLOATING Shelf/Mantel

## INSTALLATION GUIDE

WANE + FLITCH

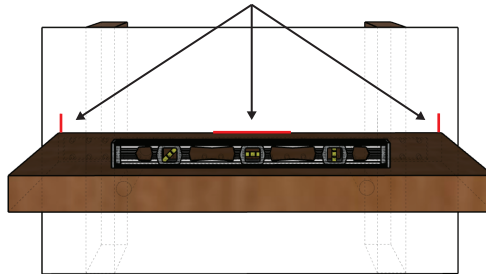
### WHAT YOU NEED

- Power Drill
- Wood Screws
- Measuring Tape
- Stud Finder
- Level
- Pencil

### BEFORE YOU START

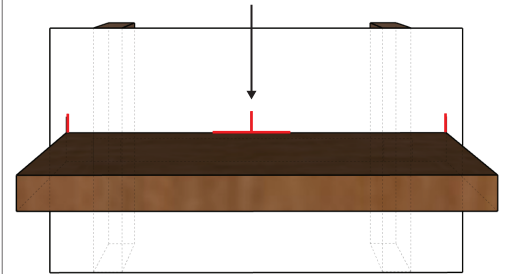
Check your wall for flatness with a 4ft+ level. If walls are not flat, it may lead to issues installing the shelf as the rods may become skewed.

#### 1. MARK THE LEFT, TOP, AND RIGHT EDGES OF THE SHELF ON THE WALL



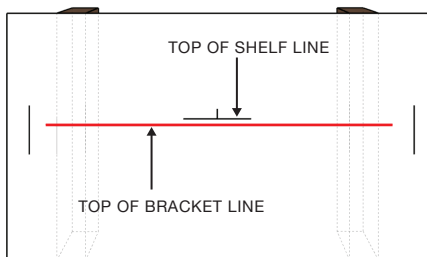
Place your shelf/mantel at your ideal location of the wall. Check that your shelf is level. With a pencil, mark the top, left and right edges of the shelf onto the wall.

#### 2. FIND THE CENTER OF THE SHELF AND MARK IT ON THE WALL



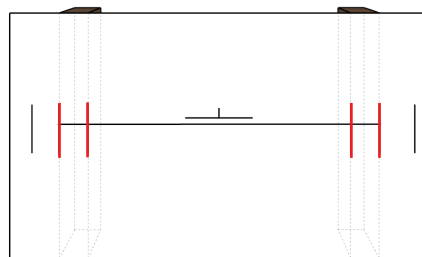
With a measuring tape, find the center of the shelf and mark the center on the wall. There may be a marking

#### 3. DRAW A LINE WHERE THE TOP OF THE BRACKET WOULD BE PLACED



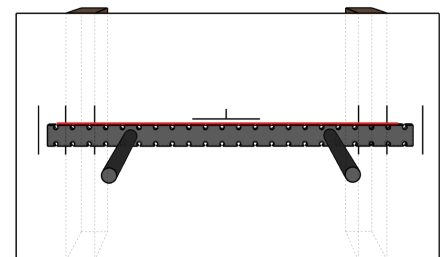
With the bracket in the shelf, measure the distance from the top of the shelf and the top of the bracket. Using a level, draw a horizontal line where the top of the bracket would be placed.

#### 4. MARK THE STUDS ON THE WALL



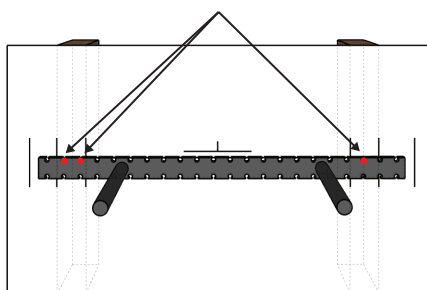
Use a stud finder and pencil to mark the outside edges of the studs behind the wall.

#### 5. ALIGN YOUR BRACKET TO YOUR MARKED BRACKET LINE



Align the center of the bracket to the center line you marked on the wall. Align the bracket to the horizontal line.

#### 6. SECURE THE BRACKET TO WALL STUDS



Install the bracket using wood screws to the marked studs on the wall. Drill screws along the top of the bracket. Bottom screws are optional.

#### 7. SLIDE YOUR SHELF/MANTEL INTO THE BRACKET



Slide shelf onto bracket and check the fitting. Your shelf should fit tight and may require additional force.

### INSTALLATION TIPS

- If your shelf can wiggle up and down, wrap electrical tape around the ends of each bracket rod for a tighter fit.
- If your shelf does not sit level, place a shim behind the bracket to set your shelf level.
- If you are unable to secure your bracket to studs, we recommend to use toggle anchors.
- If your shelf does not go all the way in, tap the shelf into place using a rubber mallet and thick cloth.