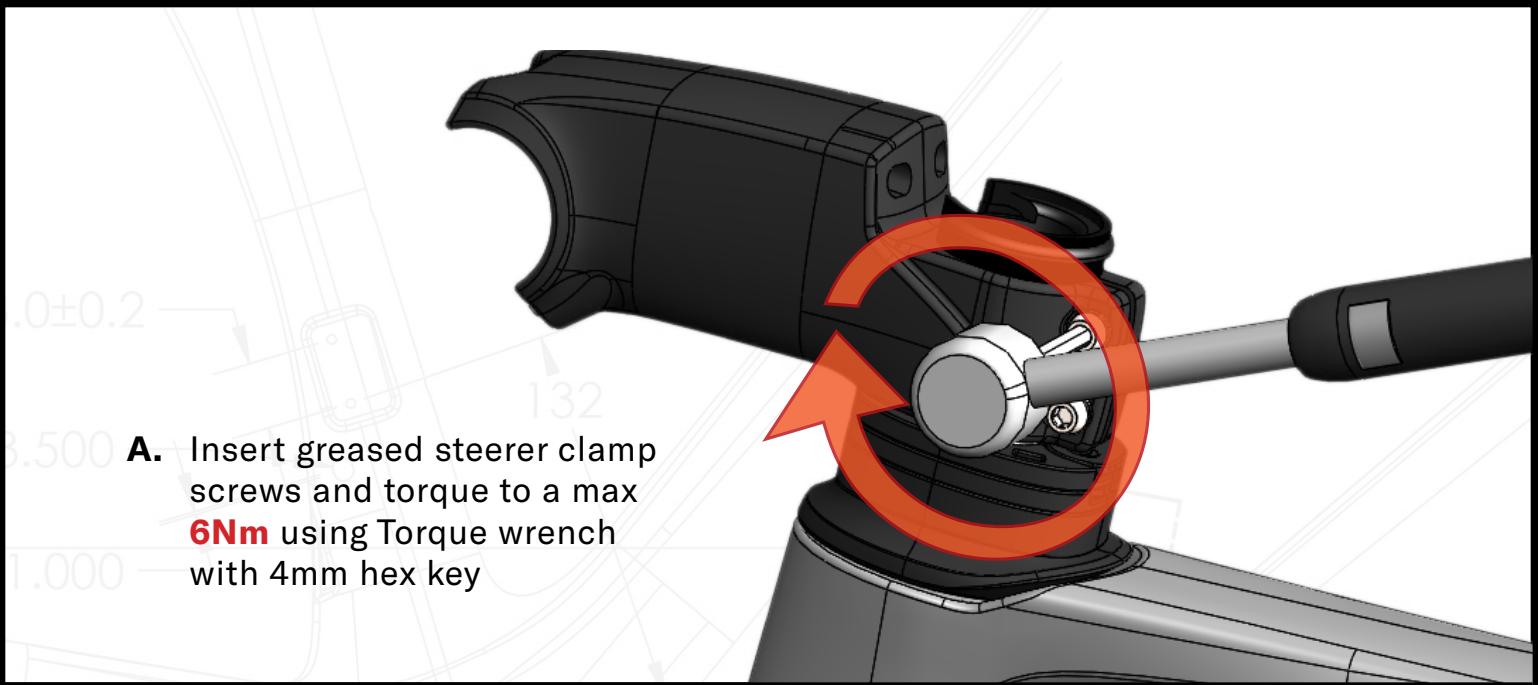


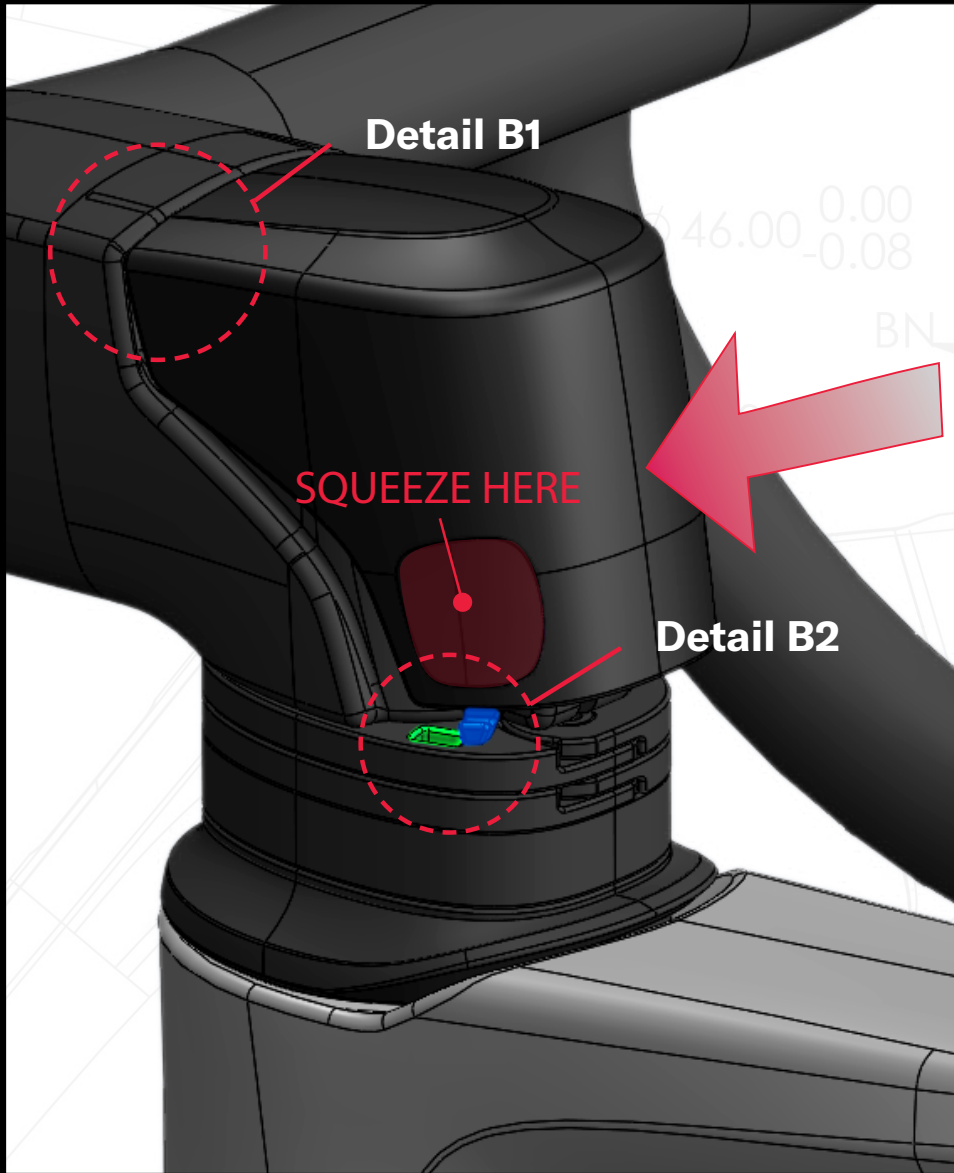


***PARLEE***

# **RZ7 Stem Installation Guide**



**A.** Insert greased steerer clamp screws and torque to a max **6Nm** using Torque wrench with 4mm hex key

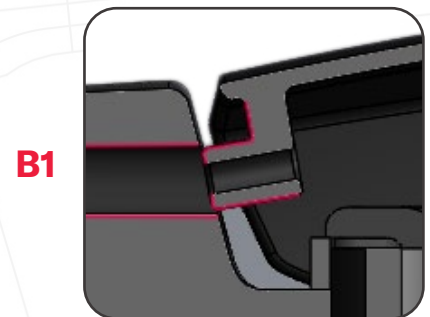


**Detail B1**

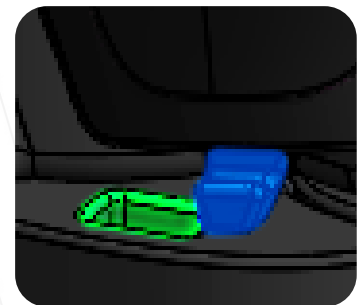
**SQUEEZE HERE**

**Detail B2**

**B.** Place Stem Cover by aligning cable hole pegs at front of cover (**B1**) with Cable passage holes in stem. Squeezing Cover at grip indication surface (**B2**), continue to push forward until tabs snap into place in top-steerer spacer.



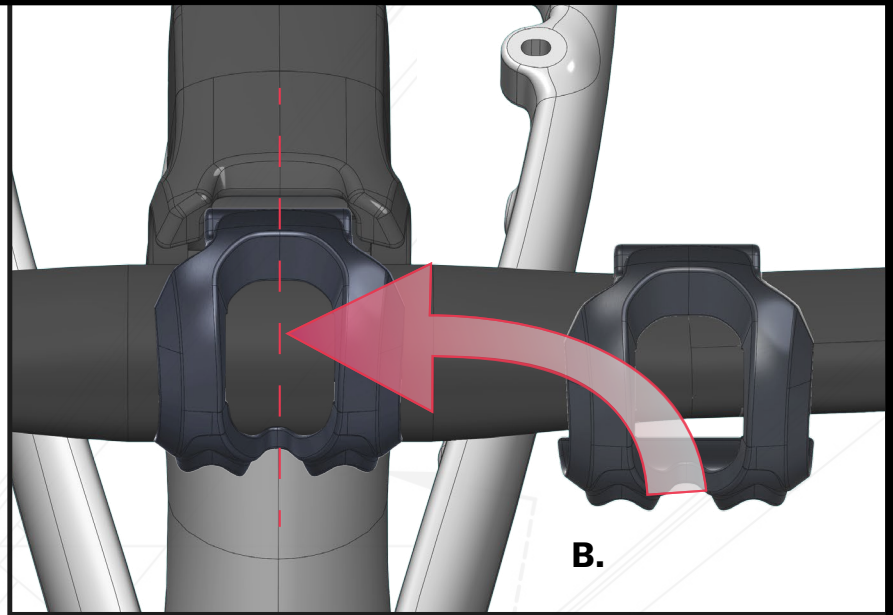
**B2**



**A.** Apply a thin layer of **Park Tool SAC-2 Carbon Assembly compound** between bar and stem prior to assembly



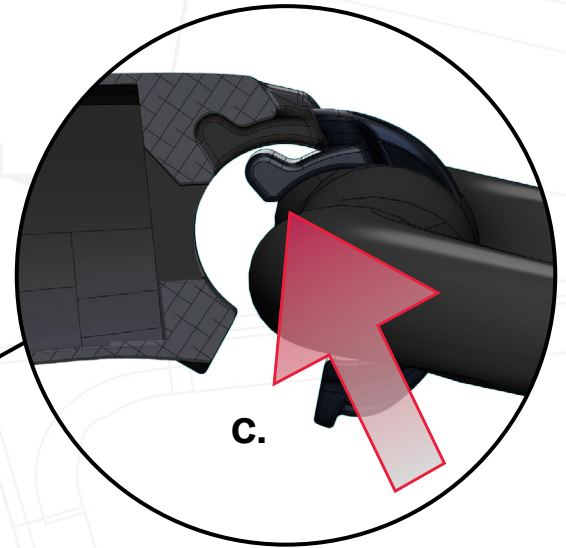
Park Tool SAC-2 . . . . .



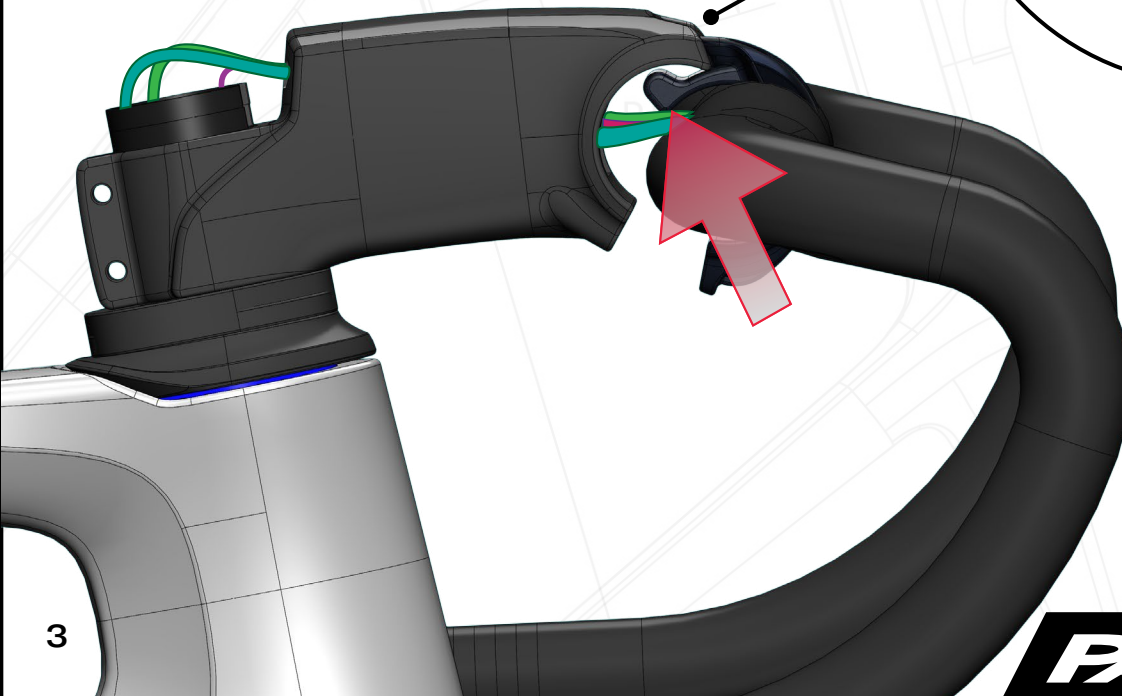
**B.**

**B.** Start with faceplate over tapered portion of bar top moving it inwards and laterally until centered on bar

**C.** Install bar and faceplate at an upward angle until locking feature at top of faceplate nests with groove in stem face

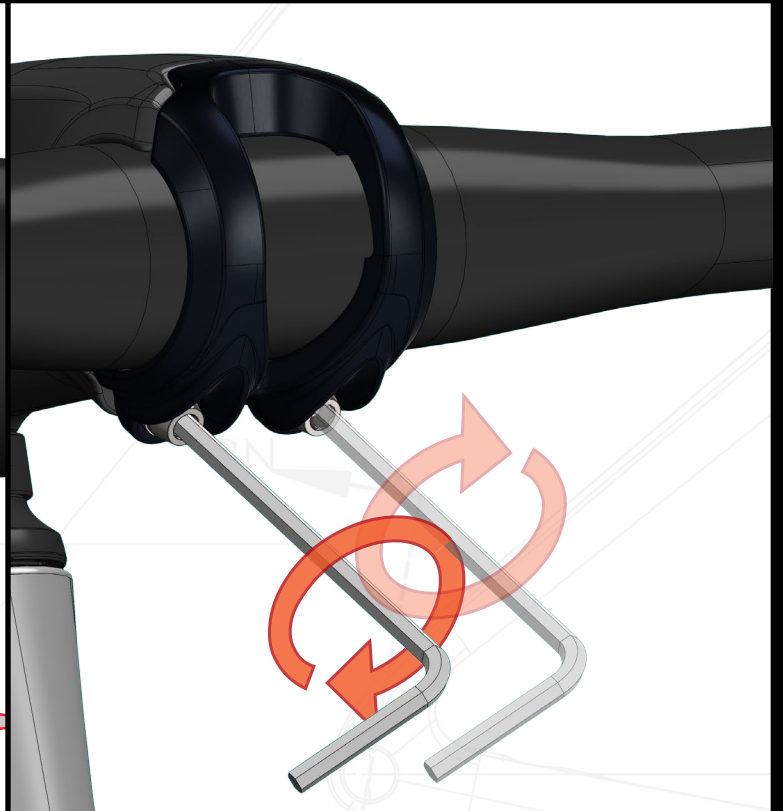


**C.**

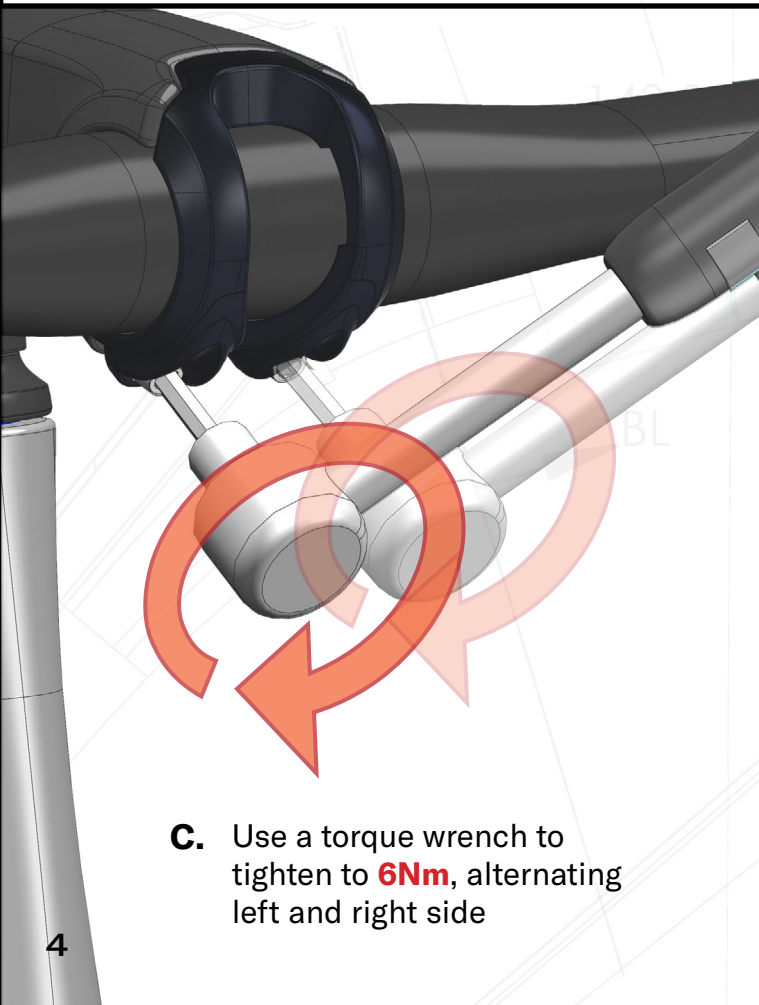




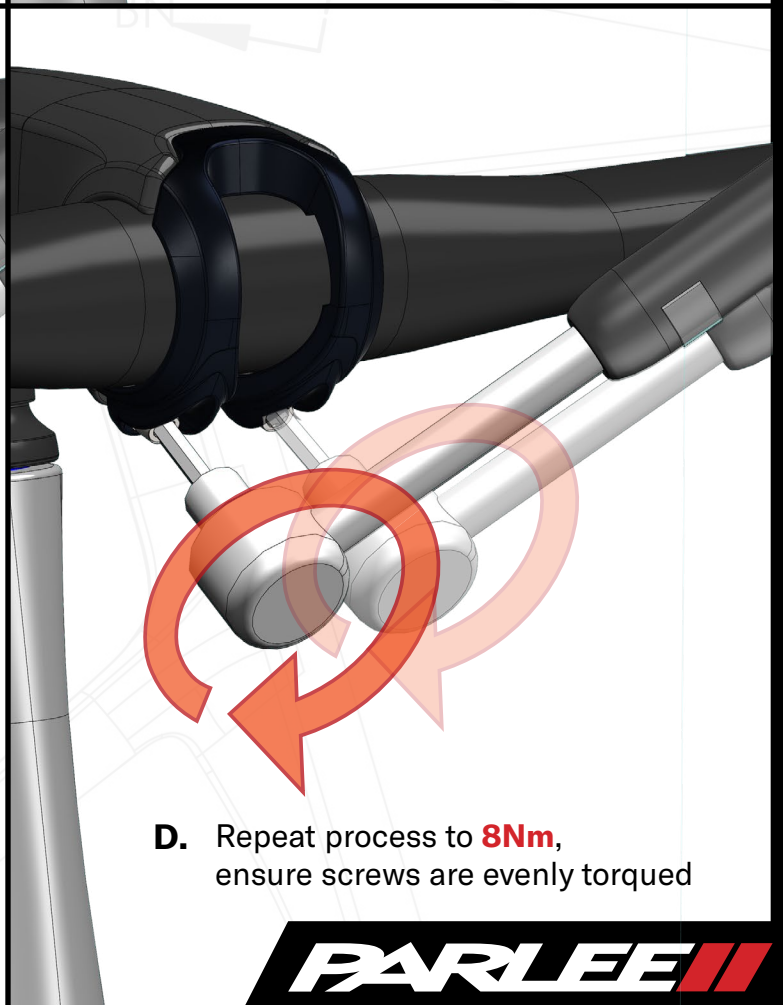
**A.** Install supplied high-strength screws finger tight with M4 hex



**B.** Using M4 hex tighten screws to **3 or 4Nm** alternating between them to ensure even loading



**C.** Use a torque wrench to tighten to **6Nm**, alternating left and right side



**D.** Repeat process to **8Nm**, ensure screws are evenly torqued