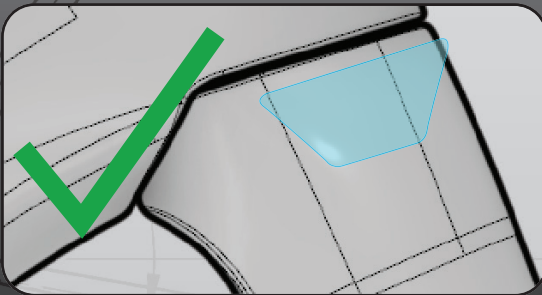
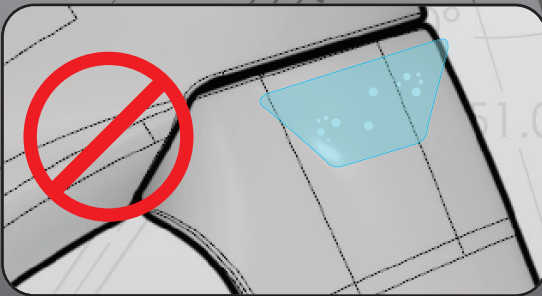


### Installation instructions:

1. Clean paint surface with a mild cleaner and lint free cloth
2. Peel Frame Armor from backing sheet
3. Place Frame Armor on designated areas of the frame.
4. Use thumbs or squeegee to remove any air bubbles.



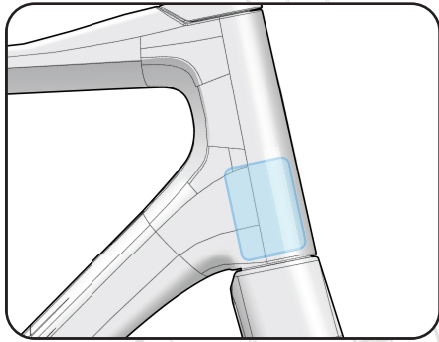
**PARLEE**

69 Federal Street  
Beverly, MA 01915  
1.978.998.4880

[parleecycles.com](http://parleecycles.com)

**Frame Armor Kit**

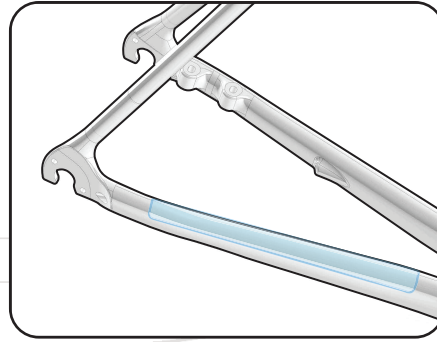
**PARLEE**



### Head-tube Guard

(Use large rectangle guard as needed)

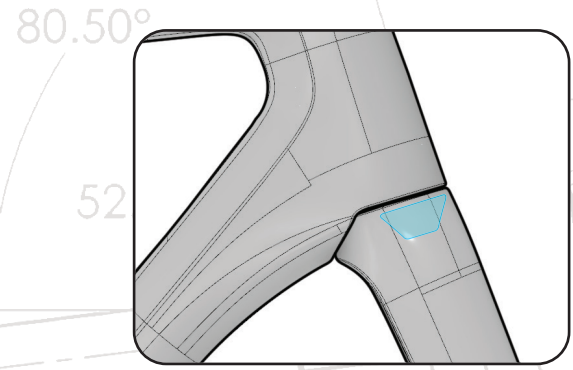
Apply to head-tube side where there is cable housing contact



### Chain-stay Guard

(Use on all models)

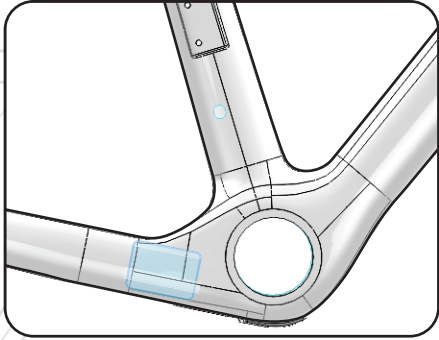
Apply to top side of chain-stay



### Fork Guards

(Use on RZ7 and TTiR models)

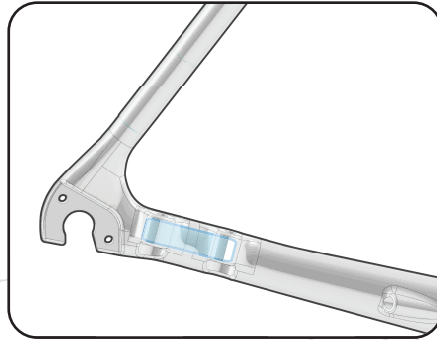
Apply to fork crowns



### Chain Suck Guard

(Use small rectangle guard on all models)

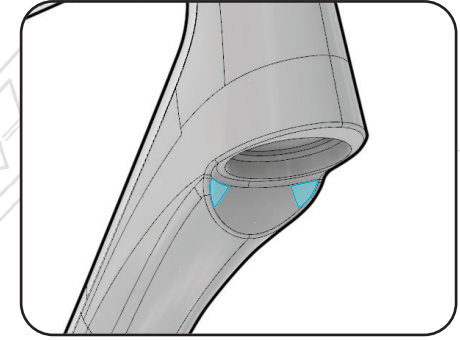
Apply to crank facing side of bottom bracket



### Rotor Guard

(Use on all disc brake models)

Apply to inner chain-stay side of brake mounts



### Down-tube Guards

(Use on RZ7 and TTiR models)

Apply to down-tube where it meets the head-tube behind the fork

385.34

11.23°

59.48