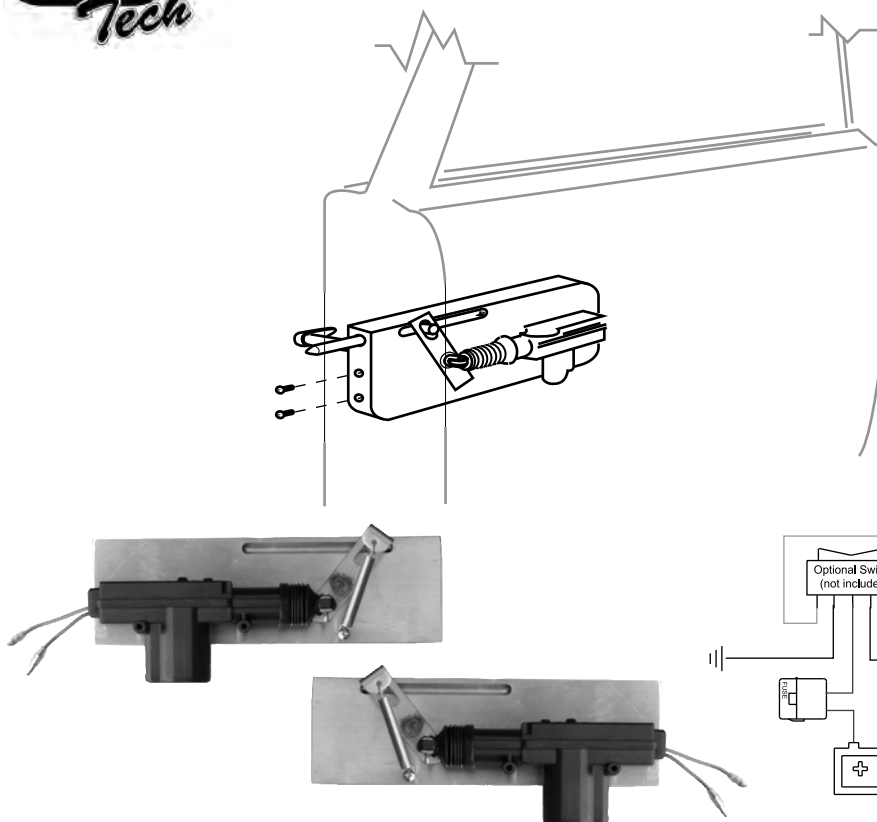
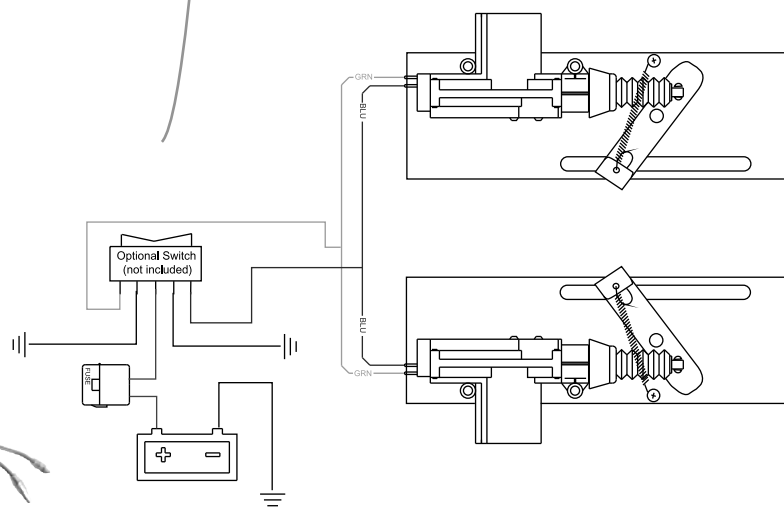


SUICIDE DOOR SAFETY LOCKS

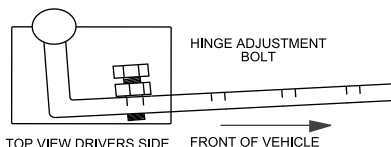


1. MOUNT SUICIDE DOOR SAFETY UNIT ON DOOR WITH SUPPLIED HARDWARE AS SHOWN IN DIAGRAM TO LEFT. YOU WILL NEED TO DRILL MOUNTING HOLES AND HOLE FOR LOCKING PIN IN DOOR, AND HOLE IN DOOR JAMB FOR LOCKING PIN TO GO THROUGH.
2. WIRE ACTUATOR USING WIRING DIAGRAM.
3. REPEAT STEPS FOR OTHER DOOR.

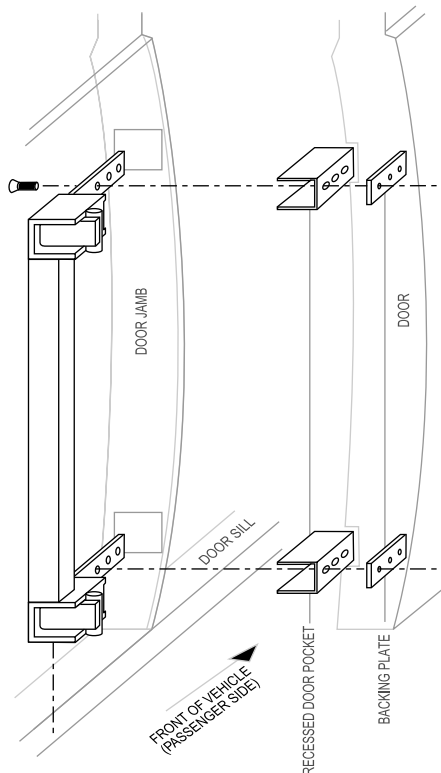
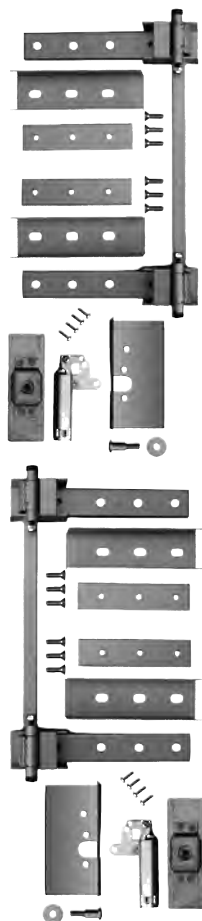


SUICIDE DOOR HINGE INSTALL

THIS INSTALL REQUIRES AN EXPERIENCED FABRICATOR AND SHOULD ONLY BE ATTEMPTED BY A PROFESSIONAL. WE ASSUME NO RESPONSIBILITY FOR DAMAGE DUE TO UNQUALIFIED WORKMANSHIP. READ ALL DIRECTIONS THOROUGHLY BEFORE STARTING.



1. USING HINGE AS REFERENCE MEASURE OUT MIDDLE OF DOOR JAMB SECTION. CENTER HINGE ASSEMBLY USING THAT MEASUREMENT.
NOTE: KEEP HINGE ASSEMBLY AS CLOSE TO OUTER SKIN AS POSSIBLE. EDGE OF HINGE SQUARE SHOULD BE BARELY AGAINST THE STEP IN DOOR JAMB POST. APPLICATION WILL VARY, BUT THERE SHOULD BE A MAXIMUM OF 1/4" TO 3/8" DISTANCE FROM OUTER SKIN TO EDGE OF SQUARE CUTS OUT. BE SURE HINGE IS PERPENDICULAR TO GROUND. THIS MAY MEAN THE TOP HINGE MAY BE FURTHER FROM OUTER SKIN THAN BOTTOM HINGE.
2. BRING HINGE ASSEMBLY INSIDE VEHICLE AND MATCH SQUARE HOLES WITH SQUARE HINGE TUBING. SLIDE ASSEMBLY FORWARD UNTIL PIVOT PIN IS APPROXIMATELY 1" FROM DOOR JAMB SECTION OF BODY. THIS IS VERY CRITICAL, THIS LOCATION OF PIVOT PIN ALLOWS DOOR TO PUSH AWAY FROM BODY AS DOOR SWINGS OPEN. IF THIS PLACEMENT IS NOT POSSIBLE, LOCATE HINGE AS CLOSE AS POSSIBLE FOR OPTIMUM USE.
3. SWING ARMS WILL PROTRUDE FROM DOOR JAMB INTO DOOR IN A WAY THAT MAY NOT BE FLUSH WITH INNER DOOR SKIN. IF THIS IS THE CASE IT MAY BE NECESSARY TO BUILD RECESSED DOOR POCKETS TO MATCH SWING ARMS TO DOOR SKIN. HOLD DOOR UP TO BODY AND DETERMINE LOCATION OF RECESSED POCKET.
NOTE: ONLY TACK WELD AT THIS TIME UNTIL DOOR IS CHECKED FOR PROPER OPERATION.
4. IF YOU DO NOT NEED RECESSED POCKETS, DISREGARD STEP 3 AND MOUNT SWING ARMS TO INNER DOOR SKIN WITH SUPPLIED BACKING PLATES (TWO PER SIDE).
NOTE: TACK-WELD DOOR TO BODY WITH DESIRED DOOR GAP BEFORE ATTACHING SWING ARM TO INNER DOOR SKIN. AFTER DOOR HAS BEEN TEMPORARILY ATTACHED, PUSH THE SWING ARM UP TO INNER DOOR SKIN FROM INSIDE VEHICLE. AT THIS POINT, MARK HOLES TO BE DRILLED FOR MOUNTING DOOR. SLIGHTLY OVER-SIZE HOLES TO ALLOW FOR FUTURE ADJUSTMENTS. CUT DOOR LOOSE AND CHECK SWING. IN SOME APPLICATIONS, BACKING PLATE LOCATION CAN BE SWITCHED TO INTERIOR SIDE.
5. FINE ADJUSTMENT BOLT MAY BE NEEDED, DEPENDING ON YOUR APPLICATION. THIS WILL MOVE DOOR OUTWARD. INSTALL BOLT AS SHOWN IN DIAGRAM. ONCE INSTALLED, TURN THE BOLT COUNTER CLOCKWISE TO ADJUST DOOR OUTWARD. THIS MUST BE DONE BEFORE DOORS ARE PERMANENTLY ATTACHED. TRIAL FIT EVERYTHING BEFORE FINAL FITTING AND WELDING.





You will receive with two complete sets of Bearclaw latches. In each set there should be:

- 2 Latches
- 2 Strikers
- 6 Bolts for Latches
- 6 Nuts for latch bolts
- 6 Washers for latch bolts
- 2 large striker washers
- 2 nuts for strikers



First, fold the latch cutout diagram where stated. Then tape it to the door frame where you wish it to go. As a rule of thumb, place latches near the vertical center of the door frame. This allows for even pressure.

Tape the cutout to the door. Make sure you have the appropriate side facing in and on the correct side of the vehicle. The cut out for the striker should be to the inside of the frame. The area shown in the picture should be on the side of the door frame.



Use the latch as a template to mark holes for drilling



The marked area should look like this. Now you can begin cutting away the steel. Use a cutoff wheel or what ever your cutting device of choice is and have some fun!



After the holes have been cut away, test fit the latch in the mounting location. Assure for proper operation by locking and releasing the mechanism a few times. If the latch hits an area of the door, trim a bit. Continue testing and trimming until you achieve a great fit!



Now you can install your latch.

Inside, you will need to attach a new rod or entire handle mechanism to your latch. Use a 1/8 to 3/16 mild steel round stock, which is easily bent and shaped, as the new rod. Some imagination can be used as to placement or style of interior latch to use.....be creative!

If using a Custom Classic Shave System, you will need to attach the solenoid cable to the lower hole of the release bracket. Then mark the solenoid position on the door and mount!



Remove the installed latch. Get inside vehicle and close door keeping the outside of the door flush with fenders and body. Mark the cutout area of the door latch you just installed on the post of the cab. Then find the center of this area and drill a hole near the inner part of the marked area (as shown). Make sure to drill a larger hole than needed so that you have room to make adjustments with your striker.



Finally, install the striker and snug. You can then check operation and move the striker where needed. Once you are happy with the location, tighten and go cruisin'!!!

Use Latch components to mark holes before Drilling rather than template

