

2011 Ford Super Duty Tow Kit Installation Instructions



Congratulations! You have just purchased the best engineered, highest quality air suspension kit available on the market for your 2011 Super Duty Pickup. When installed, this kit will allow complete control and adjustability over your truck's suspension. Be sure to fully read and understand the instructions before starting your installation. As in any suspension installation, it is the installer's responsibility to assure a correct installation. The installer is also responsible for providing adequate clearances between vehicle components such as axles, shocks, exhaust and mechanical linkages to ensure a safe and reliable installation.

WARNING

DO NOT EXCEED THE MANUFACTURER'S RECOMMENDED GROSS VEHICLE WEIGHT RATING (GVWR).

1. Raise the vehicle until wheels are off the ground and support with jack stands under the frame.
2. It is recommended that the truck's bed be removed to allow working clearance in and around the chassis. Use care to insure that the OEM lighting wire harness connectors, fuel filler neck(s) and grounding straps are disconnected prior to lifting the bed from its mounts
3. Support the rear axle with jack stands and remove the wheels.

Extreme caution should be used in the next few steps to prevent personal injury and/or property damage. Make sure springs are unloaded before attempting to remove them. Failure to do so can cause the spring to eject. Use a floor jack to find the "neutral" position of the springs before removal.

4. Remove the leaf springs and the rear shackle assembly
5. Disconnect the rear sway bar and remove the secondary overload spring pads (if applicable)
6. Remove the brackets that secure the Emergency brake cable to the frame. Also remove the Emergency brake cable from the passenger side leaf spring hanger. These will be re routed and secured after the 4 link hanger is installed.



7. Install the new 4 link mounts. The 4 link mounts install into the factory leaf spring hanger as shown.



8. Install a 9/16"-12 x 4 1/2" bolt with the included machined steel reducers in the factory leaf spring mounting hole. Make sure the 4 link mount is straight and square on the frame. Tighten the bolt to secure the position of the hanger and mark and drill the 6 mounting holes on the frame



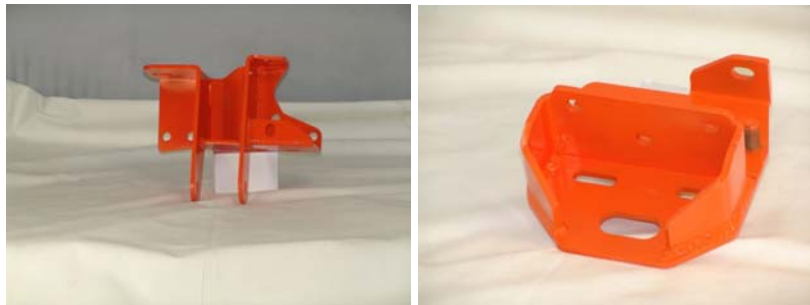
9. Remove the bolt that secures the brake line retaining tabs to the factory leaf spring mount on the axle
10. Install the upper and lower halves of the axle 4 link mounts. The lower half will fit snugly against the axle and the upper half will locate in the centering pin of the leaf spring pad. Install 5/8"-11 x 7" bolts and finger tighten for now



11. The inside of the frame needs a little bit of trimming before the upper bag mounts can be put on. Use a cut off wheel or a plasma cutter to cut a straight line. Trim the inside lip of the frame so the bag mount will fit flush against the bottom of the frame



12. Align the 3/8" diameter hole on the bag mount with the with the original bump stop mounting hole on the frame. Not all frames are the same and there are 2 different holes on the bracket to choose from. Make sure that the bracket sits directly over the centerline of the axle. Mark and drill the remaining holes and attach the upper bag mount. The pan hard mount on the driver's side of the truck utilizes many of the same mounting holes so be sure to install that before all of the hardware is tightened.



13. Remove factory differential cover and drain fluid
14. Mount differential pan hard bracket between the differential cover and differential housing with link mount provisions towards the passenger side of the truck. The differential mount is located by the differential cover bolts but also contacts the passenger side axle tube and is secured with a clamp
15. Re fill rear axle with the manufacturer's recommended fluid type and volume



16. Install the pan hard bar with the bushing end on the frame and the heim joint at the axle
17. Install air fitting on airbag and mount the rear air bags. Be sure to place the 9 1/2" diameter flat bag plate between the bag and the lower mount. This keeps the bag from rolling over itself at low pressures and contacting any sharp objects. The upper bag mount does not require a plate between the bag and mount as it is already built in to the upper bag mount



18. Install the 4 link bars between the hangers and axle mounts with the bushing ends of the bars mounted at the frame and the heim joints mounted at the axle. Adjust the length of the bars to adjust the pinion angle and also center the axle



19. Be sure to tighten all hardware after installation for the hangers, links, axle mounts, bag brackets, shock brackets, pan hard bar and differential bracket. Check again after 50 miles of driving
20. Raise the rear of truck and remove jack stands. Mount the wheels and lower the truck to the ground.
21. Add and remove air to bags and articulate suspension.

