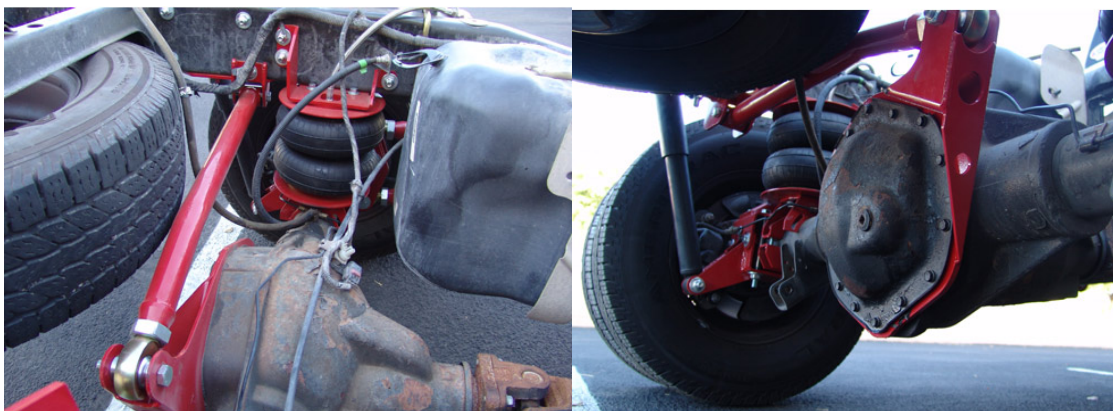


2003-2010 Dodge Ram 2500/3500 Tow Kit Installation Instructions



Congratulations! You have just purchased the best engineered, highest quality air suspension kit available on the market for your 2003-2010 Dodge Ram pickup. When installed, this kit will allow complete control and adjustability over your truck's suspension. Be sure to fully read and understand the instructions before starting your installation. As in any suspension installation, it is the installer's responsibility to assure a correct installation. The installer is also responsible for providing adequate clearances between vehicle components such as axles, shocks, exhaust and mechanical linkages to ensure a safe and reliable installation.

WARNING

DO NOT EXCEED THE MANUFACTURER'S RECOMMENDED GROSS VEHICLE WEIGHT RATING (GVWR).

1. Raise the vehicle until wheels are off the ground and support with jack stands under the frame.
2. It is recommended that the truck's bed be removed to allow working clearance in and around the chassis. Use care to insure that the OEM lighting wire harness connectors, fuel filler neck(s) and grounding straps are disconnected prior to lifting the bed from its mounts
3. Support the rear axle with jack stands and remove the wheels.

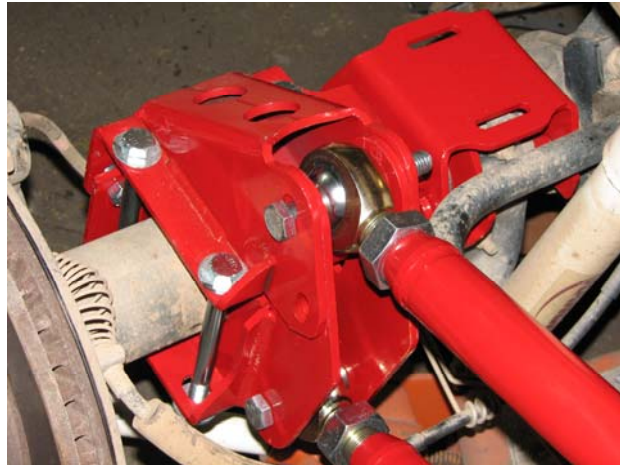
Extreme caution should be used in the next few steps to prevent personal injury and/or property damage. Make sure springs are unloaded before attempting to remove them. Failure to do so can cause the spring to eject. Use a floor jack to find the "neutral" position of the springs before removal.

4. Remove the leaf springs and the rear shackle assembly
5. Remove the shocks and the bumpstops
6. Remove the secondary overload spring pads (if applicable) with a plasma cutter, torch, or sawzall. It is important that the pad is removed without damaging or affecting the structural integrity of the frame. Make sure a qualified person performs this step.
7. Grind the frame smooth

8. Install the front 4 link hanger as shown. It is best to install the rear 4 link bolt in the factory leaf spring location and then rotate the bracket up so it sits tight against the frame



9. Mark and drill the 4 mounting holes in the side of the frame and install the hanger
10. Install the upper and lower halves of the axle 4 link mounts. The lower half will fit snugly against the axle and leaf spring pad and the upper half will locate in the centering pin of the leaf spring pad. Install 5/8"-11 x 8" bolts and finger tighten for now



11. Attach the lower bag mount to the axle and install the 4 link bars

12. The upper bag mount attaches to the factory bump stop mounting location. Install the bag mount with the supplied flat socket head cap screws and then mark and drill the 3 remaining mounting holes in the frame and install and tighten the bolts



13. Install the rear upper shock relocater brackets on the frame by aligning the hole in the bottom of the bracket with the large vertical hole in the frame. The driver's side shock relocater is integrated into the frame. Mark and drill the remaining mounting holes and install and tighten the bolts
14. Remove factory differential cover and drain fluid
15. Mount differential pan hard bracket between the differential cover and differential housing with link mount provisions towards the passenger side of the truck
16. Re fill rear axle with the manufacturer's recommended fluid type and volume
17. Install the pan hard bar with the bushing end on the frame and the heim joint at the axle

18. Install the factory shocks with the supplied bolts



19. The factory brake line may need slight modification in order to allow enough clearance for the lower shock mount. Carefully use a grinder to modify the caliper so the brake line can be turned 90 degrees



20. Install air fitting on airbag and mount the rear air bags. Be sure to place the 9 ½” diameter flat bag plate between the bag and the mounts. This keeps the bag from rolling over itself at low pressures and contacting any sharp objects.



21. Adjust the angle of the lower bag mounts so the air bag ends are parallel with each other.
22. Be sure to tighten all hardware after installation for the hangers, links, axle mounts, bag brackets, shock brackets, pan hard bar and differential bracket. Check again after 50 miles of driving
23. Disconnect the factory brake lines at the calipers and at the frame and replace with the supplied braided stainless brake lines
24. Raise the rear of truck and remove jack stands. Mount the wheels and lower the truck to the ground.
25. Add and remove air to bags and articulate suspension.
26. Adjust pinion angle to factory specs at ride height with adjustable heim joints on the 4 link bars

